

**PROFILE ALIGNMENT AND GRADE OF
SANITARY SEWER
TO BE CONSTRUCTED IN
GREVILLE AVENUE
FROM
162ND STREET TO 13TH NORTHERLY THEREOF**

- (1) USE STANDARD MANHOLE FRAME AND COVER 5'-11 1/2"
- (2) USE STANDARD STRENGTH PIPE.
- (3) USE CEMENT MORTAR FOR ALL VITRIFIED CLAY PIPE JOINTS.
- (4) RE SURFACE ALL TRENCHES WITHIN PAVED AREA TO MEET L.A. CO. ROAD DEPT. REQUIREMENTS ACCORDING TO PERMIT.
- (5) CONSTRUCT HOUSE CONNECTIONS WITH INVERT AT PROPERTY LINE (8) FT. BELOW CURB GRADE.
- (6) ALL STRUCTURES SHALL BE BRICK SEWER STRUCTURES 3'-0" DIA.
- (7) STOPPERS TO BE INSTALLED WITH JOINT COMPOUND BY MANUFACTURER'S PLAN SPEC. SEC. 33-49.
- (8) CONCRETE PAVEMENT TO BE CUT NOT LESS THAN 2" DEPTH WITH CONCRETE SAW SPEC. SEC. 53.

NOTE: NO REPRESENTATIVE OF THE COUNTY ENGINEER WILL SURVEY OR LAYOUT ANY PORTION OF THE WORK. THE OWNER OR HIS AUTHORIZED REPRESENTATIVE SHALL FURNISH THE COUNTY ENGINEER WITH GRADE SHEETS AND STATIONS OF ALL HOUSE CONNECTIONS AND A BRANCHES AND SHALL PROVIDE STAKES FOR THEM AT THEIR PROPER LOCATIONS WITH THEIR STATIONING PLASBY MARKED. ANY CHANGE IN LOCATION SHALL BE REQUESTED IN WRITING BY THE OWNER OR HIS REPRESENTATIVE. NO REVISION SHALL BE MADE IN THESE PLANS WITHOUT APPROVAL OF THE COUNTY ENGINEER.

PRIVATE CONTRACT No. 1825
SHEET 1 OF 1 SHEETS
W.S. 25 July 1951

PREPARED IN THE OFFICES OF
BARCLAY SURVEYING CO.

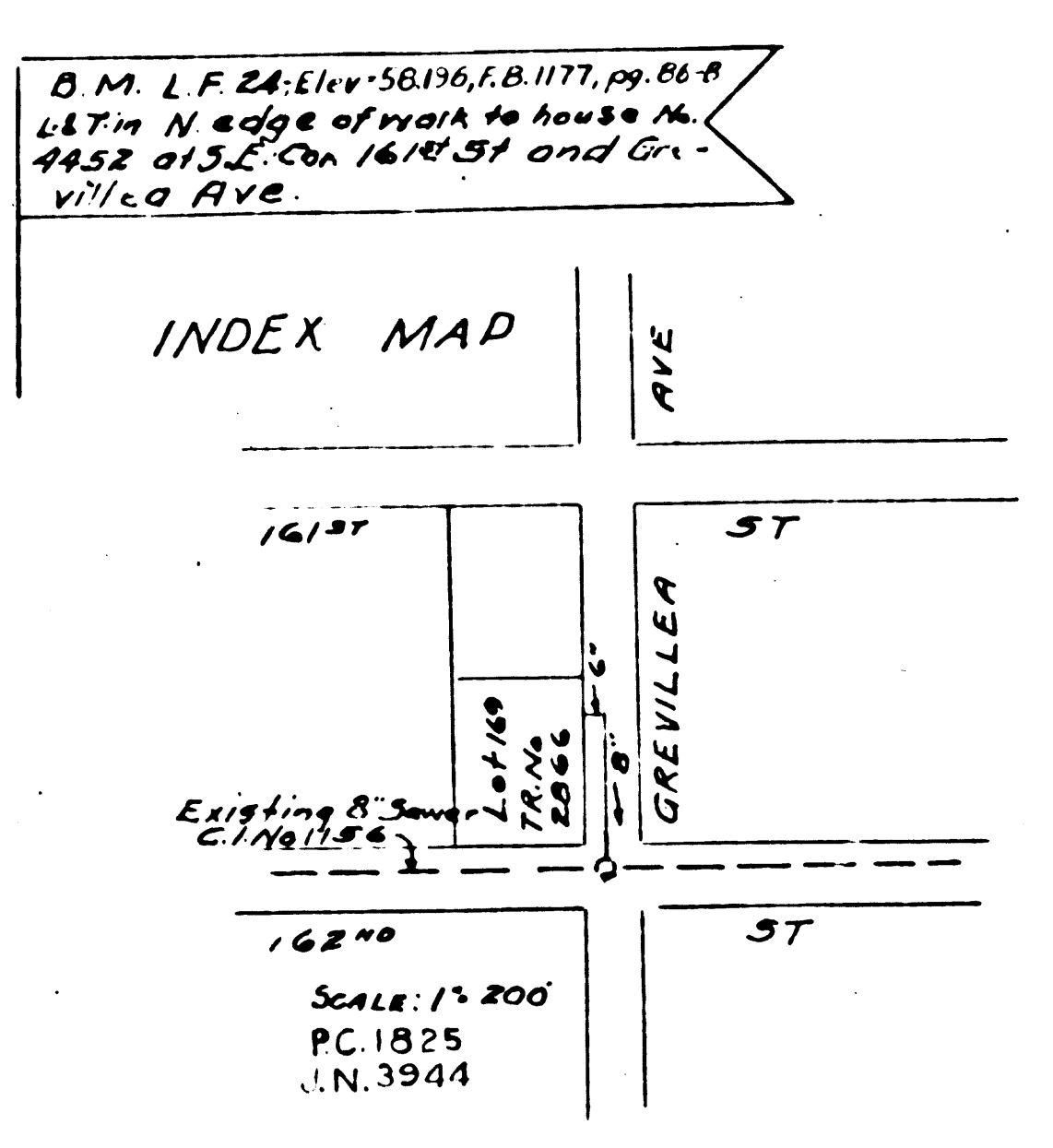
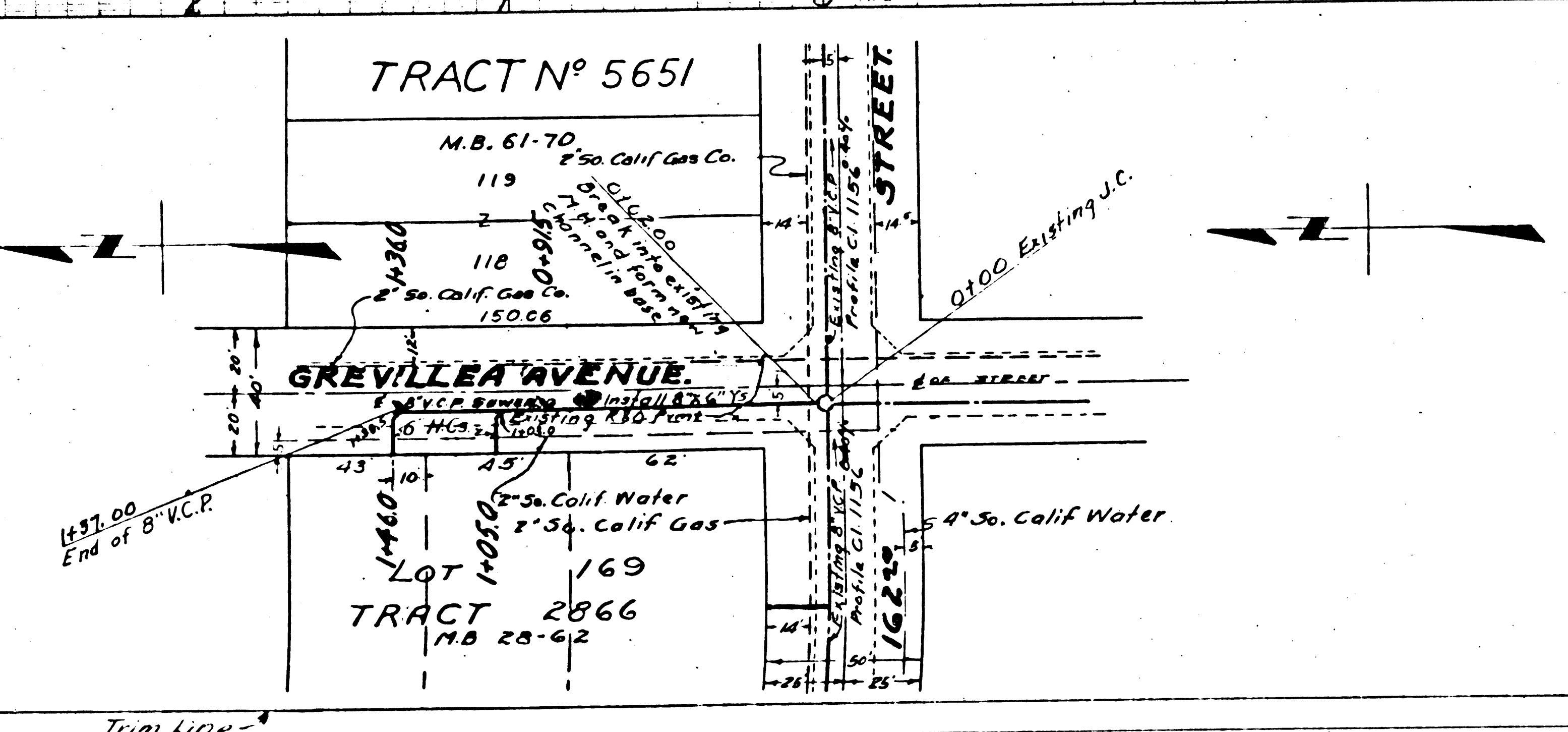
BY: *D. J. Zate*
R.C.E. No. 1137

FOR LEGEND
See Plan No. 5064

NOTE: GRADES TO WHICH THIS IMPROVEMENT IS TO BE CONSTRUCTED ARE SHOWN ON PLAN AND PROFILE. GRADE POINTS FOR TOP OF CURB, CENTER LINE OF STREET, CENTER LINE OF ALLEY ARE SHOWN BY CIRCLES ON PROFILE. AT ALL POINTS BETWEEN DESIGNATED POINTS, THE GRADE SHALL BE ESTABLISHED SO AS TO CONFORM TO A STRAIGHT LINE DRAWN BETWEEN SAID DESIGNATED POINTS. ELEVATIONS ARE IN FEET ABOVE U.S. DATUM OR MEAN SEA LEVEL. THIS DRAWING AND THE DATA HEREON ARE HEREBY MADE A PART OF THE SPECIFICATIONS WORK TO BE CONSTRUCTED ACCORDING TO SPECIFICATIONS ON FILE IN THE OFFICES OF THE COUNTY ENGINEER AND SHALL BE PROSECUTED ONLY IN THE PRESENCE OF THE COUNTY ENGINEER BEFORE WORK CAN BE STARTED. THE CONTRACTOR MUST OBTAIN A PERMIT TO EXCAVATE IN COUNTY STREETS FROM THE L.A. CO. ROAD DEPT. 105 W. 2ND ST., L.A. AND MAKE A DEPOSIT WITH THE COUNTY ENGINEER \$20 L.A. CO. ENG. BLDG. SUFFICIENT TO COVER THE COST OF CONSTRUCTION INSPECTION AND RECORD PLANS. APPROVAL OF THIS PLAN BY THE COUNTY OF LOS ANGELES DOES NOT CONSTITUTE A REPRESENTATION AS TO THE ACCURACY OF THE LOCATION OF OR THE EXISTENCE OR NON-EXISTENCE OF ANY UNDERGROUND UTILITY PIPE OR STRUCTURE WITHIN THE LIMITS OF THIS PROJECT.

APPROVED: *J. E. [Signature]* COUNTY ENGINEER
APPROVED: *A. M. Rawm* OFFICE ENGINEER, L.A. CO. SANITATION DIST. No. 5

CHECKED BY: *H. L. [Signature]* 7-9-51
OFFICE OF COUNTY ENGINEER, L.A. CO. 18 6412



checked
S.K.
8/30/51

£10

Aug 1 1951

BC 18581 09