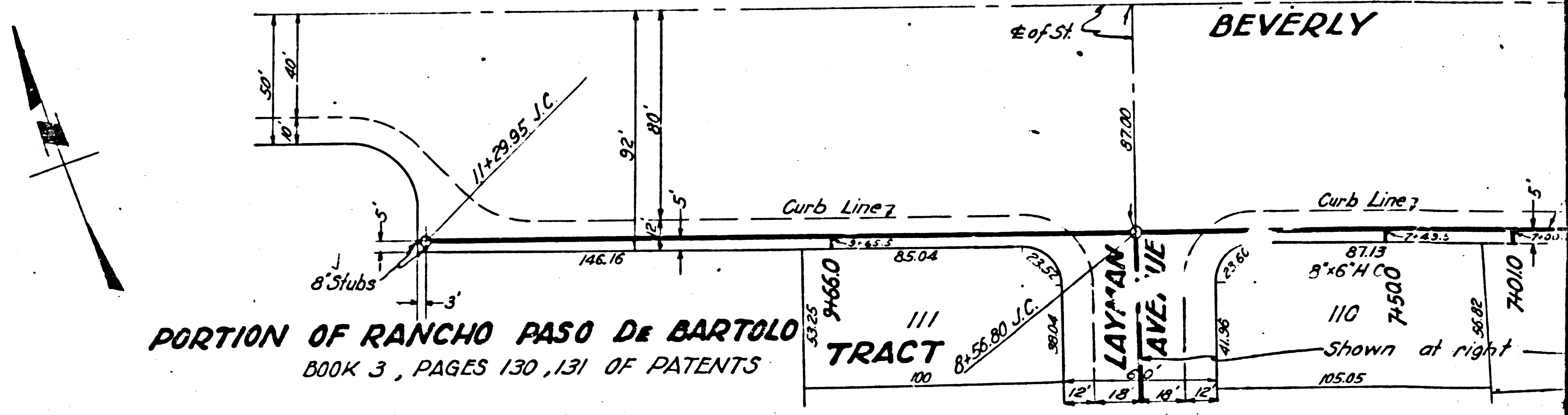
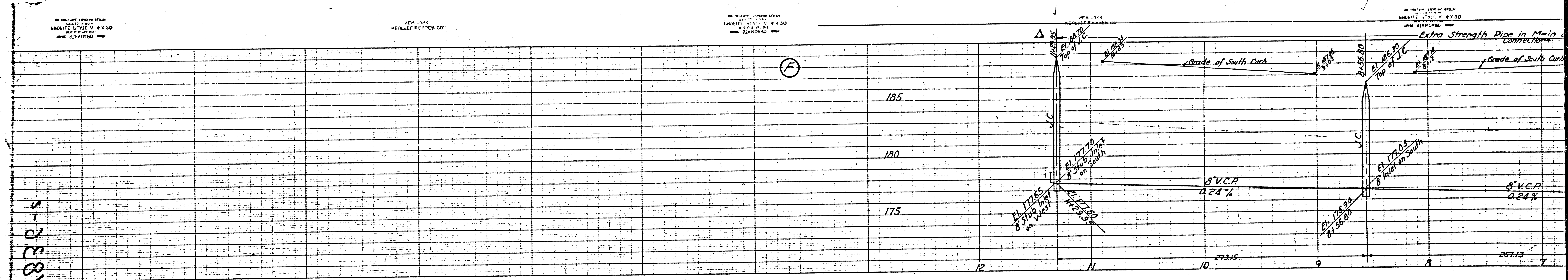


b.c. 1832-5

P.C. 1836

20



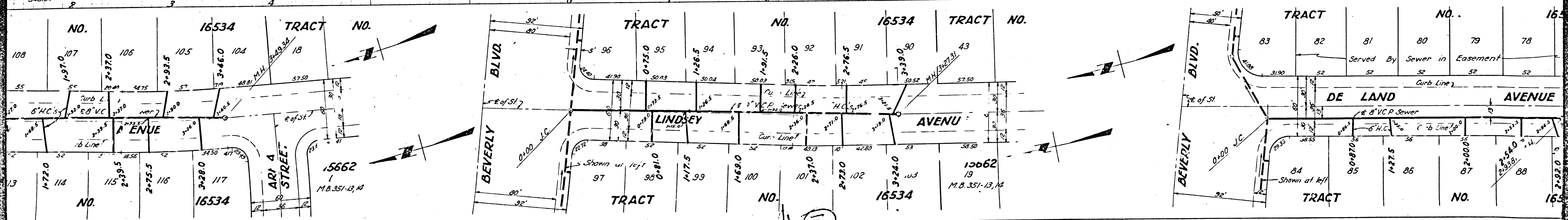
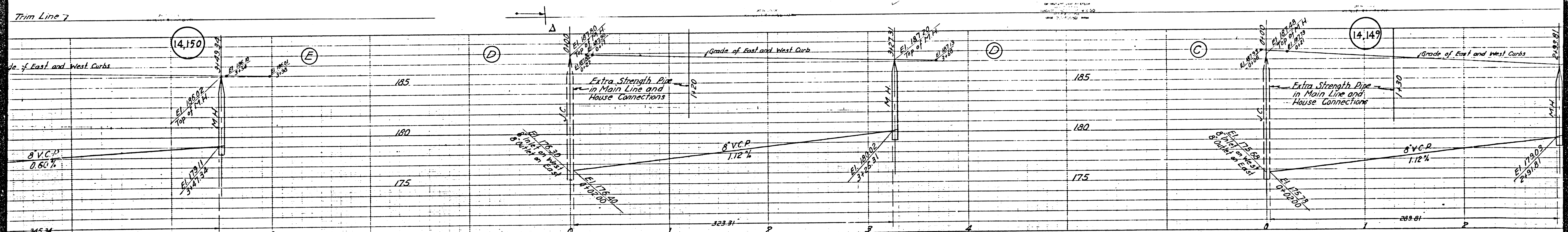
PORTION OF RANCHO PASO DE BARTOLO TRACT BOOK 3, PAGES 130, 131 OF PATENTS

111 7460

110 7450

Shown at right 10505

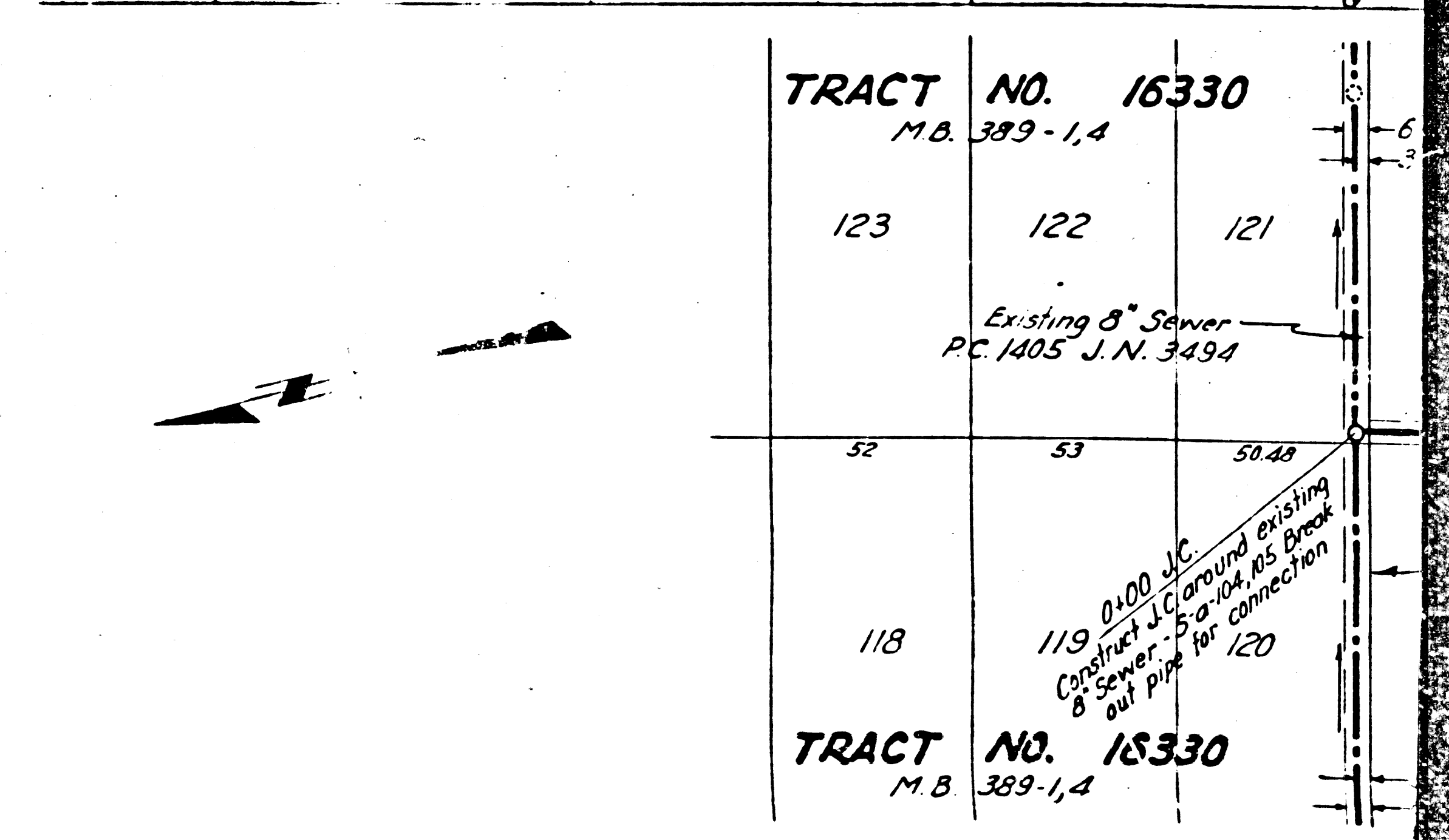
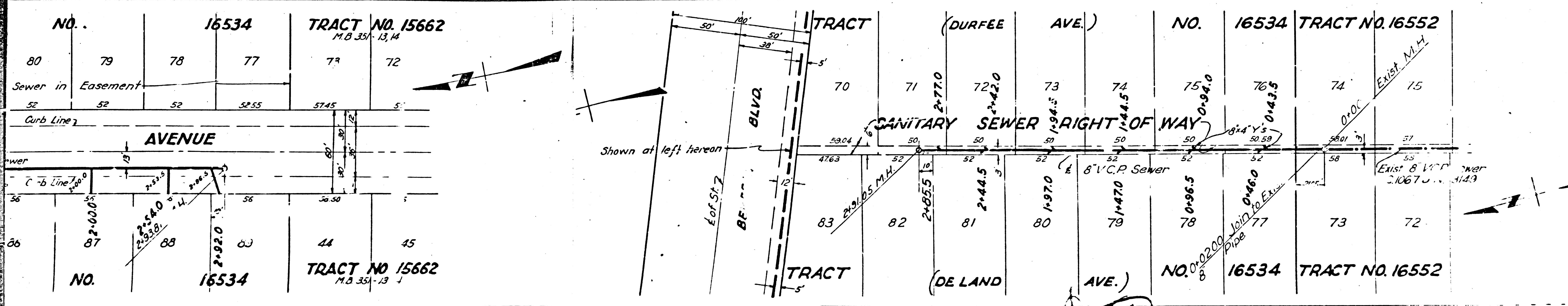
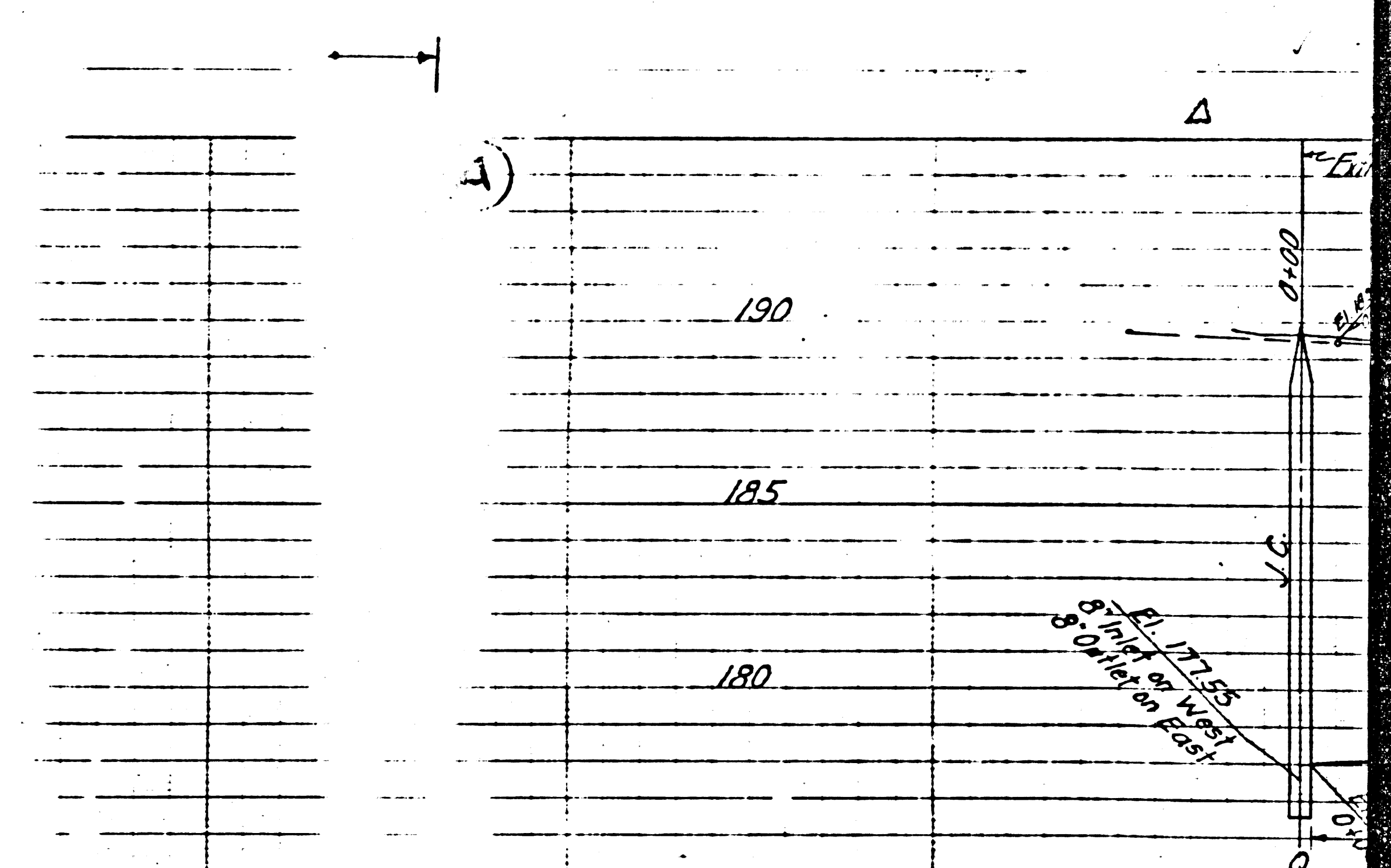
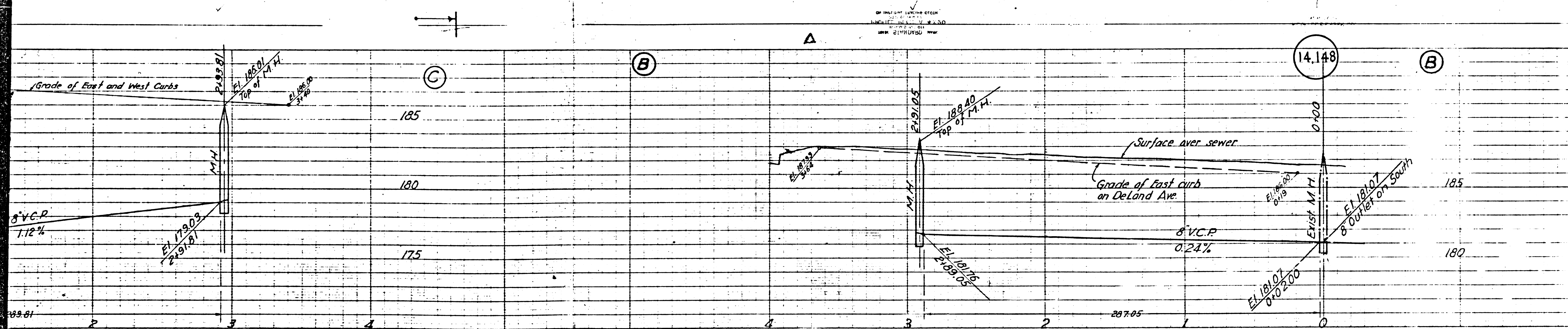
74010



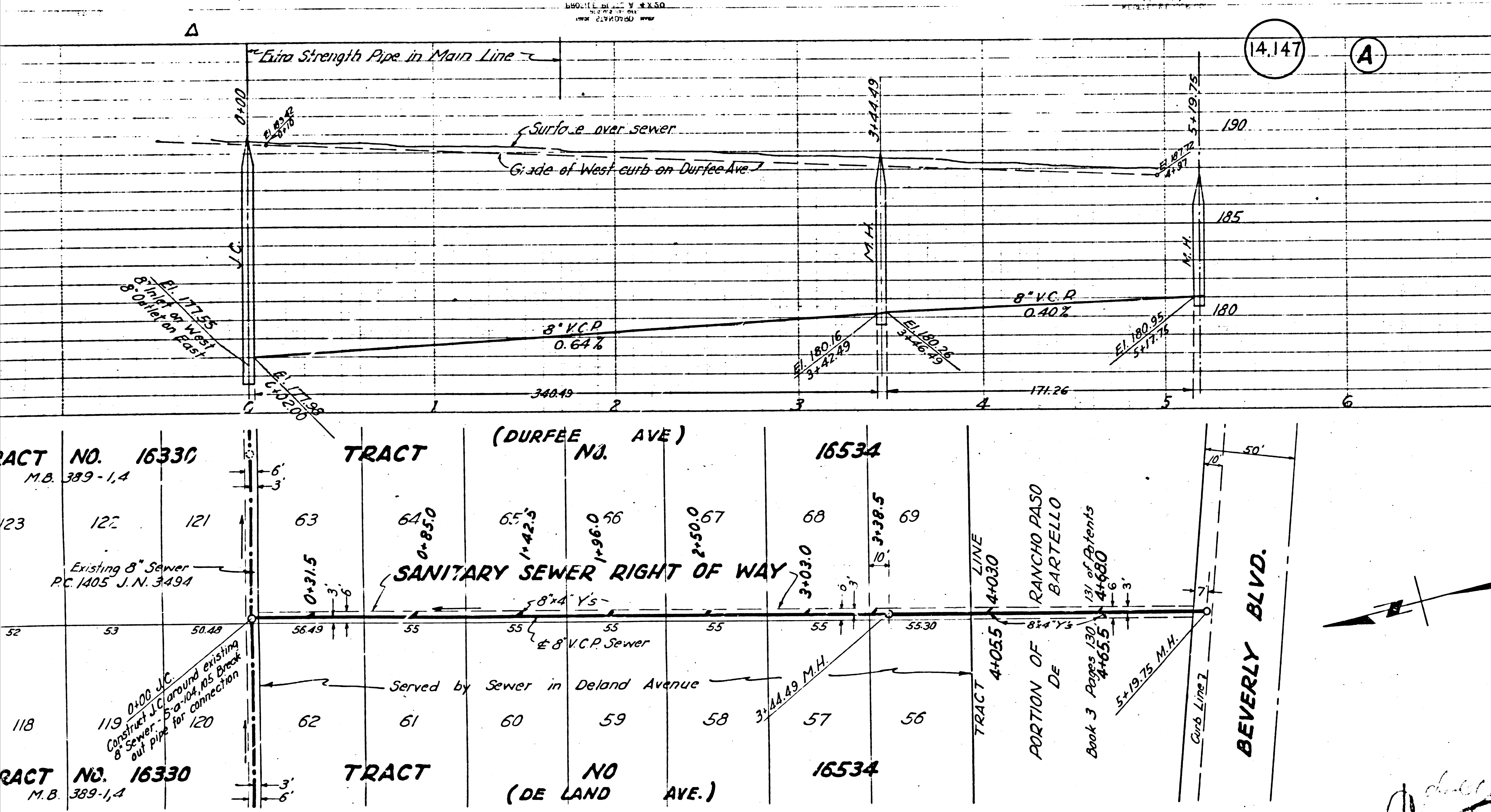
Trim Line 7

Trim Line

PREL



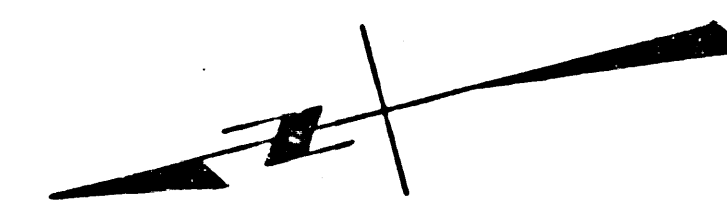
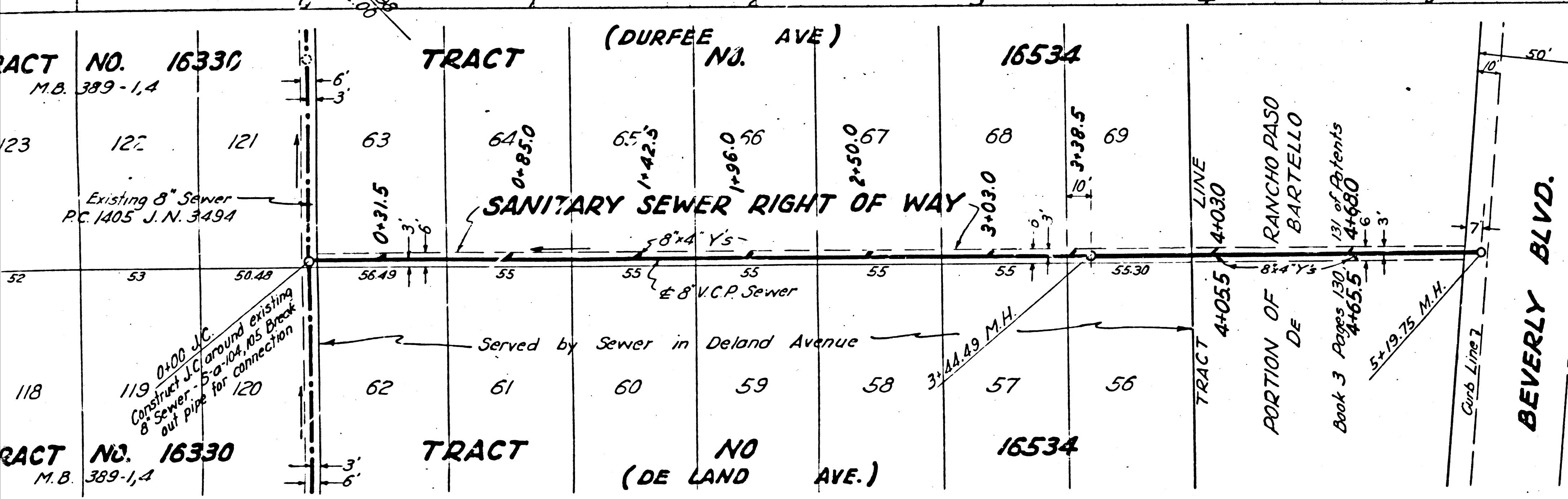
4



B.M. No. 14 F.B.L.Q. 866-110. Elev. 187.27.
 Coat Nail in lead 1 1/2\"/>

PROFILE ALIGNMENT AND GRADE OF
SANITARY SEWERS
 TO BE CONSTRUCTED IN
SANITARY SEWER RIGHTS OF WAY
 BETWEEN SOUTH LINE OF TRACT 16334 AND BEVERLY BLVD.
 BETWEEN NORTH LINE OF TRACT 16334 AND BEVERLY BLVD.
DELAND AVENUE
LINDSEY AVENUE
LAYMAN AVENUE
 BETWEEN SOUTH LINE OF TRACT 16334 AND BEVERLY BLVD.
BEVERLY BOULEVARD
 BETWEEN DURFEE AVENUE AND A POINT 1100 WESTERLY
TRACT NO. 16534
PRIVATE CONTRACT NO. 1836
W.S. 36 f 97
SHEET 2 OF 2 SHEETS
 SCALE: VERT. 1" = 4'
 HORIZ. 1" = 40'
 JULY 1951
 PREPARED IN THE OFFICES OF
BARNETT, HOPEN & SMITH

TRACT NO. 16334 & C.
 PG. 1038
 SHEETS OF 5 SHEETS



Wanda Barred
 R.E. 1216

**FOR CONSTRUCTION NOTES
 SEE SHEET 1**

COUNTY OF LOS ANGELES, CALIFORNIA
 APPROVED WILLIAM J. FOX, COUNTY ENGINEER
 BY *[Signature]* CHIEF DEPUTY
 A.M. RAWN, Office Engineer
 Chief Engineer of County Sanitation District No. 2

REVISION CHECKED *[Signature]* Office of County Engineer R.E. No. 1660
 CHECKED *[Signature]* Office of the County Engineer R.E. No. 1660

Check 3-11-52 *[Signature]*
 (5)