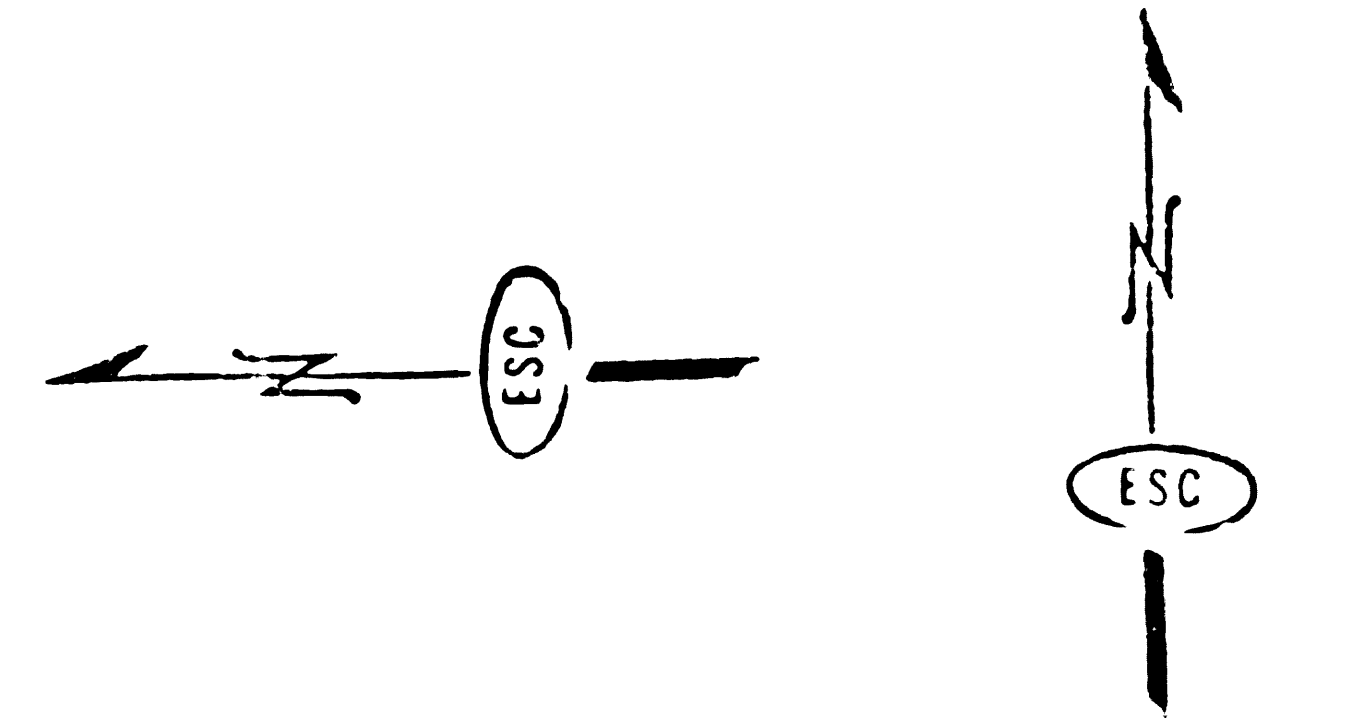
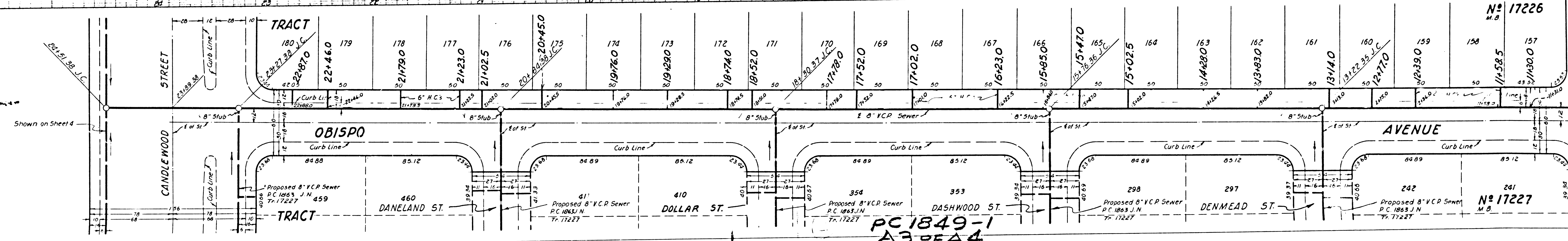
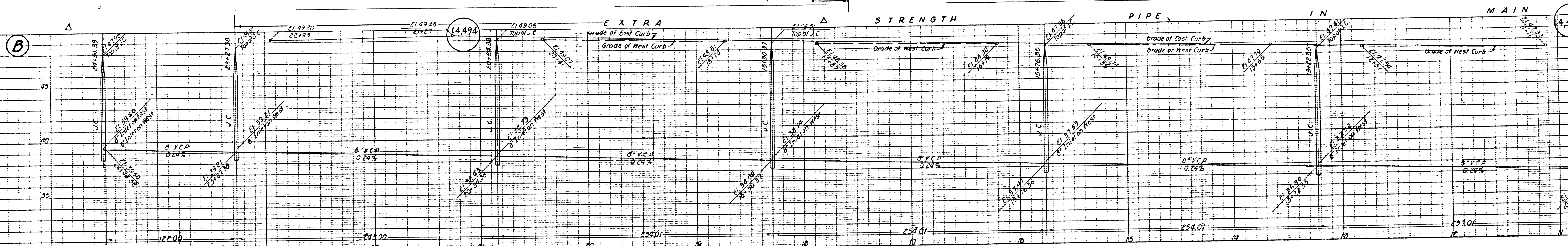


PC 1849-1
A2 OF A4



PC 1849-1
A2 OF A4



PC 1849-1
A3 OF A4

N^o 17226
M.B.

N^o 17227
M.B.

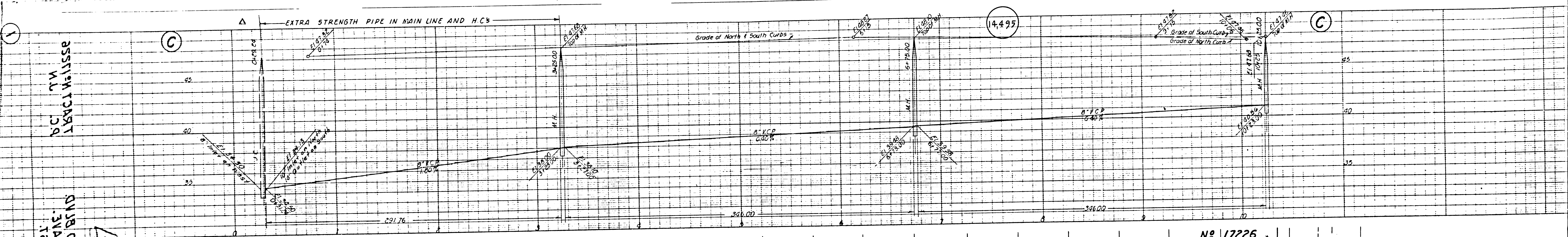
Proposed 8" V.C.P. Sewer
P.C. 1863 J.N.
Tr. 17227

Proposed 8" V.C.P. Sewer
P.C. 1863 J.N.
Tr. 17227

Proposed 8" V.C.P. Sewer
P.C. 1863 J.N.
Tr. 17227

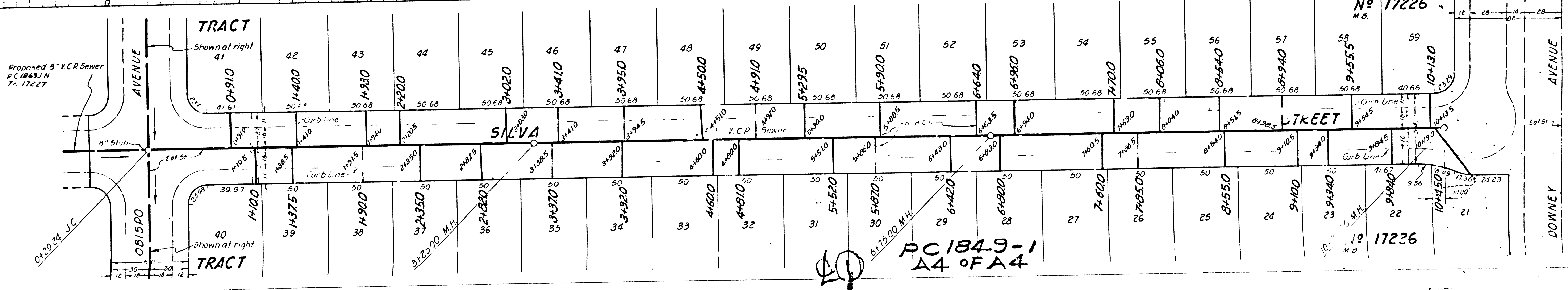
Proposed 8" V.C.P. Sewer
P.C. 1863 J.N.
Tr. 17227

Proposed 8" V.C.P. Sewer
P.C. 1863 J.N.
Tr. 17227

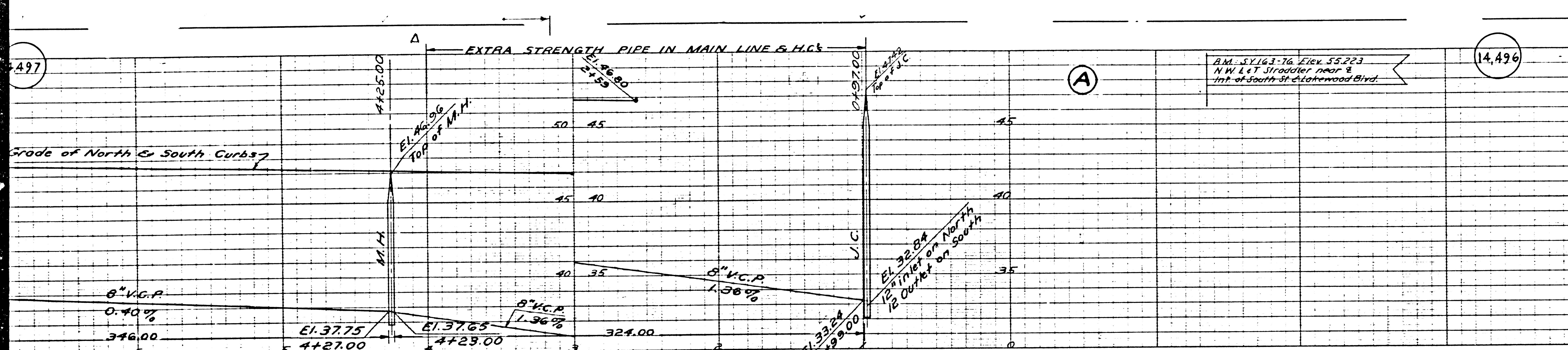


PC 17226
TRACT 41

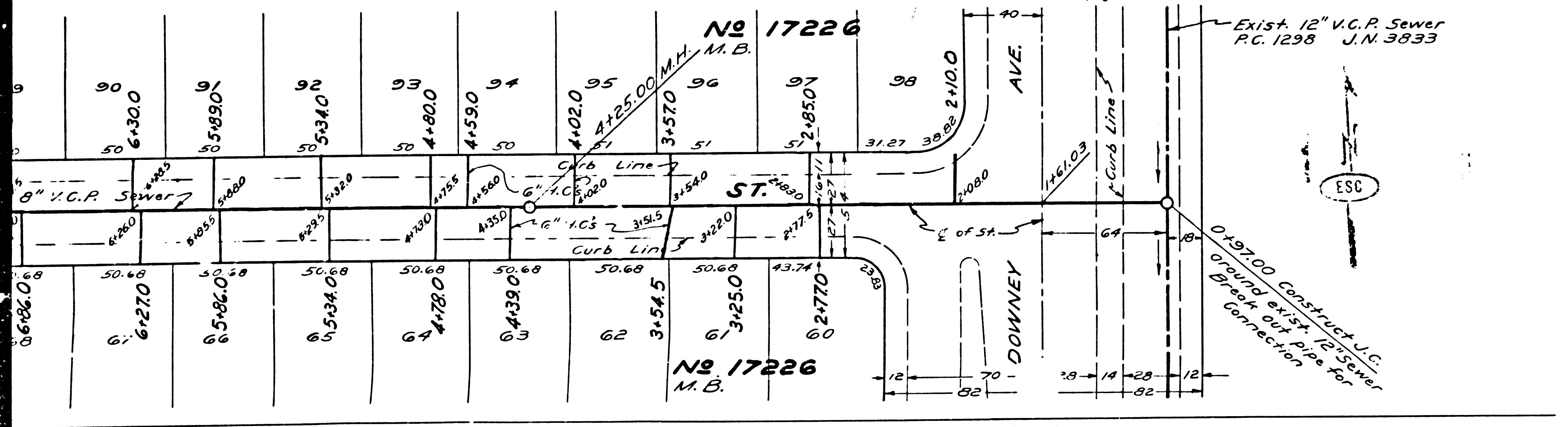
2111 21
08180 AVE.
DES AND BROS
PC 1849
233662 11A2



PC 1849-1
A4 of A4



PROFILE, ALIGNMENT AND GRADE OF
SANITARY SEWERS ②
 TO BE CONSTRUCTED IN
ECKLESON ST.
YEARLING ST.
HARDWICK ST.
 BETWEEN OBISPO AVE. & DOWNEY AVE.
 IN TRACT NO 17226
 PRIVATE CONTRACT NO. 1849
 W. S. 30
 SHEET 2 OF 4 SHEETS
 SCALE: VERT. 1" = 4'
 HOR. 1" = 40'
 JULY 1951
 PREPARED IN THE OFFICES OF
 ENGINEERING SERVICE CORPORATION



ENGINEERING SERVICE CORPORATION
 1127 W WASHINGTON BLVD
 LOS ANGELES 15 CALIF PR. 7281

REVISIONS	

TRACED BY H.S.
 DESG'D BY K.S.
 CK'D BY
 SUBMITTED:

W.O. NO.	DWG NO.	DATE	SCALE	L.B.	F.B.
5977-126		JULY 1951	VERT. 1" = 4' HOR. 1" = 40'		

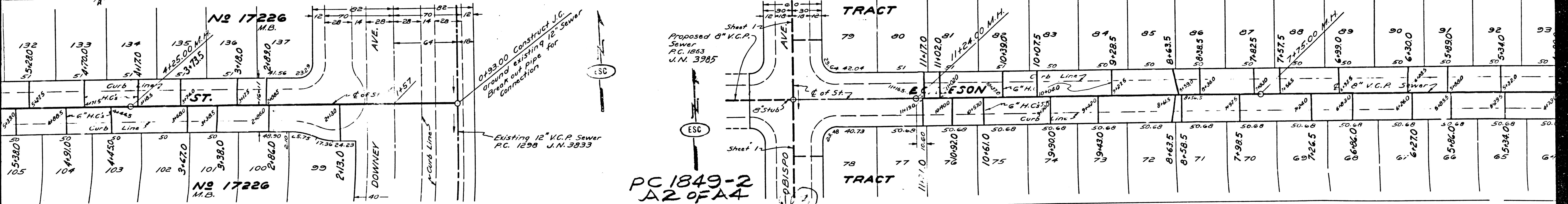
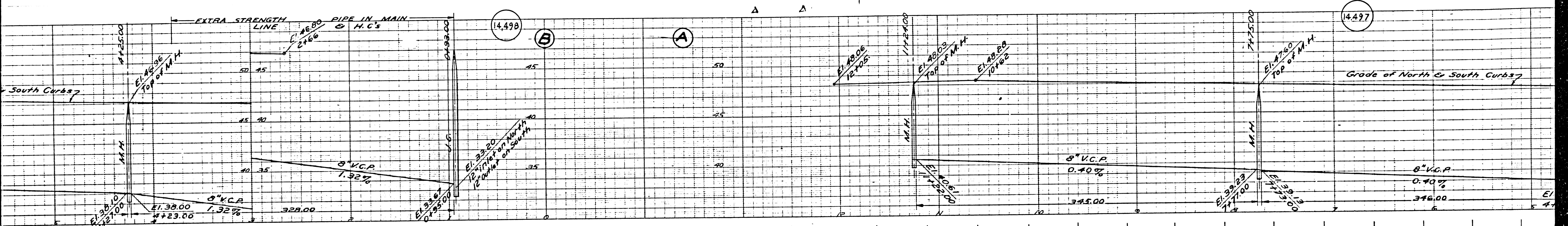
FOR LEGEND
 SEE PLAN NO. S-2-54
 FOR CONSTRUCTION NOTES SEE SHEET 1

before breaking into any existing structure
 and before final acceptance of this work,
 County Sanitation District should be notified
 in order that required inspection may be made.

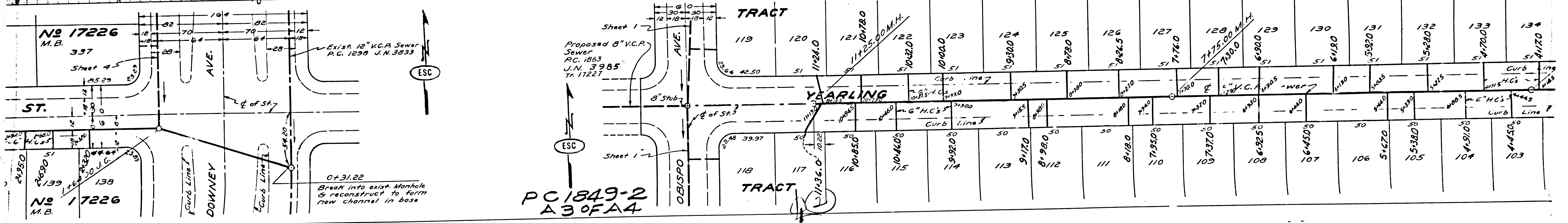
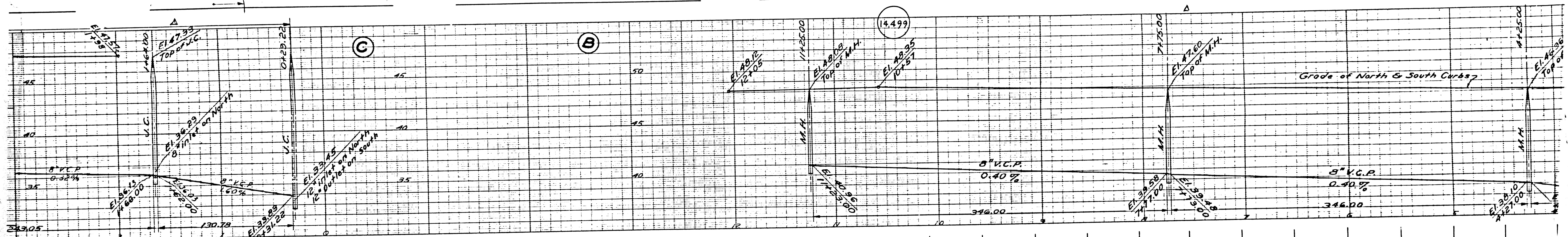
COUNTY OF LOS ANGELES, CALIFORNIA
 APPROVED: *[Signature]*
 COUNTY ENGINEER
 APPROVED BY: *[Signature]* OFFICE ENGINEER
 CHIEF ENGINEER OF COUNTY
 SANITATION DISTRICT NO 3
 CHECKED: *[Signature]* 8-18-51
 CHIEF OF COUNTY ENGINEER, FIG. C E NO 6412

PC 1849-2
 A1 OF A4

HARRISON 21.
 YEARLING 21.
 ECKLESON 21.
 HARDWICK 21.
 B.C. 1949
 L.S. W. 155E
 ⑤

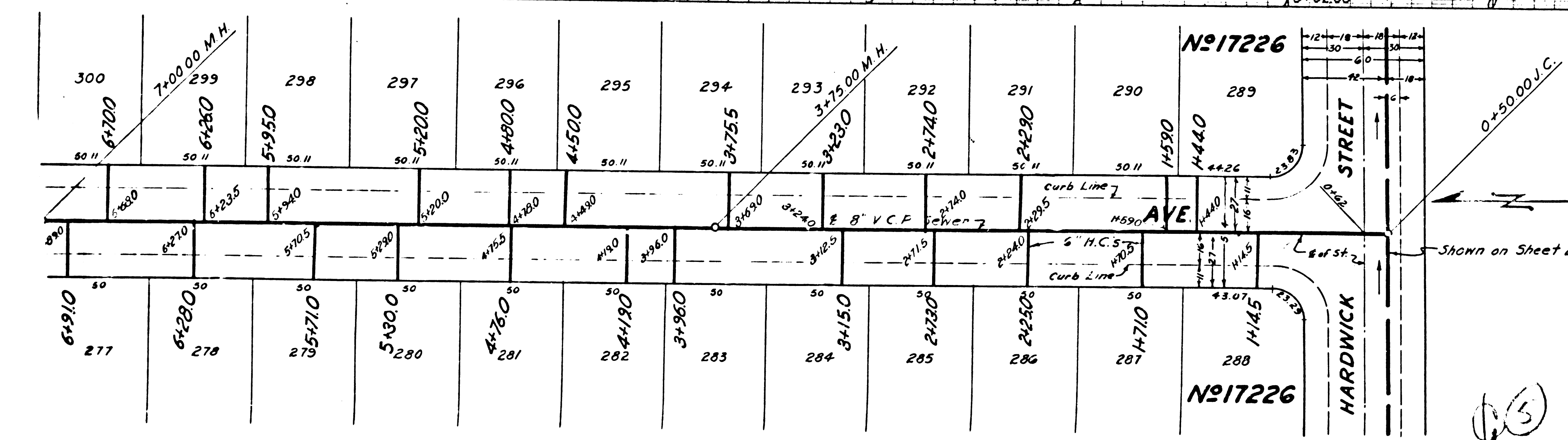
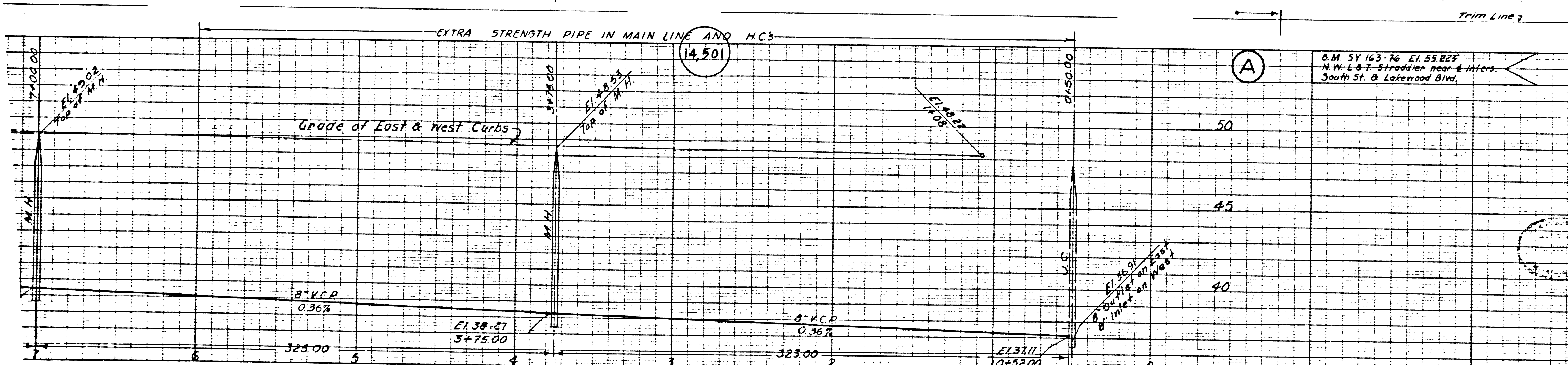


PC 1849-2
A2 OF A4



PC 1849-2
A30FA4

Date: 01/11/19
Scale: 1" = 10'



S.M. SY 163-76 E1 55 223
 N.W. & T. Straddles near & Inter.
 South St. & Lokenwood Blvd.

PROFILE, ALIGNMENT AND GRADE OF
SANITARY SEWERS (3)
 TO BE CONSTRUCTED BY
BIXLER AVE.
 BETWEEN HARDWICK ST. AND KLONDIKE AVE.
KLONDIKE AVE.
 BETWEEN CANDLEWOOD ST. AND HARDWICK ST.
LEVELSIDE AVE.
 BETWEEN CANDLEWOOD ST. AND HARDWICK ST.

PRIVATE CONTRACT NO. 1849
 W. S. 301
 SHEET 3 OF 4 SHEETS
 SCALE: HORIZ. 1"=40'
 VERT. 1"=4'
 JULY 1951

ENGINEERING SERVICE CORPORATION
 1127 A WASHINGTON BLVD
 LOS ANGELES 12, CALIF. PR. 1281

DESIGNED BY C.W.K.
 CHECKED BY K.S.
 QUANTITIES:

SUB STRUCTURES C.F.D.
 W. O. NO. DWG. NO. DATE SCALE L. B. P.
 5977-126 July 1951 VERT. 1"=4' HOR. 1"=40'

PREPARED IN THE OFFICES OF
 ENGINEERING SERVICE CORPORATION

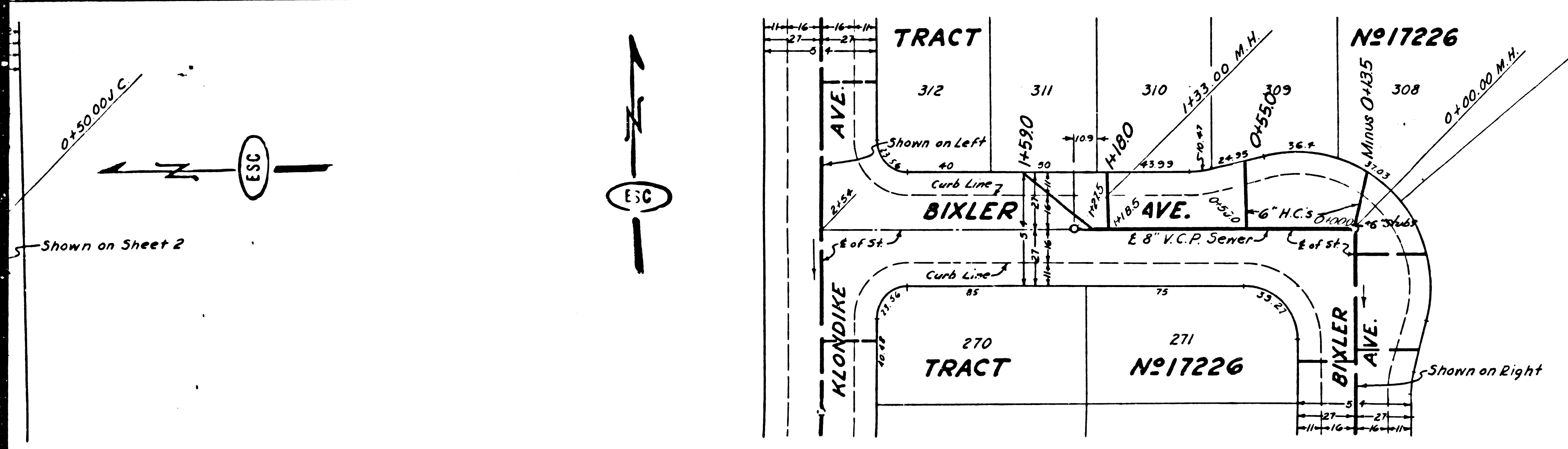
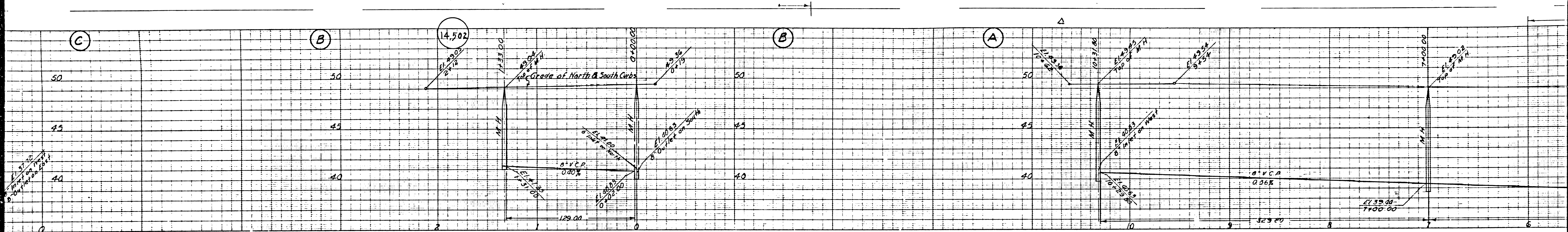
FOR LEGEND SEE PLAN NO. S-04
 FOR CONSTRUCTION NOTES SEE SHEET

Before breaking into any existing structure and before final acceptance of this work, County Sanitation District should be notified in order that required inspection may be made.

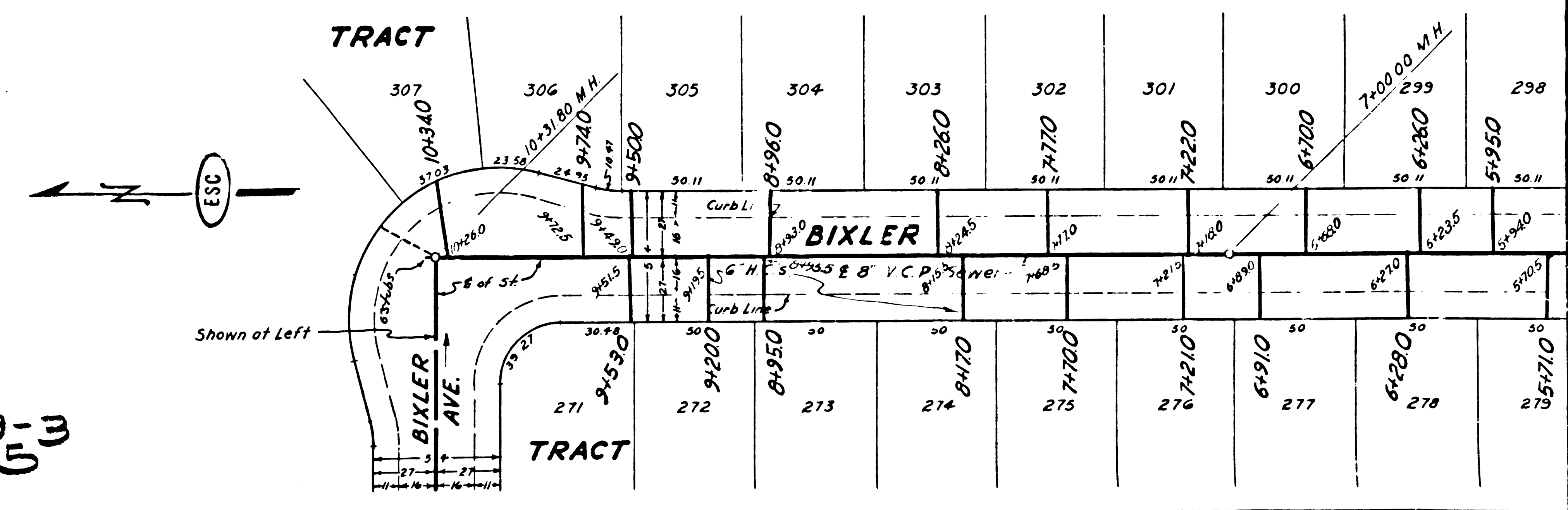
COUNTY OF LOS ANGELES, CALIFORNIA
 APPROVED: *[Signature]*
 COUNTY ENGINEER
 APPROVED BY: *[Signature]* OFFICE ENGINEER
 CHIEF ENGINEER OF COUNTY SANITATION DISTRICT NO. 3
 CHECKED: *[Signature]* 8-8-51
 OFFICE OF COUNTY ENGINEER 150 C. E. NO. 4912

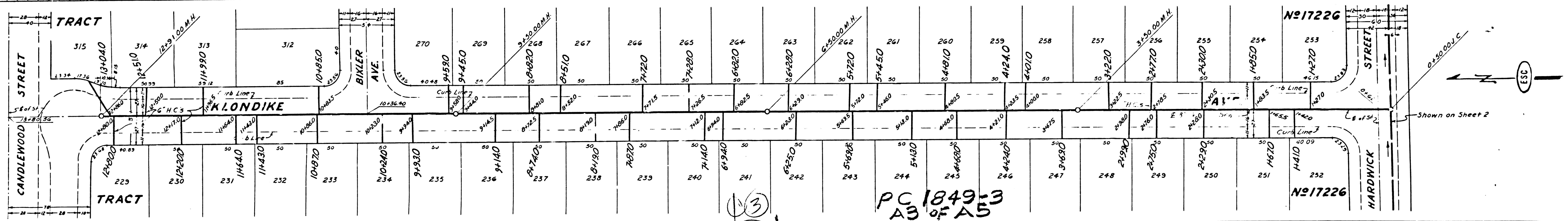
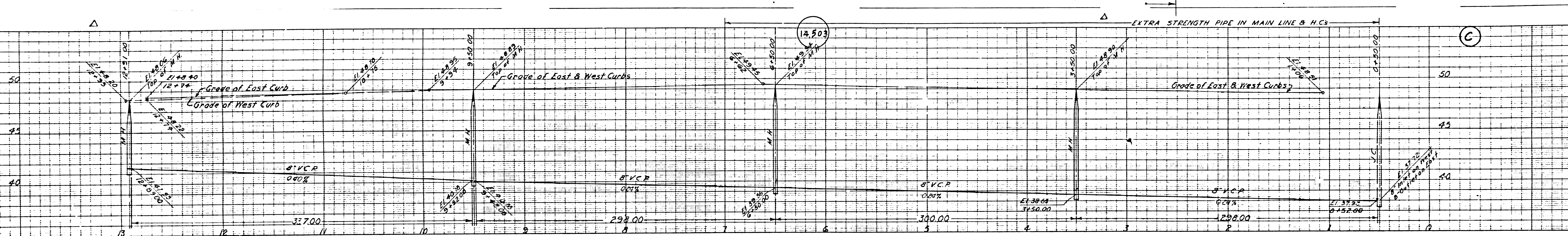
LEVELSIDE AVE.
 KLONDIKE AVE.
 BIXLER AVE.

B.C. 1849-3
 A.I. OF A. 5

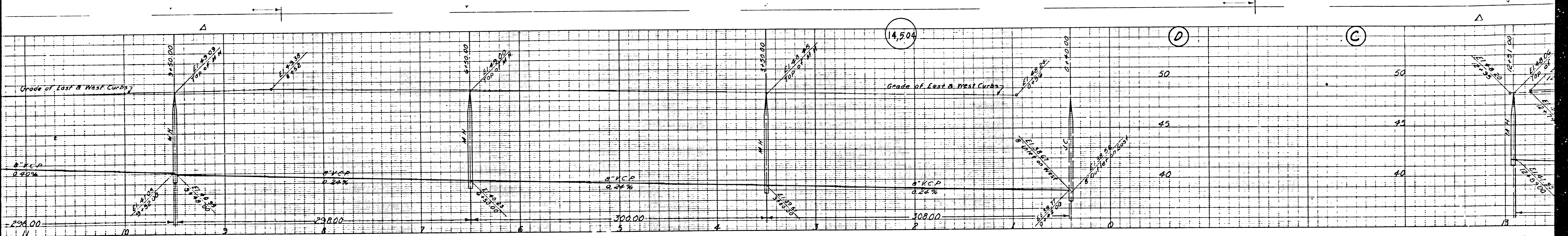


PC1849-3
A2 of A5

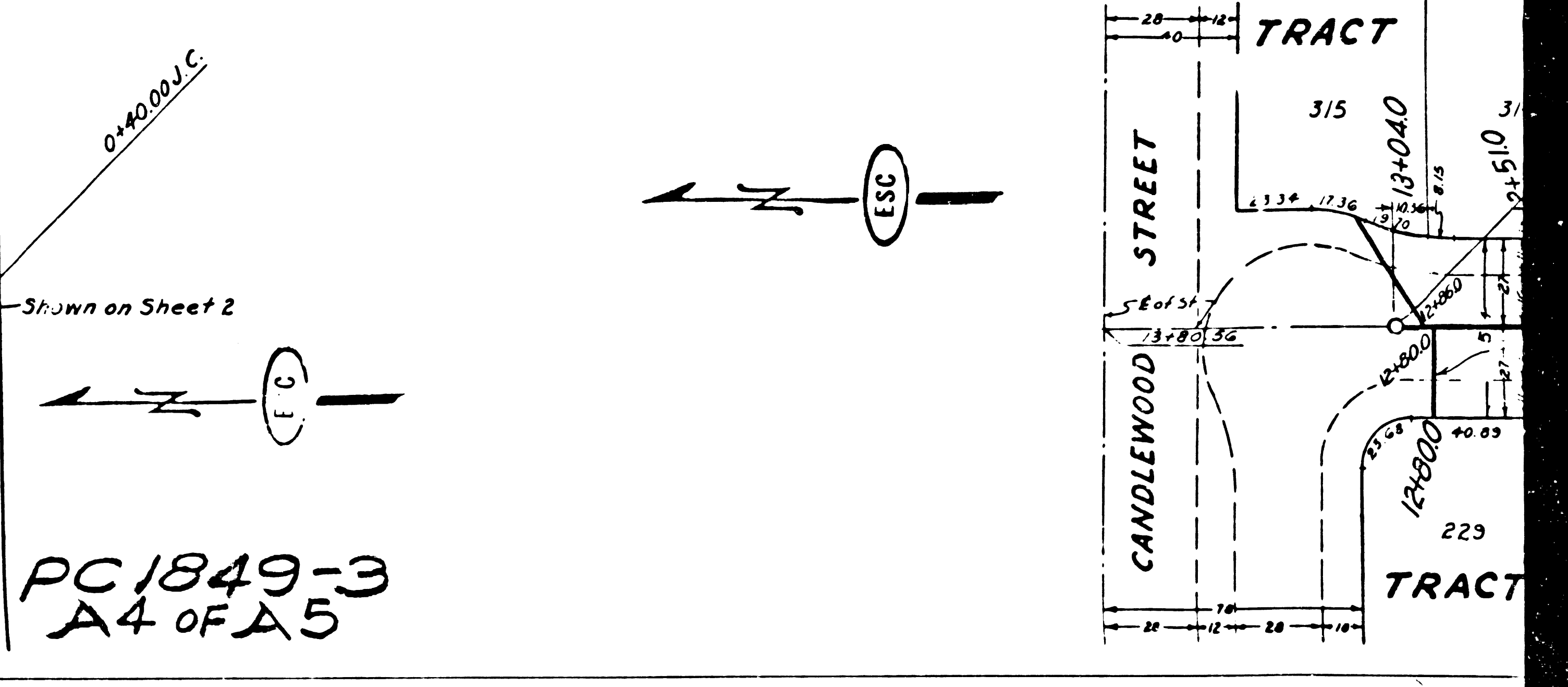




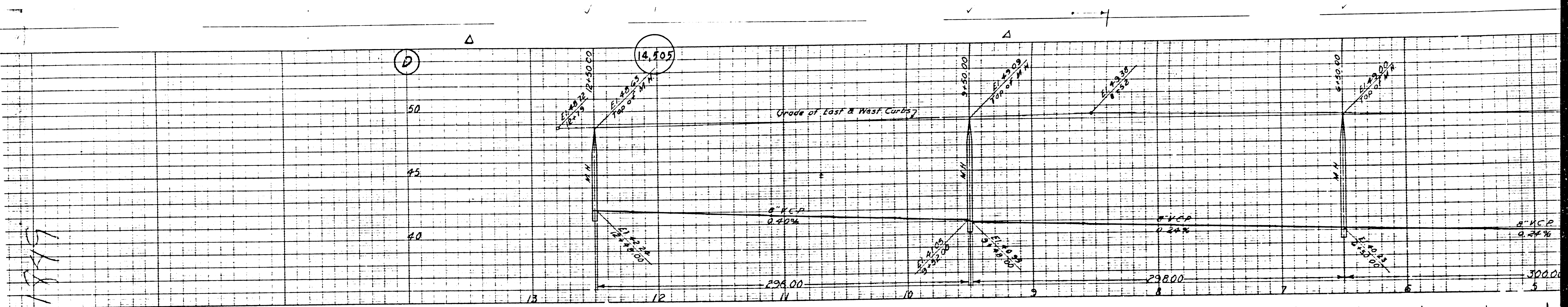
PC 1849-3
 AB OF A5



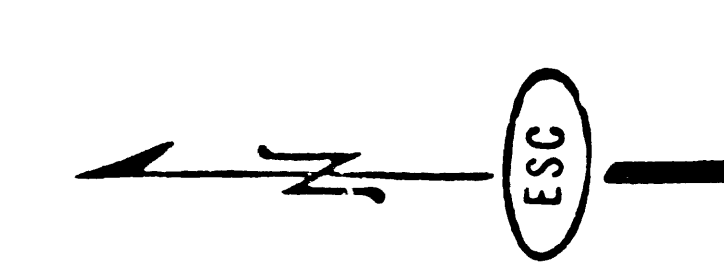
225	224	223	222	221	220	219	218	217	216	215	214	213	212	211	210	209	208	207	206	205	204	203	202	201	200	199	198	197	196	195	194	193	192	191	190	189	188	187	186	185	184								
10491.0	10481.0	10471.0	10461.0	10451.0	10441.0	10431.0	10421.0	10411.0	10401.0	10391.0	10381.0	10371.0	10361.0	10351.0	10341.0	10331.0	10321.0	10311.0	10301.0	10291.0	10281.0	10271.0	10261.0	10251.0	10241.0	10231.0	10221.0	10211.0	10201.0	10191.0	10181.0	10171.0	10161.0	10151.0	10141.0	10131.0	10121.0	10111.0	10101.0	10091.0	10081.0	10071.0	10061.0	10051.0	10041.0	10031.0	10021.0	10011.0	10001.0



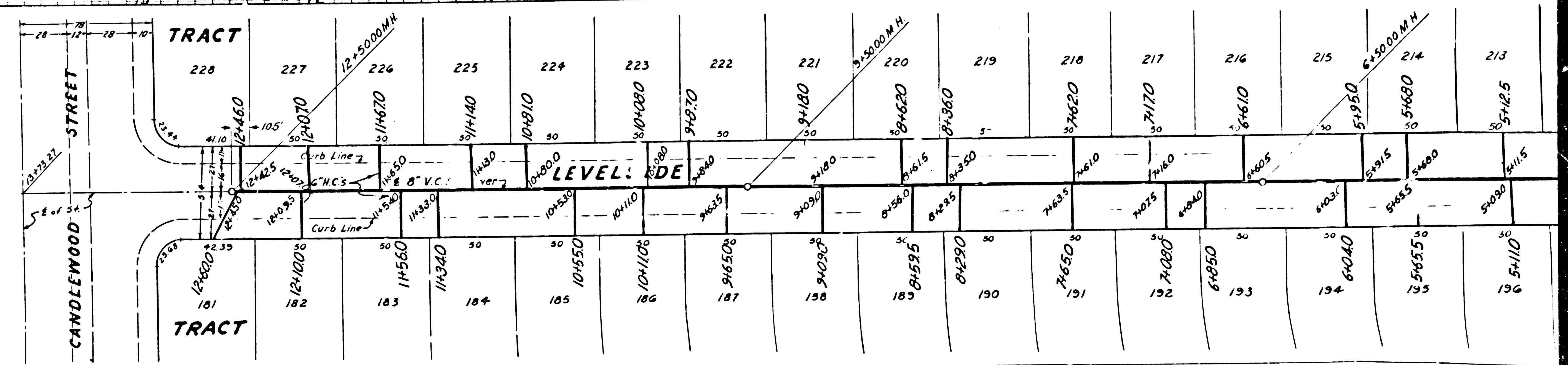
PC 1849-3
A4 OF A5

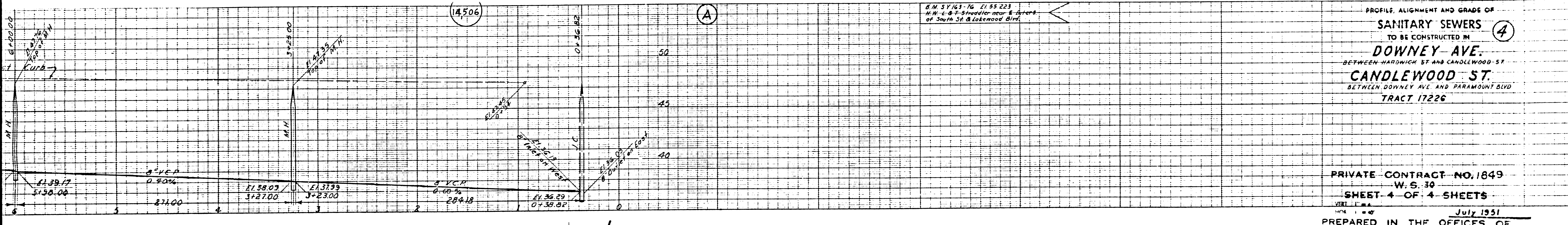


P.C. 1849



PC 1849-3
A5 OF A5

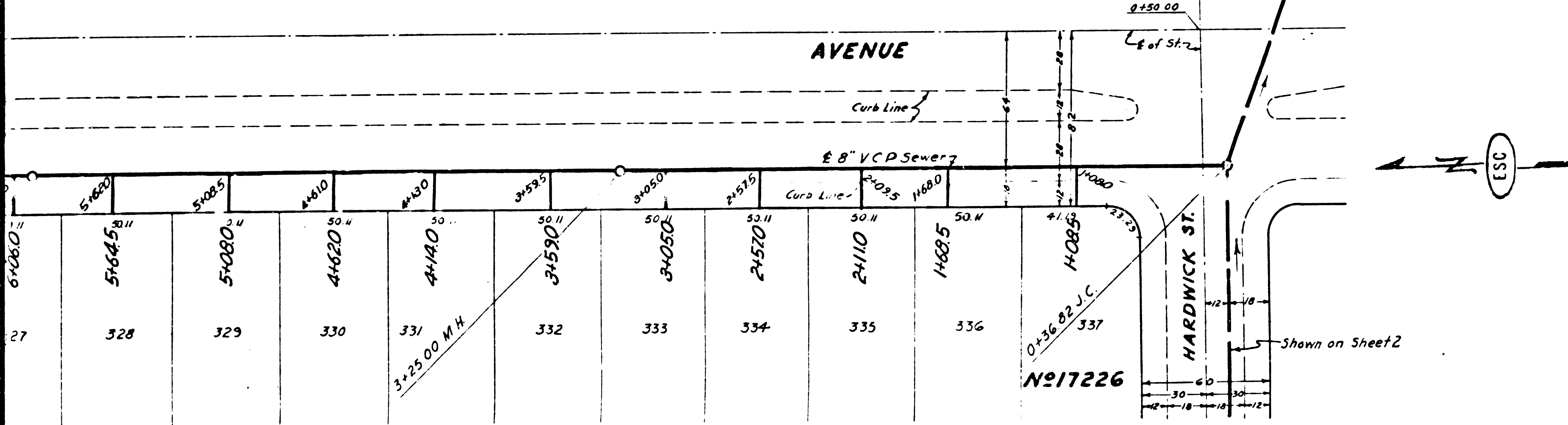




PROFILE, ALIGNMENT AND GRADE OF
SANITARY SEWERS ④
 TO BE CONSTRUCTED IN
DOWNEY AVE.
 BETWEEN HARDWICK ST AND CANDLEWOOD ST
CANDLEWOOD ST.
 BETWEEN DOWNEY AVE AND PARAMOUNT BLVD
 TRACT 17226

PRIVATE CONTRACT NO. 1849
 W. S. 30
 SHEET 4 OF 4 SHEETS

July 1951
 PREPARED IN THE OFFICES OF
 ENGINEERING SERVICE CORPORATION



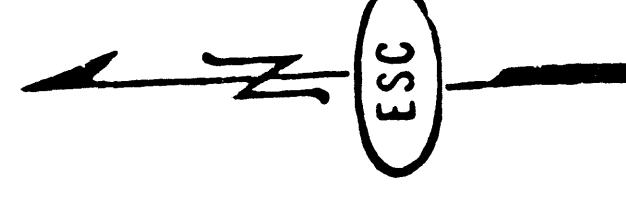
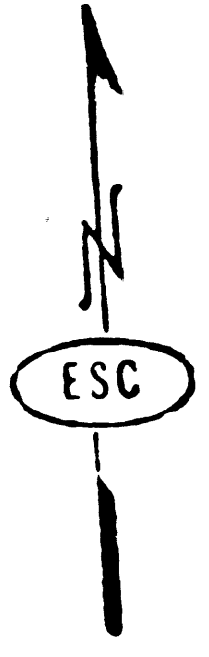
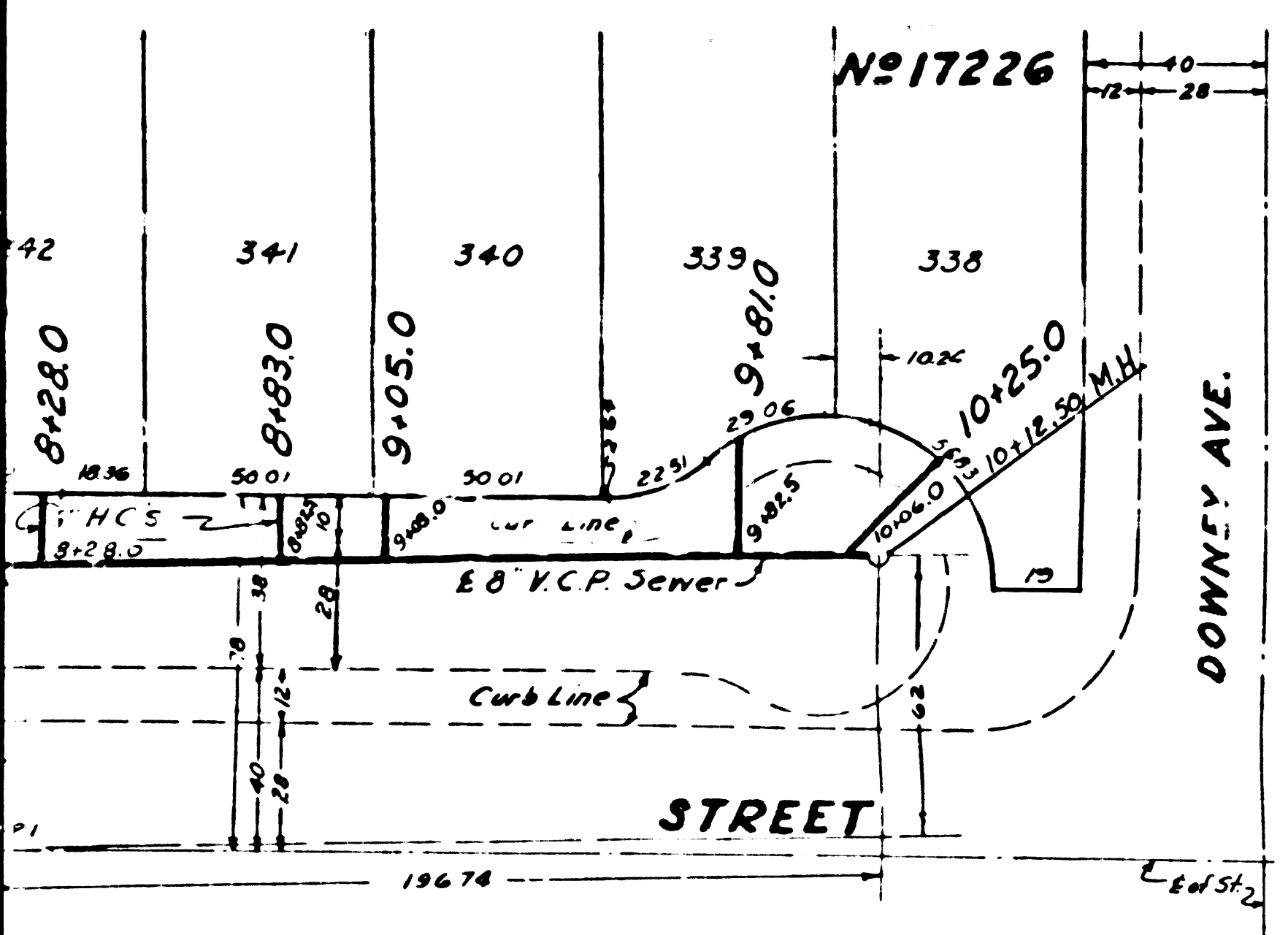
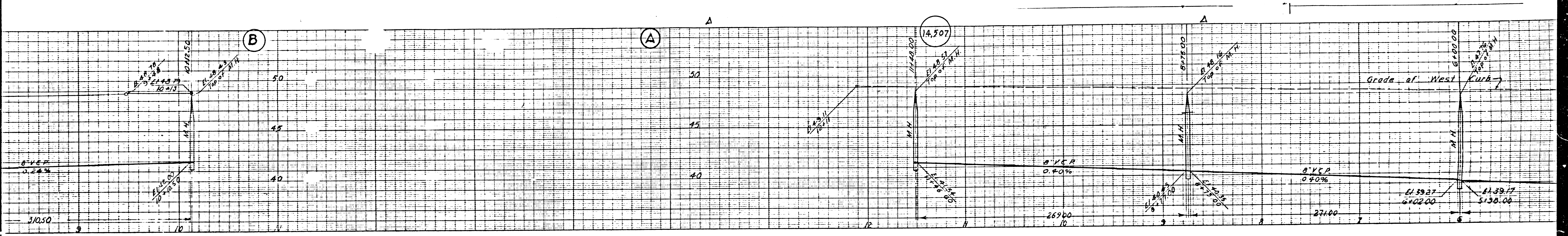
ENGINEERING SERVICE CORPORATION 1121 1/2 WASHINGTON BLVD LOS ANGELES 15 CALIF. PR. 7281	
REVISIONS	TRACED BY <u>S.M.K.</u>
	DESIGNED BY <u>K.S.</u>
	CHECKED BY _____
	SUBMITTED _____
SUB STRUCTURES CHECKED	
W.C.N.	DATE
5977-126	July 1951
	SCALE
	1" = 10'
	DATE
	JULY 1951

PC 1849-4
 A1 OF A4

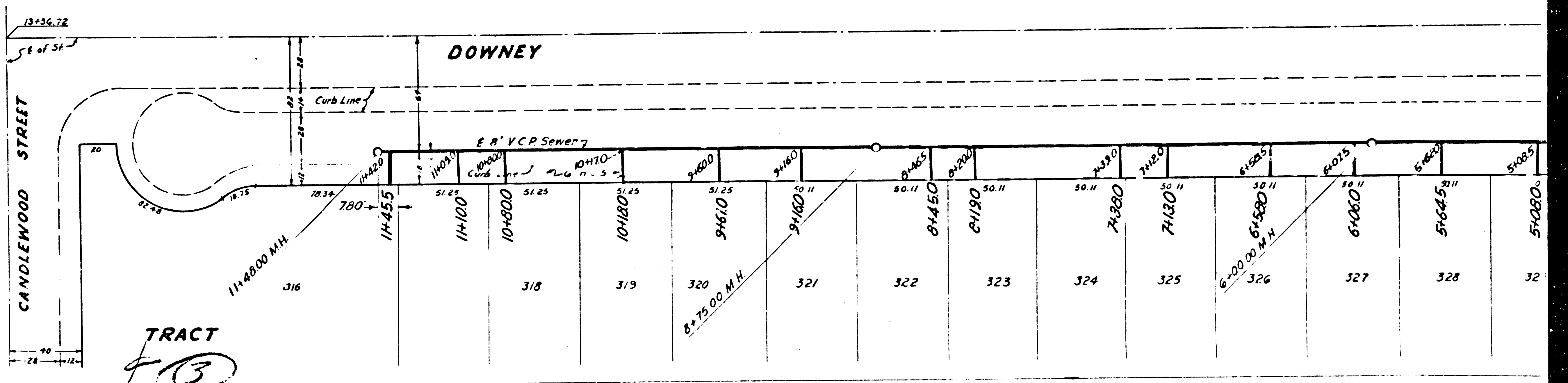
before breaking into any...
 and before final acceptance...
 County Sanitation District...
 by the owner...

COUNTY OF LOS ANGELES, CALIFORNIA
 APPROVED: [Signature]
 APPROVED: [Signature]
 CHECKED: [Signature]

E.A. [Signature]

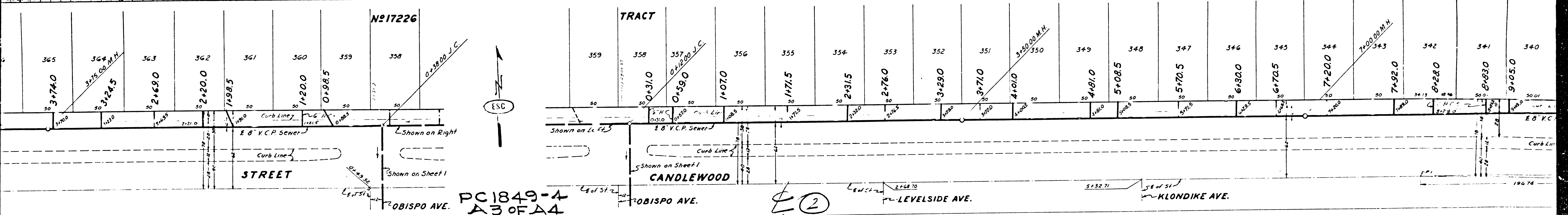
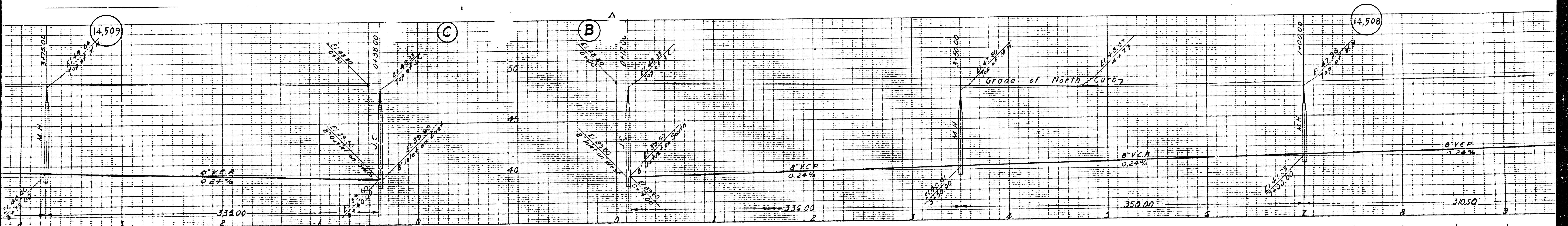


PC1849-4
A2 of A4



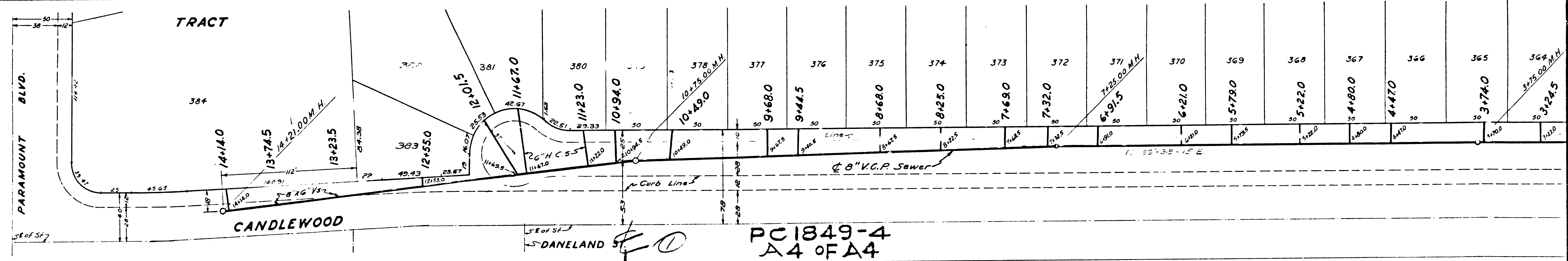
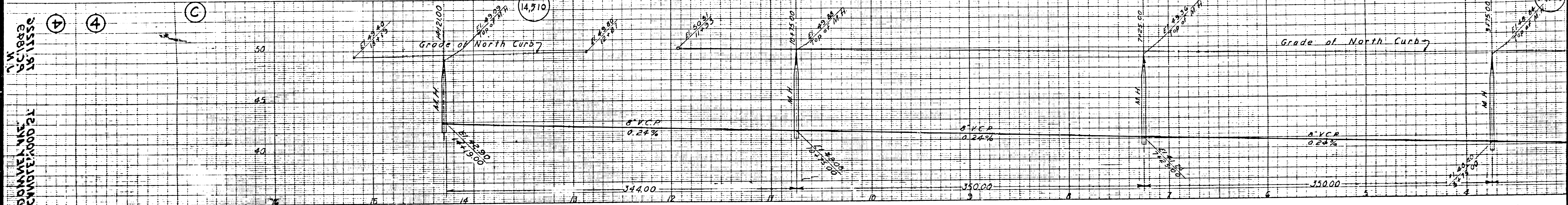
TRACT
E-13

Note: Lot 314 is Water Reservoir
Site Only IHC Regd



PC1849-A
A3 OF A4

②



PC1849-4
A4 OF A4



DOMINION MFG. CO. 1911
PC 1849-4
CANDLEWOOD ST.

24th Street

4

4

C

A

A

1

14,710

4

5 of 51
DANLAND ST