

B.M. SY 51-17. Elev. 153.926 C.S.  
 L.A. County Road Dept. Spike in lead N.W. cor. wser box.  
 S.E. cor. Passons Blvd. and Pacific Electric Ry. R/W.

13.901

- (1) USE STANDARD MANHOLE FRAME AND COVER, S-a-117
- (2) USE STANDARD STRENGTH PIPE (EXCEPT AS NOTED)
- (3) USE CEMENT MORTAR FOR ALL VITRIFIED CLAY PIPE JOINTS.
- (4) RESURFACE ALL TRENCH WITHIN PAVED AREA TO MEET LOS ANGELES COUNTY ROAD DEPT. REQUIREMENTS IN ACCORDANCE WITH PERMIT.
- (5) ALL STRUCTURES SHALL BE BRICK SEWER STRUCTURES, S-a-104

STOPPERS TO BE INSTALLED WITH JOINT COMPOUND BY MANUFACTURER AT THIS POINT. SPEC'S. SEE 32-42.  
 CONCRETE PAVEMENT TO BE CUT NOT LESS THAN 2" IN DEPTH WITH CONCRETE SAW. SPEC'S. SEC. 65.

NOTE: NO REPRESENTATIVE OF THE COUNTY ENGINEER WILL SURVEY OR LAY OUT ANY PORTION OF THE WORK. THE OWNER OR HIS AUTHORIZED REPRESENTATIVE SHALL FURNISH THE COUNTY ENGINEER WITH GRADE SHEETS, STATIONS OF ALL HOUSE CONNECTIONS AND Y BRANCHES AND SHALL PROVIDE STAKES FOR THEM AT THEIR PROPER LOCATIONS, WITH STAKING PLANTS MARKED. ANY CHANGE OF LOCATION SHALL BE REQUESTED IN WRITING BY THE OWNER OR HIS REPRESENTATIVE.  
 NO REVISIONS SHALL BE MADE IN THESE PLANS WITHOUT APPROVAL OF THE COUNTY ENGINEER.  
 NOTE: PROVIDE STAKES ON THE PROPERTY LINES OR PROPERTY LINES PRODUCED AT RIGHT ANGLES TO THE SEWER LINE AT THE CENTER LINE OF EACH MANHOLE.

PROFILE, ALIGNMENT AND GRADE OF  
**SANITARY SEWER**  
 TO BE CONSTRUCTED IN  
**BUHMAN AVENUE**  
 BETWEEN BURKE STREET AND A POINT 180 FT. SOUTHERLY THEREOF

PRIVATE CONTRACT NO. 1873  
 W.S. 36  
 SHEET 1 OF 1 SHEET

SCALE: VERT. 1" = 4'  
 HORIZ. 1" = 40'

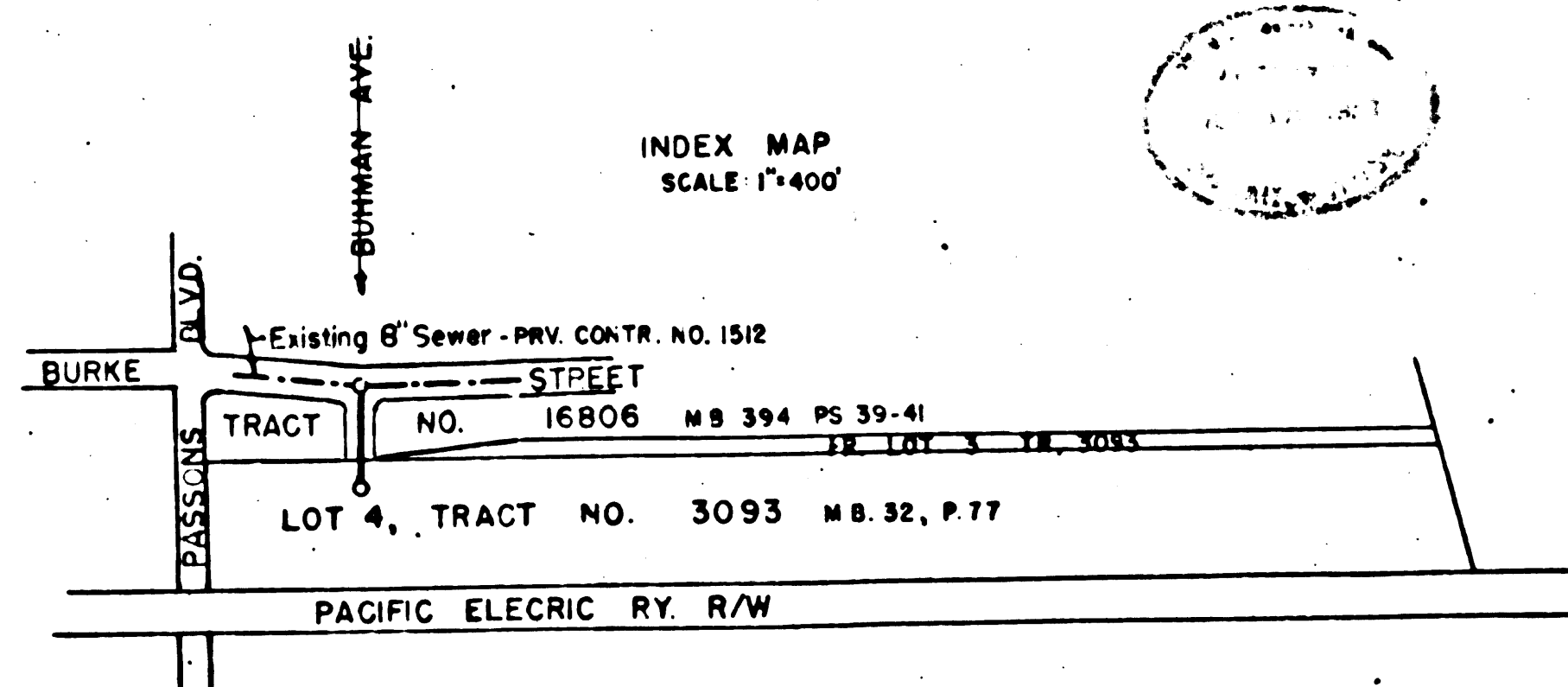
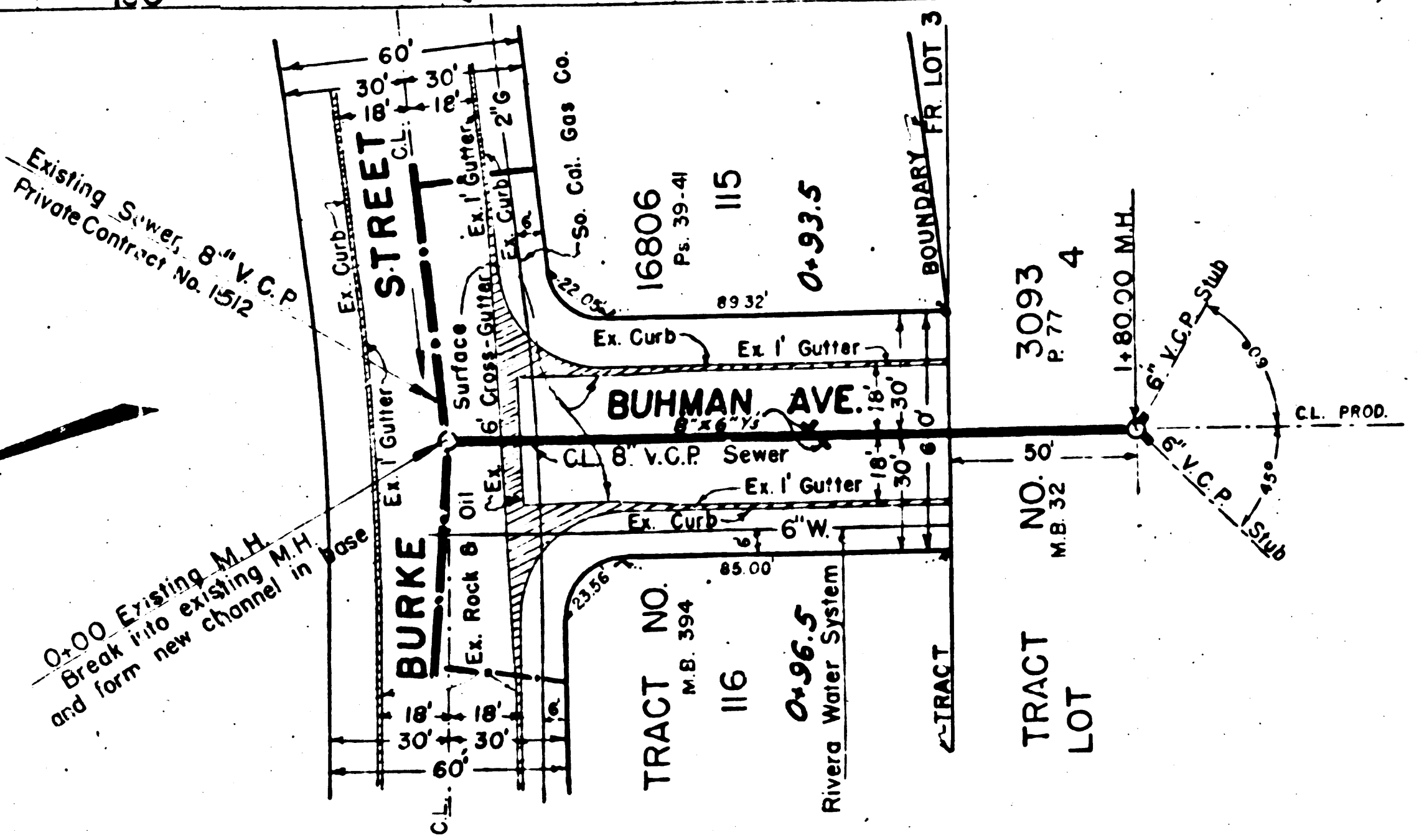
PREPARED IN THE OFFICE OF  
**RAYMOND SPALDING**

*Raymond Spalding*  
 Raymond Spalding REG. E. NO. 2035

FOR LEGEND  
 SEE PLAN NO. S-0-64

NOTE:  
 GRADES TO WHICH THIS IMPROVEMENT IS TO BE CONSTRUCTED ARE SHOWN ON PLAN AND PROFILE.  
 GRADE POINTS FOR TOP OF CURB, CENTER LINE OF STREET OR CENTER LINE OF ALLEY ARE SHOWN BY CIRCLES ON PROFILES. AT ALL POINTS BETWEEN DESIGNATED POINTS THE GRADE SHALL BE ESTABLISHED SO AS TO CONFORM TO A STRAIGHT LINE DRAWN BETWEEN SAID DESIGNATED POINTS.  
 ELEVATIONS ARE IN FEET ABOVE U.S.C. & G.S. DATUM OR MEAN SEA LEVEL.  
 THIS DRAWING AND THE DATA HEREON ARE HEREBY MADE A PART OF THE SPECIFICATIONS. THE WORK SHALL BE CONSTRUCTED ACCORDING TO SPECIFICATIONS ON FILE IN THE OFFICE OF THE COUNTY ENGINEER AND SHALL BE PROSECUTED ONLY IN THE PRESENCE OF THE COUNTY ENGINEER. BEFORE WORK CAN BE STARTED, THE CONTRACTOR MUST OBTAIN A PERMIT TO EXCAVATE IN DEPOSIT WITH THE COUNTY ENGINEER, 828 L.A. COUNTY ENGINEERING BLDG., SUFFICIENT TO COVER THE COST OF CONSTRUCTION INSPECTION AND RECORD PLANS.  
 APPROVAL OF THIS PLAN BY THE COUNTY OF LOS ANGELES DOES NOT CONSTITUTE A REPRESENTATION AS TO THE ACCURACY OF THE LOCATION OF, OR THE EXISTENCE OR NON-EXISTENCE OF ANY UNDERGROUND UTILITY, PIPE OR STRUCTURE WITHIN THE LIMITS OF THIS PROJECT.

before working into any existing structure and before final acceptance of this work, County Sanitation District should be notified in order that required inspection may be made.



PC 1873  
 J.N. 4002

EO

July 12-13-51 K.L.L.

COUNTY OF LOS ANGELES, CALIFORNIA.

APPROVED BY *[Signature]* COUNTY ENGINEER  
 APPROVED BY *[Signature]* ASSESSOR OF COUNTY ENGINEER OF COUNTY SANITATION DISTRICT NO. 2

CHECKED BY *[Signature]* OFFICE OF COUNTY ENGINEER REG. E. NO. 7460

BC 1033

