

Use Standard strength pipe (except as noted).
Use Cement Mortar for all Vitrified Clay pipe joints.
Enclose four feet of sewer at points of interference with poles as per 5-a-19.
All structures shall be brick sewer structures as per Plan No. S-a-104.
Use standard manhole frames and covers as per Plan No. S-a-117.
Resurface all trenches within paved area to meet Los Angeles County Road Dept. requirements.
House connection to be constructed on 1/4" rise per foot to property line (1/4")
No revisions shall be made in these plans without approval of the County Engineer.
No representative of the County Engineer will witness or lay out any portion of the work.
The Owner or his authorized representative shall furnish the County Engineer with grade changes and location of all house connections and Y-brackets and shall provide shales for them at their proper locations with adjoining property marked. Any change in location shall be indicated in writing by the owner or his representative.
Before any connections for the disposal of liquid household waste is to be made to this sewer, sewerage works shall be subjected to a test to insure accuracy. The County Engineer Sanitation District must be notified before work can start. Underground - Note.
Approval of this plan by the County of Los Angeles does not constitute a representation as to the accuracy of the location or of the existence of manholes or any underground pipe, utility or structure within the limits of this project.
Sewers to be installed with joint material by the manufacturer at his plant. Specs. Sec. 35, 48.
Concrete pavement to be cut not less than 2' in depth with concrete saw Spec. Sec. 65.

PROFILE, ALIGNMENT AND GRADE OF
SANITARY SEWER
TO BE CONSTRUCTED IN
ANAHEIM TELEGRAPH ROAD
FROM
MALT AVE 1100' WESTERLY
AND IN
PRIVATE ST. EASTERLY OF MALT AVE
PRIVATE CONTRACT NO. 1883
W.S. 36
SHEET 1 OF 1 SHEET

PREPARED IN THE OFFICES OF
CENTRAL MANUFACTURING DISTRICT, INC.
BY *Robert J. Campbell*
REG. C.E. NO. 1985
OCTOBER 1951

SCALE: VERT. 1"=4'
HORIZ. 1"=40'

FOR LEGEND
SEE PLAN NO. S-a-64

GRADES TO WHICH THIS IMPROVEMENT IS TO BE CONSTRUCTED ARE SHOWN ON PLANS AND PROFILES GRADE POINTS FOR TOP OF CURB CENTER LINE OF STREET OR CENTER LINE OF ALLEY ARE SHOWN BY CIRCLES ON PROFILES AT ALL POINTS BETWEEN DESIGNATED POINTS THE GRADE SHALL BE ESTABLISHED SO AS TO CONFORM TO A STRAIGHT LINE BETWEEN SAID DESIGNATED POINTS.
ELEVATIONS ARE IN FEET ABOVE U.S.C.S. DATUM OR MEAN SEA LEVEL.
THIS DRAWING AND THE DATA HEREON ARE HEREBY MADE A PART OF THE SPECIFICATIONS WORK SHALL BE CONSTRUCTED ACCORDING TO SPECIFICATIONS ON FILE IN THE OFFICE OF THE COUNTY ENGINEER AND SHALL BE PROSECUTED ONLY IN THE PRESENCE OF THE COUNTY ENGINEER.
BEFORE WORK CAN BE STARTED THE CONTRACTOR MUST OBTAIN A PERMIT TO EXCAVATE IN COUNTY STREETS FROM THE L.A. COUNTY ROAD DEPT. 211 SOUTH MAIN ST. AND MAKE A DEPOSIT WITH THE COUNTY ENGINEER, 888 L.A.C.D. ENGINEER, BLDG. SUFFICIENT TO COVER THE COST OF CONSTRUCTION INSPECTION AND RECORD PLANS.

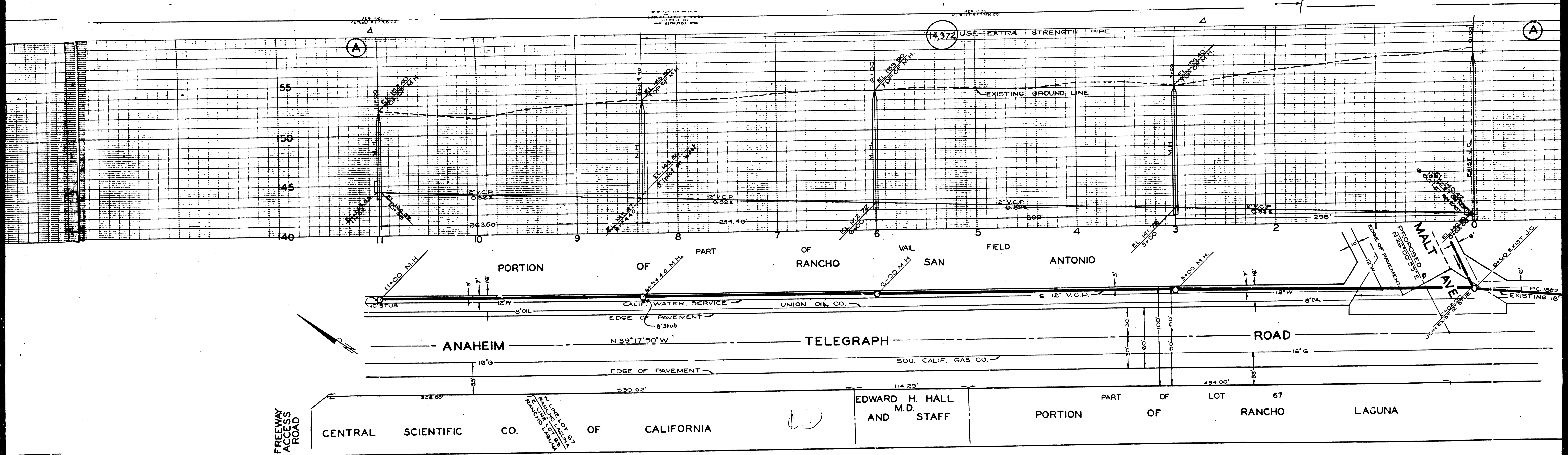
COUNTY OF LOS ANGELES CALIFORNIA
WILLIAM J. FOX COUNTY ENGINEER

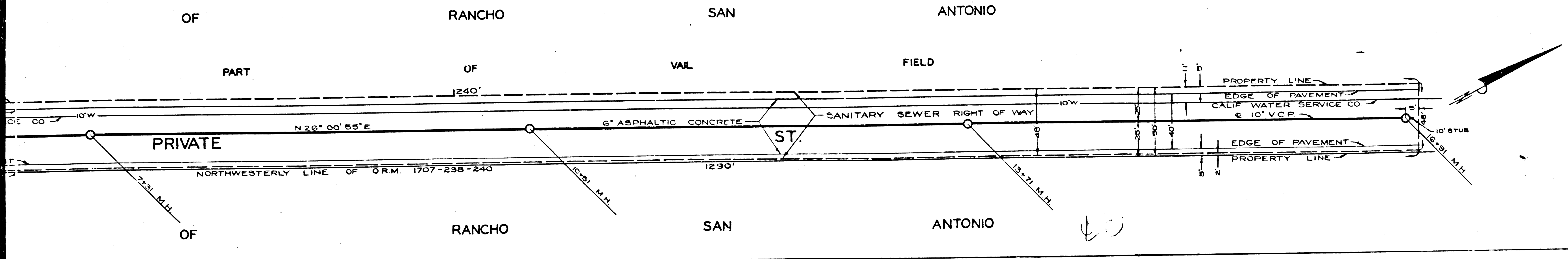
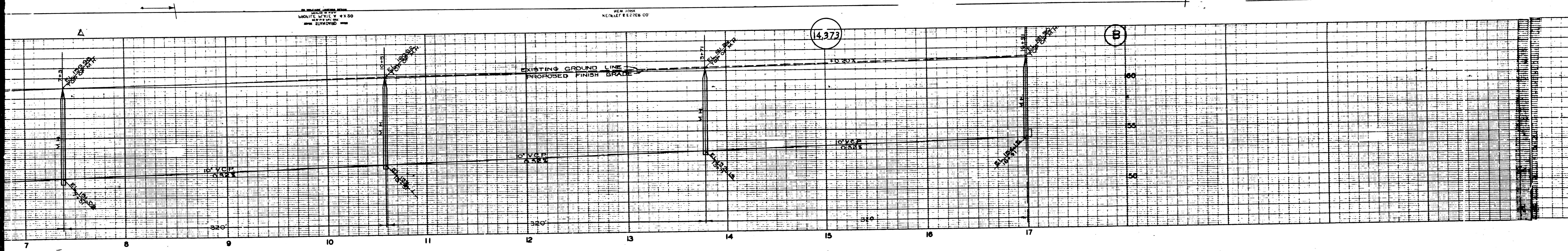
APPROVED BY *W. J. Fox* DEPUTY
A.M. RAWN OFFICE ENGINEER
CHIEF ENGINEER OF COUNTY SANITATION DISTRICT NO. 2

and before final acceptance of this work,
County Sanitation District should be notified
In order that a final inspection may be made.

CHECKED BY *H.L. Spaulding*
OFFICE OF COUNTY ENGINEER REG. C.E. NO. 647

DEC 13 1951





OF RANCHO SAN ANTONIO

PART OF VAIL FIELD

PRIVATE NORTHWESTERLY LINE OF O.R.M. 1707-238-240

RANCHO SAN ANTONIO

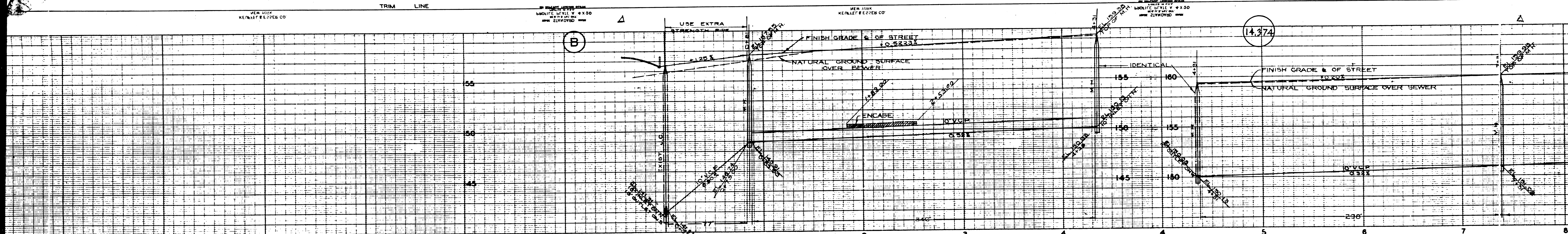
TRIM LINE

TRIM LINE

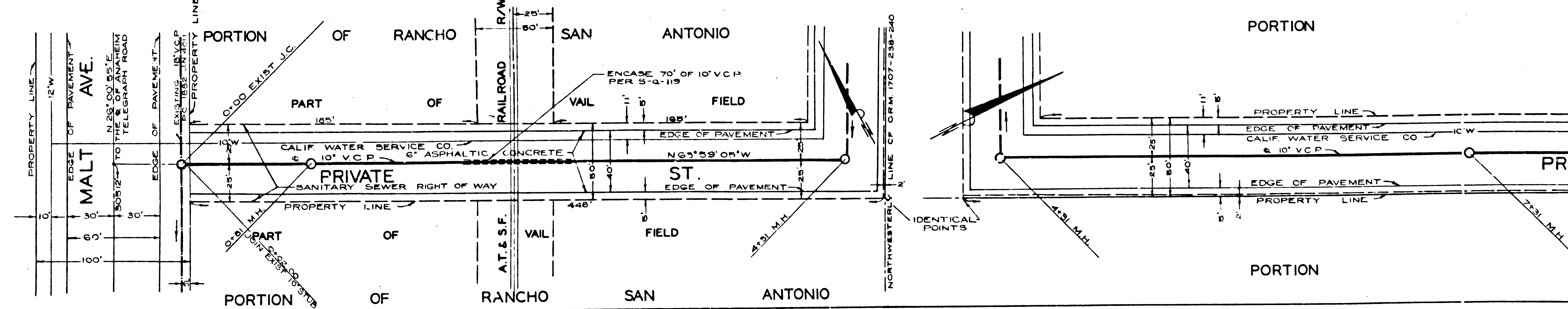
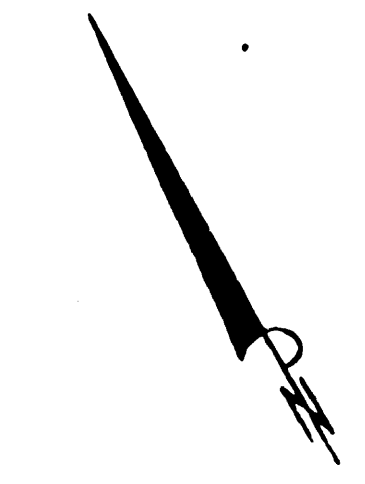
TRIM LINE

USE EXTRA STRENGTH PIPE

USE EXTRA STRENGTH PIPE



PC 1703



TRIM LINE