

13,994

B.M. 21 81.39, 44.9' LFT in Curb  
L.A. County, published at 212 Cal. Eng. Division  
Ave. & 1st Alley N. of 100' W. St.

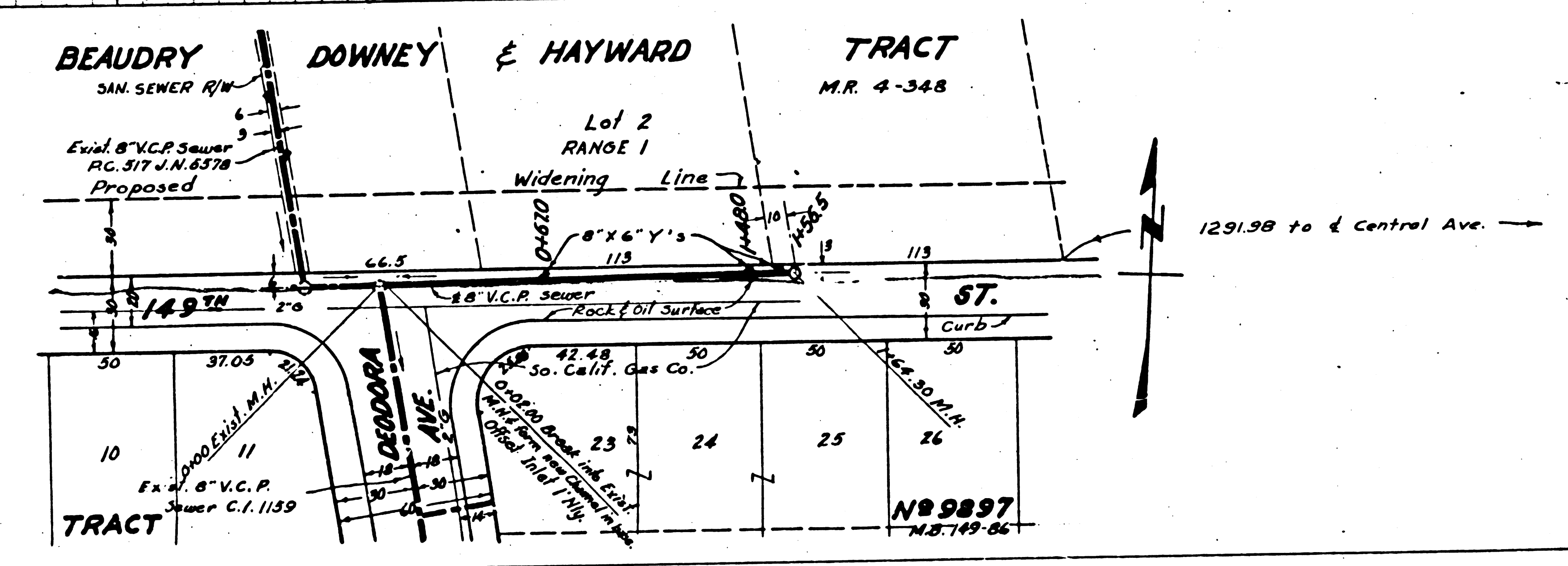
(1) USE STANDARD MANHOLE FRAME AND COVER, 6-0-117  
(2) USE EXTRA STRENGTH PIPE  
(3) USE CEMENT MORTAR FOR ALL VITRIFIED CLAY PIPE  
(4) RESURFACE ALL TRENCH WITHIN PAVED AREA TO MEET LOS ANGELES COUNTY ROAD DEPARTMENT OR CALIFORNIA STATE HIGHWAY REQUIREMENTS IN ACCORDANCE WITH PERMIT (PLEASE FOUR FEET OF SEWER AT POINT OF INTERFERENCE WITH CURB) AS PER 15-2-115  
(5) ALL STRUCTURES SHALL BE BRICK SEWER STRUCTURES 8'-0" (EXCEPT AS NOTED)

NOTE:  
NO REPRESENTATIVE OF THE COUNTY ENGINEER WILL SURVEY OR LAYOUT ANY PORTION OF THE WORK.  
NO REVISIONS SHALL BE MADE IN THESE PLANS WITHOUT APPROVAL OF THE COUNTY ENGINEER.  
SEWERS TO BE INSTALLED WITH JOINT COMPOUND BY MANUFACTURER AT HIS PLANT. SPEC'S SEC. 33.4B.  
CONCRETE PAVEMENT TO BE CUT NOT LESS THAN 2" IN DEPTH WITH CONCRETE SAW SPEC'S SEC. 65.  
SMALL HOLE PIPES PER SPEC'S 66-1-10

PROFILE ALIGNMENT AND GRADE OF  
**SANITARY SEWERS**  
TO BE CONSTRUCTED IN  
**14.9' W. ST.**  
EAST OF WADSWORTH AVE.

PRIVATE CONTRACT NO. 1909  
W.B. 26  
SHEET 1 OF 1 SHEET  
PREPARED IN THE OFFICES OF

RALPH B. NUNNELLEY CIVIL ENGINEER  
BY: Ralph B. Nunnelley REG. C.E. NO. 8080



INDEX MAP  
Scale 1" = 600'  
P.C. 1909 J.N. 4039

NOTE:  
CRADIS TO WHICH THIS IMPROVEMENT IS TO BE CONSTRUCTED ARE SHOWN ON PLANS AND PROFILE. GRADE POINTS FOR TOP OF CURB, CENTER LINE OF STREET OR CENTER LINE OF ALLEY ARE SHOWN BY CIRCLES OR PROFILES. AT ALL POINTS BETWEEN DESIGNATED POINTS THE GRADE SHALL BE ESTABLISHED SO AS TO CONFORM TO A STRAIGHT LINE DRAWN BETWEEN SAID DESIGNATED POINTS.  
ELEVATIONS ARE IN FEET ABOVE U.S. & M. DATUM OR MEAN SEA LEVEL.  
THIS DRAWING AND THE DATA HEREON ARE HEREBY MADE A PART OF THE SPECIFICATIONS FOR THE WORK. BEFORE WORK CAN BE STARTED, THE CONTRACTOR MUST OBTAIN A PERMIT TO EXCAVATE IN COUNTY STREETS FROM THE L.A. COUNTY ROAD DEPT., 108 W. 2ND ST., AND MAKE A DEPOSIT WITH THE COUNTY ENGINEER, 520 L.A. COUNTY ENGINEERING BLDG., SUFFICIENT TO COVER THE COST OF CONSTRUCTION INSPECTION AND RECORD PLANS.  
IF WORK IS TO BE DONE IN A STATE HIGHWAY, A PERMIT MUST BE OBTAINED FROM THE STATE OF CALIFORNIA, DIVISION OF HIGHWAYS, 150 S. SPRING ST., AFTER MAKING THE DEPOSIT WITH THE COUNTY ENGINEER.  
APPROVAL OF THIS PLAN BY THE COUNTY OF LOS ANGELES DOES NOT CONSTITUTE A REPRESENTATION AS TO THE ACCURACY OF THE LOCATION OF OR THE EXISTENCE OR NON-EXISTENCE OF ANY UNDERGROUND UTILITY PIPE OR STRUCTURE WITHIN THE LIMITS OF THIS PROJECT (THIS NOTE APPLIES TO ALL SHEETS)

COUNTY OF LOS ANGELES, CALIFORNIA  
APPROVED WILLIAM J. FOX COUNTY ENGINEER OFFICE BLDG.  
BY: H. H. [Signature] COUNTY DEPUTY  
CHECKED BY H. H. [Signature] 10-23-52  
CHIEF ENGINEER 16 6412

Before breaking into any existing structure and before final acceptance of this work, County Sanitation District should be notified in order that required inspection may be made.

149th St. 149th St. 149th St. 149th St. 149th St.

