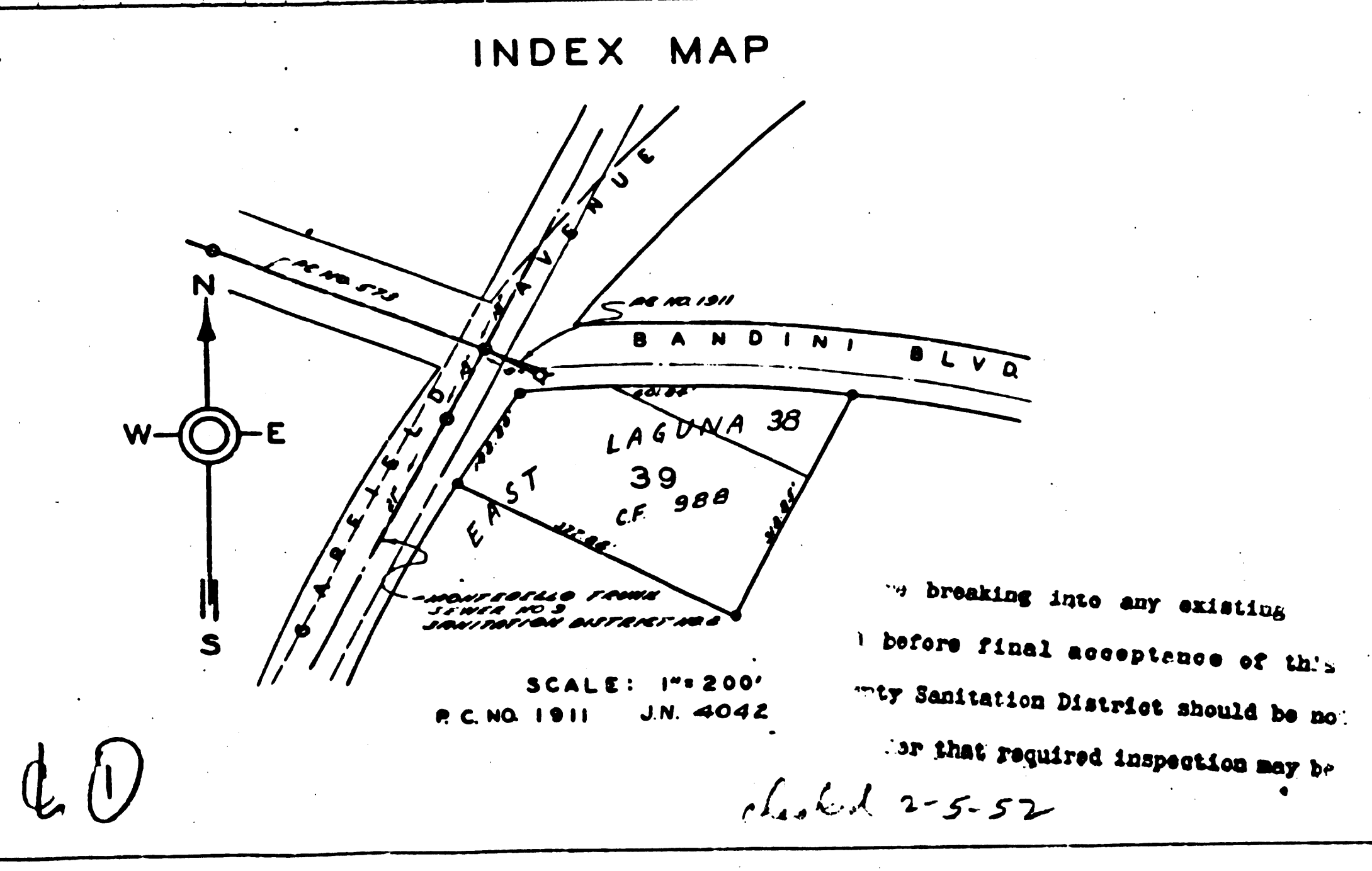
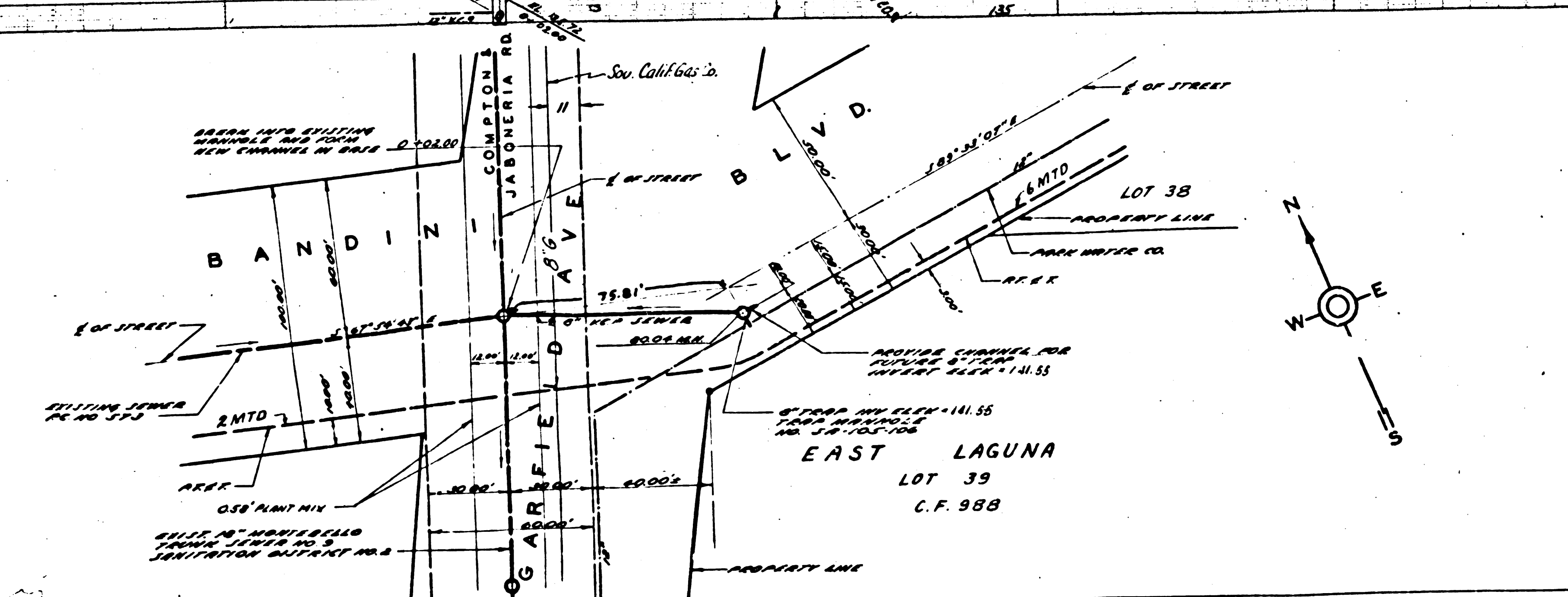


(14,049)	
PROFILE ALIGNMENT AND GRADE OF SANITARY SEWER TO BE CONSTRUCTED AT THE INTERSECTION OF BANDINI BLVD AND GARFIELD AVE.	
REV.	
PRIVATE CONTRACT NO. 1911 W.S. 36 1 SHEET	
SCALE: VERT. 1"=4'-0"	DATE: OCT 1951
PREPARED IN THE OFFICES OF LESTER R. KELLY CONSULTING ENGINEER	

PC 1911



FOR LEGEND
SEE PLAN NO. S-A-64

NOTE:
GRADES TO WHICH THIS IMPROVEMENT IS TO BE CONSTRUCTED ARE SHOWN ON PLANS AND PROFILE. GRADE POINTS FOR TOP OF CURB, CENTER LINE OF STREET OR CENTER LINE OF ALLEY ARE SHOWN BY CIRCLES ON PROFILE. AT ALL POINTS BETWEEN DESIGNATED POINTS THE GRADE SHALL BE ESTABLISHED SO AS TO CONFORM TO A STRAIGHT LINE DRAWN BETWEEN SAID DESIGNATED POINTS.
ELEVATIONS ARE IN FEET ABOVE U.S.G.S. DATUM OR MEAN SEA LEVEL.
THIS DRAWING AND THE DATA HEREON ARE HEREBY MADE A PART OF THE SPECIFICATIONS. WORK SHALL BE CONSTRUCTED ACCORDING TO SPECIFICATIONS ON FILE IN THE OFFICE OF THE COUNTY ENGINEER AND SHALL BE PROSECUTED ONLY IN THE PRESENCE OF THE COUNTY ENGR. BEFORE WORK CAN BE STARTED, THE CONTRACTOR MUST OBTAIN A PERMIT TO EXCAVATE IN COUNTY STREETS FROM THE L.A. COUNTY ROAD DEPT., 211 SOUTH MAIN STREET, AND MAKE A CHECK WITH THE COUNTY ENGINEER, 828 L.A. COUNTY ENGINEERING BLDG., SUFFICIENT TO COVER THE COST OF CONSTRUCTION INSPECTION AND RECORD PLANS.
WORK IS TO BE DONE IN STATE HIGHWAY A PERMIT MUST BE OBTAINED FROM THE STATE OF CALIFORNIA, DIVISION OF HIGHWAYS, 124 SO. SPRING ST., AFTER MAKING DEPOSIT WITH THE COUNTY ENGINEER.
APPROVAL OF THIS PLAN BY THE COUNTY OF LOS ANGELES DOES NOT CONSTITUTE A REPRESENTATION AS TO THE ACCURACY OF THE LOCATION OF OR THE EXISTENCE OR NON-EXISTENCE OF ANY UNDERGROUND UTILITY. PRICES OF MATERIALS AND LABOR TO BE DETERMINED BY THE COUNTY ENGINEER.

COUNTY OF LOS ANGELES, CALIFORNIA
APPROVED **WILLIAM J. FOX** COUNTY ENGINEER
BY **William J. Kelly** CHIEF DEPUTY
APPROVED **A.M. RAWN** BY OFFICE ENGINEER
CHIEF ENGINEER OF COUNTY SANITATION DISTRICT NO. 2

REVISIONS:
REVISED: MANHOLE STA. 0+80.04 DEEPENED 11-28-51
REVISION APPROVED: **H. S. ...** 11-28-51
OFFICE OF COUNTY ENGINEER
REG. C.E. NO. 6472

checked 2-5-52

PC 1911

