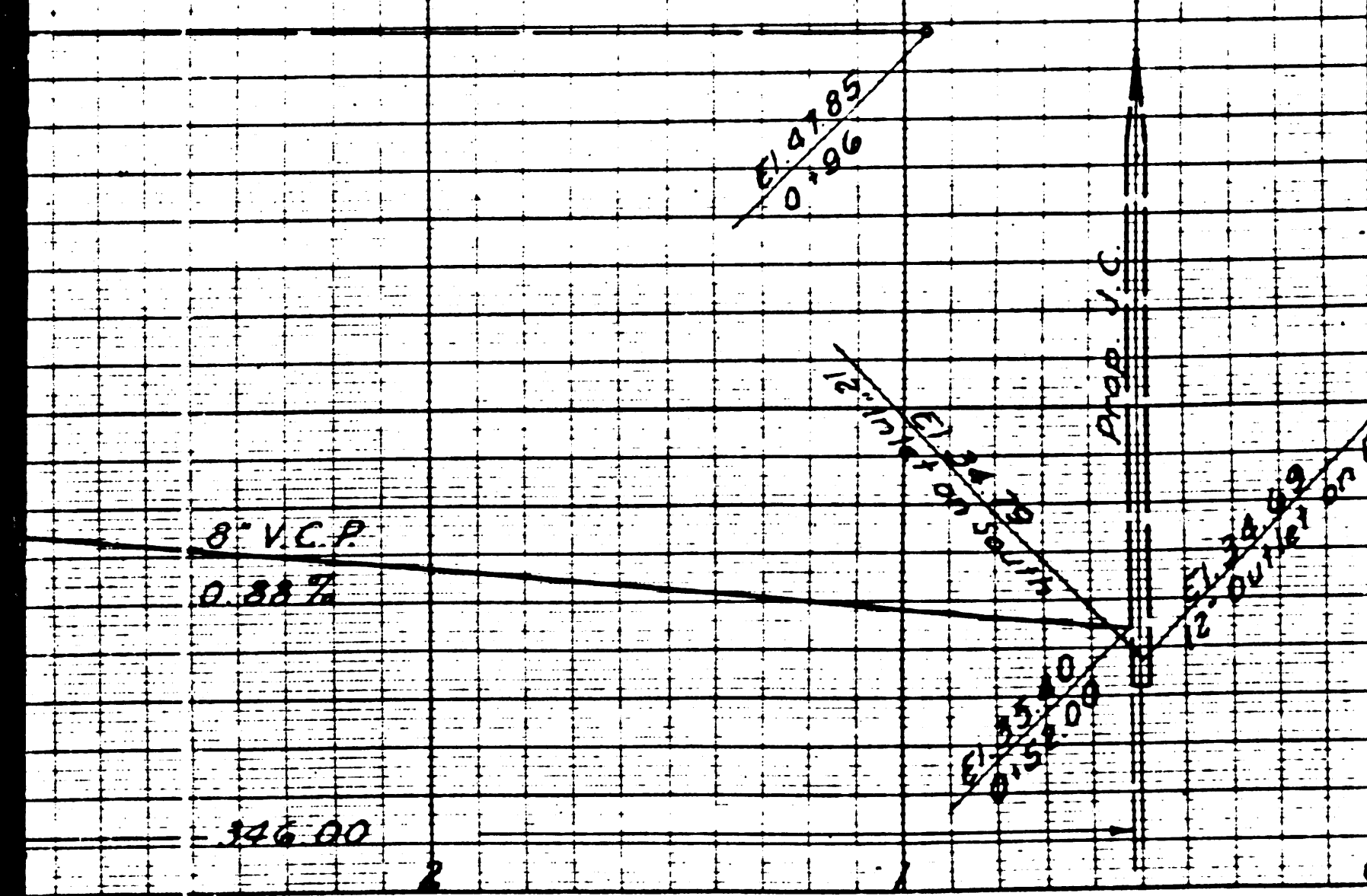


LENGTH PIPE IN MAIN LINE & HOUSE CONNECTIONS — 20.50 00

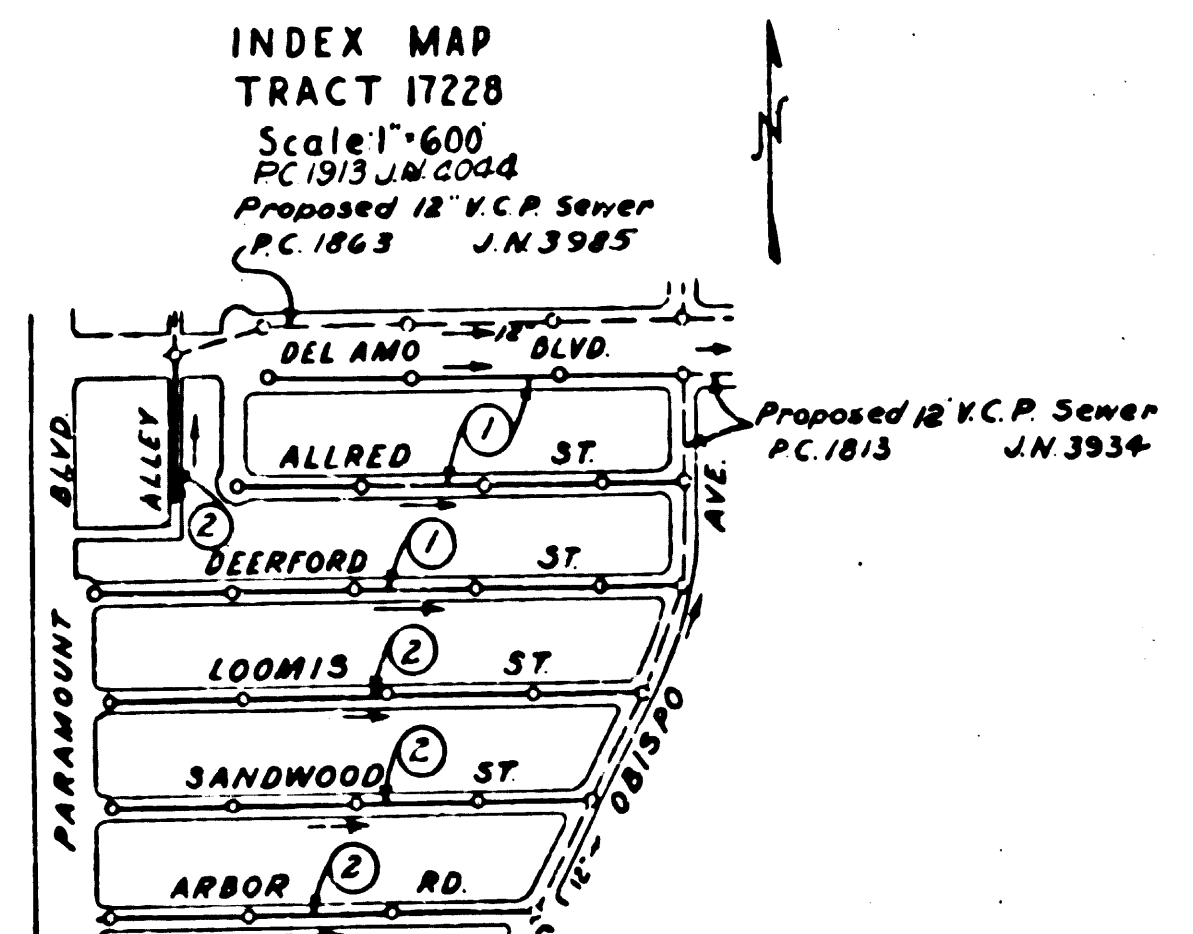
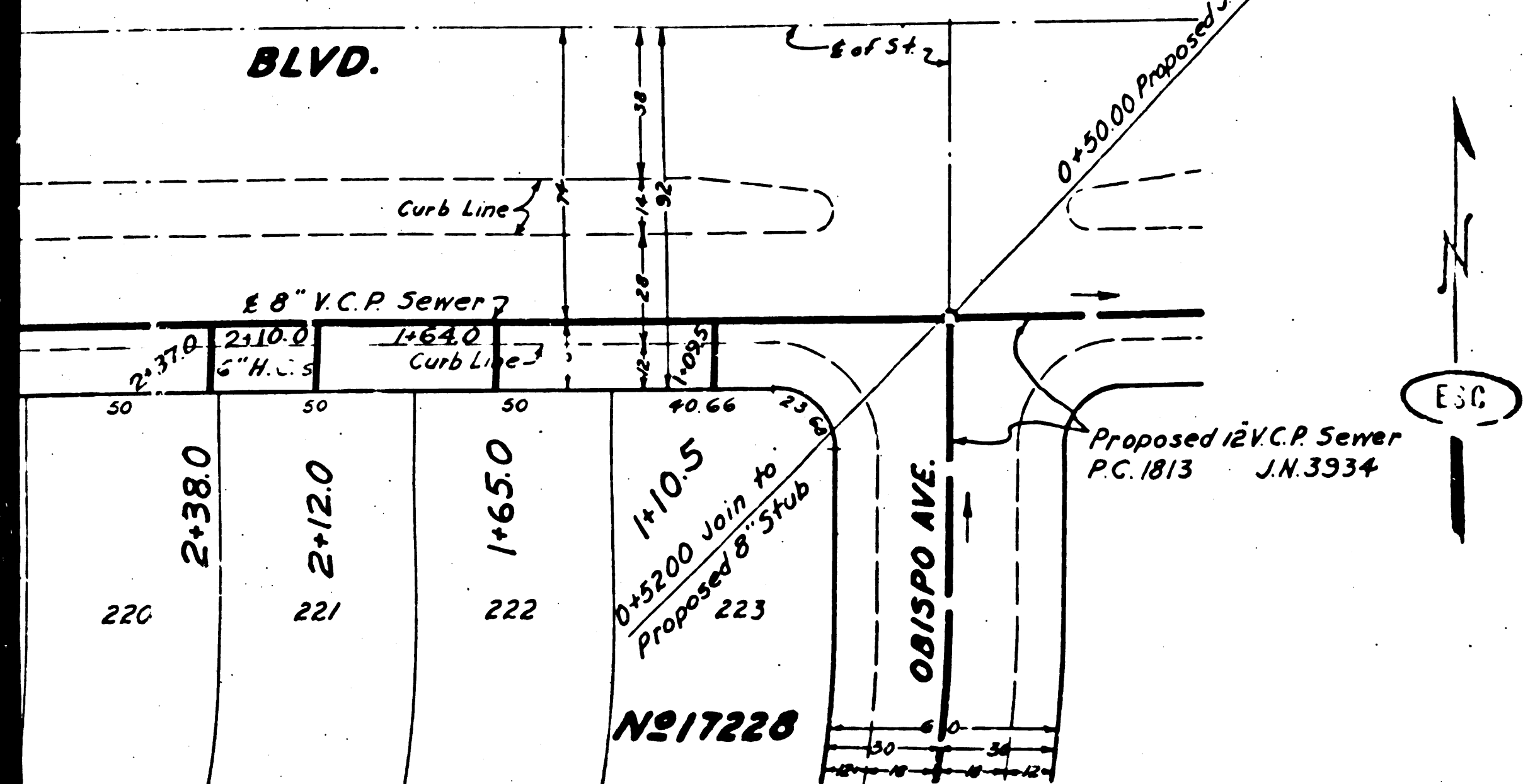


BELLFLOWER
 B.M. 51763-76 El. 55.223
 N.W. L & T STRADDLER NEAR INTERSECTIONS
 SOUTH ST & LAKEWOOD BLVD. (14.756)

- THE REPRESENTATIVE OF THE COUNTY ENGINEER WILL SURVEY OR
 MAY NOT ANY PORTION OF THE WORK.
 THE OWNER OR HIS AUTHORIZED REPRESENTATIVE SHALL FURNISH
 THE COUNTY ENGINEER WITH GRADE SHEETS AND STATIONS FOR
 ALL HOUSE CONNECTIONS AND YARD LINES AND SHALL FURNISH
 STAKES FOR THE LATERAL LINE PROPOSED LOCATIONS WITH SEASONING
 CLEARLY MARKED. ANY CHANGE OF LOCATION SHALL BE REQUESTED
 IN WRITING BY THE OWNER OR HIS REPRESENTATIVE.
 THE ENGINEER SHALL BE RESPONSIBLE IN THESE PLANS WITHOUT APPROVAL
 OF THE COUNTY ENGINEER.
1. USE STANDARD MANHOLE FRAMES AND COVERS, 5'-11".
 2. USE STANDARD STRENGTH PIPE EXCEPT AS NOTED.
 3. USE SLOPE INDICATED FOR ALL VERTICAL CURVE POINTS.
 4. RESURFACE ALL TRENCH WITHIN PAVED AREA TO MEET L.A. COUNTY ROAD DEPT. REQUIREMENTS IN ACCORDANCE WITH PERMIT.
 5. ENCASE FOUR FEET OF SEWER AT POINTS OF INTERFERENCE WITH POLES.
 6. HOUSE CONNECTIONS TO BE CONSTRUCTED WITH INVERT AT PROPERTY LINE 5 FEET BELOW CURB GRADE.
 7. ALL STRUCTURES SHALL BE BRICK SEWER STRUCTURES EXCEPT AS NOTED.
 8. PROVIDE STREET CURBS AT PROPERTY LINES OR PROPERTY LINES EXCEPT AT RIGHT ANGLES TO THE SEWER LINE AT THE CENTERLINE OF EACH MANHOLE.
 9. STOPWALLS TO BE INSTALLED WITH JOINT COMPOUND BY MANUFACTURER AT THE LATEST SPEC. SEC. 31.18.
 10. CONCRETE PAVEMENT TO BE CUT NOT LESS THAN 2" IN DEPTH WITH CONCRETE SAW SPACES 6'-6" ON CENTER.

PROFILE, ALIGNMENT AND GRADE OF
SANITARY SEWERS
 TO BE CONSTRUCTED IN
DEL AMO BLVD.
 BETWEEN OBISPO AVE AND ALLRED ST.
ALLRED ST.
 BETWEEN OBISPO AVE AND DEL AMO BLVD.
DEERFORD ST.
 BETWEEN OBISPO AVE AND PARAMOUNT BLVD.
TRACT 17228

PRIVATE CONTRACT NO. 1913
 W.S. 30
 SHEET 11 OF 2 SHEETS
 SEPT. 1951
 PREPARED IN THE OFFICES OF
ENGINEERING SERVICE CORPORATION



ENGINEERING SERVICE CORPORATION	
1127 W WASHINGTON BLVD.	
LOS ANGELES 15 CALIF PR 7281	
DESIGNED BY	C.M.K.
CHECKED BY	K.S.
SUBMITTED	
SUB STRUCTURES CHECKED	
W.O. NO.	DWG. NO.
DATE	SCALE
1951-128	1" = 4'
SEP. 1951	1" = 4'

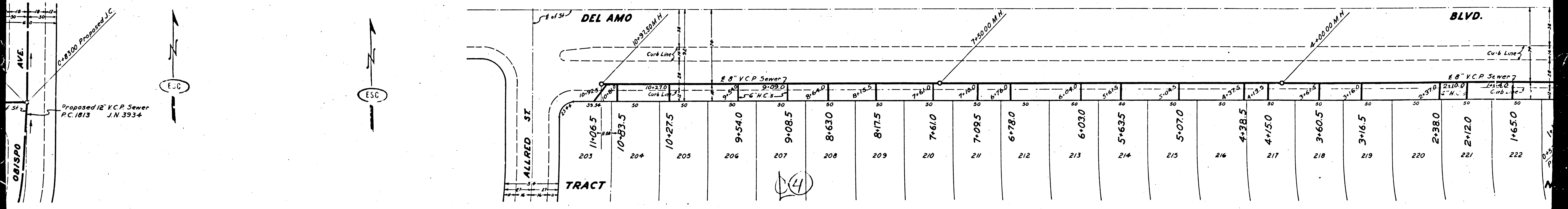
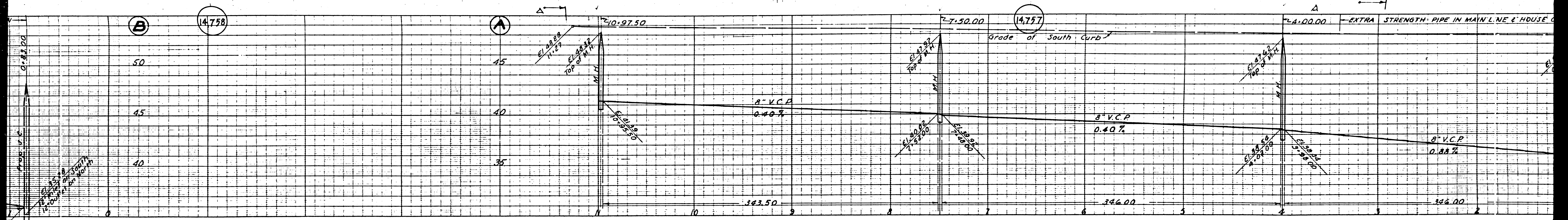
NOTE:
 GRADES TO WHICH THIS IMPROVEMENT IS TO BE CONSTRUCTED ARE SHOWN ON PLANS AND PROFILES.
 GRADE POINTS FOR TOP OF CURB, CENTER LINE OF STREETS, OR CENTER LINE OF ALLEY ARE SHOWN BY
 CIRCLES ON PROFILES. AT ALL POINTS BETWEEN DESIGNATED POINTS THE GRADE SHALL BE ESTABLISHED
 SO AS TO CONFORM TO A STRAIGHT LINE DRAWN BETWEEN SAID DESIGNATED POINTS.
 ELEVATIONS ARE IN FEET ABOVE U. S. G. S. DATUM OR MEAN SEA LEVEL.
 THIS DRAWING AND THE DATA HEREON ARE HEREBY MADE A PART OF THE SPECIFICATIONS.
 WORK SHALL BE CONSTRUCTED ACCORDING TO THE SPECIFICATIONS ON FILE IN THE OFFICE OF THE COUNTY
 ENGINEER AND SHALL BE PROSECUTED ONLY IN THE PRESENCE OF THE COUNTY ENGINEER.
 BEFORE WORK CAN BE STARTED THE CONTRACTOR MUST OBTAIN A PERMIT TO EXCAVATE IN COUNTY
 STREETS FROM THE L. A. COUNTY ROAD DEPT. 108 W SECOND ST. AND MAKE A DEPOSIT WITH THE COUNTY
 ENGINEER, 818 COUNTY ENGINEERING BUILDING SUFFICIENT TO COVER THE COST OF CONSTRUCTION INSPECTION AND RECORD PLANS.
 APPROVAL OF THIS PLAN BY THE COUNTY OF LOS ANGELES DOES NOT CONSTITUTE A REPRESENTATION
 AS TO THE ACCURACY OF THE LOCATION OF OR THE EXISTENCE OR NON-EXISTENCE OF ANY UNDERGROUND
 UTILITY, PIPE, OR STRUCTURE WITHIN THE LIMITS OF THIS PROJECT. THIS NOTE APPLIES TO ALL SHEETS.
 COUNTY OF LOS ANGELES, CALIFORNIA
 WILLIAM J. POT COUNTY ENGINEER

before breaking into any existing structure
 and before final acceptance of this work.
 County Sanitation District should be notified
 in order that required inspection may be made.

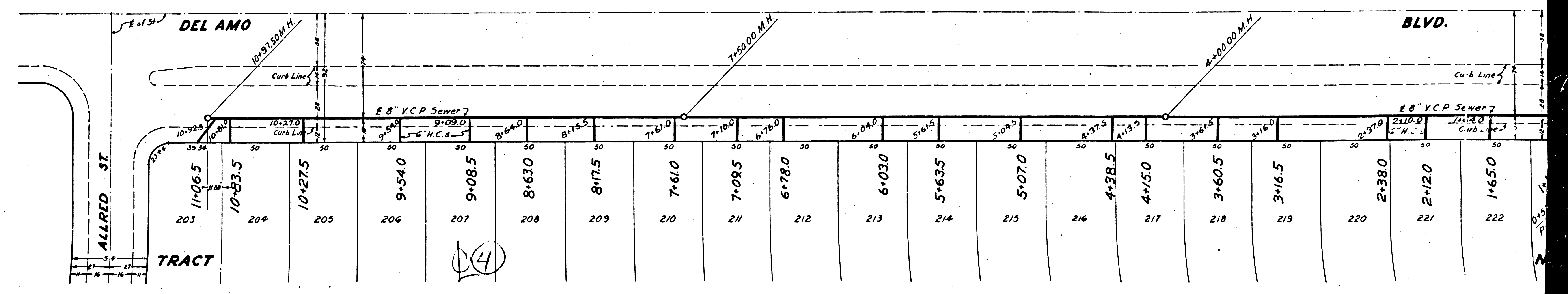
APPROVED BY: *Richard S. Kuhn*
 CHIEF DEPUTY COUNTY ENGINEER
 COUNTY OF LOS ANGELES
 SANITATION DISTRICT NO. 3
 10-11-51
 OFFICE OF COUNTY ENGINEER, BLDG. C. E. NO. 760

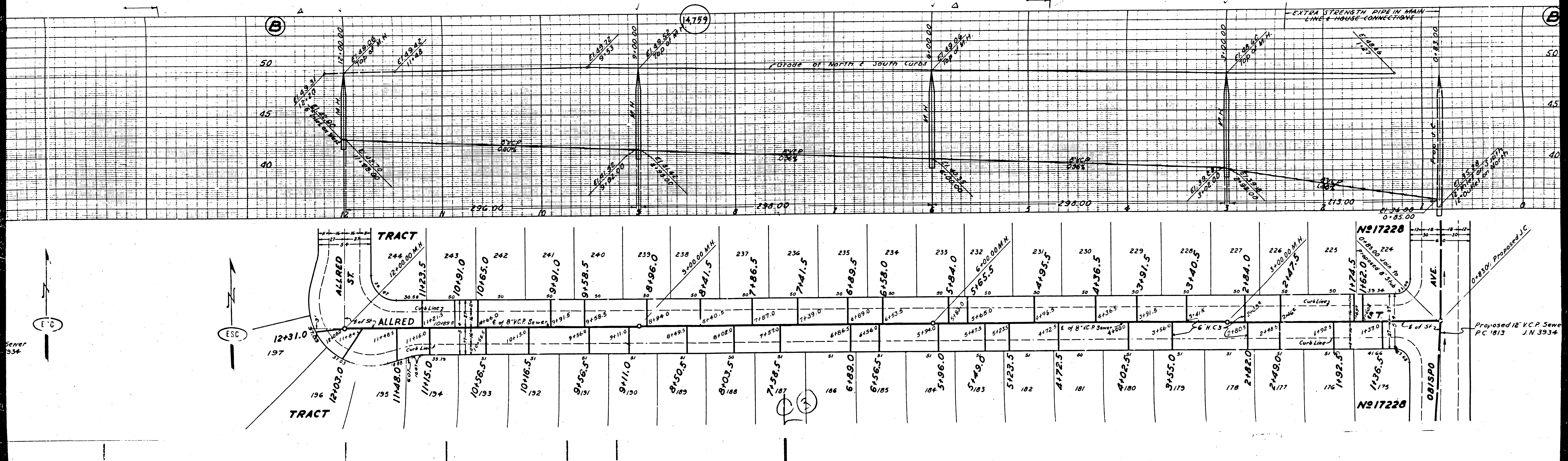
DEL AMO BLVD.
 ALLRED ST.
 DEERFORD ST.
 OBISPO AVE
 PARAMOUNT BLVD.
 TRACT 17228
 W.S. 30
 SHEET 11 OF 2 SHEETS
 SEPT. 1951
 PREPARED IN THE OFFICES OF
 ENGINEERING SERVICE CORPORATION

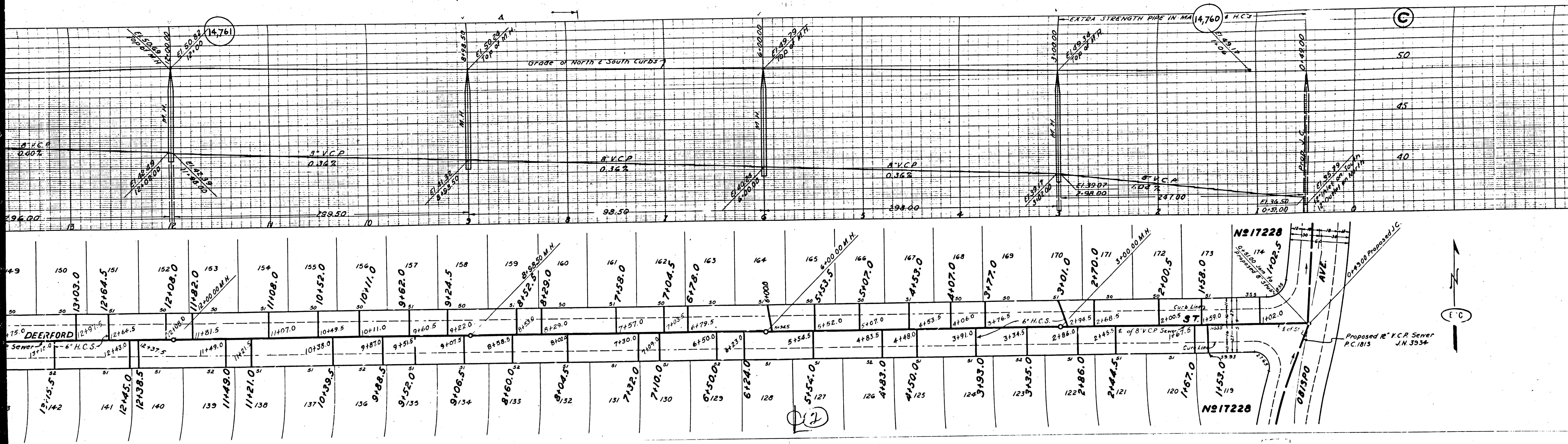
15



OBISPO AVE.
 Proposed 12" V.C.P. Sewer
 P.C. 1813 J.N. 3934







14,761

14,760

50

45

40

13142	13145.5	13145.0	13138.5	13143.0	13137.5	11149.0	11149.0	11149.0	11149.0	10138.0	9187.0	9187.0	9187.0	9187.0	8158.5	8158.5	8158.5	8158.5	7132.0	7132.0	7132.0	6150.0	6150.0	6150.0	5154.0	5154.0	4183.0	4183.0	4183.0	3193.0	3193.0	3193.0	2186.0	2186.0	2186.0	1167.0	1167.0	1167.0	1153.0	1153.0	1153.0	1102.5	1102.5	1102.5	1102.5																																																	
141	141	140	140	139	138	137	136	135	134	133	132	131	130	129	128	127	126	125	124	123	122	121	120	119	118	117	116	115	114	113	112	111	110	109	108	107	106	105	104	103	102	101	100	99	98	97	96	95	94	93	92	91	90	89	88	87	86	85	84	83	82	81	80	79	78	77	76	75	74	73	72	71	70	69	68	67	66	65	64	63	62	61	60	59	58	57	56	55	54	53	52	51	50	49



E.C.

N#17228

N#17228

Proposed 12" V.C.P. Sewer P.C. 1813 J.N. 3934

AVE.

081390

1402.5

1402.5

1402.5

1402.5

1402.5

1402.5

1402.5

1402.5

1402.5

1402.5

1402.5

1402.5

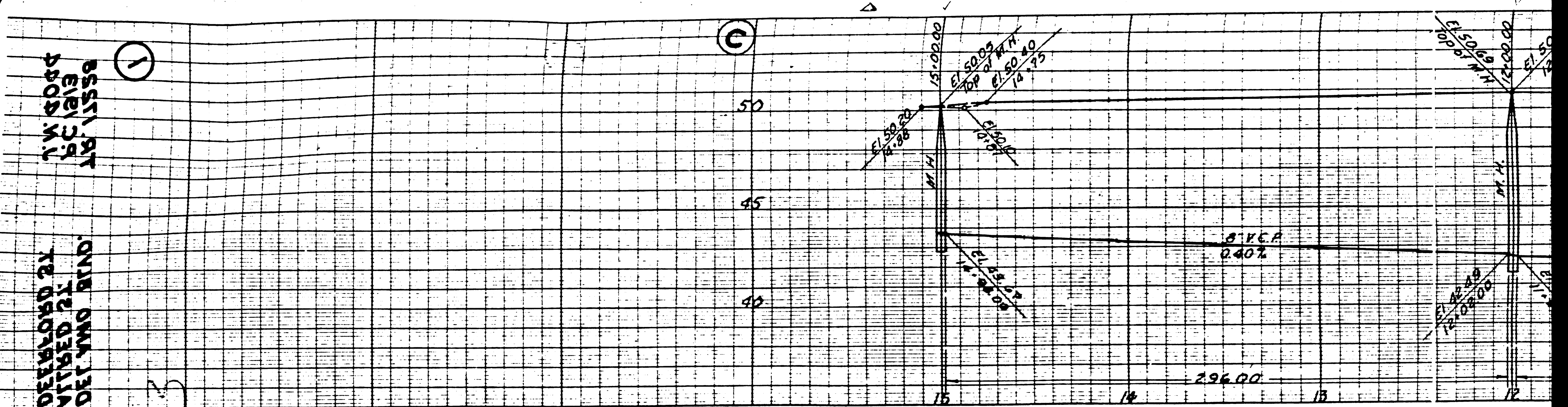
1402.5

1402.5

1402.5

85521.5 FT
EVERY 20 FT
3800.0 FT

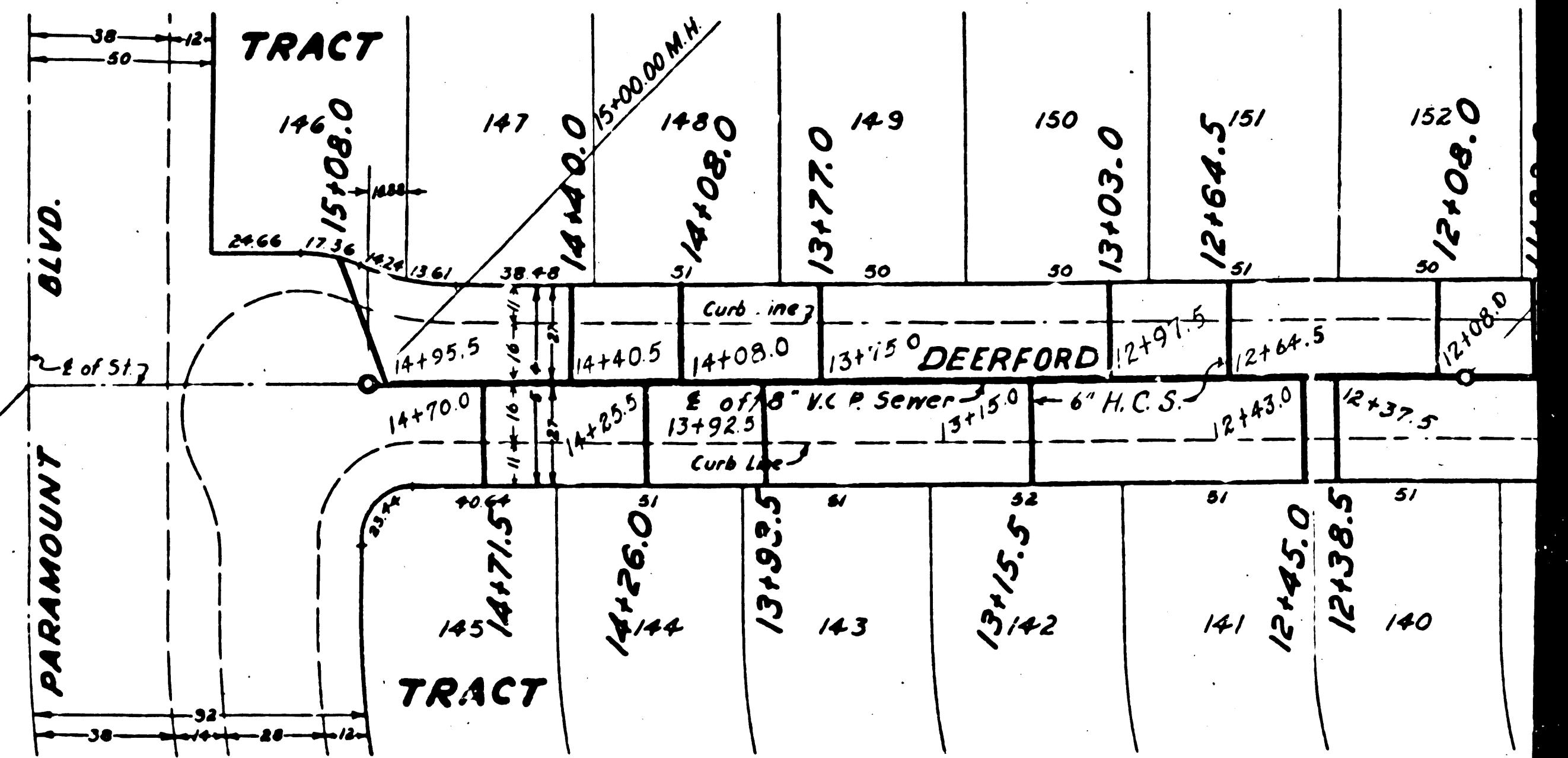
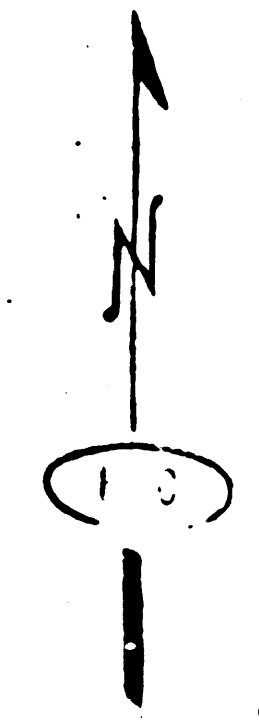
ONLY QUALIFIED
SURVEYORS TO
CONDUCT THIS

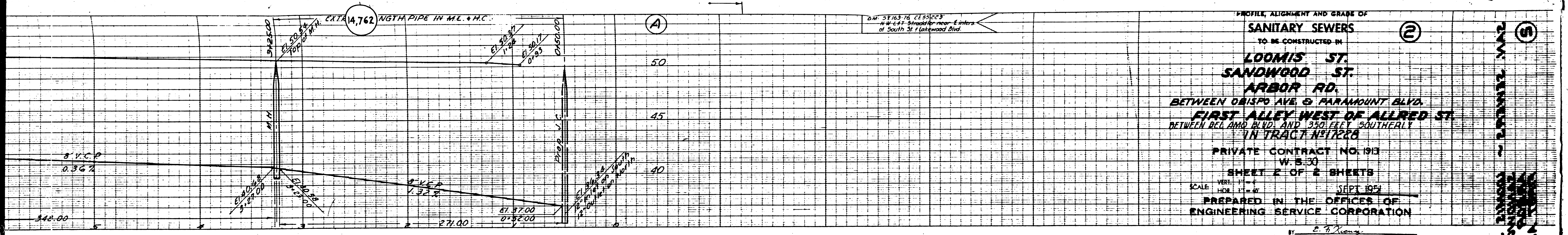


289628 MAR

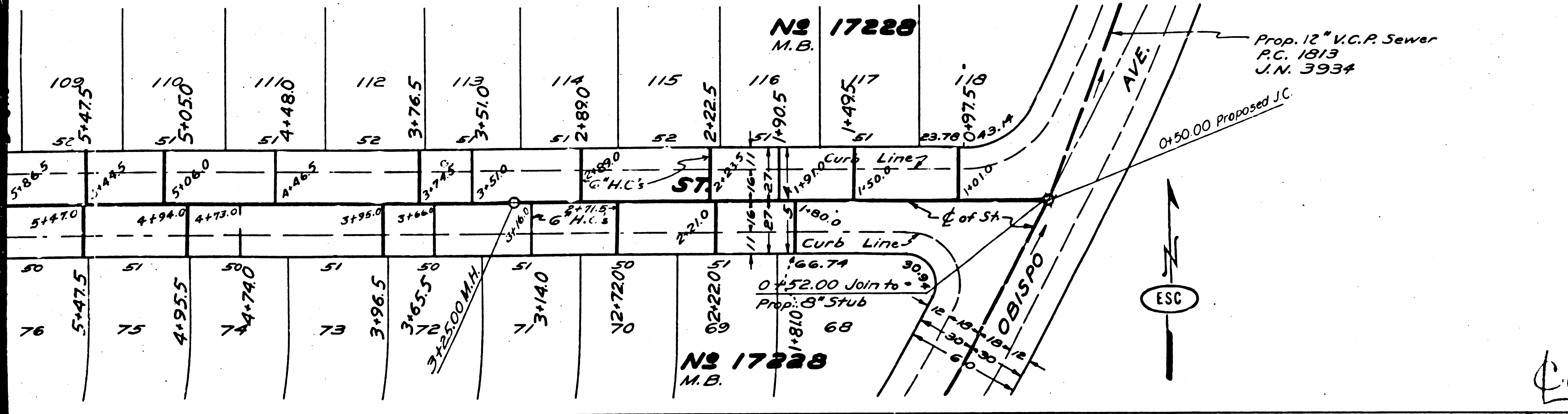
PC 1413

①





PROFILE, ALIGNMENT AND GRADE OF
SANITARY SEWERS
 TO BE CONSTRUCTED IN
LOOMIS ST.
SANDWOOD ST.
ARBOR RD.
 BETWEEN OBISPO AVE. & PARAMOUNT BLVD.
FIRST ALLEY WEST OF ALLRED ST.
 BETWEEN DEL AMO BLVD. AND 350 FEET SOUTHERLY
 IN TRACT N^o 17228
 PRIVATE CONTRACT NO. 1913
 W. 5.50
 SHEET 2 OF 2 SHEETS
 SCALE: VERT. 1" = 4'
 HORIZ. 1" = 40'
 PREPARED IN THE OFFICES OF
ENGINEERING SERVICE CORPORATION
 BY *E. H. Young*
 REG. C. & NO. 1913



ENGINEERING SERVICE CORPORATION
 1127 W. WASHINGTON BLVD.
 LOS ANGELES 15 CALIF. PR. 7381

REVISIONS			
NO.	DESCRIPTION	DATE	BY

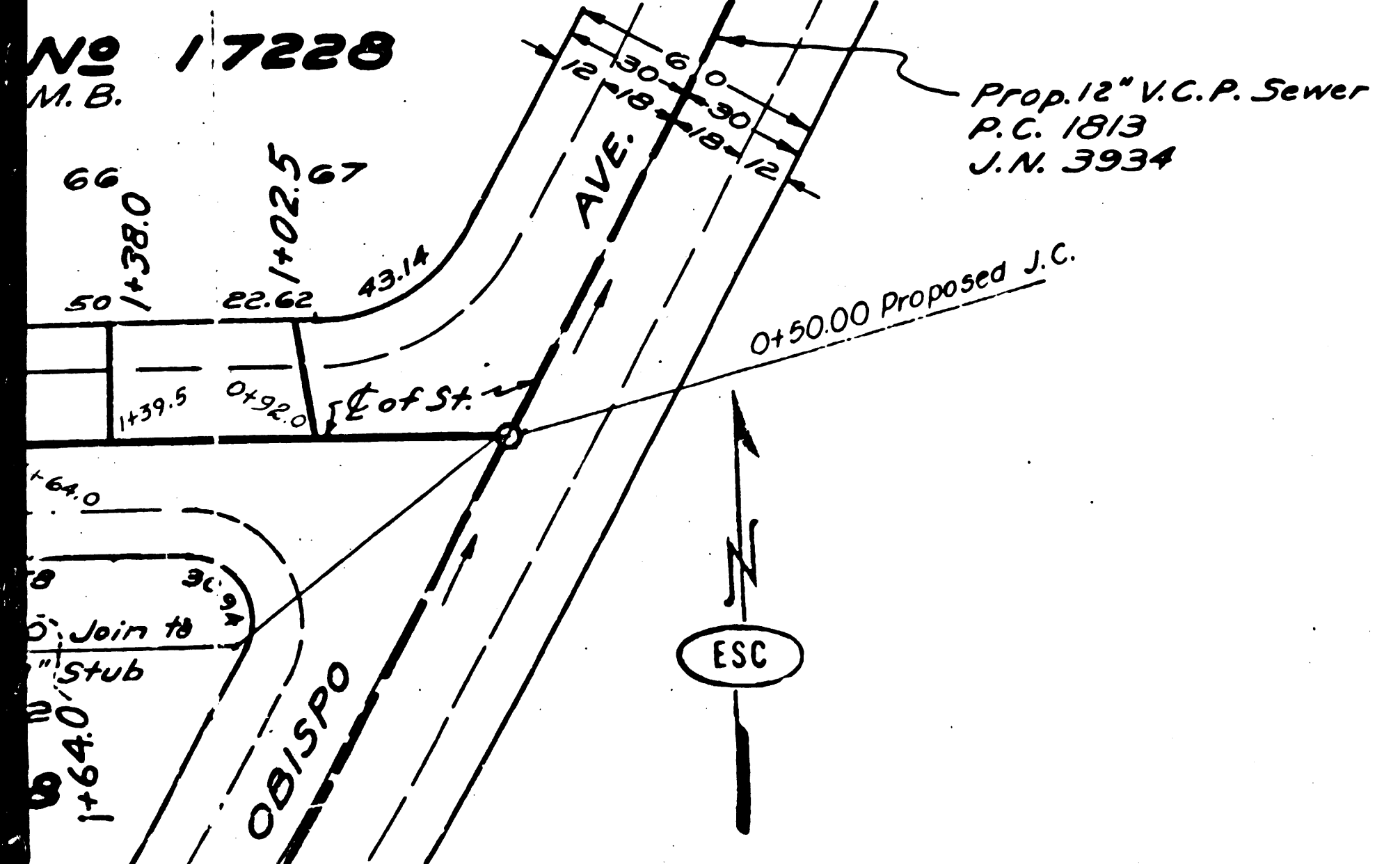
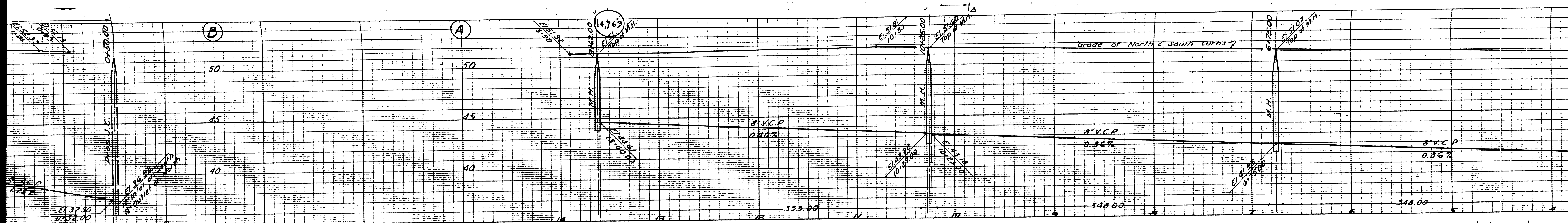
TRACED BY *H.S.*
 DESIGNED BY *H.S.*
 CHECKED BY
 SUBMITTED

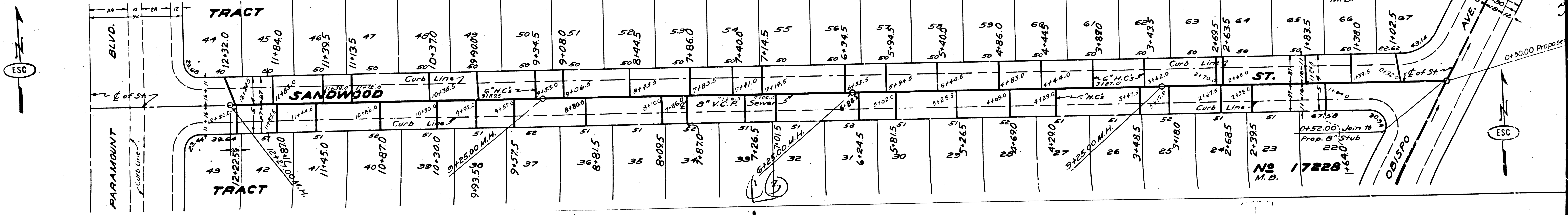
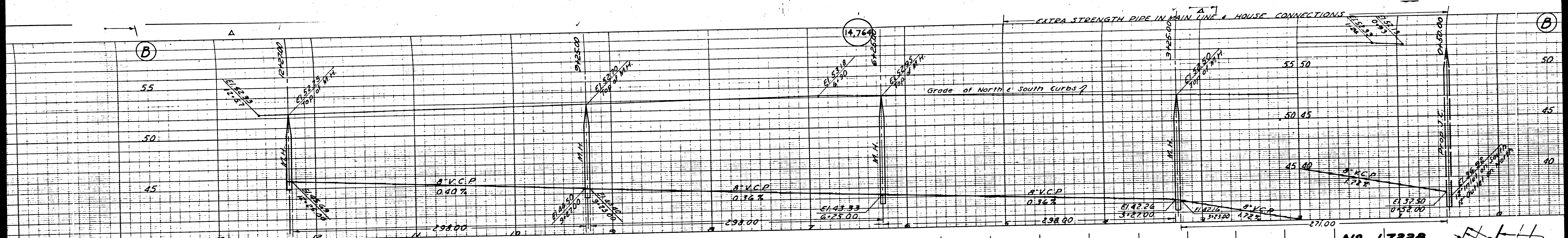
W. O. NO.	DWG. NO.	DATE	SCALE	L. S.	P. S.
5977-128		1951	VERT. 1" = 4' HORIZ. 1" = 40'		

FOR LEGEND
 SEE PLAN NO. 5-2-64
 BEFORE CONSTRUCTION NOTES SEE SHEET 1
 BEFORE breaking into any existing structure
 and before final acceptance of this work,
 County Sanitation District should be notified,
 in order that required inspection may be made.
 COUNTY OF LOS ANGELES, CALIFORNIA
 APPROVED BY *William J. Fox* COUNTY ENGINEER
 CHECKED BY *A. H. Young* OFFICE ENGINEER
 CHECKED BY *Richard E. Ruten* OFFICE ENGINEER
 OFFICE OF COUNTY ENGINEER, 400 C. & NO. 7460

ALLRED ST. NEAL OF ALLRED ST.
 12" V.C.P. SEWER
 1951
 12" V.C.P. SEWER
 1951
 12" V.C.P. SEWER
 1951

(5)





No 17228
M.B.
No 17229
M.B.
No 17228
M.B.
No 17228
M.B.

ESC

ESC

EXTRA STRENGTH PIPE IN MAIN LINE & HOUSE CONNECTIONS

Grade of North & South Curbs?

8" V.C.P.
0.40%

8" V.C.P.
0.36%

8" V.C.P.
0.36%

8" V.C.P.
1.22%

TRACT

SANDWOOD

TRACT

ST.

PARAMOUNT
BLVD.

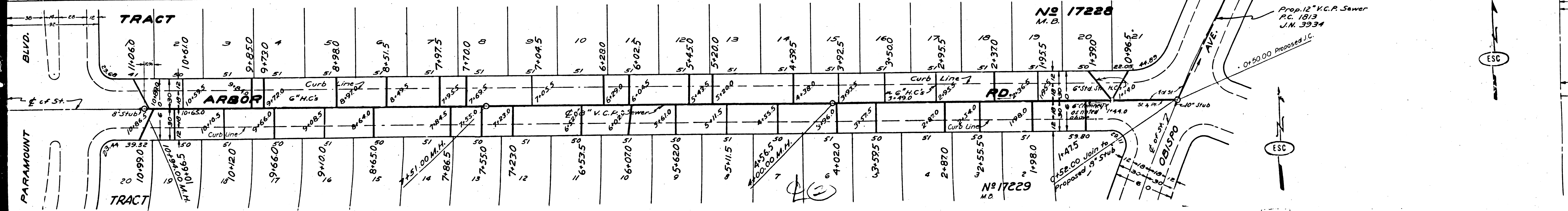
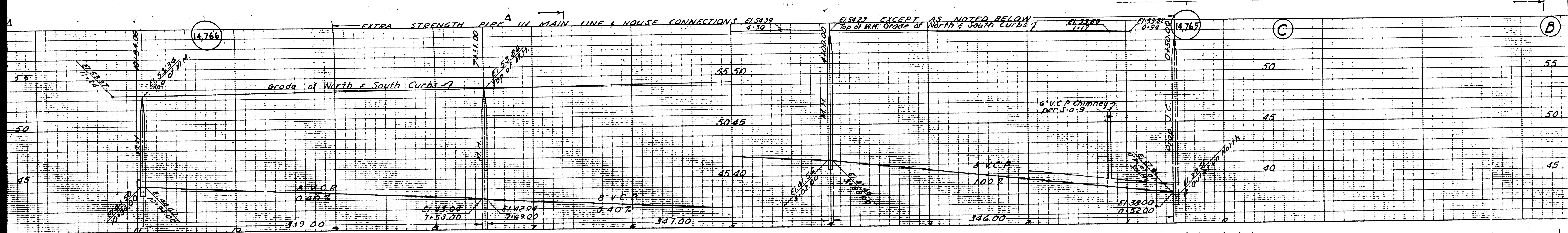
AVE.

0+50.00 Proposed

0+52.00 Join to Prop. B Stub

22' Stub

1+64.00



APPROVED FOR RECORD BY THE BOARD OF SUPERVISORS OF THE COUNTY OF ALameda, CALIFORNIA, ON 12/17/63.
DESIGNED BY

PC 1913

RECORDED 1913 MAR 1964

