

BELFLOWER

BM - SY. # 962 EL. 79.58 Pg. 376
 L.T. Near S. edge of North Strip Cong.
 Driveway set East of Woodruff
 to House # 15304

BM - D-36 EL. 74.18 L.B. 312
 Woodruff Ave. & Centre St. L.T.
 at Int. of Center Lines
 Seaboard Eng. Co. EL. 74.65 - 0.32 lower

(1) Use Standard Mankole Fibres & Cover S-117
 (2) Use Standard Strength Pipe (except as Noted)
 (3) Use Cement Mortar for all vitrified Clay Pipe Joints
 (4) Resurface all french within paved area to road
 Los Angeles County Road Department or California State
 Highway Requirements
 (5) All structures shall be brick Sewer Structures S-2-104
 (6) Encase 4' of sewer at points of interference with poles as per S-2-119
 (7) Slope of structures shall be with joint compound by manufacturer at his
 plant
 (8) Concrete pavement to be cut not less than 2" in depth with concrete
 top spaced 3/8" on 1/2" steel
 (9) Concrete House Connection with invert at Property Line (3 feet below curb Grade (except as noted)
 NOTE:
 No representative of the County Engineer will survey or layout
 any portion of the work
 The owner or his authorized representative shall furnish the County Engineer
 with grade sheets and stations of all House Connections and Y Branches and shall
 provide stakes and lines at these points locations with stations plainly marked. Any
 change of location shall be requested in writing by the owner or his representative.
 No revisions shall be made by these plans without approval of the County Engineer.
 Note:
 Provide stakes on the property lines or property lines produced at right angles to the
 sewer line at the center line of each manhole.

**PROFILE, ALIGNMENT AND GRADE OF
 SANITARY SEWERS
 TO BE CONSTRUCTED IN
 Mc NAB AVENUE
 BETWEEN CENTER ST. AND MAPLEDALE ST.
 CENTER STREET
 BETWEEN WOODRUFF AVE. AND Mc NAB AVENUE**

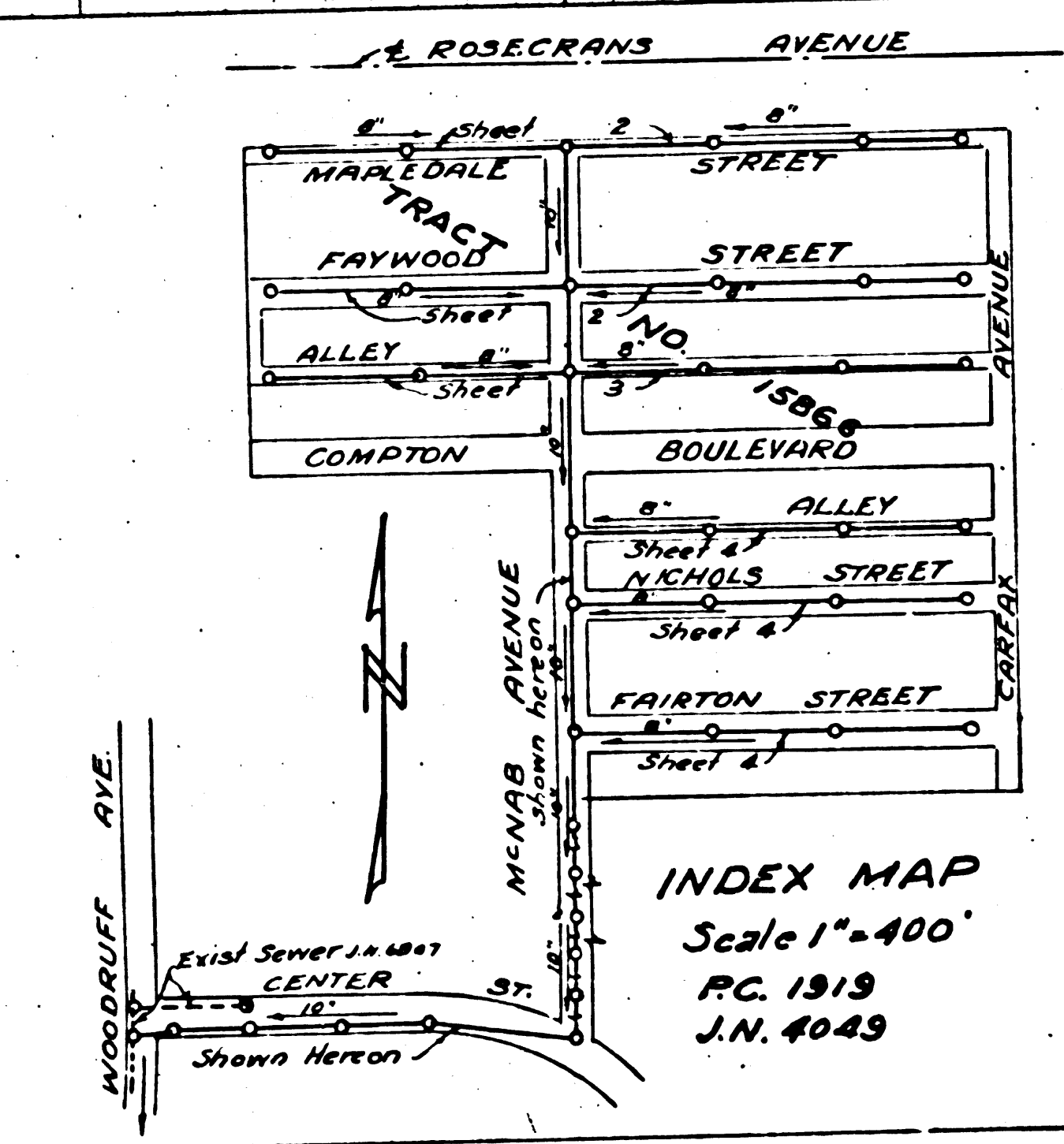
IN TRACT NO. 15866
 PRIVATE CONTRACT NO. 1919
 W.S. 33
 SHEET 1 OF 4 SHEETS
 SCALE: HOR. 1"=40'
 VERT. 1"=4'
 JUNE, 1951

Before breaking into any existing structure
 and before first acceptance of this work,
 County Sanitation District should be notified
 in order that required inspection may be made.

PREPARED IN THE OFFICE OF
 SEABOARD ENGINEERING CO.
 Mark A. Robin
 REG. C.E. NO. 2059

FOR LEGEND
 See Plan No. S-a-64

NOTE:
 Grades to which this improvement is to be constructed are shown on Plans and Profile.
 Grade points for top of curb, center line of street or center line of alley are shown by circles
 on profiles at all points between designated points the grade shall be established so as to
 conform to a straight line drawn between said designated points.
 Elevations are in feet above U.S. datum or mean Sea Level.
 This drawing and the data hereon are hereby made a part of the specifications.
 Work shall be constructed according to specifications on file in the office of the
 County Engineer and shall be executed only in the presence of the County Engineer.
 Before work can be started the contractor must obtain a permit in accordance with
 County streets from the L.A. County Road Department, 108 W. 2nd St. and make a
 deposit with the County Engineer, 224 1/2 County Engineering Bldg. sufficient to
 cover the cost of construction inspection and record plans constitute a
 approval of this plan by the County of Los Angeles does not constitute a
 representation as to the safety of the location of or the existence or non existence
 of any underground utility pipe or structure within the limits of this project.



REVISION CHECKED: *Richard S. Rubin* 1-4-53
 OFFICE OF COUNTY ENGINEER
 REG. C.E. NO. 7860

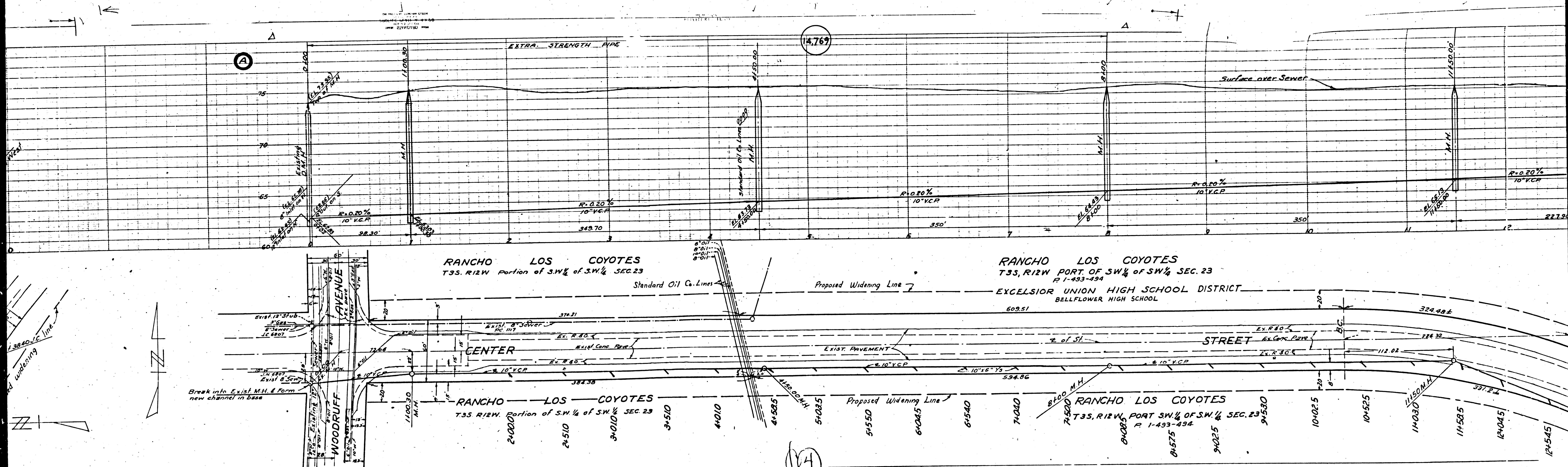
COUNTY OF LOS ANGELES, CALIFORNIA.

APPROVED: *William J. Fox* County Eng. APPROVED BY: *AM RAWN* Office Eng.
 Chief Engineer of County
 Sanitation District No. 2

BY: *Mark A. Robin*
 Chief Deputy

CHECKED BY: *Richard S. Rubin* 6-27-51
 Office of County Engineer Reg. C.E. No. 7860

SHEET 1 OF 4 SHEETS
 Mc NAB AVE. - CENTER ST.
 PG. 1919
 J.N. 4043



(A)

(14.76)

(14)

RANCHO LOS COYOTES
T3S, R12W, Portion of SW 1/4 of SW 1/4 SEC. 23

RANCHO LOS COYOTES
T3S, R12W, PORT. OF SW 1/4 of SW 1/4 SEC. 23
R 1-493-494

EXCELSIOR UNION HIGH SCHOOL DISTRICT
BELLFLOWER HIGH SCHOOL

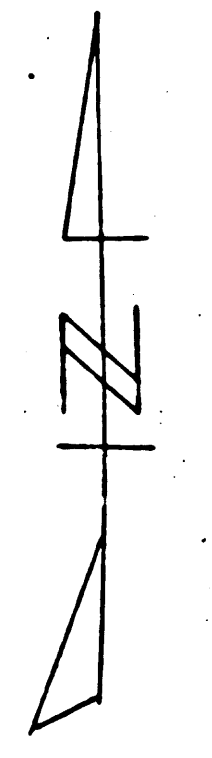
RANCHO LOS COYOTES
T3S, R12W, Portion of SW 1/4 of SW 1/4 SEC. 23

RANCHO LOS COYOTES
T3S, R12W, PORT SW 1/4 of SW 1/4 SEC. 23
R 1-493-494

Break into Exist. M.H. & Form new channel in base

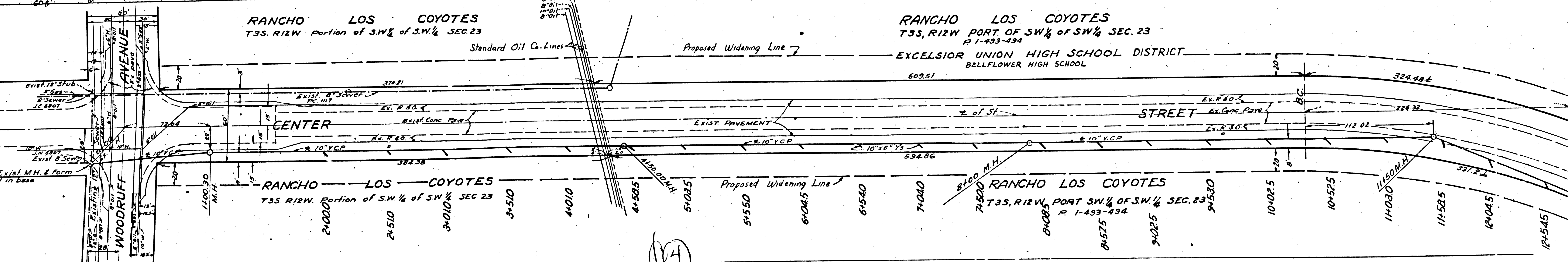
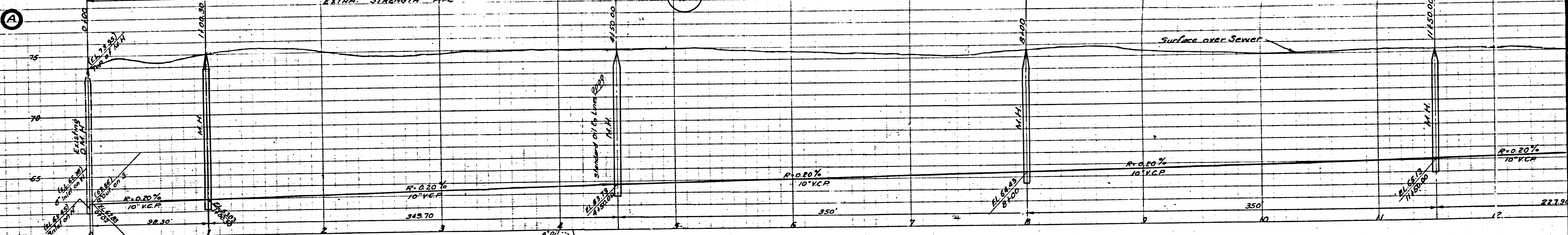
38.40 V.C. Line

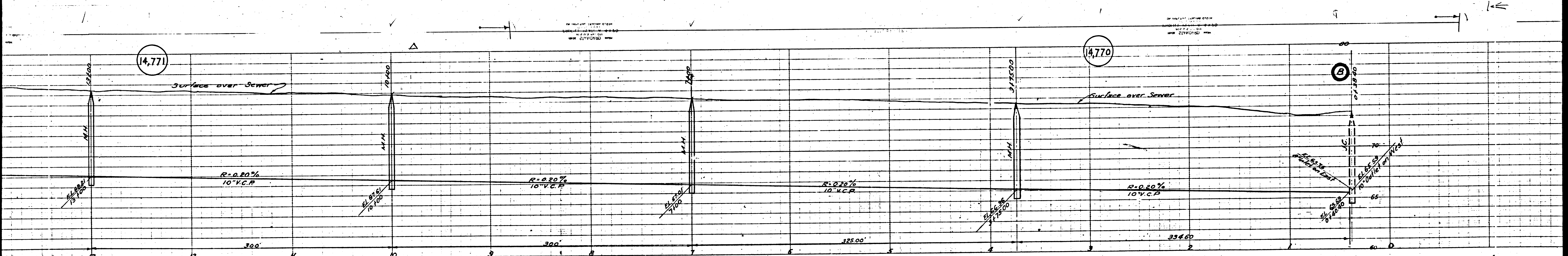
Widening



A

A

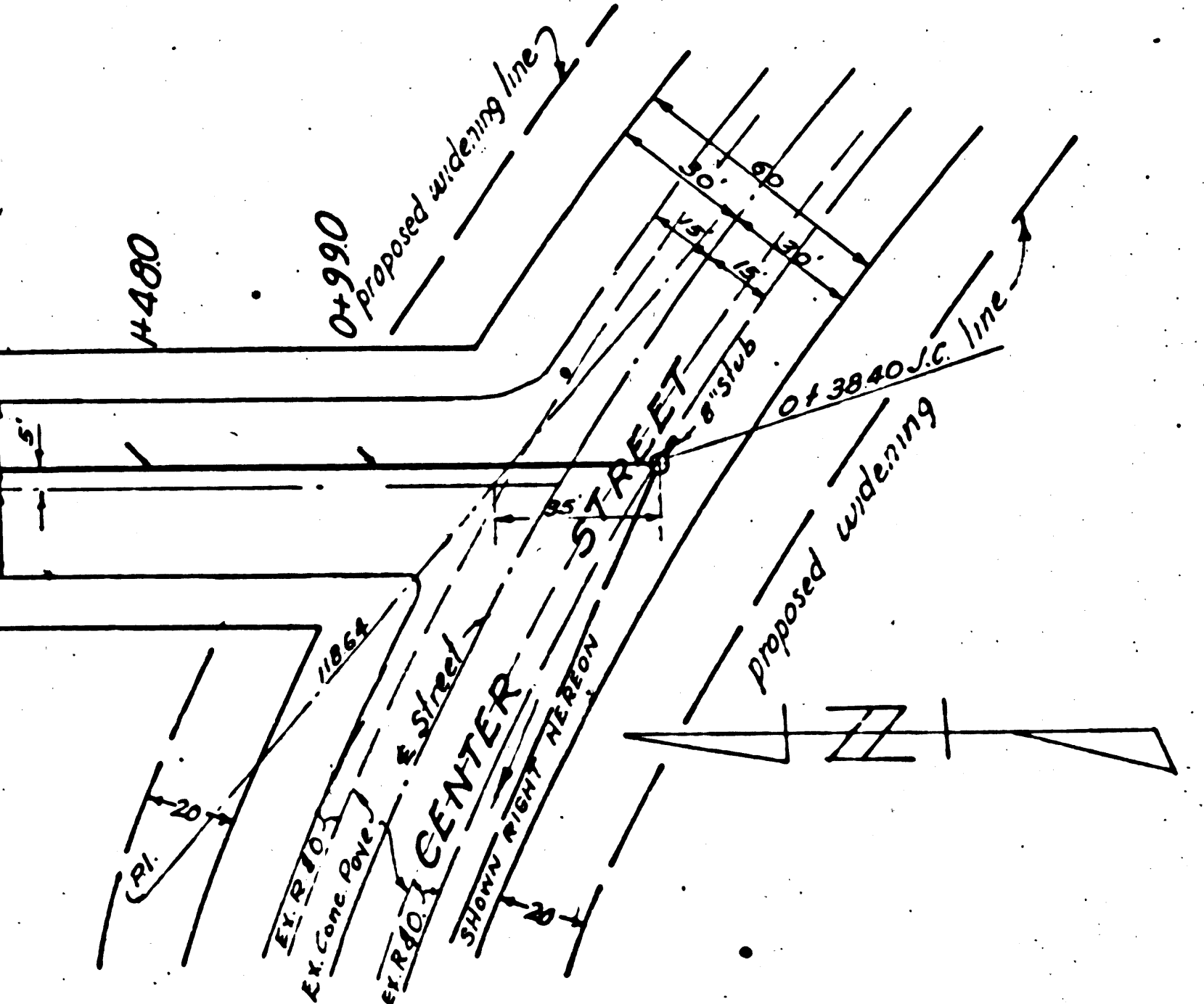




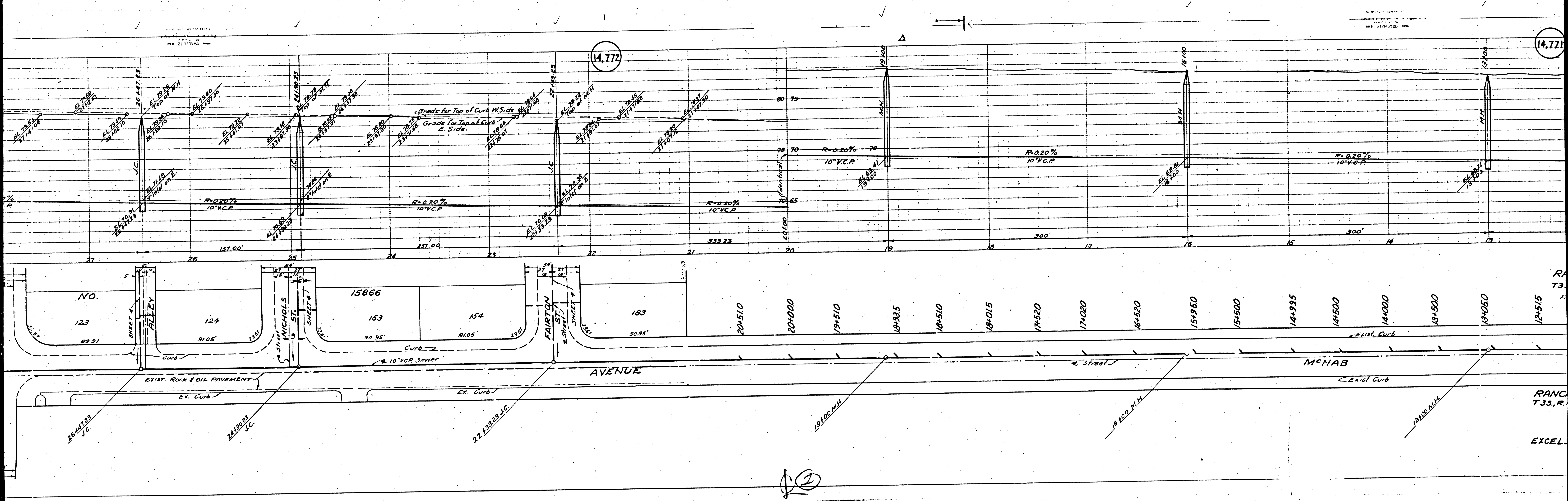
RANCHO LOS COYOTES
 T3S, R.12W. PORT OF SE ¼ OF SW ¼ SEC.23
 P 1-493-494

RANCHO LOS COYOTES
 T3S, R.12W. PORT OF SW ¼ OF SW ¼ SEC.23
 P 1-493-494

EXCELSIOR UNION HIGH SCHOOL DISTRICT
 BELLFLOWER HIGH SCHOOL



3



14,772

14,772

RA
T33

RANC
T33, R.

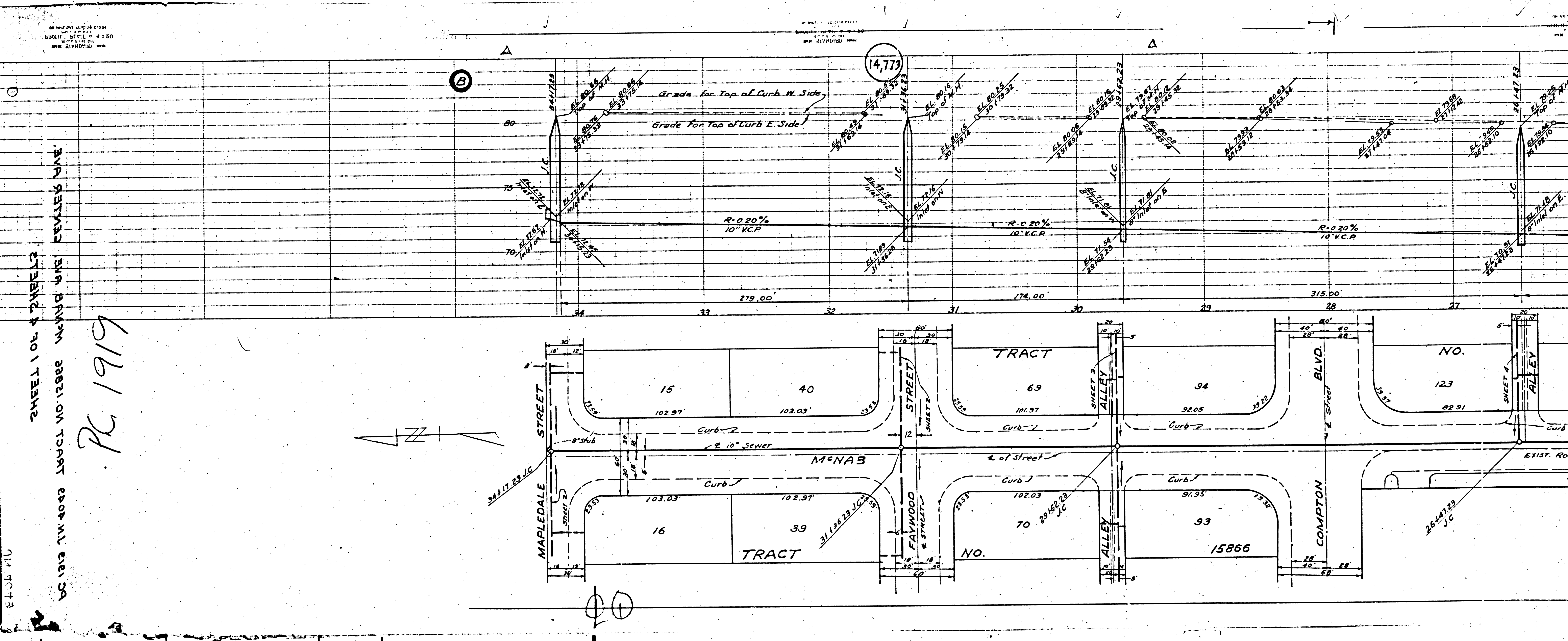
EXCEL

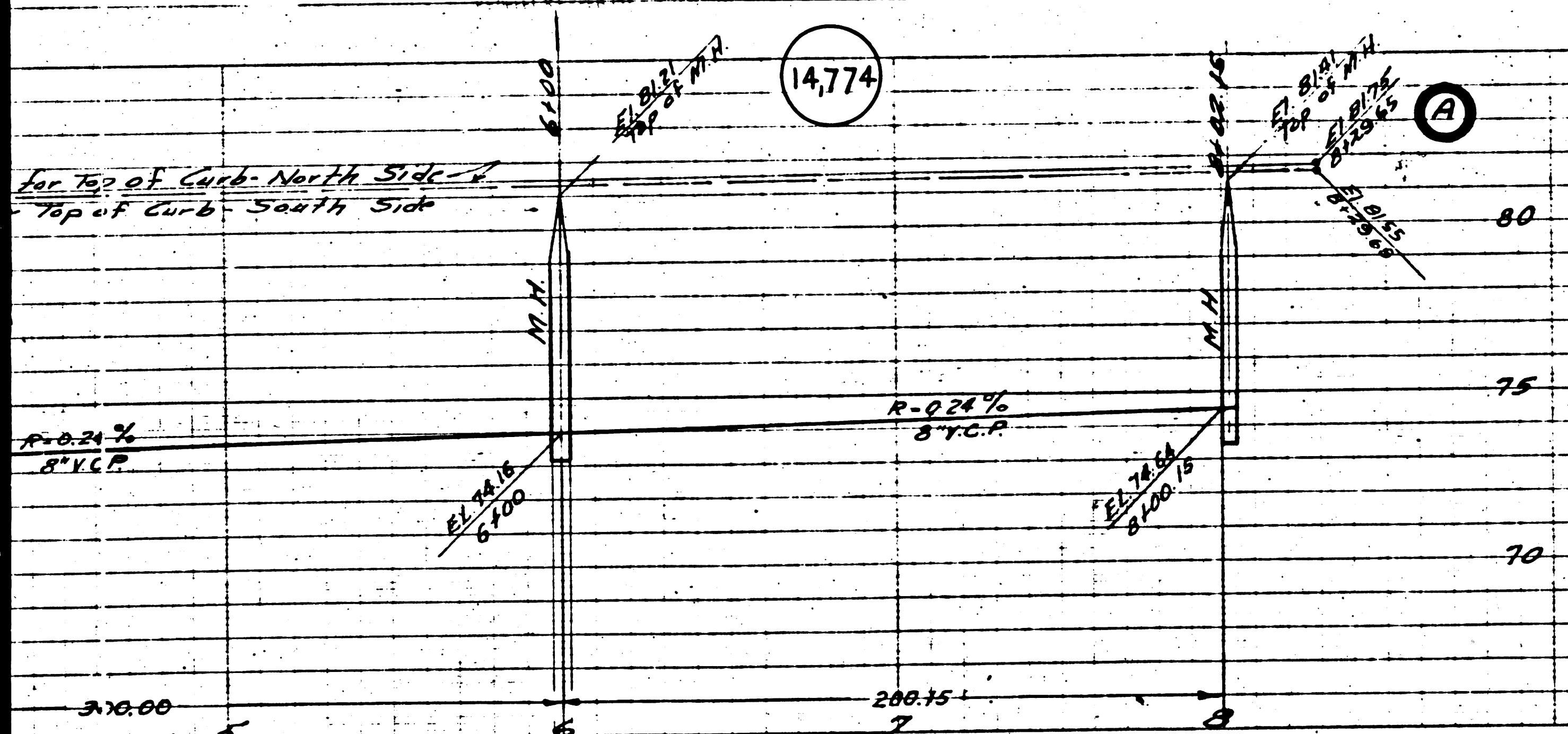
SHEET 1 OF 4 SHEETS

DC 1813 TW 4033 18951 NO 12888

WANDA WIFE FEMALE ONE

PC 1919





FOR CONSTRUCTION NOTES
SEE SHEET 1

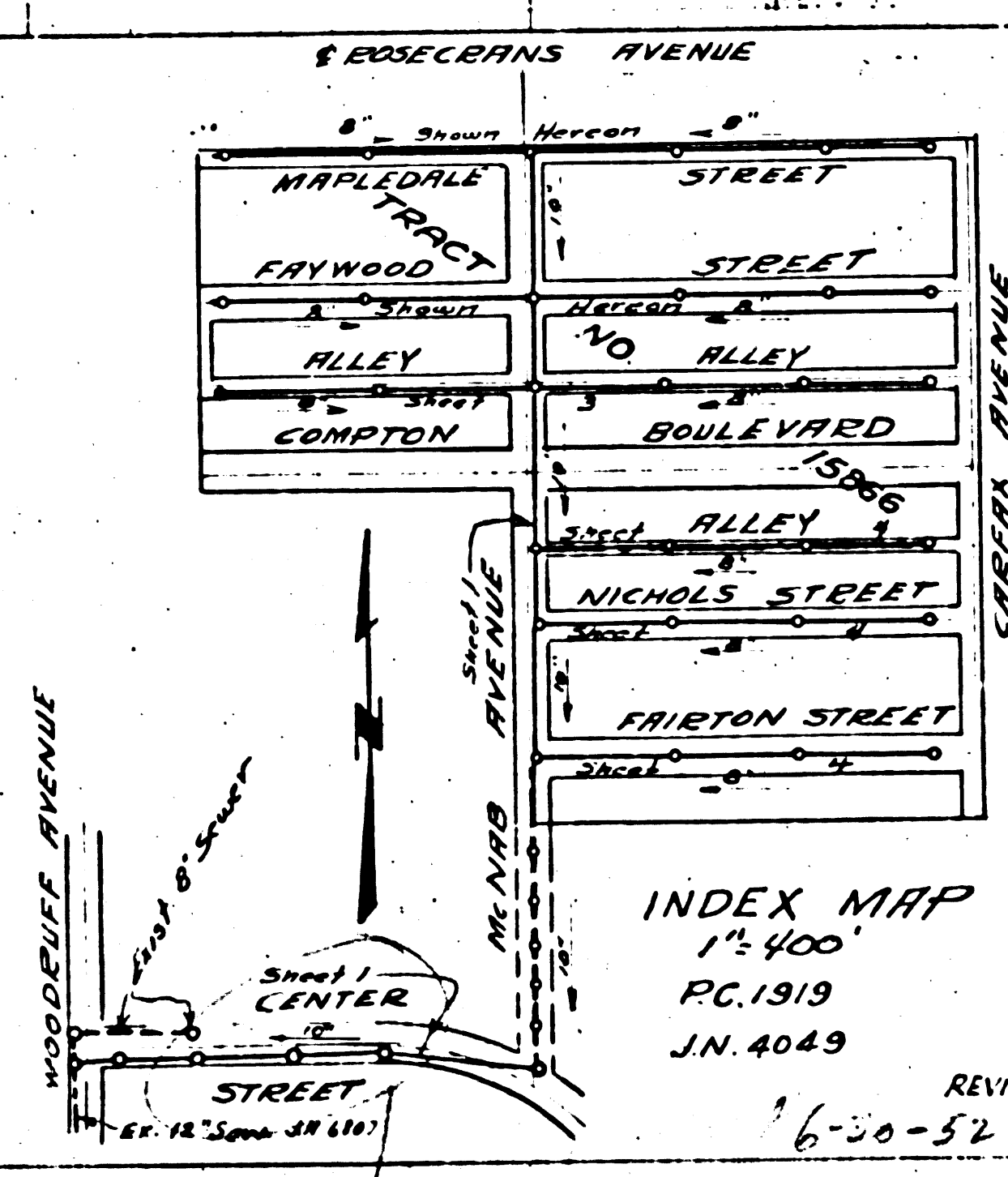
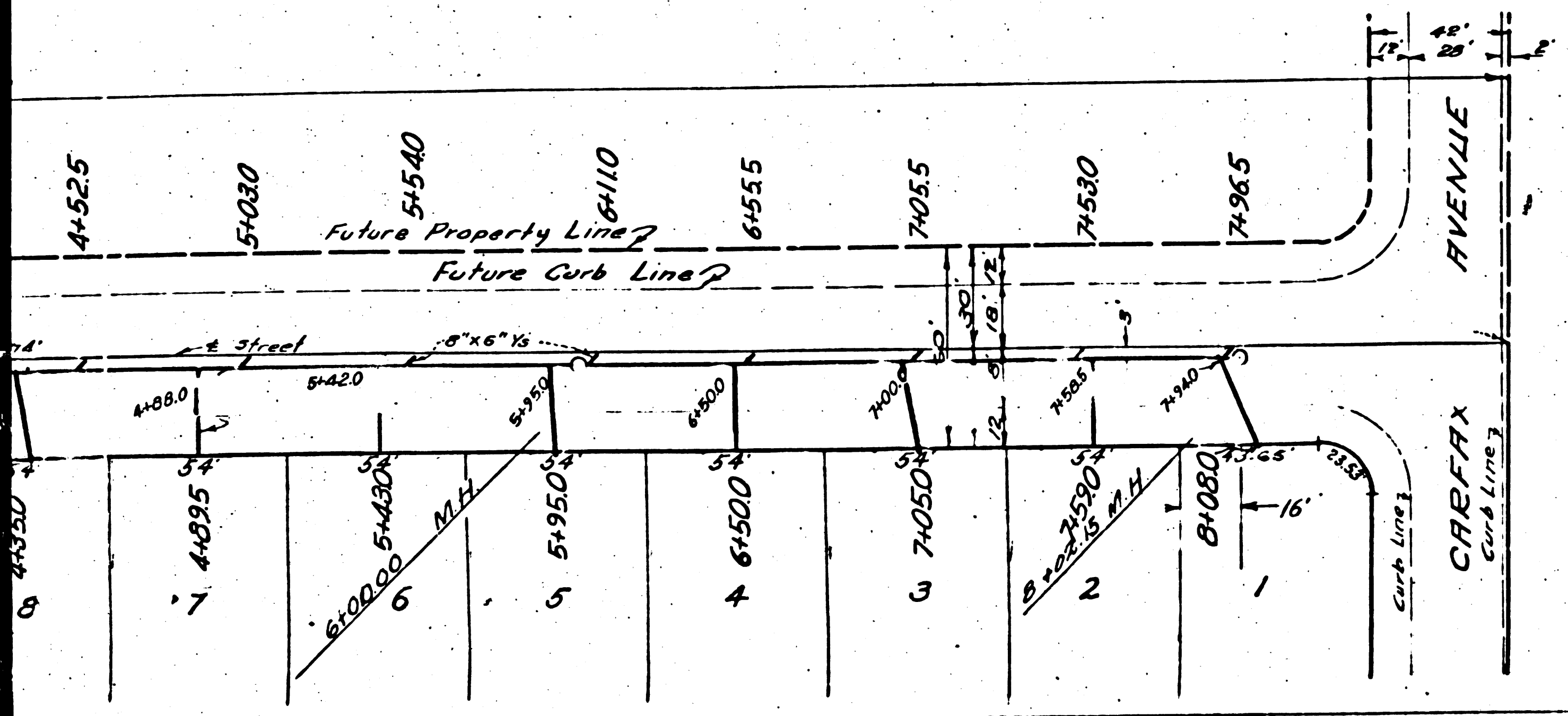
PROFILE, ALIGNMENT AND GRADE OF
SANITARY SEWERS
TO BE CONSTRUCTED IN
MAPLEDALE STREET
BETWEEN CAREFX AVENUE AND WESTERLY LINE TRACT NO. 15866
FAYWOOD STREET
BETWEEN CAREFX AVENUE AND WESTERLY LINE TRACT NO. 15866

IN TRACT NO. 15866
PRIVATE CONTRACT NO. 1919
W.S. 33
SHEET 2 OF 4 SHEETS

SCALE: HORIZ. 1"=50'
VERT. 1"=4'
JUNE, 1951
PREPARED IN THE OFFICES OF
SEABOARD ENGINEERING CO.
WILMINGTON, DELAWARE
MARK H. ROBIN - REG. C.E. NO. 2059

Before breaking into any existing structure
and before final acceptance of this work,
County Sanitation District should be notified
in order that required inspection may be made.

FOR LEGEND
See Plan No. S-a-64



INDEX MAP
1"=400'
PG. 1919
J.N. 4049

NOTE:
Grades to which this improvement is to be constructed are shown on Plans and Profile. Grade points for the top of curb, center line of street or center line of alley are shown by circles on profiles. At all points between designated points the grade shall be established so as to conform to a straight line drawn between said designated points.
Elevations are in feet above U.S.S. Datum or Mean Sea Level, the Specifications.
This drawing and the data hereon are hereby made a part of the Specifications.
The Engineer and shall be executed only in the presence of the County Engineer.
Work shall be constructed according to the specifications on file in the office of the County Engineer and shall be inspected and approved by the County Engineer.
All work can be started only after the contractor has obtained a permit to alter in the County Streets from the City Engineer, 600 W. 2nd Street, Los Angeles, California.
Approval of this plan by the County of Los Angeles does not constitute a representation as to the accuracy of the location or the existence or non-existence of any underground utility, pipe or structure within the limits of this project.

COUNTY OF LOS ANGELES, CALIFORNIA
APPROVED: WILLIAM J. FOX, County Eng. APPROVED: [Signature] OFFICE ENGR.
CHIEF ENGINEER OF COUNTY SANITATION DISTRICT No. 2

BY: [Signature] CHIEF DESIGNER

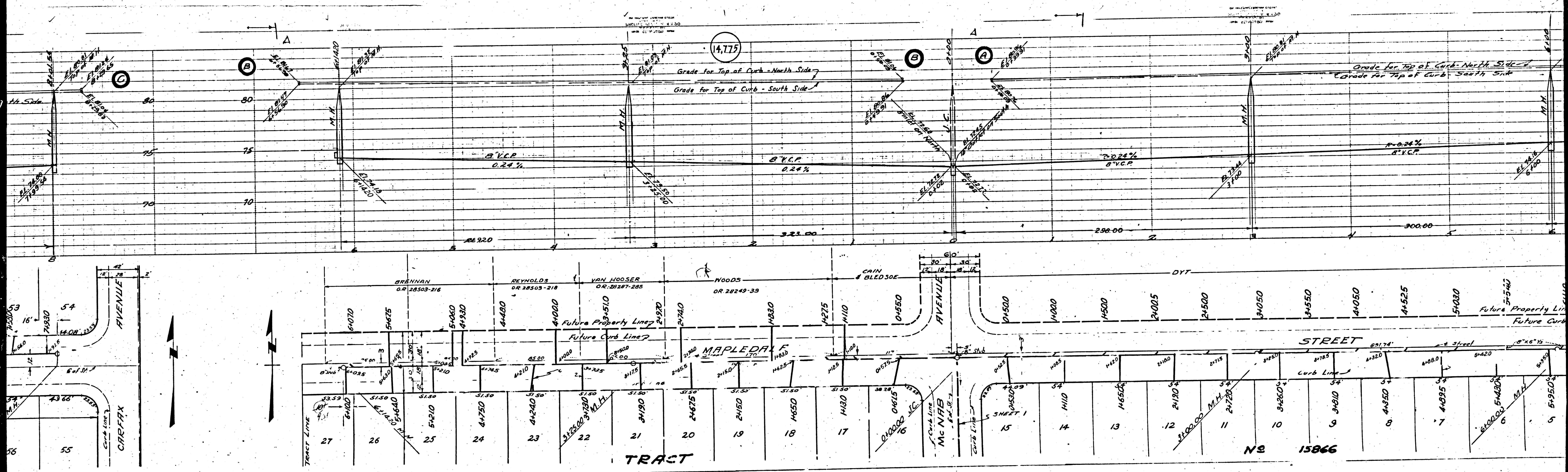
CHECKED BY: [Signature] Nov 27, 1951
OFFICE OF COUNTY ENGINEER - P.C.E. No. 7860

REVISION CHECKED: [Signature] 1-4-52
1650-52 [Signature] CHIEF OF COUNTY ENGINEER
REG. C.E. NO. 7860

B.C. 1010
 SHEET 2 OF 4 SHEETS
 COUNTY OF LOS ANGELES
 SANITATION DISTRICT NO. 2
 600 W. 2ND STREET
 LOS ANGELES, CALIF. 90012

144 Ford

14

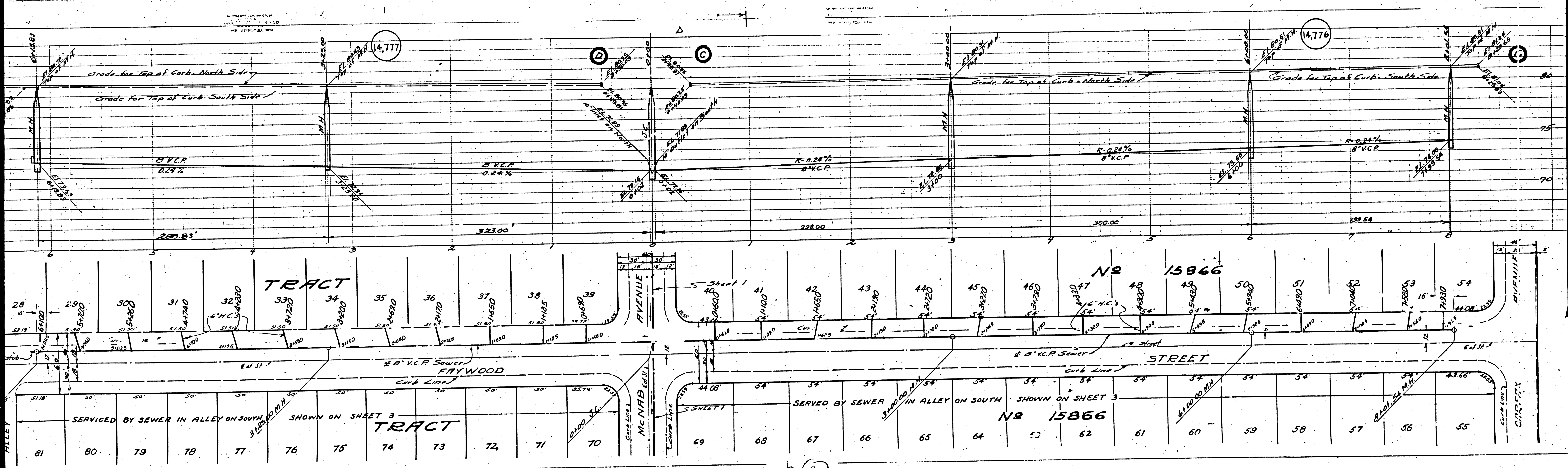


14,775

TRACT

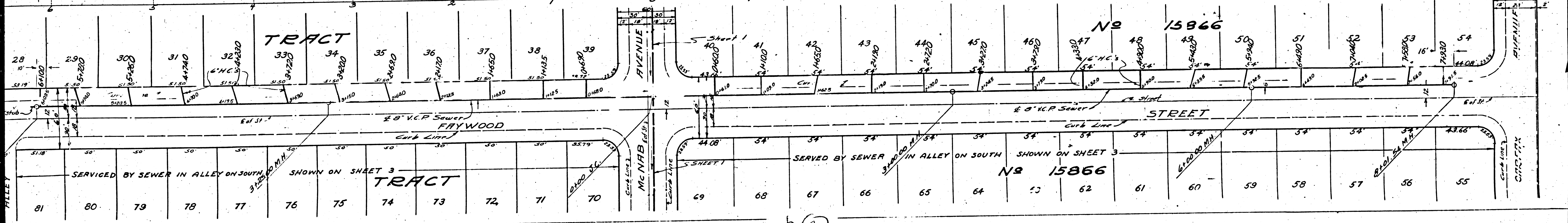
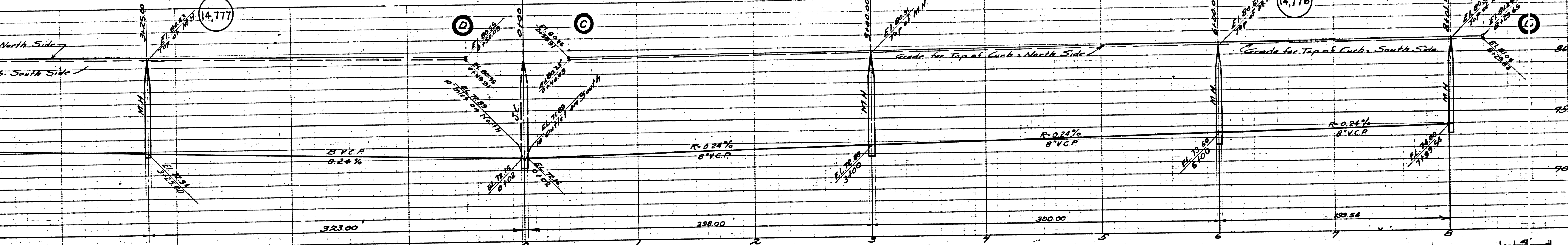
NO 15866

13

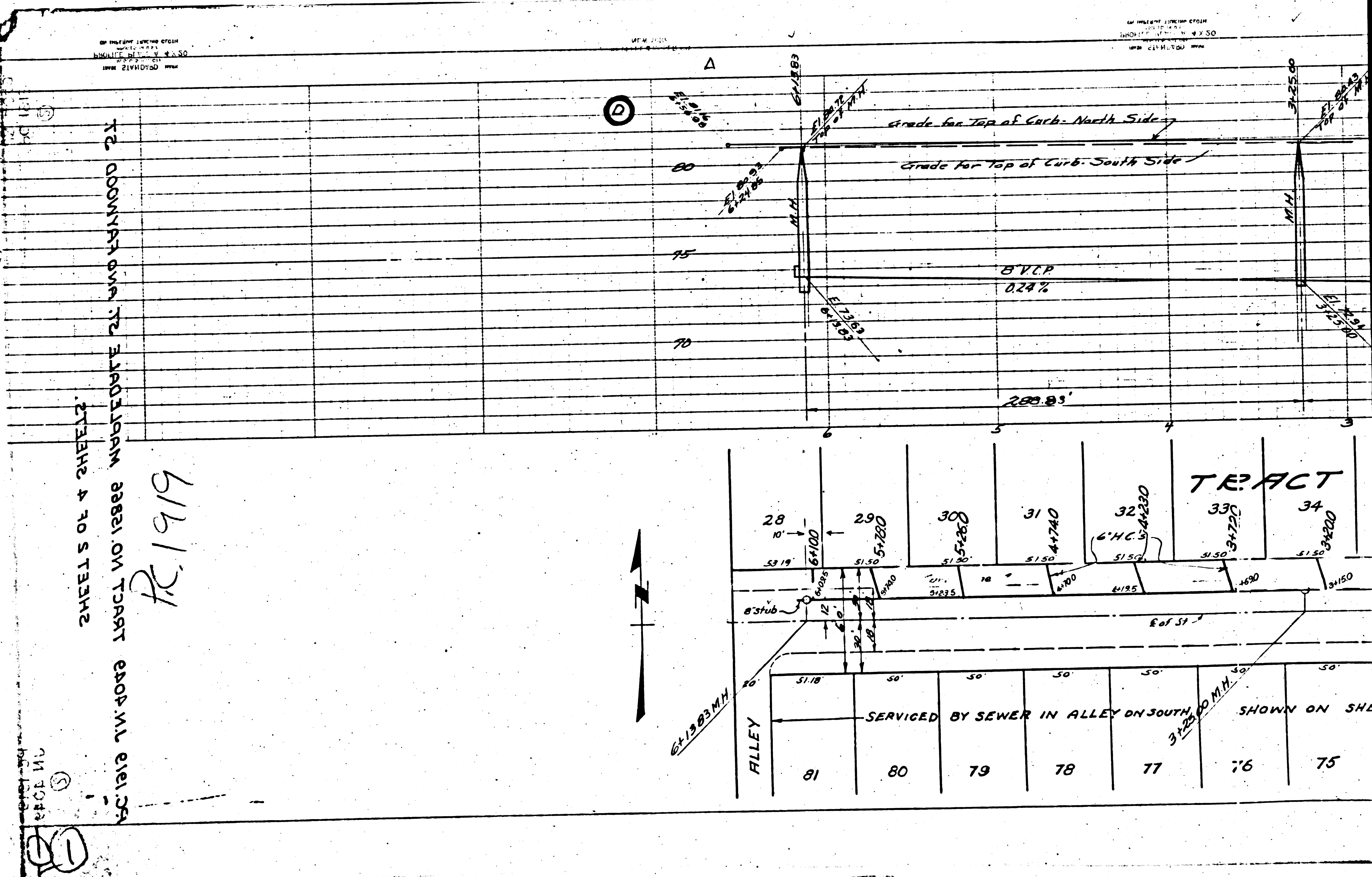


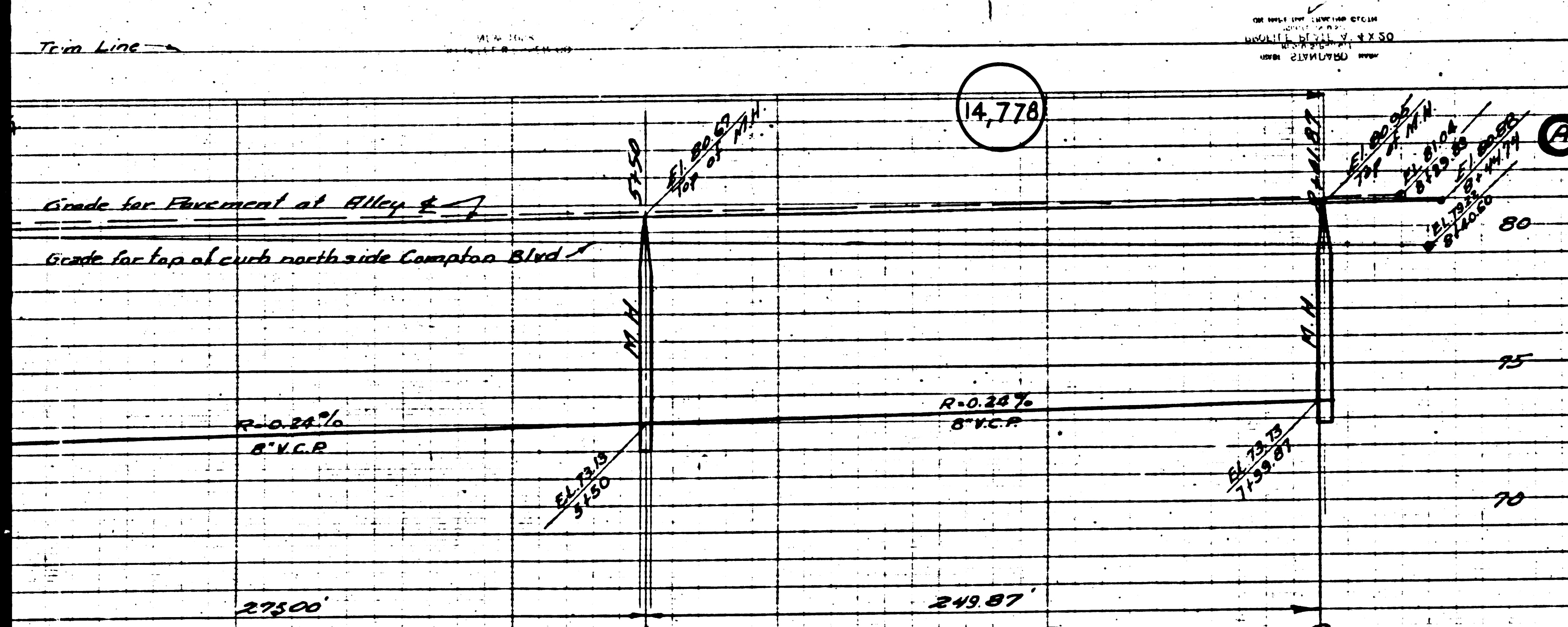
BY THE ENGINEER
 DATE 11-1-20
 SHEET 1 OF 3

BY THE ENGINEER
 DATE 11-1-20
 SHEET 1 OF 3



(2)





FOR CONSTRUCTION NOTES
SEE SHEET 1

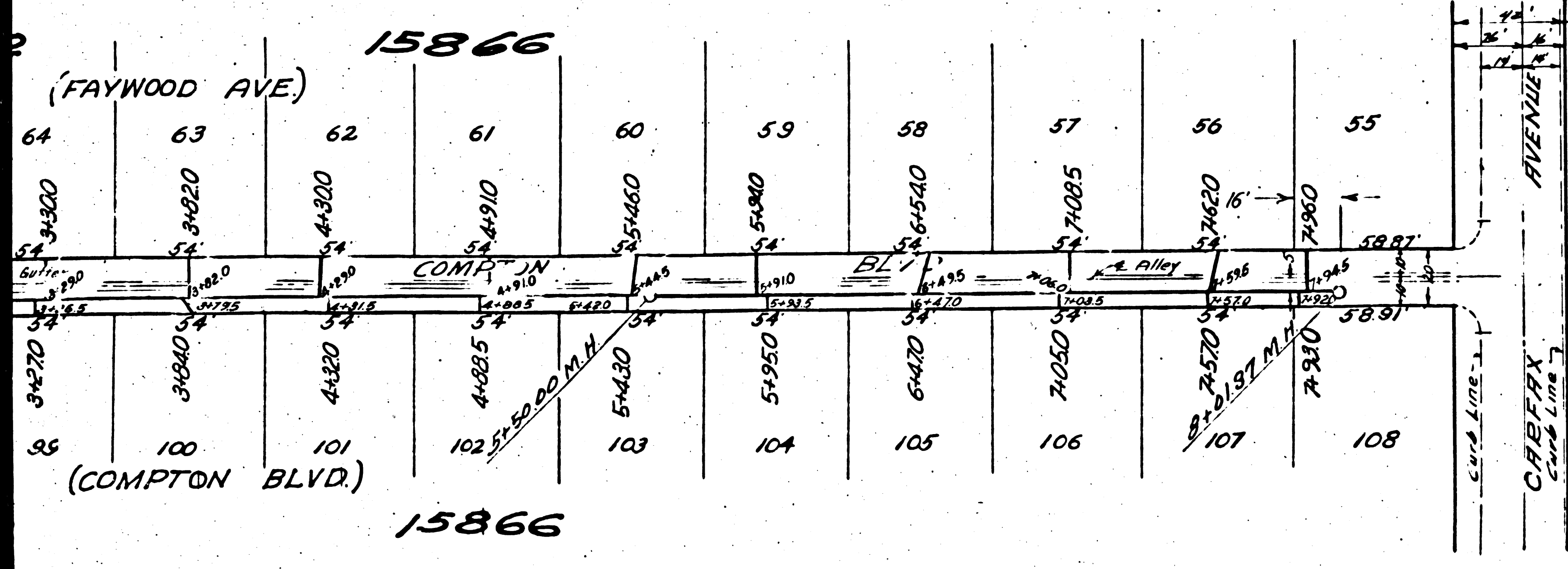
**PROFILE, ALIGNMENT AND GRADE OF
SANITARY SEWER
TO BE CONSTRUCTED IN
FIRST ALLEY NORTH OF
COMPTON BOULEVARD
BETWEEN CARFAX AVENUE AND WESTERLY LINE OF TRACT NO 15866**

IN TRACT NO. 15866
PRIVATE CONTRACT NO 1913
W.S. 33
SHEET 3 OF 4 SHEETS
SCALE: HORIZ. 1"=40'
VERT. 1"=4'
JUNE, 1951

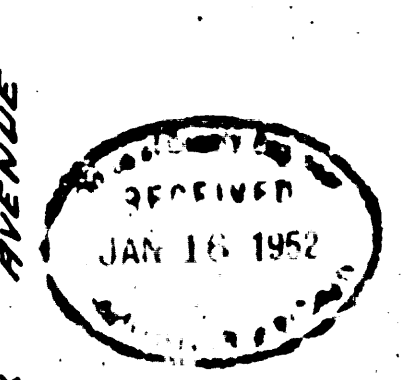
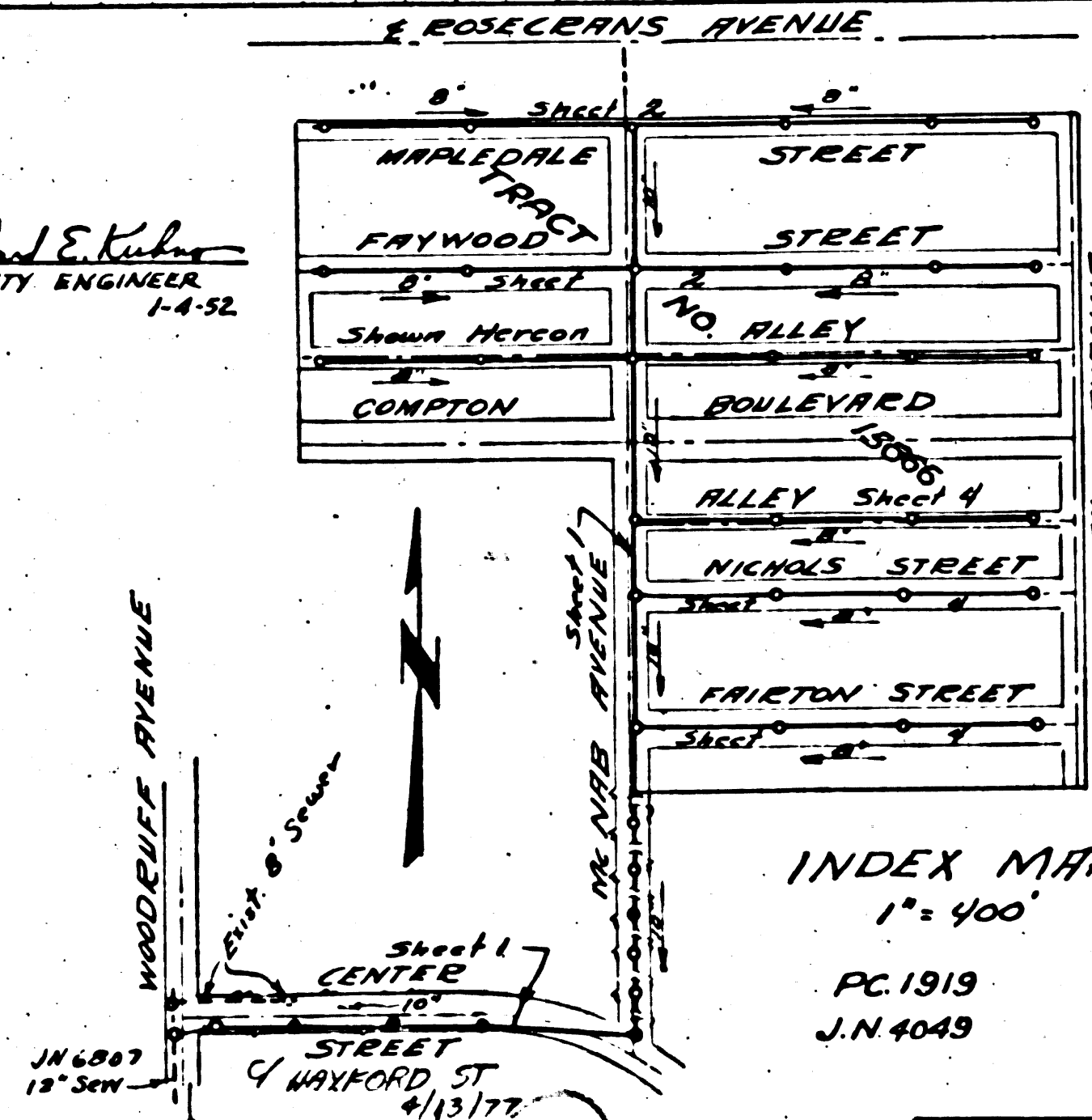
PREPARED IN THE OFFICES OF
SARGENT ENGINEERING CO.
MARK A. ROBIN REG. C.E. NO. 2059

Before breaking into any existing structure
and before final acceptance of this work,
County Sanitation District should be notified
in order that required inspection may be made.

FOR LEGEND
SEE PLAN S-0-64



REVISION CHECKED: *Richard S. Kubler*
OFFICE OF COUNTY ENGINEER
REG. C.E. NO. 1780 1-4-52



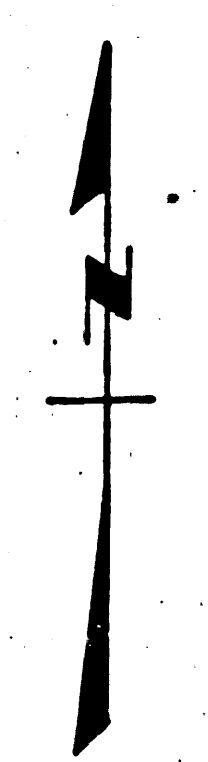
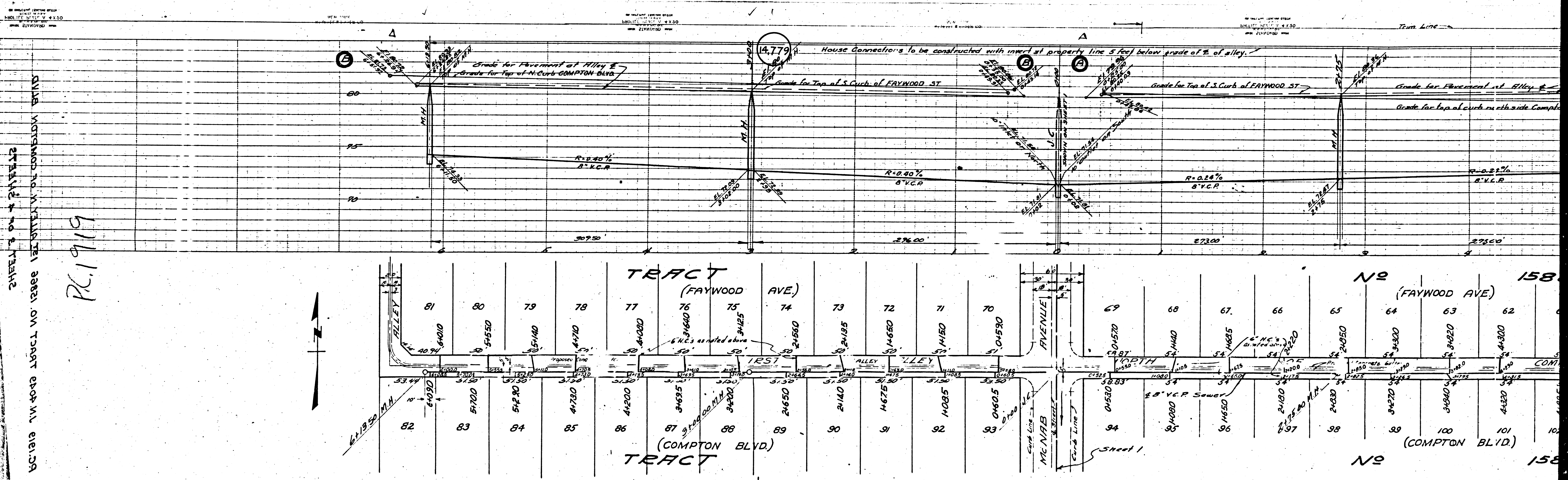
NOTE:
Grades to which this improvement is to be constructed are shown on Plan and Profile. Grades for top of curb, centerline of street and centerline of alley are shown by circles on profile. At all points between designated points, the grade shall be established so as to conform to a straight line drawn between said designated points.
Elevations are in feet above M.S.L. Datum as Mean Sea Level.
This drawing and the data hereon are hereby made a part of the specifications of the County work and shall be construed according to specifications on file in the office of the County Engineer and shall be executed only in the presence of the County Engineer or his duly authorized representative.
Before work can be started, the County Engineer's Building, Subdivision and Street Department, 108 W. 2nd Street, Los Angeles, California, shall be notified and a deposit with the County Engineer, 888 S. Broadway, Los Angeles, California, shall be made.
Approval of this plan by the County of Los Angeles does not constitute a representation as to the accuracy of the location of, or the existence or non-existence of any underground utility, pipe, or structure within the limits of this project.

COUNTY OF LOS ANGELES, CALIFORNIA
APPROVED: *William J. Fox* COUNTY ENGINEER APPROVED BY: *A. M. Rain* OFFICE ENGINEER
CHIEF ENGINEER OF COUNTY SANITATION DISTRICT NO. 2

BY: *Mark A. Robin*
CHIEF DEPUTY

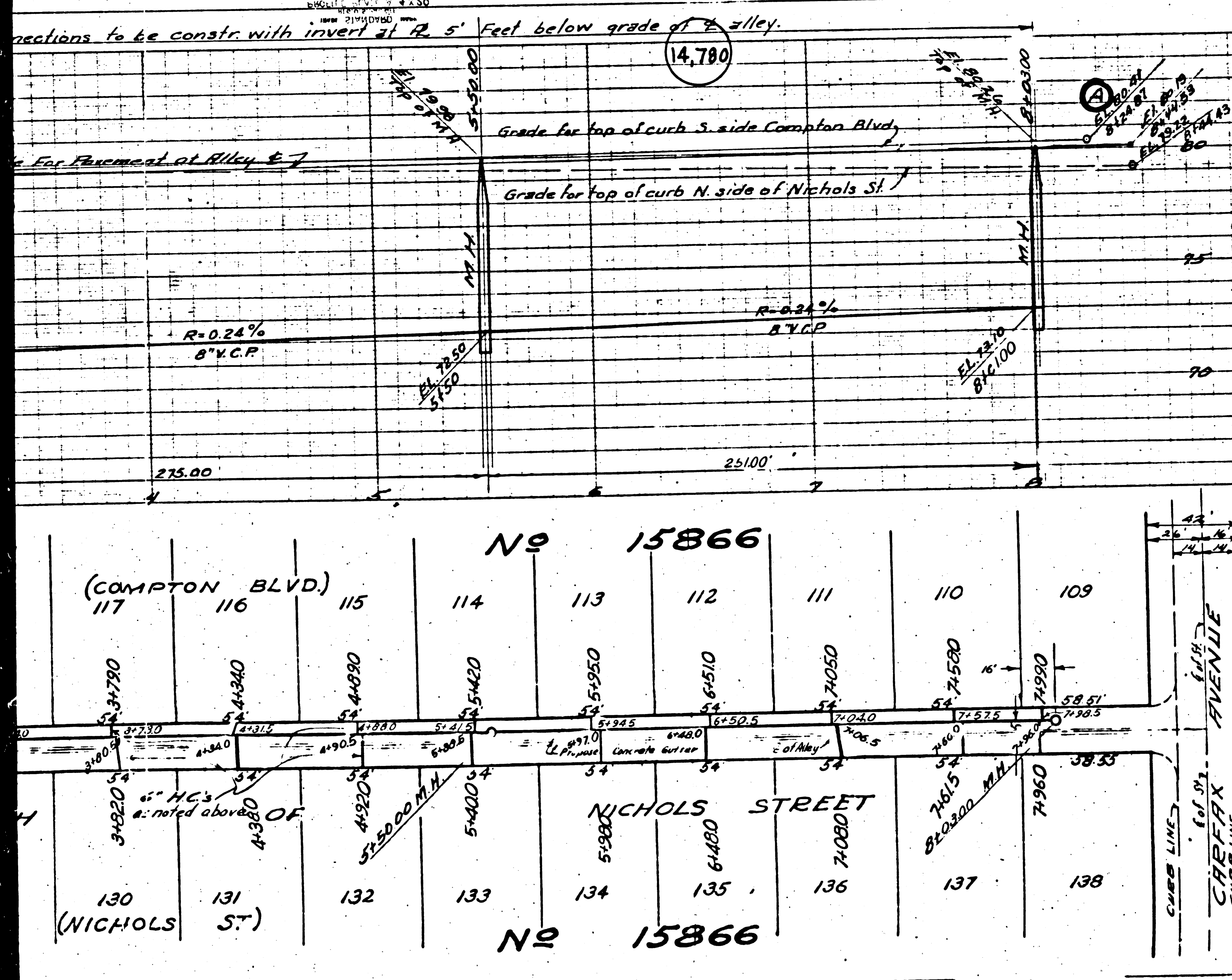
CHECKED BY: *Richard S. Kubler* NOV. 22, 1951
OFFICE OF COUNTY ENGINEER - REG. C.E. NO. 1780

SHEET 3 OF 4 SHEETS
FIRST ALLEY NORTH OF COMPTON BLVD
PC 1913 J.N. 4049



21

Trim Line



FOR CONSTRUCTION NOTES
SEE SHEET 1

PROFILE ALIGNMENT AND GRADE OF
SANITARY SEWERS
 TO BE CONSTRUCTED IN
FIRST ALLEY NORTH OF NICHOLS ST.
 BETWEEN MCNAB AVE. AND CARFAX AVE.
NICHOLS STREET
 BETWEEN MCNAB AVE. AND CARFAX AVENUE.
FRITON STREET
 BETWEEN MCNAB AVE. AND CARFAX AVENUE.

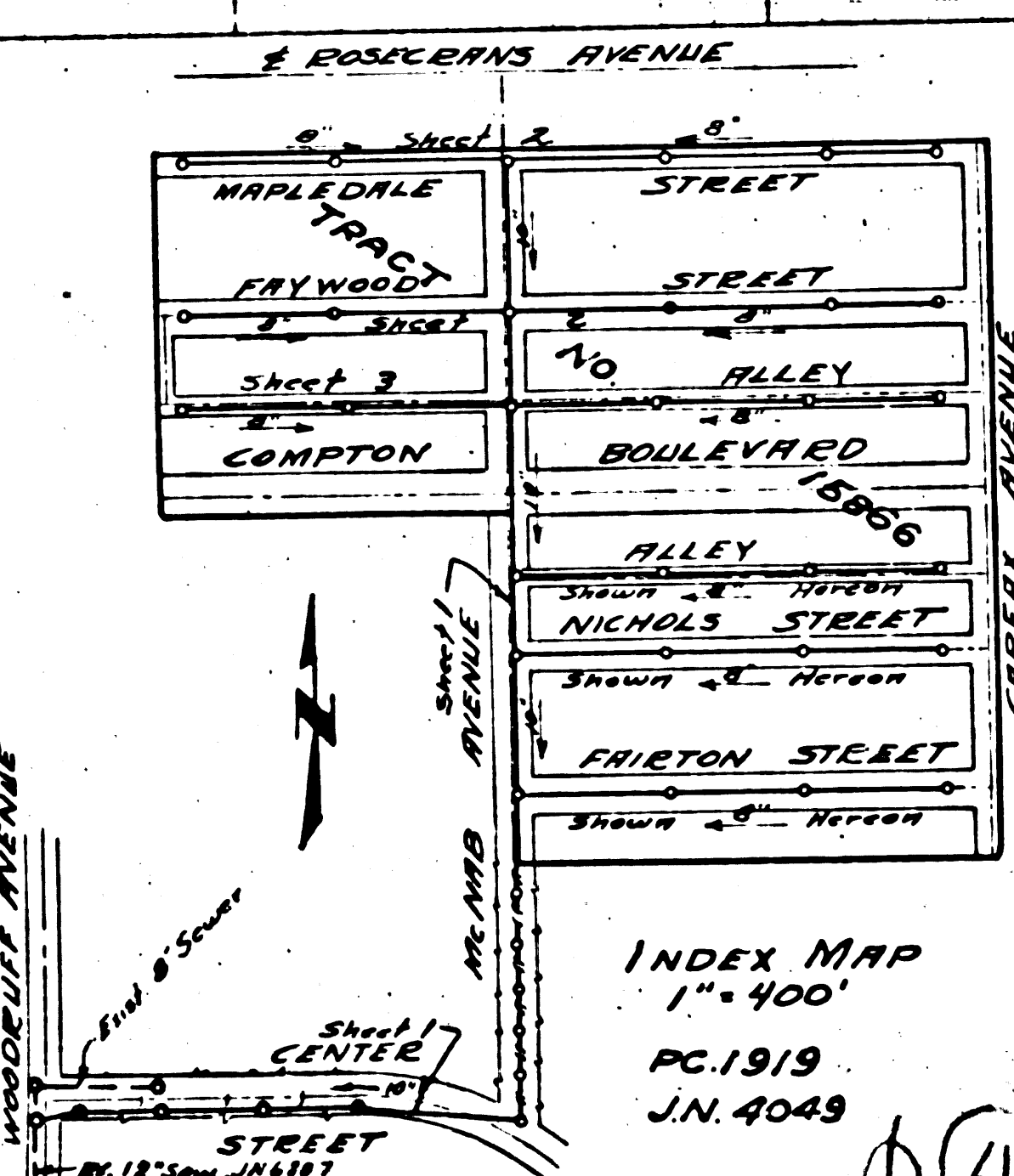
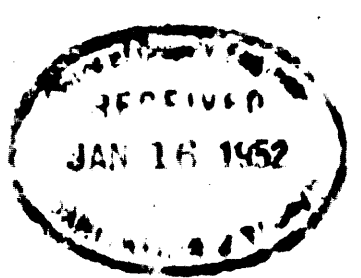
IN TRACT NO. 15866
 PRIVATE CONTRACT NO. 1919
 W.S. 33
SHEET 4 OF 4 SHEETS
 HORIZ. 1"=40'
 VERT. 1"=4'
 JUNE, 1951

PREPARED IN THE OFFICES OF
SEABOARD ENGINEERING CO.
 HAZEL H. ROBIN

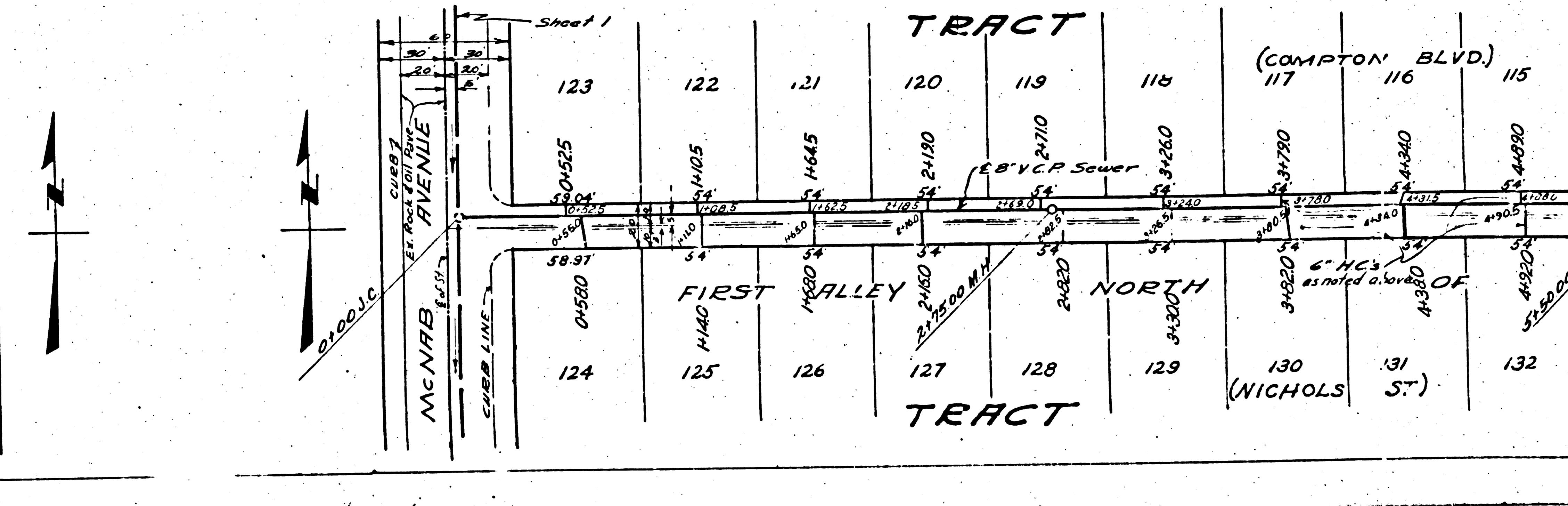
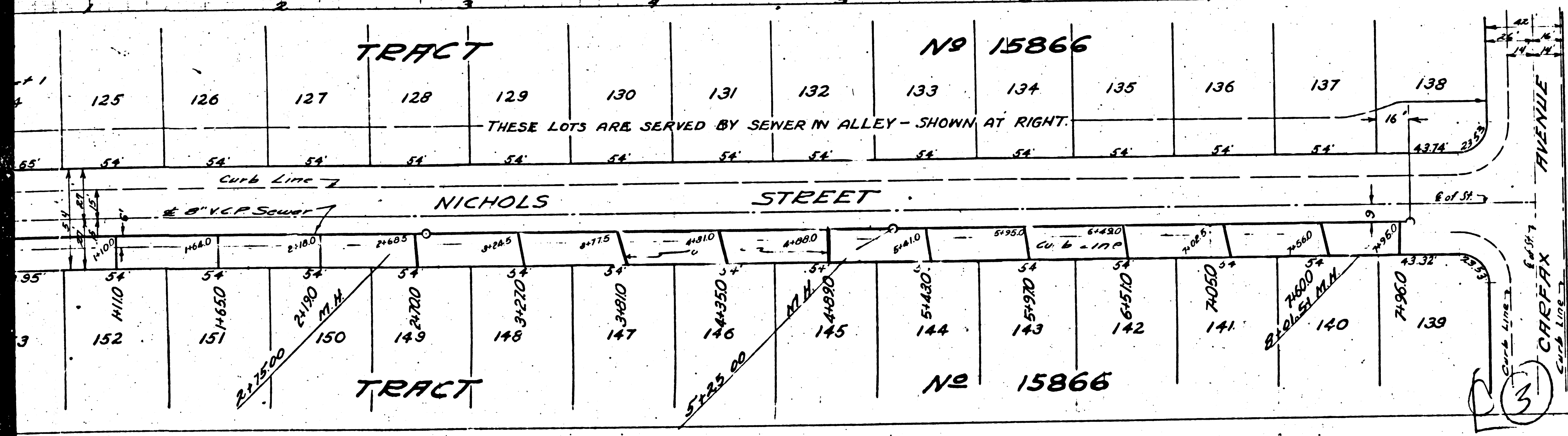
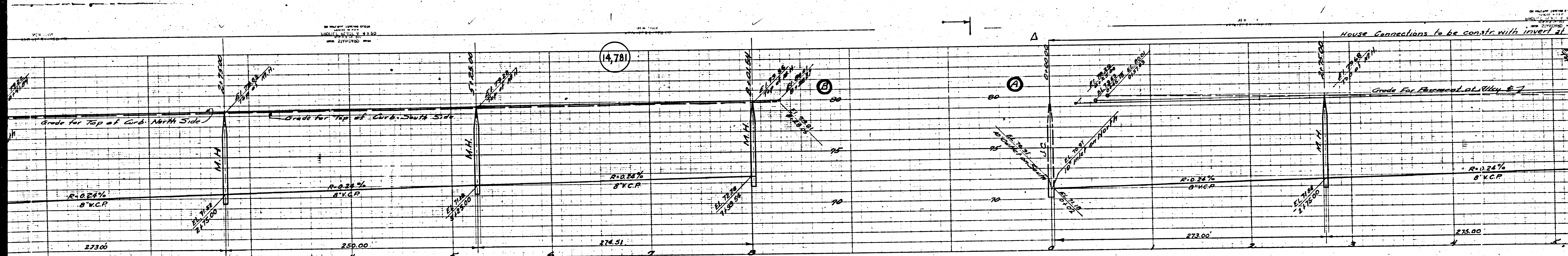
MARK A. ROBIN REG. C.E. No. 2059
FOR LEGEND
 See Plan No. S-64

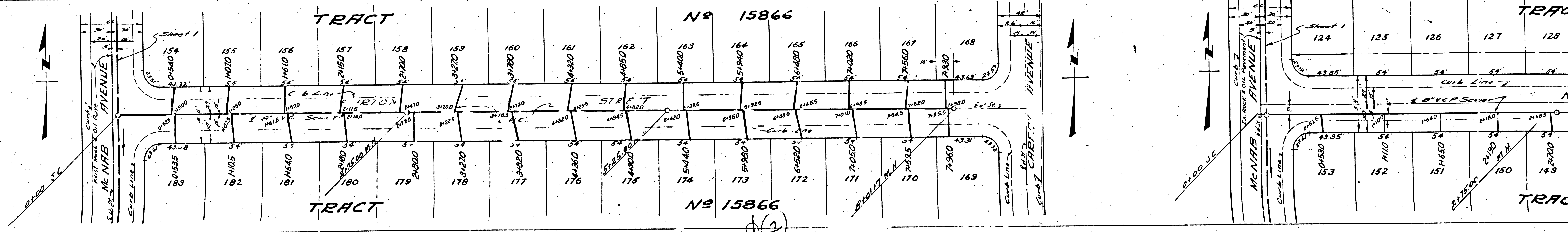
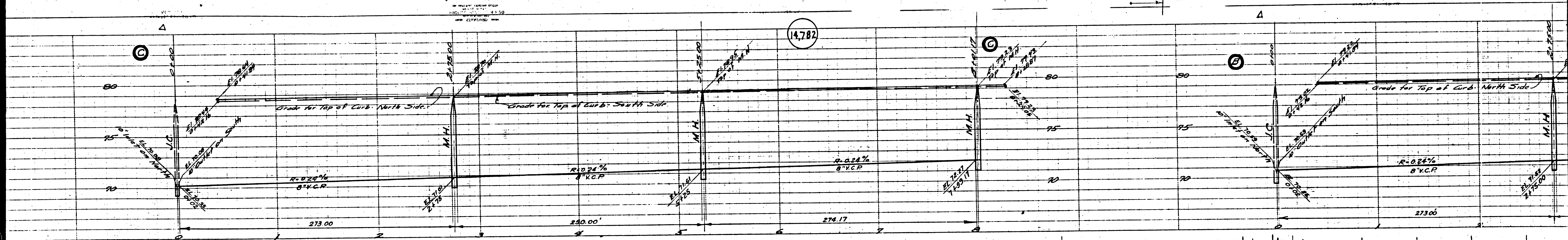
before breaking into any existing structure
 and before final acceptance of this work,
 County Sanitation District should be notified
 in order that required inspection may be made.

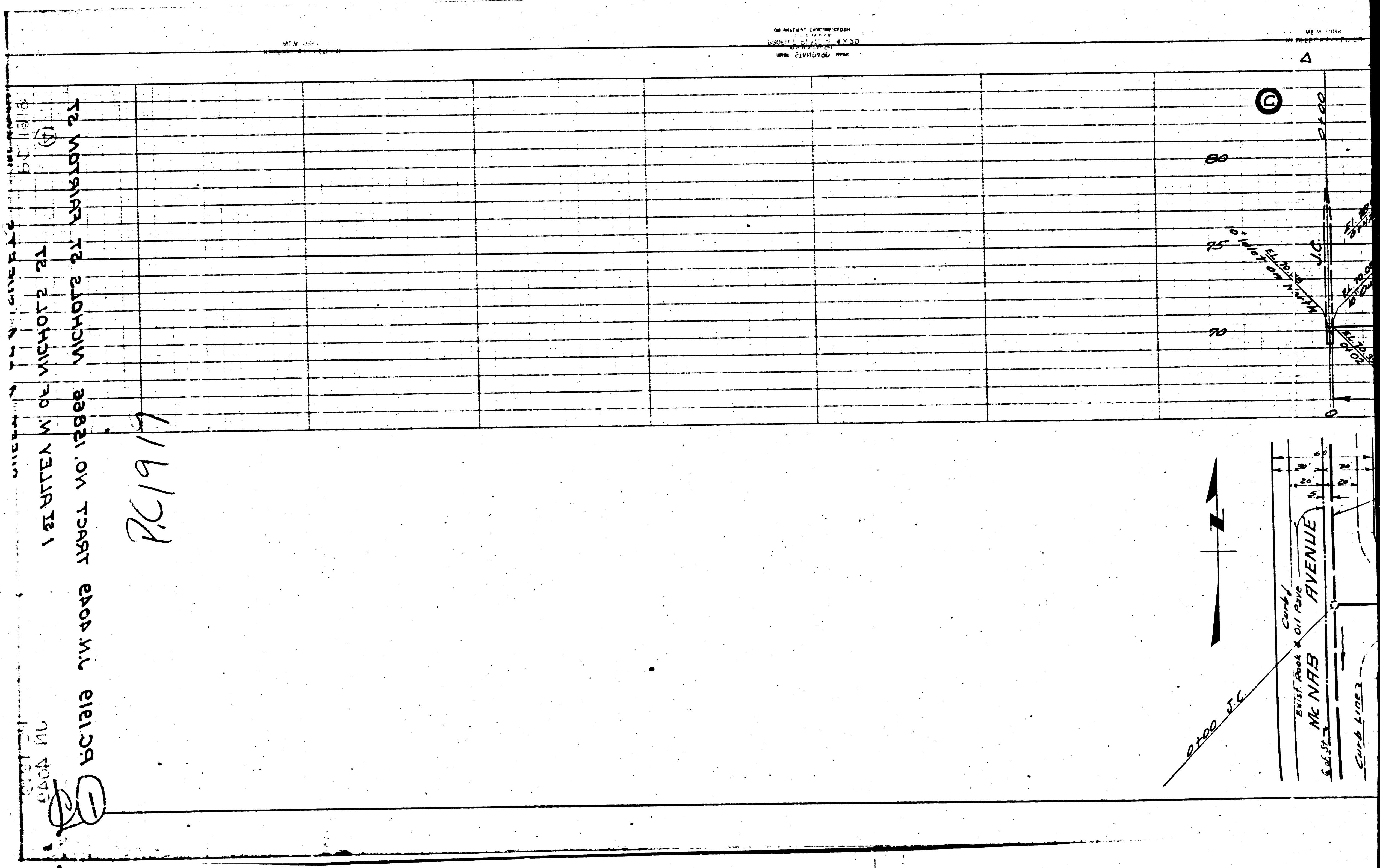
NOTE:
 Grades to which this improvement is to be constructed are shown on Plans and Profiles.
 Grade points at top of curb, center line of street and centerline of alley are shown by circles
 on profiles. At all points between designated points the grade shall be established so as
 to conform to a straight line between designated points.
 Divisions are in feet, except 1/2" and 3/4" which are in inches.
 This drawing and the data hereon are hereby accepted by the office of the County
 Engineer and shall be prosecuted only in the presence of the County Engineer.
 Work shall be constructed according to specifications on file in the office of the
 County Streets from the L.A. County Road Department, 100 N. Street, Los Angeles, California.
 Approval of this drawing by the County Engineer does not constitute a representation as
 to the accuracy of the location of, or the existence or non-existence of, any underground
 utility, pipe or structure within the limits of this project.



COUNTY OF LOS ANGELES, CALIFORNIA
 AM. RAWN
 APPROVED: WILLIAM J. FOX County Engr. APPROVED BY: [Signature] OFFICE ENGR.
 CHIEF ENGINEER OF COUNTY SANITATION DISTRICT NO. 2.
 REVISION CHECKED: [Signature] J. 4-52
 OFFICE OF COUNTY ENGINEER REG. C.E. No. 760
 BY: [Signature] CHIEF DEPUTY
 CHECKED BY: [Signature] J.N. 3/1951
 OFFICE OF COUNTY ENGINEER - REG. NO. 760







1. 2. 3. 4. 5. 6. 7. 8. 9. 10. 11. 12. 13. 14. 15. 16. 17. 18. 19. 20. 21. 22. 23. 24. 25. 26. 27. 28. 29. 30. 31. 32. 33. 34. 35. 36. 37. 38. 39. 40. 41. 42. 43. 44. 45. 46. 47. 48. 49. 50. 51. 52. 53. 54. 55. 56. 57. 58. 59. 60. 61. 62. 63. 64. 65. 66. 67. 68. 69. 70. 71. 72. 73. 74. 75. 76. 77. 78. 79. 80. 81. 82. 83. 84. 85. 86. 87. 88. 89. 90. 91. 92. 93. 94. 95. 96. 97. 98. 99. 100.

PC1919

RUE DE LA VILLE
 RUE DE LA GARE
 AVENUE
 Mc NRS
 RUE DE LA VILLE