

- NOTE:
1. NO REPRESENTATIVE OF THE COUNTY ENGINEER WILL SURVEY OR LAY OUT ANY PORTION OF THE WORK.
  2. THE OWNER OR HIS AUTHORIZED REPRESENTATIVE SHALL FURNISH THE COUNTY ENGINEER WITH GRADE SHEETS AND STATIONS FOR ALL HOUSE CONNECTIONS AND Y BRANCHES AND SHALL PROVIDE STAKES FOR THEM AT THEIR PROPER LOCATIONS WITH STATIONING IN WRITING BY THE OWNER OR HIS REPRESENTATIVE.
  3. NO REVISIONS SHALL BE MADE IN THESE PLANS WITHOUT APPROVAL OF THE COUNTY ENGINEER.
  4. USE STANDARD MANHOLE FRAMES AND COVERS, S-117.
  5. USE STANDARD STRENGTH PIPE EXCEPT AS NOTED.
  6. USE CEMENT MORTAR FOR ALL VITRIFIED CLAY PIPE JOINTS.
  7. REINFORCE ALL TRENCH WITHIN RAVED AREA TO MEET L.A. COUNTY ROAD DEPT. REQUIREMENTS, IN ACCORDANCE WITH POINT 8. ENCASE FOUR FEET OF SEWER AT POINTS OF INTERFERENCE WITH POLES, S-119.
  8. HOUSE CONNECTIONS TO BE CONSTRUCTED WITH INVERT AT PROPERTY LINE 5 FEET BELOW CURB GRADE.
  9. ALL STRUCTURES SHALL BE BRICK SEWER STRUCTURES, EXCEPT AS NOTED.
  10. PROVIDE STAKES ON THE PROPERTY LINES OR PROPERTY LINES PRODUCED AT RIGHT ANGLES TO THE SEWER LINE AT THE CENTER LINE OF EACH MANHOLE.
  11. STOPPERS TO BE INSTALLED WITH JAWY COMPOUND BY MANUFACTURER AT HIS PLANT, SPECS. SEC. 33.46.
  12. CONCRETE PAVEMENT TO BE CUT NOT LESS THAN 12\"/>

PROFILE, ALIGNMENT AND GRADE OF  
**SANITARY SEWERS**  
 TO BE CONSTRUCTED IN  
**OBISPO AVENUE**  
 BETWEEN ARBOR ROAD AND BOMBERRY STREET  
**CENTRALIA STREET**  
 BETWEEN OBISPO AVENUE AND PARAMOUNT BLVD  
 IN TRACT N<sup>o</sup> 17229

PRIVATE CONTRACT NO. 192  
 W. 5.30  
 SHEET 1 OF 3 SHEETS  
 SCALE: VERT. 1" = 4'  
 HOR. 1" = 40'  
 OCT 1951  
 PREPARED IN THE OFFICES OF  
**ENGINEERING SERVICE CORPORATION**

**ENGINEERING SERVICE CORPORATION**  
 1127 W WASHINGTON BLVD.  
 LOS ANGELES 15 CALIF. PR. 7281

REVISIONS

TRACED BY	AME
DESIG. BY	K.S.
CK'D BY	
SUBMITTED	7/28

W. O. NO.	DWG. NO.	DATE	SCALE	L.B.	P.B.
5977-129		OCT 1951	1" = 40'		

NOTE:

GRADES TO WHICH THIS IMPROVEMENT IS TO BE CONSTRUCTED ARE SHOWN ON PLANS AND PROFILES. GRADE POINTS FOR TOP OF CURB, CENTER LINE OF TRENCH OR CENTER LINE OF ALLEY ARE SHOWN BY CIRCLES ON PROFILES. AT ALL POINTS BETWEEN DESIGNATED POINTS THE GRADE SHALL BE ESTABLISHED SO AS TO CONFORM TO THE LIGHT LINE DRAWN BETWEEN SAID DESIGNATED POINTS.

ELEVATIONS ARE IN FEET ABOVE U. S. S. OF 'UM OR MEAN SEA LEVEL.

THIS DRAWING AND THE DATA HEREIN ARE HEREBY MADE A PART OF THE SPECIFICATIONS.

WORK SHALL BE CONSTRUCTED ACCORDING TO SPECIFICATIONS ON FILE IN THE OFFICE OF THE COUNTY ENGINEER AND SHALL BE PROSECUTED ONLY IN THE PRESENCE OF THE COUNTY ENGINEER OR HIS AUTHORIZED REPRESENTATIVE.

BEFORE WORK CAN BE STARTED THE CONTRACTOR MUST OBTAIN A PERMIT TO EXCAVATE IN COUNTY STREETS FROM THE L.A. COUNTY PUBLIC DEPT. JOB W. 2147 ST. AND MAKE A DEPOSIT WITH THE COUNTY ENGINEER, 828 COUNTY ENGINEERING BUILDING SUFFICIENT TO COVER THE COST OF CONSTRUCTION INSPECTION AND RECORD PLANS.

APPROVAL OF THIS PLAN BY THE COUNTY OF LOS ANGELES DOES NOT CONSTITUTE A REPRESENTATION AS TO THE ACCURACY OF THE LOCATION OF OR THE EXISTENCE OR NON-EXISTENCE OF ANY UNDERGROUND UTILITY, PIPE OR STRUCTURE WITHIN THE LIMITS OF THIS PROJECT. THIS NOTE APPLIES TO ALL SHEETS.

COUNTY OF LOS ANGELES, CALIFORNIA

APPROVED: *[Signature]* COUNTY ENGINEER

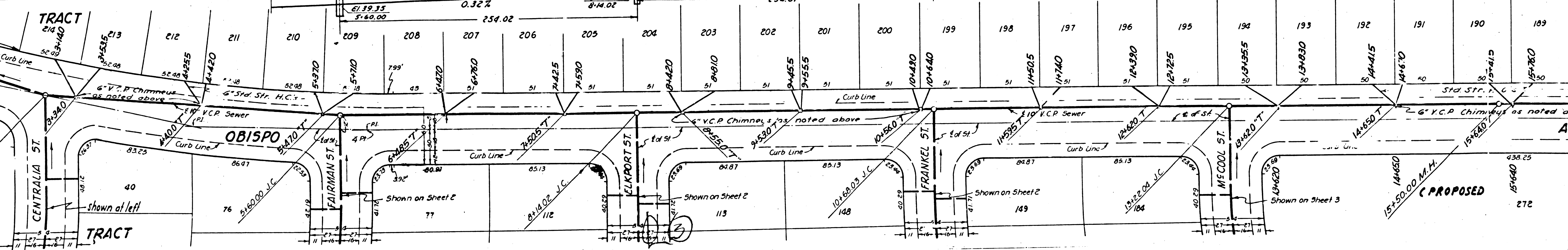
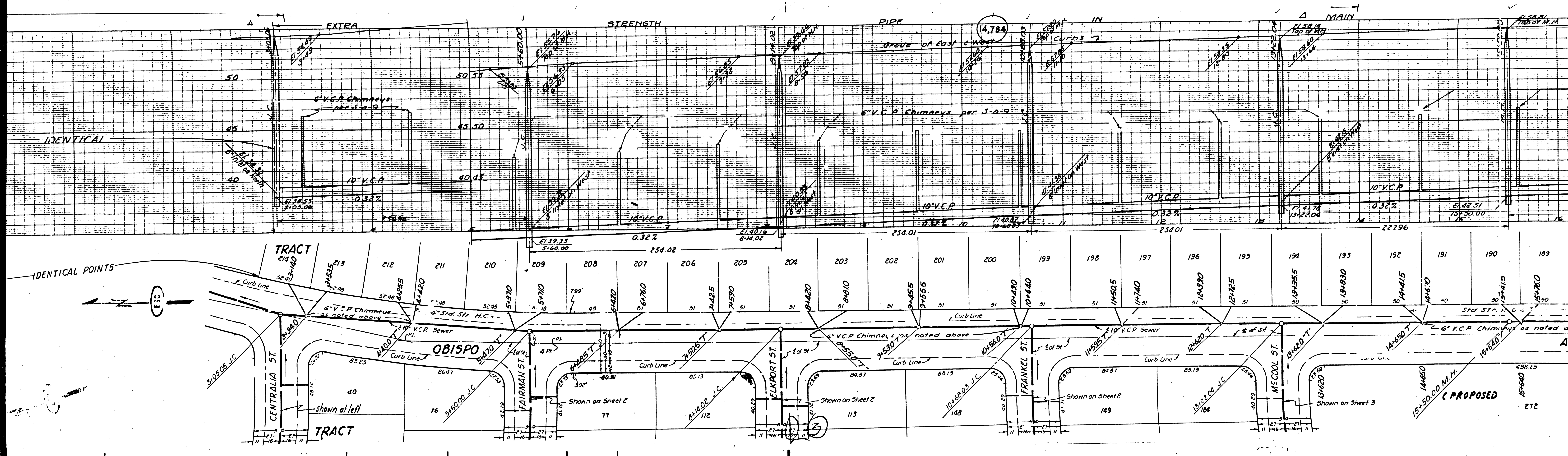
APPROVED BY: *[Signature]* Office Engineer  
 COUNTY ENGINEER OF COUNTY  
 SANITATION DISTRICT NO. 3

CHECKED: *[Signature]* 10-14-51  
 OFFICE OF COUNTY ENGINEER, REG. C. E. NO. 7834

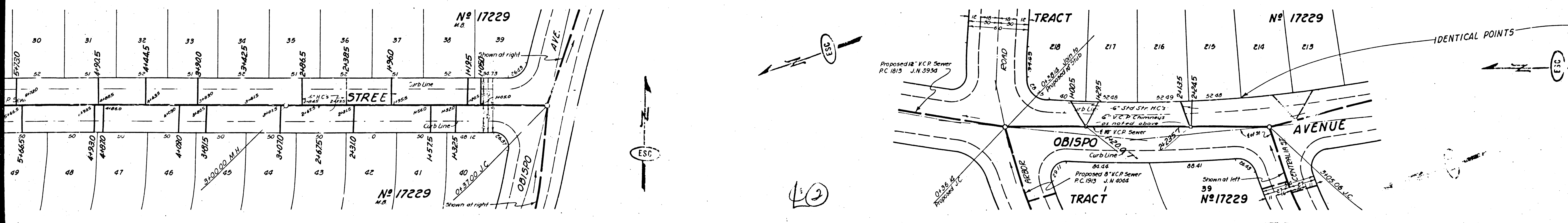
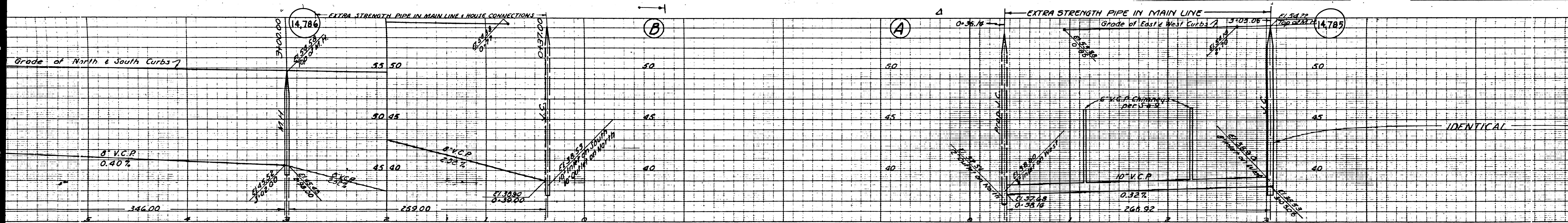
SANITARY SEWERS  
 CENTRALIA ST.  
 OBISPO AVE.  
 BOMBERRY ST.

INDEX MAP  
 SCALE 1" = 400'  
 P.C. 811 N 400'  
 TRACT N<sup>o</sup> 17229

4



PROPOSED



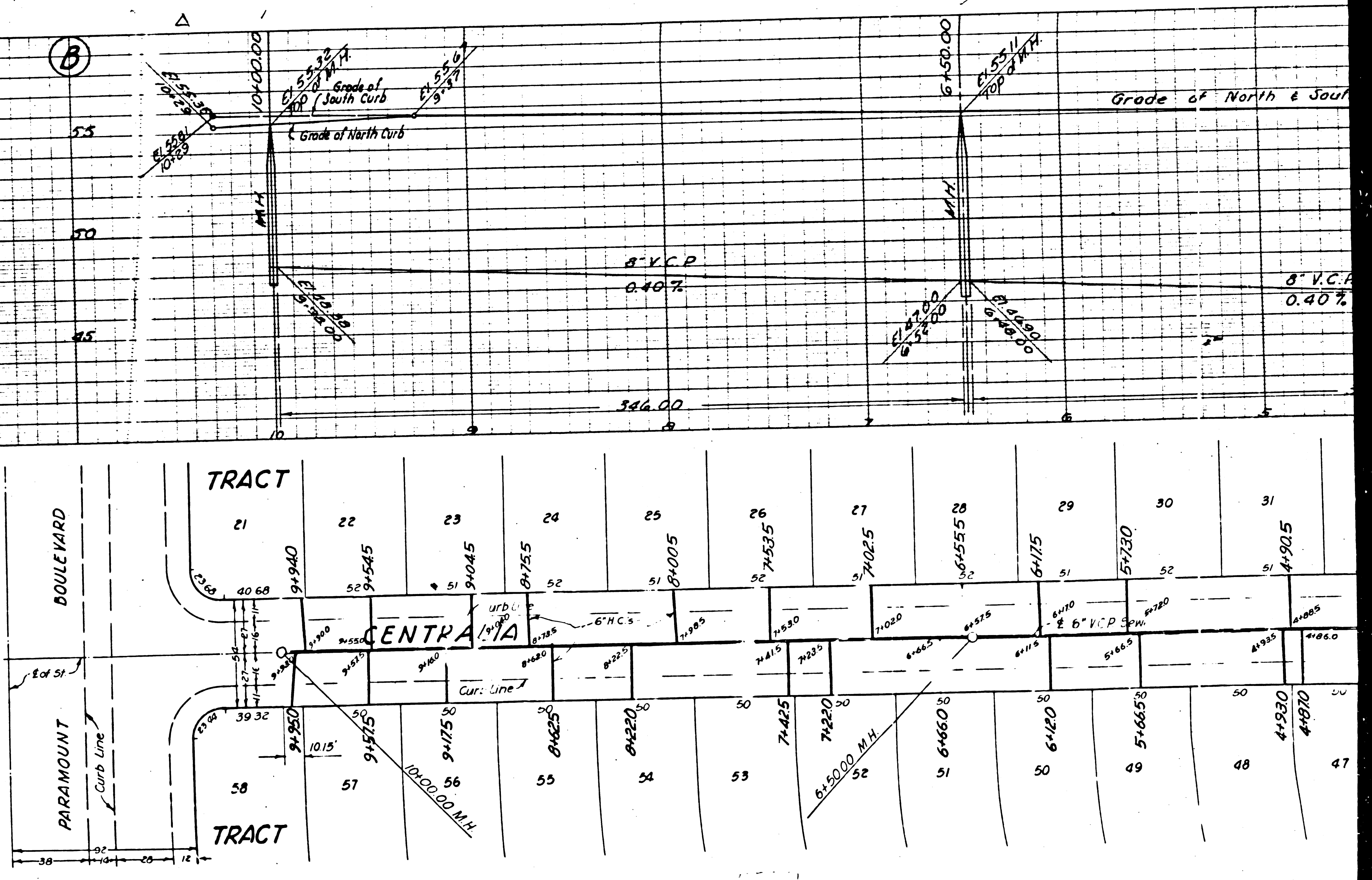
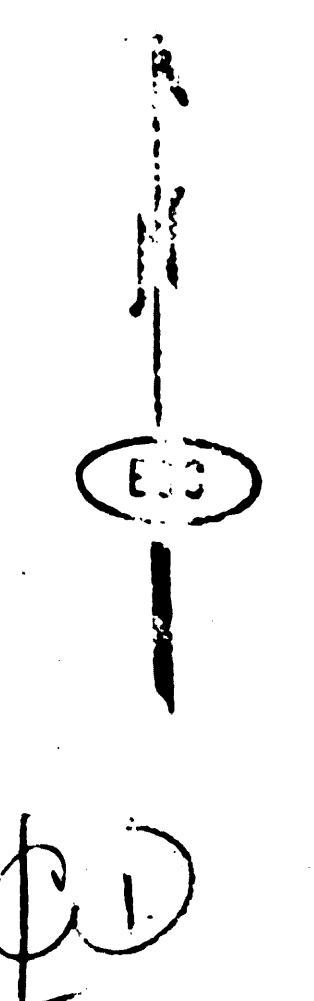
12

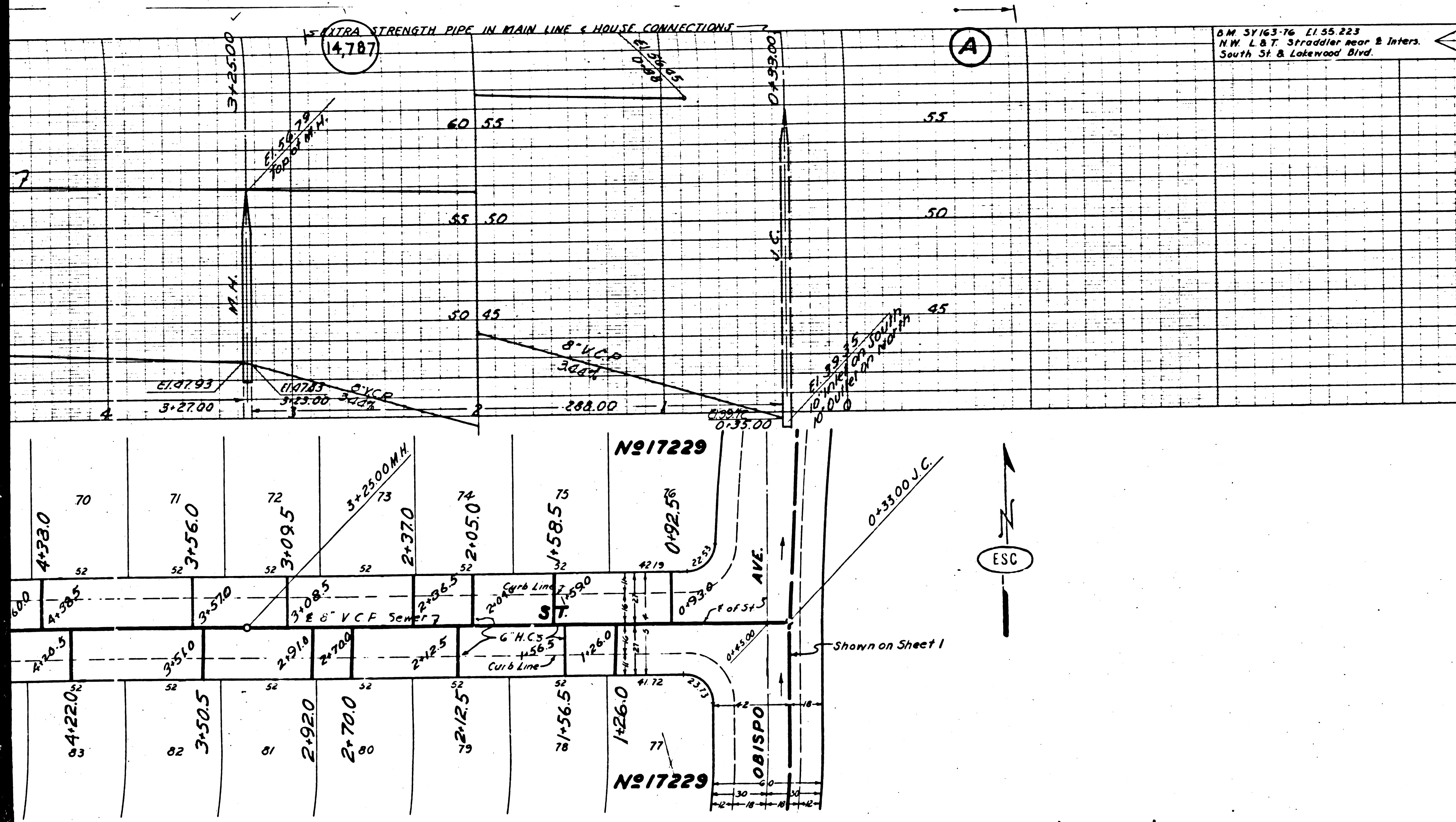
1

ESTABLISHED  
ROADWAY  
CONTRIBUTION  
TO ALIQUOTS

23 MAR 1971

PC 1771





4 M 37163-76 E155 223  
 N.W. L & T. Straddler near E Inter.  
 South St & Lakewood Blvd.

PROFILE, ALIGNMENT AND GRADE OF  
**SANITARY SEWERS**  
 TO BE CONSTRUCTED IN  
**FAIRMAN ST.**  
 BETWEEN OBISPO AVE AND PARAMOUNT BLVD.  
**ELKPORT ST.**  
 BETWEEN OBISPO AVE AND PARAMOUNT BLVD.  
**FRANKEL ST.**  
 BETWEEN OBISPO AVE AND PARAMOUNT BLVD.  
 IN TRACT NO 17229

PRIVATE CONTRACT NO. 1981  
 W.S. 30  
 SHEET 2 OF 3 SHEETS

VERT. 1" = 4'  
 SCALE: HOR. 1" = 40'

OCT. 1951  
 PREPARED IN THE OFFICES OF  
 ENGINEERING SERVICE CORPORATION

ENGINEERING SERVICE CORPORATION  
 1127 W WASHINGTON BLVD  
 LOS ANGELES 15 CALIF PR. 7281

REVISIONS			
NO.	DESCRIPTION	DATE	BY

TRACED BY C.W.E.  
 DESG'D BY K.S.  
 CK'D BY  
 SUBMITTED M.S.

W O NO	DWG NO	DATE	SCALE	L.B.	P.B.
2311-148		OCT. 51	VERT. 1" = 4' HOR. 1" = 40'		

FOR LEGEND SEE PLAN NO. S-8-84  
 FOR CONSTRUCTION NOTES SEE SHEET 1

Before breaking into any existing structure and before final acceptance of this work, County Sanitation District should be notified in order that required inspection may be made.

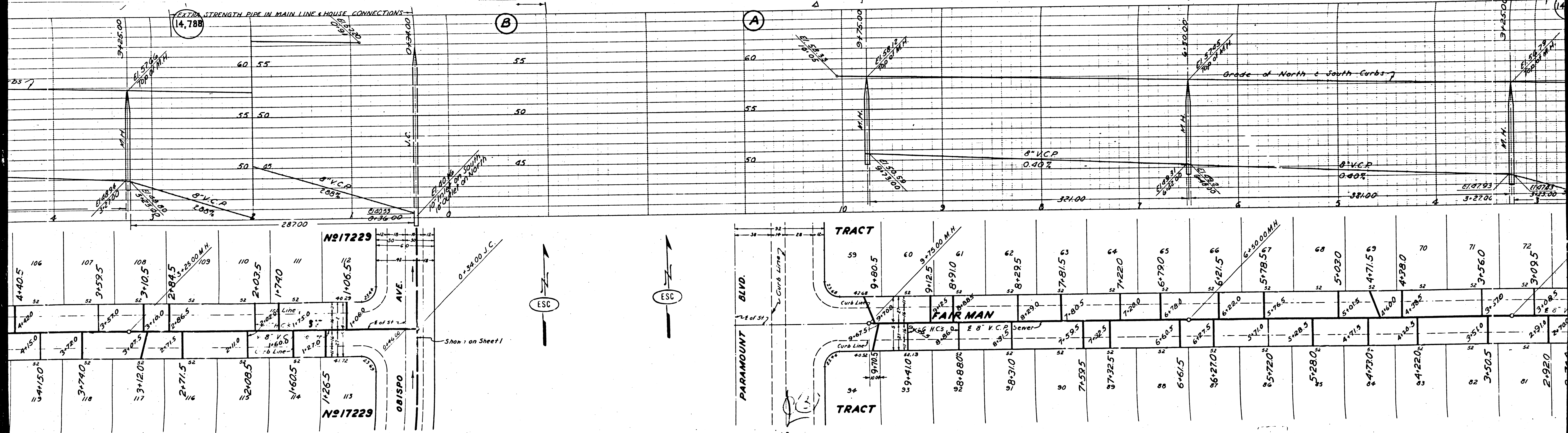
COUNTY OF LOS ANGELES, CALIFORNIA  
 APPROVED: WILLIAM J. ROY - COUNTY ENGINEER  
 BY: *[Signature]*  
 CHIEF DEPUTY COUNTY ENGINEER

APPROVED BY: *[Signature]* OFFICE ENGINEER  
 CHIEF ENGINEER OF COUNTY SANITATION DISTRICT NO. 3

CHECKED: *[Signature]* 10-19-51  
 OFFICE OF COUNTY ENGINEER, 416 C. E. NO. 7960

12 WASHINGTON  
 LOS ANGELES  
 90001

(4)



EXTRA STRENGTH PIPE IN MAIN LINE & HOUSE CONNECTIONS  
 (14.788)

(B)

(A)

Grade of North & South Curbs

8' V.C.P.  
0.40%

8' V.C.P.  
0.40%

No 17229

No 17229

0.34.00 J.C.

ESC

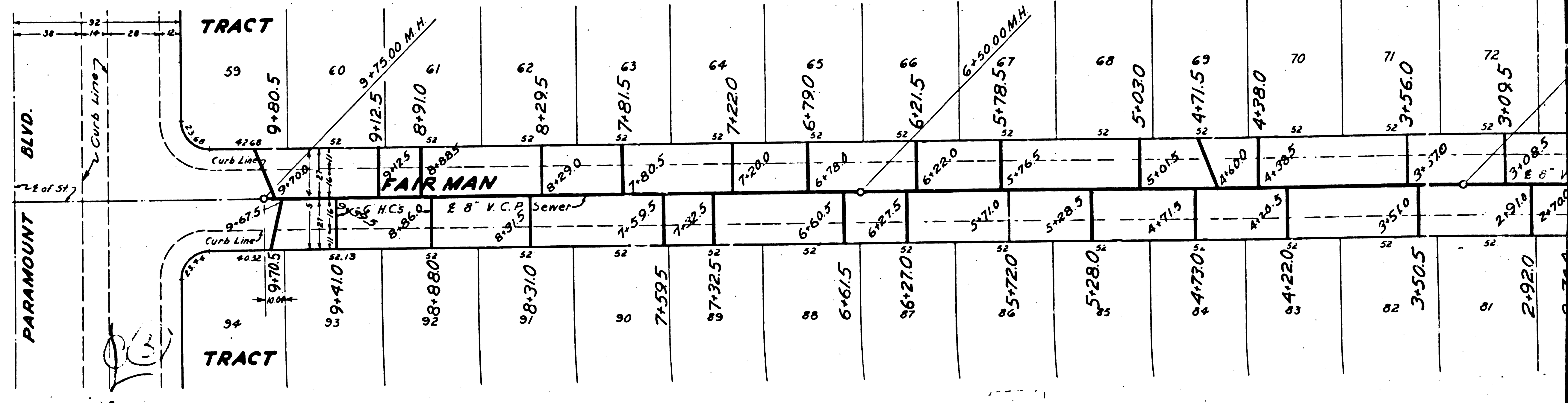
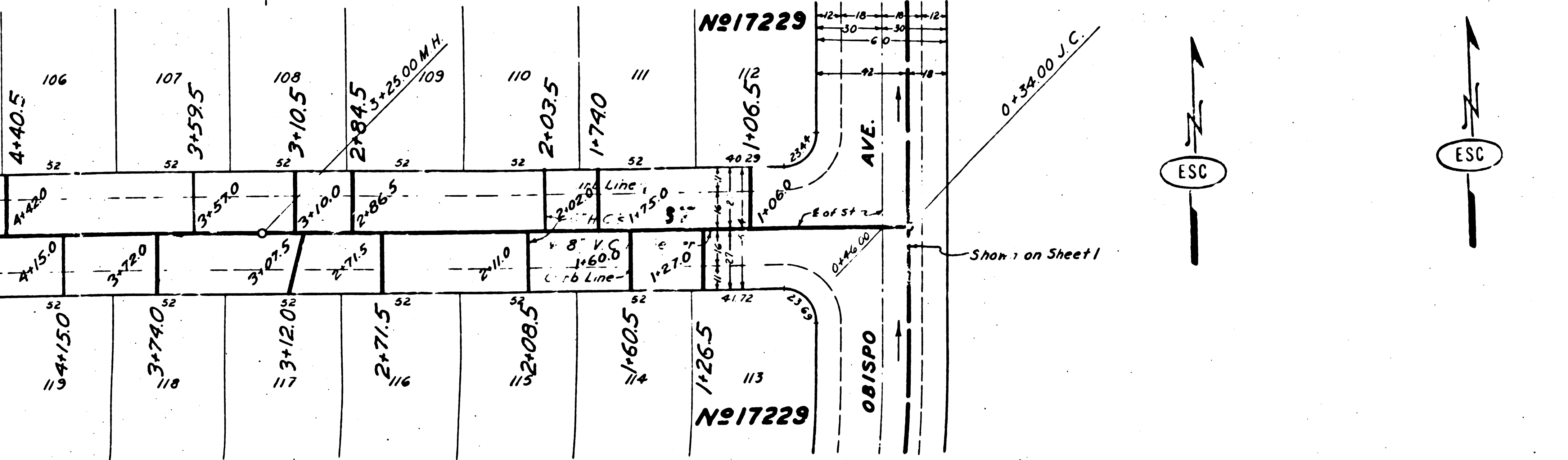
ESC

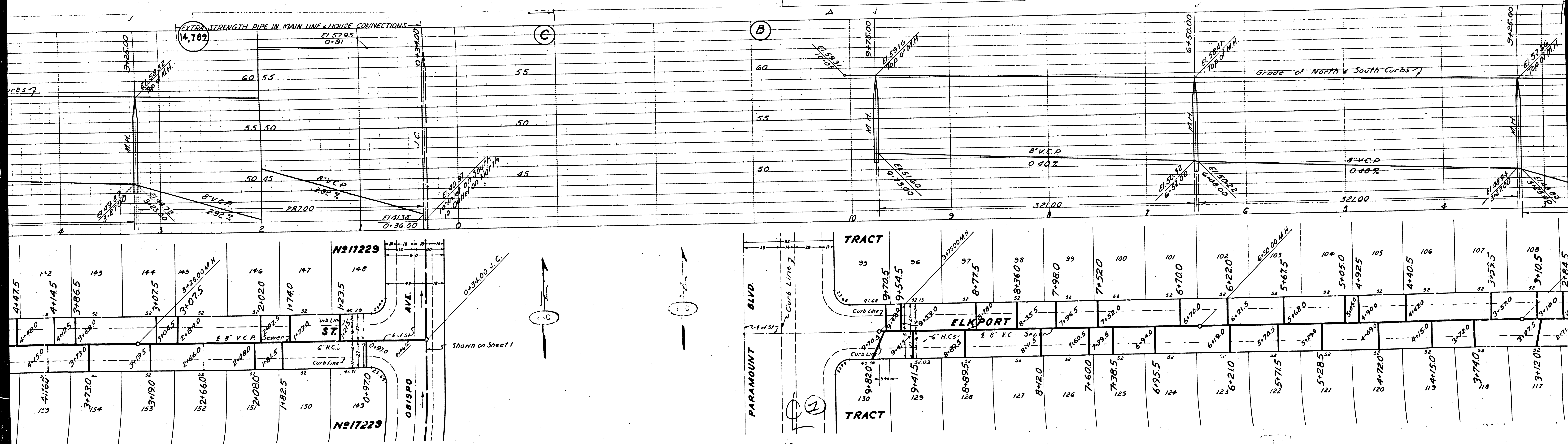
TRACT

TRACT

FAIRMAN

PARAMOUNT BLVD.





EXTRA STRENGTH PIPE IN MAIN LINE & HOUSE CONNECTIONS  
 (14.782)  
 E1 5795  
 0+91

8" V.C.P.  
 0.40%

8" V.C.P.  
 0.40%

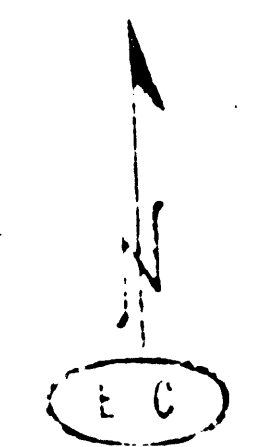
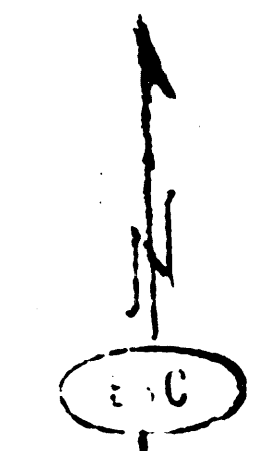
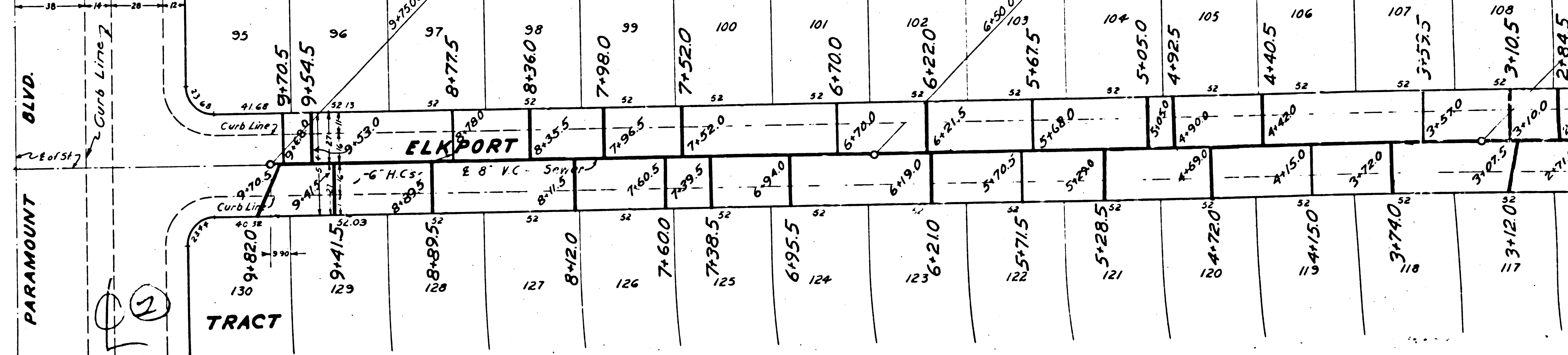
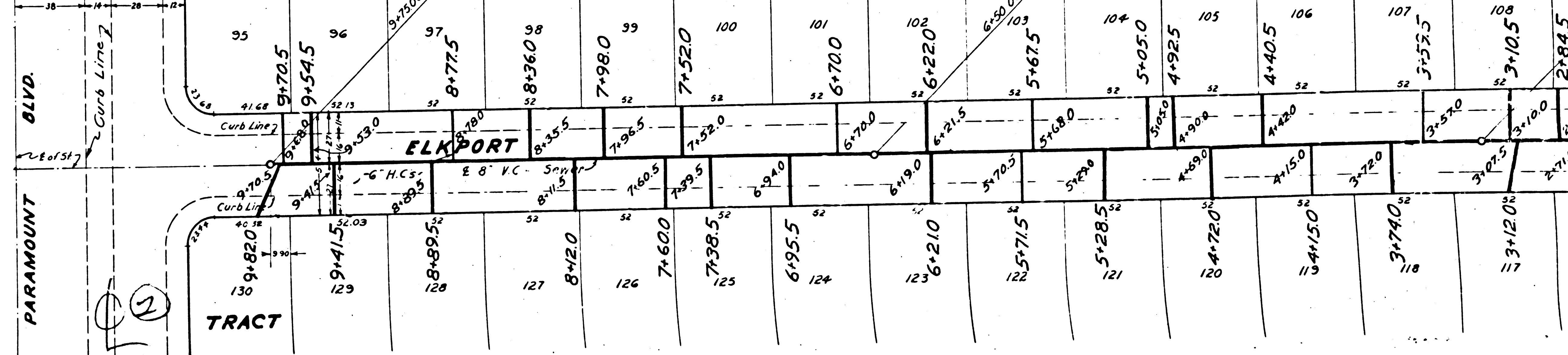
N<sup>o</sup> 17229

N<sup>o</sup> 17229

TRACT

TRACT

ELKHART

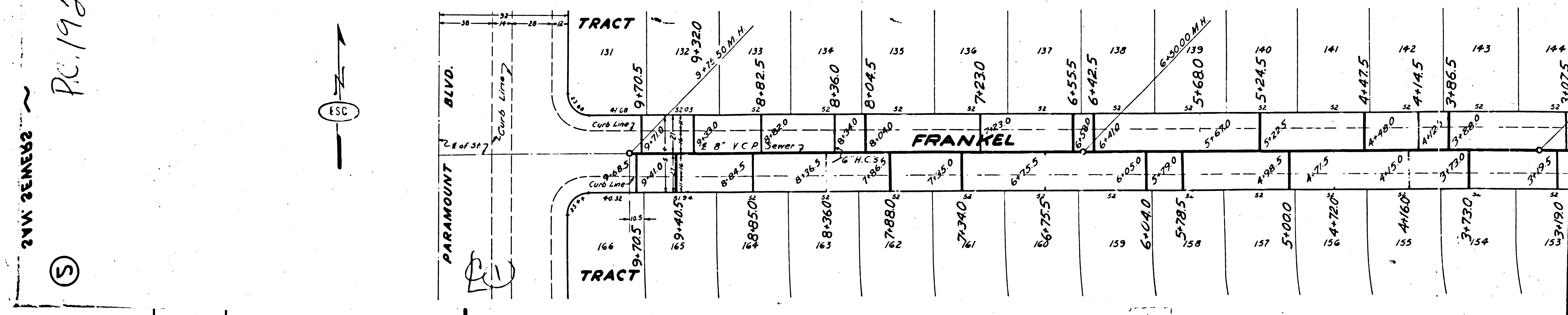
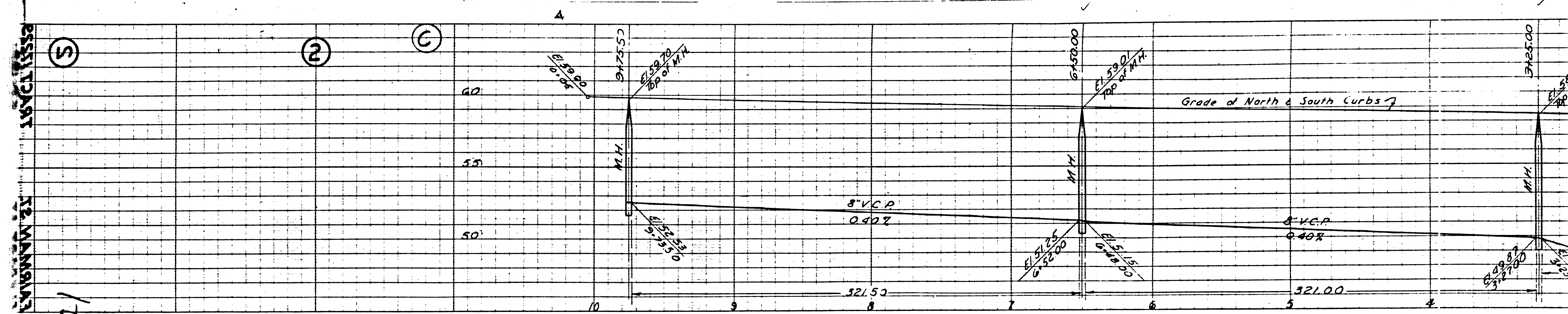


Shown on Sheet 1

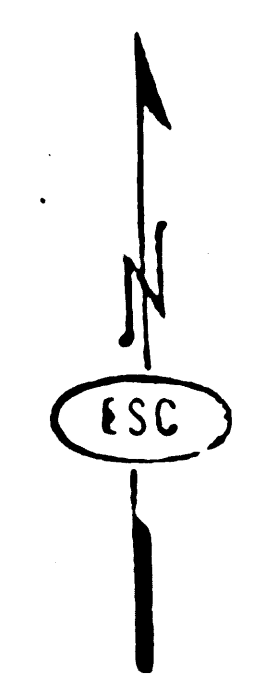
OBISPO AVE.

PARAMOUNT BLVD.

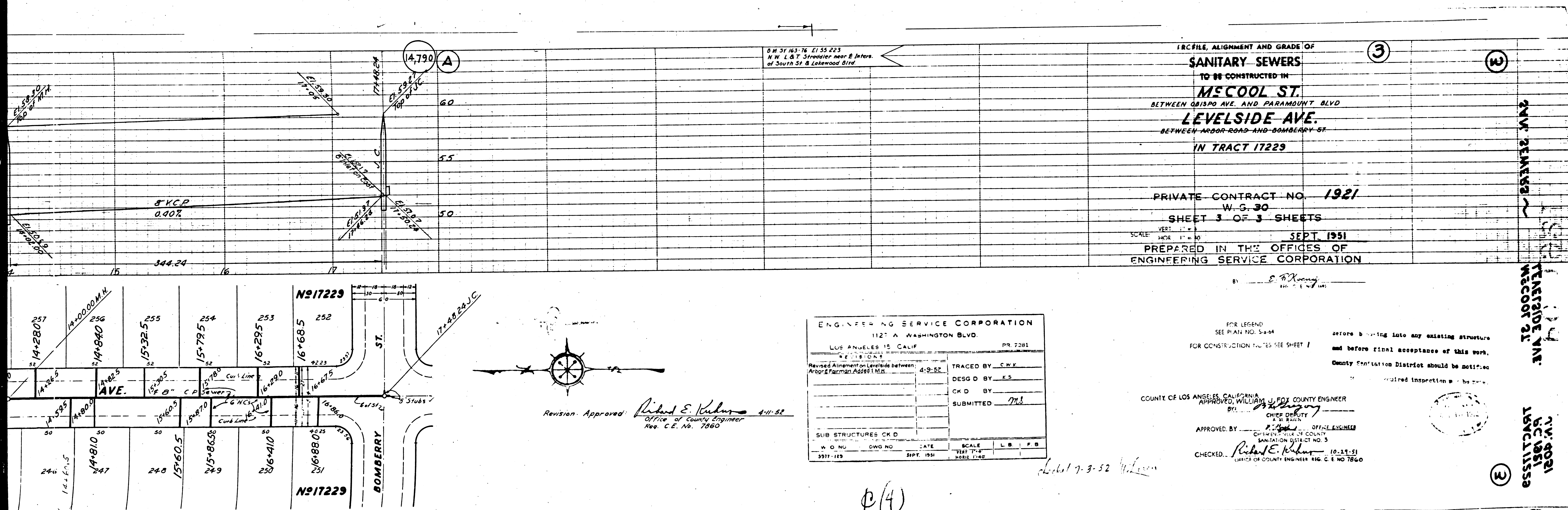
Grade of North & South Curbs



PC. 1921







PROFILE, ALIGNMENT AND GRADE OF  
**SANITARY SEWERS**  
 TO BE CONSTRUCTED IN  
**MCCOOL ST.**  
 BETWEEN OBISPO AVE. AND PARAMOUNT BLVD.  
**LEVELSIDE AVE.**  
 BETWEEN ARBOR ROAD AND BOMBERRY ST.  
 IN TRACT 17229

PRIVATE CONTRACT NO. 1921  
 W. G. 30  
 SHEET 3 OF 3 SHEETS  
 SEPT. 1951  
 PREPARED IN THE OFFICES OF  
 ENGINEERING SERVICE CORPORATION

ENGINEERING SERVICE CORPORATION			
1127 A WASHINGTON BLVD.			
LOS ANGELES 15 CALIF.		PR. 2381	
REVISIONS			
Revised Alignment or Levels between:	4-9-52	TRACED BY:	C.W.K.
Arbor & Fairman Addition M.M.		DESIGNED BY:	E.S.
		CHECKED BY:	
		SUBMITTED:	M.S.
SUB STRUCTURES CHECKED			
W. O. NO.	DWG. NO.	DATE	SCALE
5917-129		SEPT. 1951	VERT. 1" = 4' HORIZ. 1" = 40'

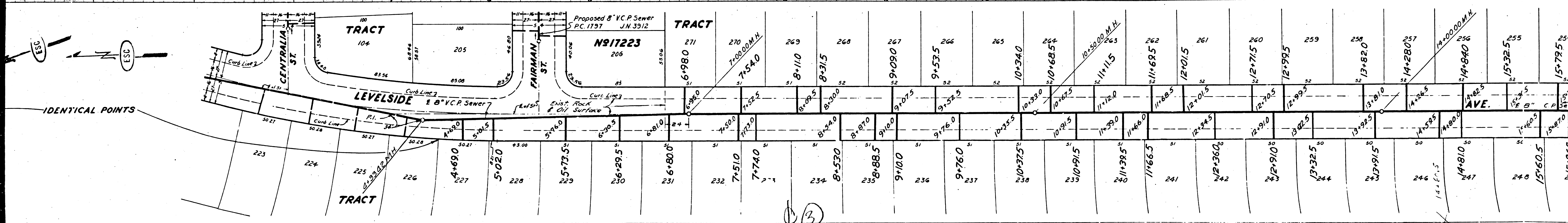
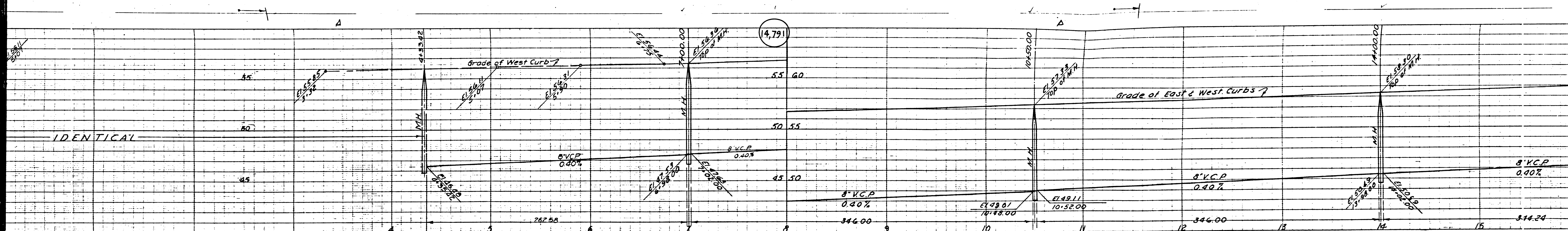
Revision Approved: *Richard E. Kuhn* 4-11-52  
 Office of County Engineer  
 Res. C.E. No. 7860

FOR LEGEND SEE PLAN NO. S-64  
 FOR CONSTRUCTION NOTES SEE SHEET 1  
 before bearing into any existing structure  
 and before final acceptance of this work.  
 County Sanitation District should be notified.  
 Required inspection by the same.

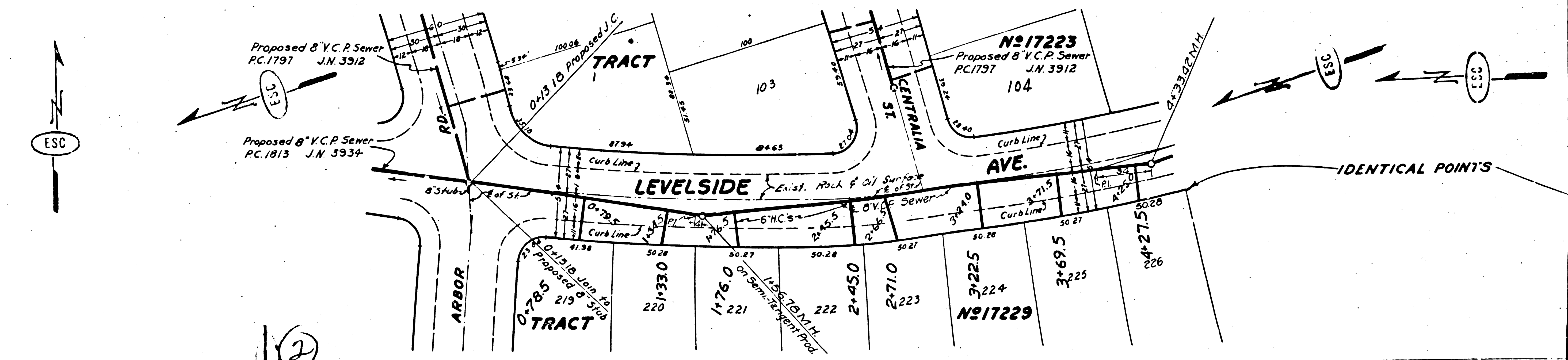
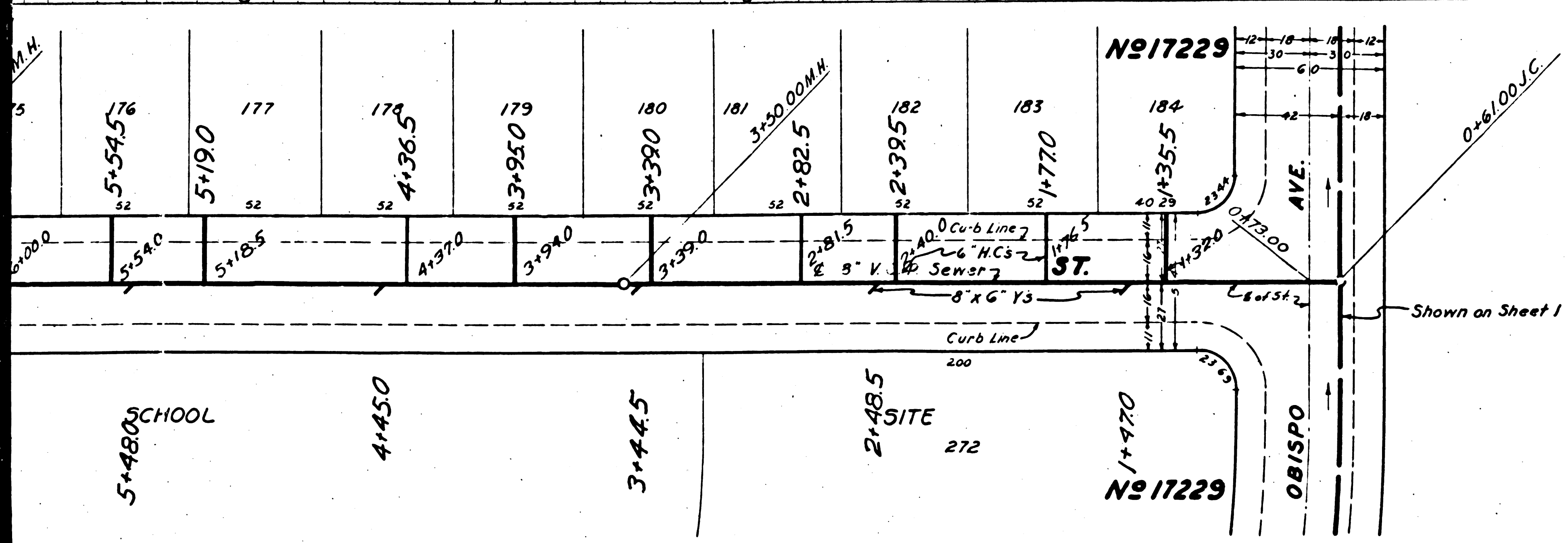
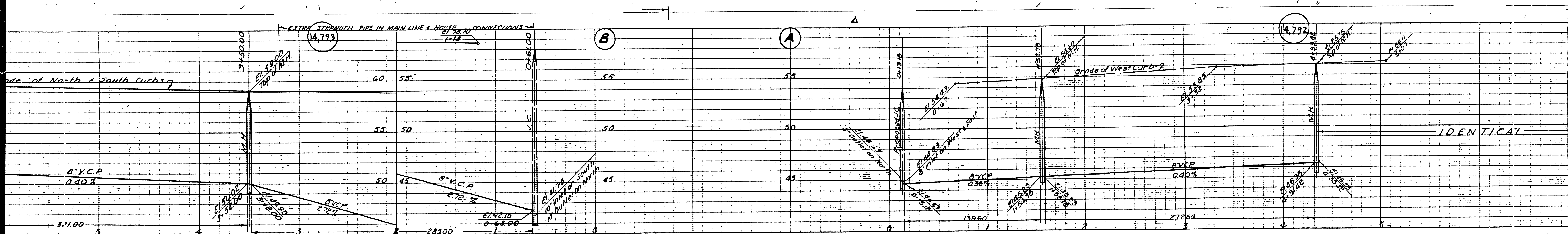
COUNTY OF LOS ANGELES, CALIFORNIA  
 APPROVED: *William J. Fox* COUNTY ENGINEER  
 BY: *J. H. Boyd* CHIEF DEPUTY  
 APPROVED BY: *Richard E. Kuhn* OFFICE ENGINEER  
 CHECKED: *Richard E. Kuhn* 10-15-51  
 CHIEF OF COUNTY ENGINEER RES. C. E. NO. 7860

LEVELSIDE AVE.  
 MCCOOL ST.  
 BOMBERRY ST.

④



(3)



LOTS 272 & 273 IS SCHOOL SITE NO 3

(2)

WE COOL THE  
KENEYSIDE NINE

③

244' 2EMES2 ~

PC 1921

③



①

