

TRACT NO 12551

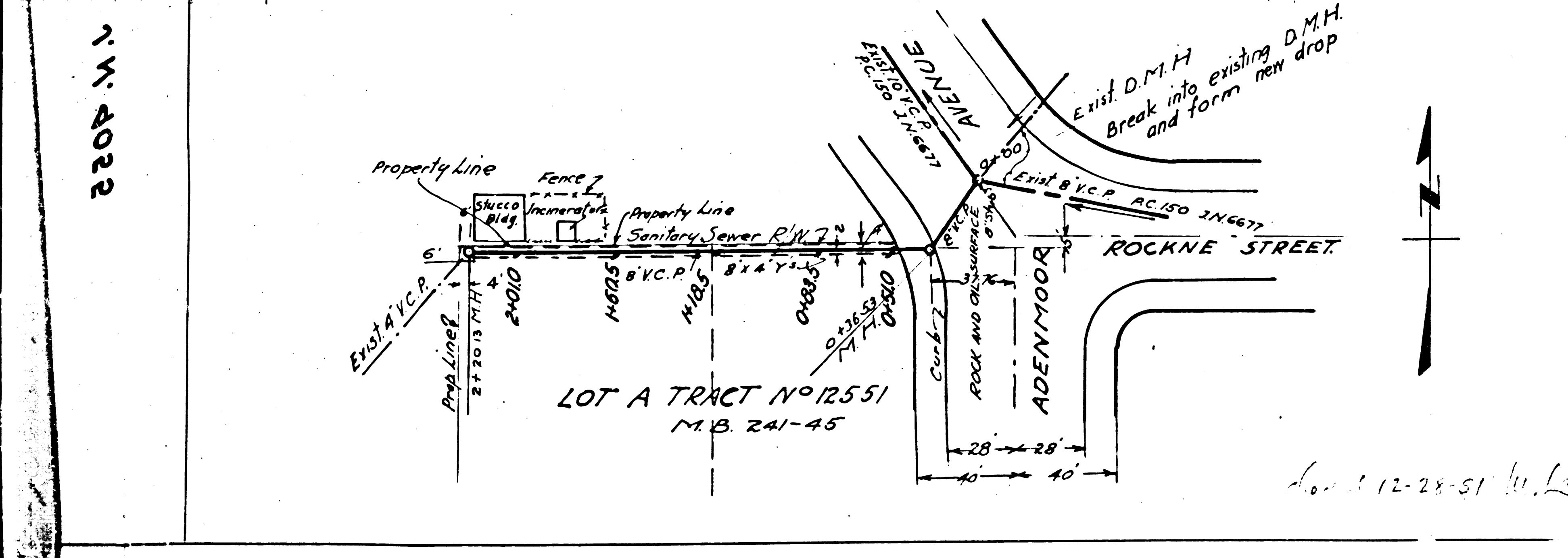
**PROFILE ALIGNMENT AND GRADE OF
SANITARY SEWERS**
TO BE CONSTRUCTED IN
SANITARY SEWER RIGHT OF WAY
IN LOT 1 BLOCK A TRACT NO 12551
PALMATA CONTRACT NO. 1326
W'S NO. 33
SHEET 1 of 1 SHEET

Scale: $\frac{1}{4"} = 10'$ HORIZ. $\frac{1}{4"} = 10'$ VERT.

PREPARED IN THE OFFICES OF
STON ADAMS
By **Gen. N. Adams**
Reg. CE 132.
For Legend
See Plan No. 54 64.

NOTE:
Use L.A. County Standard Manhole Frame & Cover 54.119.
Use Standard Strength Vitrified Clay Pipe (except for notes).
Use Cement Mortar for all Vitrified Clay Pipe Joints.
Resurface all Trenches in Paved Areas to meet Los Angeles County Road Department Requirements in accordance with Permit.
Construct House Connections with Invert at Property Line (5 feet below Curb Grade except as noted). Excavate 10 feet of Sewer at points of interference with poles per 5-4-156. All Structures shall be Brick Sewer Structures. See Plan. Capstack Top of all Structures in Right of Way 6" in Trenches above Finish Grade.

NOTE: No representative of the County Engineer will survey or lay-out any portion of the work.
The Owner or his authorized representative shall furnish the County Engineer with grade sheets and Stations of all House Connections and Branches and shall provide stakes for them at their proper locations with stationing plainly marked. Any changes in location shall be requested in writing by the Owner or his representative.
No revisions shall be made in these Plans without the approval of the County Engineer.



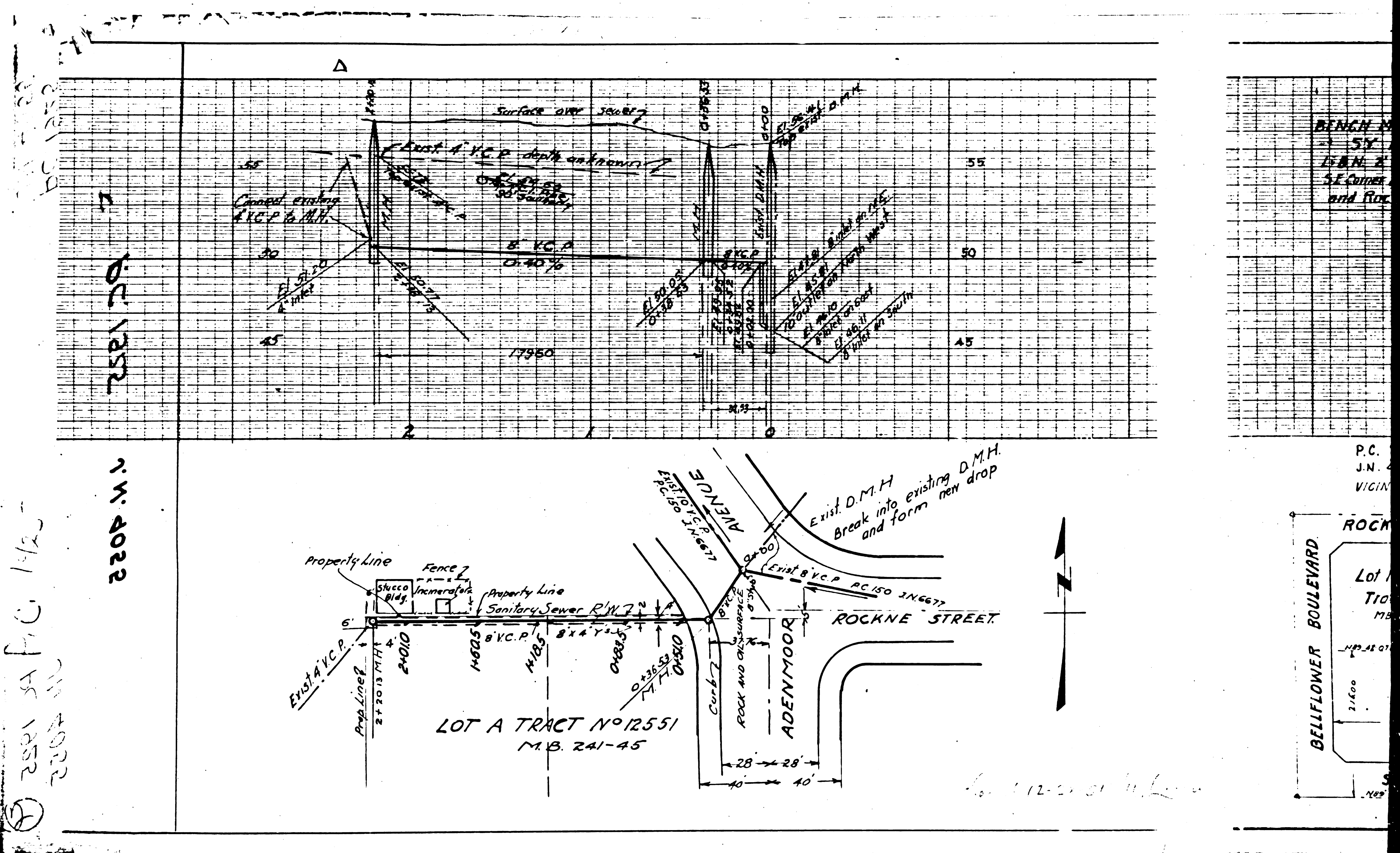
P.C. 1925
J.N. 4055
VICINITY MAP 1:100'

NOTE:
Provide Stakes on the Property Lines or on the Property Lines produced at right angles to the Sewer Line at the center line of each Manhole.
Stoppers to be installed with Joint Compound by the Manufacturer at his Plant Specs. 31, 32.

Approval of this Plan by the County Engineer does not constitute a representation as to the accuracy of the location of the existing or proposed underground Utility, Pipe or Structure within the limits of this Project.

COUNTY OF LOS ANGELES, CALIFORNIA
WILLIAM J. FOX
Approved: County Engineer Approved by **A.M. BANNING** OFFICE ENGINEER
By **Richard E. Kubler** CHIEF DEPUTY SANITATION DISTRICT NO. 3
Checked by **Richard E. Kubler** 11-7-51
Office of County Engineer, Reg. CE No 7860

NOTE:
Grades to which this Improvement is to be constructed are shown on Plans and Profile. Grade points for top of Curb, center line of Street or center line of Alley are shown by circles on Profile. At all points between designated points on grade shall be established so as to conform to a straight line drawn between said designated points. Elevations are in feet above U.S.G.S. Datum Plane or Mean Sea Level.
This drawing and the data hereon are hereby made a part of the Specifications. Work shall be constructed according to Specifications on file in the office of the County Engineer and shall be prosecuted only in the presence of the County Engineer.
Before work can be started the contractor must obtain a Permit to excavate in County Streets from the L.A. County Road Dept. 211 S. Main Street, and make a deposit with the County Engineer \$25 L.A. County Engineering Bldg. sufficient to cover the cost of construction inspection and record Plans.



2551 SA FIG 1/25
 2002
 W 4022

W 4022

BENCH
 SY
 S.E. Corner
 and Rock

P.C.
 J.N.
 VIGIN

ROCK
 Lot
 Tra
 M.B.
 241-45
 2100
 1000
 1000
 1000

12-21-01