

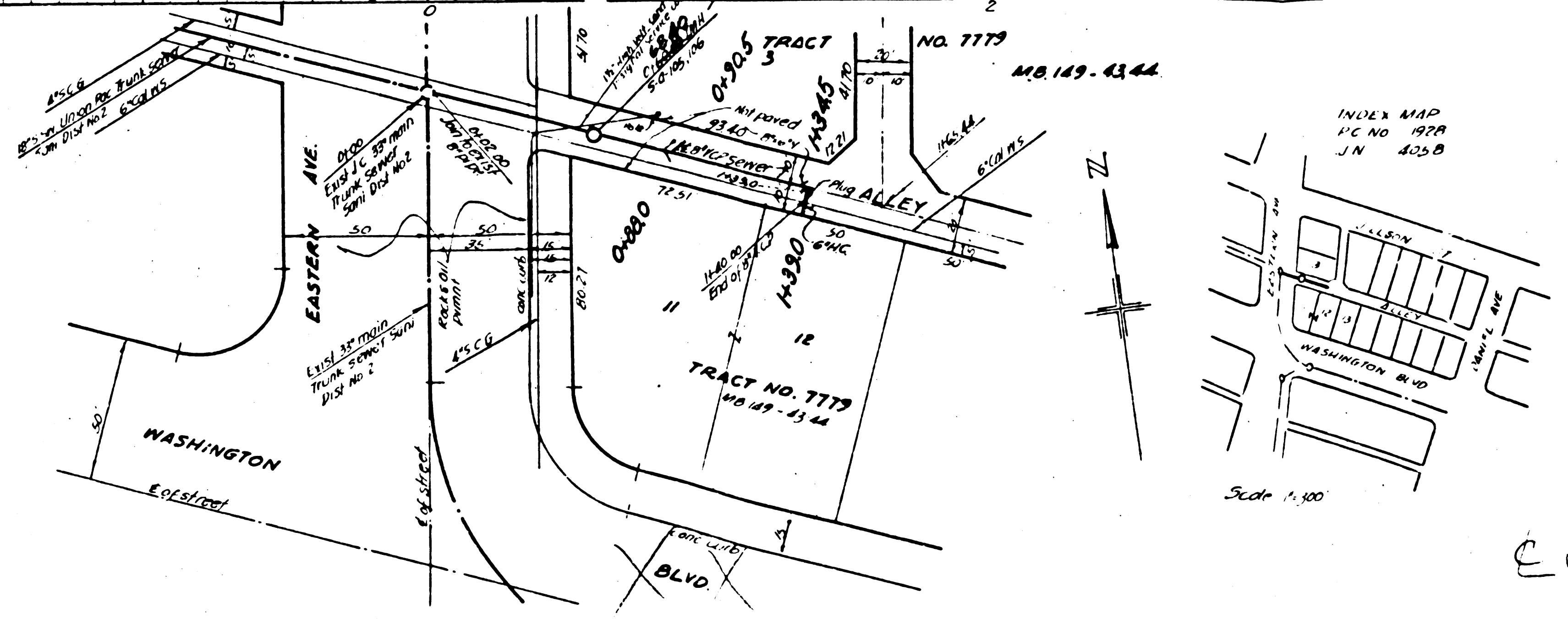
**PROFILE, ALIGNMENT, AND GRADE OF
SANITARY SEWERS
TO BE CONSTRUCTED IN
FIRST ALLEY NORTH OF WASHINGTON BOULEVARD
BETWEEN EASTERN AVENUE AND A POINT 140 FT WESTERLY THEREFROM**

PRIVATE CONTRACT NO. 1929
M.S. 36
ONE SHEET
OCTOBER 1951

SCALE:
VERTICAL 1" = 4'
HORIZONTAL 1" = 40'

Prepared under the supervision of
C. J. Sullivan
C. J. Sullivan, P. E. No. 10,000

1. Use standard manhole frames and cover
2. Use extra strength pipe as noted
3. Use extra manhole for all vertical lift pipe joints
4. Reinforce all trench within paved area to meet Los Angeles County Dept. specifications in the distance with permit
5. All structures shall be brick frame structures 5'-0" x 1'-0"
6. Provide sumps on the property lines at property lines produced at right angles to the sewer line of the house and of each manhole
No responsibility of the County Engineer will be assumed for any work
The owner of the Authorized Private Sanitary Sewer shall furnish the County Engineer with grade sheets and drawings of all house connections as well as branches and shall provide stakes for them at their proper locations with stakepins plainly marked
Any change of location shall be requested in writing by the owner, who represents and agrees to be satisfied with and approved by the County Engineer at his plan sheet No. 33-45
Concrete manholes to be not less than 2' in depth with concrete and 3" x 3" x 1/2" brick wall pipe and logs per spec. Sec. 48



FOR LEGEND SEE PLAN S O 64

Grades to which this sewerment is to be constructed are shown on plans and profile. At all points between designated points the grade shall be established so as to conform to a straight line drawn between said designated points.
Elevations are in feet above U.S. datum or mean sea level.
This drawing and the work hereon are hereby made a part of the specifications.
Work shall be constructed according to specifications on file in the office of the County Engineer and shall be prosecuted only in the presence of the County Engineer.
Before work can be started, the contractor must obtain a permit to excavate in County sheets from the L.A. County Civil Dept. 108 in Section 51, and make a deposit with the County Engineer, 800 L.A. County Engineering Bldg., sufficient to cover the cost of instruction, inspection and record plans.
Approval of this plan by the County of Los Angeles does not constitute a representation as to the accuracy of the location of or the existence or non-existence of any underground utility, pipe or structure within the limits of this project.

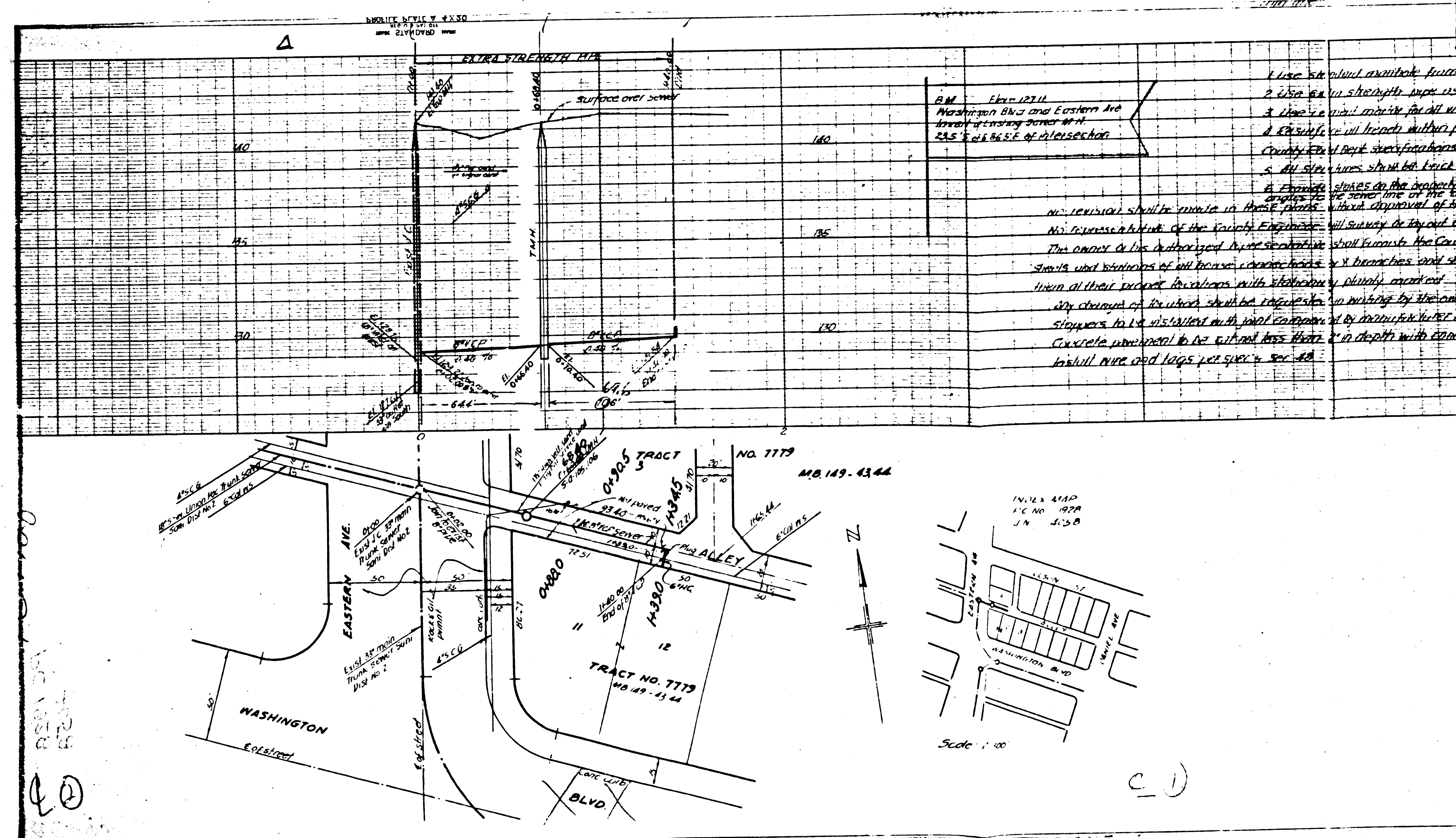
WILLIAM J. FOX, COUNTY ENGINEER
Approved by *[Signature]*
CHIEF DEPUTY

COUNTY OF LOS ANGELES, CALIFORNIA
Approved by *[Signature]*
Chief Engineer of County San. District No. 2

Checked by *[Signature]* 10-12-51
Office of the County Engineer
Reg. C. E. No. 6412

before breaking into any existing structure
and before final acceptance of this work,
County Sanitation District should be notified
in order that required inspection may be made.

DO NOT WRITE IN THESE SPACES



Close to plant available for
 2. Use as in strength paper
 3. Use as in strength paper
 4. Use as in strength paper
 5. Use as in strength paper
 6. Use as in strength paper
 7. Use as in strength paper
 8. Use as in strength paper
 9. Use as in strength paper
 10. Use as in strength paper
 11. Use as in strength paper
 12. Use as in strength paper
 13. Use as in strength paper
 14. Use as in strength paper
 15. Use as in strength paper
 16. Use as in strength paper
 17. Use as in strength paper
 18. Use as in strength paper
 19. Use as in strength paper
 20. Use as in strength paper
 21. Use as in strength paper
 22. Use as in strength paper
 23. Use as in strength paper
 24. Use as in strength paper
 25. Use as in strength paper
 26. Use as in strength paper
 27. Use as in strength paper
 28. Use as in strength paper
 29. Use as in strength paper
 30. Use as in strength paper
 31. Use as in strength paper
 32. Use as in strength paper
 33. Use as in strength paper
 34. Use as in strength paper
 35. Use as in strength paper
 36. Use as in strength paper
 37. Use as in strength paper
 38. Use as in strength paper
 39. Use as in strength paper
 40. Use as in strength paper
 41. Use as in strength paper
 42. Use as in strength paper
 43. Use as in strength paper
 44. Use as in strength paper
 45. Use as in strength paper
 46. Use as in strength paper
 47. Use as in strength paper
 48. Use as in strength paper
 49. Use as in strength paper
 50. Use as in strength paper
 51. Use as in strength paper
 52. Use as in strength paper
 53. Use as in strength paper
 54. Use as in strength paper
 55. Use as in strength paper
 56. Use as in strength paper
 57. Use as in strength paper
 58. Use as in strength paper
 59. Use as in strength paper
 60. Use as in strength paper
 61. Use as in strength paper
 62. Use as in strength paper
 63. Use as in strength paper
 64. Use as in strength paper
 65. Use as in strength paper
 66. Use as in strength paper
 67. Use as in strength paper
 68. Use as in strength paper
 69. Use as in strength paper
 70. Use as in strength paper
 71. Use as in strength paper
 72. Use as in strength paper
 73. Use as in strength paper
 74. Use as in strength paper
 75. Use as in strength paper
 76. Use as in strength paper
 77. Use as in strength paper
 78. Use as in strength paper
 79. Use as in strength paper
 80. Use as in strength paper
 81. Use as in strength paper
 82. Use as in strength paper
 83. Use as in strength paper
 84. Use as in strength paper
 85. Use as in strength paper
 86. Use as in strength paper
 87. Use as in strength paper
 88. Use as in strength paper
 89. Use as in strength paper
 90. Use as in strength paper
 91. Use as in strength paper
 92. Use as in strength paper
 93. Use as in strength paper
 94. Use as in strength paper
 95. Use as in strength paper
 96. Use as in strength paper
 97. Use as in strength paper
 98. Use as in strength paper
 99. Use as in strength paper
 100. Use as in strength paper