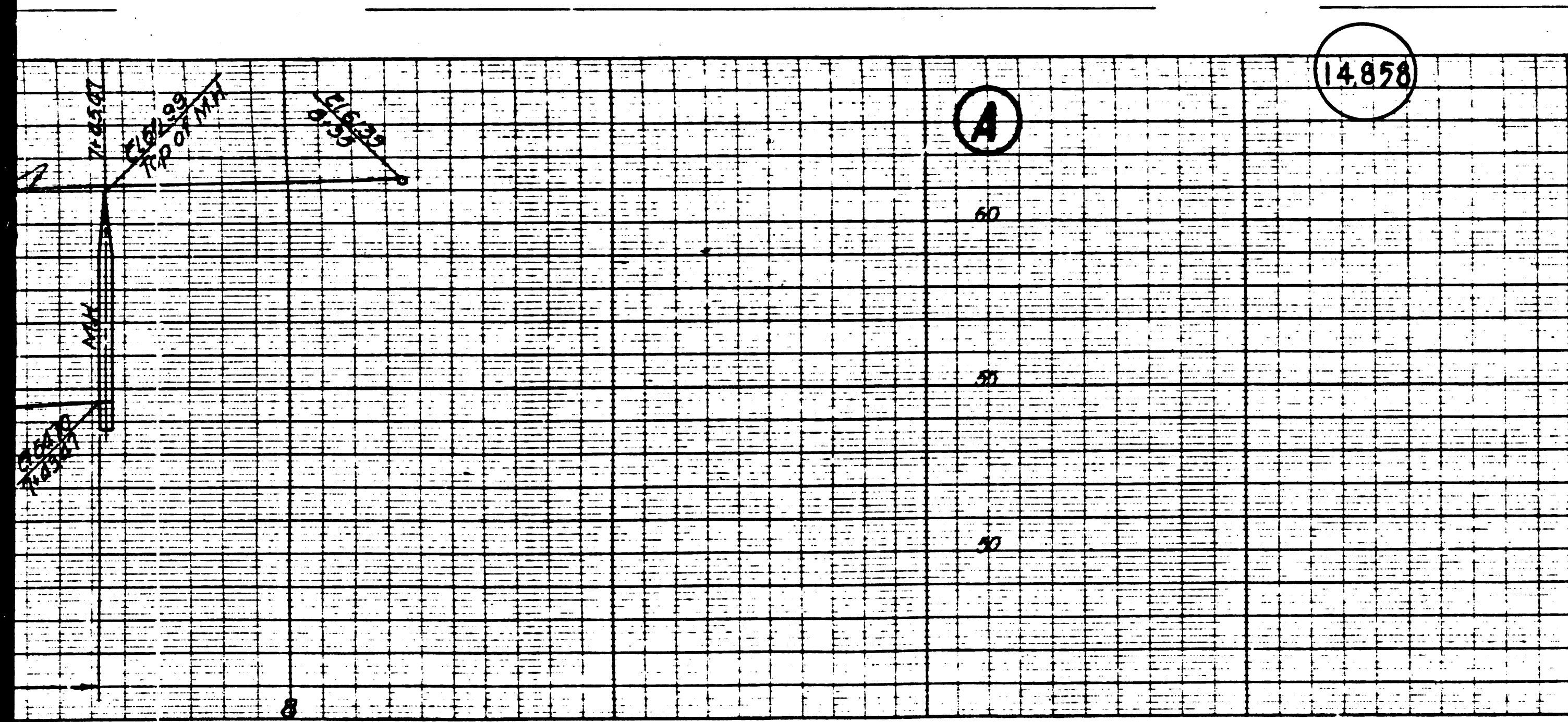
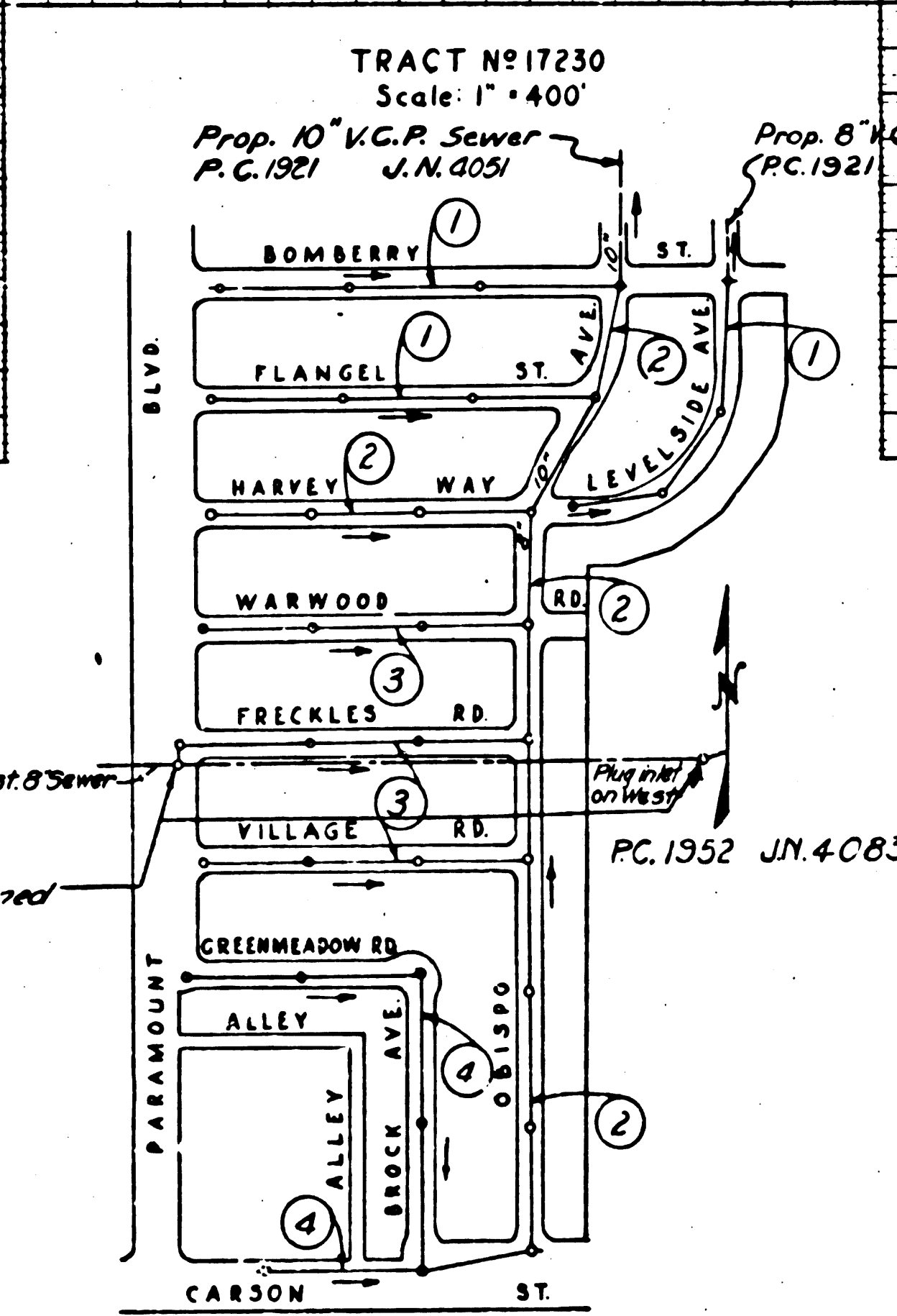
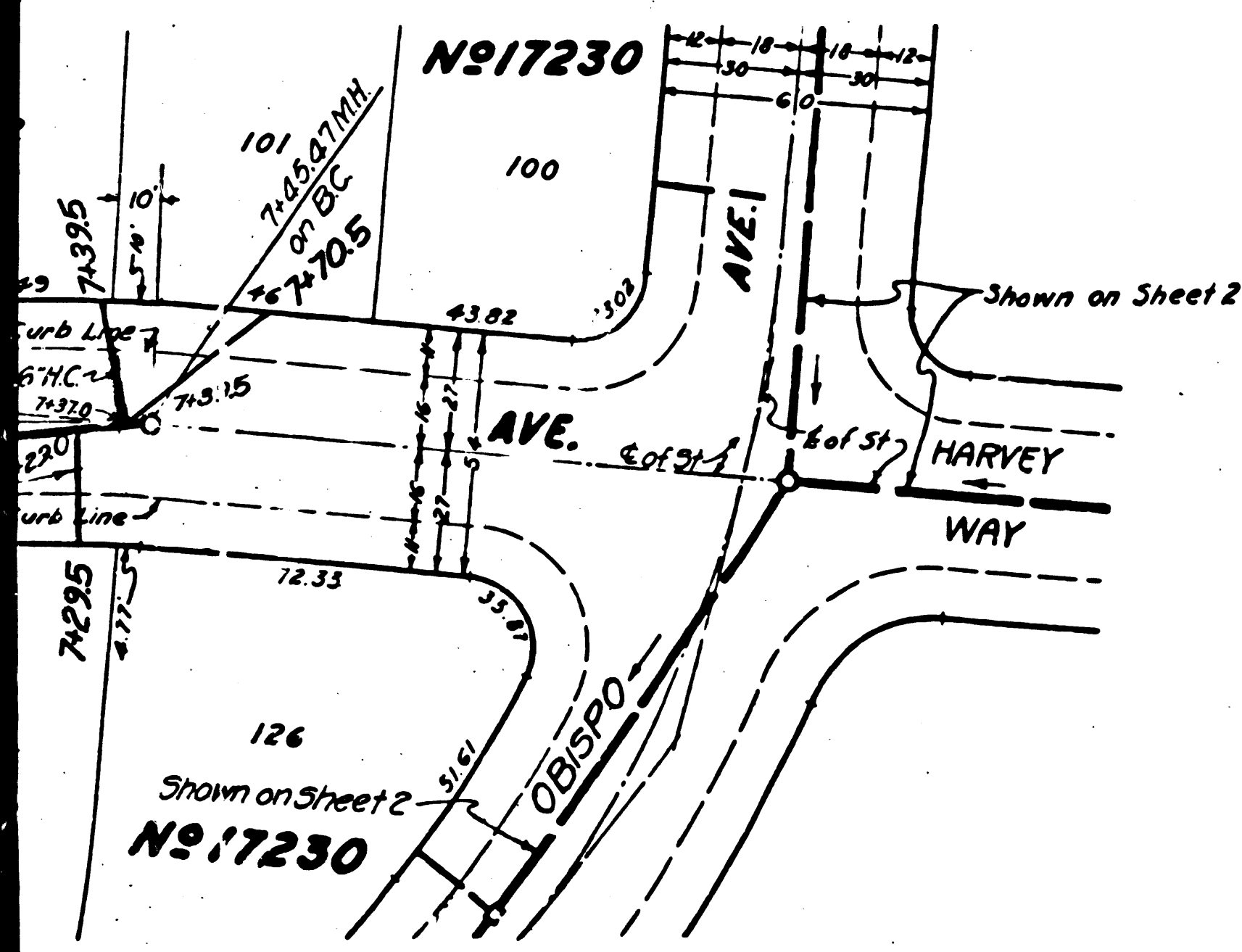


Trim Line



BELFLOWER

14.858
S.M. SY 103 N. 21.55.223
N.W. L. & T. Straddler near & Inter.
South St. & Lakewood Blvd.



- NOTE:
1. NO REPRESENTATIVE OF THE COUNTY ENGINEER WILL SURVEY OR LAY OUT ANY PORTION OF THE WORK.
2. THE OWNER OR HIS AUTHORIZED REPRESENTATIVE SHALL FURNISH THE COUNTY ENGINEER WITH THREE (3) SETS OF STATIONING FOR ALL HOUSE CONNECTIONS AND BRANCHES AND SHALL FURNISH STAKES FOR THEM AT THEIR PROPER LOCATIONS WITH STATIONING PLANTS PLACED IN WRITING BY THE OWNER FOR HIS REPRESENTATIVE.
3. NO REVISIONS SHALL BE MADE IN THESE PLANS WITHOUT APPROVAL OF THE COUNTY ENGINEER.
4. USE STANDARD MANHOLE FRAMES AND COVERS. S-112.
5. USE STANDARD STRENGTH PIPE EXCEPT AS NOTED.
6. USE CEMENT MORTAR FOR ALL WITHEED CLAY PIPE JOINTS.
7. RESURFACE ALL TRENCH WITHIN RAISED AREA TO MEET L.A. COUNTY ROAD DEPT. REQUIREMENTS.
8. ENGAGE FOUR FEET OF SEWER AT POINTS OF INTERFERENCE WITH POLES. S-118.
9. HOUSE CONNECTIONS TO BE CONSTRUCTED WITH INVERT AT PROPERTY LINE 3' FEET BELOW CURB GRADE.
10. ALL STRUCTURES SHALL BE BRICK SEWER STRUCTURES UNLESS OTHERWISE SHOWN.
11. PROVIDE STAKES ON THE PROPERTY LINES OR PROPERTY CORNERS AT RIGHT ANGLES TO THE SEWER LINE AT THE CENTER LINE OF EACH MANHOLE.
12. STAKES TO BE INSTALLED WITH JOINT COMPOUND BY MANUFACTURER AT HIS PLAN. SPECS. SEC. 35.40.
13. CONCRETE PAVEMENT TO BE CUT NOT LESS THAN 2" IN DEPTH WITH CONCRETE SAW. SPECS. SEC. 68.
14. WIRE & TAGS REQUIRED ON BLIND Y'S PER SPECS. SEC. 4-B.

**PROPOSED ALIGNMENT AND GRADE OF
SANITARY SEWERS
TO BE CONSTRUCTED IN
LEVELSIDE AVE.
BETWEEN BOMBERRY ST AND OBispo AVE.
BOMBERRY ST.
BETWEEN LEVELSIDE AVE AND PARAMOUNT BLVD.
FLANGEL ST.
BETWEEN OBISPO AVE AND PARAMOUNT BLVD.
IN TRACT N 17230**

PRIVATE CONTRACT NO. 1882
W. S. 30
SHEET 1 OF 4 SHEETS
DEC. 1951
PREPARED IN THE OFFICES OF
ENGINEERING SERVICE CORPORATION

ENGINEERING SERVICE CORPORATION
1127 A WASHINGTON BLVD
LOS ANGELES 15 CALIF. PR 7202

DESIGNED BY: EWK
CHECKED BY: _____
SUBMITTED: _____

DATE: 1951 SCALE: 1" = 40'

FOR LEGEND SEE PLAN NO. S-44

GRADES TO WHICH THIS IMPROVEMENT IS TO BE CONSTRUCTED ARE SHOWN ON PLANS AND PROFILES. THE POINTS FOR THE CENTER LINE OF STREET OR CENTER LINE OF ALLEY ARE SHOWN BY SECTION PROFILES. AT ALL POINTS BETWEEN DESIGNATED POINTS THE GRADE SHALL BE ESTABLISHED BY A LINE DRAWN AT RIGHT ANGLES TO THE CENTER LINE OF STREET OR ALLEY.

ELEVATIONS ARE IN FEET ABOVE U.S.G.S. DATUM, SEA LEVEL.

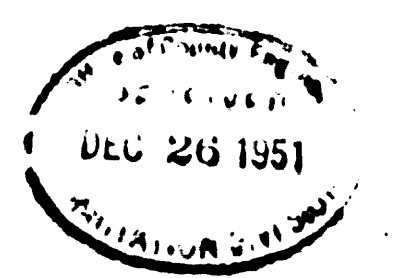
THIS DRAWING AND THE DATA HEREON ARE HEREBY MADE A PART OF THE SPECIFICATIONS.

WORK SHALL BE CONSTRUCTED ACCORDING TO SPECIFICATIONS ON FILE IN THE OFFICE OF THE COUNTY ENGINEER AND SHALL BE PROTECTED ONLY BY THE SEAL OF THE COUNTY ENGINEER.

BEFORE WORK CAN BE STARTED THE CONTRACTOR MUST OBTAIN A PERMIT TO EXCAVATE IN COUNTY STREETS FROM THE L.A. COUNTY ROAD DEPT. 108 W. 228 ST. AND MUST DEPOSIT WITH THE COUNTY ENGINEER \$25 COUNTY ENGINEERING BUILDING SUFFICIENT TO COVER THE COST OF CONSTRUCTION INSPECTION AND RECORD PLANS.

APPROVAL OF THIS PLAN BY THE OFFICE OF LOS ANGELES DOES NOT CONSTITUTE A REPRESENTATION AS TO THE ACCURACY OF THE LOCATION OF OR THE EXISTENCE OF ANY UNDERGROUND UTILITY, PIPE OR STRUCTURE WITHIN THE LIMITS OF THIS PROJECT. THIS NOTICE APPLIES TO ALL SHEETS.

COUNTY OF LOS ANGELES, CALIFORNIA
APPROVED, WILLIAM J. JOE, COUNTY ENGINEER
CHIEF DEPUTY ENGINEER
OFFICE ENGINEER
COUNTY ENGINEER OF COUNTY
SANITATION DISTRICT NO. 3
CHECKED, Richard E. Kuhn, 12-11-51
OFFICE OF COUNTY ENGINEER, REG. C. E. NO. 7660



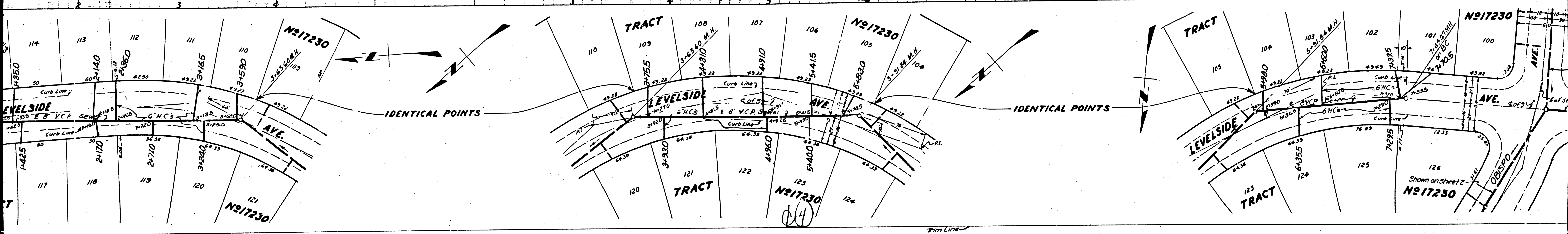
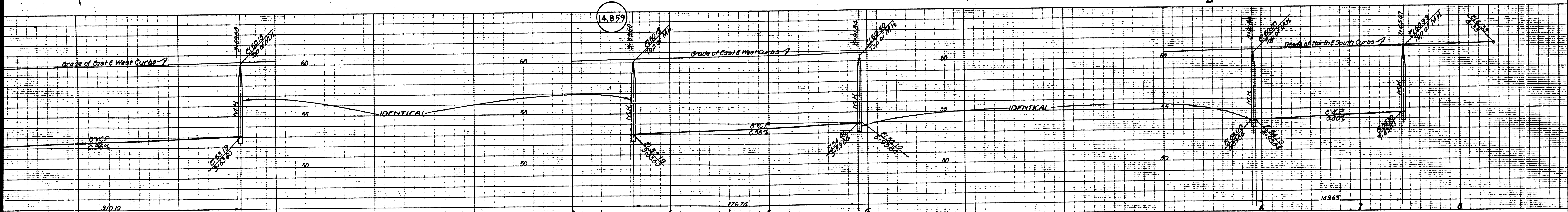
BOMBERRY ST.
FLANGEL ST.
PARAMOUNT BLVD.
LEVELSIDE AVE.
N 17230

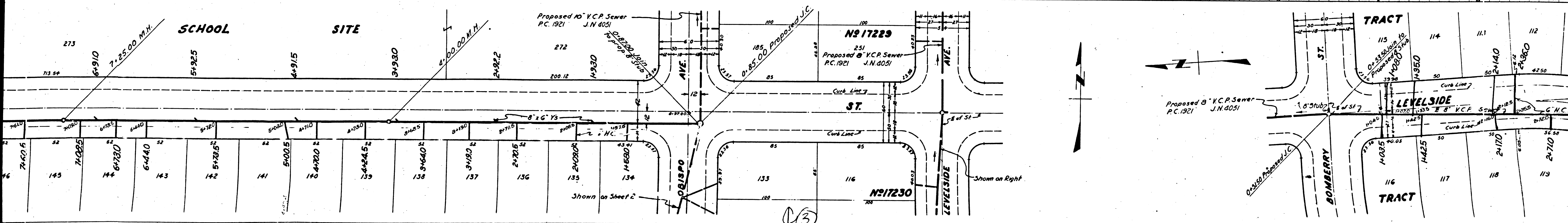
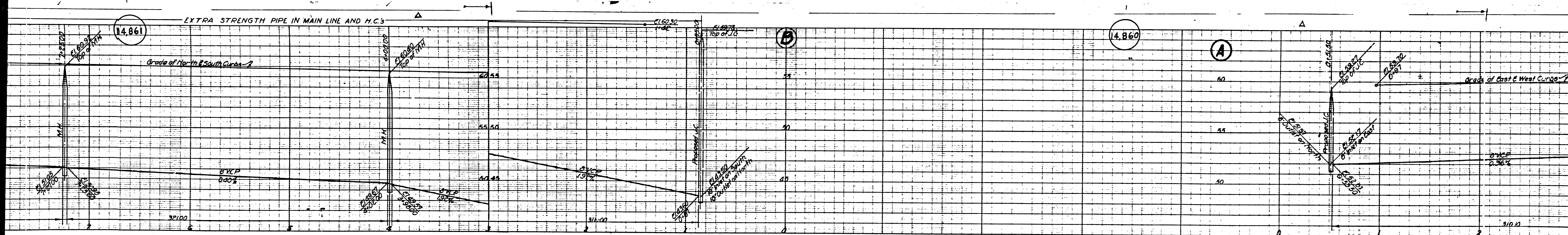
W. S. 30
PC 1882
SHEET 1 OF 4

(15)

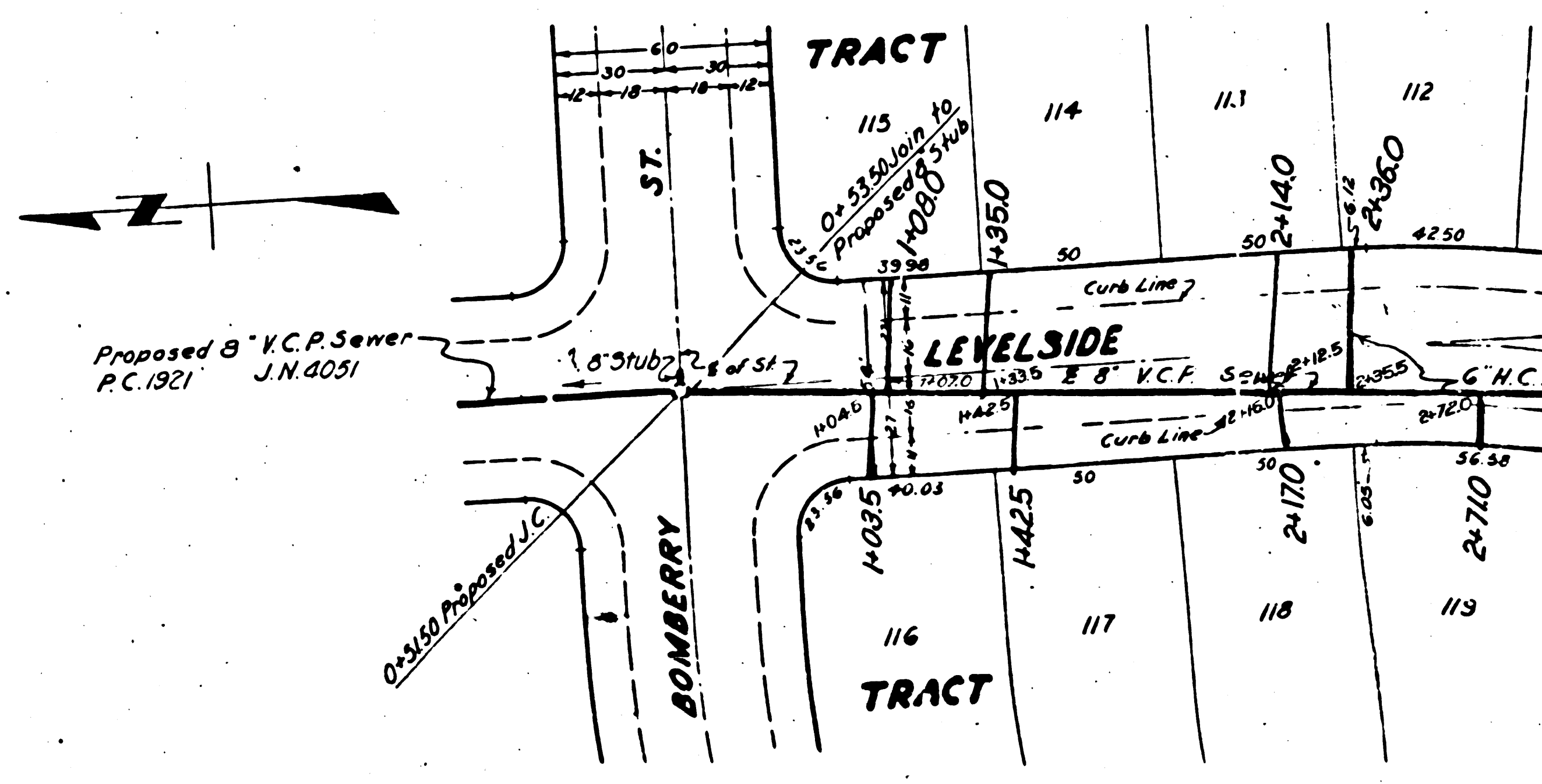
check 9-17-52 Kuhn

824

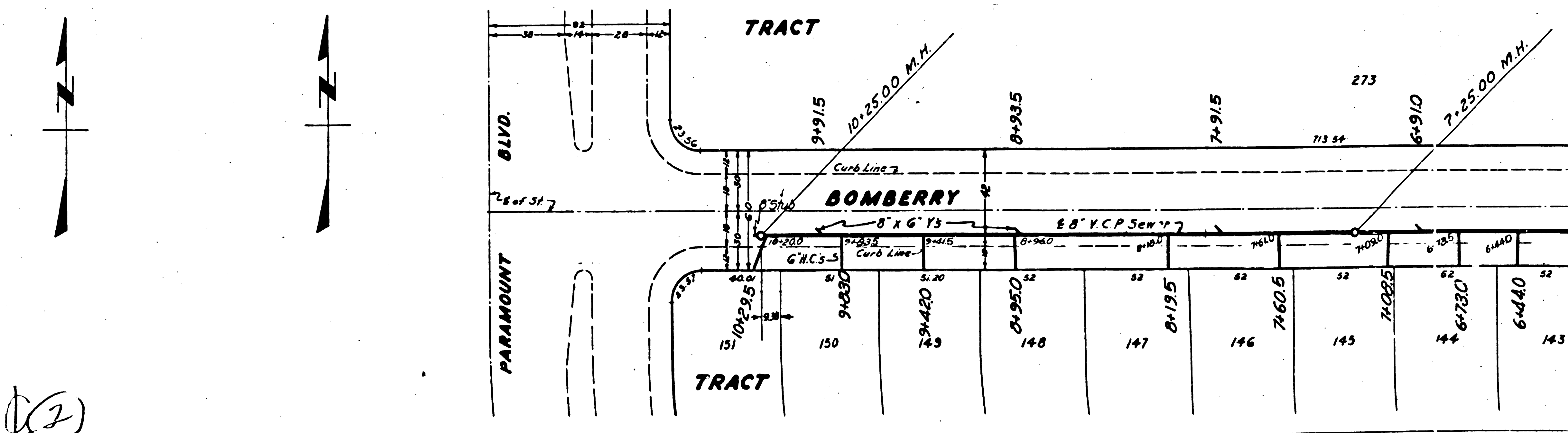
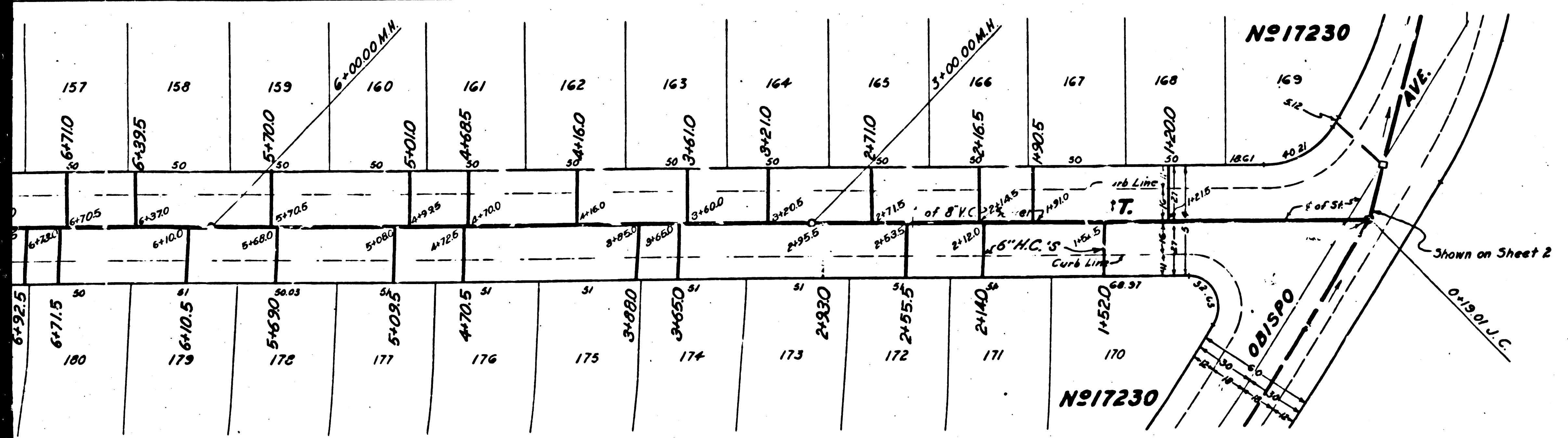
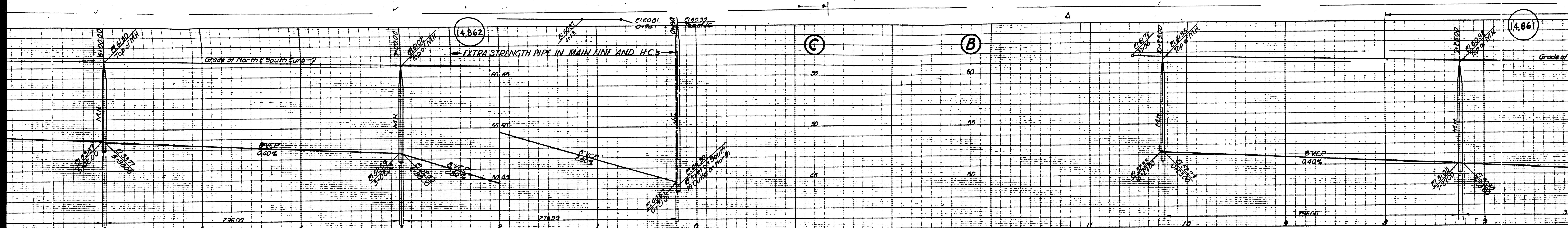




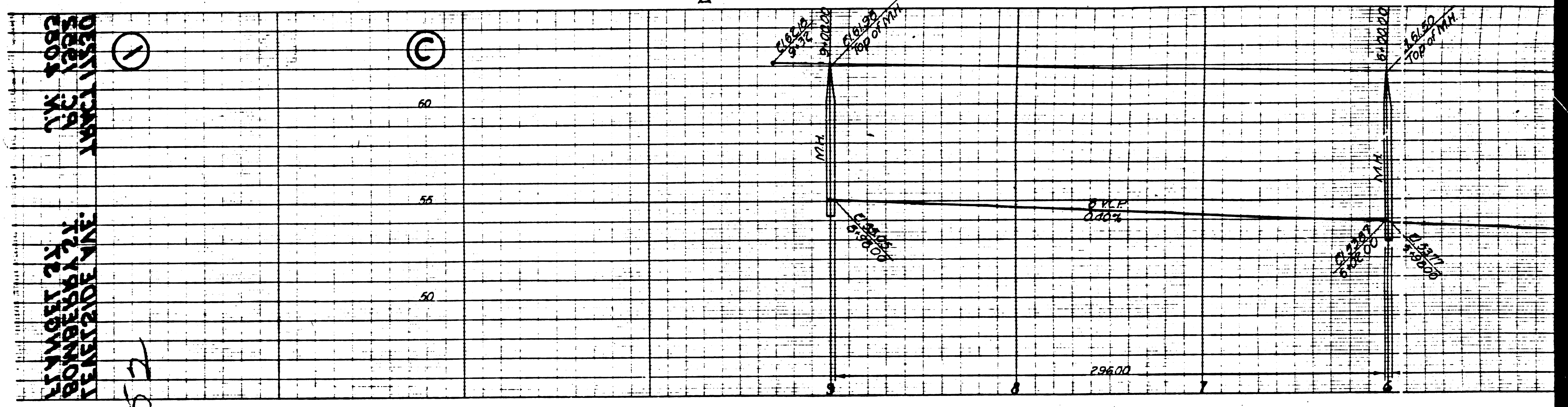
Note: Lots 273 & 272 are School site



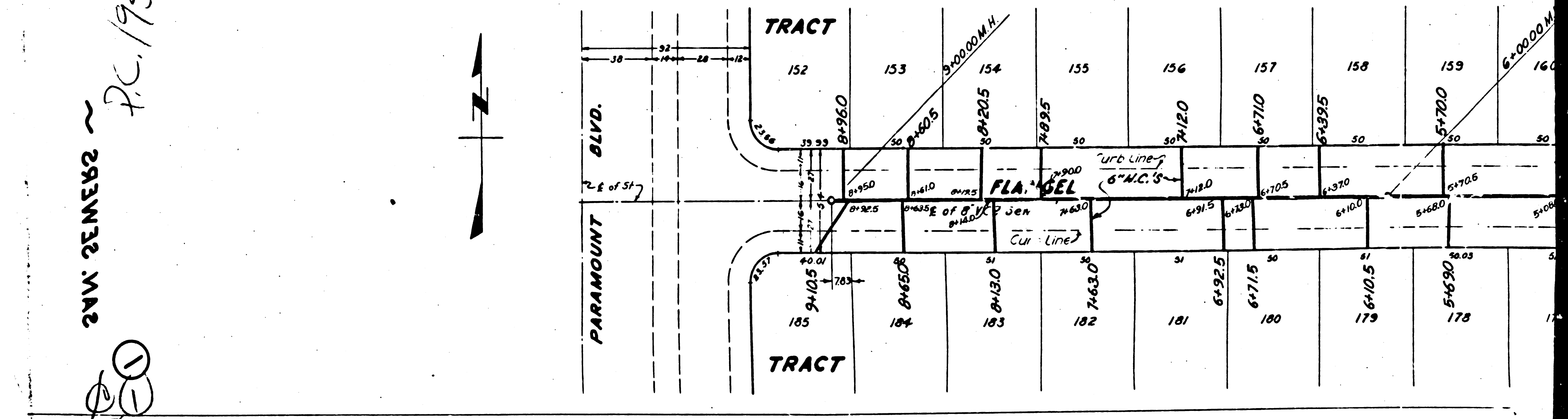
13



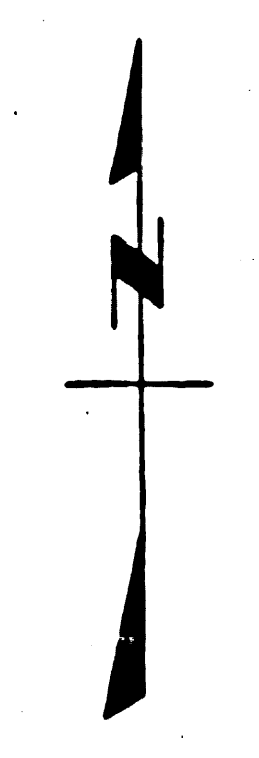
Note: Lots 27



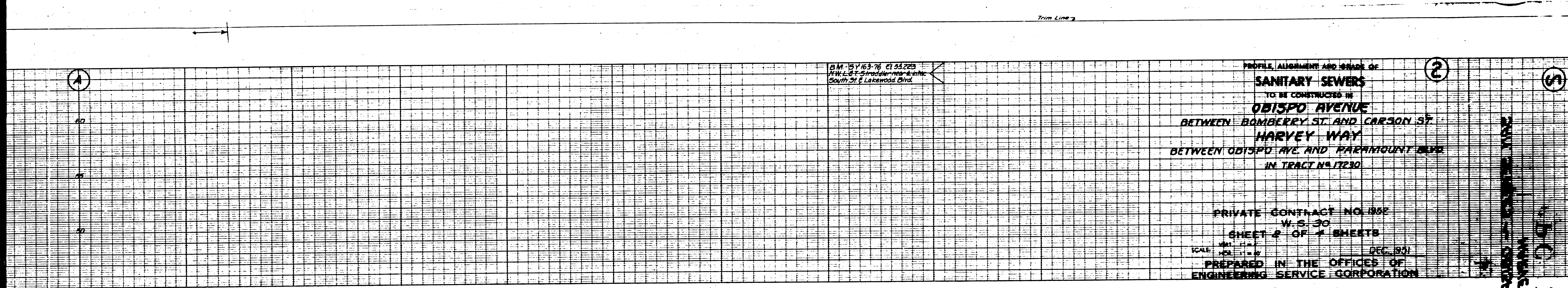
174 1000
 175 1000
 176 1000
 177 1000
 178 1000
 179 1000
 180 1000
 181 1000
 182 1000
 183 1000
 184 1000
 185 1000
 186 1000
 187 1000
 188 1000
 189 1000
 190 1000
 191 1000
 192 1000
 193 1000
 194 1000
 195 1000
 196 1000
 197 1000
 198 1000
 199 1000
 200 1000



24W 25MEB2 ~ RC.1952



Trim Line



BM 15V 163-76 21.5223
NW. L. ST. Gravelly meadow
South of E Lakewood Blvd.

PROFILE, ALIGNMENT AND GRADE OF
SANITARY SEWERS
 TO BE CONSTRUCTED IN
OBISPO AVENUE
 BETWEEN BOMBERRY ST. AND CARSON ST.
HARVEY WAY
 BETWEEN OBISPO AVE. AND HARRINGTON BLVD.
 IN TRACT NO. 17230

PRIVATE CONTRACT NO. 1952
 W.S. 30
 SHEET 2 OF 4 SHEETS
 SCALE: HORIZ. 1" = 40' VERT. 1" = 4'
 DEC. 1951
 PREPARED IN THE OFFICES OF
 ENGINEERING SERVICE CORPORATION

BY E. J. Ryan
110 2 1 NO 104

CARSON



ENGINEERING SERVICE CORPORATION			
1127 W WASHINGTON BLVD LOS ANGELES 15 CALIF PR. 7281			
REVISIONS			
			TRACED BY <u>G.M.R.</u>
			DESIGNED BY
			CK'D BY
			SUBMITTED
SUB STRUCTURES CK'D			
W.O. NO.	DWS NO.	DATE	SCALE
5977-130			VERT. 1" = 4' HORIZ. 1" = 40'

FOR LEGEND
 SEE PLAN NO. S-8-14
 FOR CONSTRUCTION NOTES SEE SHEET 1



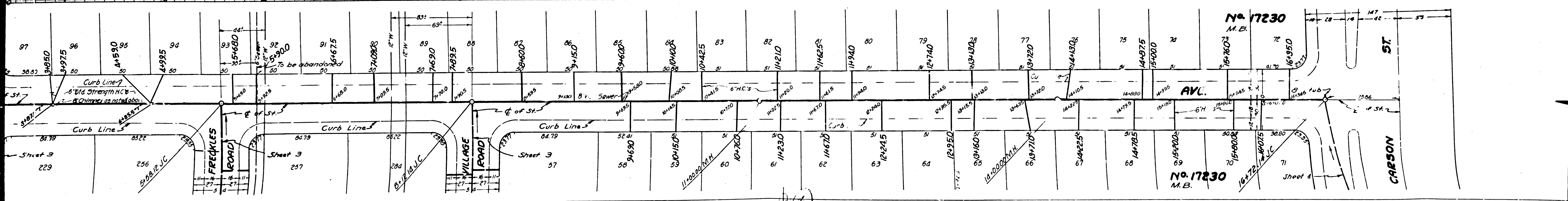
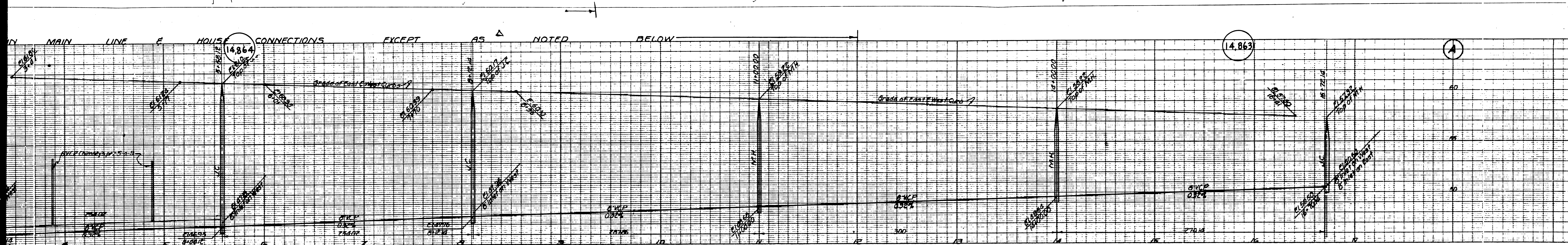
COUNTY OF LOS ANGELES, CALIFORNIA
 APPROVED: William J. Fox COUNTY ENGINEER
 BY E. J. Ryan CHIEF DEPUTY
 APPROVED BY: Richard E. Rubin OFFICE ENGINEER
 CHIEF ENGINEER OF COUNTY
 SANITATION DISTRICT NO. 3
 CHECKED: Richard E. Rubin 12-11-51
 OFFICE OF COUNTY ENGINEER, REG. C. & NO. 7860

Before breaking into any existing structure
 and before final acceptance of this work,
 County Sanitation District should be notified
 in order that required inspection may be made.

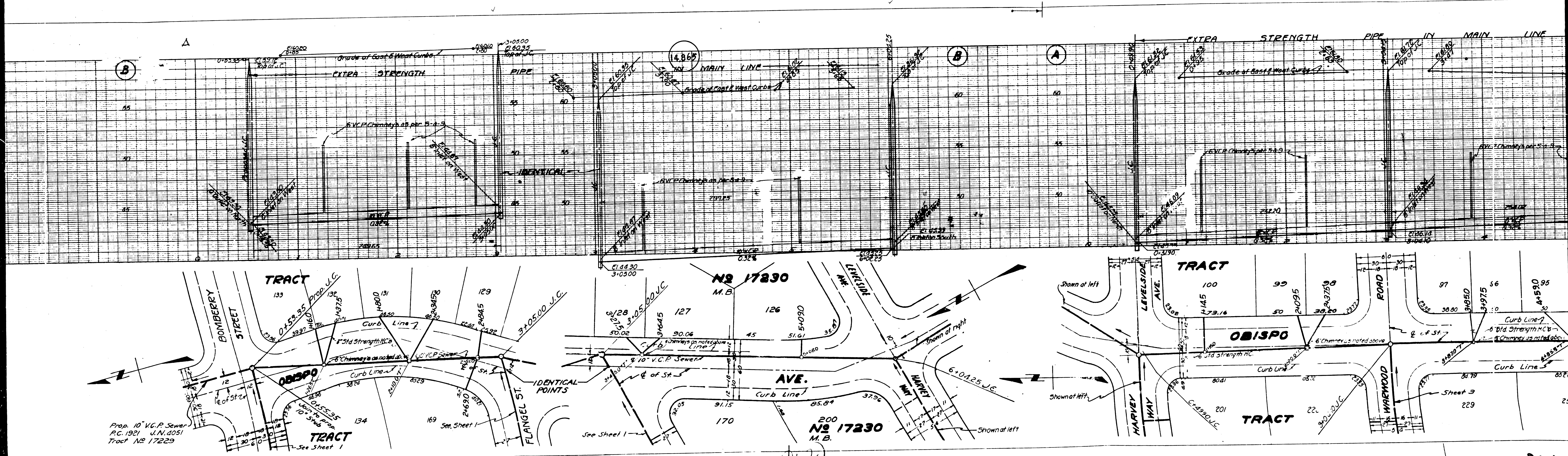
CARSON
 HARVEY WAY
 OBISPO AVE
 10225
 10225
 10225
 10225
 10225

checked 7-18-52 W. J. Fox

Trim Line



25



Prop. 10" V.C.P. Sewer
P.C. 1921 J.N. 0051
Tract No 17229

TRACT

No 17230
M.B.

TRACT

OBISPO

TRACT

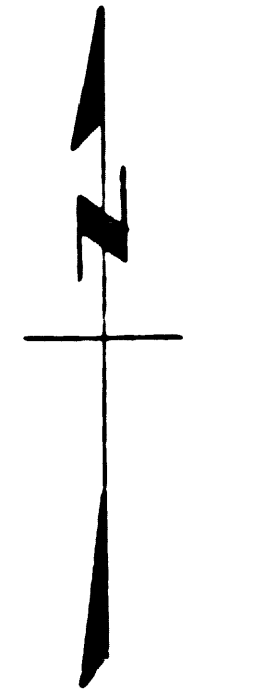
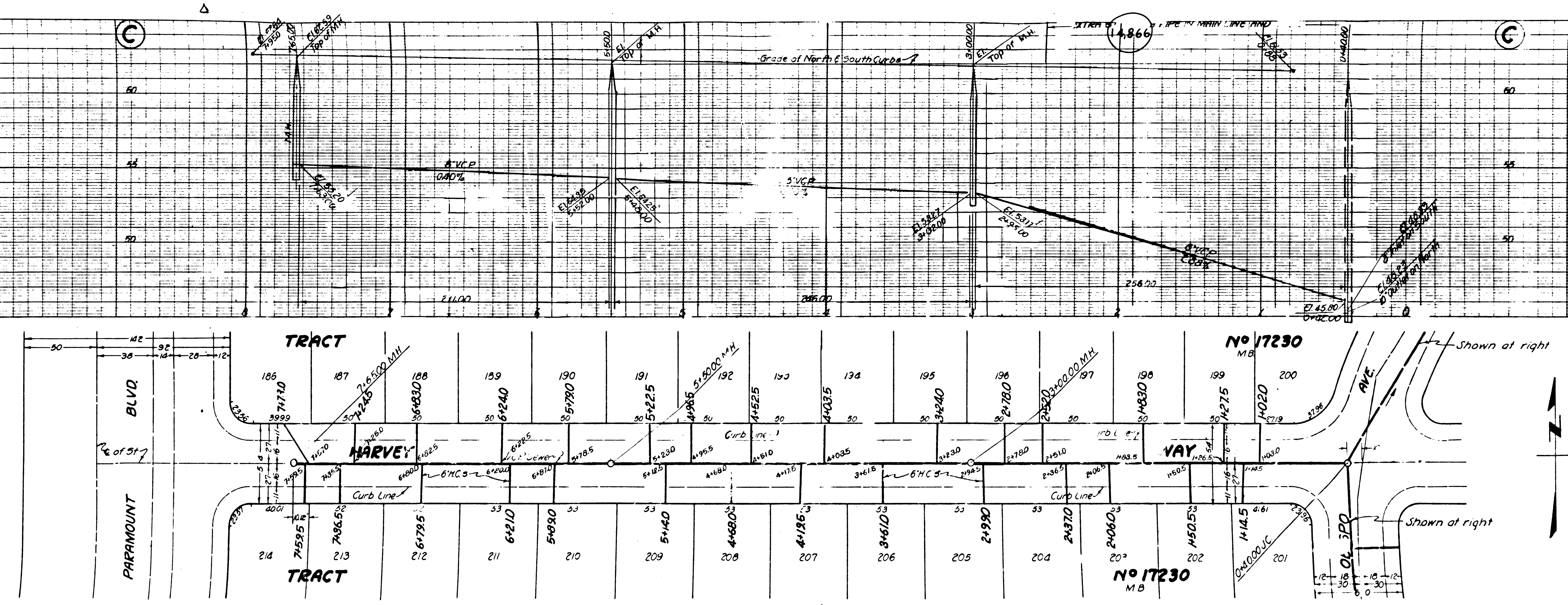
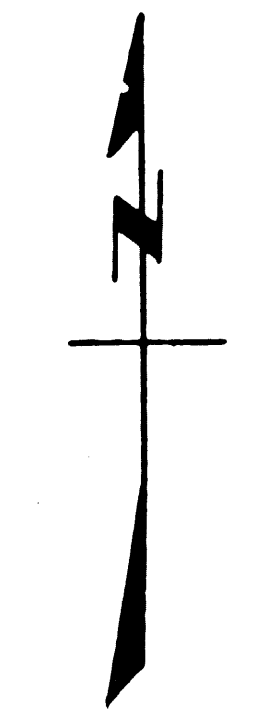
IDENTICAL POINTS

AVE.

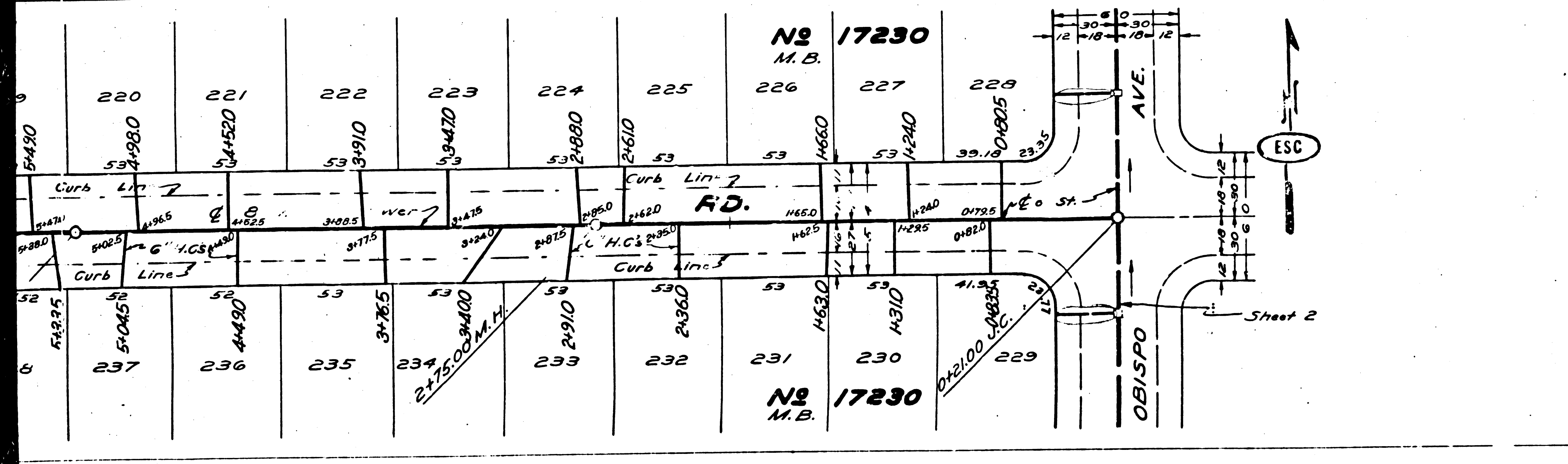
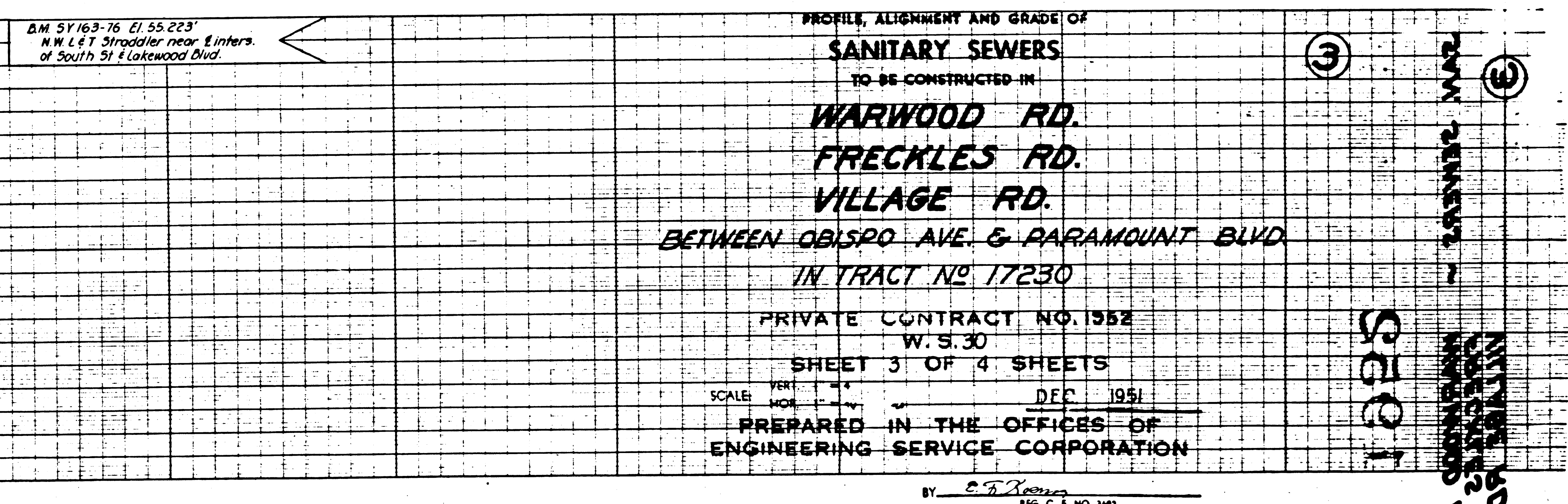
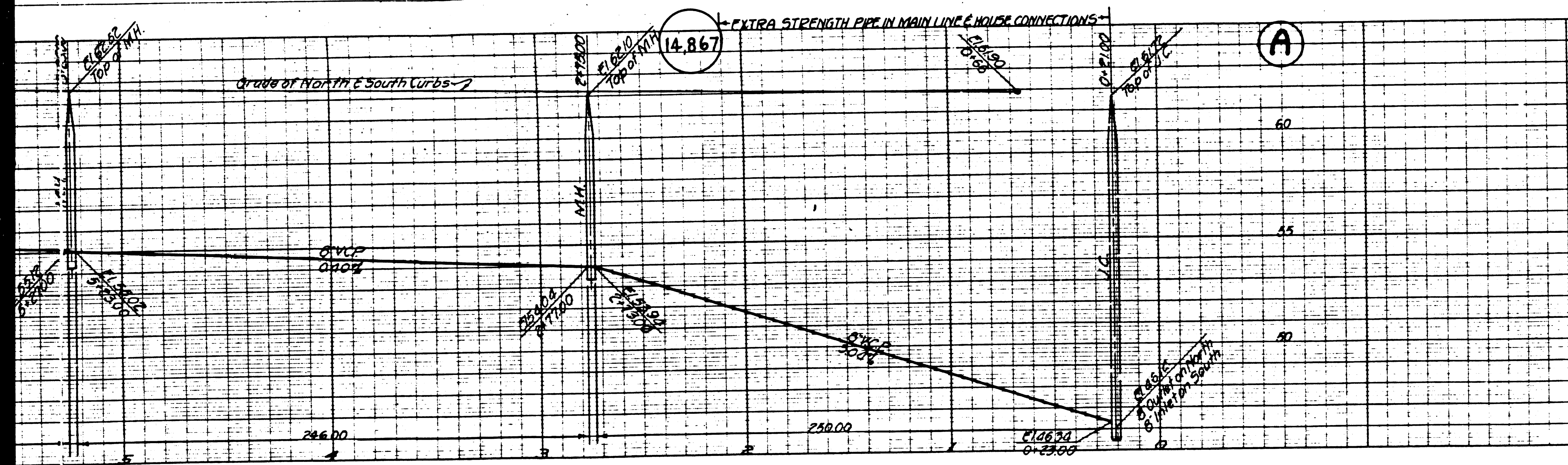
No 17230
M.B.

Sheet 3

PC. 175



Prop. 10" V.C.P.S.
P.C. 1921 J.N.C.
Tract No 1722



ENGINEERING SERVICE CORPORATION
1127 W. WASHINGTON BLVD.
LOS ANGELES 15 CALIF. PR. 2281

REVISIONS	TRACED BY H.S.
	DESIG. BY
	CK'D BY
	SUBMITTED

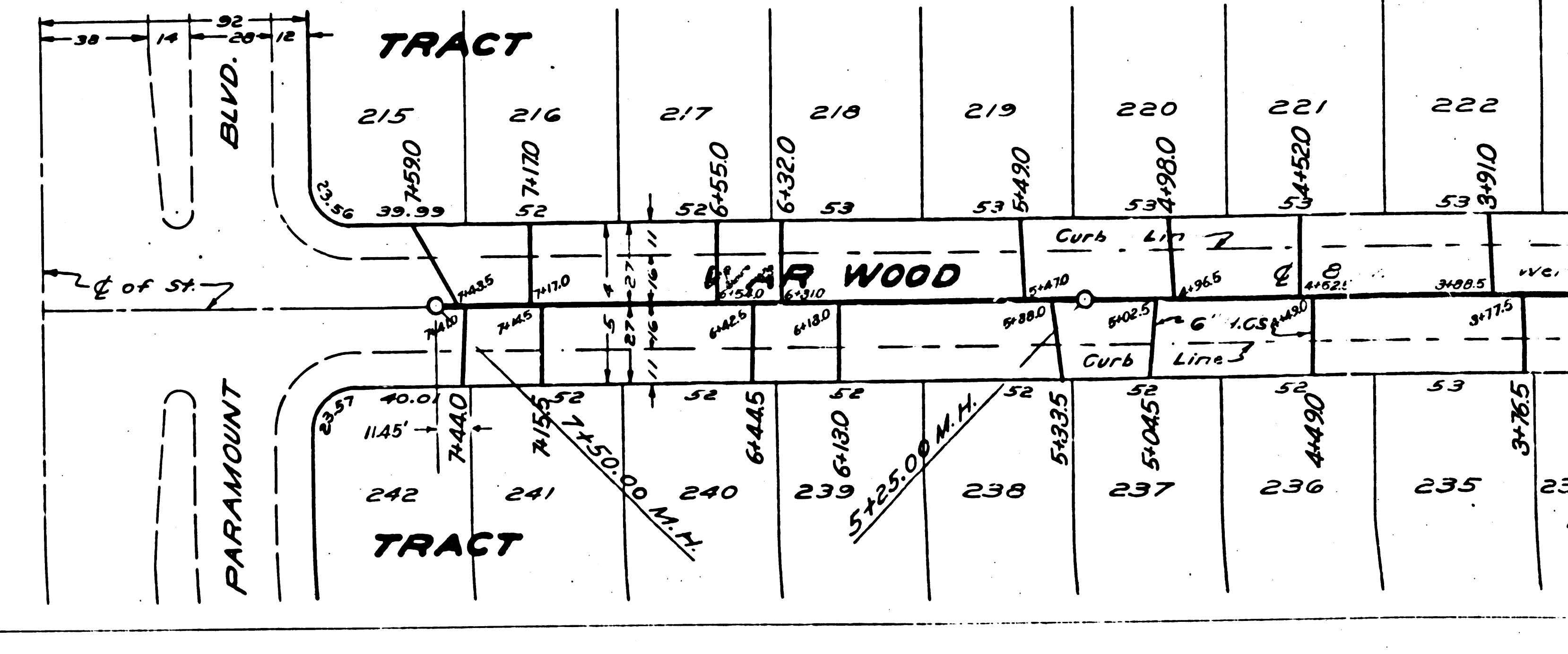
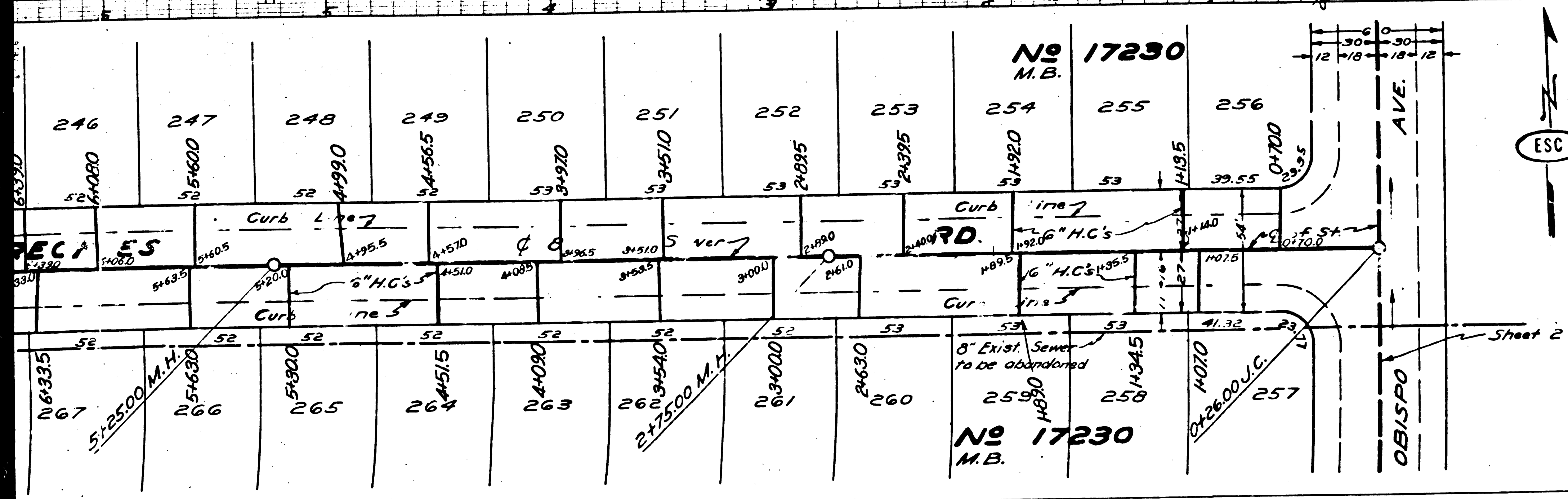
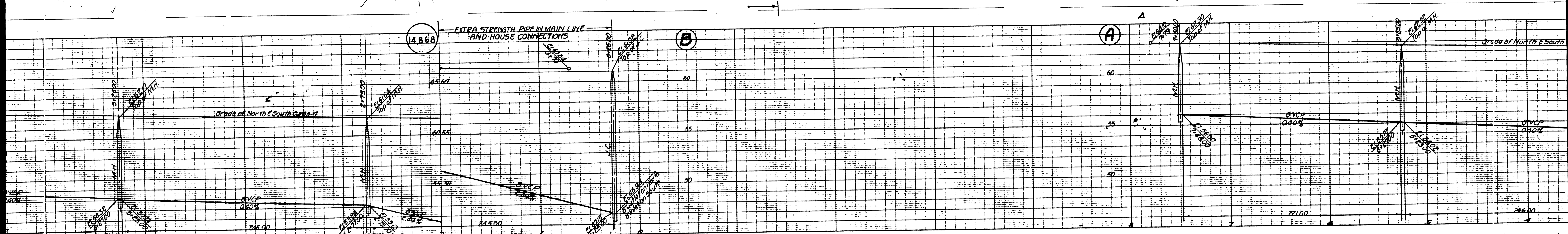
SUB STRUCTURES CK'D			
W.O. NO.	DWG. NO.	DATE	SCALE
2977-130		August 1954	1" = 8' 1/2"

FOR LEGEND SEE PLAN NO. S-44
FOR CONSTRUCTION NOTES SEE SHEET 1

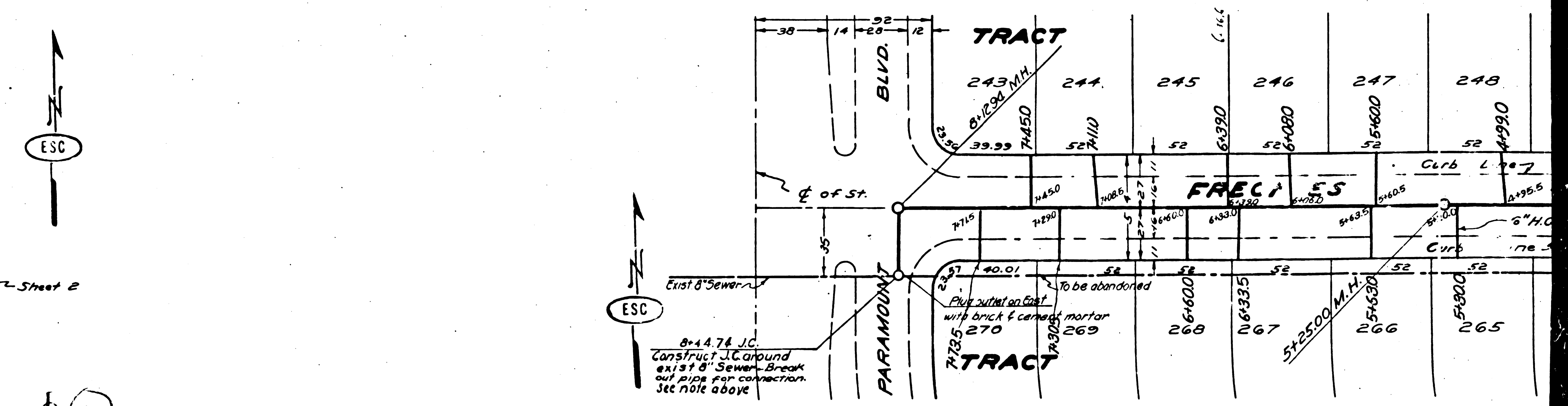
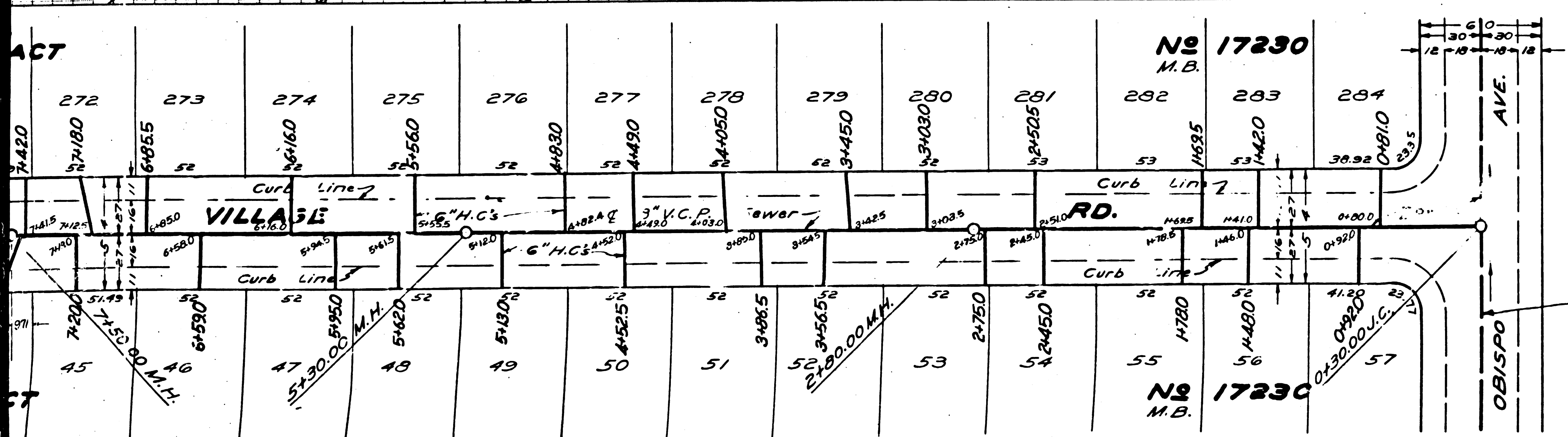
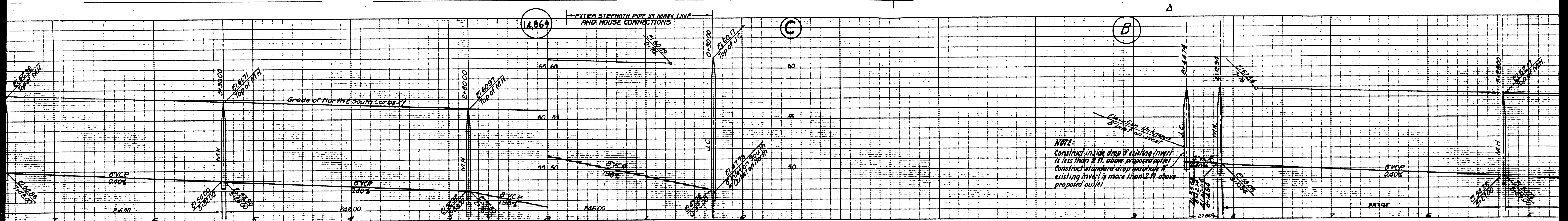
COUNTY OF LOS ANGELES, CALIFORNIA
APPROVED BY *William J. Fox* COUNTY ENGINEER
BY *A. J. Brown* CHIEF DEPUTY
APPROVED BY *R. E. Kuhn* OFFICE ENGINEER
CHIEF ENGINEER OF COUNTY SANITATION DISTRICT NO. 3
CHECKED BY *Robert E. Kuhn* 12-11-51
OFFICE OF COUNTY ENGINEER REG. C.E. NO. 7860

Before breaking into any existing structure and before final acceptance of this work, County Sanitation District should be notified in order that required formation may be made.

HC 1025
OESL 9W RT. OF COUNTY ENGINEER REG. C.E. NO. 7860
C.W. 4023
R.C. 1925
R.C. 172530
8/24



23



(2)

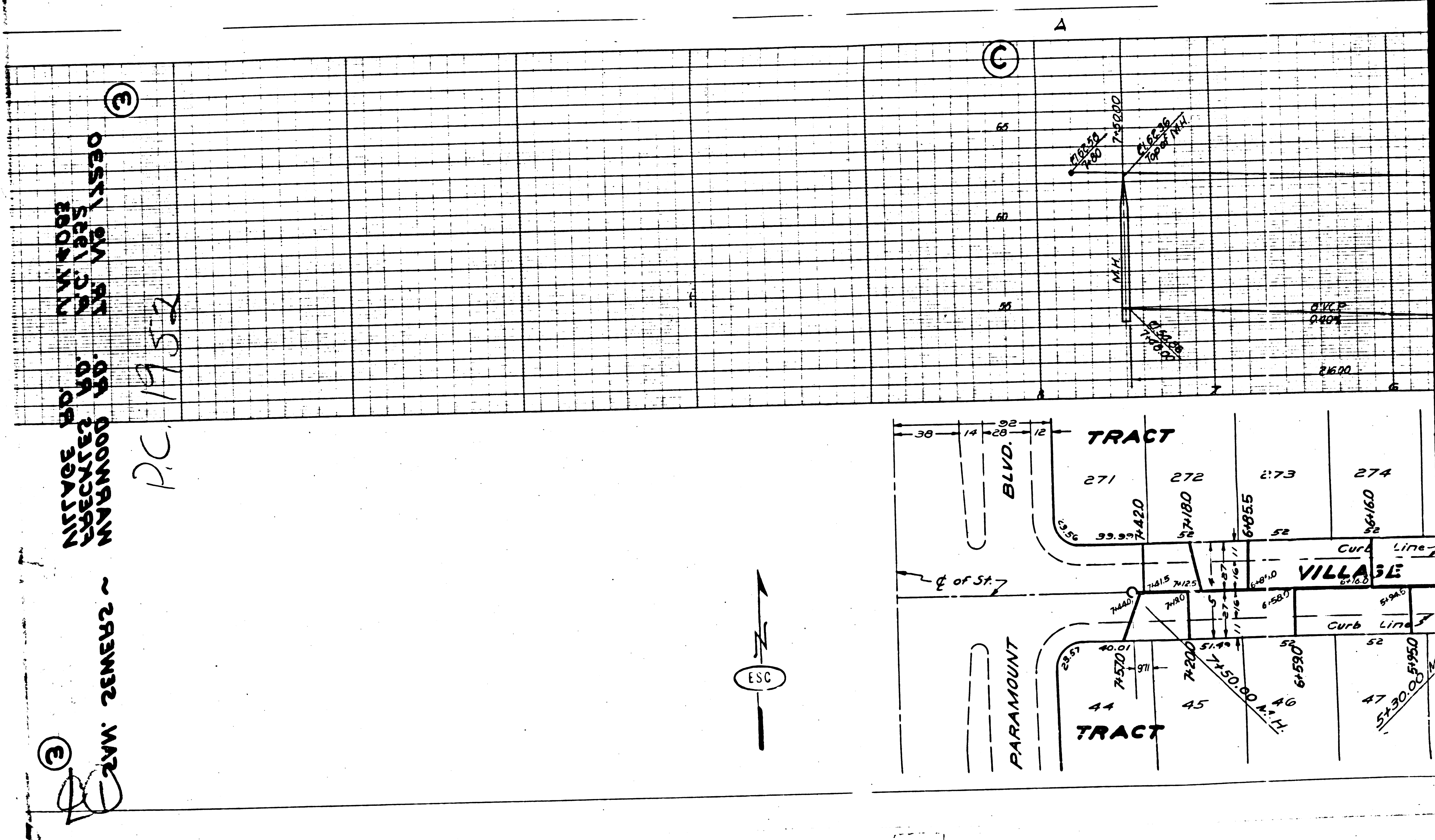
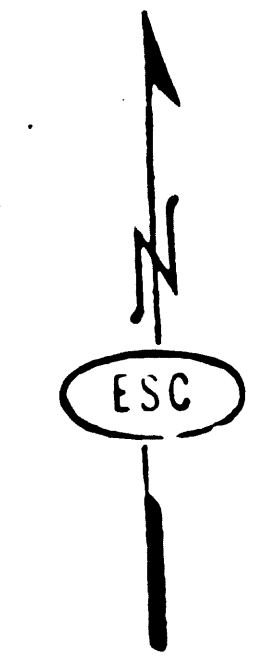
③

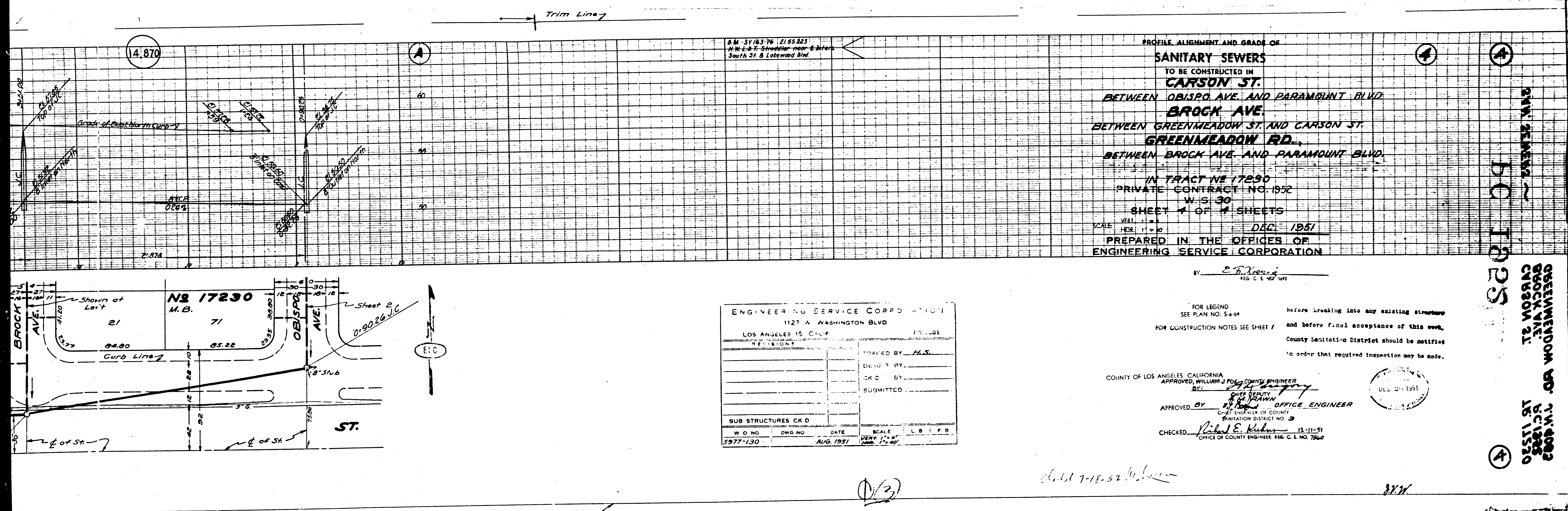
224V: 2EMER2 ~

③

VILLAGE BLVD
WILSON BLVD
PARAMOUNT BLVD
35 1/2 1/2 1570

P.C. 1752





B.M. 57163-76 27.55.223
 N.W. & S.T. Stradford near E. 8th St.
 South St. & Lakeview Blvd.

PROFILE, ALIGNMENT AND GRADE OF
SANITARY SEWERS
 TO BE CONSTRUCTED IN
CARSON ST.
 BETWEEN OBISPO AVE. AND PARAMOUNT BLVD.
BROCK AVE.
 BETWEEN GREENMEADOW ST. AND CARSON ST.
GREENMEADOW RD.
 BETWEEN BROCK AVE. AND PARAMOUNT BLVD.
 IN TRACT NE 17230
 PRIVATE CONTRACT NO. 1952
 W.S. 30
 SHEET 1 OF 2 SHEETS
 YEAR: 1951
 SCALE: HORIZ. 1" = 40' VERT. 1" = 4'
 DEC. 1951
 PREPARED IN THE OFFICES OF
 ENGINEERING SERVICE CORPORATION

GREENMEADOW RD. T.W. 4092
 BROCK AVE. R.C. 1225
 CARSON ST. LB 11520
 10-19-51
 SAN. DISTRICT NO. 4

ENGINEERING SERVICE CORPORATION			
1127 A WASHINGTON BLVD			
LOS ANGELES 15 CALIF. 90001			
REVISIONS		DRAWN BY: H.S.	
		DESIGNED BY:	
		CHECKED BY:	
		SUBMITTED:	
SUB STRUCTURES CHECKED			
W O NO	DWG NO	DATE	SCALE
5977-130		AUG. 1951	L. B. I. F. B.

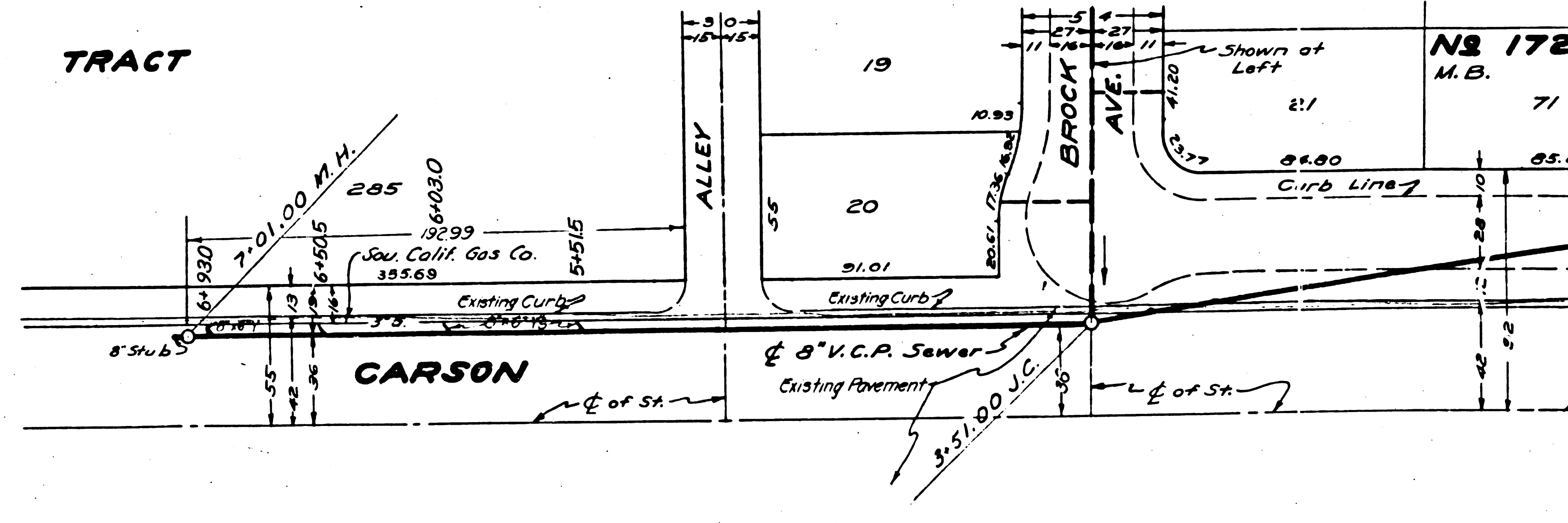
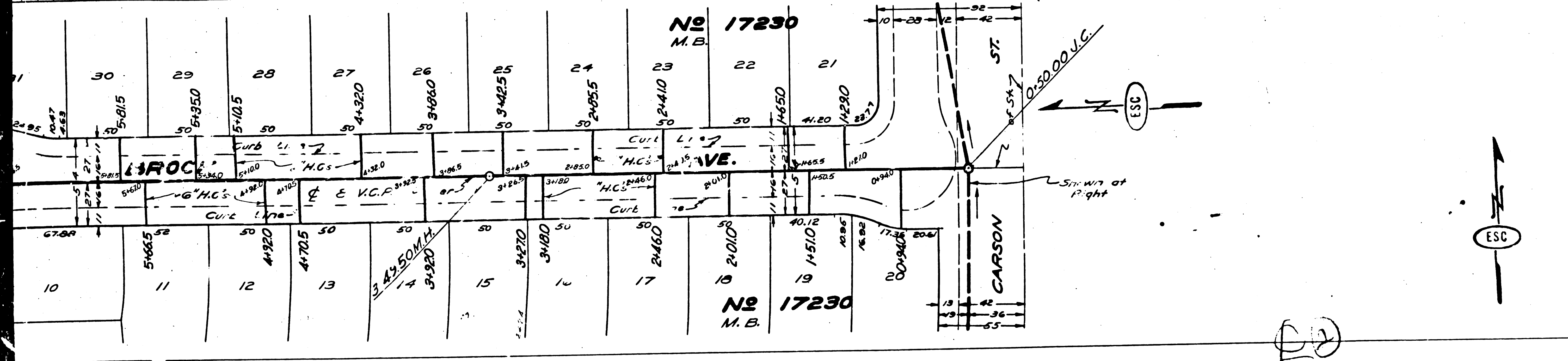
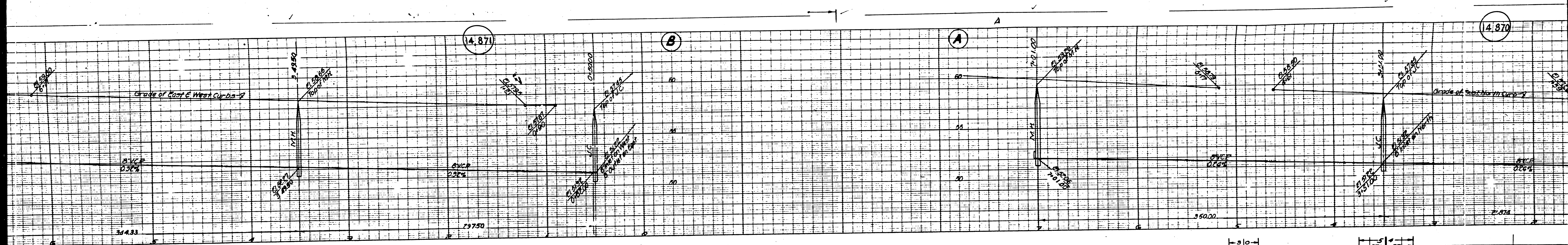
FOR LEGEND SEE PLAN NO. S-64
 FOR CONSTRUCTION NOTES SEE SHEET 1
 before breaking into any existing structures and before final acceptance of this work, County Sanitation District should be notified in order that required inspection may be made.

COUNTY OF LOS ANGELES, CALIFORNIA
 APPROVED WILLIAM J. FOLEY COUNTY ENGINEER
 BY: *[Signature]*
 DEPUTY COUNTY ENGINEER
 APPROVED BY: *[Signature]* OFFICE ENGINEER
 COUNTY ENGINEER OF COUNTY SANITATION DISTRICT NO. 4
 CHECKED: *[Signature]* 12-11-51
 OFFICE OF COUNTY ENGINEER, Bldg. C. E. NO. 7860

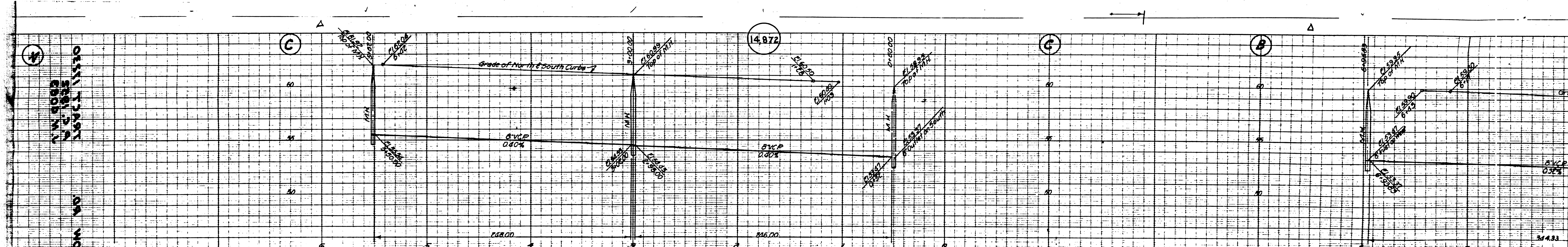
(1/3)

check 7-15-52 H.S.

8274



12

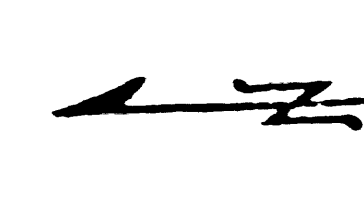
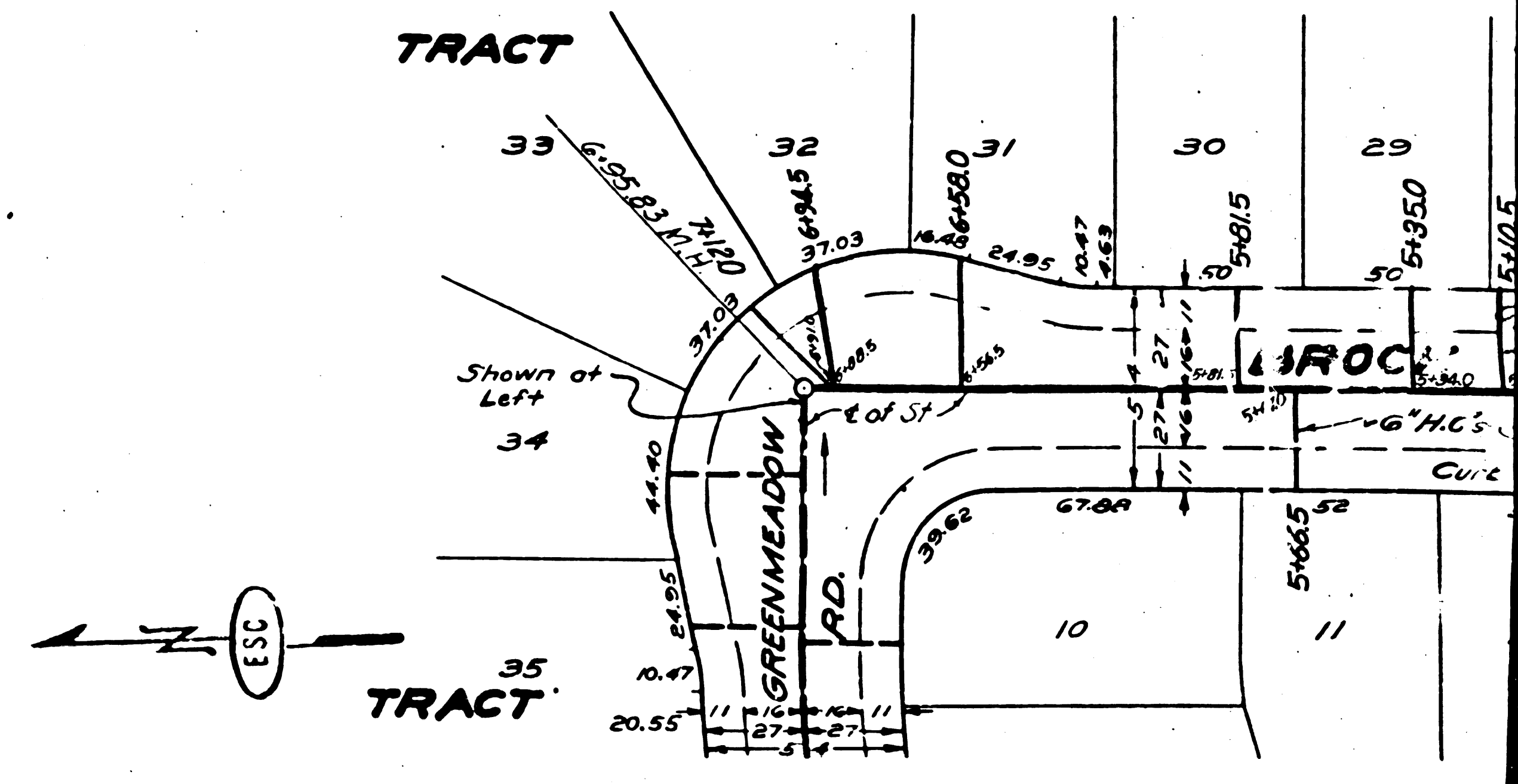
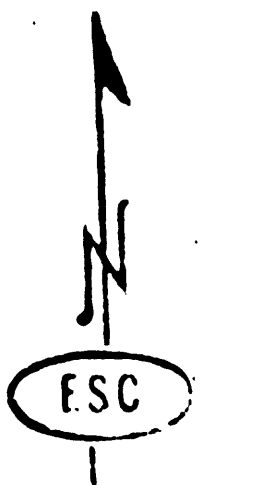
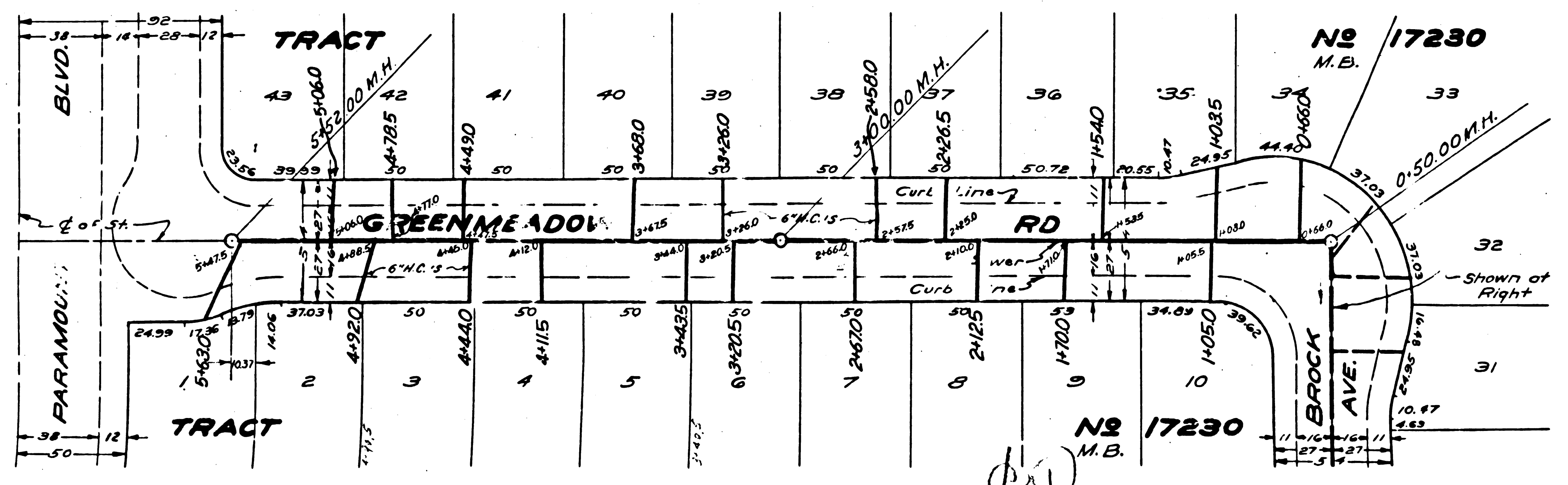


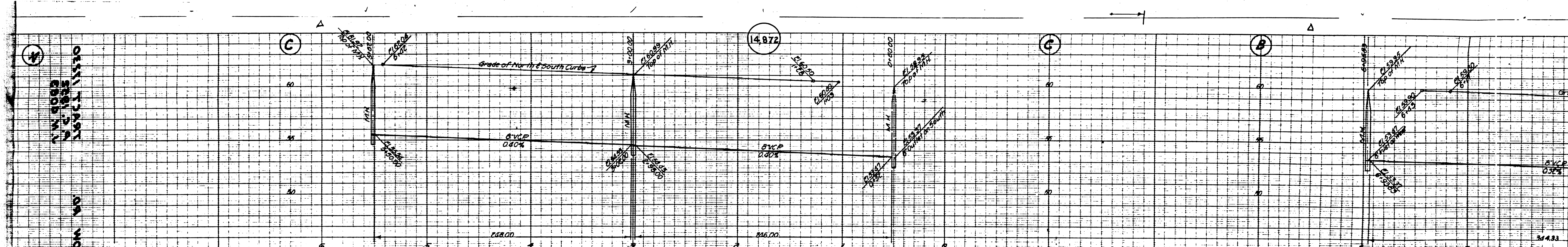
1/4 SECTION
 T12N R10E
 S1/2 SEC 11
 T12N R10E
 S1/2 SEC 11

20' WIDE
 GREENMEADOW RD

20' WIDE
 BROCK AVE
 GREENMEADOW RD
 PC1952

20' WIDE
 BROCK AVE
 GREENMEADOW RD
 PC1952





2 1/2' ZONE
 BROCK AVE
 GREENMEADOW NO
 1564211150

2 1/2' ZONE
 BROCK AVE
 GREENMEADOW NO
 1564211150
 PC1952

2 1/2' ZONE
 BROCK AVE
 GREENMEADOW NO
 1564211150

