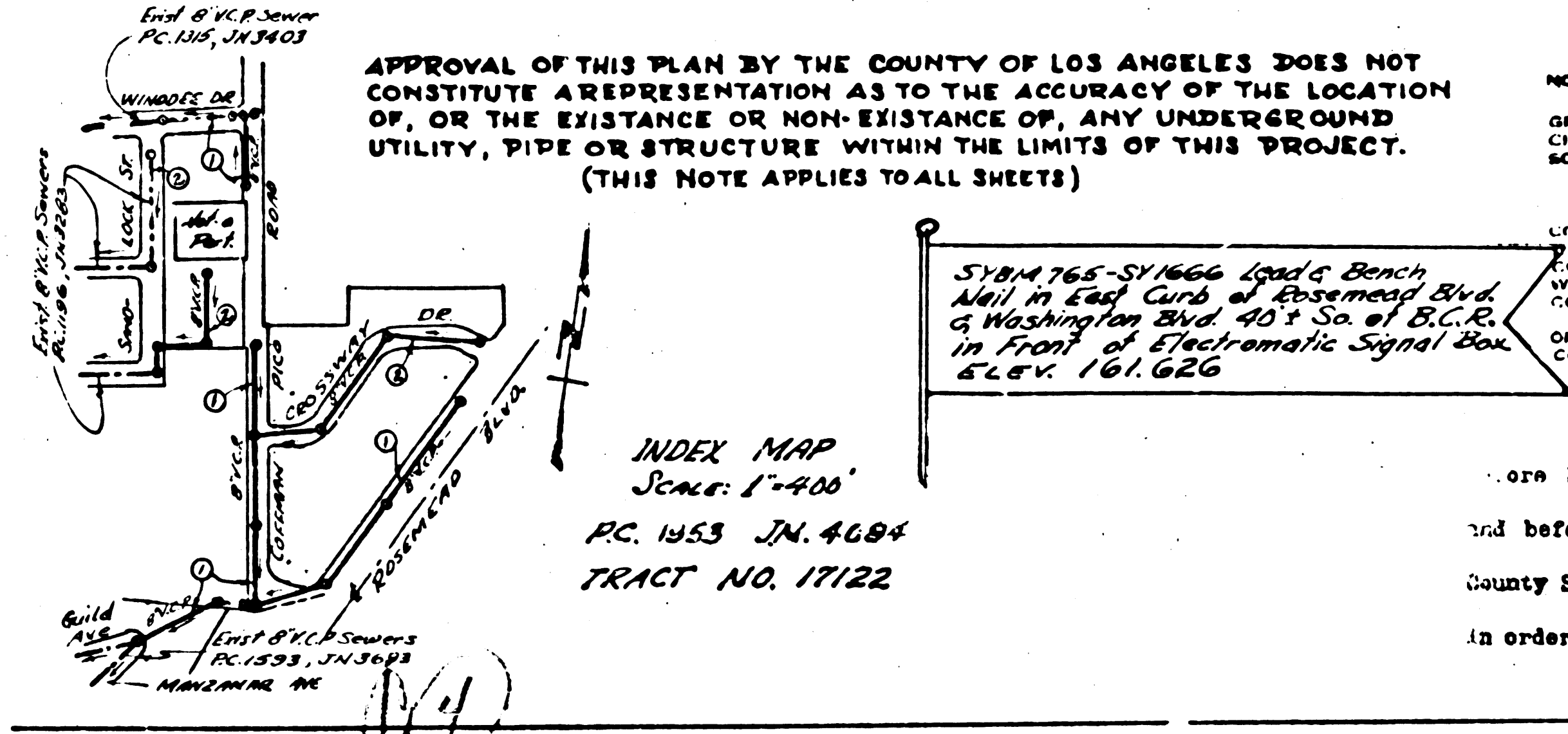


	14,375
USE STANDARD STRENGTH PIPE EXCEPT AS NOTED	
USE CEMENT MORTAR FOR ALL VITRIFIED CLAY PIPE JOINTS	
ENCASE FOUR FEET OF SEWER AT POINTS OF INTERFERENCE WITH POLES AS PER S. 4-119	
CONSTRUCT HOUSE CONNECTIONS WITH INVERT AT PROP. LINE 5 FEET BELOW CURB GRADE EXCEPT AS NOTED	
ALL STRUCTURES SHALL BE BRICK SEWER STRUCTURES AS PER PLAN NO. S-4-104 EXCEPT AS NOTED	
USE STANDARD MANHOLE FRAMES AND COVERS AS PER PLAN NO. S-4-117 EXCEPT AS NOTED	
CONSTRUCT TOPS OF ALL STRUCTURES IN RIGHTS OF WAY 6" ABOVE FINISHED GRADE	
RESURFACE ALL TRENCHES WITHIN PAVED AREA TO MEET LOS ANGELES COUNTY ROAD DEPT. OR STATE HIGHWAY REQUIREMENTS IN ACCORDANCE WITH PERMIT	
PROVIDE STAKES ON THE PROPERTY LINES OR PROPERTY LINES PRODUCED, AT RIGHT ANGLES TO THE SEWER LINE AT THE CENTER LINE OF EACH MANHOLE.	
NO REVISIONS SHALL BE MADE IN THESE PLANS WITHOUT APPROVAL OF THE COUNTY ENGINEER. NO REPRESENTATIVE OF THE COUNTY ENGINEER WILL SURVEY OR LAY OUT ANY PORTION OF THE WORK.	
THE OWNER OR HIS AUTHORIZED REPRESENTATIVE SHALL FURNISH THE COUNTY ENGINEER WITH GRADE SHEETS AND STATIONS OF ALL HOUSE CONNECTIONS, AND BRANCHES, AND SHALL PROVIDE STAKES FOR THEM AT THEIR PROPER LOCATIONS WITH STATIONING PLAINLY MARKED.	
ANY CHANGE OF LOCATION SHALL BE REQUESTED IN WRITING BY THE OWNER OR HIS REPRESENTATIVE.	

STOPPERS TO BE INSTALLED WITH JOINT COMPOUND BY MANUFACTURER AT HIS PLANT. SPECIFICATIONS - SECTION 33.48.  
 CONCRETE PAVEMENT TO BE CUT NOT LESS THAN 2 INCHES IN DEPTH WITH CONCRETE SAW. SPECIFICATIONS - SECTION 65.



APPROVAL OF THIS PLAN BY THE COUNTY OF LOS ANGELES DOES NOT CONSTITUTE REPRESENTATION AS TO THE ACCURACY OF THE LOCATION OF, OR THE EXISTENCE OR NON-EXISTENCE OF, ANY UNDERGROUND UTILITY, PIPE OR STRUCTURE WITHIN THE LIMITS OF THIS PROJECT. (THIS NOTE APPLIES TO ALL SHEETS)

INDEX MAP  
 Scale: 1"=400'  
 RC. 1453 J.N. 4084  
 TRACT NO. 17122

SYNOPSIS - Synops Road & Bench Mark to East Curb of Rosemead Blvd. & Washington Blvd. 40' So. of B.C.R. in front of Electric Signal Box 42,000. 10.1.620

PROFILE ALIGNMENT AND GRADE OF  
**SANITARY SEWERS**  
 TO BE CONSTRUCTED IN  
 TRACT NO. 17122  
 SEWER EASEMENTS  
 BETWEEN MANZANAR AVE. & COFFMAN PKWY RD.  
 ROSEMEAD BOULEVARD  
 BETWEEN COFFMAN PKWY RD. & CROSSWAY DR.  
 COFFMAN PKWY ROAD  
 BETWEEN WINDSEE DR. & EDSEHEAD BLVD.  
 WINDSEE DRIVE  
 BETWEEN SANDLOCK ST. & COFFMAN PKWY RD.  
 PRIVATE CONTRACT NO. 1953  
 W. S. 36.  
 SHEET 1 OF 2 SHEETS  
 SCALE: VERT. 1"=4'  
 HORIZ. 1"=40'  
 NOV. 1951

PREPARED IN THE OFFICES OF  
**KEEMERER ENG. CO.**  
 BY: Wm. C. Thomas  
 REG. C. E. NO. 9234

FOR LEGEND  
 SEE PLAN NO. S-4-84

NOTE: GRADES TO WHICH THIS IMPROVEMENT IS TO BE CONSTRUCTED ARE SHOWN ON PLANS AND PROFILES. GRADE POINTS FOR TOP OF CURB, CENTER LINE OF STREET OR CENTER LINE OF ALLEY ARE SHOWN BY CIRCLES ON PROFILES AT ALL POINTS BETWEEN DESIGNATED POINTS. THE GRADE SHALL BE ESTABLISHED SO AS TO CONFORM TO A STRAIGHT LINE DRAWN BETWEEN SAID DESIGNATED POINTS. ELEVATIONS ARE IN FEET ABOVE U. S. G. S. DATUM OR MEAN SEA LEVEL. THIS DRAWING AND THE DATA HEREON ARE HEREBY MADE A PART OF THE SPECIFICATIONS. WORK SHALL BE CONSTRUCTED ACCORDING TO SPECIFICATIONS ON FILE IN THE OFFICE OF THE COUNTY ENGINEER AND SHALL BE PROSECUTED ONLY IN THE PRESENCE OF THE COUNTY ENGINEER. BEFORE WORK CAN BE STARTED, THE CONTRACTOR MUST OBTAIN A PERMIT TO EXCAVATE IN COUNTY STREETS FROM THE L. A. COUNTY ROAD DEPT. 108 W. 1st St., LOS ANGELES AND MAKE A DEPOSIT WITH THE COUNTY ENGINEER, ROOM 810 AT 108 W. 1st STREET, SUFFICIENT TO COVER THE COST OF CONSTRUCTION INSPECTION AND RECORD PLANS. IF WORK IS TO BE DONE IN A STATE HIGHWAY, A PERMIT MUST BE OBTAINED FROM THE STATE OF CALIFORNIA, DIVISION OF HIGHWAYS, 808 STATE BUILDING, AFTER MAKING THE DEPOSIT WITH THE COUNTY ENGINEER.

COUNTY OF LOS ANGELES, CALIFORNIA

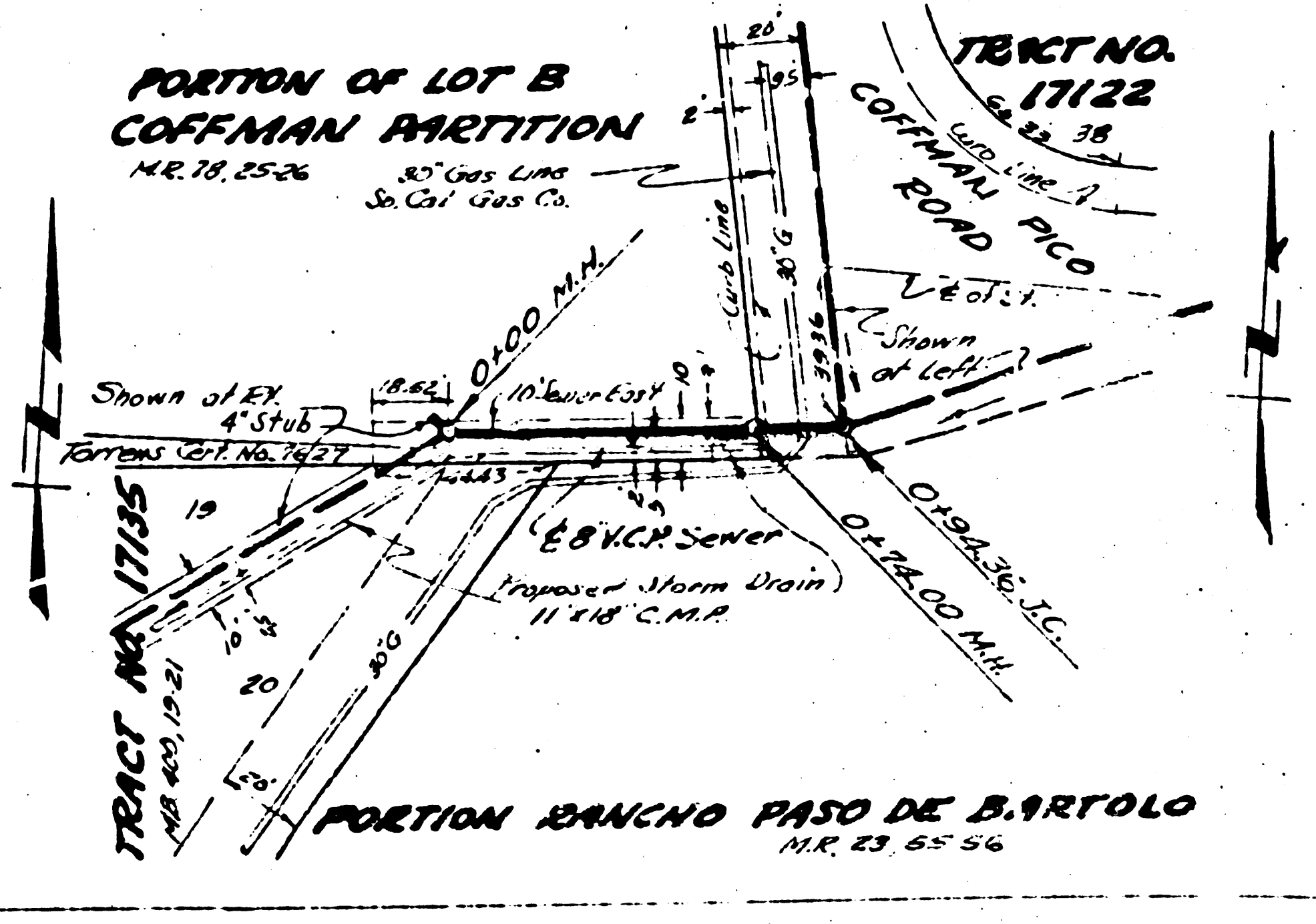
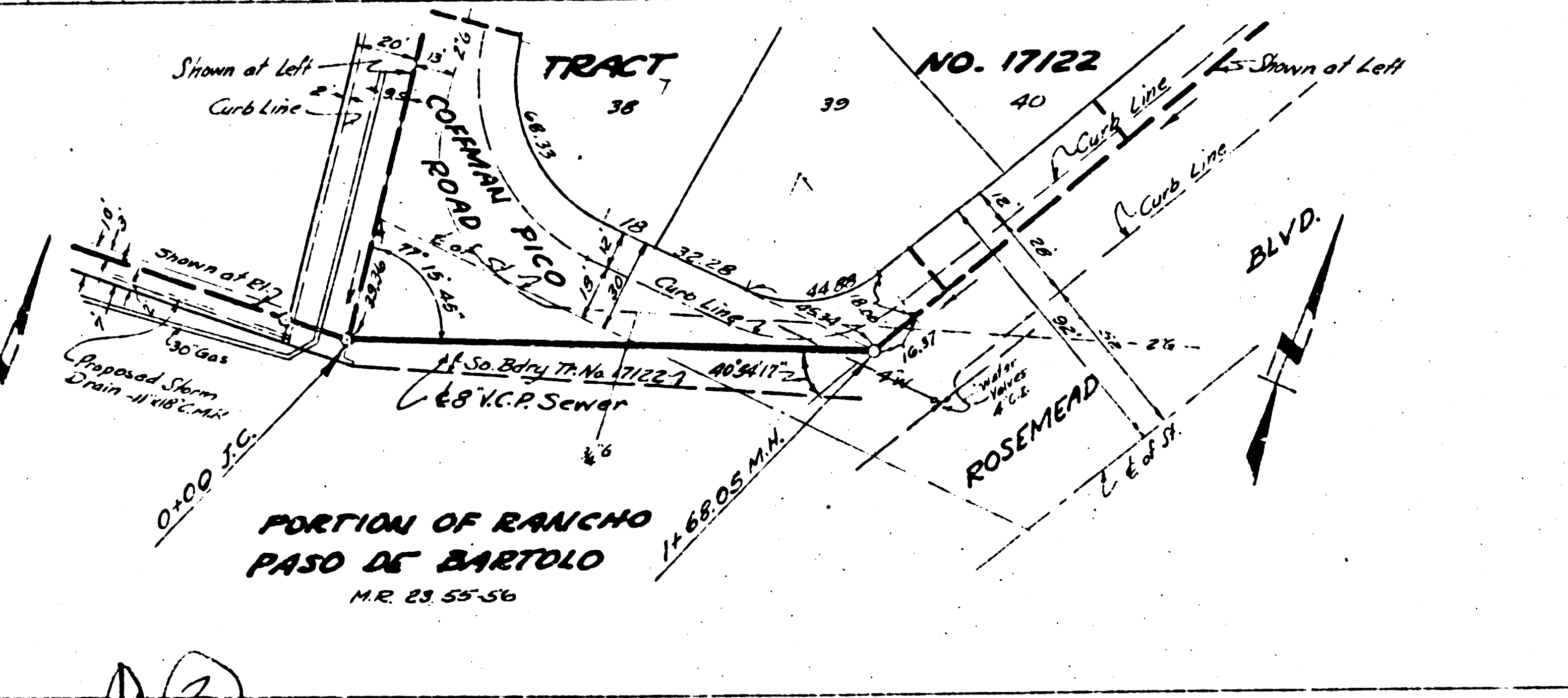
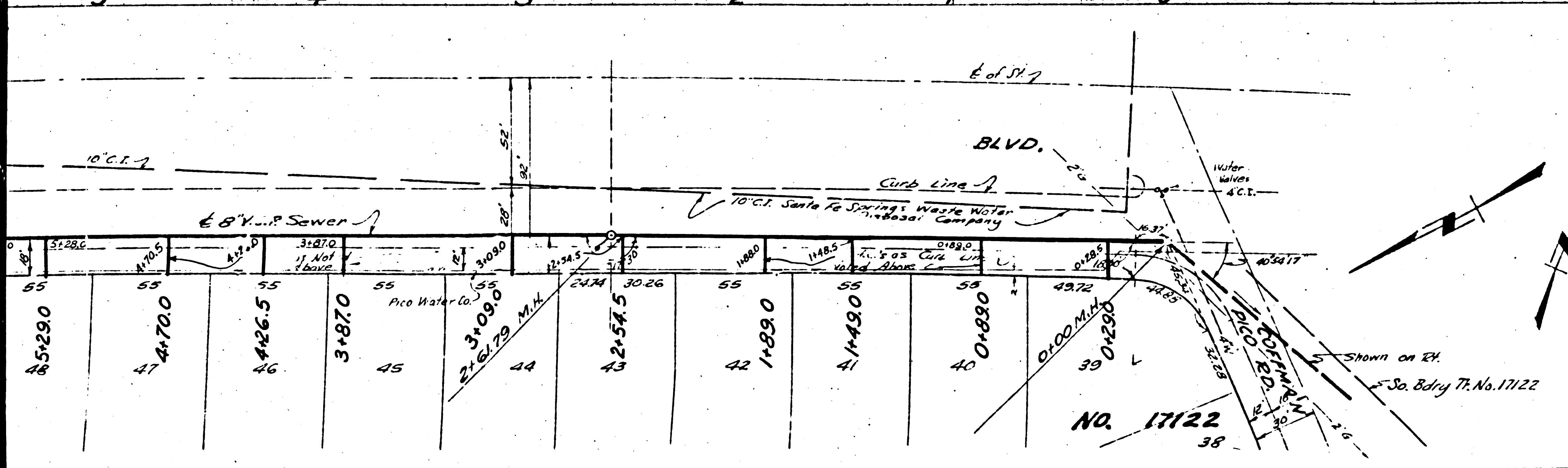
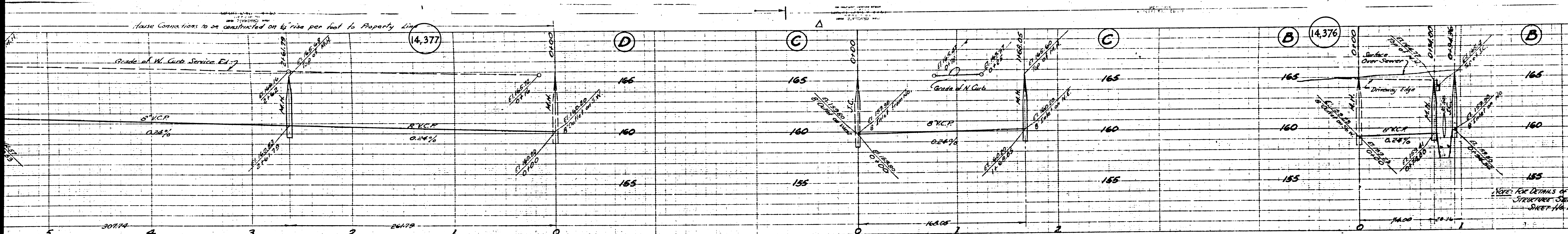
APPROVED, William J. Fox COUNTY ENGINEER  
 BY: Wm. C. Thomas Chief Deputy

APPROVED BY: AMANN OFFICE ENGINEER  
 COUNTY ENGINEER'S OFFICE  
 SANITATION DISTRICT NO. 2

CHECKED BY: H. E. Fischer 11-19-1951  
 OFFICE OF COUNTY ENGINEER, 808 STATE BLDG.

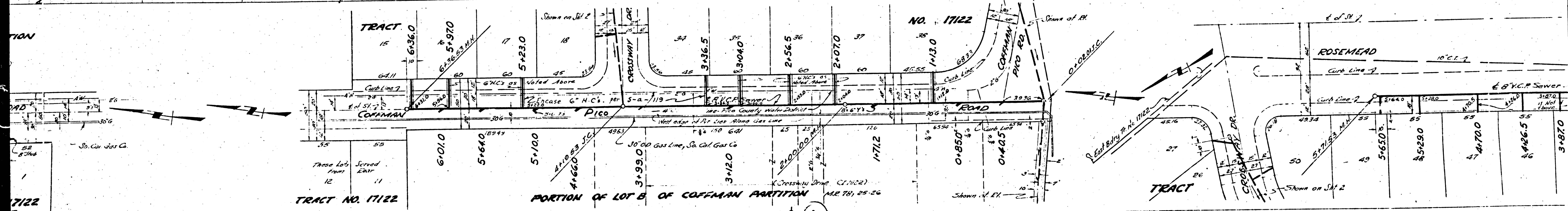
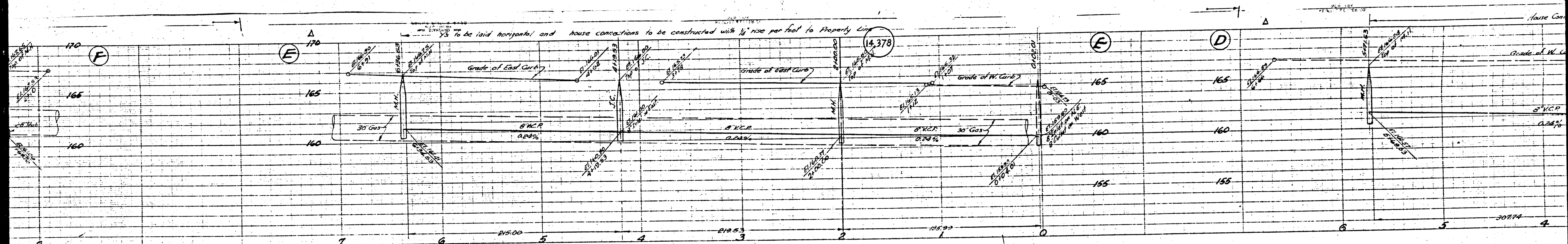
COLUMBIA 163, 650' WINDSEE DR.  
 2 INCH 10' O.D. 5' S. 21.12.52  
 2 INCH 10' O.D. 5' S. 21.12.52  
 2 INCH 10' O.D. 5' S. 21.12.52  
 11. 1951  
 11. 1951





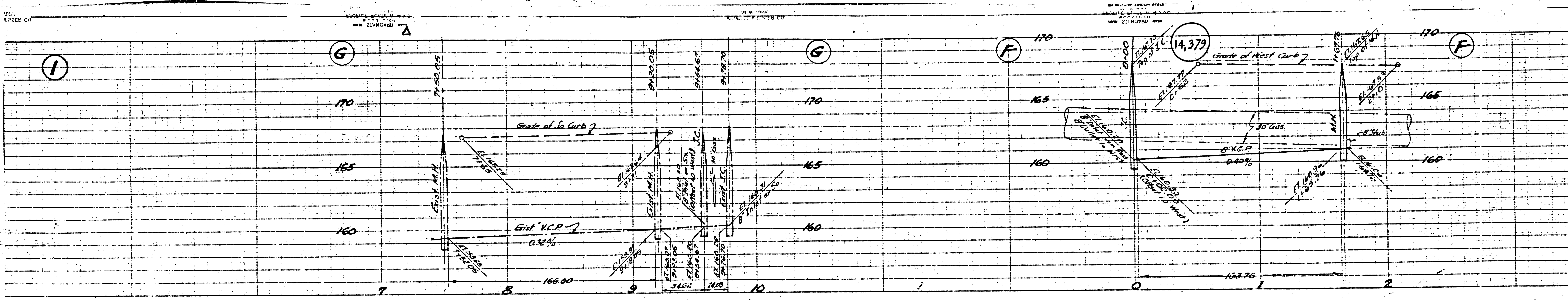
3



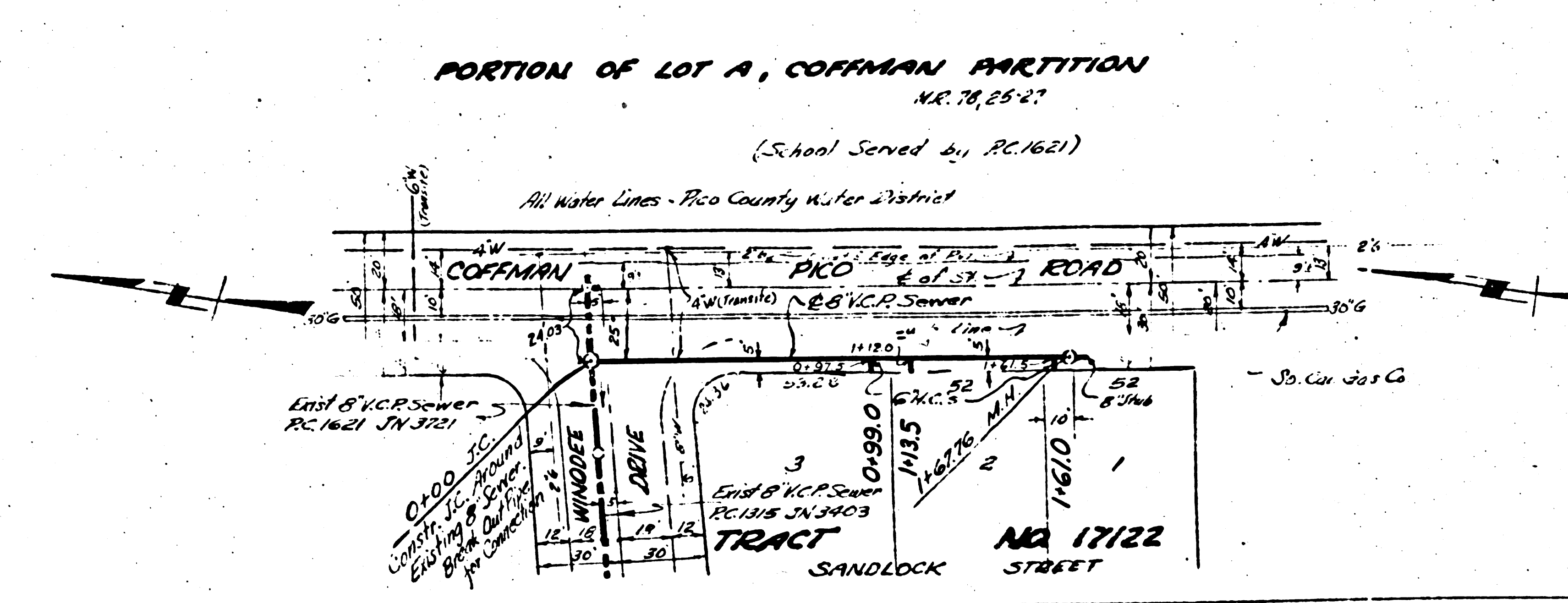
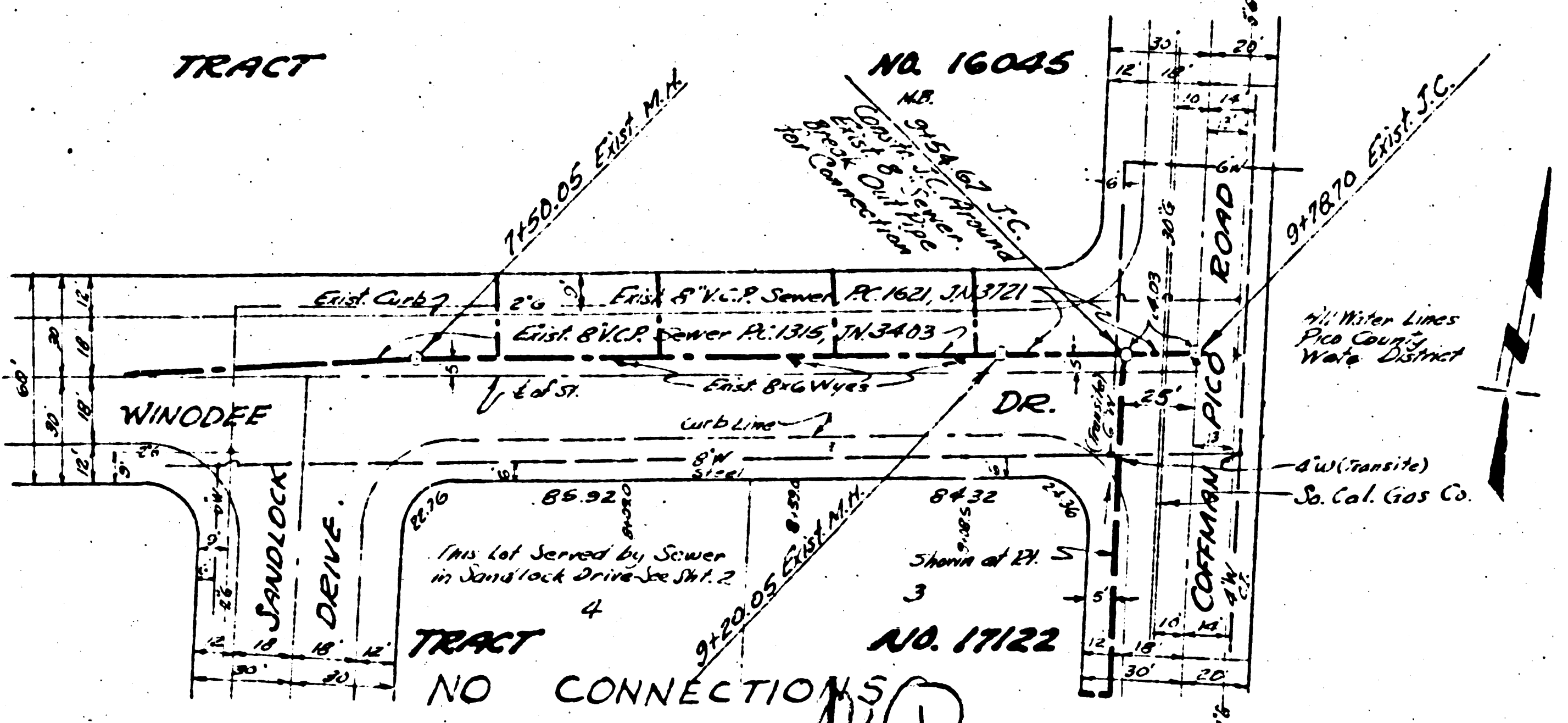


②



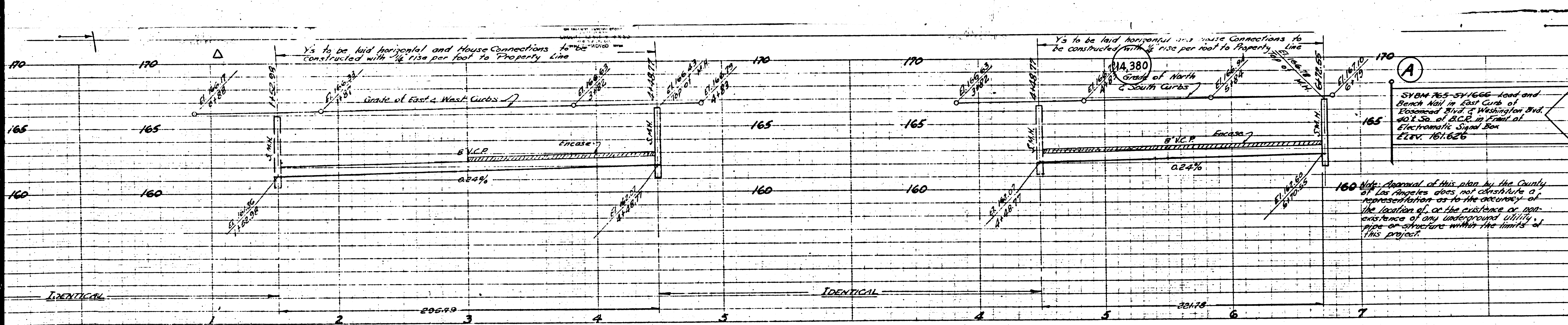


COFFMAN 160' 60' WINDOEE DRIVE  
 JENNIE CARMENICO ESTERNELO BRIND  
 PAUL NO 1 OF S 2ND E 12  
 CHARLES JENNEGO - LANCE W 1155  
 W 1023  
 W 1084  
 P.C. 1953



NO CONNECTIONS

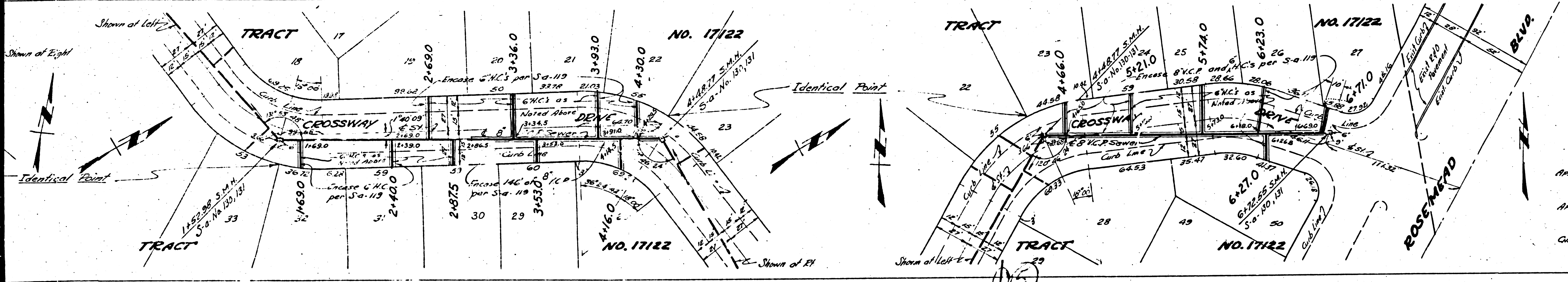




**PROFILE ALIGNMENT AND GRADE OF SANITARY SEWERS TO BE CONSTRUCTED IN TRACT NO. 17122 CROSSWAY DRIVE**  
 BETWEEN COFFMAN PKD RD & ROSEMEAD BLVD SANDLOCK STREET BETWEEN KELTONVIEW DR & WINDOEE DRIVE SEWER EASEMENTS BETWEEN SANDLOCK ST. & COFFMAN PKD RD

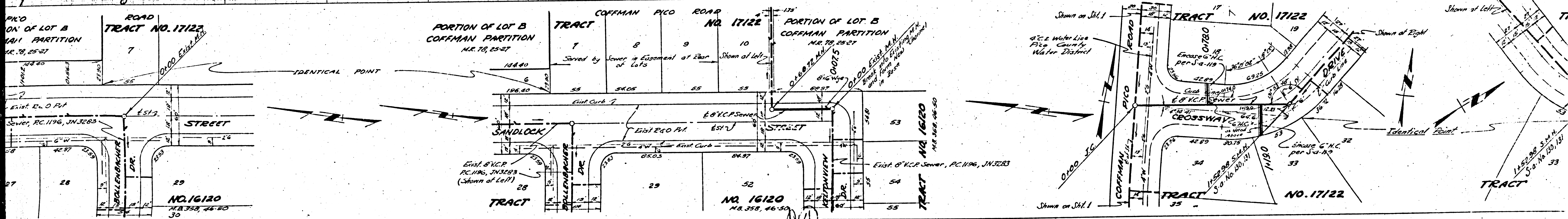
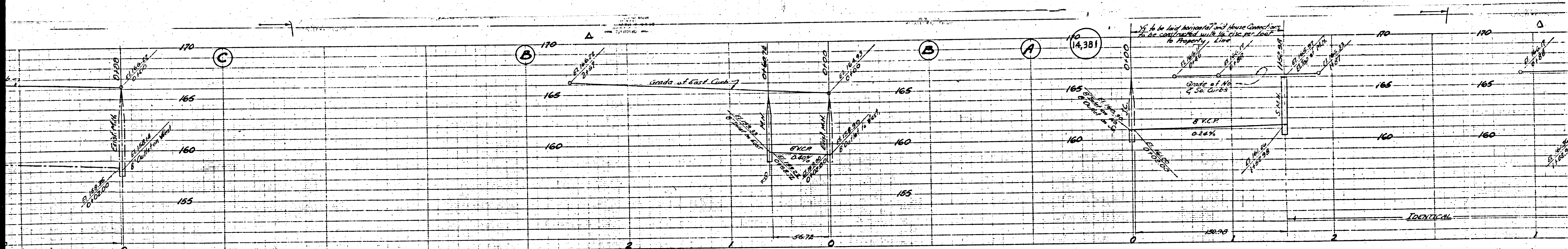
PRIVATE CONTRACT NO. 1953  
 W.S. 36  
 SHEET 2 OF 2 SHEETS  
 SCALE: VERT. 1"=4'  
 HOR. 1"=40'  
 PREPARED IN THE OFFICES OF  
**KEMMERER ENGINE CO., INC.**  
 BY *Thos. C. Hansen*  
 Reg. C.E. No. 8264  
 For legend See Plan 3-0-64  
 See Sheet 1 for Construction Notes.

160 Note: Approval of this plan by the County of Los Angeles does not constitute a representation as to the accuracy of the location of, or the existence or non-existence of any underground utility, pipe or structure within the limits of this project.

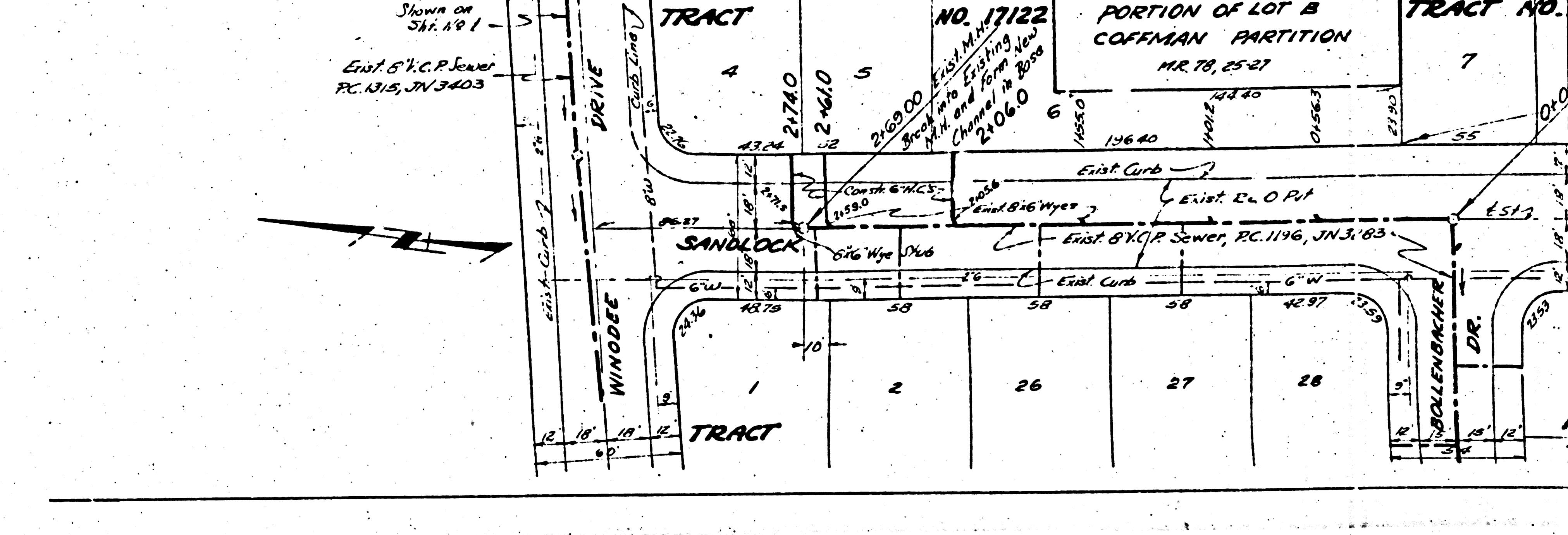
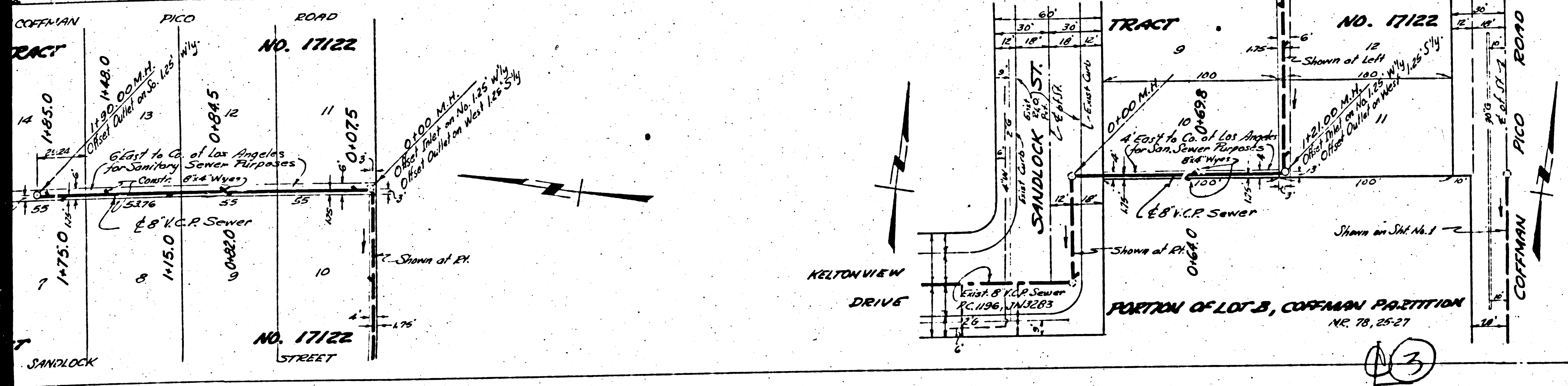
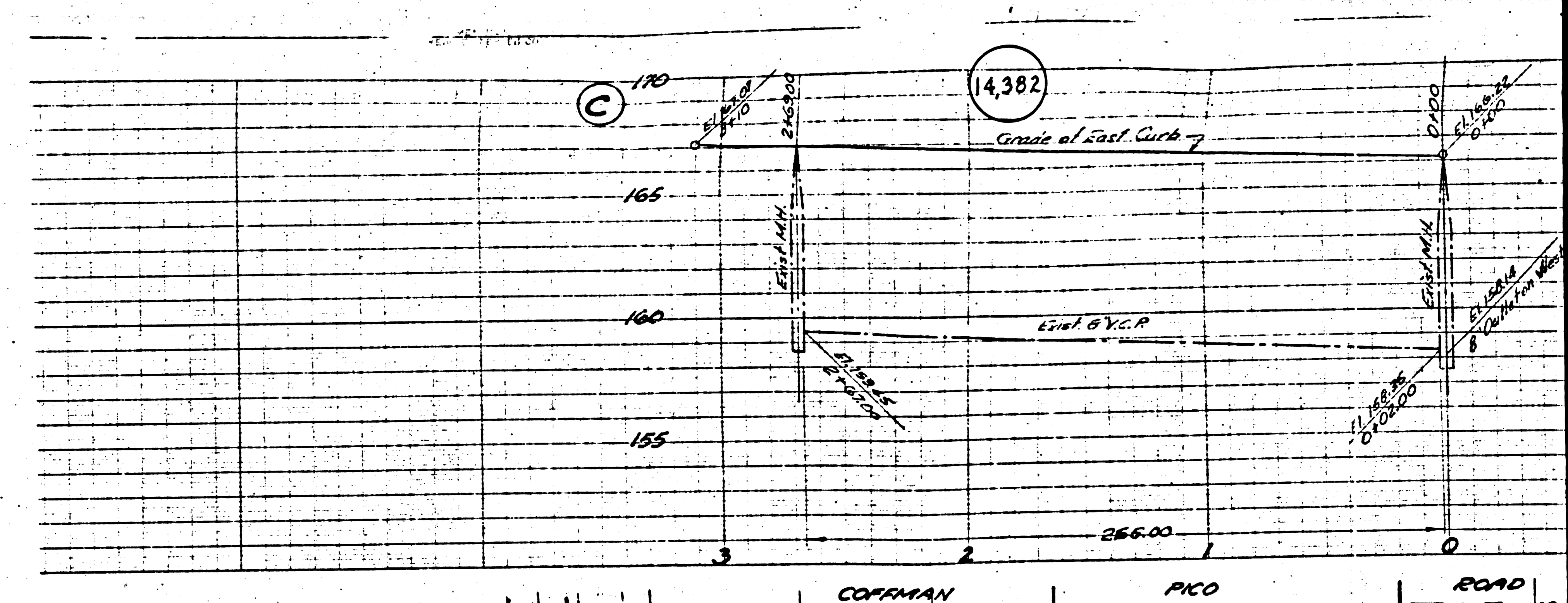
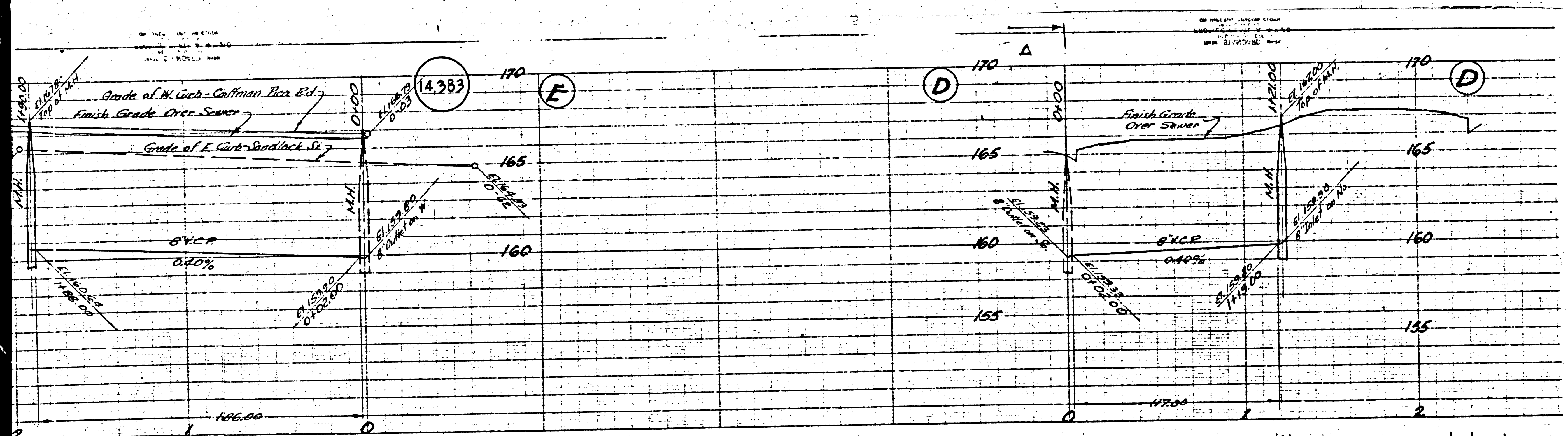


APPROVED, *William J. Fox*, COUNTY ENGINEER  
 By: *PT*, Deputy  
 APPROVED BY: *AM BROWN*, Office Engineer  
 CHIEF ENGINEER SANITATION DISTRICT NO. 2  
 CHECKED BY: *H.L. Sauer*, 11-29-1951  
 OFFICE OF COUNTY ENGINEER, REG. C.E. NO. 6412







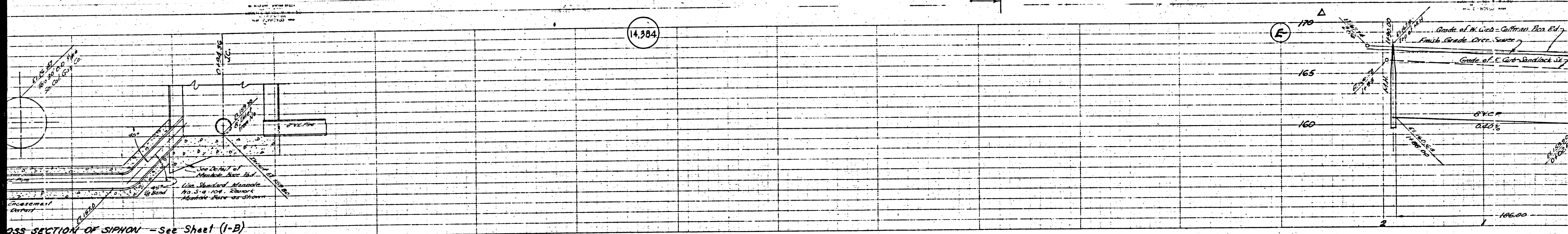


3

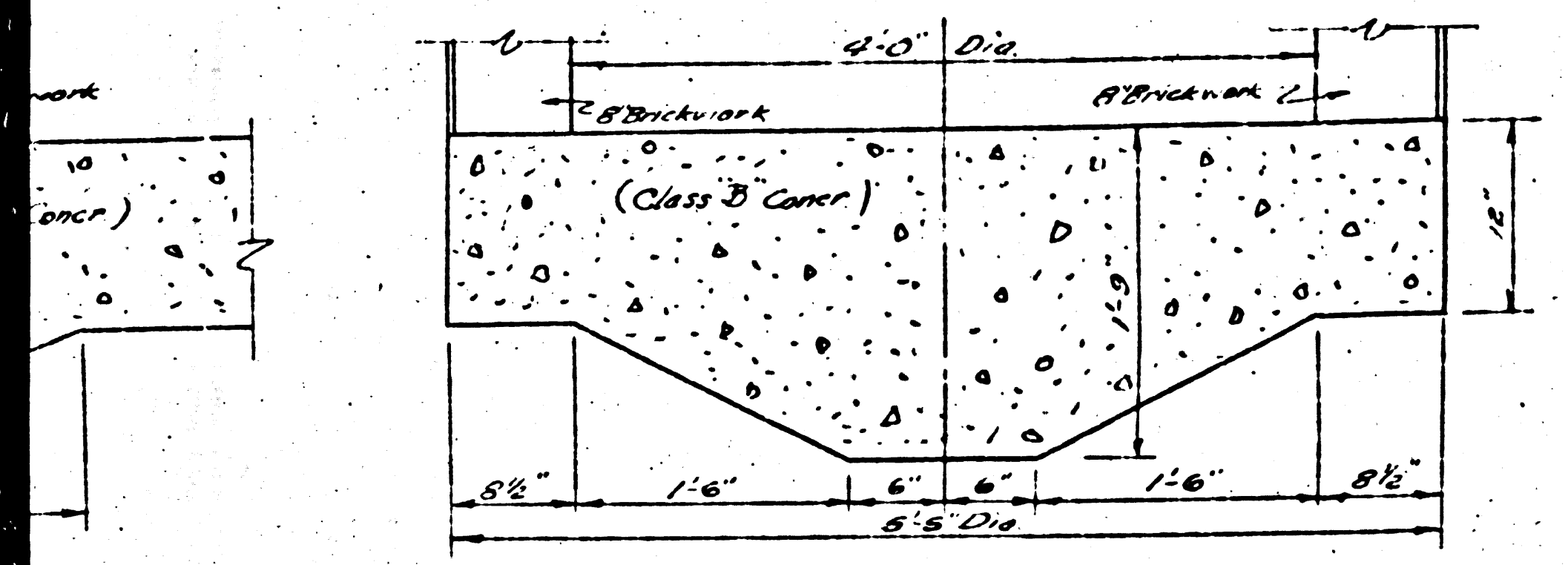
M6



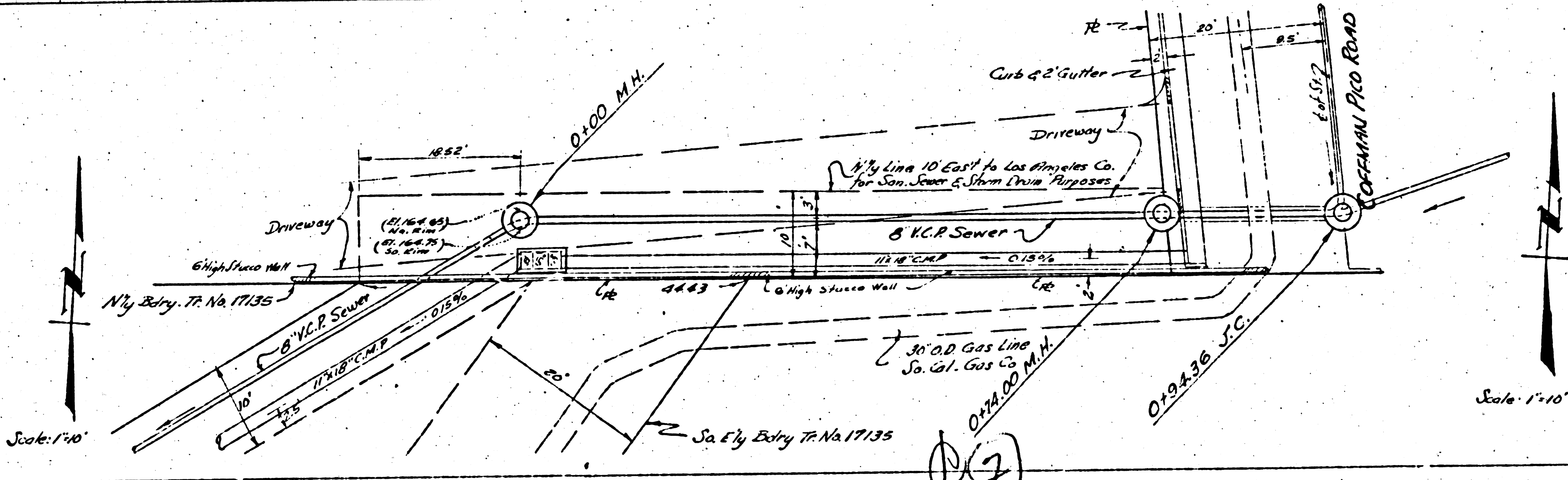
14,384



CROSS SECTION OF SIPHON - See Sheet (I-B)

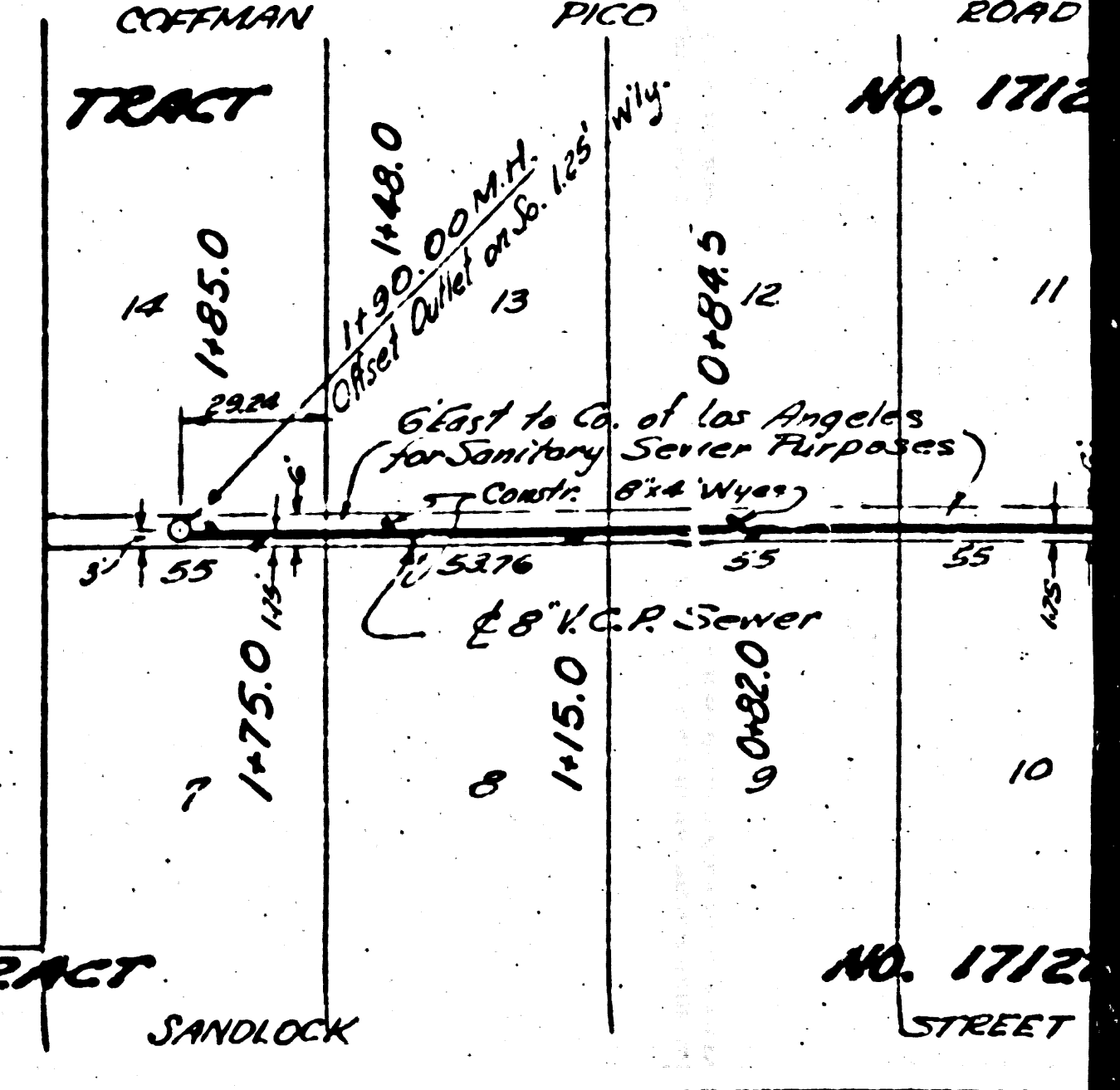


DETAIL OF MANHOLE BASE P.M.D. Scale: 1"=1'-0"



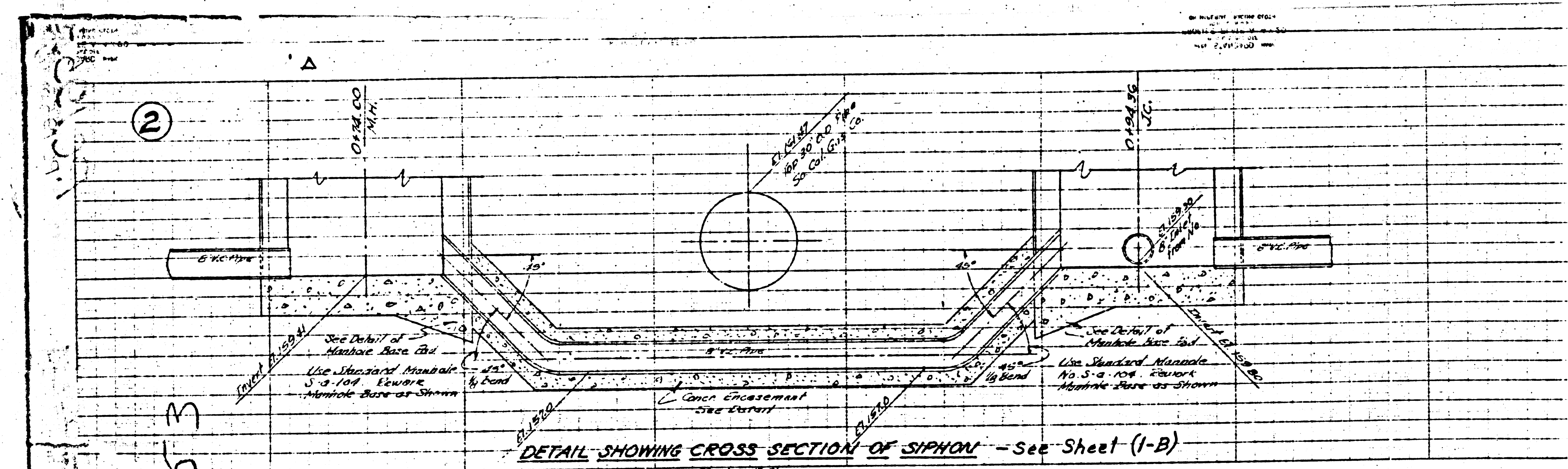
Scale: 1"=10'

Scale: 1"=10'



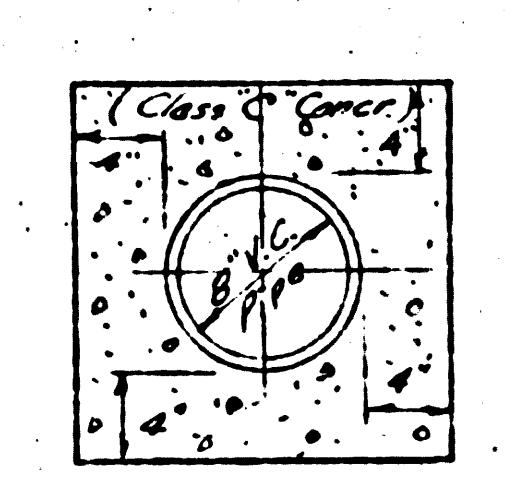
(7)



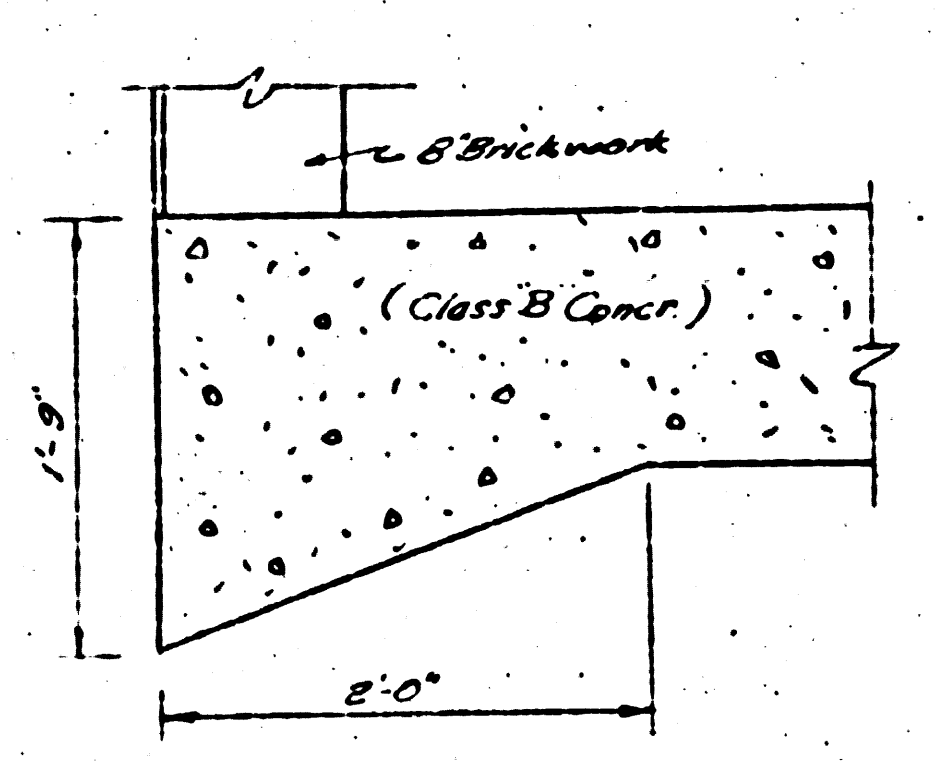


DETAIL SHOWING CROSS SECTION OF SIPHON - see Sheet (1-B)  
Scale: 1/2"

JAMES EXPANDED SIPHON DESIGN  
 GEORGINA DESIGN DIVISION SHEET  
 SHEET NO. 5 OF 5 SHEETS  
 DRAWING NUMBER - 1953  
 JAN 1953



DETAIL  
PIPE ENGAGEMENT  
Scale: 1/4"



DETAIL OF MANHOLE BASE PAD  
Scale: 1/4"

