

BY WILLIAM J. FOR COUNTY ENGINEER
DATE OF ISSUE: 1952
BY: [Signature]

TEMPLE CITY

7,700

B.M. T.E. 28 L.L.C. 323523 San. Dept. P.R. 1422-40
S.E. corner Cleverly & Warner - 4' East of East end
of curb return
Beat stake in curb

PROFILE, ALIGNMENT AND GRADE OF
SANITARY SEWERS
TO BE CONSTRUCTED IN

SANITARY SEWER RIGHT OF WAY IN LOT 17 OF MISSION VIEW ACRES M.B. 12-150

PRIVATE CONTRACT NO 1258

W.S. 44

SHEET 1 OF 3 SHEETS

VERT. SCALE 1" = 4'
HORIZ. SCALE 1" = 40' SEPTEMBER 1951

PREPARED BY Leon W. Mori
R.E. 3137

FOR LEGEND
SEE PLAN NO S-O-64

Note:
Grades to which this improvement is to be constructed are shown on plans and profile. Grade points for top of curb, center line of street or center line of alley are shown by circles on profiles. At all points between designated points the grade shall be established so as to conform to a straight line drawn between said designated points. Elevations are in feet above U.S.G.S. Datum or Mean Sea Level.
This drawing and the data hereon are hereby made a part of the specifications. Work shall be constructed according to specifications on file in the office of the County Engineer and shall be prosecuted only in the presence of the County Engineer. Before work can be started the contractor must obtain a permit to excavate in County Streets from the L.A. County P.D. Dept. 211 S. Main St. and make a deposit with the County Engineer 228 L.A. Co. Engineering Bldg. sufficient to cover cost of construction inspection and record plans.
Approval of this plan by the County of Los Angeles does not constitute a representation as to the accuracy of the location of or the existence or non-existence of any underground utility, pipe or structure within the limits of this project.

COUNTY OF LOS ANGELES, CALIFORNIA
WILLIAM J. FOR COUNTY ENGINEER
APPROVED BY [Signature] AM. Rowe
CHIEF ENGINEER OF Office Engineer
County Sanitation Dist. No. 15

CHECKED BY [Signature] 10-10-1951
Office of the County Engineer Reg. C.E. No. 24412

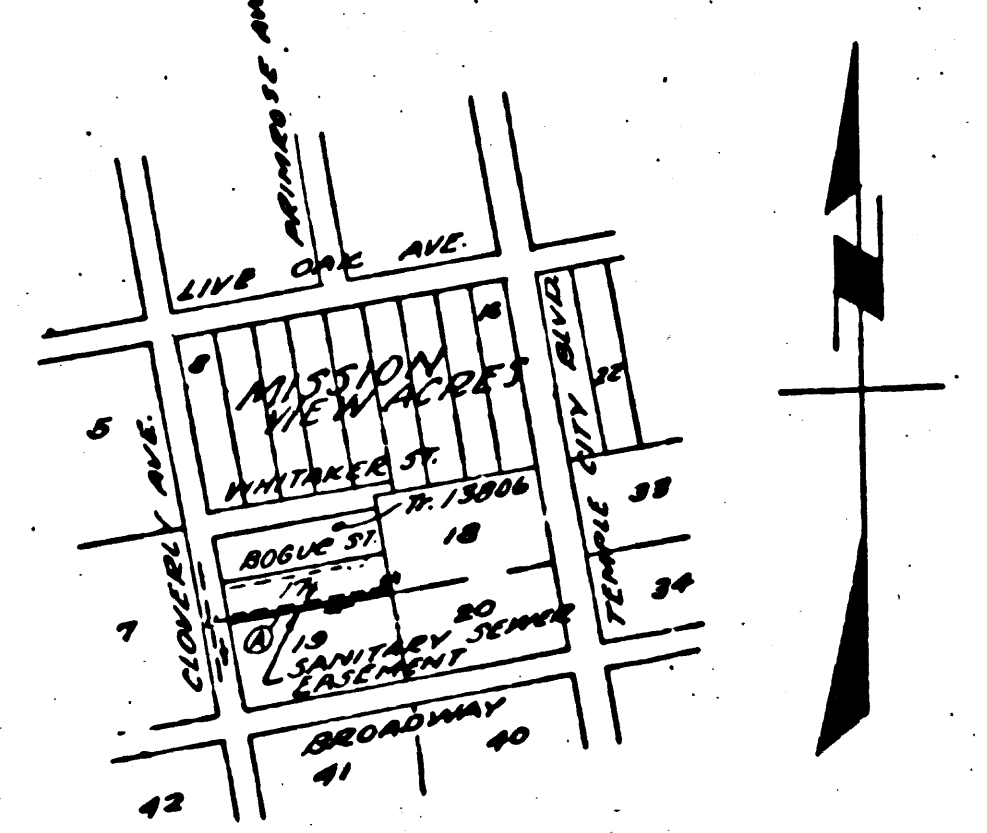
RECEIVED
OCT 27 1952
L.A. COUNTY ENGINEER
SANITATION DIVISION

MISSION VIEW ACRES M.B. 12-150
LOT 17
B.C. 1988
W.S. 44
SHEET 1 OF 3 SHEETS
SEPTEMBER 1951

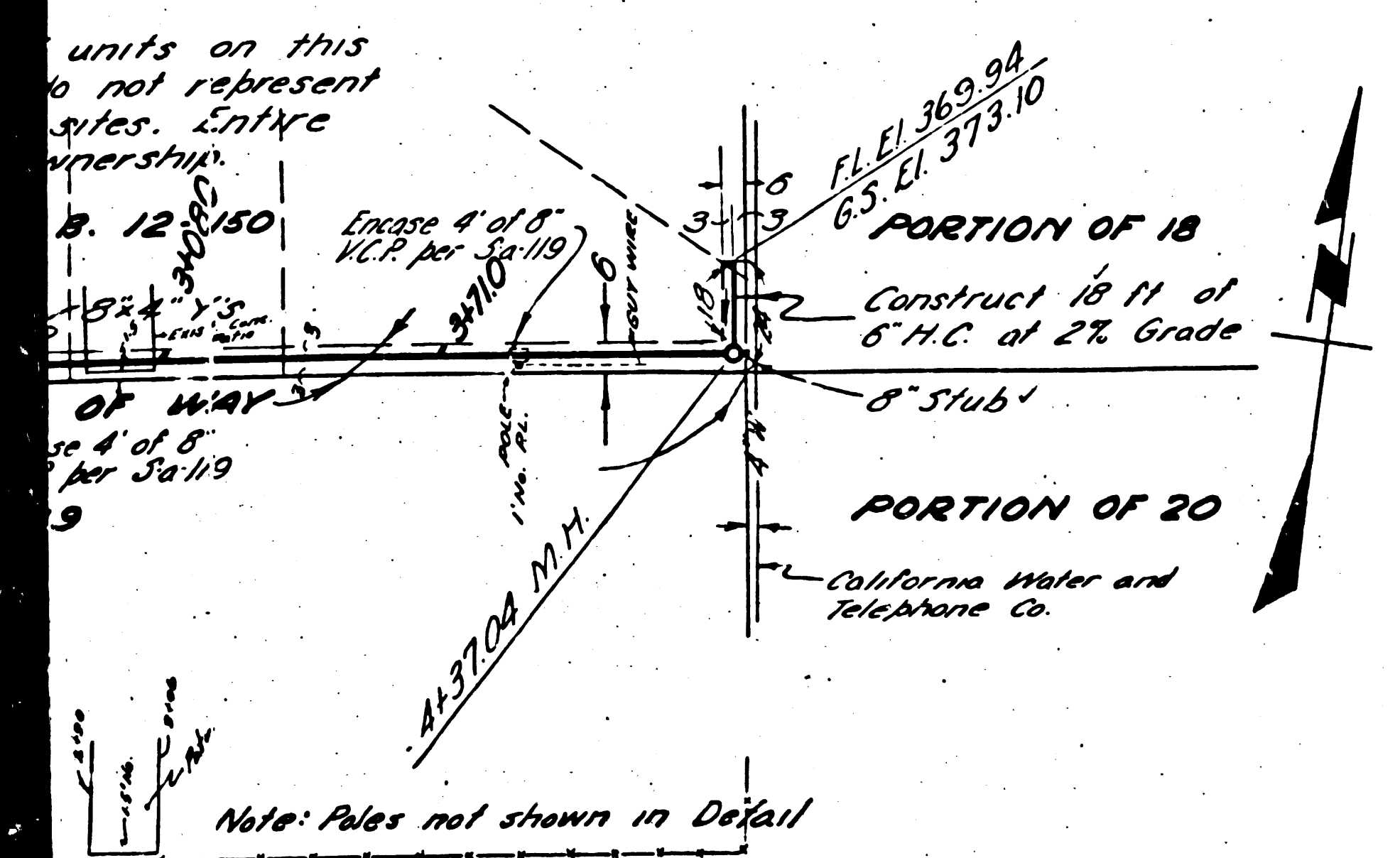
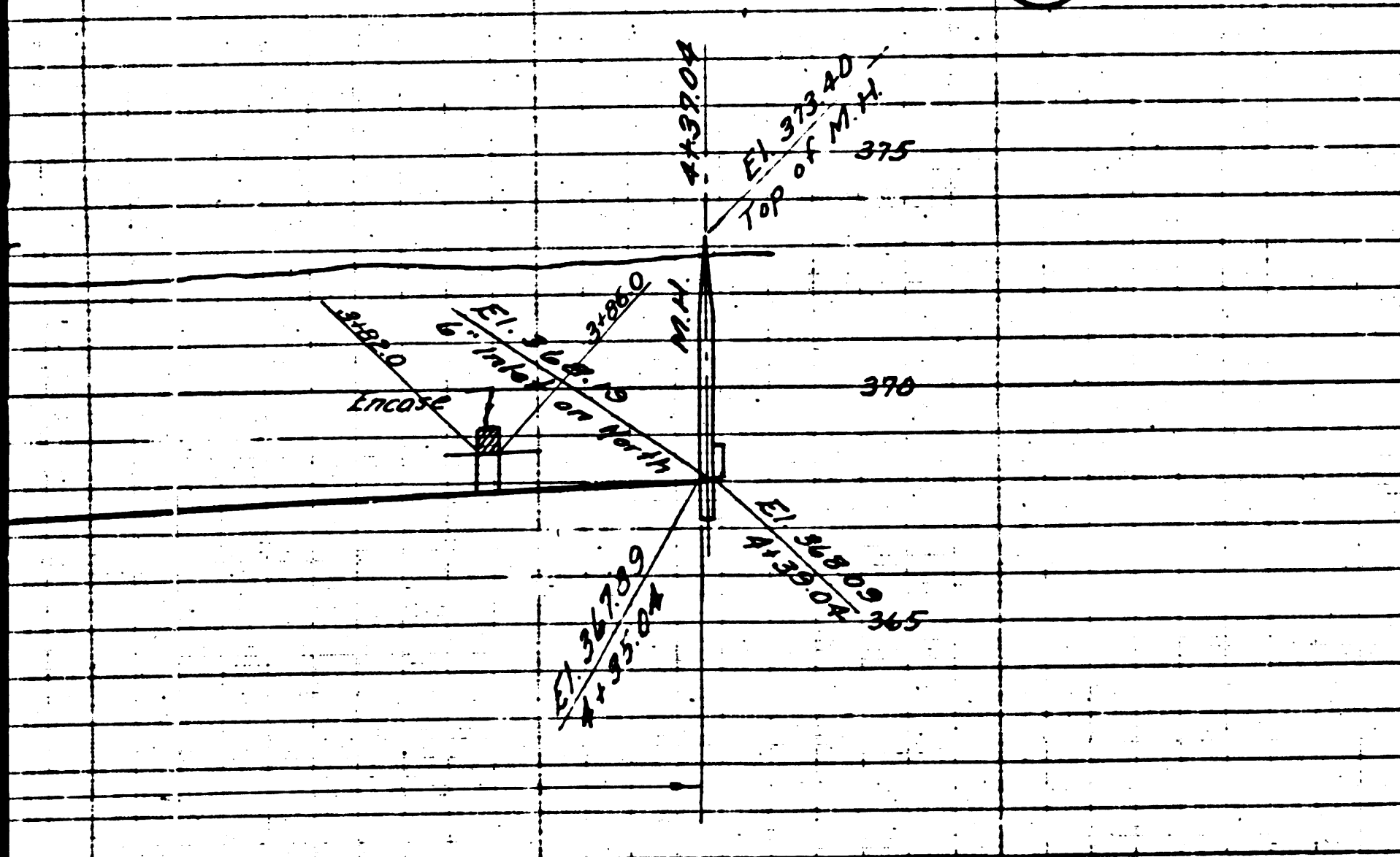
- (1) Use Standard Manhole Frame and Cover, S-o-117 (Except as noted)
- (2) Use Standard Strength Pipe
- (3) Use Cement Mortar for all vitrified clay pipe joints
- (4) Resurface all trench within paved area to meet Los Angeles County Rd. Dept. requirements in accordance with the permit
- (5) All structures shall be brick sewer structures, S-o-104 (Except as noted)
- (6) Stoppers to be installed with joint compound by manufacturer of his plant. Specs. Sec. 33, 44.
- (7) Construct tops of all structures in right of way 6" above finished grade.
- (8) Encase 4 feet of sewer at points of interference with poles as per S-o-119
- (9) Install wire and tags per Specs. Sec. 48

Note:
No representative of the County Engineer will survey or lay out any portion of the work. The owner or his authorized representative will furnish the County Engineer with grade sheets and stations of all house connections and Y-branches and shall provide stakes for them at their proper locations with staking plainly marked. Any change of location shall be requested in writing by the owner or his representative. No revisions shall be made in these plans without approval of the County Engineer.

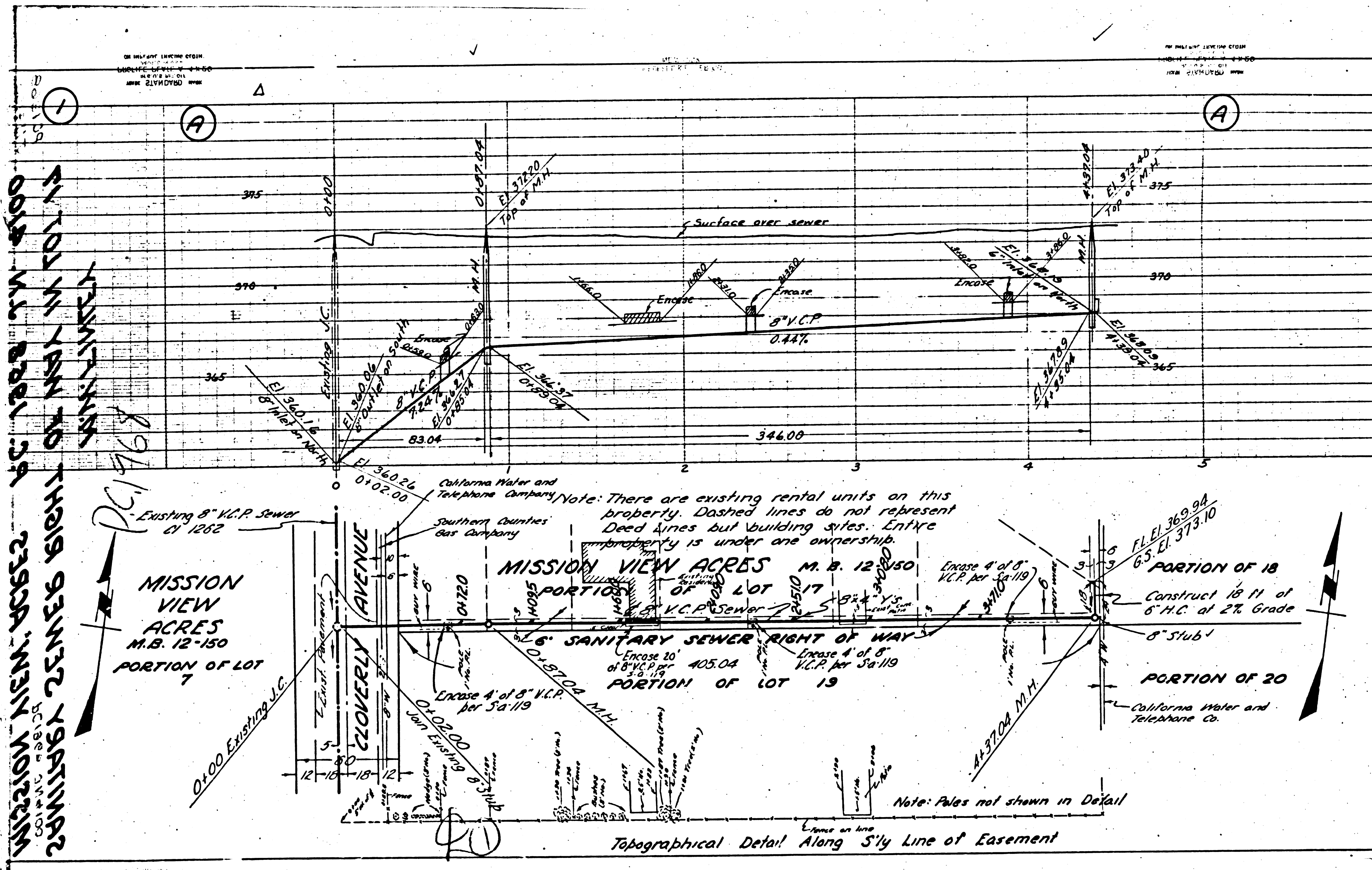
Note:
Provide stakes on the property lines or property lines produced, at right angles to the sewer line of the center line of each manhole.



Index Map
Scale 1" = 400'
P.C. 1953
J.N. 4100



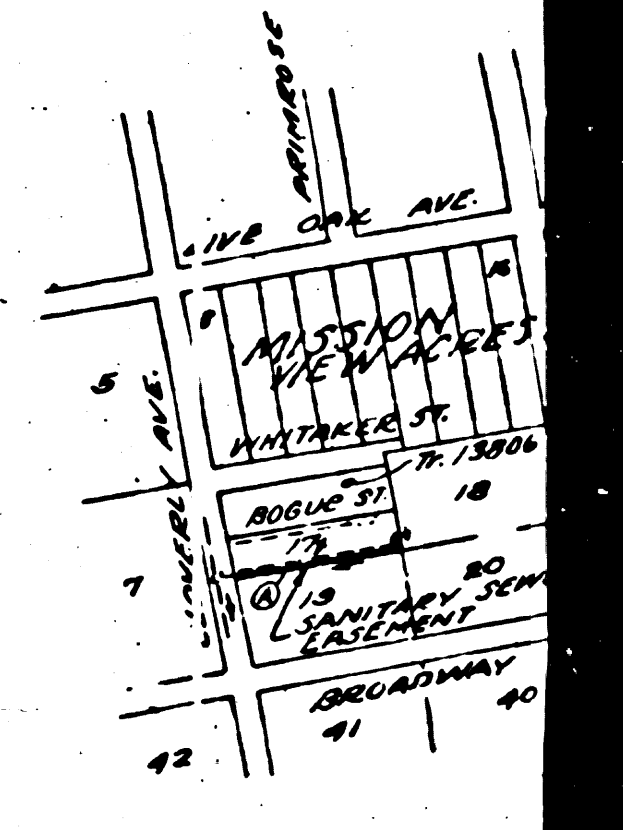
Note: Poles not shown in Detail
5'ly Line of Easement



TEMPLE
 15,700
 1911 JUL 20 ELEV. 372.522 Sun. Day
 S.E. corner Cloverly & Walker - 4
 of curb return
 Post - strike in curb

- (1) Use Standard Manhole Frame and
 - (2) Use Standard Strength Pipe
 - (3) Use Cement Mortar for all vitrified
 - (4) Resurface all trench within paved
 - (5) All structures shall be built sewer st
 - (6) Stoppers to be installed with joint
 - (7) Construct tops of all structures in r
 - (8) Encase a seat of sewer at points of
 - (9) Install wire and faws per Specs
- No representative of the County Engineer
 The owner or his authorized representative
 sheets and stations of all house con
 stakes for them at their expense. A
 change of location shall be request
 No revisions shall be made in these p

Note: Provide stakes on the property lines of
 angles to the sewer line of the center



Index Map
 scale 1
 P.C. 1955
 J.N. 4100

MISSISSIPPI RIVER
 2392N NEW YORK ST
 0015 N.W. 8th St
 PC 1768

MISSION VIEW ACRES
 M.B. 12-150
 PORTION OF LOT 7

MISSION VIEW ACRES
 M.B. 12-150
 PORTION OF LOT 19

PORTION OF 18
 Construct 18" of
 6" H.C. at 2% Grade
 8" sub 1

PORTION OF 20
 California Water and
 Telephone Co.

Topographical Detail Along S'y Line of Easement