

**BELLFLOWER**

- (1) USE STANDARD MANHOLE FRAME AND COVER S-a-117
- (2) USE STANDARD STRENGTH PIPE
- (3) USE CEMENT MORTAR FOR ALL VITRIFIED CLAY PIPE JOINTS
- (4) RESURFACE ALL TRENCH WITHIN PAVED AREA TO MEET LOS ANGELES COUNTY ROAD DEPT. REQUIREMENTS IN ACCORDANCE WITH THE PERMIT
- (5) CONSTRUCT HOUSE CONNECTIONS WITH INVERT AT PROPERTY LINE 5 FEET BELOW CURB GRADE
- (6) ENCASE FOUR FEET OF SEWER AT POINTS OF INTERFERENCE WITH POLES AS PER S-a-118
- (7) ALL STRUCTURES SHALL BE BRICK SEWER STRUCTURES S-a-104
- (8) CONSTRUCT TOPS OF ALL STRUCTURES IN RIGHTS OF WAY 6" ABOVE FINISHED GRADE.

NOTE:  
No Representative of the County Engineer will survey or lay out any portion of the work. The owner or his authorized representative shall furnish the County Engineer with grade sheets and stations of all house connections and Y branches and shall provide stakes for them at their proper locations with stationing plainly marked. Any change of location shall be requested in writing by the owner or his representative. No revisions shall be made in these plans without approval of the County Engineer.

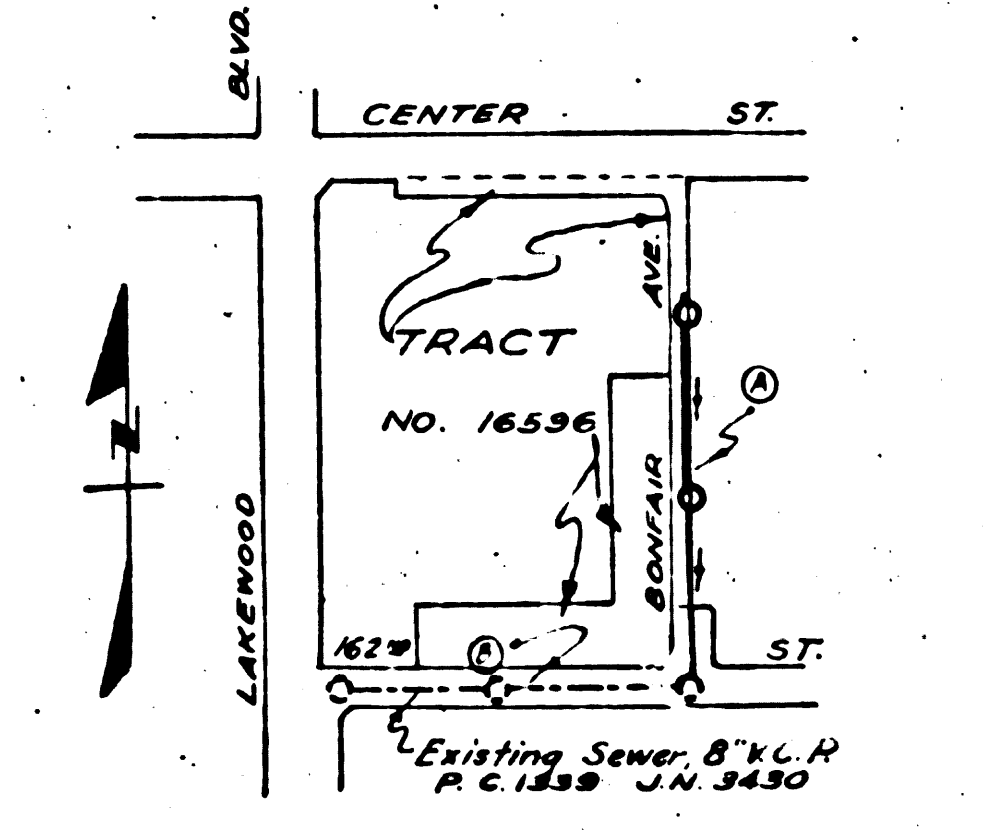
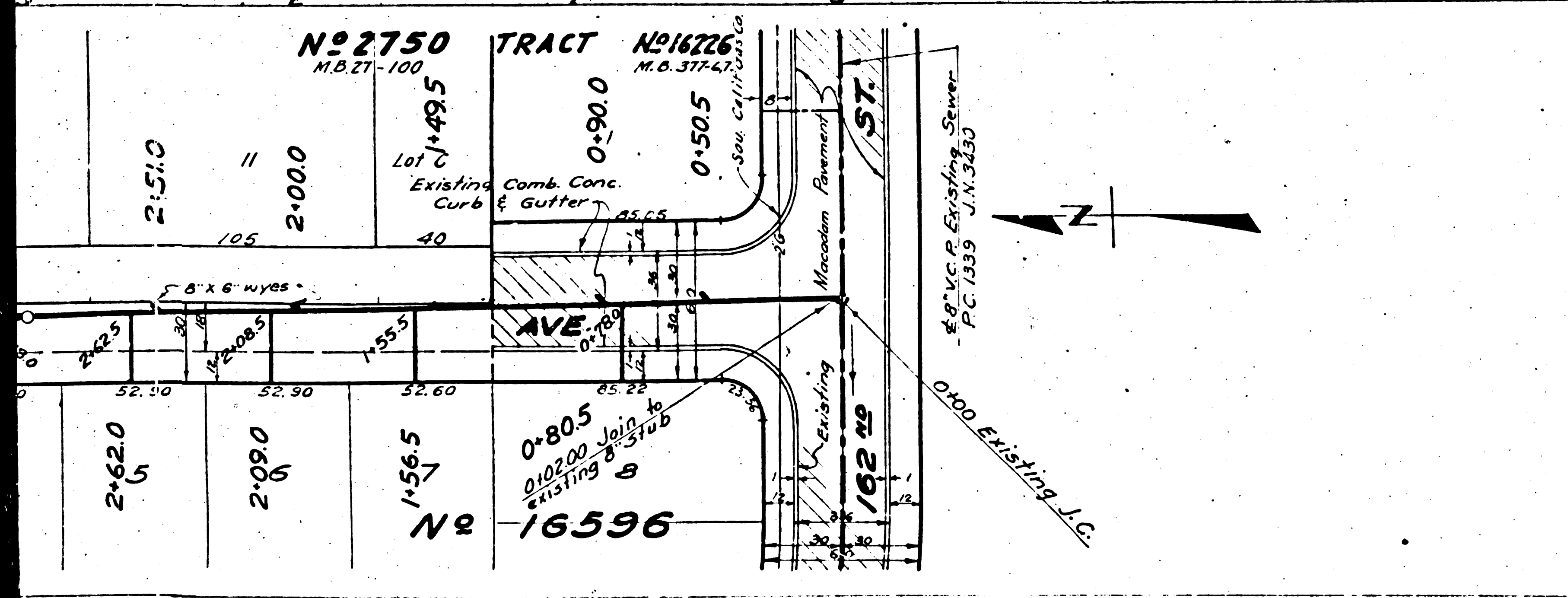
NOTE:  
Provide stakes on the property lines or property lines produced at right angles to the sewer line of the center line of such manholes. Concrete pavement to be cut not less than 2 inches in depth with a concrete saw. See specification NR 65. Stoppers to be installed with joint compound by Manufacturer of his plant Specification section 33, 42.

PROFILE, ALIGNMENT, AND GRADE OF  
**SANITARY SEWERS**  
TO BE CONSTRUCTED IN  
**BONFAIR AVENUE**  
BETWEEN 162<sup>ND</sup> ST. AND 600 FEET NORTHERLY THEREOF  
**162<sup>ND</sup> STREET**  
BETWEEN LAKEWOOD BLVD. AND BONFAIR AVENUE  
IN TRACT NO. 16596 M.B.  
PRIVATE CONTRACT NO. 1075  
W. S. 33  
SHEET 1 OF 1 SHEET  
NOVEMBER 1951  
PREPARED IN THE OFFICES OF  
WM. H. FAIR JR.

BY: *Shamatha Johnson*  
REG. C.E. No. 5828  
FOR LEGEND  
SEE PLAN NO. S-a-64

NOTE:  
Grades to which this improvement is to be constructed are shown on plans and profile. Grade points for top of curb, center line of street or center line of alley are shown by circles on profiles. At all points between designated points the grade shall be established so as to conform to a straight line drawn between designated points. Elevations are in feet above U.S.G.S. datum or mean sea level. This drawing and the data hereon are hereby made a part of the specifications. Work shall be constructed according to specifications on file in the office of the County Engineer and shall be prosecuted only in the presence of the County Engineer. Before work can be started the contractor must obtain a permit to excavate a County Street, from the L.A. County Road Department, 211 So. Main St. and to make a deposit with the L.A. County Engineer or Construction Inspector, City, sufficient to cover the cost of work to be done in a State Highway, a permit must be obtained from the State of California, Division of Highways. No deposit is required after making the deposit with the County Engineer. Approval of this plan by the County of Los Angeles does not constitute a representation as to the accuracy of the location or of the existence or non-existence of any underground pipe, utility or structure within the limits of the project.  
COUNTY OF LOS ANGELES, CALIFORNIA

APPROVED *WM. J. FOX* COUNTY ENGINEER  
BY: *A. H. Legoy* CHIEF DEPUTY  
APPROVED BY: *A. M. RAWN* CHIEF ENGINEER OF COUNTY SANITATION DISTRICT NO. 2  
CHECKED BY: *John A. Romano* 12-5-51  
OFFICE OF COUNTY ENGINEER, H.H.C. NO. 7884



INDEX MAP  
P.C. 1978  
S.A. 4107  
SCALE: 1" = 400'

T.Y. 4107  
 H.C. 1075  
 S.C. 1075

