

14,875

THE CONTRACTOR SHALL BE RESPONSIBLE FOR THE PROTECTION OF ALL UTILITIES WHICH MAY BE ENCOUNTERED IN THE COURSE OF CONSTRUCTION. HE SHALL BE RESPONSIBLE FOR THE PROTECTION OF ALL UTILITIES WHICH MAY BE ENCOUNTERED IN THE COURSE OF CONSTRUCTION.

ALL MANHOLE COVERS TO BE SLOPED 2% TO SOUTH IN CONFORMANCE WITH STREET BRIDGE.

EXTREME CARE SHOULD BE EXERCISED IN EXCAVATION IN THE MID AREA BETWEEN MANHOLES BECAUSE ANY MISALIGNMENT OF WATER LINE COULD RESULT IN CASE IN THE CENTER OF SEWER LINE IS THEORETICALLY 8 FEET FROM CENTER OF WATER LINE AT ITS CLOSEST POINT. DEPTH OF WATER LINE PURPORTED TO BE 4' TO 4 1/2'. CARE SHOULD BE TAKEN WHEN EXCAVATING FOR HOUSE CONNECTION TO AVOID "M.T.D."

INSTALL WIRE & TAPS ON Y'S PER SPEC'S, SEC. 44

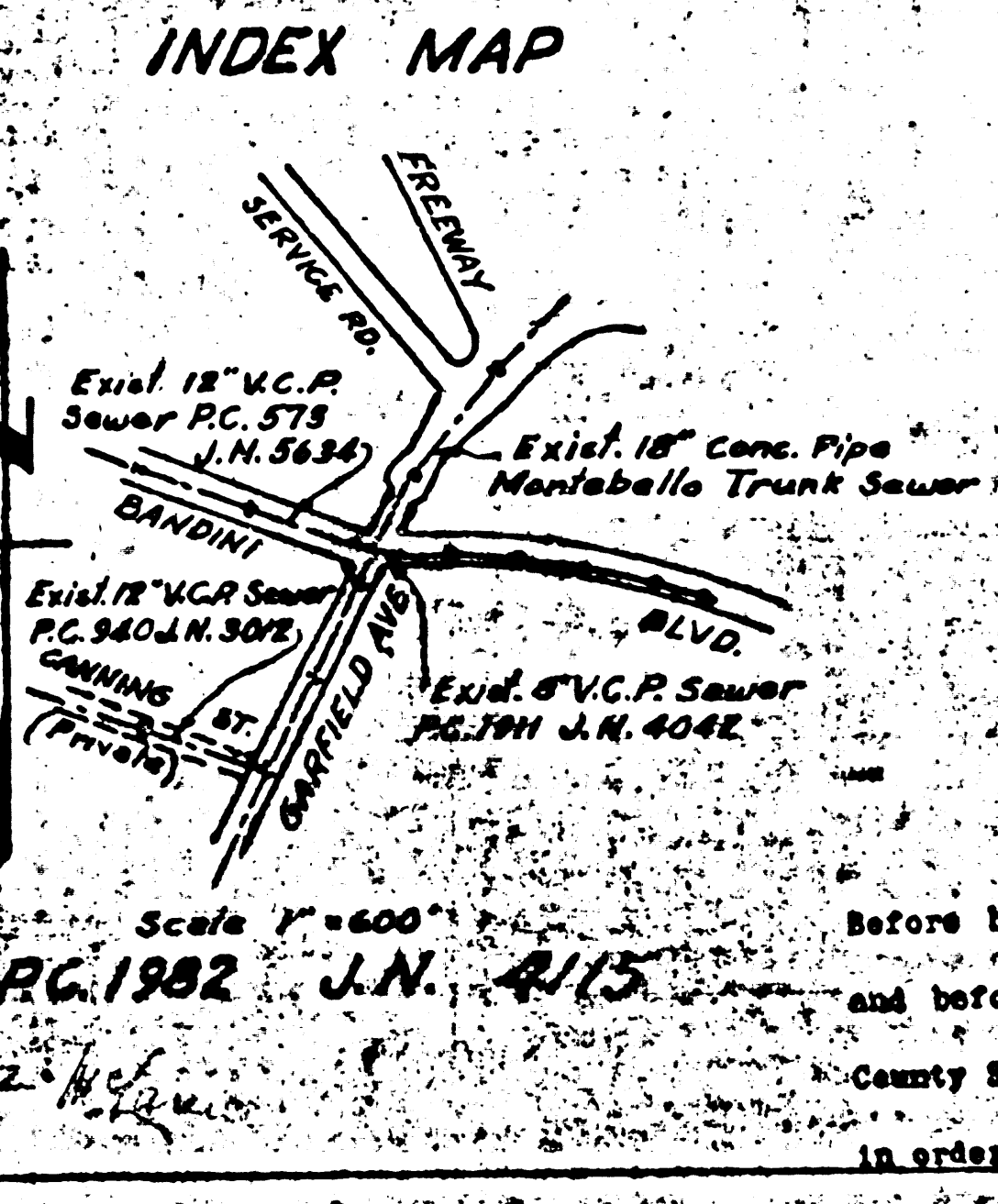
14,875

LINE ALIGNMENT AND BENCH MARK
SANITARY SEWERS
TO BE CONSTRUCTED BY
BLANDINI BLVD.

PRIVATE CONTRACT NO. 1982
J.N. 415
200' SHEET

APPROVED IN THE OFFICE OF
RALPH B. ROSENBERG
COUNTY ENGINEER

NOTE TO CONTRACTOR:
ALL MANHOLE COVERS TO BE SLOPED 2% TO SOUTH IN CONFORMANCE WITH STREET BRIDGE.
EXTREME CARE SHOULD BE EXERCISED IN EXCAVATION IN THE MID AREA BETWEEN MANHOLES BECAUSE ANY MISALIGNMENT OF WATER LINE COULD RESULT IN CASE IN THE CENTER OF SEWER LINE IS THEORETICALLY 8 FEET FROM CENTER OF WATER LINE AT ITS CLOSEST POINT. DEPTH OF WATER LINE PURPORTED TO BE 4' TO 4 1/2'. CARE SHOULD BE TAKEN WHEN EXCAVATING FOR HOUSE CONNECTION TO AVOID "M.T.D."



FOR LEGEND:
See Plan No. 6-2-64

NOTE:
ELEVATIONS ARE IN FEET ABOVE U.S.S. DATUM OF MEAN SEA LEVEL.
THIS DRAWING AND THE DATA HEREON ARE HEREBY MADE A PART OF THE SPECIFICATIONS AND SHALL BE CONSIDERED ACCORDING TO SPECIFICATION BY THE OFFICE OF THE COUNTY ENGINEER AND SHALL BE PROTECTED ONLY IN THE PRESENCE OF THE COUNTY ENGINEER. BEFORE WORK CAN BE STARTED THE CONTRACTOR MUST OBTAIN A PERMIT TO EXCAVATE IN CITY STREETS FROM LOS ANGELES COUNTY ROAD DEPARTMENT, 10 WEST 8th ST. AND MAKE A DEPOSIT WITH THE COUNTY ENGINEER THE COUNTY ENGINEERING BUILDING SUFFICIENT TO COVER COST OF CONSTRUCTION AND THE TWO AND FIFTY PER CENT.

IF WORK IS TO BE DONE IN A STATE HIGHWAY, A PERMIT MUST BE OBTAINED FROM THE STATE OF CALIFORNIA, DIVISION OF HIGHWAYS, 100 SOUTH LOS ANGELES ST. AFTER VERIFYING THE AGREEMENT WITH THE COUNTY ENGINEER.

APPROVAL OF THIS PLAN BY THE COUNTY OF LOS ANGELES DOES NOT CONSTITUTE A REPRESENTATION AS TO THE ACCURACY OF THE LOCATION OF, OR THE EXISTENCE OR CONTINUANCE OF ANY UNDERGROUND UTILITY PIPE OR STRUCTURE WITHIN THE LIMITS OF THIS PROJECT.

COUNTY OF LOS ANGELES, CALIFORNIA

APPROVED: **WILLIAM J. FINE**
COUNTY ENGINEER

APPROVED: **J. B. BISHOP**
SANITATION DISTRICT NO. 2
ENGINEER

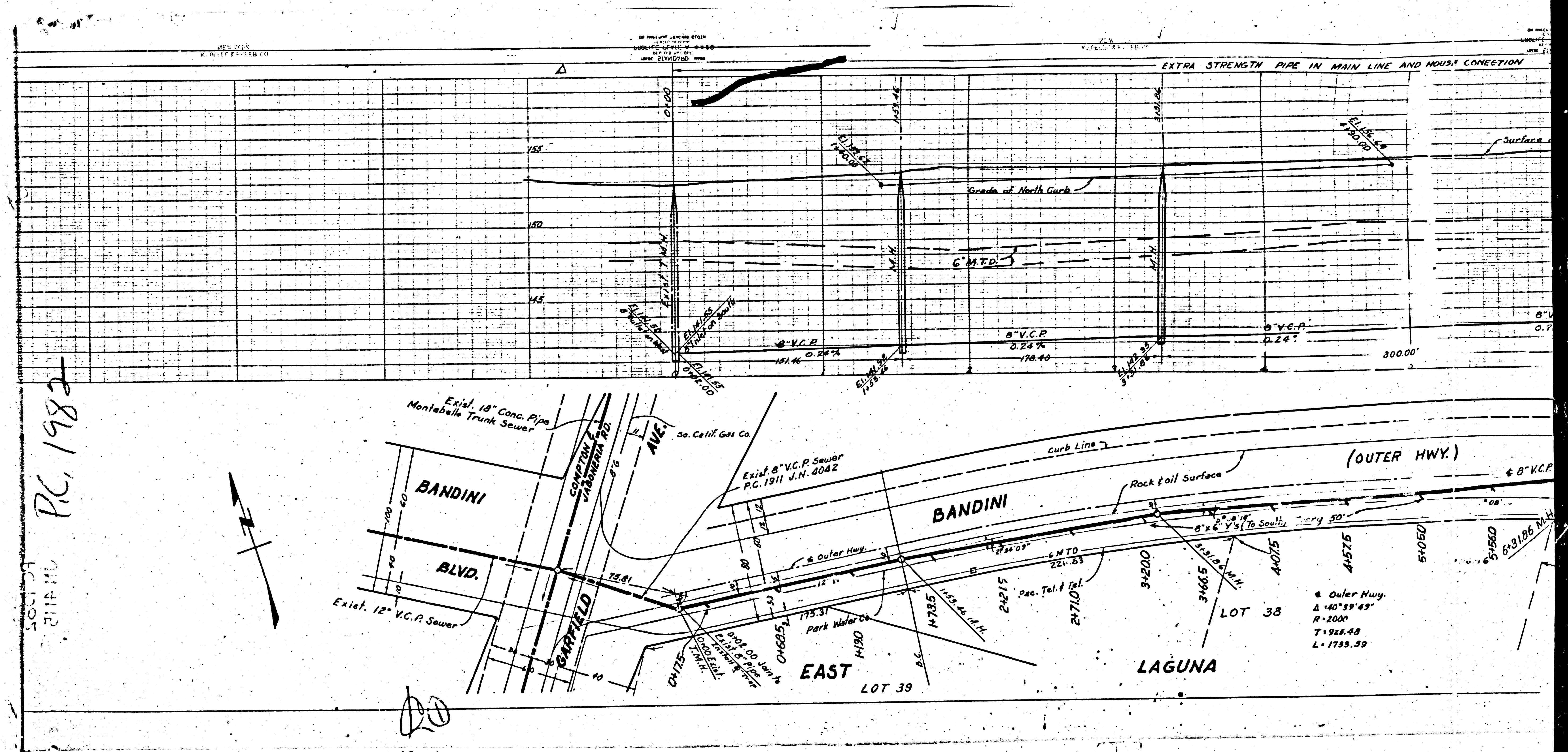
BY: **A. H. HAYES**
CRUISEBERRY
and before final acceptance of this work
County Sanitation District should be notified
in order that required inspection may be made.

Scale 1" = 600'

PG. 1982 J.N. 415

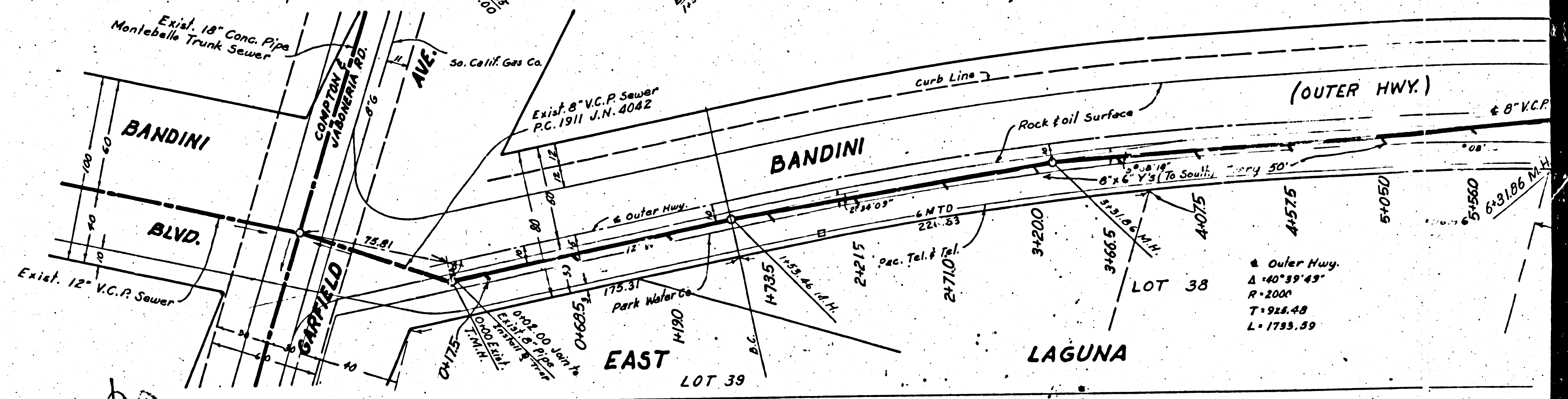
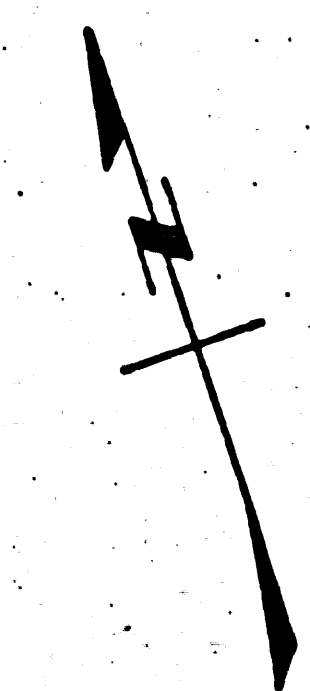
THIRD LINE

CG 385
M. A. I. E.



PC. 1982

DATE: 12/1/82



Outer Hwy.
 $\Delta 140^{\circ} 59' 45''$
 $R = 200'$
 $T = 926.48$
 $L = 1793.89$