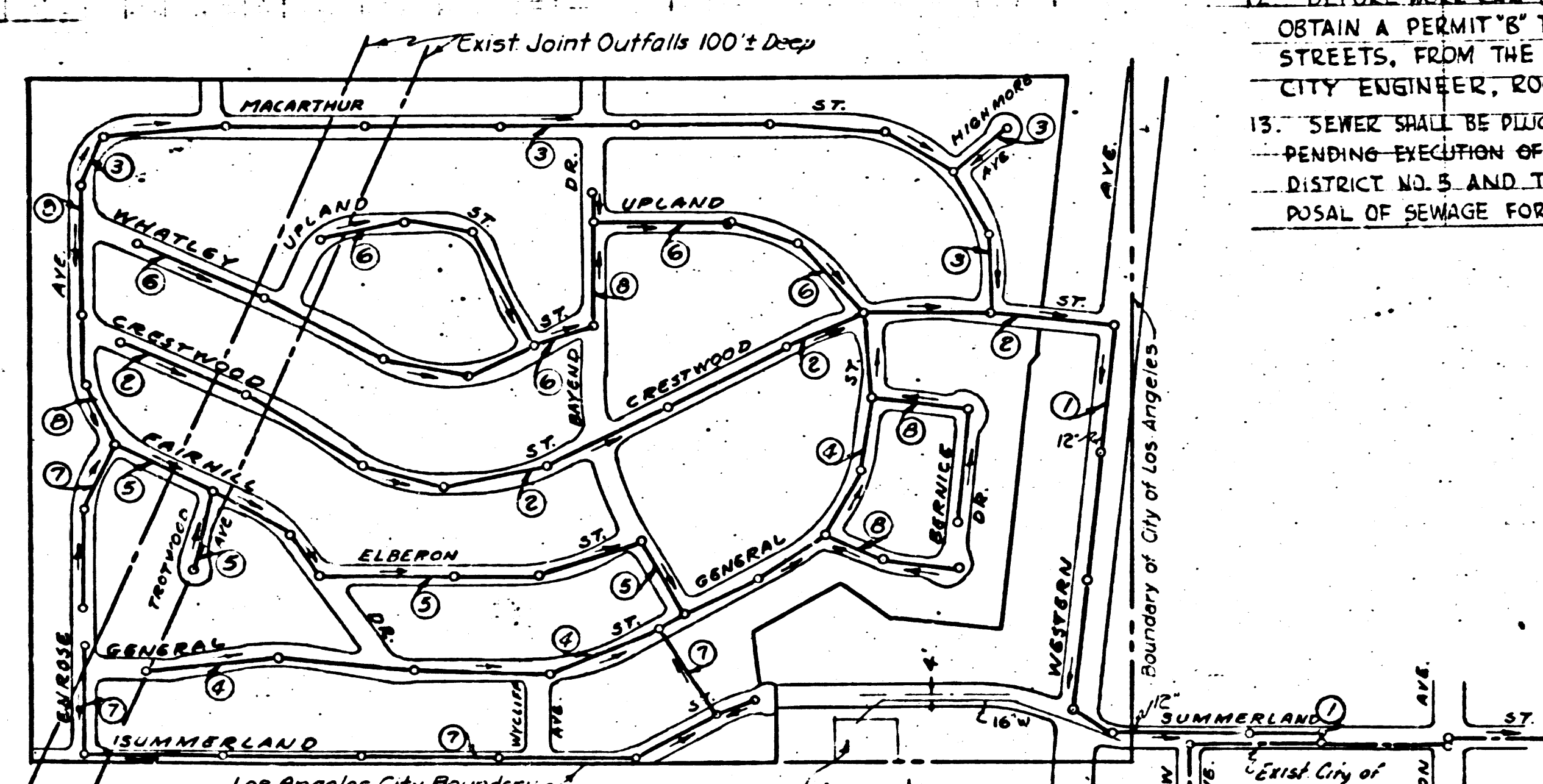


LOMITA - BLDG. DIST. 7L

BM #74 Spike in conc. mdn. 18" Deep  
50' East of E Western Ave. at station  
328+40.71 B.C. Elev 283.75 Co. Rd. Dept.  
T.B. BA 196, Page 11 T12.

17,037

SCALE



INDEX MAP  
TRACT NO. 16726  
Scale: 1" = 400'  
PC 2000  
JN 4/33

17. BEFORE WORK CAN BE STARTED THE CONTRACTOR MUST OBTAIN A PERMIT TO CONSTRUCT SEWER IN CITY STREETS, FROM THE HARBOR DISTRICT OFFICE OF THE CITY ENGINEER, ROOM 605, SAN PEDRO CITY HALL.

18. SEWER SHALL BE PLUGGED AT STATION 3551. LINE NO. 1, PENDING EXECUTION OF CONTRACT BETWEEN SANITATION DISTRICT NO. 5 AND THE CITY OF LOS ANGELES FOR DISPOSAL OF SEWAGE FOR TRACT 16726.

- NOTE: NO REPRESENTATIVE OF THE COUNTY ENGINEER WILL SURVEY OR LAY OUT ANY PORTION OF THE WORK. THE OWNER OR HIS AUTHORIZED REPRESENTATIVE SHALL FURNISH THE COUNTY ENGINEER WITH COMPLETE SHEETS, SET STATIONS FOR ALL HOUSE CONNECTIONS AND Y BRANCHES AND SHALL PROVIDE STAKES FOR THEM AT THEIR PROPER LOCATIONS WITH STATIONING PERMANENTLY MARKED. PERMITS FOR LOCATIONS SHALL BE REQUESTED IN WRITING BY THE OWNER OR HIS REPRESENTATIVE.
- NO REVISIONS SHALL BE MADE IN THESE PLANS WITHOUT APPROVAL OF THE COUNTY ENGINEER.
1. USE STANDARD MANHOLE FRAMES AND COVERS, S-117, EXCEPT AS NOTED.
  2. USE STANDARD STURLEIGH PIPE EXCEPT AS NOTED.
  3. USE PORTLAND MORTAR FOR ALL VERTICAL CLAY PIPE JOINTS.
  4. RESURFACE ALL TRENCH WITHIN PAVED AREA TO MEET L.A. COUNTY ROAD DEPT. REQUIREMENTS.
  5. ENCASE 100' FEET OF SEWER AT POINTS OF INTERFERENCE WITH PUBLIC UTILITIES.
  6. HOUSE CONNECTIONS TO BE CONSTRUCTED WITH INVERT AT PROPERTY LINE 5' FEET BELOW CURB GRATE.
  7. ALL STRUCTURES SHALL BE BRICK-SEWER UNLESS OTHERWISE SPECIFIED.
  8. PROVIDE 2" GAPS ON THE PROPERTY LINES OF PROPERTY LINES FROM THE RIGHT ANGLES TO THE SEWER UNLESS OTHERWISE SPECIFIED.
  9. STOPPERS TO BE INSTALLED WITH JOINT COMPOUND BY MANUFACTURER AT HIS PLANT.
  10. CONCRETE PAVEMENT TO BE CUT NOT LESS THAN 2" IN DEPTH WITH CONCRETE SAW.
  11. INSTALL WIRE & TASS PER SPECS SEC 48.

PROFILE, ALIGNMENT AND GRADE OF  
**SANITARY SEWERS**  
TO BE CONSTRUCTED IN  
**SUMMERLAND AVE.**  
BETWEEN PATTON AVE. AND WESTERN AVE.  
**WESTERN AVE.**  
BETWEEN SUMMERLAND AVE. AND CRESTWOOD ST.  
IN TRACT NO. 16726

PRIVATE CONTRACT NO. 2000  
W. S. 28  
SHEET 1 OF 8 SHEETS  
DEC 1951  
PREPARED IN THE OFFICES OF  
ENGINEERING SERVICE CORPORATION

ENGINEERING SERVICE CORPORATION	
112-A WASHINGTON B-D	
LOS ANGELES, CALIF.	PR. 2261
DESIGNED BY	TRACED BY C.G.D.
CHECKED BY R.S.E.	DESIGNED BY R.S.E.
APPROVED BY K.S.	CHECKED BY K.S.
SUBMITTED	
SUB. STRUCTURES OK	
W. S. NO. 28	DATE DEC. 1951
5950-8	SCALE 1" = 40'

NOTE: CONTRACTOR SHALL BE RESPONSIBLE FOR OBTAINING ALL NECESSARY PERMITS AND FOR THE PROTECTION OF ALL UTILITIES AND STRUCTURES TO BE AFFECTED BY THE WORK. THE CONTRACTOR SHALL BE RESPONSIBLE FOR THE PROTECTION OF ALL UTILITIES AND STRUCTURES TO BE AFFECTED BY THE WORK. THE CONTRACTOR SHALL BE RESPONSIBLE FOR THE PROTECTION OF ALL UTILITIES AND STRUCTURES TO BE AFFECTED BY THE WORK.

APPROVED: *[Signature]*  
CITY ENGINEER, CITY OF LOS ANGELES

APPROVED: *[Signature]*  
HARBOR DISTRICT ENGINEER

APPROVED: *[Signature]*  
CITY ENGINEER, CITY OF LOS ANGELES

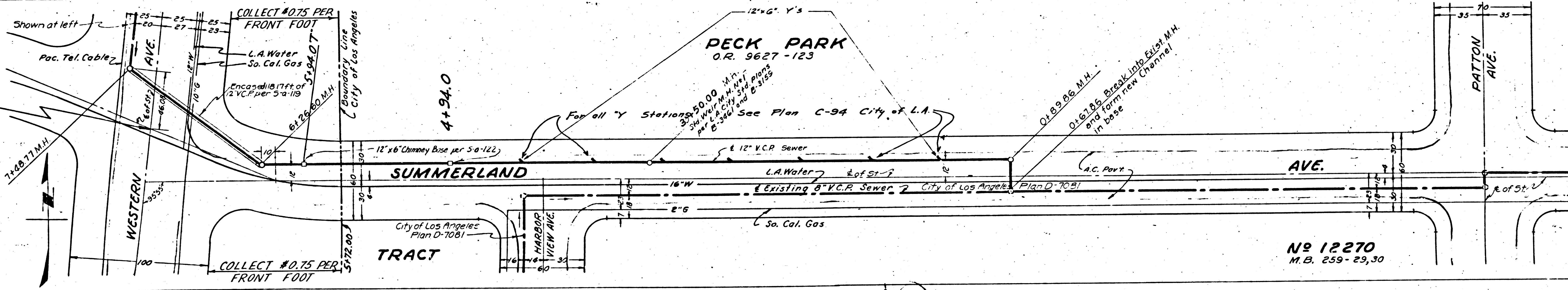
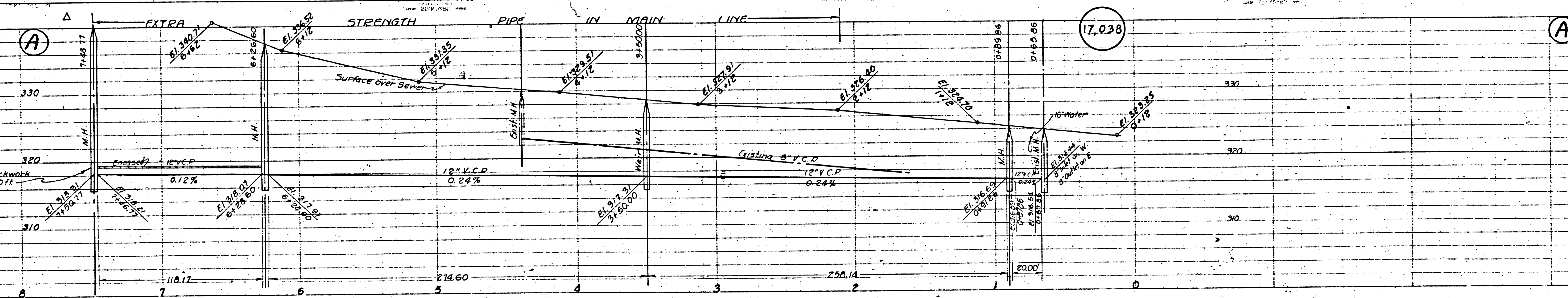
RECEIVED  
MAY 21 1953  
L. A. COUNTY ENGINEER  
SANITATION DIVISION

WESTERN AVE. PC 2000 TRACT NO. 16726

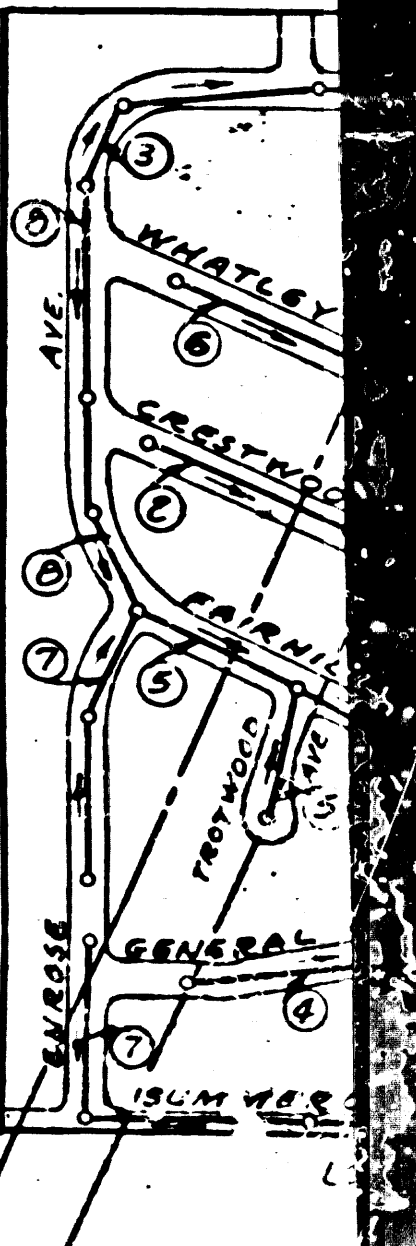
check 8.3-53 McMan  
17

B.M. #74 Spike in Cor. 50' East of E. Western 322+40.71 B.C. Elev. 285.1 E. B. & 195 Page 11

DOUBLE SCALE

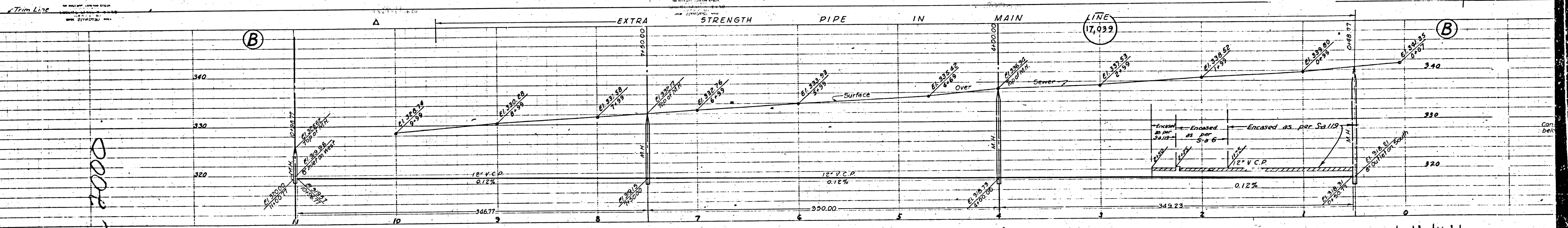


No 12270  
M.B. 259-29,30



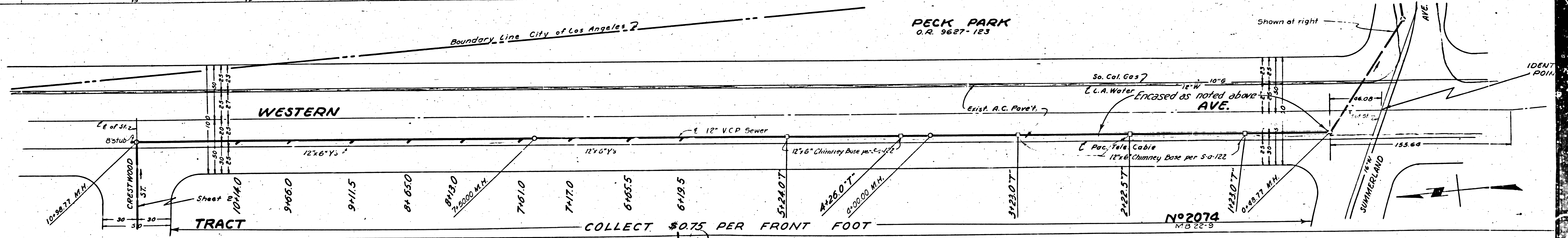
12

17.57



PC 7000

Boundary Line City of Los Angeles?  
PECK PARK  
O.R. 9627-123



COLLECT \$0.75 PER FRONT FOOT

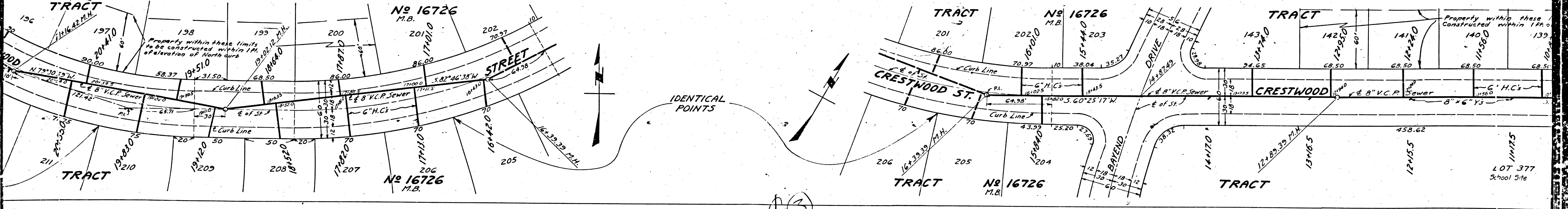
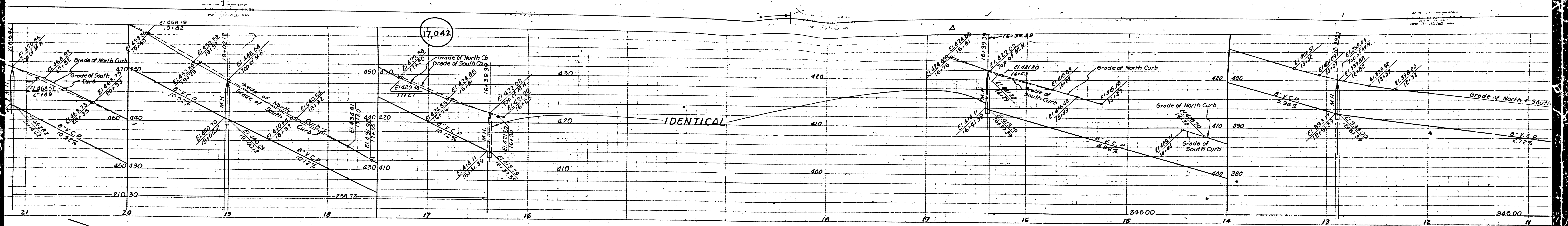
No 2074  
M.B. 22-5

Trim Line

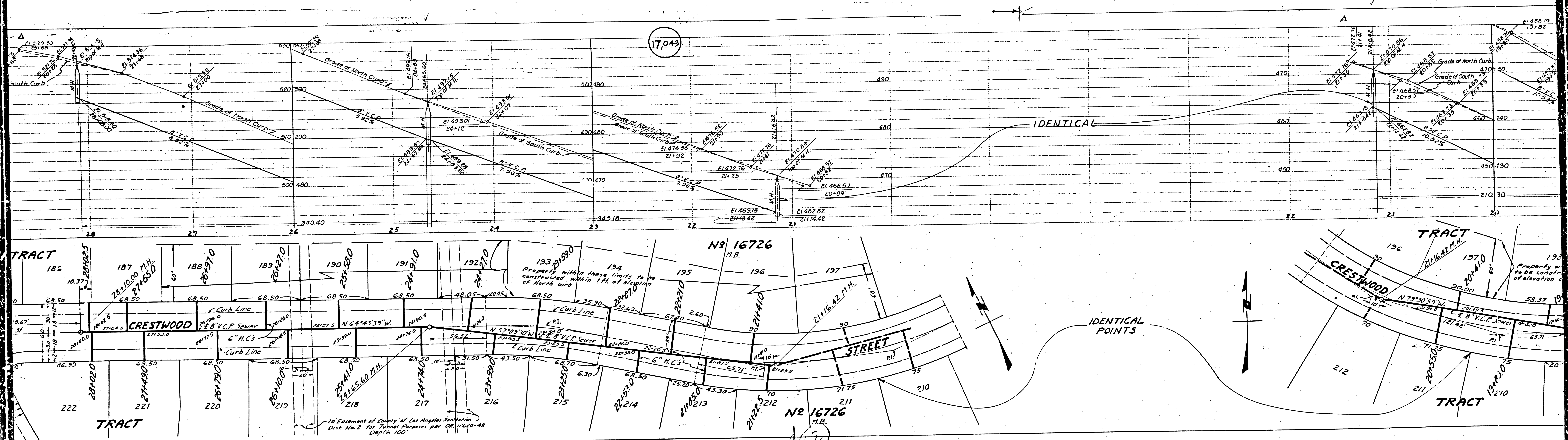
No







103



17,043

IDENTICAL

IDENTICAL POINTS

20 Easement of County of Los Angeles Sanitation  
Dist. No. 2 For Trench Pipes per Ord. 12620-48  
Depth 100"

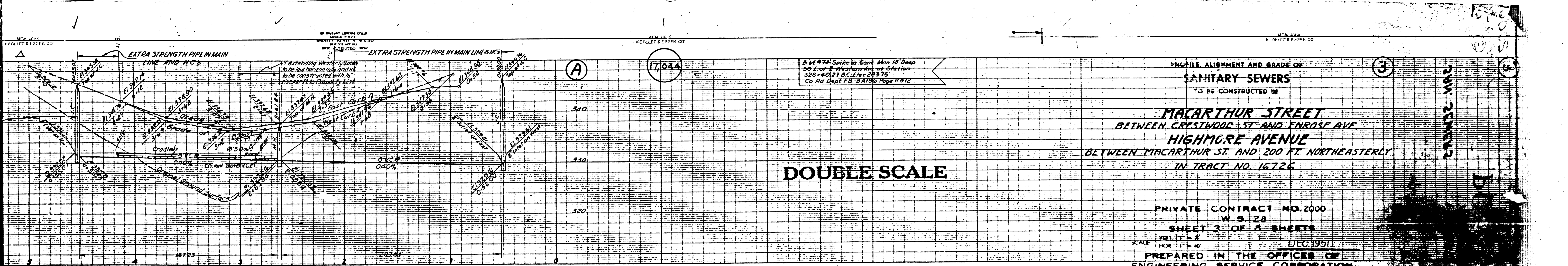
193  
Property within these limits to be  
constructed within 1 ft. of elevation  
of North curb

Property to  
be const.  
at elevation

17



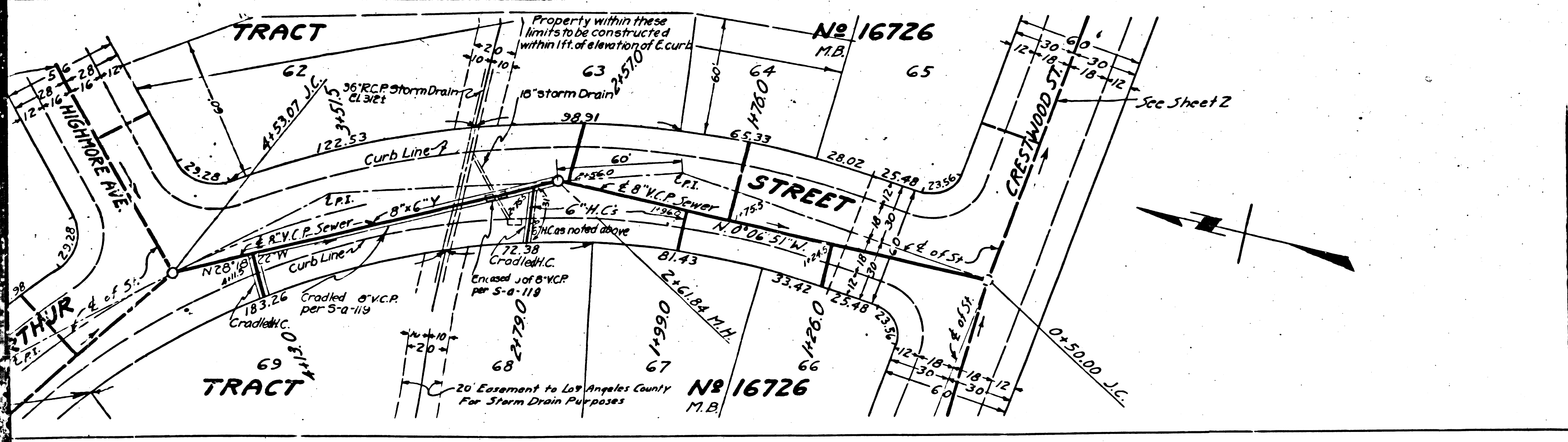




DOUBLE SCALE

YMC FILE, ALIGNMENT AND GRADE OF  
**SANITARY SEWERS**  
 TO BE CONSTRUCTED ON  
**MACARTHUR STREET**  
 BETWEEN CRESTWOOD ST AND ENROSE AVE  
**HIGHMORE AVENUE**  
 BETWEEN MACARTHUR ST. AND 200 FT. NORTHEASTERLY  
 IN TRACT NO. 16726

PRIVATE CONTRACT NO. 2000  
 W-9-28  
 SHEET 3 OF 6 SHEETS  
 DEC 1951  
 PREPARED IN THE OFFICES OF  
 ENGINEERING SERVICE CORPORATION



ENGINEERING SERVICE CORPORATION			
1127 A WASHINGTON BLVD			
LOS ANGELES 15 CALIF PR 7281			
REVISIONS			
SUB STRUCTURES CK'D			
W. O. NO.	DWG. NO.	DATE	SCALE
5950-8		DEC. 1951	1" = 10'

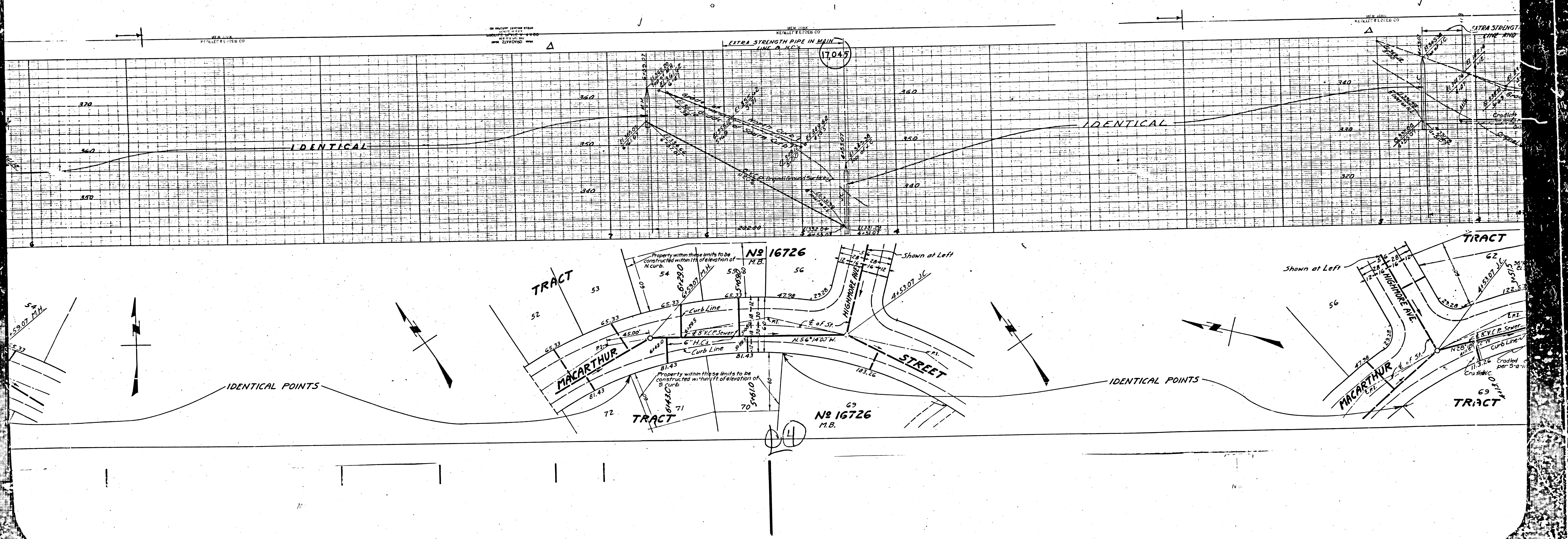
TRACED BY Stuart  
 DESG'D BY E.S.  
 CK'D BY E.S.  
 SUBMITTED:

RECEIVED

FOR LEGEND SEE PLAN NO. S-64  
 FOR CONSTRUCTION NOTES SEE SHEET 1  
 COUNTY OF LOS ANGELES, CALIFORNIA  
 WILLIAM J. JOY COUNTY ENGINEER  
 APPROVED: [Signature] CHIEF DEPUTY  
 APPROVED BY: [Signature] OFFICE ENGINEER  
 CHIEF ENGINEER OF COUNTY  
 SANITATION DISTRICT NO. 5  
 CHECKED: [Signature] 2-25-52  
 COUNTY OF COUNTY ENGINEER, 188 C.E. NO. 2

check 8.3.53 [Signature]

TRACT NO. 16726  
 16726  
 16726



NEW YORK PERALLET & COES CO. NEW YORK KENNEL & EDGEE CO. NEW YORK

EXTRA STRENGTH PIPE IN MAIN  
LINE & H.C.

(17,045)

IDENTICAL

IDENTICAL

IDENTICAL POINTS

IDENTICAL POINTS

No 16726  
M.B.

No 16726  
M.B.

TRACT

TRACT

TRACT

TRACT

TRACT

TRACT

TRACT

52

53

54

56

72

71

70

56

59

62

69

MACARTHUR

STREET

MACARTHUR

STREET

Property within these limits to be constructed within 1 ft. of elevation of N curb.

Property within these limits to be constructed within 1 ft. of elevation of S curb.

Property within these limits to be constructed within 1 ft. of elevation of N curb.

Property within these limits to be constructed within 1 ft. of elevation of S curb.

Shown at Left

Shown at Left

65.33

65.33

65.33

65.33

81.43

81.43

81.43

47.98

47.98

47.98

47.98

65.33

65.33

65.33

65.33

81.43

81.43

81.43

47.98

47.98

47.98

47.98

65.33

65.33

65.33

65.33

81.43

81.43

81.43

47.98

47.98

47.98

47.98

65.33

65.33

65.33

65.33

81.43

81.43

81.43

47.98

47.98

47.98

47.98

65.33

65.33

65.33

65.33

81.43

81.43

81.43

47.98

47.98

47.98

47.98

65.33

65.33

65.33

65.33

81.43

81.43

81.43

47.98

47.98

47.98

47.98

65.33

65.33

65.33

65.33

81.43

81.43

81.43

47.98

47.98

47.98

47.98

65.33

65.33

65.33

65.33

81.43

81.43

81.43

47.98

47.98

47.98

47.98

65.33

65.33

65.33

65.33

81.43

81.43

81.43

47.98

47.98

47.98

47.98

65.33

65.33

65.33

65.33

81.43

81.43

81.43

47.98

47.98

47.98

47.98

65.33

65.33

65.33

65.33

81.43

81.43

81.43

47.98

47.98

47.98

47.98

65.33

65.33

65.33

65.33

81.43

81.43

81.43

47.98

47.98

47.98

47.98

65.33

65.33

65.33

65.33

81.43

81.43

81.43

47.98

47.98

47.98

47.98

65.33

65.33

65.33

65.33

81.43

81.43

81.43

47.98

47.98

47.98

47.98

65.33

65.33

65.33

65.33

81.43

81.43

81.43

47.98

47.98

47.98

47.98

65.33

65.33

65.33

65.33

81.43

81.43

81.43

47.98

47.98

47.98

47.98

65.33

65.33

65.33

65.33

81.43

81.43

81.43

47.98

47.98

47.98

47.98

65.33

65.33

65.33

65.33

81.43

81.43

81.43

47.98

47.98

47.98

47.98

65.33

65.33

65.33

65.33

81.43

81.43

81.43

47.98

47.98

47.98

47.98

65.33

65.33

65.33

65.33

81.43

81.43

81.43

47.98

47.98

47.98

47.98

65.33

65.33

65.33

65.33

81.43

81.43

81.43

47.98

47.98

47.98

47.98

65.33

65.33

65.33

65.33

81.43

81.43

81.43

47.98

47.98

47.98

47.98

65.33

65.33

65.33

65.33

81.43

81.43

81.43

47.98

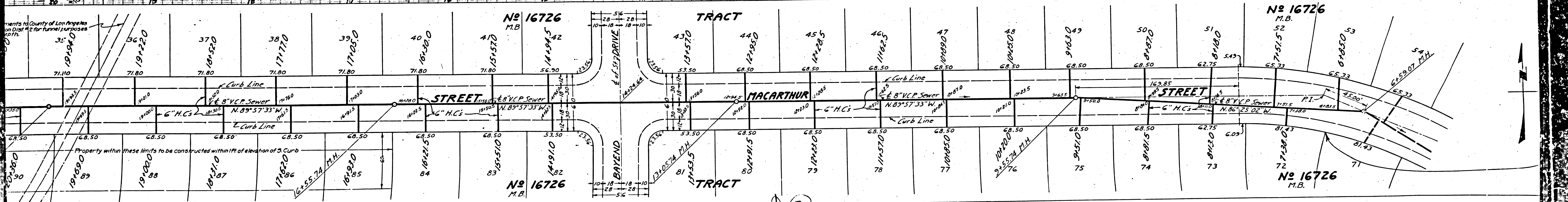
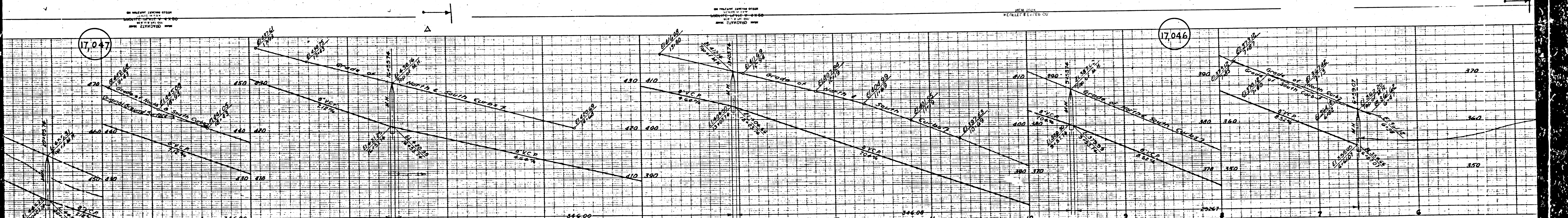
47.98

47.98

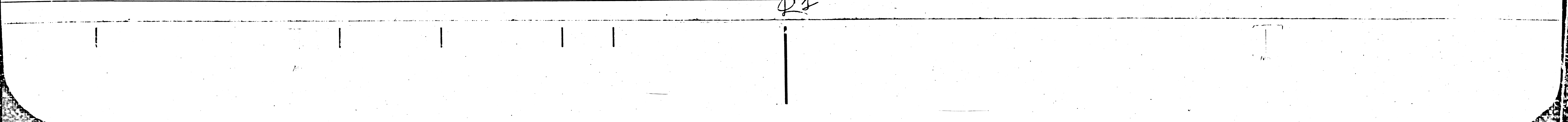
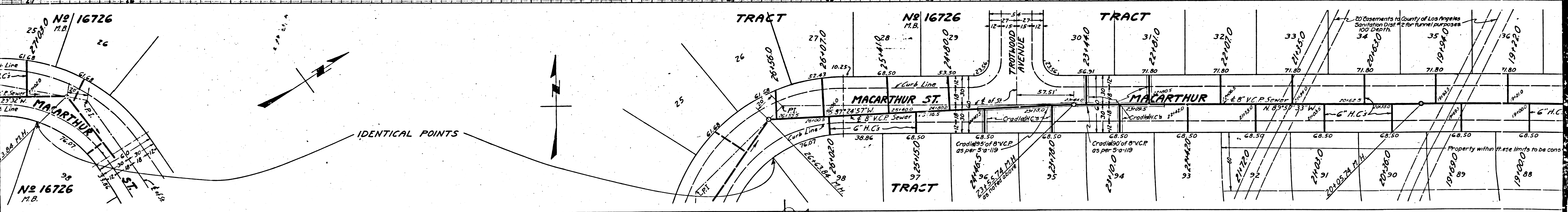
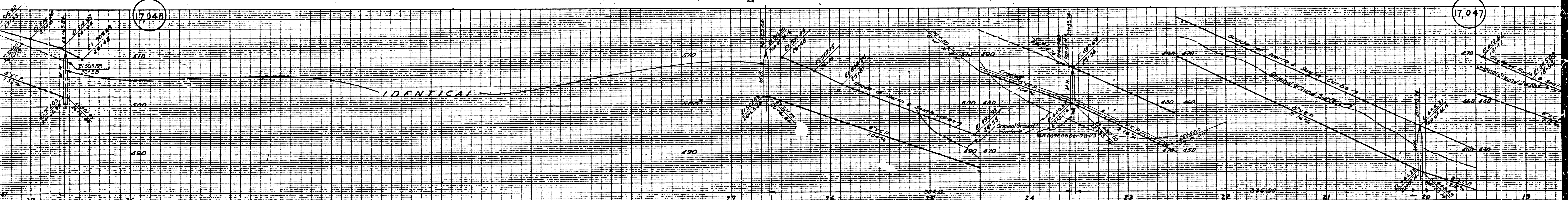
47.98

17,047

17,046



13

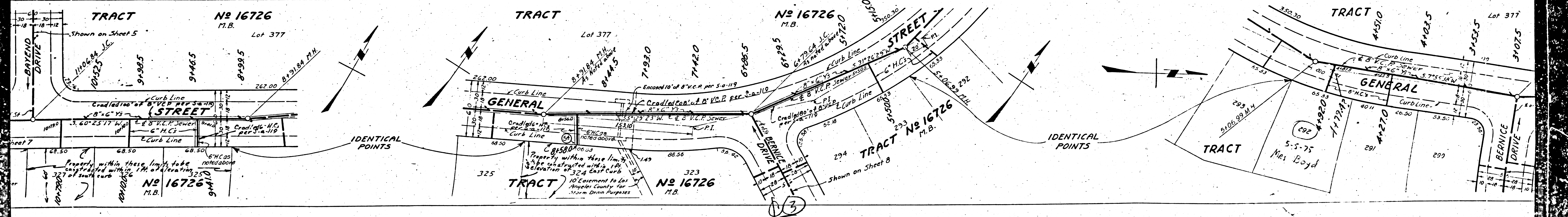
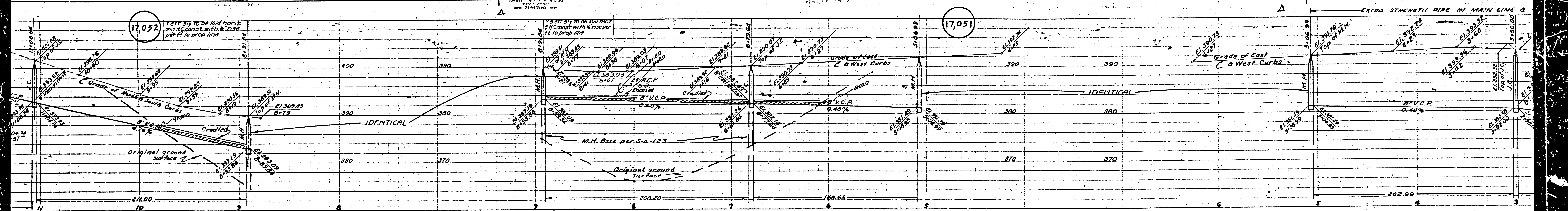






17,052

17,051

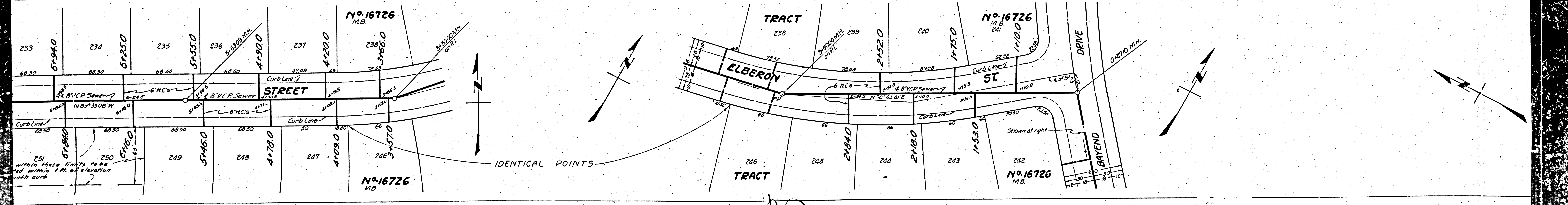
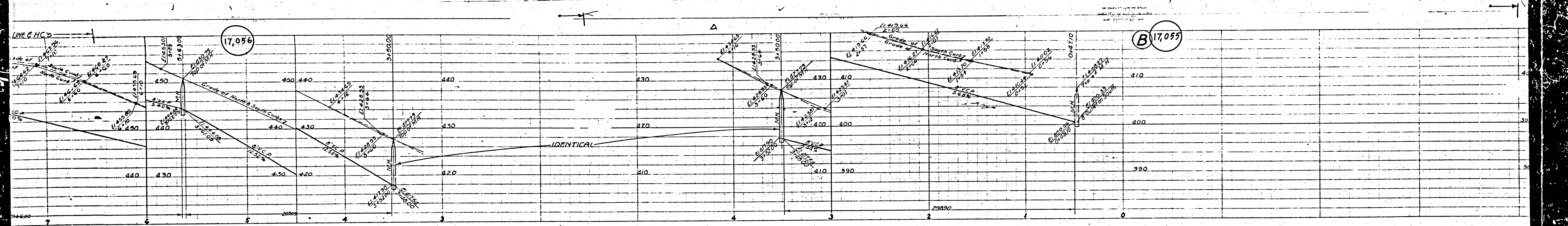








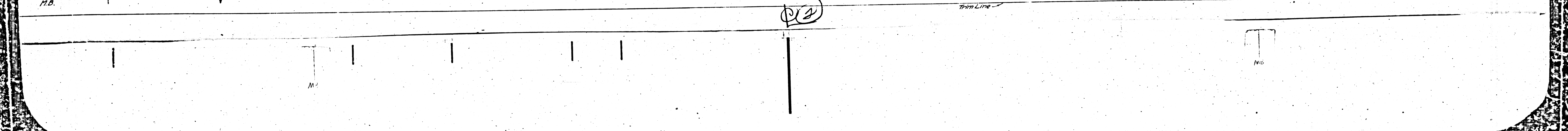
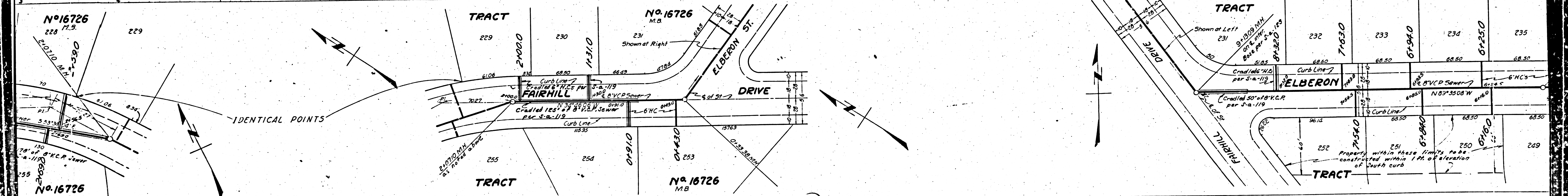
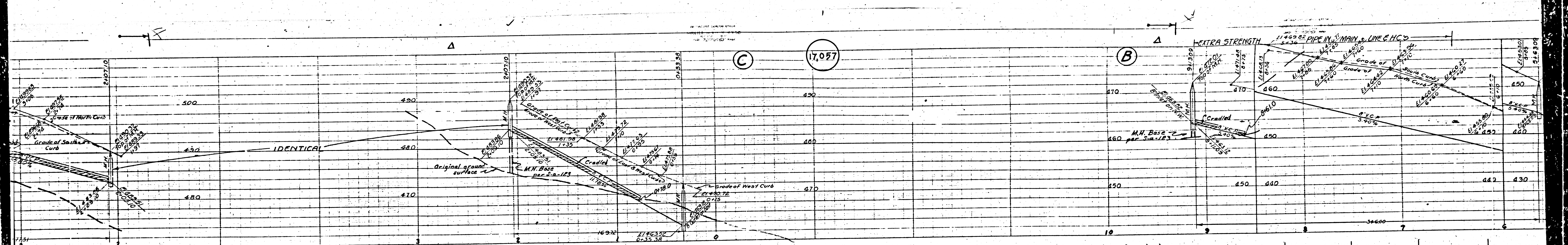




251 within these limits to be and within 1 ft. of elevation with curb

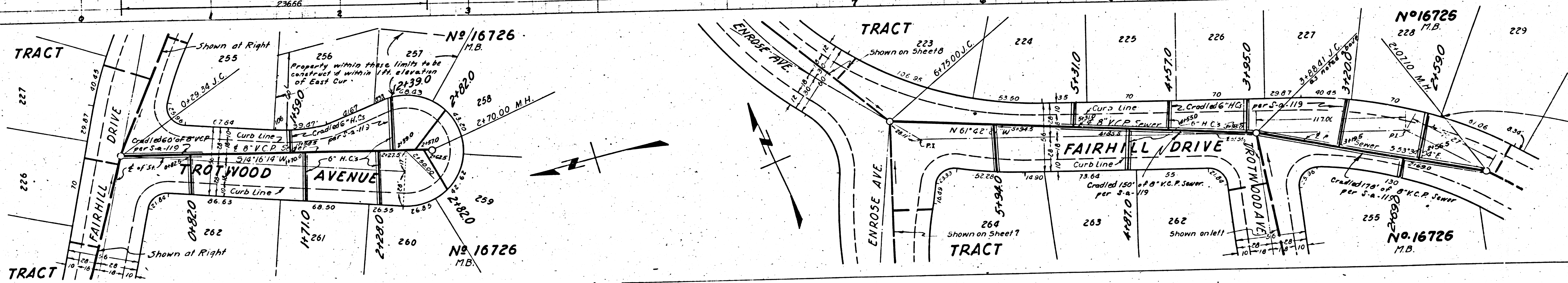
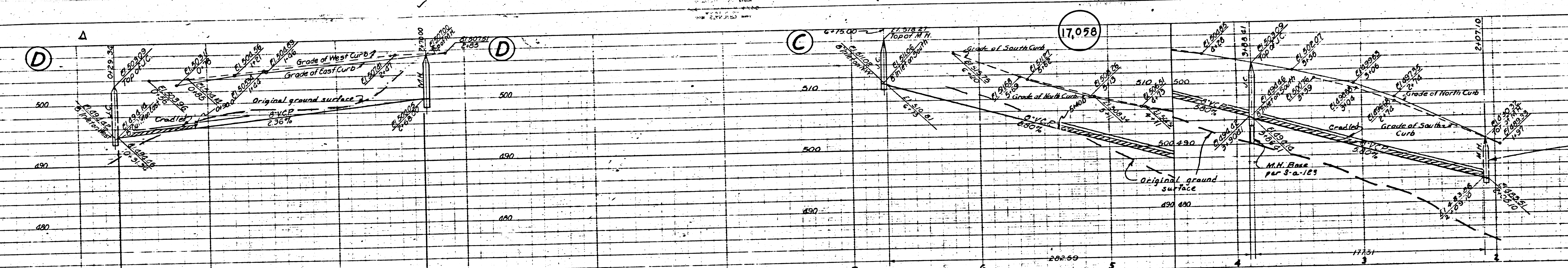
IDENTICAL POINTS

3



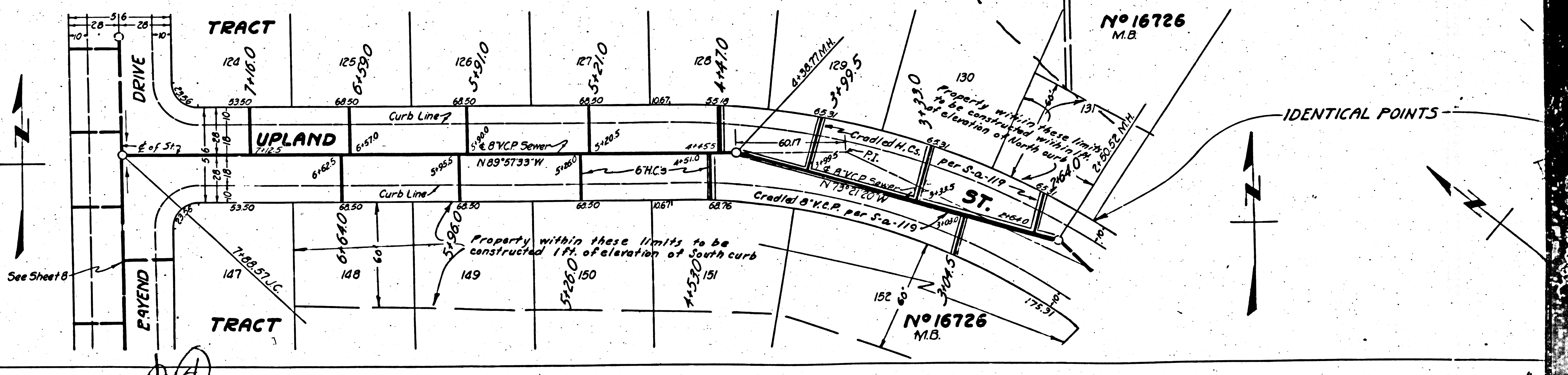
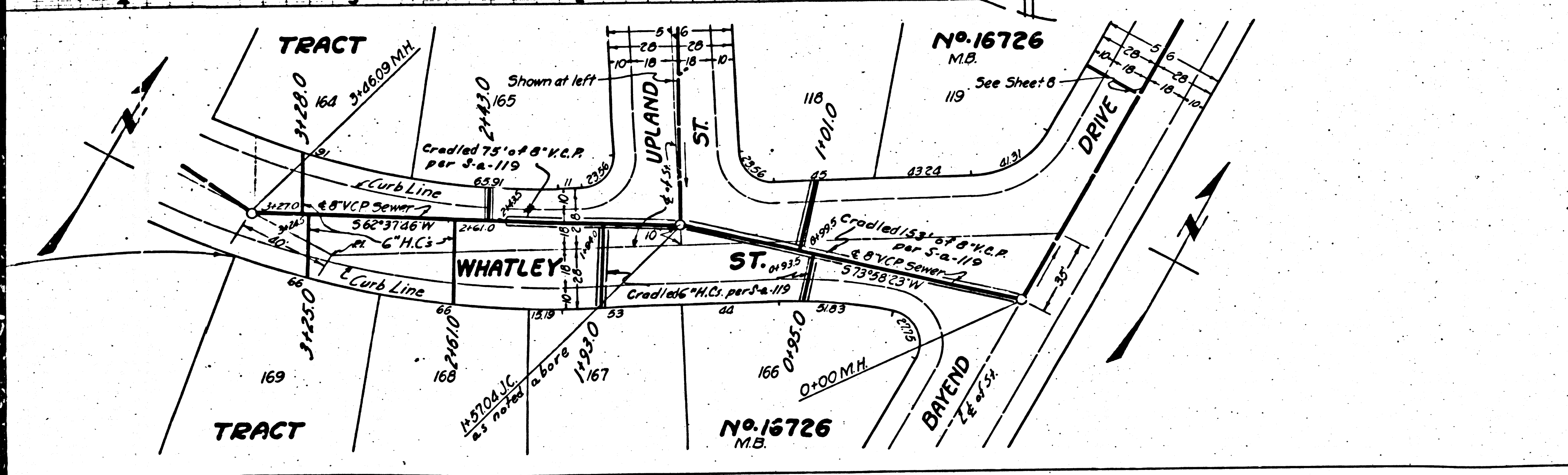
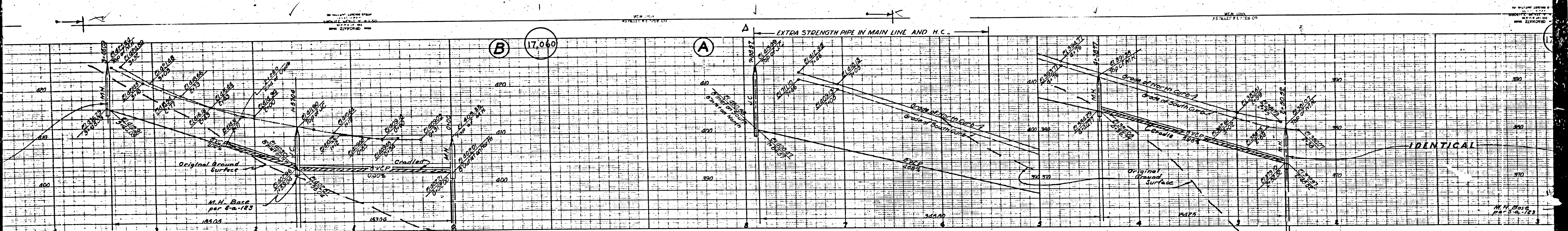
255 256 257 258 259 260 261 262 263 264 265 266 267 268 269 270 271 272 273 274 275 276 277 278 279 280 281 282 283 284 285 286 287 288 289 290 291 292 293 294 295 296 297 298 299 300 301 302 303 304 305 306 307 308 309 310 311 312 313 314 315 316 317 318 319 320 321 322 323 324 325 326 327 328 329 330 331 332 333 334 335 336 337 338 339 340 341 342 343 344 345 346 347 348 349 350 351 352 353 354 355 356 357 358 359 360 361 362 363 364 365 366 367 368 369 370 371 372 373 374 375 376 377 378 379 380 381 382 383 384 385 386 387 388 389 390 391 392 393 394 395 396 397 398 399 400 401 402 403 404 405 406 407 408 409 410 411 412 413 414 415 416 417 418 419 420 421 422 423 424 425 426 427 428 429 430 431 432 433 434 435 436 437 438 439 440 441 442 443 444 445 446 447 448 449 450 451 452 453 454 455 456 457 458 459 460 461 462 463 464 465 466 467 468 469 470 471 472 473 474 475 476 477 478 479 480 481 482 483 484 485 486 487 488 489 490 491 492 493 494 495 496 497 498 499 500

P.C. 2000



10



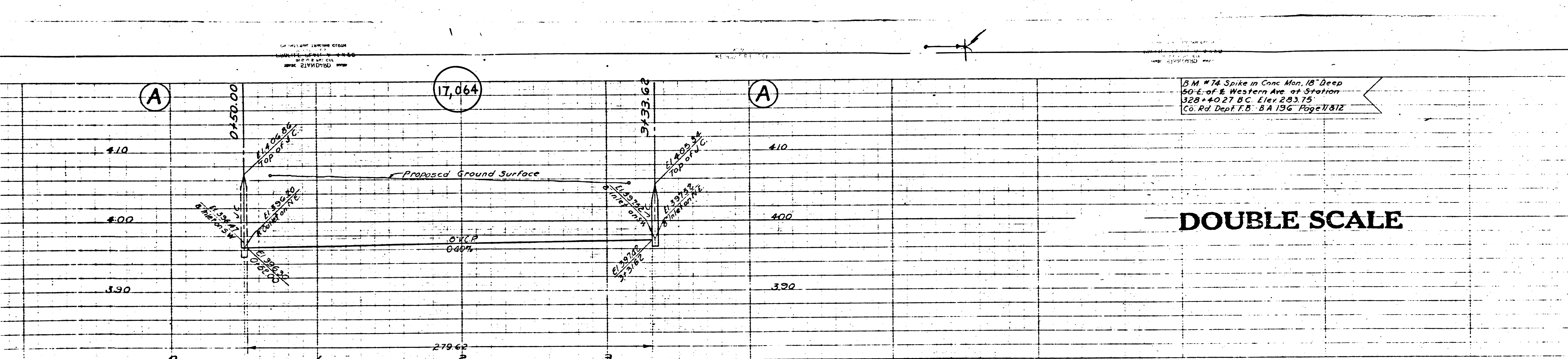








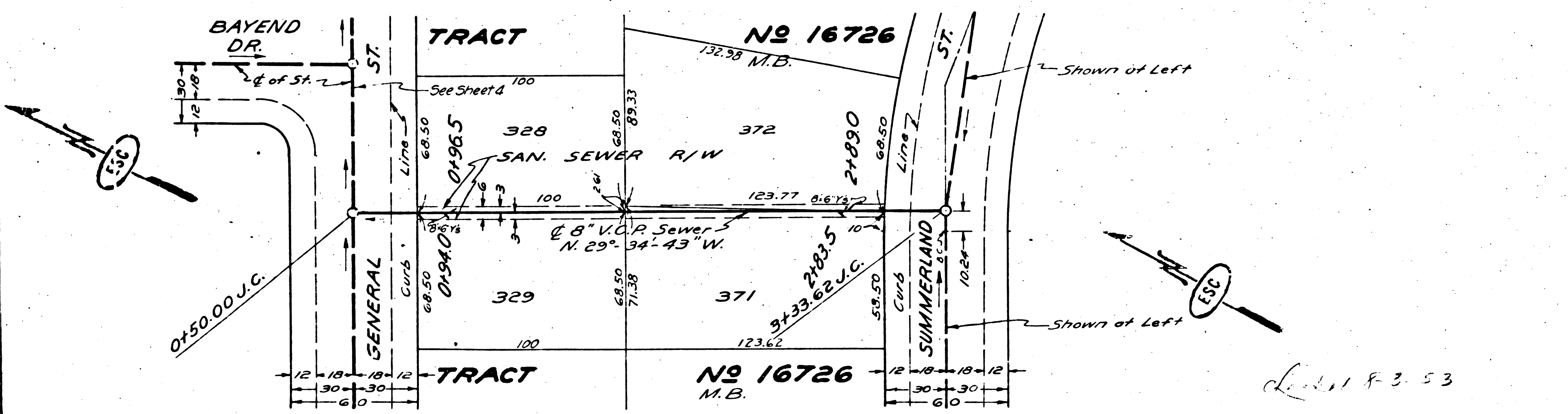




2" M # 74 Spike in Conc. Man. 18" Deep  
 50' E. of E. Western Ave. at Station  
 328+40.27 B.C. Elev. 283.75  
 Co. Rd. Dept. T.B. BA 196 Page 1812

**DOUBLE SCALE**

**PROFILE, ALIGNMENT AND GRADE OF  
 SANITARY SEWERS  
 TO BE CONSTRUCTED IN  
 EASEMENT  
 IN LOTS 328, 329, 371 & 372  
 SUMMERLAND ST.  
 BETWEEN ENROSE AVE. TO 100' EASTERLY OF EASEMENT  
 ENROSE AVE.  
 BETWEEN SUMMERLAND ST. & FAIRHILL DR.  
 IN TRACT NO 16726  
 PRIVATE CONTRACT NO. 2000  
 W.S. 28  
 SHEET 7 OF 8 SHEETS  
 SCALE - VERT. 1" = 8'  
 HORIZ. 1" = 40'  
 DEC. 1951  
 PREPARED IN THE OFFICES OF  
 ENGINEERING SERVICE CORPORATION**



ENGINEERING SERVICE CORPORATION			
1127 W WASHINGTON BLVD.			
LOS ANGELES 15 CALIF. PR. 7284			
REVISIONS		TRACED BY <i>S.M.S.</i>	
Mar. 3, 1953	Raised grades: Summerland St. (West End); Enrose Ave. (South End)	DES'G BY <i>S.M.S.</i>	
		CK'D BY <i>K.P.</i>	
		SUBMITTED:	
EUB STRUCTURES CK'D			
W.O. NO.	DWG. NO.	DATE	SCALE
5950-B		DEC 1951	1" = 40'

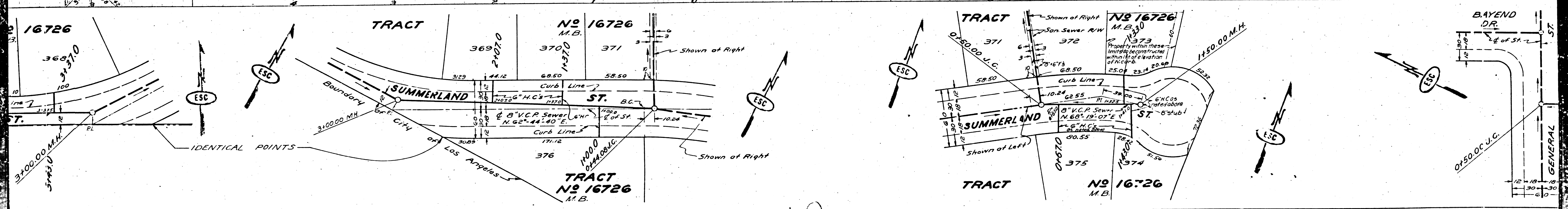
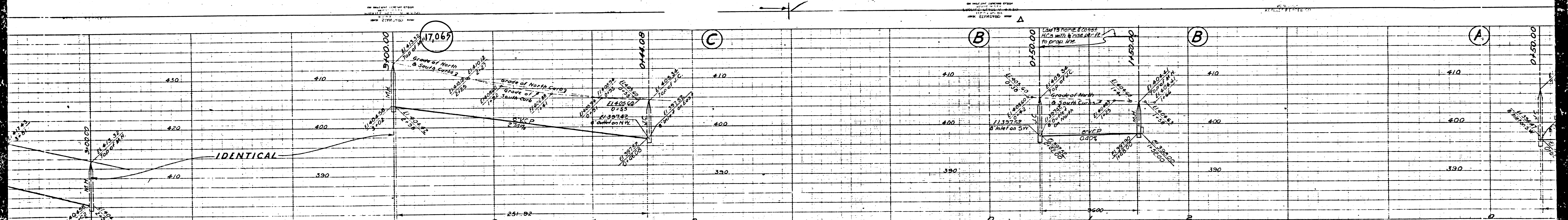
REVISION APPROVED: *W.S. 28* 3-5-53  
 Office of County Engineer  
 Ave. of Summerland Ave.

FOR L.S. 28  
 SEE PLAN NO. 5-44  
 FOR CONSTRUCTION NO. 28 SEE SHEET 1

**RECEIVED**  
 MAY 21 1953  
 L.A. COUNTY ENGINEER  
 SANITATION DIVISION

COUNTY OF LOS ANGELES  
 WILLIAM J. FOX COUNTY ENGINEER  
 APPROVED BY: *W.S. 28* CHIEF DEPUTY  
 APPROVED BY: *A.M. FAWN* OFFICE ENGINEER  
 CHIEF, SINGLE OF COUNTY  
 SANITATION DISTRICT NO. 5  
 CHECKED: *W.S. 28*  
 OFFICE OF COUNTY ENGINEER 115 C.E. NO. 1

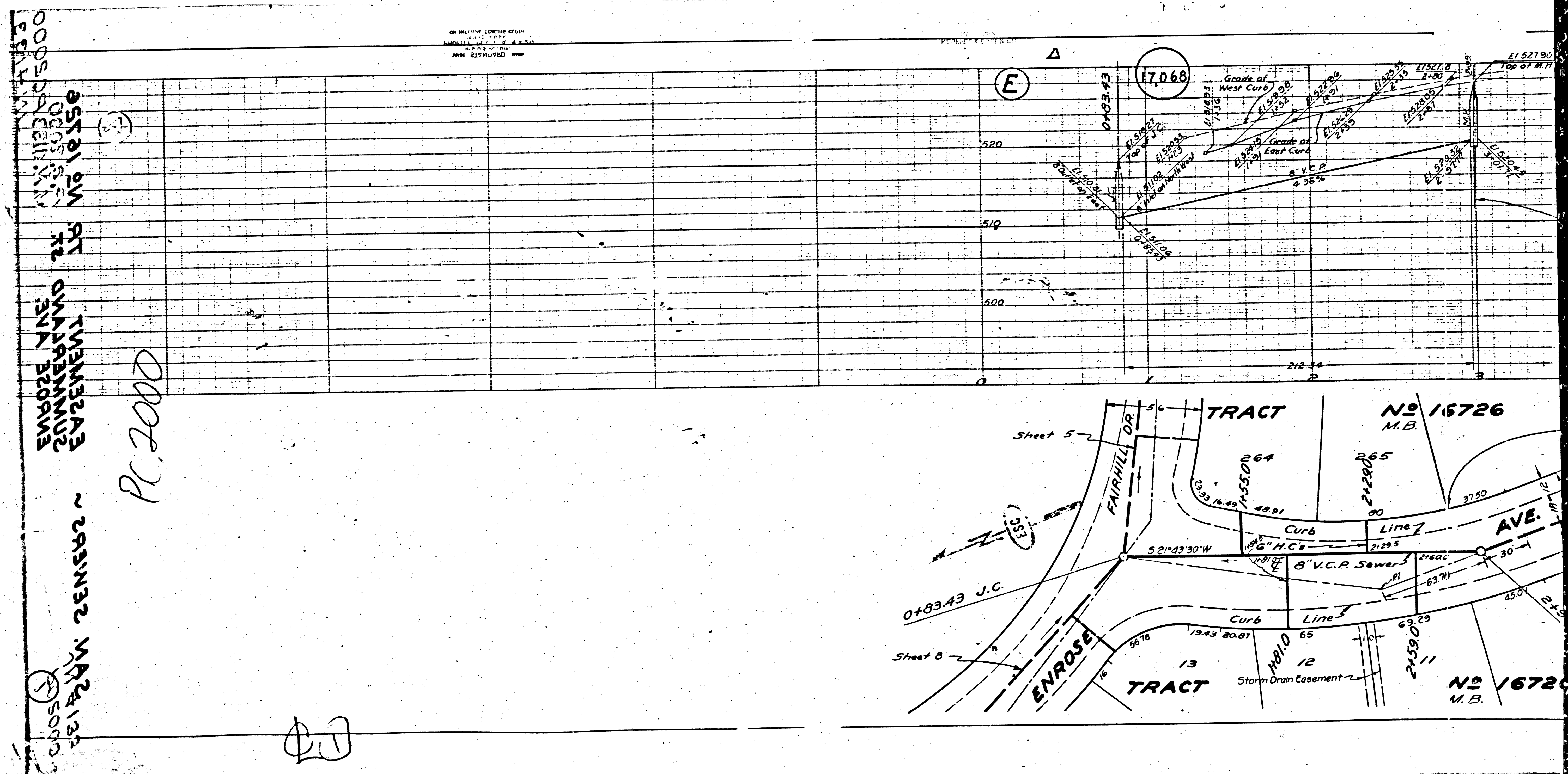
ENROSE AVE  
 EASEMENT  
 12' W. 16' E. 12' S.E.  
 5000  
 7



CA







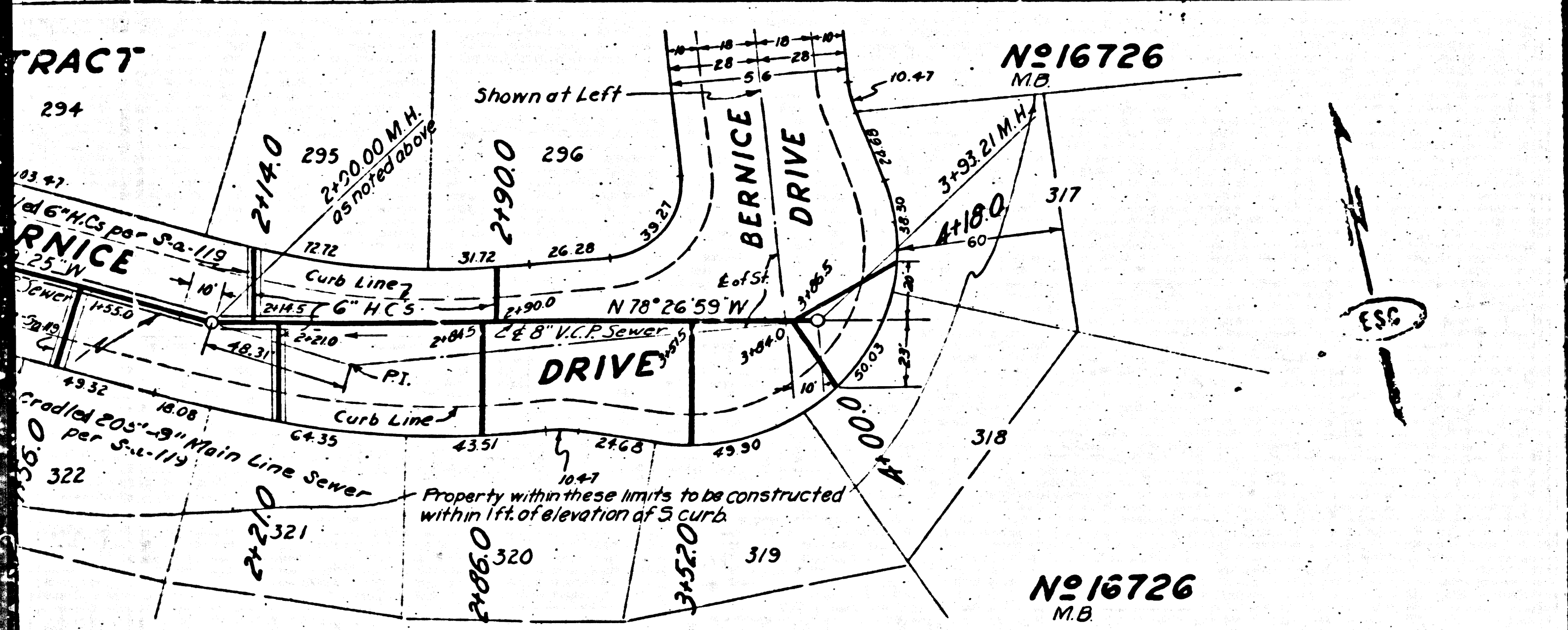
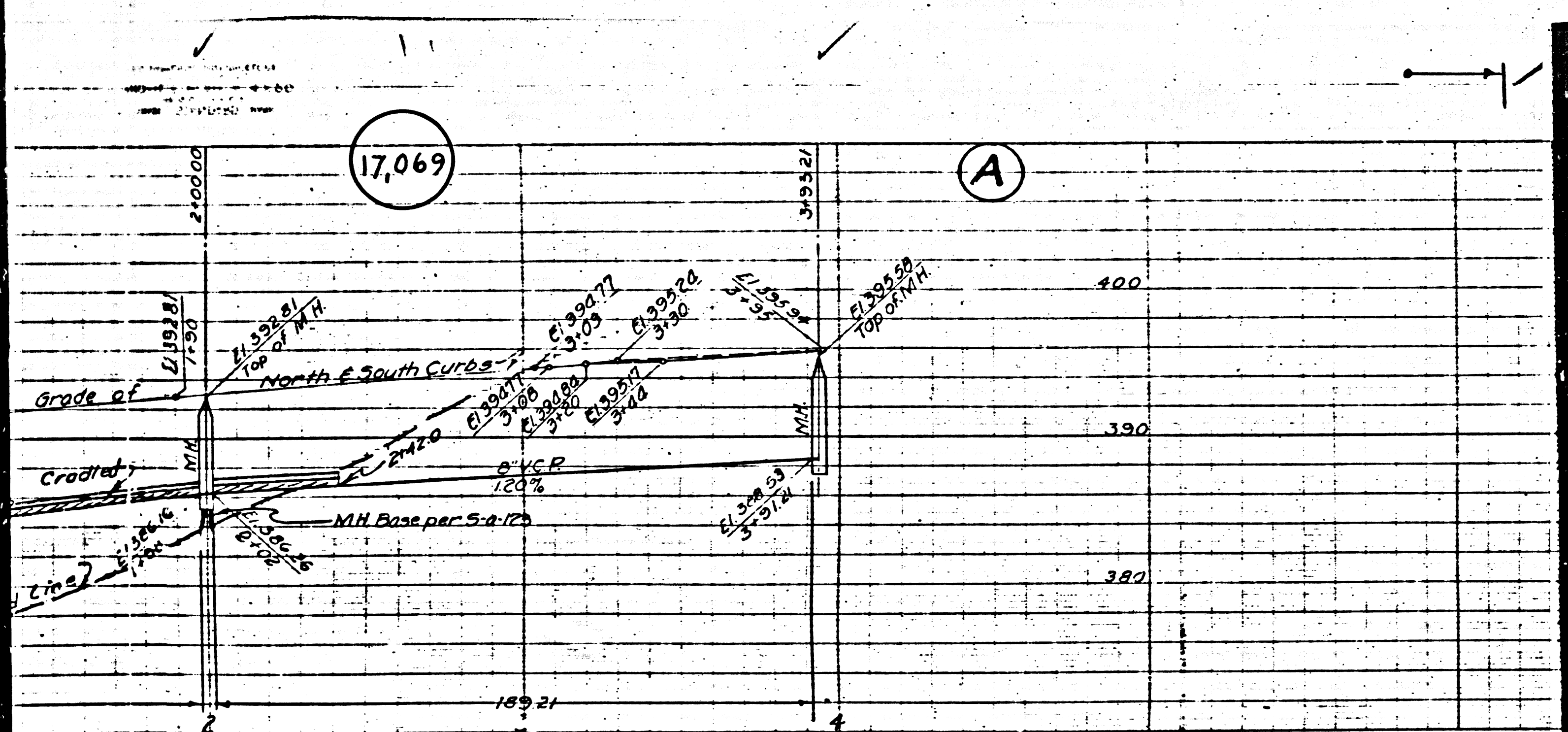
ENROSE AVE  
 SEWER LINE  
 EASEMENT  
 NO 16726

PC 2000

ENROSE AVE  
 SEWER LINE  
 EASEMENT  
 NO 16726

10

Mo



B.M. #74 Spike in Conc. Mon. 18" Deep  
50' E of E. Western Ave. at Station  
339+40.71 C.C. New 23.3 1/2"  
Co. Rd. Dept. P.B. - ON 106 PAPER 12

**DOUBLE SCALE**

PROFILE, ALIGNMENT AND GRADE OF **(B)**  
**SANITARY SEWERS**  
 TO BE CONSTRUCTED IN  
**BERNICE DRIVE**  
 EASTERLY OF GENERAL ST.  
**BAYEND DRIVE**  
 BETWEEN WHATLEY ST. AND TO NORTHERLY OF UPLAND ST.  
**ENROSE AVE.**  
 BETWEEN FAIRHILL DRIVE AND MAC ARTHUR ST.  
 IN TRACT N°16726

PRIVATE CONTRACT NO. 2000  
 W. S. 28  
 SHEET 8 OF 8 SHEETS  
 SCALE VERT. 1" = 4'  
 HOR. 1" = 40'  
 DEC 1951  
 PREPARED IN THE OFFICES OF  
**ENGINEERING SERVICE CORPORATION**

ENGINEERING SERVICE CORPORATION 1127 N. WASHINGTON, B.L.T. LOS ANGELES 15, CALIF. PR. 7361	
REVISION	TRACED BY C.W.K.
	DESIGN BY C.M.R.
	CHECKED BY E.S.
	SUBMITTED
SUP. STRUCTURES CHECKED	
5950-5	DEC 1951

HOW LEGEND  
 SEE PLAN NO. 50-64  
 FOR CONSTRUCTION NOTES SEE SHEET 1

RECEIVED  
 MAY 21 1953  
 L. A. COUNTY ENGINEER  
 SANITARY

WILLIAM J. FOX COUNTY ENGINEER  
 A. H. RAY CHIEF DEPUTY  
 OFFICE ENGINEER  
 CHIEF ENGINEER OF COUNTY  
 SANITATION DISTRICT NO. 5  
 2-15-52  
 COUNTY ENGINEER 1947 C. & NO. 6412

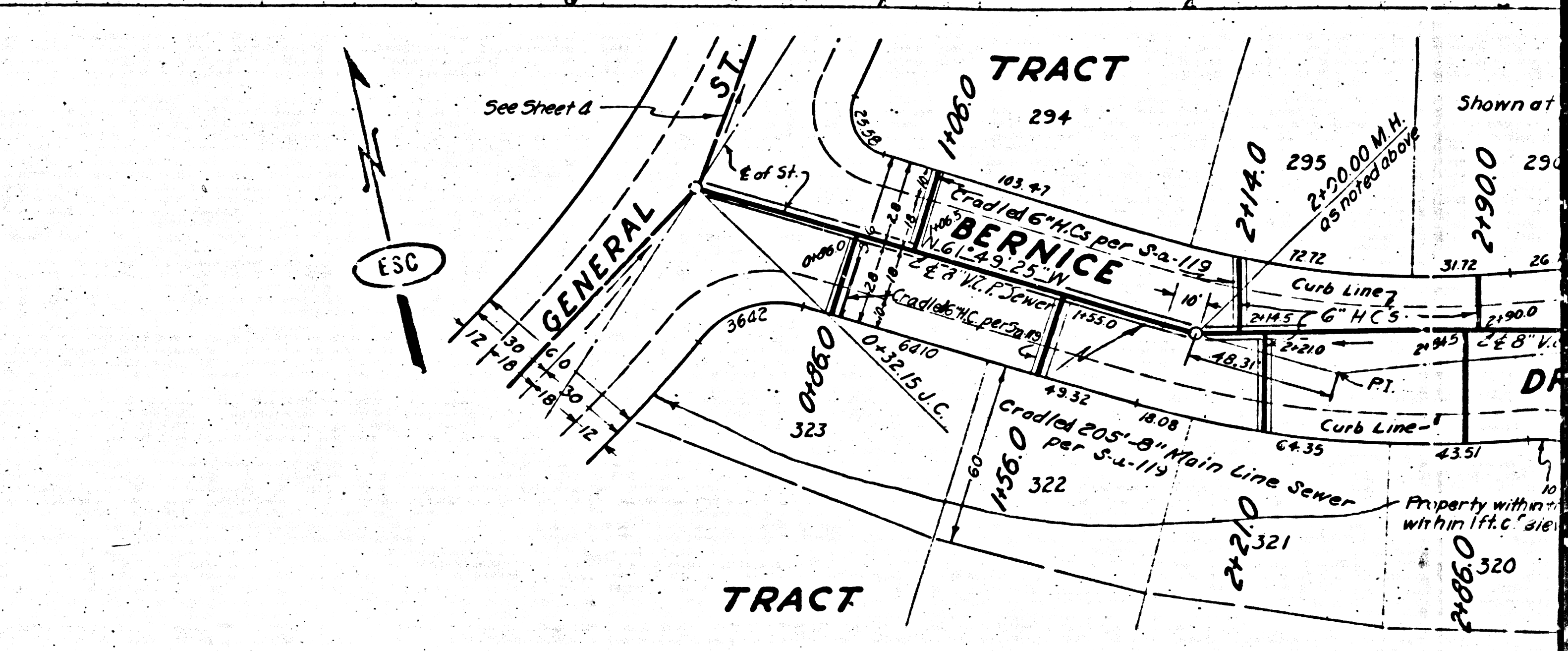
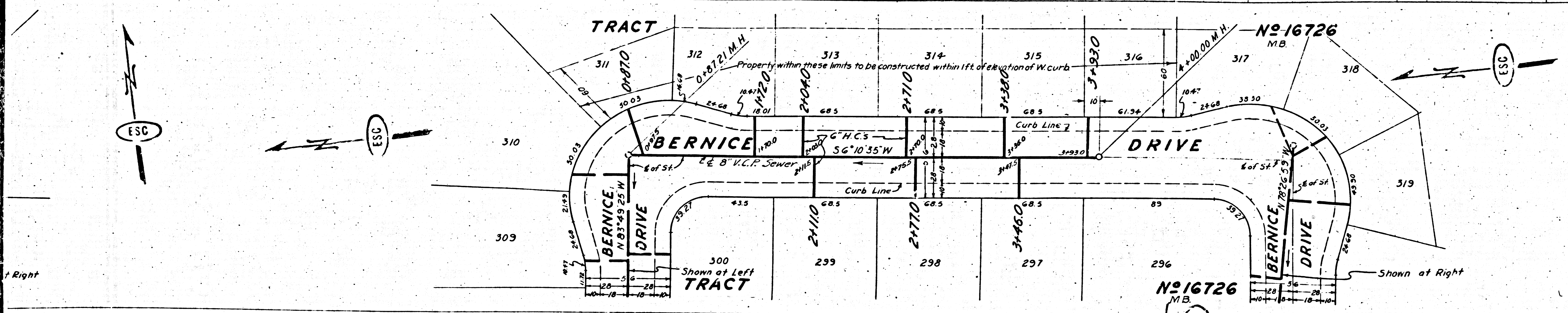
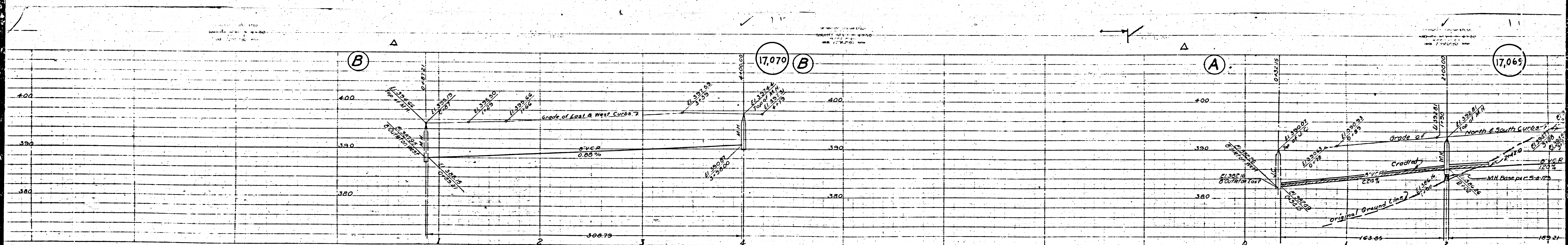
CHECKED AND  
 BAYEND DRIVE  
 BERNICE DRIVE  
 BC 5000  
 NY 4133  
 (B)

(B5)

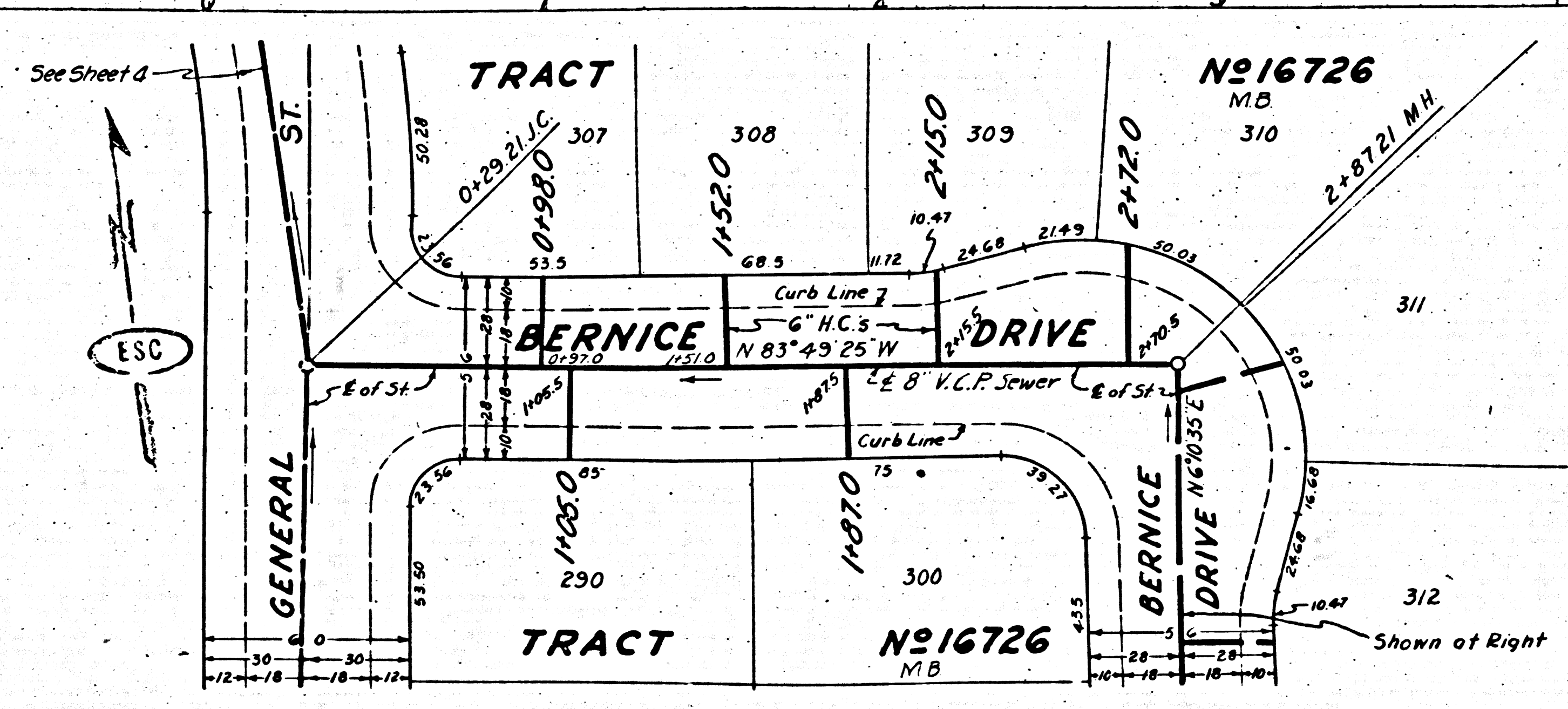
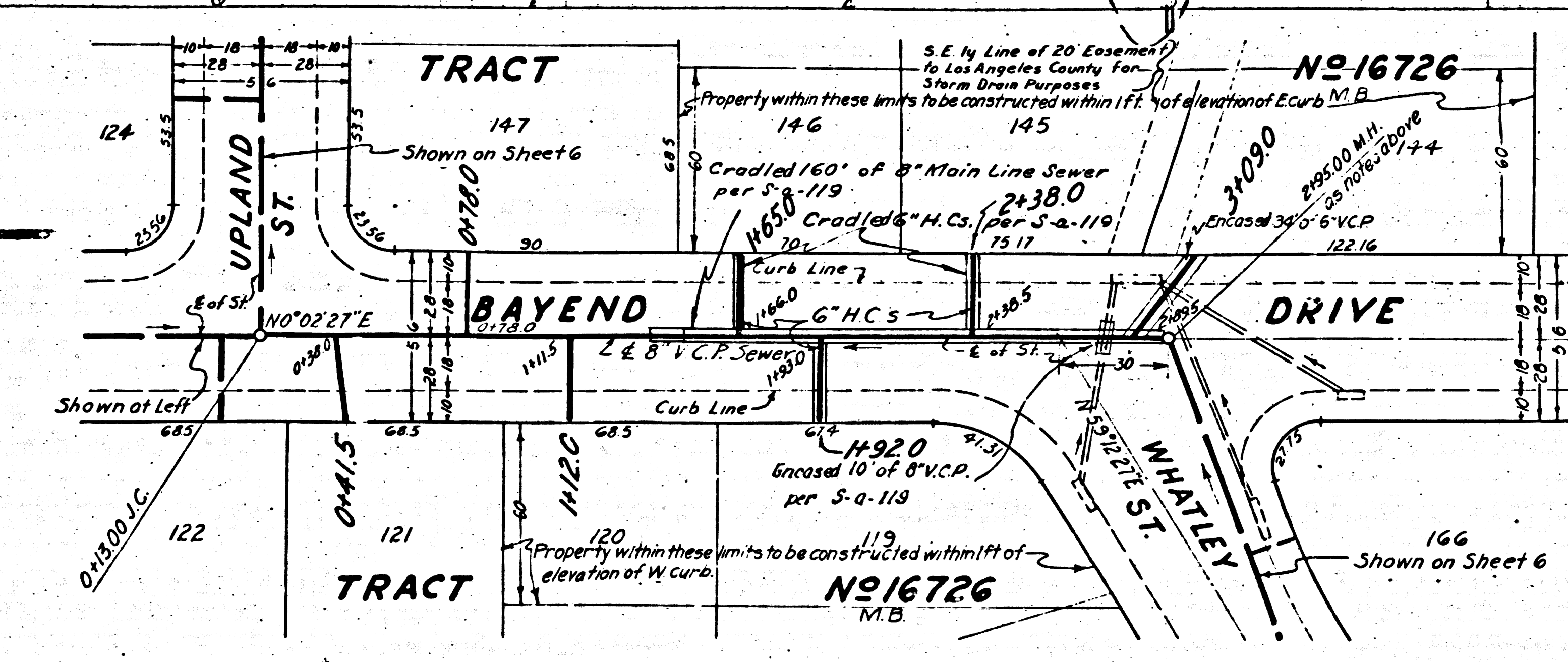
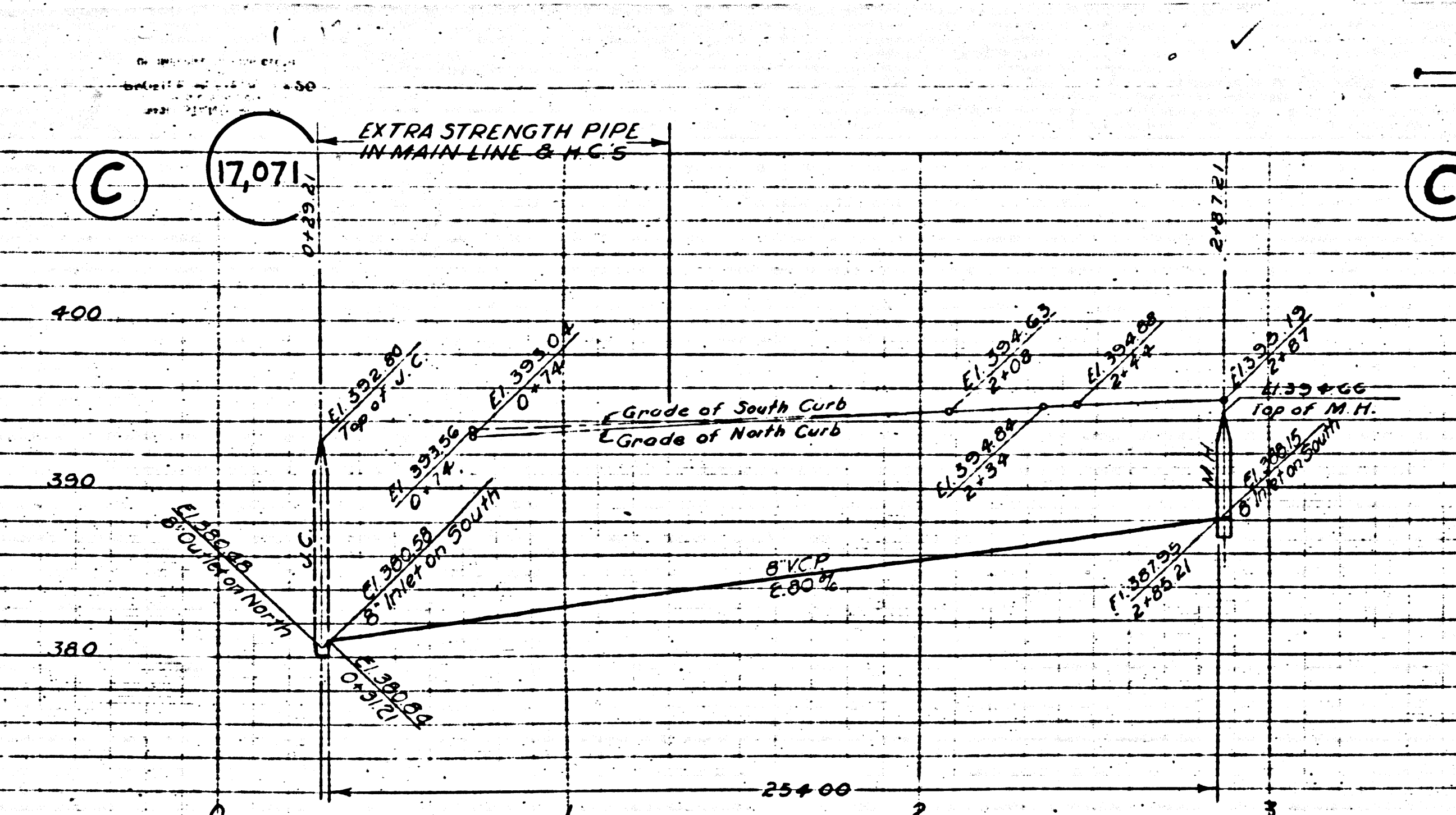
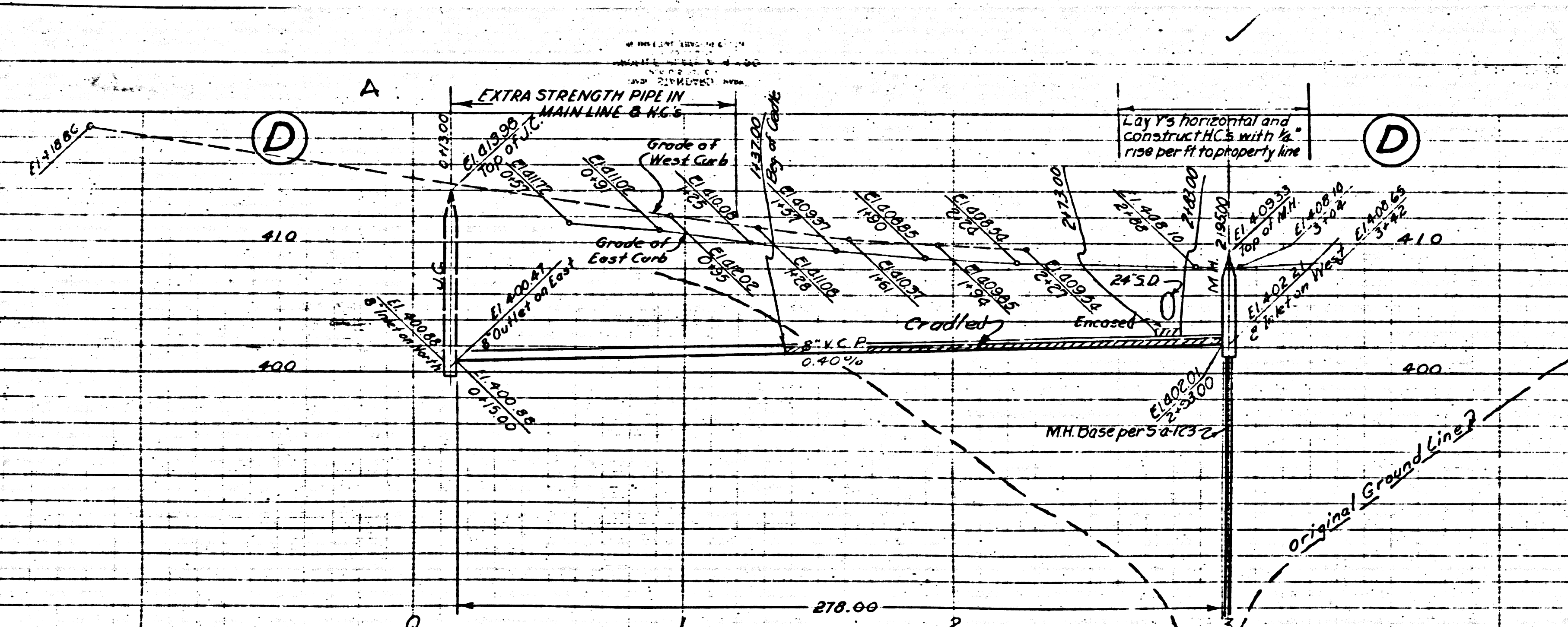
*Checked 8-3-53 McKinnon*

8722

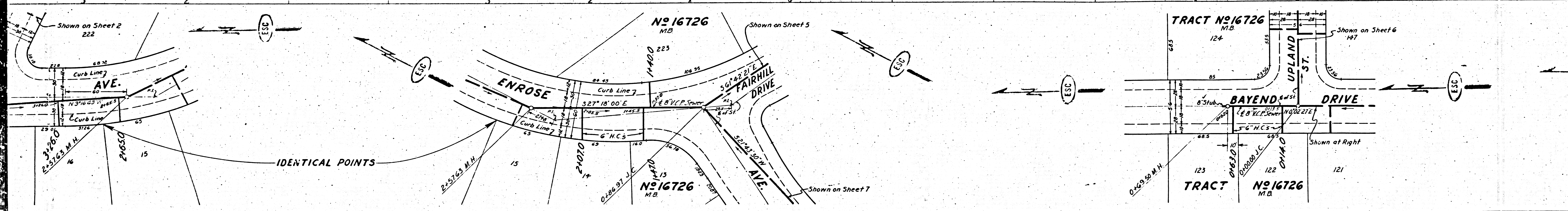
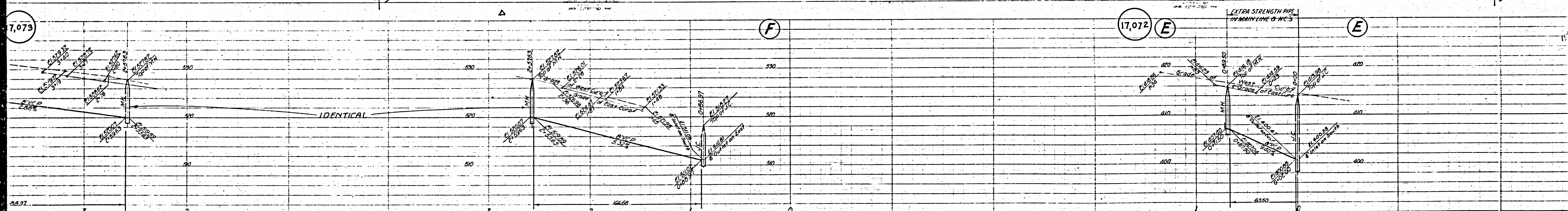




17



103



(2)

