

PROFILE ALIGNMENT AND GRADE OF SANITARY SEWERS TO BE CONSTRUCTED IN DUFFY STREET BETWEEN NOEL DRIVE 135' E OF NOEL DRIVE TRACT NO. 16116

PRIVATE CONTRACT No. 2009
 W.S. 48
SHEET 1 OF 1 SHEETS
 JAN 1952

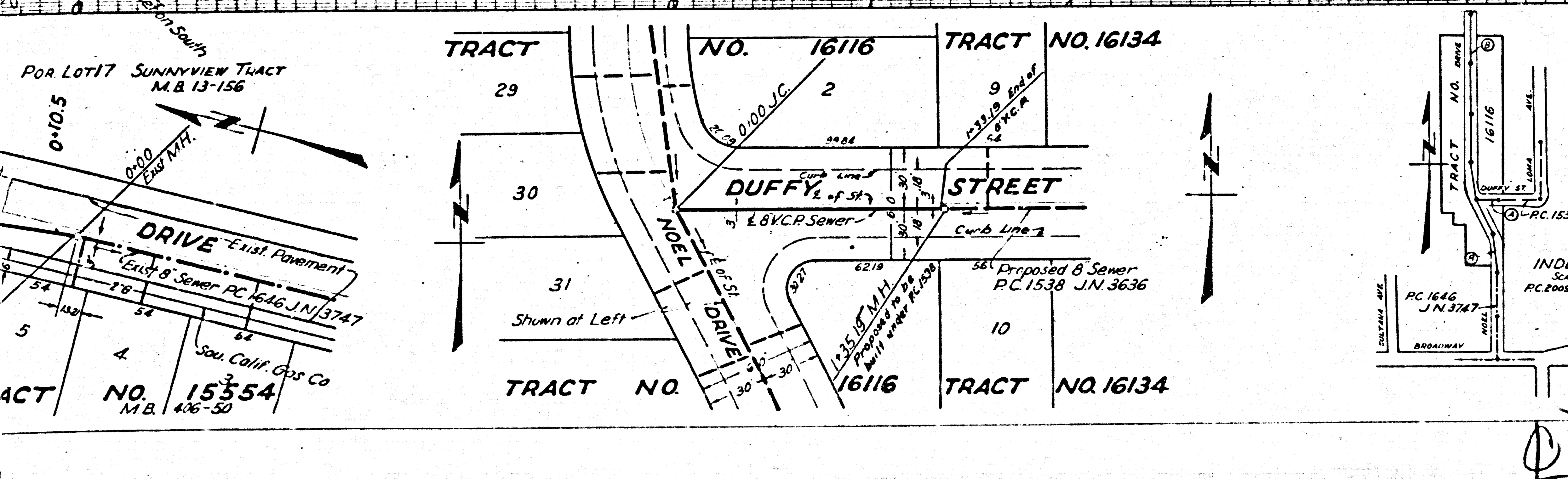
PREPARED IN THE OFFICES OF
KARL F. TUTTLE ENGINEERING CO., INC.

By *John E. Tuttle*
 Jan. 1952

FOR LEGEND

BEFORE BREAKING INTO ANY EXISTING STRUCTURE AND BEFORE FINAL ACCEPTANCE OF THIS WORK, COUNTY SANITATION DISTRICT SHOULD BE NOTIFIED IN ORDER THAT REQUIRED INSPECTION MAY BE MADE.

Hubert 5-13-52 W. L. L...



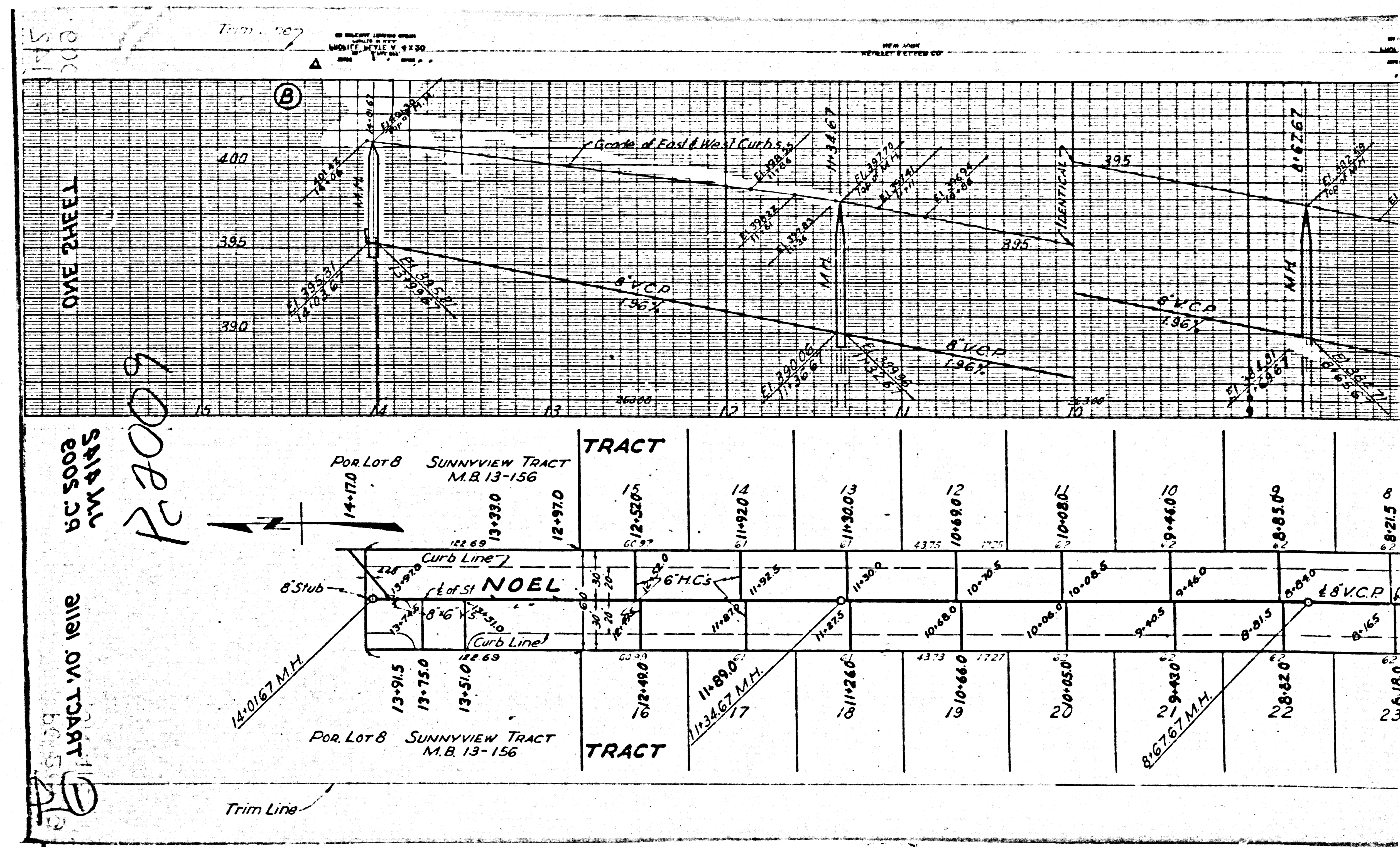
APPROVED BY: *John E. Tuttle*, County Engineer
 APPROVED BY: *Richard E. Hubert*, Sanitation District Engineer

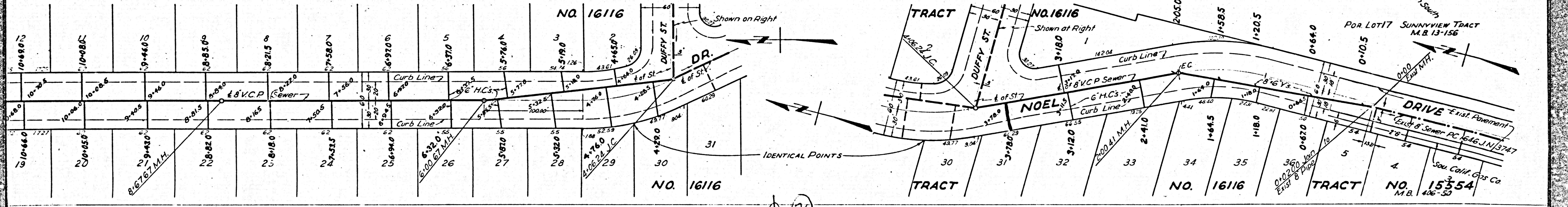
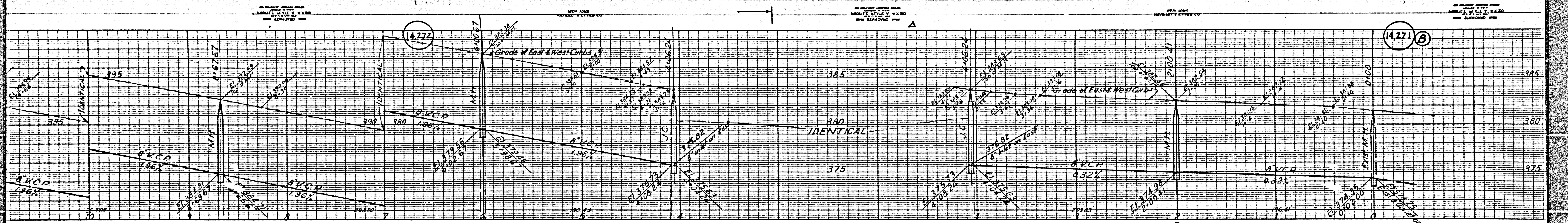
RECORDED
 FEB 4 1952

14271

14270

TRACT NO. 16116
 PRIVATE CONTRACT NO. 2009 SHEET 1 OF 1 SHEETS





②