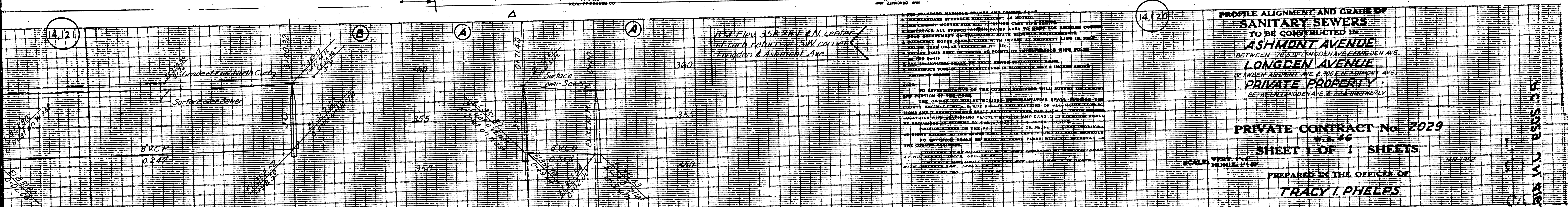


14.12 F

14.12 D

14.12 D



PER STANDARD HANDS, BRACKETS AND COVER SHALL BE USED UNLESS OTHERWISE SPECIFIED.

1. THE STANDARD SEWER PIPE SHALL BE 18 INCHES.

2. THE COUNTY ENGINEER SHALL BE NOTIFIED 14 DAYS BEFORE THE COMMENCEMENT OF CONSTRUCTION.

3. THE CONTRACTOR SHALL BE RESPONSIBLE FOR OBTAINING ALL NECESSARY PERMITS FROM THE COUNTY ENGINEER AND THE CITY ENGINEER.

4. THE CONTRACTOR SHALL BE RESPONSIBLE FOR OBTAINING ALL NECESSARY PERMITS FROM THE CITY ENGINEER AND THE COUNTY ENGINEER.

5. THE CONTRACTOR SHALL BE RESPONSIBLE FOR OBTAINING ALL NECESSARY PERMITS FROM THE CITY ENGINEER AND THE COUNTY ENGINEER.

6. THE CONTRACTOR SHALL BE RESPONSIBLE FOR OBTAINING ALL NECESSARY PERMITS FROM THE CITY ENGINEER AND THE COUNTY ENGINEER.

7. THE CONTRACTOR SHALL BE RESPONSIBLE FOR OBTAINING ALL NECESSARY PERMITS FROM THE CITY ENGINEER AND THE COUNTY ENGINEER.

8. THE CONTRACTOR SHALL BE RESPONSIBLE FOR OBTAINING ALL NECESSARY PERMITS FROM THE CITY ENGINEER AND THE COUNTY ENGINEER.

9. THE CONTRACTOR SHALL BE RESPONSIBLE FOR OBTAINING ALL NECESSARY PERMITS FROM THE CITY ENGINEER AND THE COUNTY ENGINEER.

10. THE CONTRACTOR SHALL BE RESPONSIBLE FOR OBTAINING ALL NECESSARY PERMITS FROM THE CITY ENGINEER AND THE COUNTY ENGINEER.

**PROFILE ALIGNMENT AND GRADE OF
SANITARY SEWERS
TO BE CONSTRUCTED IN
ASHMONT AVENUE
BETWEEN 70'S OF LONGDEN AVE & LONGDEN AVE
LONGDEN AVENUE
BETWEEN ASHMONT AVE & 70'S OF ASHMONT AVE
PRIVATE PROPERTY
BETWEEN LONGDEN AVE & 234 NORTHERLY**

**PRIVATE CONTRACT No. 2029
W.S. 46
SHEET 1 OF 1 SHEETS**

SCALE: HORIZ. 1" = 40'
VERT. 1" = 4'

PREPARED IN THE OFFICE OF
TRACY I. PHELPS

Tracy I. Phelps
R.E. 1581

FOR LEGEND

GRADES TO WHICH THE SEWER IS TO BE CONSTRUCTED ARE SHOWN ON PLANS AND PROFILES.

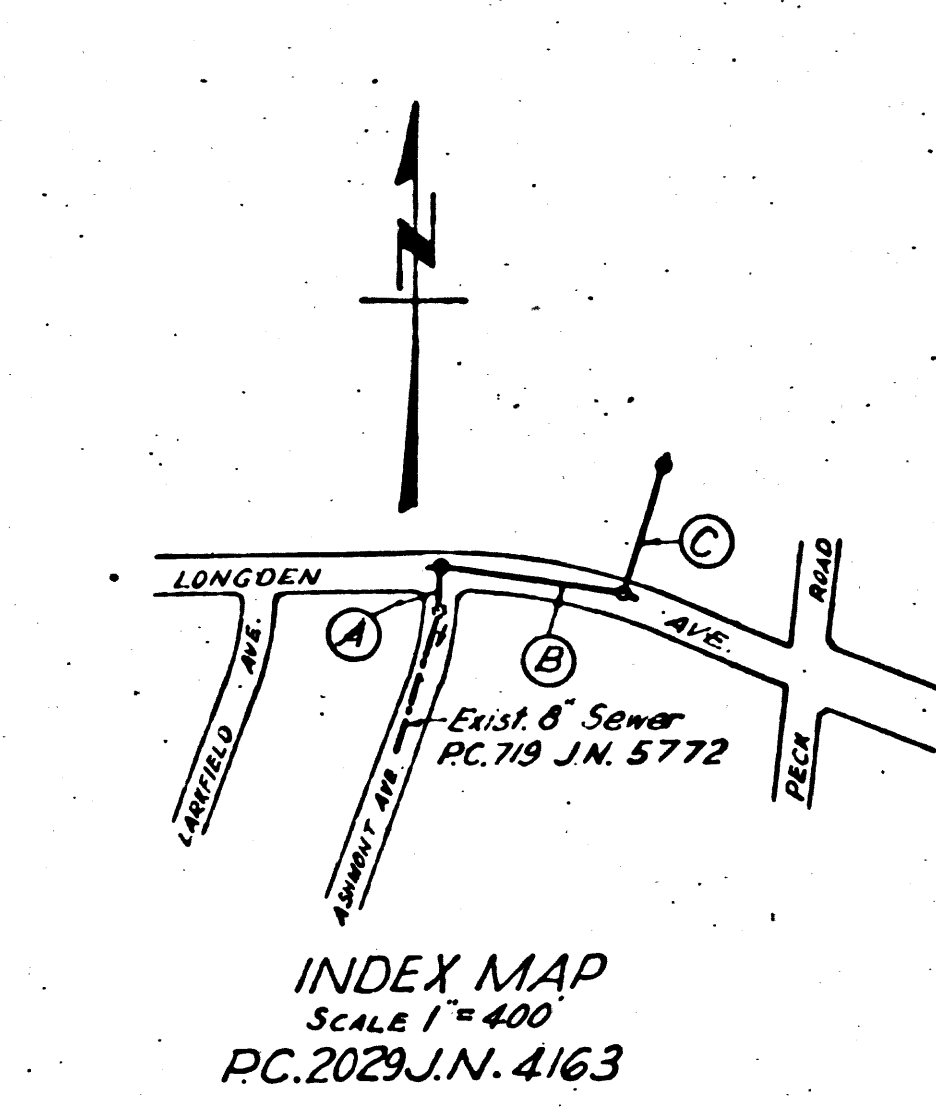
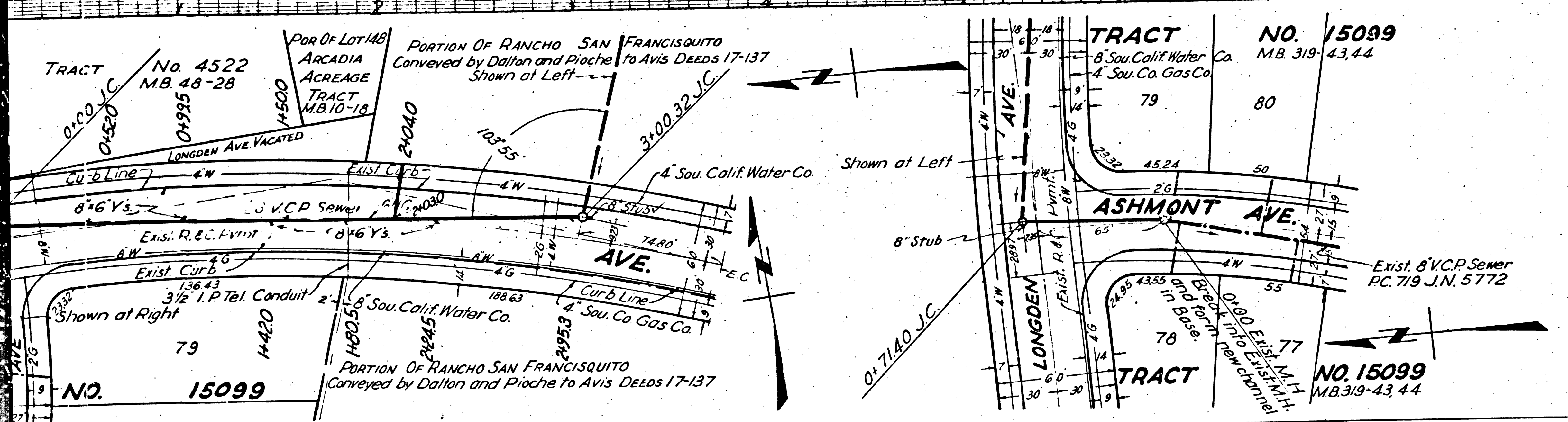
GRADE POINTS FOR 24" CURB CENTER LINE OF STREET OR CURB TOP OF ALLEY AT POINTS TO BE SET BY CONTRACTOR SHALL BE SHOWN ON THIS DRAWING AND SHALL BE CONFORM TO THE CITY ENGINEER'S ELEVATIONS ARE IN FEET ABOVE C.I.C. DATUM OR MEAN SEA LEVEL THIS DRAWING AND THE DATA HEREIN ARE HEREBY MADE A PART OF THE SPECIFICATIONS.

WORK SHALL BE CONSTRUCTED ACCORDING TO SPECIFICATIONS ON FILE IN THE OFFICE OF THE COUNTY ENGINEER.

THE CONTRACTOR SHALL BE RESPONSIBLE FOR OBTAINING ALL NECESSARY PERMITS FROM THE COUNTY ENGINEER AND THE CITY ENGINEER.

APPROVAL OF THIS PLAN BY THE COUNTY ENGINEER SHALL BE NECESSARY AFTER MAKING THE DEPOSIT WITH THE COUNTY ENGINEER.

COUNTY OF LOS ANGELES, CALIFORNIA
William J. Fox, County Engineer
APPROVED BY: *A. J. Phelps*, City Deputy
APPROVED BY: *Tracy I. Phelps*, Office Engineer
CHECKED BY: *Tracy I. Phelps*, Office Engineer
DATE: FEB 6 1952



INDEX MAP
SCALE 1" = 400'
P.C. 2029 J.N. 4163

FOR LEGEND

GRADES TO WHICH THE SEWER IS TO BE CONSTRUCTED ARE SHOWN ON PLANS AND PROFILES.

GRADE POINTS FOR 24" CURB CENTER LINE OF STREET OR CURB TOP OF ALLEY AT POINTS TO BE SET BY CONTRACTOR SHALL BE SHOWN ON THIS DRAWING AND SHALL BE CONFORM TO THE CITY ENGINEER'S ELEVATIONS ARE IN FEET ABOVE C.I.C. DATUM OR MEAN SEA LEVEL THIS DRAWING AND THE DATA HEREIN ARE HEREBY MADE A PART OF THE SPECIFICATIONS.

WORK SHALL BE CONSTRUCTED ACCORDING TO SPECIFICATIONS ON FILE IN THE OFFICE OF THE COUNTY ENGINEER.

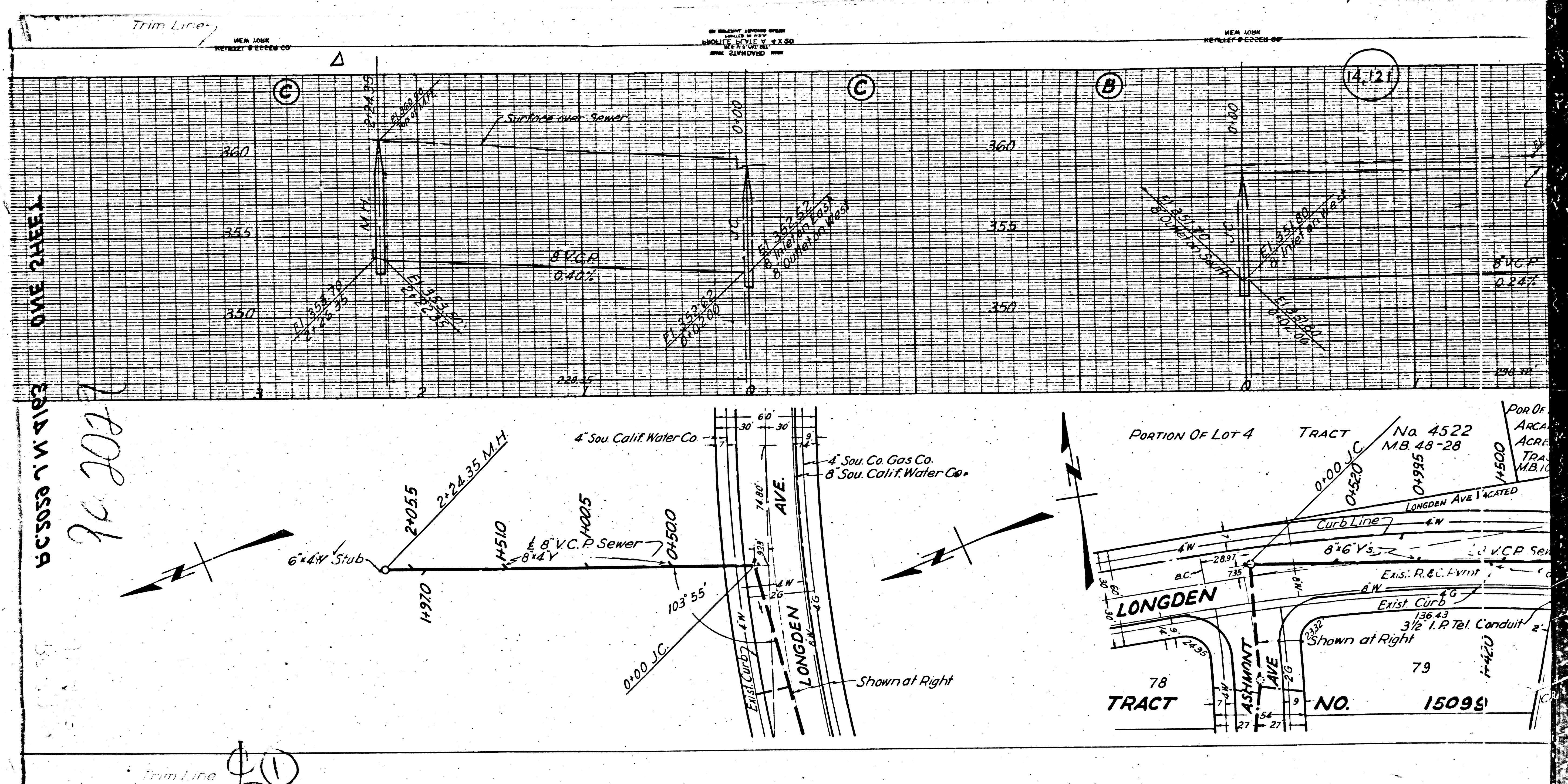
THE CONTRACTOR SHALL BE RESPONSIBLE FOR OBTAINING ALL NECESSARY PERMITS FROM THE COUNTY ENGINEER AND THE CITY ENGINEER.

APPROVAL OF THIS PLAN BY THE COUNTY ENGINEER SHALL BE NECESSARY AFTER MAKING THE DEPOSIT WITH THE COUNTY ENGINEER.

COUNTY OF LOS ANGELES, CALIFORNIA
William J. Fox, County Engineer
APPROVED BY: *A. J. Phelps*, City Deputy
APPROVED BY: *Tracy I. Phelps*, Office Engineer
CHECKED BY: *Tracy I. Phelps*, Office Engineer
DATE: FEB 6 1952

PC 2029 J.N. 4163 ONE SHEET

3-4-52



ONE SHEET

E.A.B. M. J. 05553A

FOR 76

Trim Line ⑩

14.121

WER JOHN REVELLE & CO. INC. ENGINEERS

