

BELFLOWER

1. Use Standard Moshale Frames and Covers, S.C. 117 except as noted.

2. Use Standard Strength Pipe.

3. Use Cement Mortar for all V.C.P. joints.

4. Resurface all trench within paved area to meet L.A. County Road Dept. requirements.

5. Excavate at points of interference with poles or wires.

6. House Connections to be constructed with 1/4 inch rise per foot to Property Line.

7. All Structures shall be Brick Sewer Structures S-C-104 except as noted.

8. Stoppers to be installed with joint compound by manufacturer at his plant, Spec. Sec. 33.48.

9. Concrete Pavement to be cut not less than 2" in depth with Concrete Saw. Spec. Sec. 45.

10. Provide markers on the Property Line at the Property Line produced at right angles to the Sewer Line, at the C of each manhole.

No representative of the County Engineer will accept or lay out any portion of the work. The survey of this particular representative shall through the County Engineer with Grade Books and Stationing for all House Connections and all Structures related thereto, placed at their proper locations with stationing plainly marked. Any changes of location shall be requested in writing by the owner to the representative. No revision shall be made to these Plans without approval of the County Engineer.

**PROFILE ALIGNMENT AND GRADE OF
SANITARY SEWERS
TO BE CONSTRUCTED IN
HORST AVE.
GRAYLAND AVE.
ELAINE AVE.
BETWEEN RENDOVA ST. & ARTERIA BLVD.**

**PRIVATE CONTRACT NO. 2036
N.S. 33
SHEET 1 OF 2 SHEETS**

Scale: Vert. 1" = 4'
Horiz. 1" = 40'

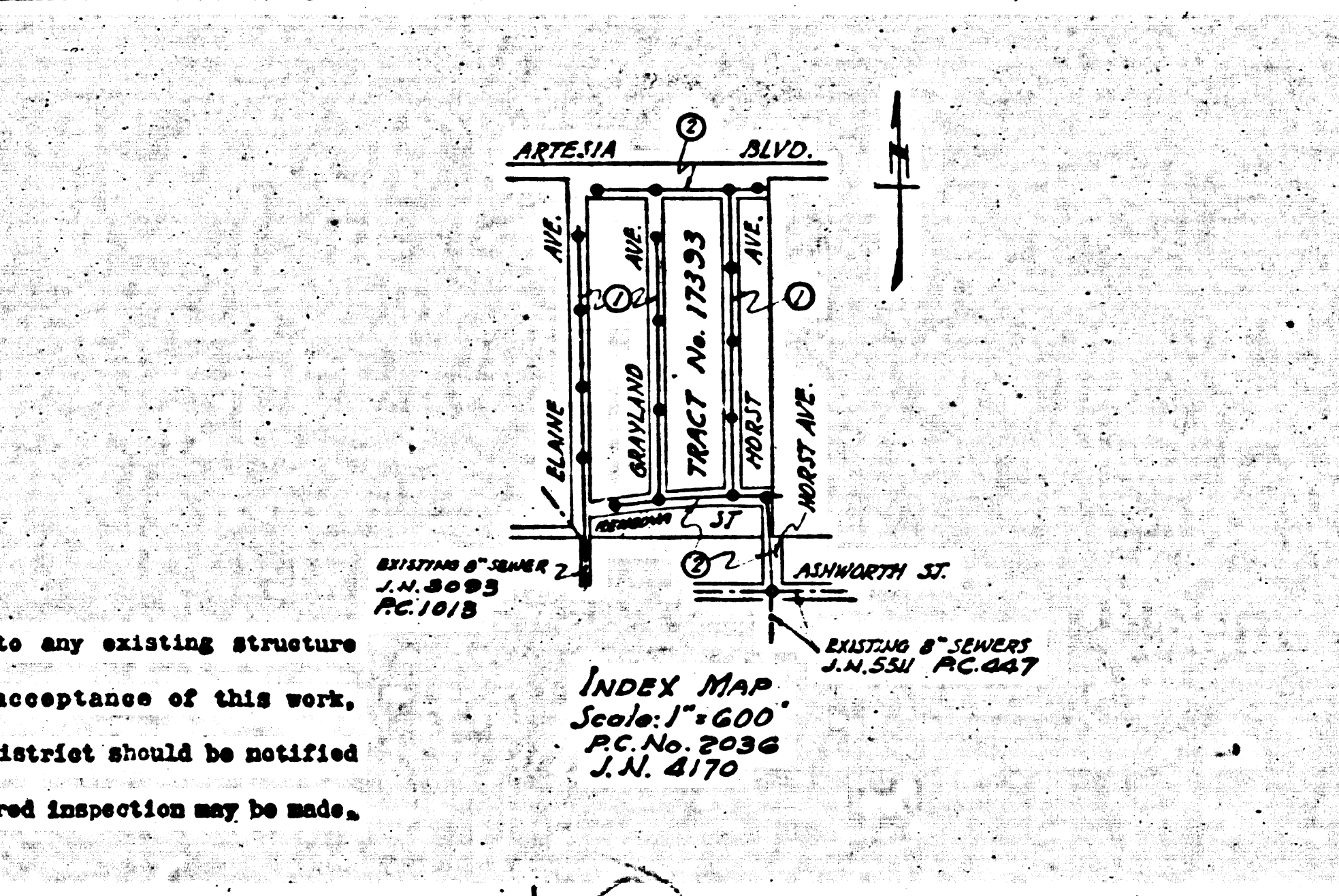
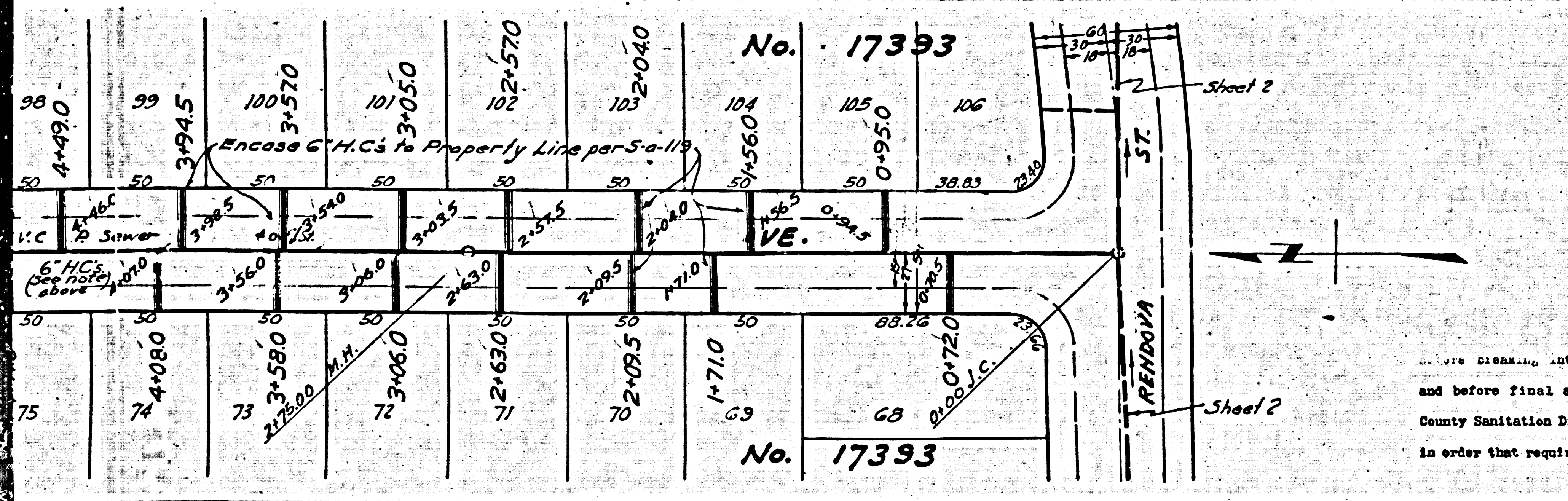
Dec. 1951

**PREPARED IN THE OFFICES OF
FRED C. STILSON**

By Fred C. Stilson
Reg. C.E. No. 1670

FOR LEGEND
See Plan No. S-a-64

FEB 18 1952
COUNTY ENGINEER



COUNTY OF LOS ANGELES, CALIFORNIA

WILLIAM J. FOX, COUNTY ENGINEER

APPROVED BY William J. Fox
CHIEF DEPUTY

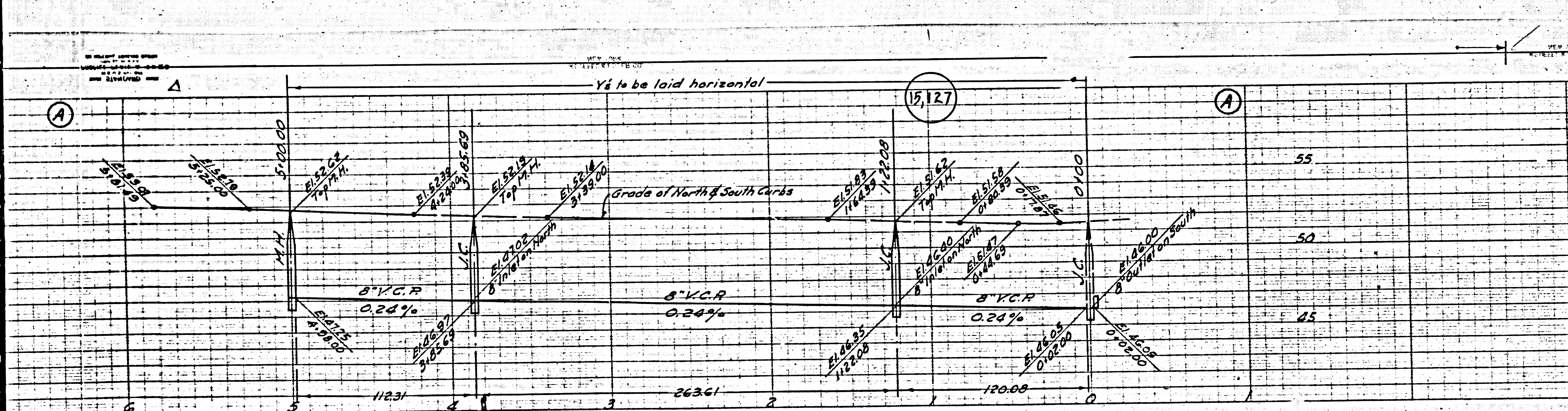
A. M. RAWN
CHIEF SANITARY DISTRICT ENGINEER

BY William J. Fox
CHIEF DEPUTY

CHECKED BY William J. Fox 2-8-1951
OFFICE OF COUNTY ENGINEER, REG. C.E. No. 1670

COUNTY ENGINEER
F.C. STILSON

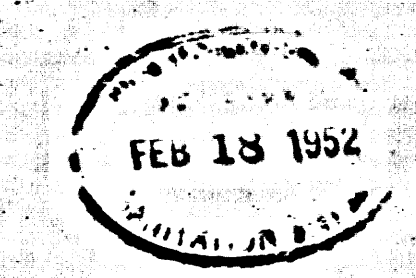
COUNTY ENGINEER
F.C. STILSON



PROFILE, ALIGNMENT AND GRADE OF
SANITARY SEWERS
 TO BE CONSTRUCTED IN
RENDOVA ST.
 BETWEEN HORST AVE. & ELAINE AVE.
ARTESIA BLVD.
 BETWEEN EASTERLY LINE OF TRACT No. 17393 & ELAINE AVE.
HORST AVE.
 BETWEEN ASHWORTH ST. & RENDOVA ST.

PRIVATE CONTRACT No. 2036
 W.S. 33
 SHEET 2 OF 2 SHEETS
 Scale: Vert. 1" = 8'
 Hor. 1" = 40' Dec. 1951
 PREPARED IN THE OFFICES OF
FRED C. STILSON

By *Fred C. Stilson*
 Reg. C.E. No. 1670
 FOR LEGEND
 See Plan No. 5-0-66



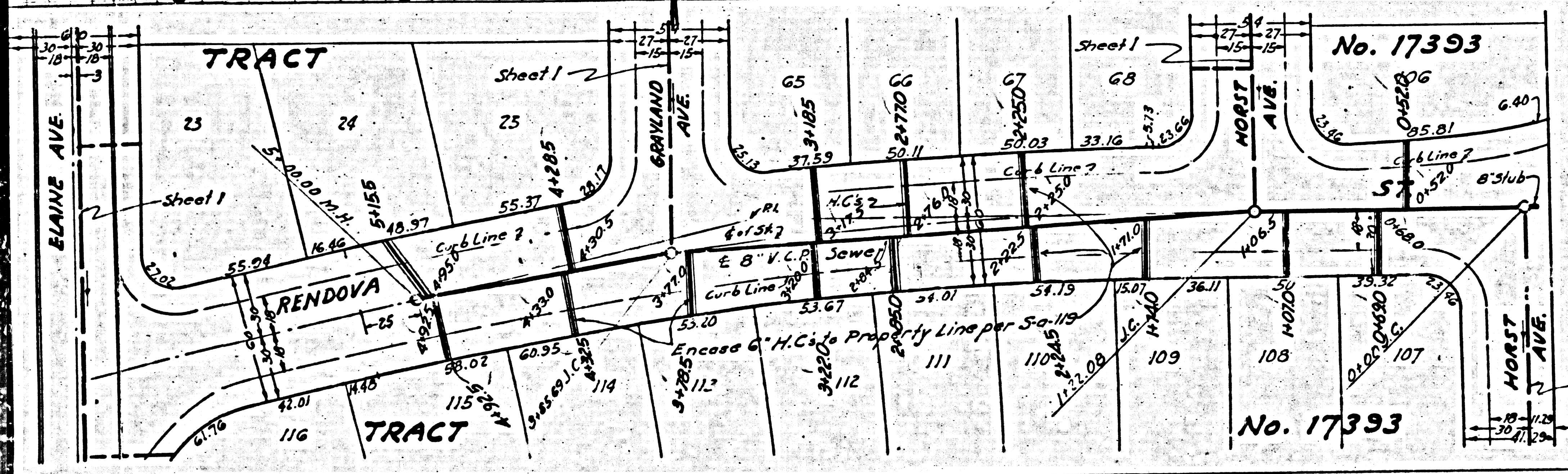
FOR CONSTRUCTION NOTES SEE SHEET 1

COUNTY OF LOS ANGELES, CALIFORNIA

WILLIAM J. FOX, COUNTY ENGINEER
 APPROVED BY *W. J. Fox*
 CHIEF DEPUTY

A. M. RAWN
 CHIEF ENGINEER
 BY *A. M. Rawn*
 OFFICE ENGINEER

CHECKED BY *H. L. Spitzer*
 OFFICE OF COUNTY ENGINEER, REG. C.E. No. 641

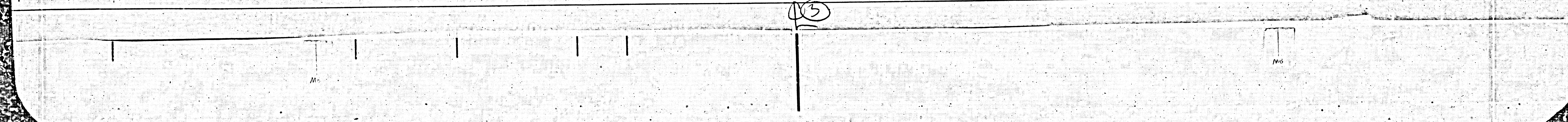
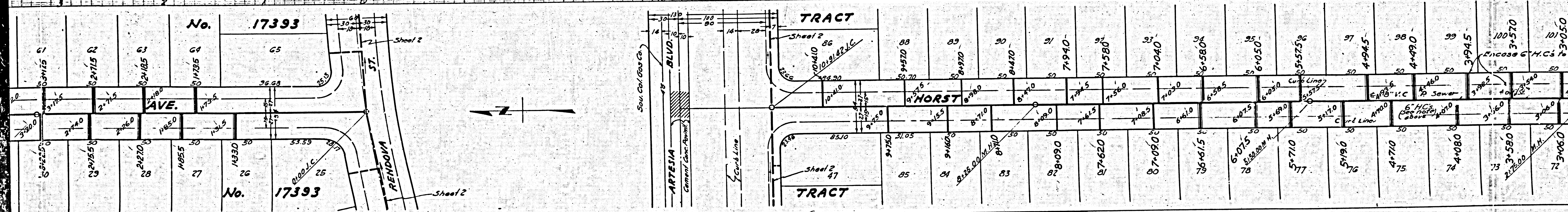
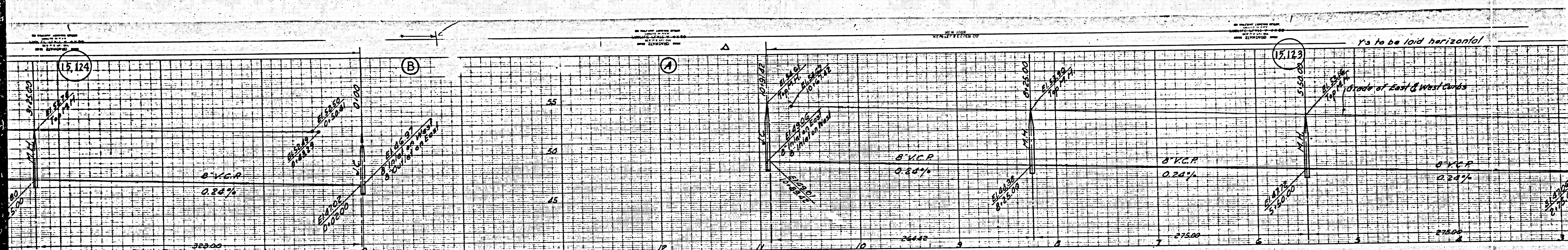


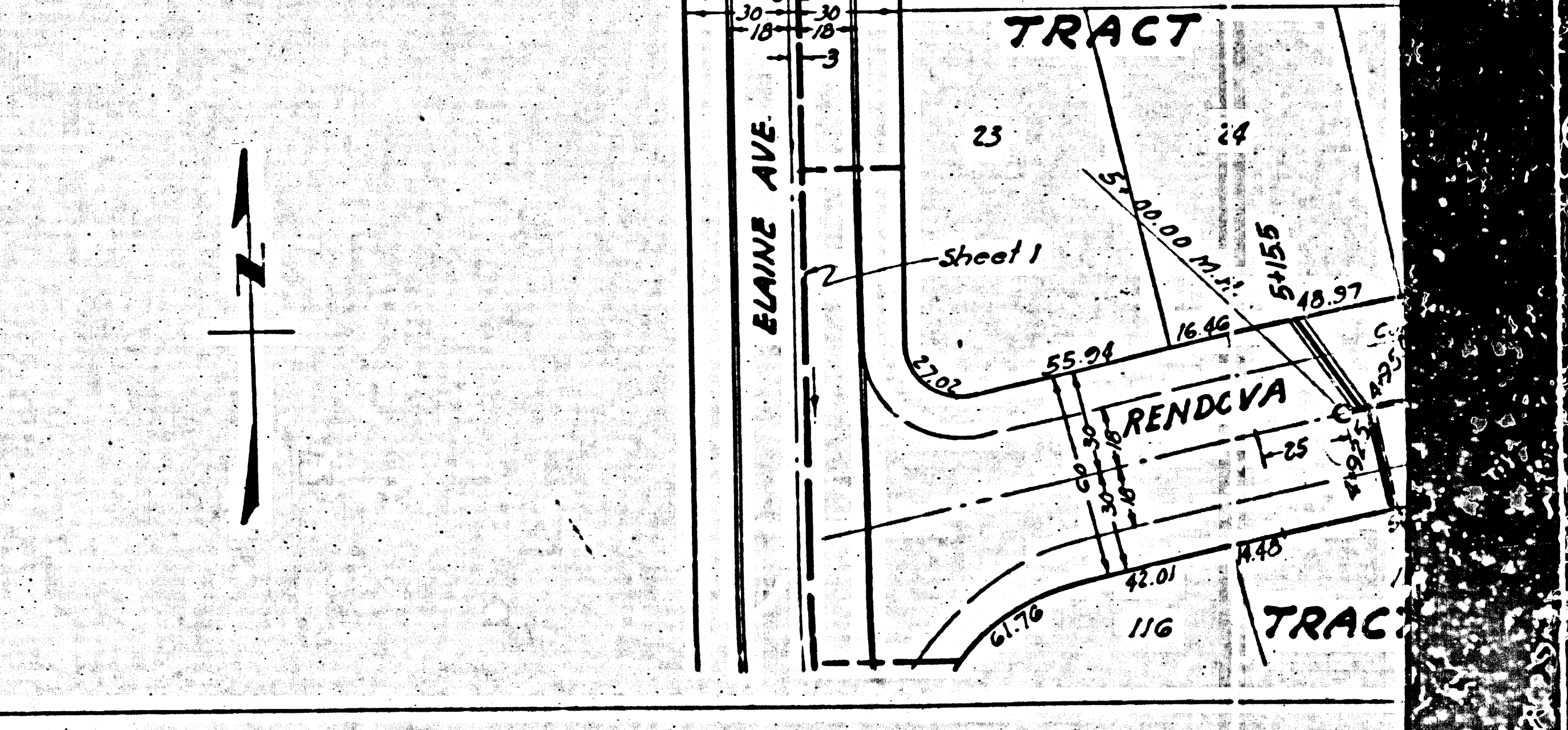
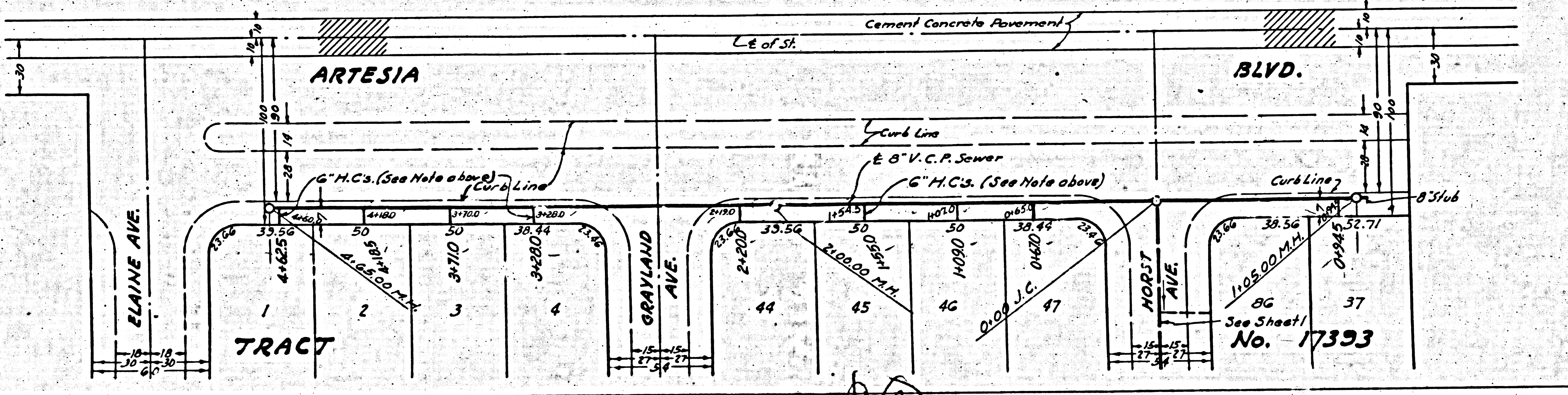
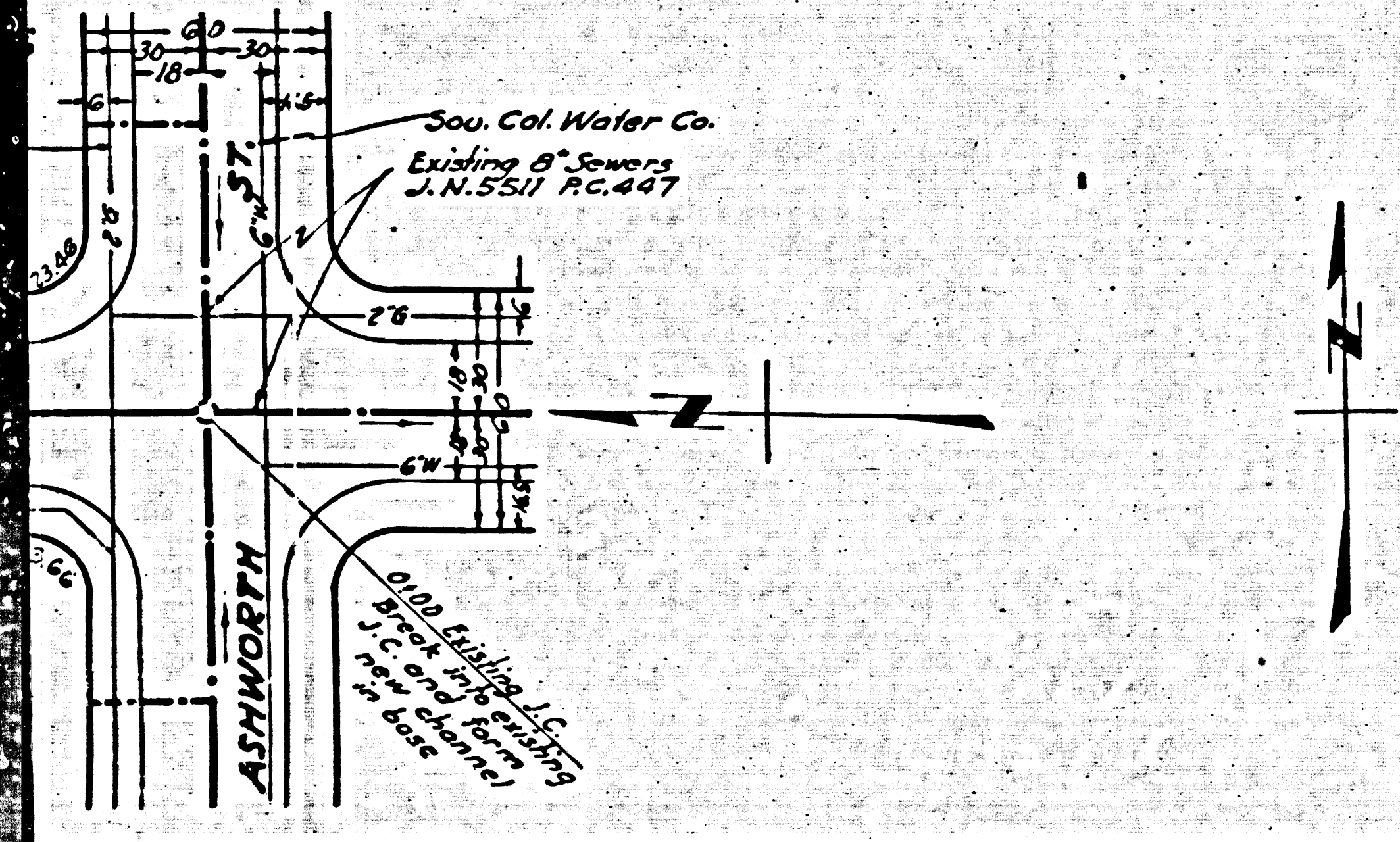
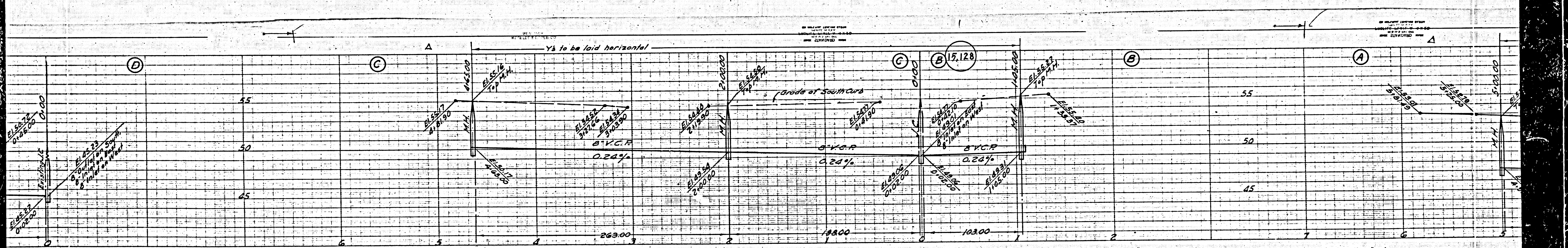
Before breaking into any existing structure
 and before final acceptance of this work,
 County Sanitation District should be notified
 in order that required inspection may be made.

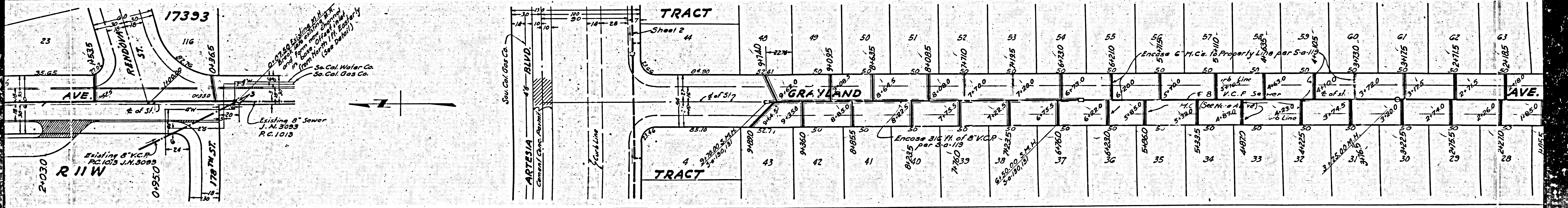
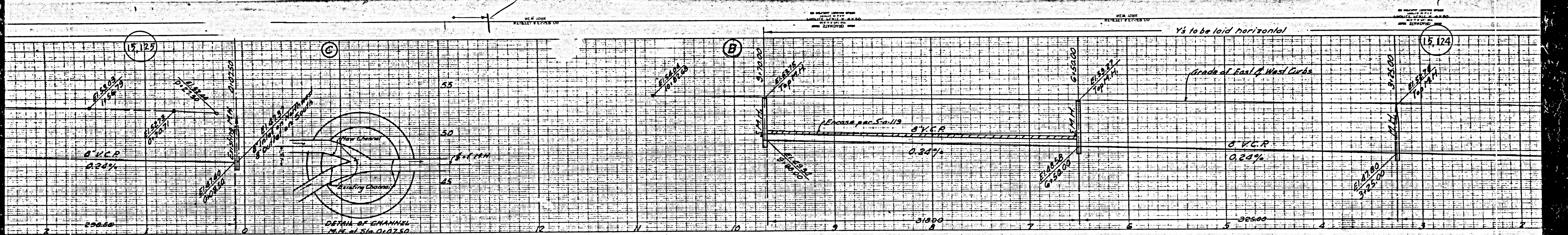
Trim Line

Trim Line

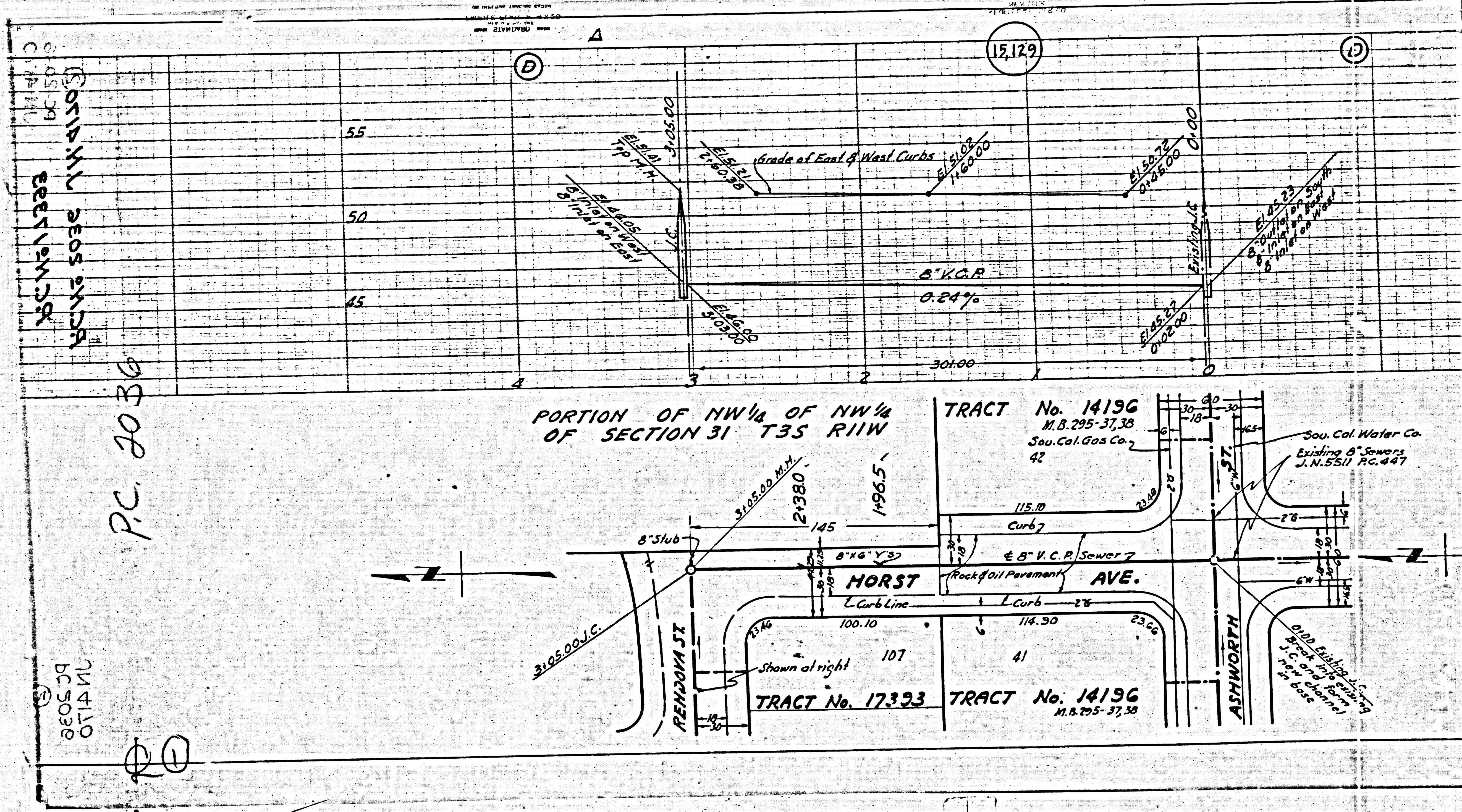
BC 5036
 711 5110
 BC 5036
 711 5110







(2)



15129
 15129
 15129

P.C. 2036

15129
 15129

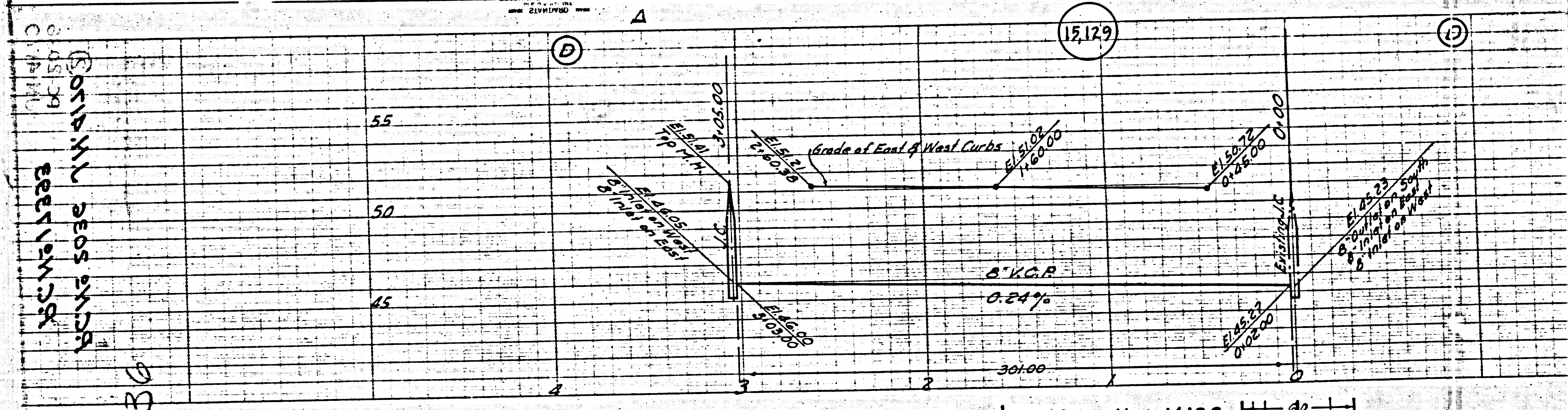
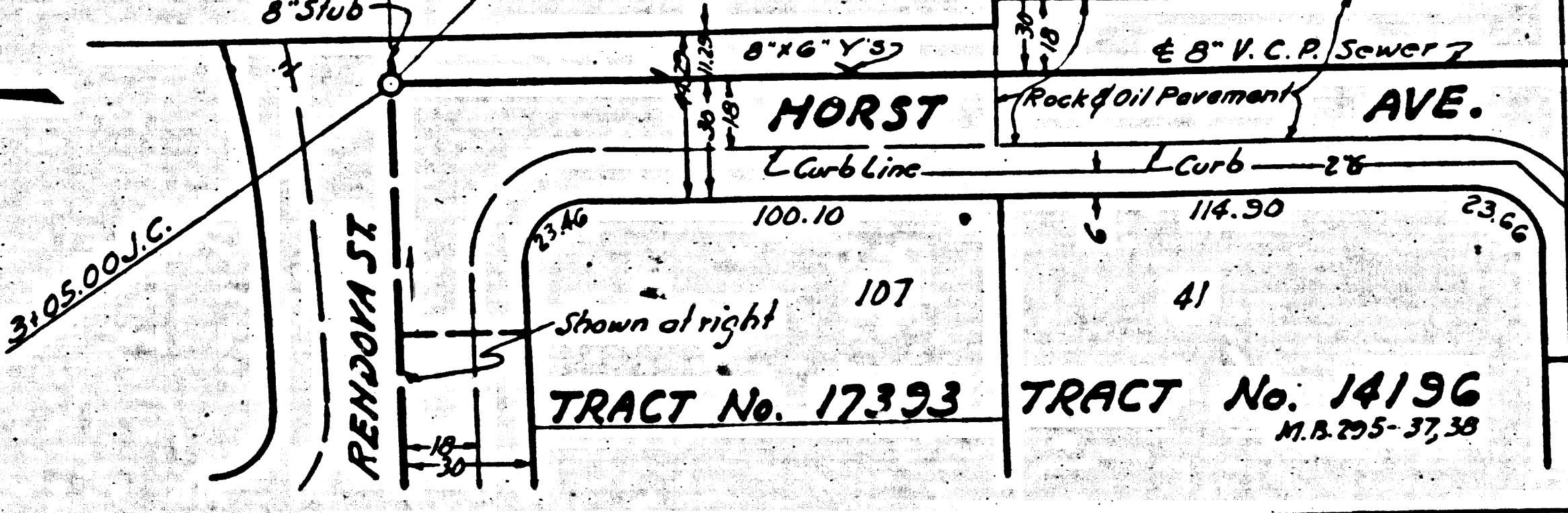
PORTION OF NW 1/4 OF NW 1/4
 OF SECTION 31 T35 R11W

TRACT No. 14196
 M.B. 295-37, 38
 Sou. Cal. Gas Co. 2
 42

TRACT No. 17393 TRACT No. 14196
 M.B. 295-37, 38

Sou. Cal. Water Co.
 Existing 8" Sewers
 J.N. 5571 P.C. 447

8" V.C.P. Sewer 7
 Rock & Oil Pavement
 8" V.C.P. Sewer 7
 8" V.C.P. Sewer 7



15129
 15129
 15129

P.C. 2036

15129
 15129

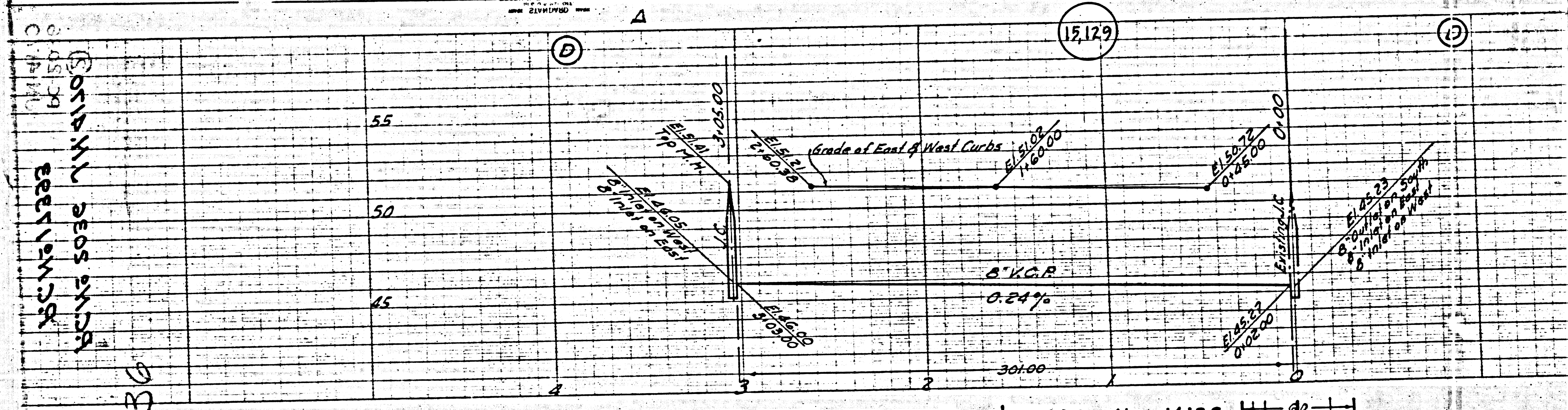
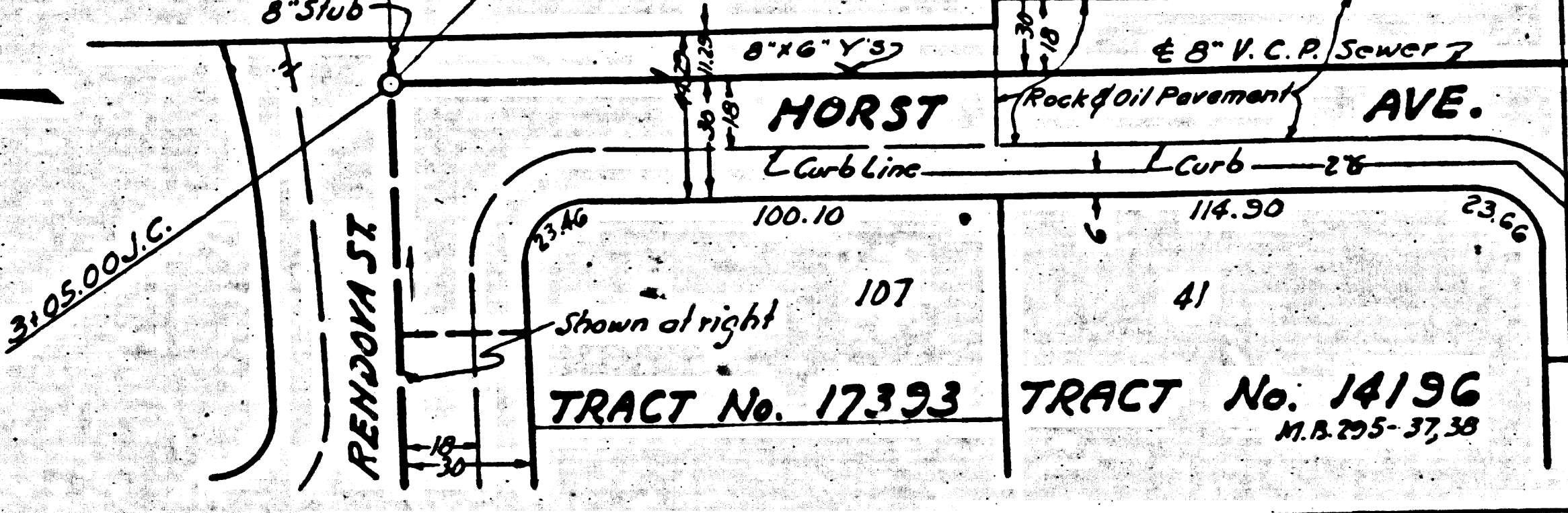
PORTION OF NW 1/4 OF NW 1/4
 OF SECTION 31 T35 R11W

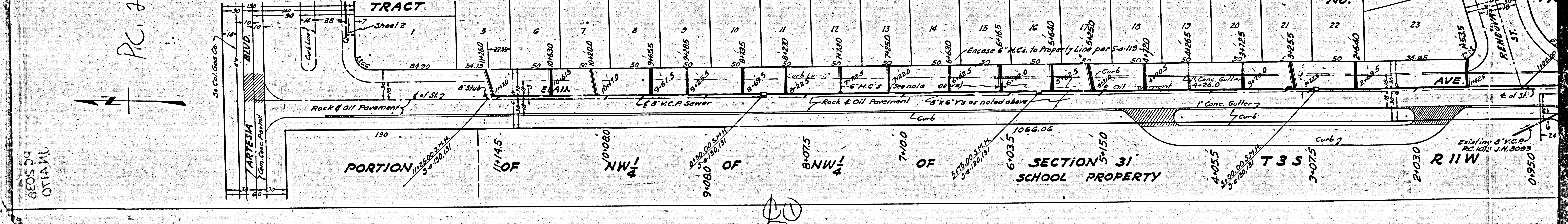
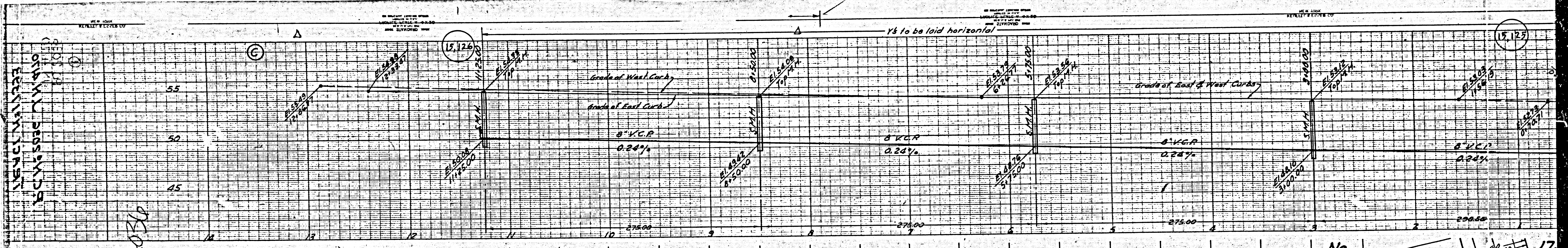
TRACT No. 14196
 M.B. 295-37, 38
 Sou. Cal. Gas Co. 2
 42

TRACT No. 17393 TRACT No. 14196
 M.B. 295-37, 38

Sou. Cal. Water Co.
 Existing 8" Sewers
 J.N. 5571 P.C. 447

8" V.C.P. Sewer 7
 Rock & Oil Pavement
 8" V.C.P. Sewer 7
 8" V.C.P. Sewer 7





PC 7036

3839
10141
010

(15,127)

No. 17

SECTION 31
SCHOOL PROPERTY

T 3 S

R 1 W

Existing 8\"/>