

USE STANDARD STRENGTH 14,664 EXCEPT AS NOTED
USE CEMENT MORTAR FOR ALL VITRIFIED CLAY PIPE JOINTS
ENCASE FOUR FEET OF SEWER AT POINTS OF INTERFERENCE WITH POLES AS PER S. 3.4.113
CONSTRUCT HOUSE CONNECTIONS WITH INVERT AT PROPOSED 5 FEET BELOW CURB GRADE EXCEPT AS NOTED
ALL STRUCTURES SHALL BE BRICK SEWER STRUCTURES AS PER PLAN NO. S-4-104 EXCEPT AS NOTED
USE STANDARD MANHOLE FRAMES AND COVERS AS PER PLAN NO. S-4-117 EXCEPT AS NOTED
CONSTRUCT ALL TRENCHES IN RIGHTS OF WAY 8' ABOVE FINISHED GRADE
RESURFACE ALL TRENCHES WITH PAVED AREA TO MEET LOS ANGELES COUNTY ROAD-DEPT. OR STATE HIGHWAY REQUIREMENTS IN ACCORDANCE WITH PERMIT
PROVIDE STAKES ON THE PROPERTY LINES OR PROPERTY LINES PRODUCED, AT RIGHT ANGLES TO THE SEWER LINE AT THE CENTER LINE OF EACH MANHOLE
NO REVISIONS SHALL BE MADE IN THESE PLANS WITHOUT APPROVAL OF THE COUNTY ENGINEER
NO REPRESENTATIVE OF THE COUNTY ENGINEER WILL SURVEY OR LAY OUT ANY PORTION OF THE WORK
THE OWNER OR HIS AUTHORIZED REPRESENTATIVE SHALL FURNISH THE COUNTY ENGINEER WITH GRADE SHEETS AND STATIONS OF ALL HOUSE CONNECTIONS AND Y BRANCHES AND SHALL PROVIDE STAKES FOR THEM AT THEIR PROPER LOCATIONS WITH STATIONING PLAINLY MARKED
ANY CHANGE OF LOCATION SHALL BE REQUESTED IN WRITING BY THE OWNER OR HIS REPRESENTATIVE

STOPPERS TO BE INSTALLED WITH JOINT COMPOUND BY MANUFACTURER AT HIS PLANT. SPECIFICATIONS - SECTION 33.48.
 CONCRETE PAVEMENT TO BE CUT NOT LESS THAN 2 INCHES IN DEPTH WITH CONCRETE SAW. SPECIFICATIONS - SECTION 65.

APPROVAL OF THIS PLAN BY THE COUNTY OF LOS ANGELES DOES NOT CONSTITUTE A REPRESENTATION AS TO THE ACCURACY OF THE LOCATION OF, OR THE EXISTENCE OR NON-EXISTENCE OF, ANY UNDERGROUND UTILITY, PIPE OR STRUCTURE WITHIN THE LIMITS OF THIS PROJECT.
 (THIS NOTE APPLIES TO ALL SHEETS)

BY: *W. J. Fox*
 COUNTY ENGINEER
 MAR 7 1932

NOTE: LA Co. Rd. Dept. 1930 Adj. elev. 1935/11

PROFILE ALIGNMENT AND GRADE OF
SANITARY SEWERS
 TO BE CONSTRUCTED IN
 TRACT NO 13814
 WALNUT WAY
 BETWEEN MULBERRY DRIVE AND LANNING DRIVE
 BARKERVILLE AVENUE
 BETWEEN WALNUT WAY AND LANNING DRIVE
 LANNING DRIVE
 BETWEEN BARKERVILLE AVENUE AND WALNUT WAY

PRIVATE CONTRACT NO. 2058
 W. S. 34
 SHEET 1 OF 2 SHEETS
 SCALE: VERT. 1"=4'
 HORIZ. 1"=40'

PREPARED IN THE OFFICES OF
KEMMERER ENG. CO.
 BY: *W. J. Fox*
 MAR 7 1932

FOR LEGEND
 SEE PLAN NO. S-4-64

NOTE: GRADES TO WHICH THIS IMPROVEMENT IS TO BE CONSTRUCTED ARE SHOWN ON PLANS AND PROFILES. GRADE POINTS FOR TOP OF CURB, CENTER LINE OF STREET OR CENTER LINE OF ALLEY ARE SHOWN BY CIRCLES ON PROFILES AT ALL POINTS BETWEEN DESIGNATED POINTS. THE GRADE SHALL BE ESTABLISHED SO AS TO CONFORM TO A STRAIGHT LINE DRAWN BETWEEN SAID DESIGNATED POINTS.
 ELEVATIONS ARE IN FEET ABOVE U. S. G. S. DATUM OR MEAN SEA LEVEL.
 THIS DRAWING AND THE DATA HEREON ARE HEREBY MADE A PART OF THE SPECIFICATIONS.
 WORK SHALL BE CONSTRUCTED ACCORDING TO SPECIFICATIONS ON FILE IN THE OFFICE OF THE COUNTY ENGINEER AND SHALL BE PROSECUTED ONLY IN THE PRESENCE OF THE COUNTY ENGINEER.
 BEFORE WORK CAN BE STARTED, THE CONTRACTOR MUST OBTAIN A PERMIT TO EXCAVATE IN COUNTY STREETS FROM THE L. A. COUNTY ROAD DEPT. 1030 W. 4TH ST., LOS ANGELES AND MAKE A DEPOSIT WITH THE COUNTY ENGINEER, ROOM 632 AT HIGHWAY 5 STREET, SUFFICIENT TO COVER THE COST OF CONSTRUCTION INSPECTION AND RECORD PLANS.
 IF WORK IS TO BE DONE IN A STATE HIGHWAY, A PERMIT MUST BE OBTAINED FROM THE STATE OF CALIFORNIA, DIVISION OF HIGHWAYS, 808 STATE BUILDING, AFTER MAKING THE DEPOSIT WITH THE COUNTY ENGINEER.

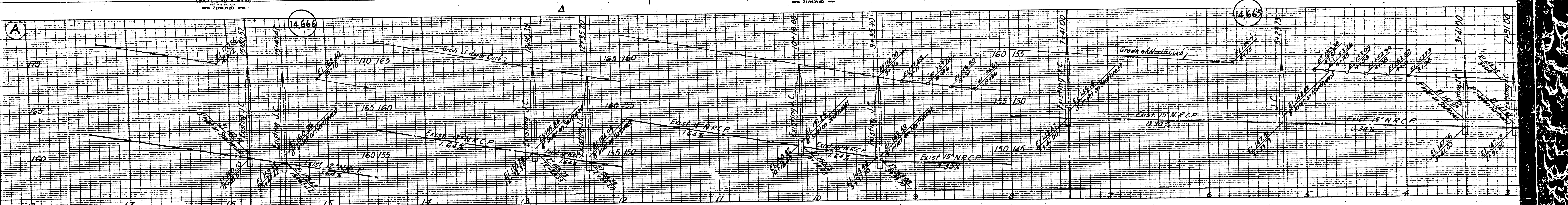
COUNTY OF LOS ANGELES, CALIFORNIA
 WILLIAM J. FOX, COUNTY ENGINEER
 APPROVED BY: *W. J. Fox* CHIEF DEPT.
 APPROVED BY: *W. J. Fox* OFFICE ENGINEER
 CHECKED BY: *W. J. Fox* OFFICE ENGINEER
 MAR 7 1932

1
 BC 5028

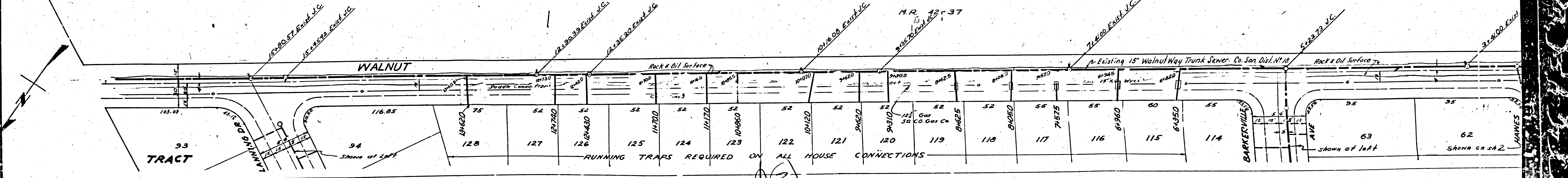
NEW YORK
KERSEY & PEPER CO.
ENGINEERS AND ARCHITECTS
NEW YORK

NEW YORK
KERSEY & PEPER CO.
ENGINEERS AND ARCHITECTS
NEW YORK

NEW YORK
KERSEY & PEPER CO.
ENGINEERS AND ARCHITECTS
NEW YORK



PORTION OF MAXSON'S SUBDIVISION OF GUNN AND HAZARDS SUBDIVISION OF THE CULLEN

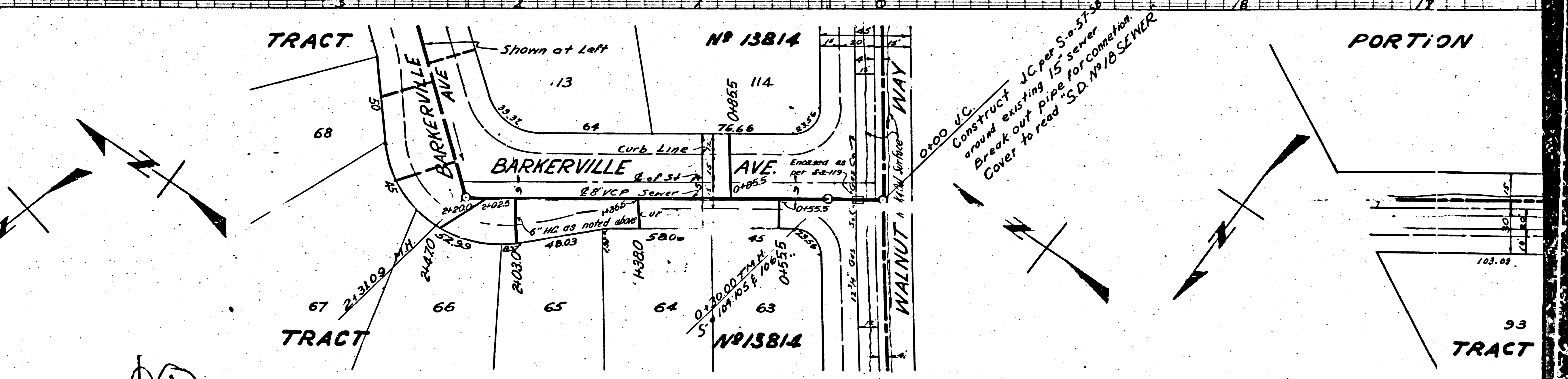
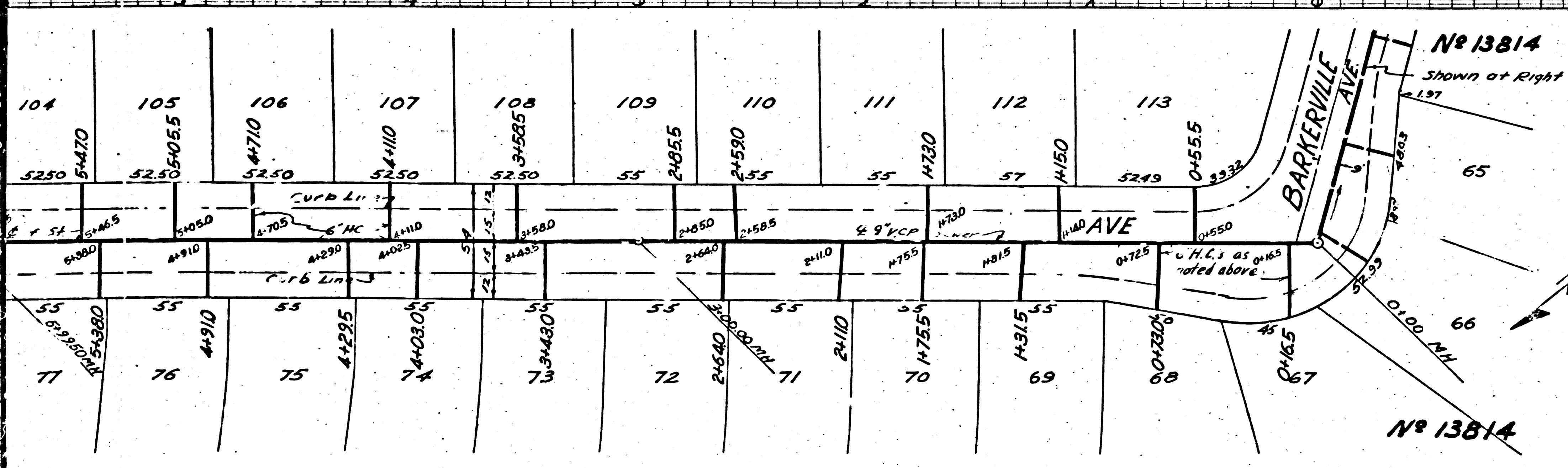
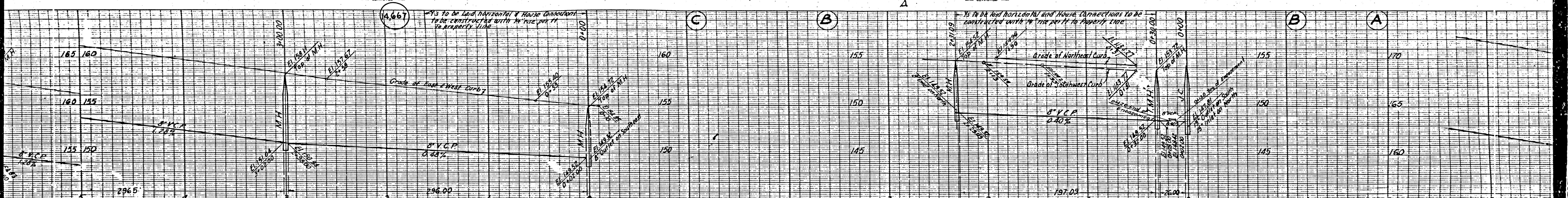


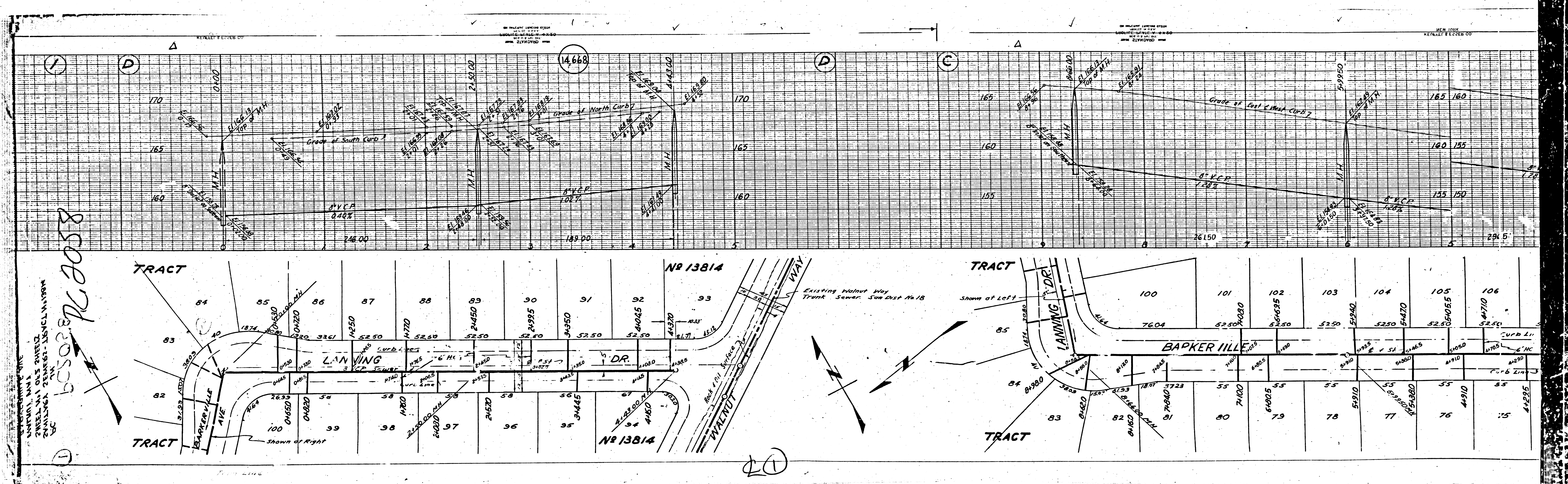
NEW YORK
REVELL & EPSTEIN CO.

NEW YORK
REVELL & EPSTEIN CO.

NEW YORK
REVELL & EPSTEIN CO.

NEW YORK
REVELL & EPSTEIN CO.



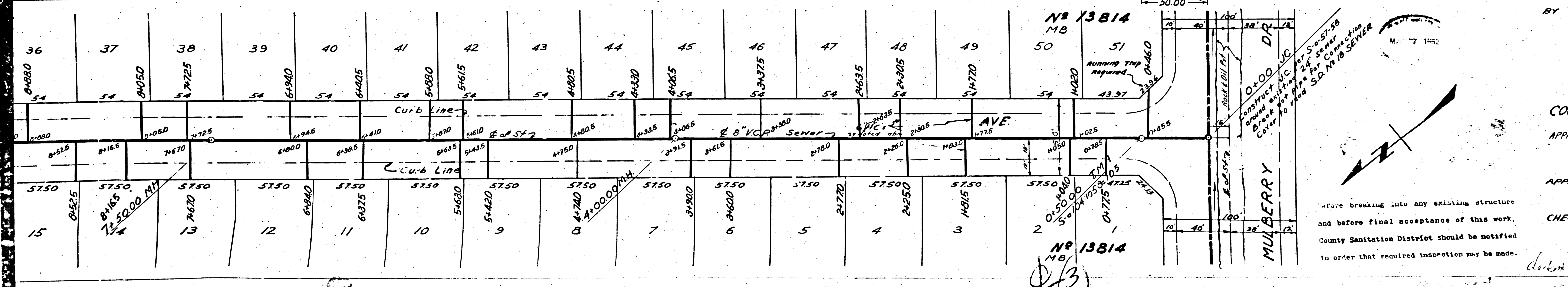
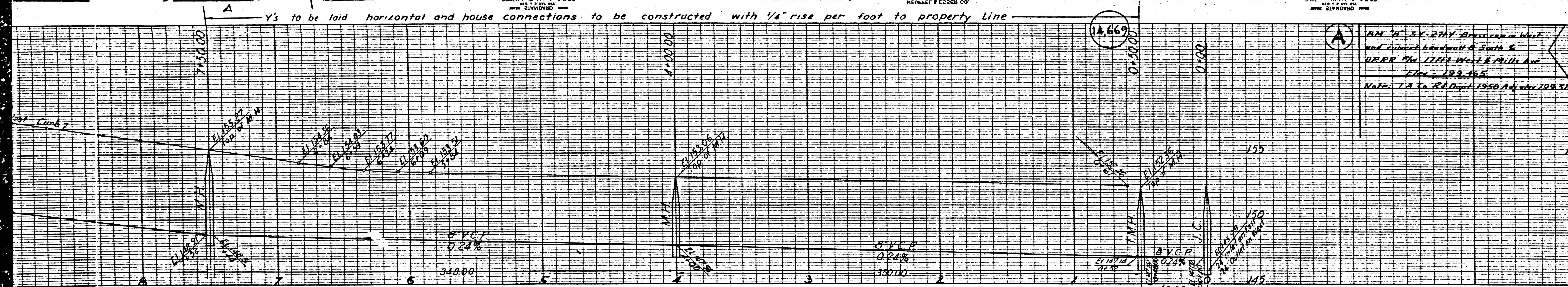


TRACT										TRACT						
84	85	86	87	88	89	90	91	92	93	100	101	102	103	104	105	106
NR 13814										NR 13814						
LANNING DR										BARKER AVE						
Shown of Right										Shown of Left						
Curb L.										Curb L.						
Curb R.										Curb R.						
Sewer										Sewer						
V.V.A.										V.V.A.						
WALNUT ST										WALNUT ST						

1500762058

20

Y's to be laid horizontal and house connections to be constructed with 1/4" rise per foot to property line



PROFILE ALIGNMENT AND GRADE OF SANITARY SEWERS TO BE CONSTRUCTED IN TRACT NO. 13814 ON COACHMAN AVENUE BETWEEN MULBERRY DR. AND LANNING DR. FIRST ALLEY NORTH OF MULBERRY DR. BETWEEN WALNUT WAY AND A POINT 192 FT. WESTERLY HAWES STREET BETWEEN WALNUT WAY AND A POINT 168.0 FT. WESTERLY PRIVATE CONTRACT NO. 2058 W.S. 34 SHEET NO. 2 OF 2 SHEETS SCALE: 1/8" = 1'-0" FEB. 1952 PREPARED IN THE OFFICE OF KEMMERER ENGR. CO., INC.

BY W. J. Fox REG. C.E. NO. 7281
FOR LEGEND SEE PLAN S-4-64
SEE SHEET NO. 1 FOR CONSTRUCTION NOTES

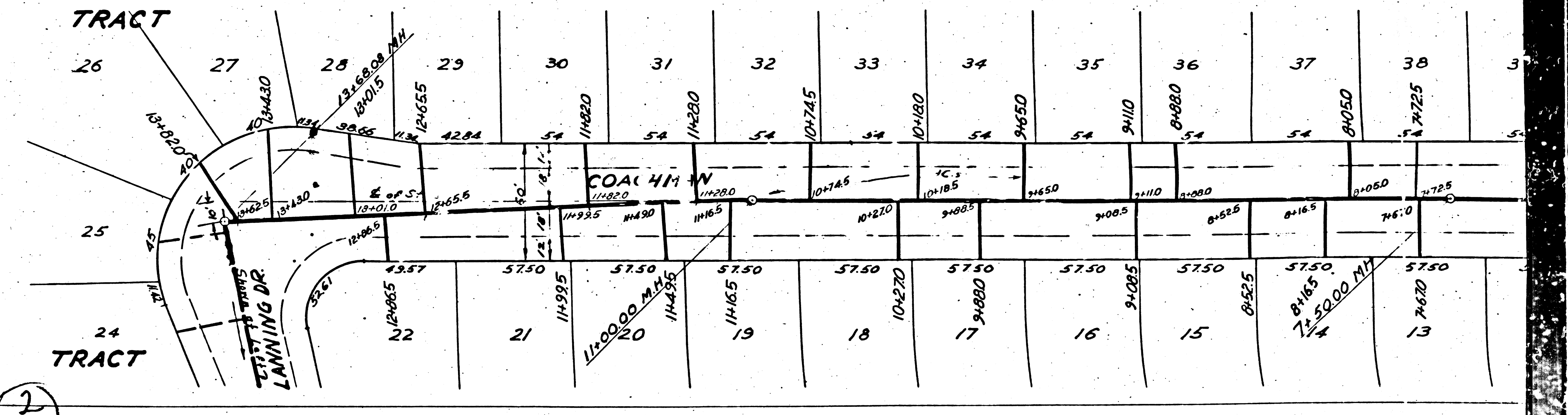
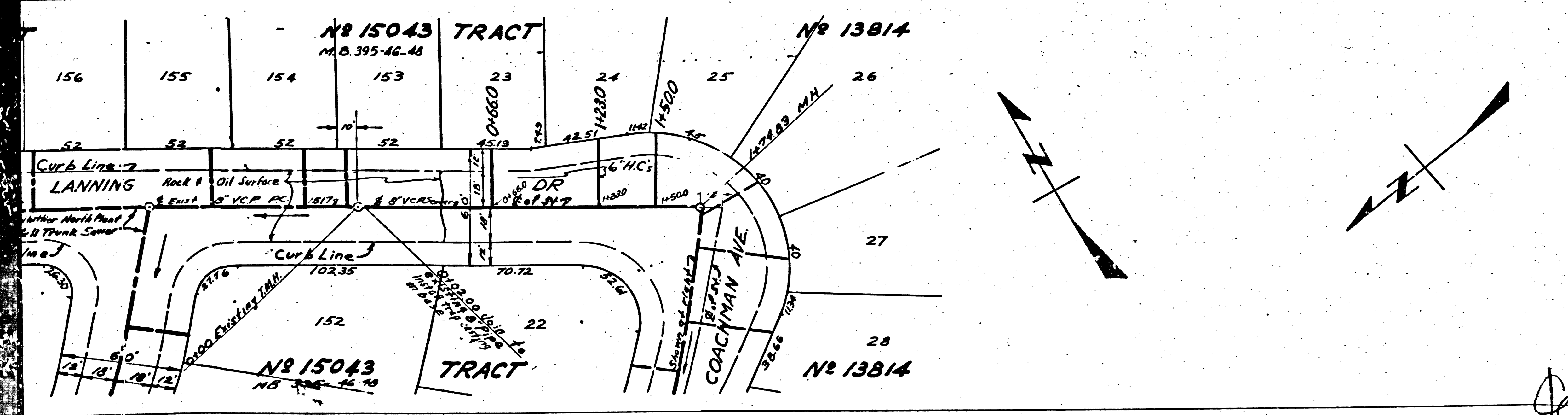
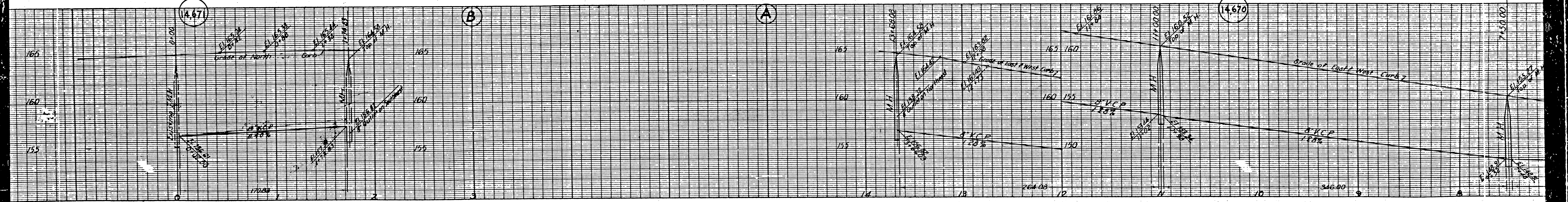
COUNTY OF LOS ANGELES, CALIFORNIA
APPROVED, WILLIAM J. FOX, COUNTY ENGINEER
BY W. J. Fox CHIEF DEPUTY
APPROVED BY A. M. Rawm OFFICE ENGINEER
CHIEF ENGINEER
SANITATION DISTRICT NO. 18
CHECKED BY Robert E. Kuhn 2-27-52
OFFICE OF COUNTY ENGINEER
REG. C.E. NO. 7860

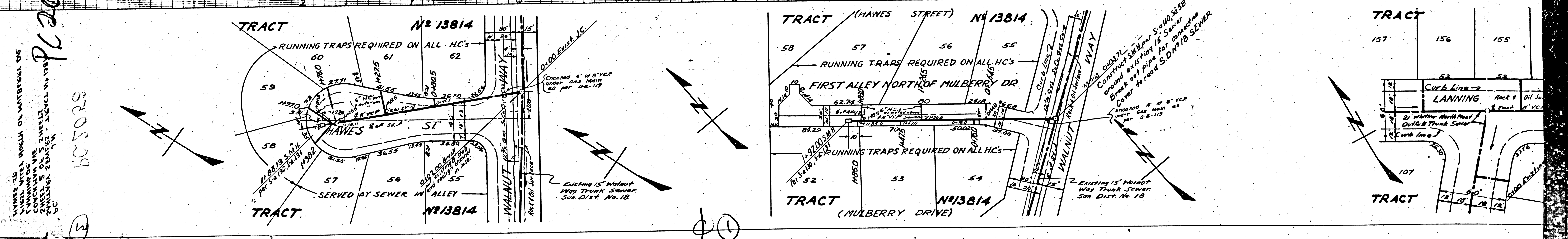
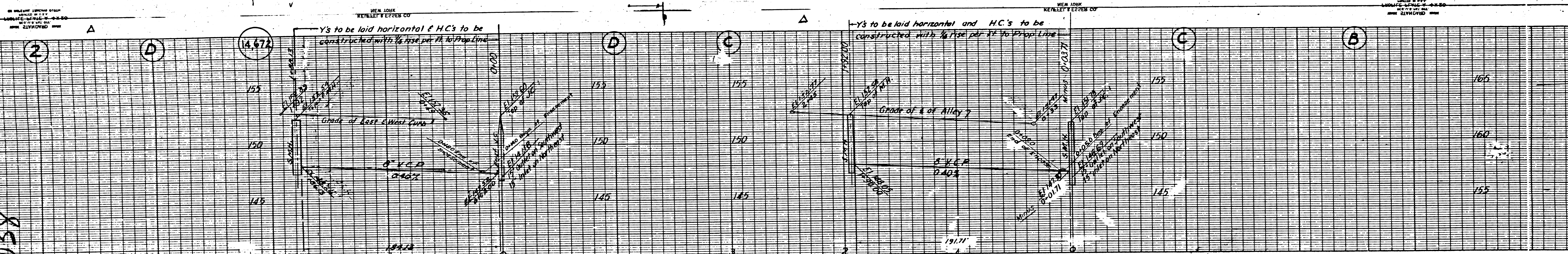
*Have breaking into any existing structure and before final acceptance of this work. County Sanitation District should be notified in order that required inspection may be made.

done 6-22-52 W. J. Fox

13

NEW YORK
KENNEL & FEEBEN CO.
SURVEYORS
NEW YORK





850277
 820509
 3

NEW YORK
 KEENEY & EPSTEIN CO.
 ENGINEERS
 100 W. 42ND ST.
 NEW YORK 36, N.Y.

NEW YORK
 KEENEY & EPSTEIN CO.
 ENGINEERS
 100 W. 42ND ST.
 NEW YORK 36, N.Y.

NEW YORK
 KEENEY & EPSTEIN CO.
 ENGINEERS
 100 W. 42ND ST.
 NEW YORK 36, N.Y.