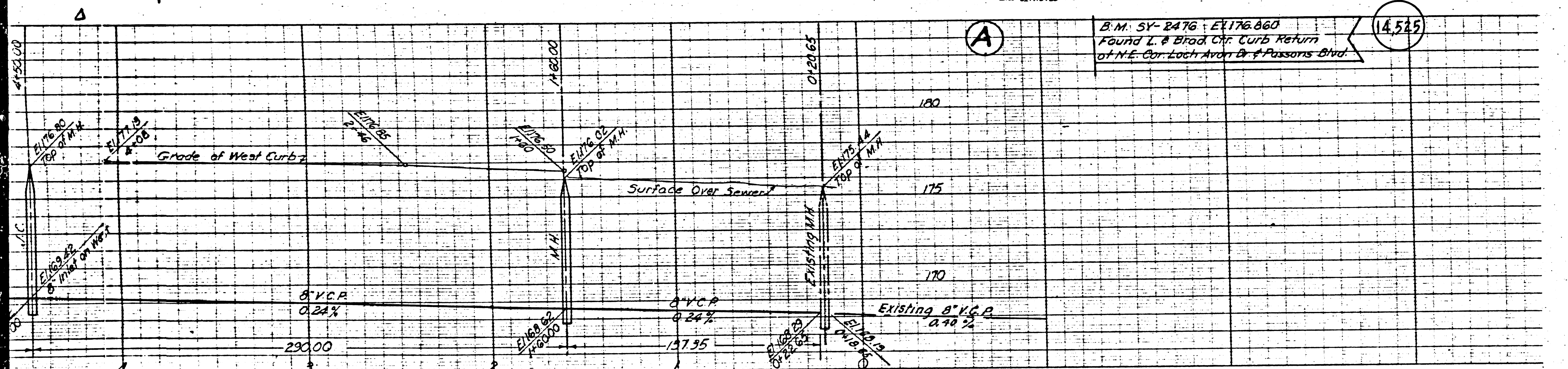
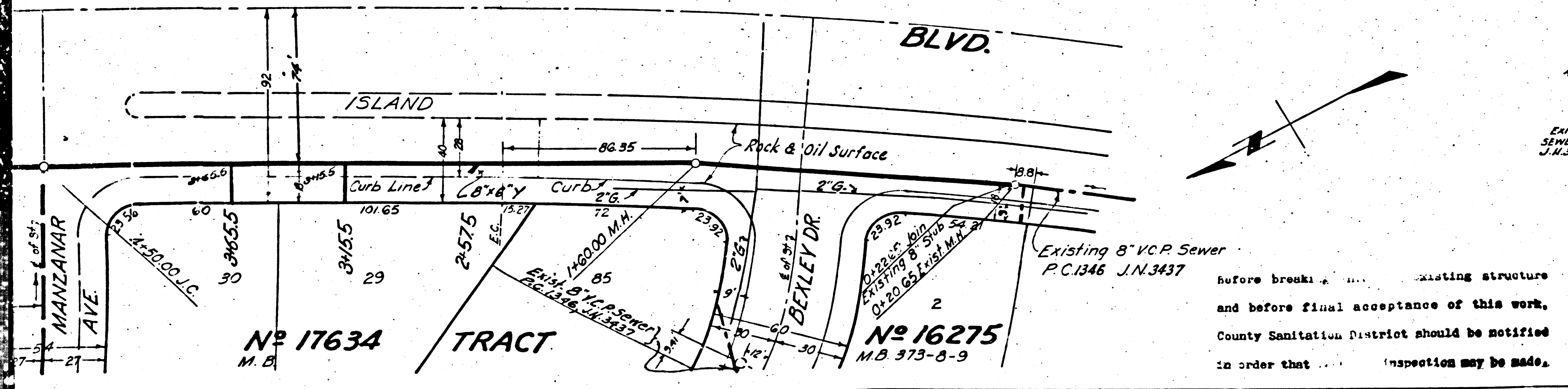


WHITTIER



B.M. 51-2476; EY 176 060
 Found L & Broad Curb Return
 of N.E. Cur Lock Area B & Passaris Blvd

(14,525)



INDEX MAP

Scale 1" = 600'
 P.C. 2053 J.N. 4196

USE STANDARD STRENGTH PIPE
 USE CEMENT MORTAR FOR ALL VITRIFIED CLAY PIPE JOINTS
 ENCASE FOUR FEET OF SEWER AT POINTS OF INTERFERENCE WITH POLES AS PER S-4115
 CONSTRUCT HOUSE CONNECTIONS WITH INVERT AT PROP. LINE 5 FEET BELOW CURB GRADE EXCEPT AS NOTED
 ALL STRUCTURES SHALL BE BRICK SEWER STRUCTURES AS PER PLAN NO. S-4-104 EXCEPT AS NOTED
 USE STANDARD MANHOLE FRAMES AND COVERS AS PER PLAN NO. S-4-117 EXCEPT AS NOTED
 CONSTRUCT TOPS OF ALL STRUCTURES IN RIGHTS OF WAY AT ABOVE FINISHED GRADE
 RESURFACE ALL TRENCHES WITHIN PAVED AREA TO MEET LOS ANGELES COUNTY ROAD DEPT. OR STATE HIGHWAY REQUIREMENTS IN ACCORDANCE WITH PERMIT
 PROVIDE STAKES ON THE PROPERTY LINES OR PROPERTY LINES PRODUCED, AT RIGHT ANGLES TO THE SEWER LINE AT THE CENTER LINE OF EACH MANHOLE
 NO REVISIONS SHALL BE MADE IN THESE PLANS WITHOUT APPROVAL OF THE COUNTY ENGINEER
 NO REPRESENTATIVE OF THE COUNTY ENGINEER WILL SURVEY OR LAY OUT ANY PORTION OF THE WORK
 THE OWNER OR HIS AUTHORIZED REPRESENTATIVE SHALL FURNISH THE COUNTY ENGINEER WITH GRADE SHEETS AND STATIONS, ALL HOUSE CONNECTIONS AND Y BRANCHES, AND SHALL PROVIDE STAKES FOR THEM AT THEIR PROPER LOCATIONS WITH STATIONING PLAINLY MARKED
 ANY CHANGE OF LOCATION SHALL BE REQUESTED IN WRITING BY THE OWNER OR HIS REPRESENTATIVE

STOPPERS TO BE INSTALLED WITH JOINT COMPOUND BY MANUFACTURER AT HIS PLANT. SPECIFICATIONS - SECTION 33.4B.
 CONCRETE PAVEMENT TO BE CUT NOT LESS THAN 2 INCHES IN DEPTH WITH CONCRETE SAW. SPECIFICATIONS - SECTION 65.

APPROVAL OF THIS PLAN BY THE COUNTY OF LOS ANGELES DOES NOT CONSTITUTE A REPRESENTATION AS TO THE ACCURACY OF THE LOCATION OF, OR THE EXISTENCE OR NON-EXISTENCE OF, ANY UNDERGROUND UTILITY, PIPE OR STRUCTURE WITHIN THE LIMITS OF THIS PROJECT.
 (THIS NOTE APPLIES TO ALL SHEETS)

REVISION CHECKED *Richard E. Kubler* 3-14-52
 OFFICE OF COUNTY ENGINEER REG. C.E. 7860

SCALE 1" = 600'
 P.C. 2053 J.N. 4196

PROFILE ALIGNMENT AND GRADE OF
SANITARY SEWERS
 TO BE CONSTRUCTED IN
TRACT NO 17634
ROSEMEAD BLVD.
MANZANAR AVE.
BRIDGEVIEW AVE.

PRIVATE CONTRACT NO. 2552
 W. S. 36
 SHEET 1 OF 1 SHEETS

SCALE: VERT. 1" = 4'
 HORIZ. 1" = 40'

PREPARED IN THE OFFICES OF
KEMMERER ENG. CO.
 BY *Wm. C. Thomsen*
 REG. C. E. NO. 8244

FOR LEGEND
 SEE PLAN NO. S-4-84

NOTE:
 GRADES TO WHICH THIS IMPROVEMENT IS TO BE CONSTRUCTED ARE SHOWN ON PLANS AND PROFILES
 GRADE POINTS FOR TOP OF CURB, CENTER LINE OF STREET OR CENTER LINE OF ALLEY ARE SHOWN BY
 CIRCLES ON PROFILES AT ALL POINTS BETWEEN DESIGNATED POINTS THE GRADE SHALL BE ESTABLISHED
 SO AS TO CONFORM TO A STRAIGHT LINE DRAWN BETWEEN SAID DESIGNATED POINTS.
 ELEVATIONS ARE IN FEET ABOVE U. S. C. & G. DATUM OR MEAN SEA LEVEL.
 THIS DRAWING AND THE DATA HEREON ARE HEREBY MADE A PART OF THE SPECIFICATIONS.
 WORK SHALL BE CONSTRUCTED ACCORDING TO SPECIFICATIONS ON FILE IN THE OFFICE OF THE
 COUNTY ENGINEER AND SHALL BE PROSECUTED ONLY IN THE PRESENCE OF THE COUNTY ENGINEER.
 BEFORE WORK CAN BE STARTED, THE CONTRACTOR MUST OBTAIN A PERMIT TO EXCAVATE IN
 THE COUNTY ENGINEER'S ROOM 830 AT 108 WEST STREET, SUFFICIENT TO COVER THE COST OF
 CONSTRUCTION INSPECTION AND RECORD PLANS.
 IF WORK IS TO BE DONE IN A STATE HIGHWAY A PERMIT MUST BE OBTAINED FROM THE STATE
 OF CALIFORNIA, DIVISION OF HIGHWAYS, 808 STATE BUILDING, AFTER MAKING THE DEPOSIT WITH THE
 COUNTY ENGINEER.

COUNTY OF LOS ANGELES, CALIFORNIA
 WILLIAM J. FOX, County Engineer
 APPROVED *Wm. C. Thomsen*
 AM. EXAMINER
 APPROVED BY *Richard E. Kubler* OFFICE ENCL.
 SANITATION DISTRICT NO. 2

Checked 6-10-52 *Richard E. Kubler* CHECKED BY *Richard E. Kubler* 6-12-52
 OFFICE OF COUNTY ENGINEER REG. C. E. NO. 7860

SHEET NO. 1 OF 1 SHEETS
 DRAWING NUMBER 2552
 PROJECT NO. 17634
 W. S. 36
 SHEET 1 OF 1 SHEETS
 P.C. 2053 J.N. 4196

BY MUTUAL CONSENT OF THE PARTIES TO THIS DEED, THE FOLLOWING PROPERTY IS HEREBY CONVEYED TO THE STATE OF NEW JERSEY:

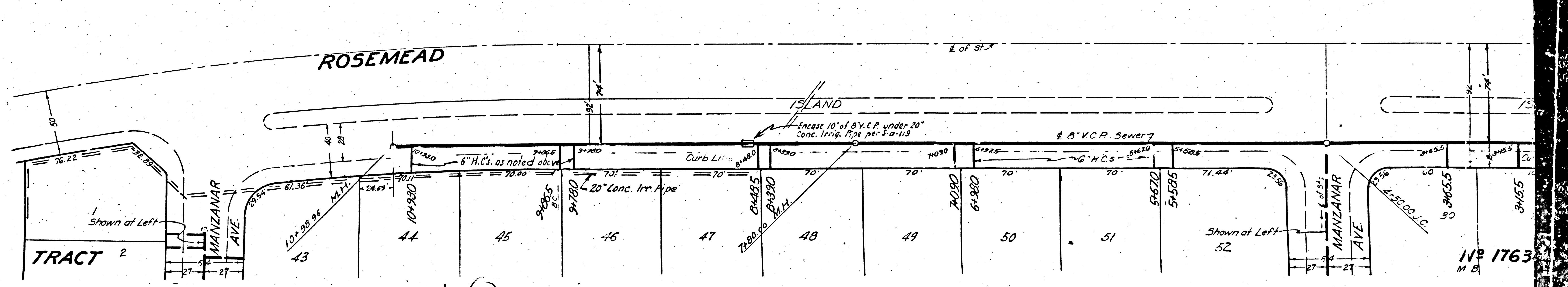
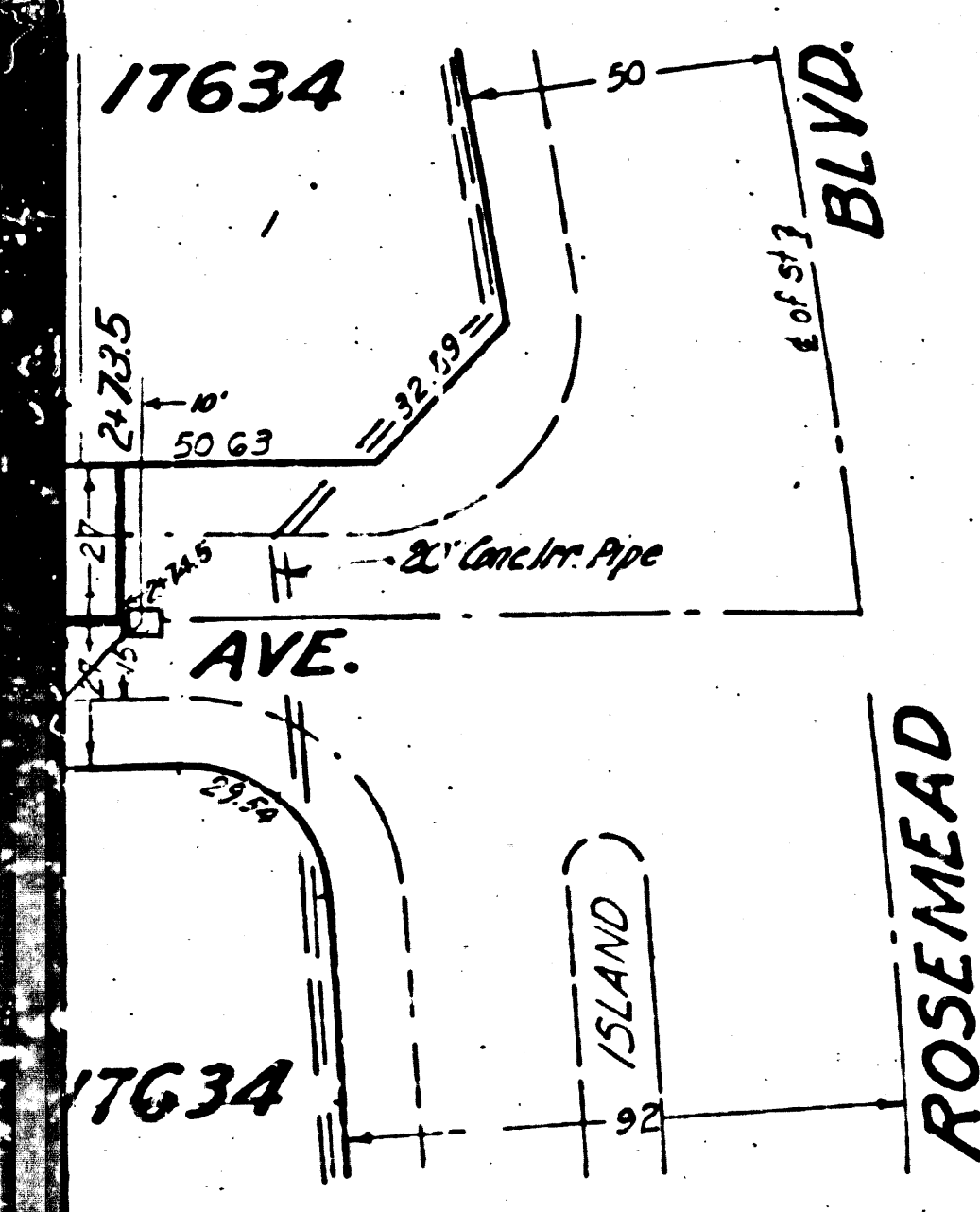
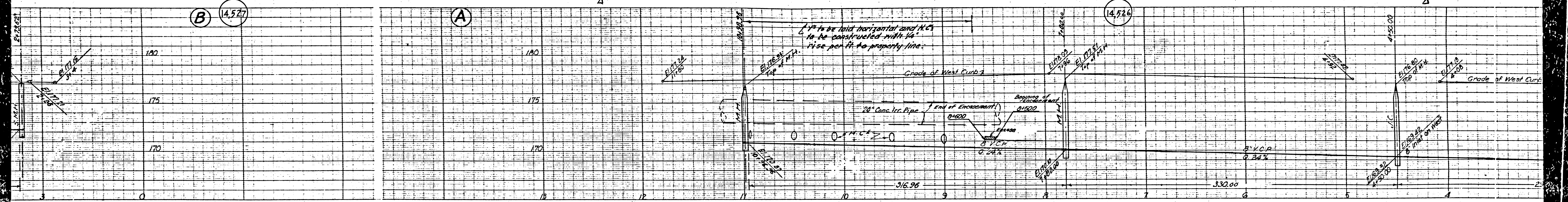
BY MUTUAL CONSENT OF THE PARTIES TO THIS DEED, THE FOLLOWING PROPERTY IS HEREBY CONVEYED TO THE STATE OF NEW JERSEY:

NEW YORK
WILLIAM F. FESSENDEN, CIVIL ENGINEER

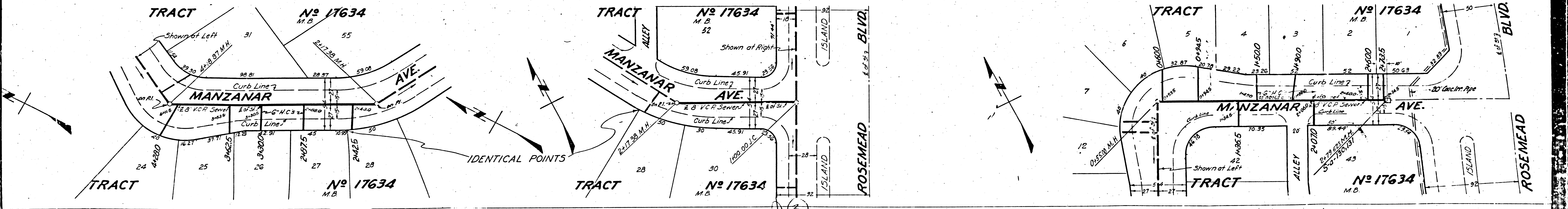
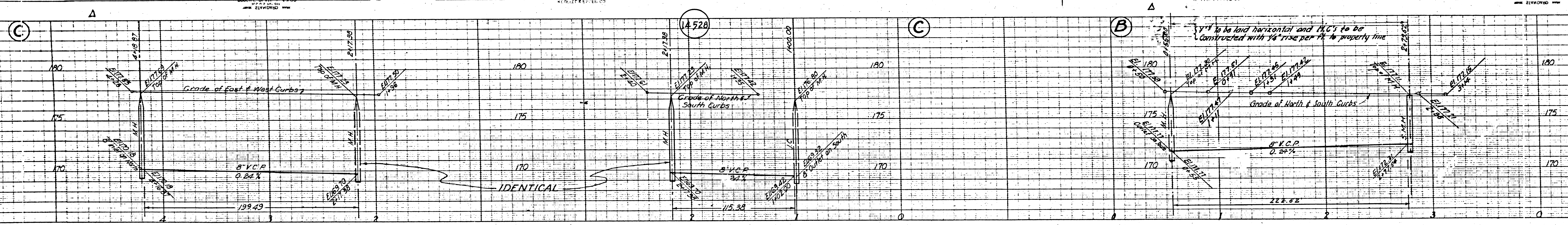
(B) 14,527

(A) 14,527

14,526



(1)

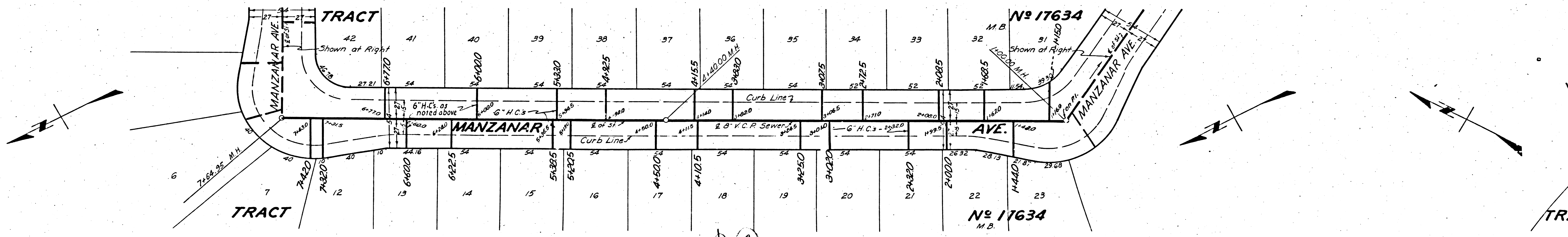
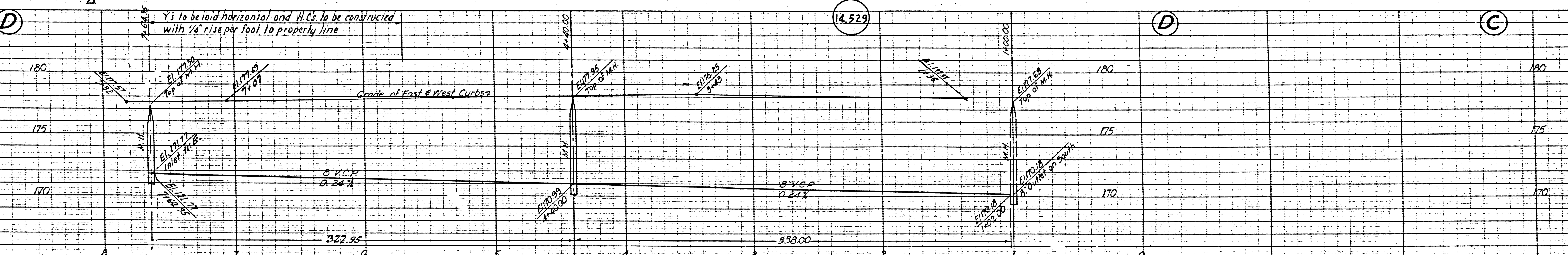


13

BY WILSON JENNINGS ENGINEER
REGISTERED PROFESSIONAL ENGINEER
NO. 21017-020

NOV 1938
REVISIONS

BY WILSON JENNINGS ENGINEER
REGISTERED PROFESSIONAL ENGINEER
NO. 21017-020



12

