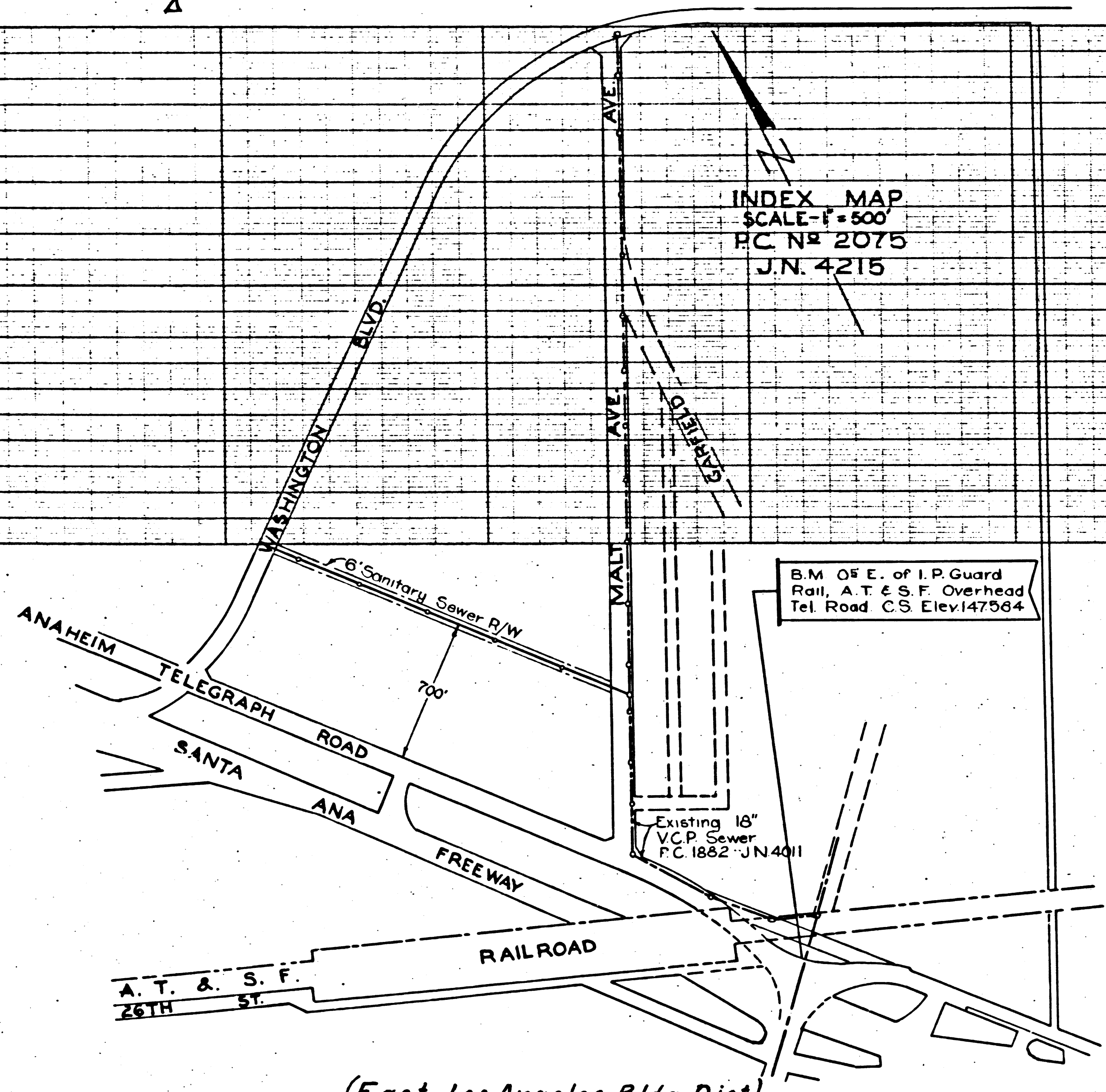


HEAL 100K
HENLEY & ESTER CO

ON MILLARY LINES FROM
UNOBTAINED FROM
HEAL 100K
HEAL 100K
HEAL 100K

HEAL 100K
HENLEY & ESTER CO

ON MILLARY LINES FROM
UNOBTAINED FROM
HEAL 100K
HEAL 100K
HEAL 100K



Use extra strength pipe.
Use C.P.I. # 2 for all vitrified clay pipe joints.
Encase four feet of sewer at points of interference with poles as per S-118.
All structures shall be brick sewer structures as per Plan No. 5-a-104.
Use standard manhole frames and covers as per Plan No. 5-a-117.
Resurface all trenches within paved area to meet Los Angeles County Road Dept. requirements.
House connections to be constructed on 1/4" rise per foot to property line. No revisions shall be made in these plans without approval of the County Engineer.
No representative of the County Engineer will survey or lay out any portion of the work.
The Owner or his authorized representative shall furnish the County Engineer with grade sheets and stations of all house connections and Y-branches and shall provide stakes for them at their proper locations with stationing plainly marked.
Any change of location shall be requested in writing by owner or his representative. Before any connection for the disposal of liquid industrial waste is to be made to this sewer detailed plans must be submitted to and a permit secured from the County Engineer.
Sanitation District must be notified before work can start.
Underground Note:
Approval of this plan by the County of Los Angeles does not constitute a representation as to the accuracy of the location of or the existence or non-existence of, any underground pipe, utility, or structure within the limits of this project.
Stoppers to be installed with joint material by the manufacturer at his plant. Specs Sec 33.48.
Concrete pavement to be cut not less than 2' in depth with a concrete saw. Spec. Sec. 65.

14,867

PROFILE, ALIGNMENT AND GRADE OF
SANITARY SEWER
TO BE CONSTRUCTED IN
SANITARY SEWER R/W
BETWEEN
**MALT AVE &
WASHINGTON BLVD.**
700' NORTHEASTERLY OF ANAHEIM - TELEGRAPH ROAD
PRIVATE CONTRACT NO. 2075
W.S. 36
SHEET 1 OF 1 SHEET
PREPARED IN THE OFFICES OF
CENTRAL MANUFACTURING DISTRICT INC.
CHECKED AND APPROVED BY *Charles G. Miller*
REG. C. E. NO. 122

SCALE: VERT. 1"=4'
HORIZ. 1"=40'

FEBRUARY 1952

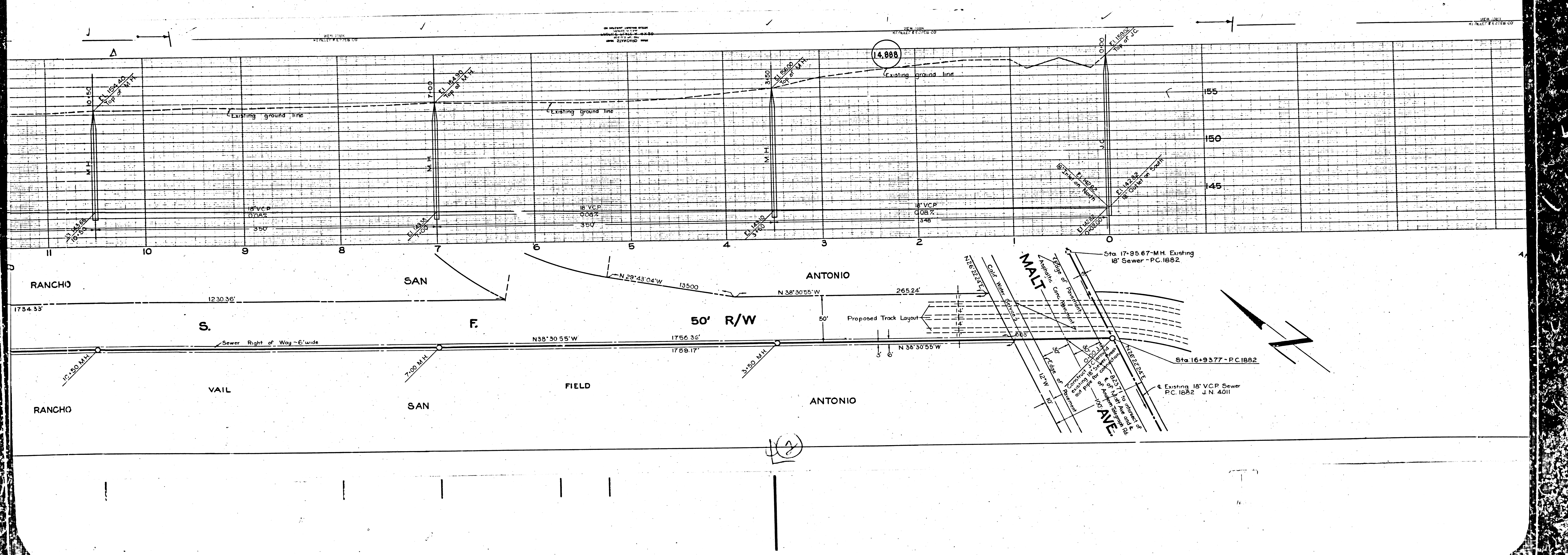
FOR LEGEND
SEE PLAN NO. 5-a-64

GRADES TO WHICH THIS IMPROVEMENT IS TO BE CONSTRUCTED ARE SHOWN ON PLANS AND PROFILES. GRADE POINTS FOR TOP OF CURB, CENTER LINE OF STREET OR CENTER LINE OF ALLEY ARE SHOWN BY CIRCLES ON PROFILES. AT ALL POINTS BETWEEN DESIGNATED POINTS THE GRADE SHALL BE ESTABLISHED SO AS TO CONFORM TO A STRAIGHT LINE BETWEEN SAID DESIGNATED POINTS.
ELEVATIONS ARE IN FEET ABOVE U.S.G.S. DATUM OR MEAN SEA LEVEL.
THIS DRAWING AND THE DATA HEREON ARE HEREBY MADE A PART OF THE SPECIFICATIONS WORK SHALL BE CONSTRUCTED ACCORDING TO SPECIFICATIONS ON FILE IN THE OFFICE OF THE COUNTY ENGINEER AND SHALL BE PROSECUTED ONLY IN THE PRESENCE OF THE COUNTY ENGINEER.
BEFORE WORK CAN BE STARTED THE CONTRACTOR MUST OBTAIN A PERMIT TO EXCAVATE IN COUNTY STREETS FROM THE L.A. COUNTY ROAD DEPT. 211 SOUTH MAIN ST. AND MAKE A DEPOSIT WITH THE COUNTY ENGINEER, 828 L.A. CO. ENGINEER BLDG. SUFFICIENT TO COVER THE COST OF CONSTRUCTION, INSPECTION AND RECORD PLANS.

WILLIAM J. DIX COUNTY ENGINEER
APPROVED BY *W. J. Dixon* CHIEF DEPUTY
A. M. BROWN OFFICE ENGINEER
APPROVED BY *A. M. Brown* CHIEF ENGINEER OF COUNTY
J. SANITATION DISTRICT NO. 2
CHECKED BY *Richard E. Fisher* MAY 5, 1952
OFFICE OF COUNTY ENGINEER REG. C.E. NO. 7860

151512
151512
151512

check 6-20-52 by [signature]



762075

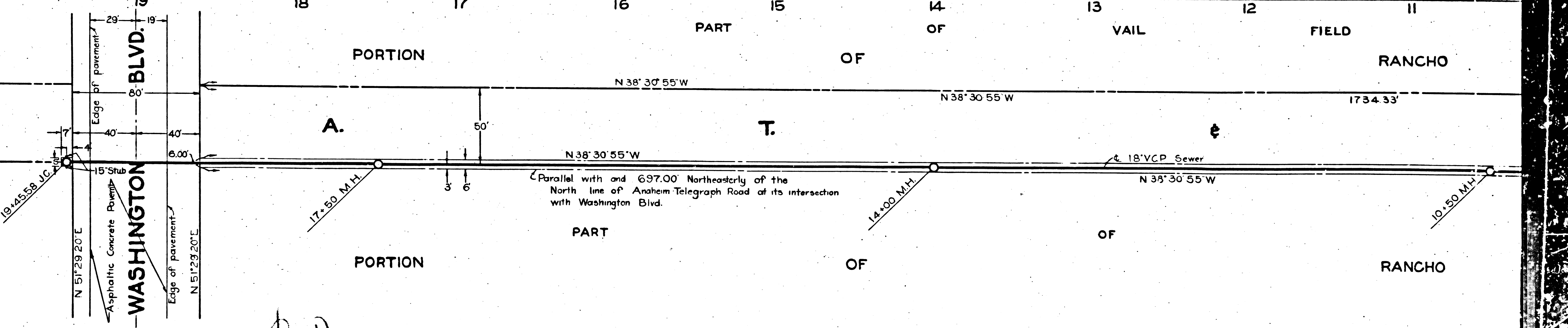
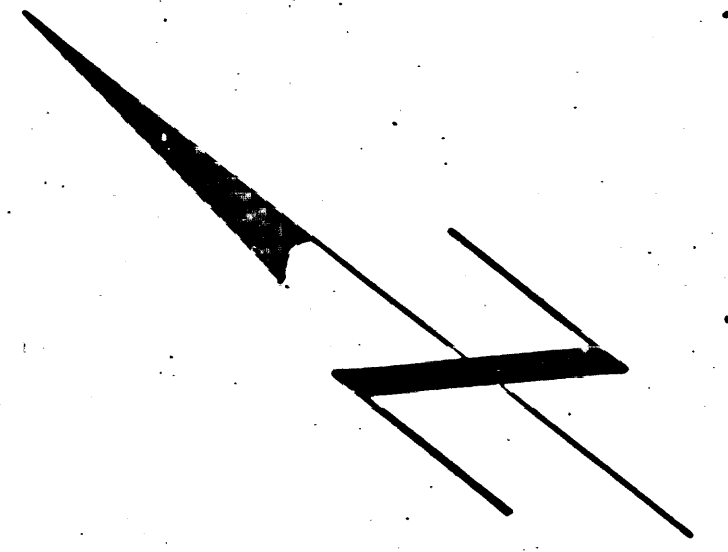
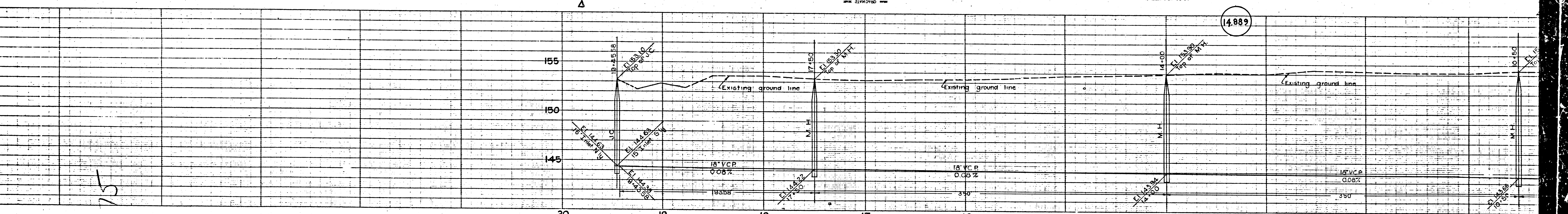
BC502B TN 415E

BY THE STATE ENGINE
DWAYNE G. BROWN, P.E.
NO. 21907
WWW.STATEENGINE.COM

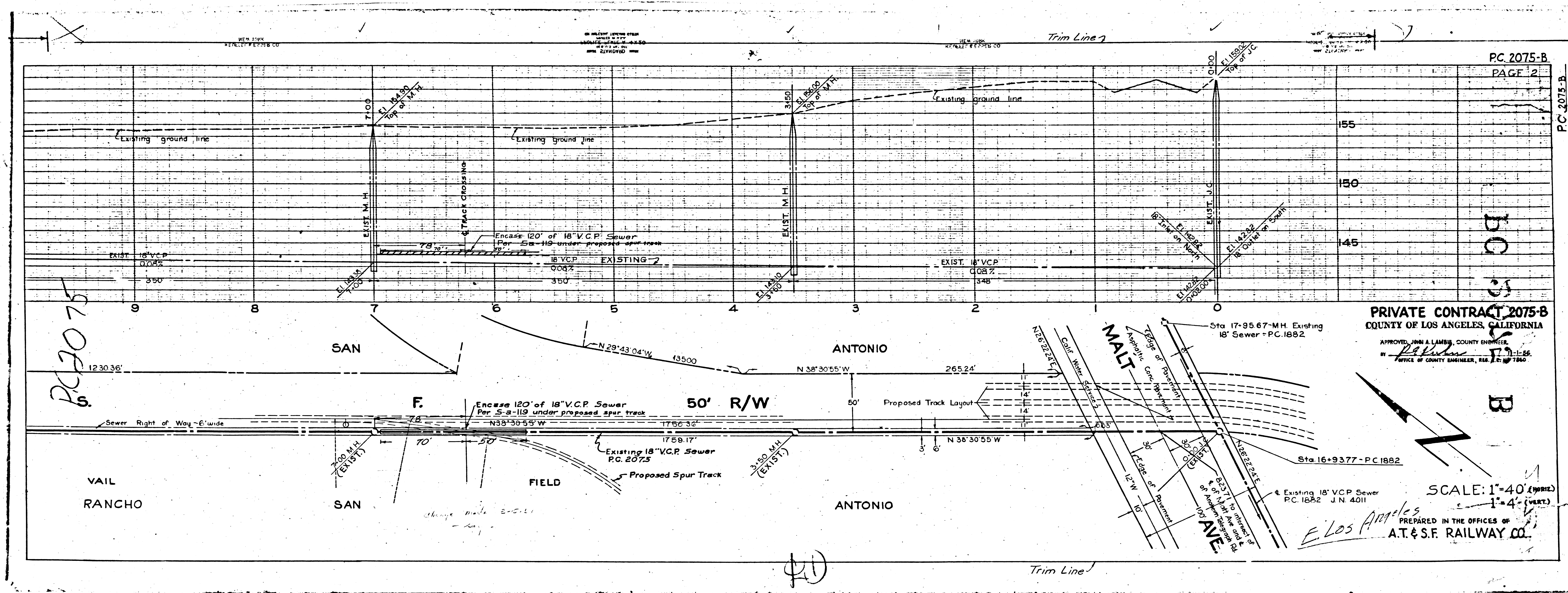
BY THE STATE ENGINE
DWAYNE G. BROWN, P.E.
NO. 21907
WWW.STATEENGINE.COM

BY THE STATE ENGINE
DWAYNE G. BROWN, P.E.
NO. 21907
WWW.STATEENGINE.COM

BY THE STATE ENGINE
DWAYNE G. BROWN, P.E.
NO. 21907
WWW.STATEENGINE.COM



②



PC 2075-B
6

PC 2075-B
PAGE 2

PC 2075-B

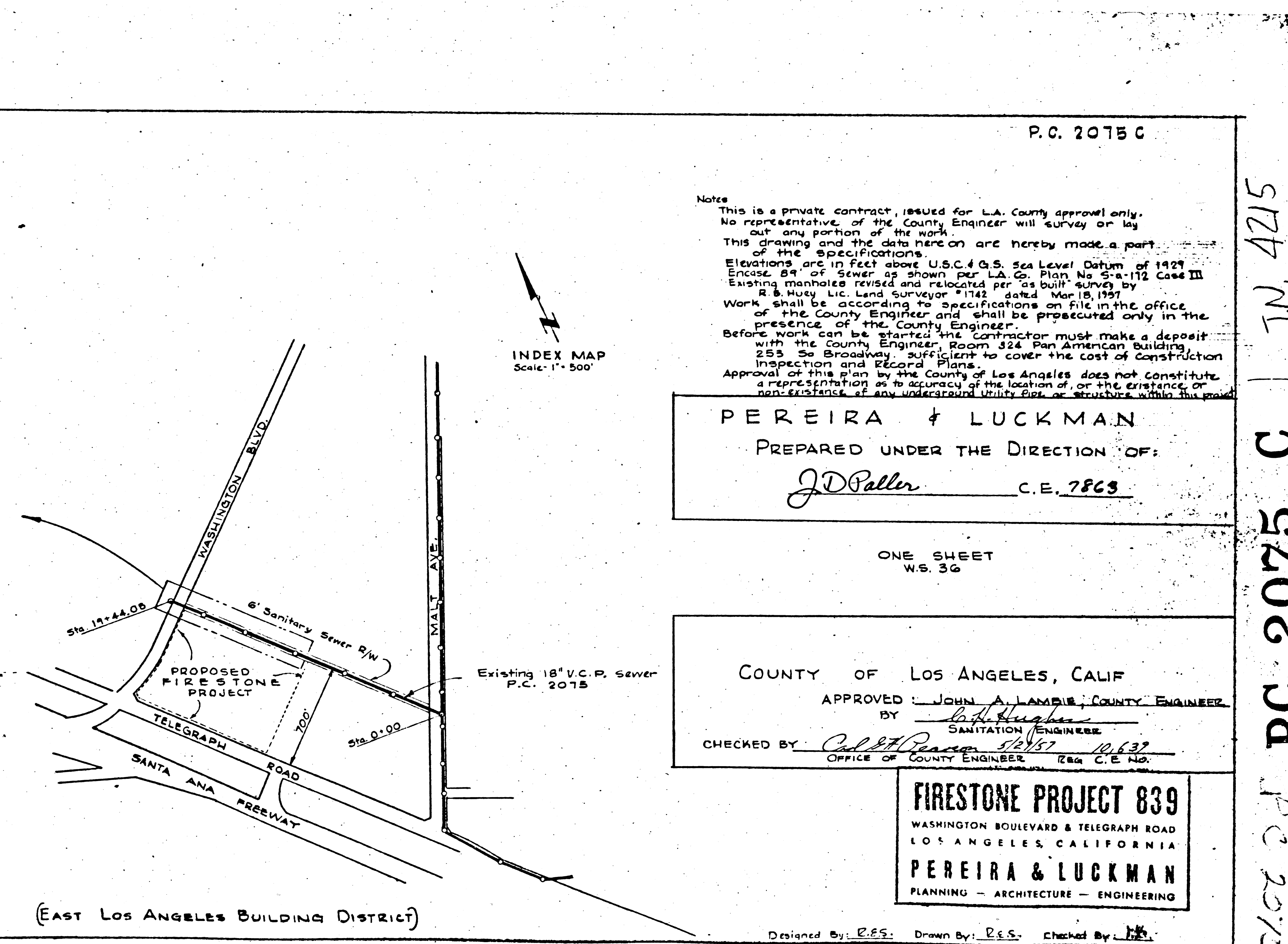
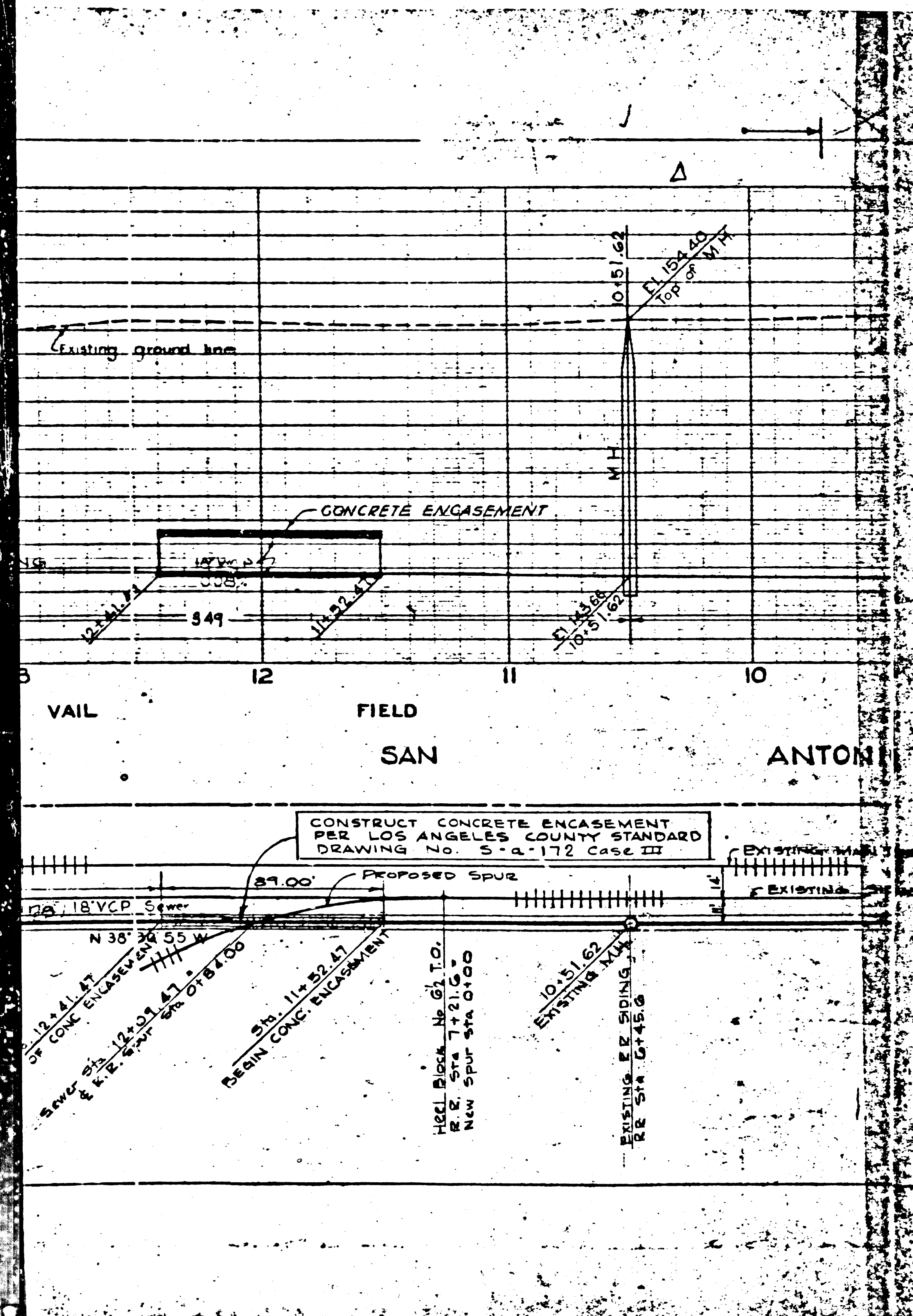
BO
S

PRIVATE CONTRACT 2075-B
COUNTY OF LOS ANGELES, CALIFORNIA
APPROVED: JOHN A. LAMBE, COUNTY ENGINEER
BY: *[Signature]* 1-1-55
OFFICE OF COUNTY ENGINEER, 814 E. F. ST. 1950

SCALE: 1"=40' (HORIZ.)
1"=4' (VERT.)

E. Los Angeles
PREPARED IN THE OFFICES OF
A.T. & S.F. RAILWAY CO.

40



Note
 This is a private contract, issued for L.A. County approval only. No representative of the County Engineer will survey or lay out any portion of the work.
 This drawing and the data hereon are hereby made a part of the specifications.
 Elevations are in feet above U.S.C. & G.S. Sea Level Datum of 1929.
 Encase 84\"/>

PEREIRA & LUCKMAN
 PREPARED UNDER THE DIRECTION OF:
J.D. Paller C.E. 7863

ONE SHEET
 W.S. 36

COUNTY OF LOS ANGELES, CALIF.
 APPROVED BY *John A. Lambie* COUNTY ENGINEER
 BY *P. H. Hughes* SANITATION ENGINEER
 CHECKED BY *Calvin P. Pinner* 10,637
 OFFICE OF COUNTY ENGINEER (26a) C.E. No.

FIRESTONE PROJECT 839
 WASHINGTON BOULEVARD & TELEGRAPH ROAD
 LOS ANGELES, CALIFORNIA
PEREIRA & LUCKMAN
 PLANNING - ARCHITECTURE - ENGINEERING

Designed By: *P.E.S.* Drawn By: *P.E.S.* Checked By: *L.H.S.*

P.C. 2075 C | J.N. 4215
 PC 2075 C
 P.C. 2075 C

Q2

