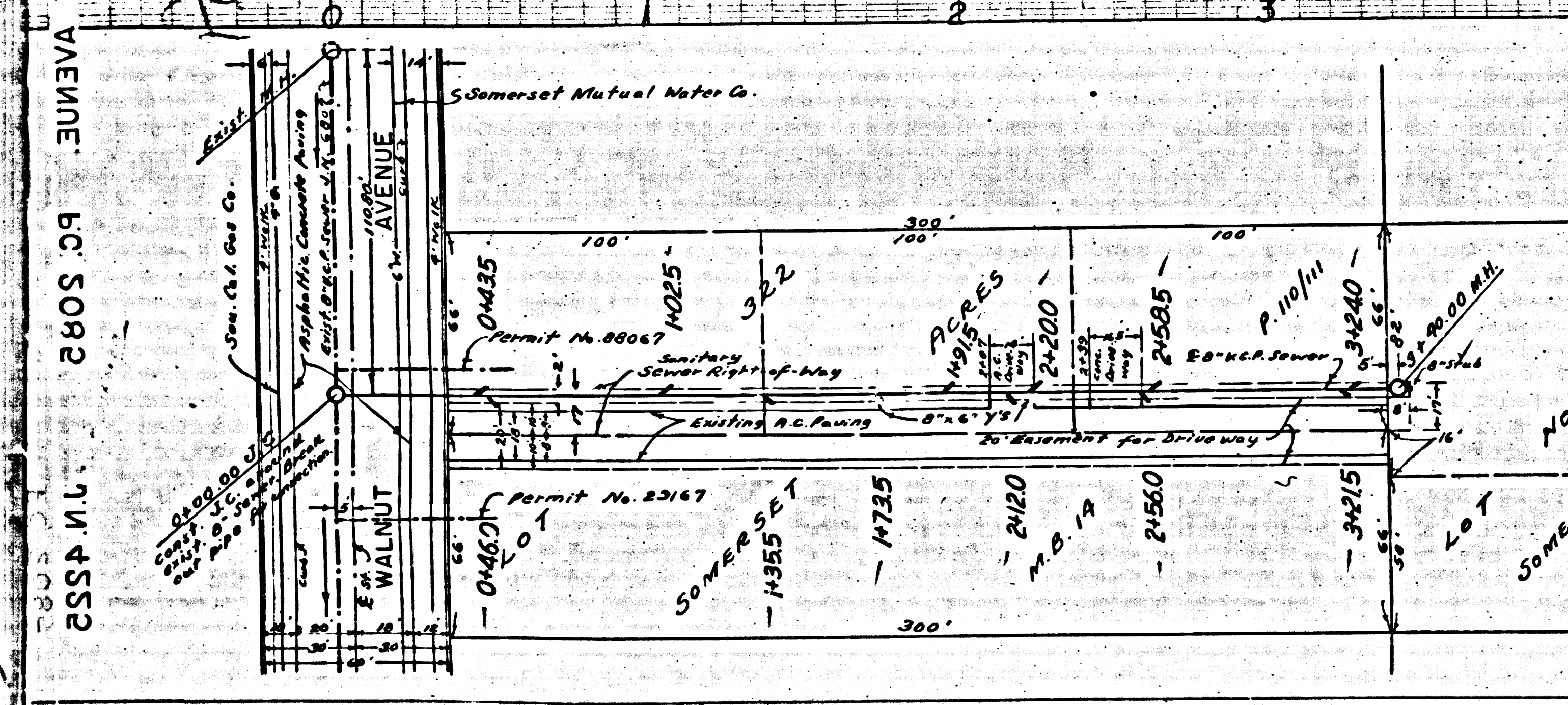
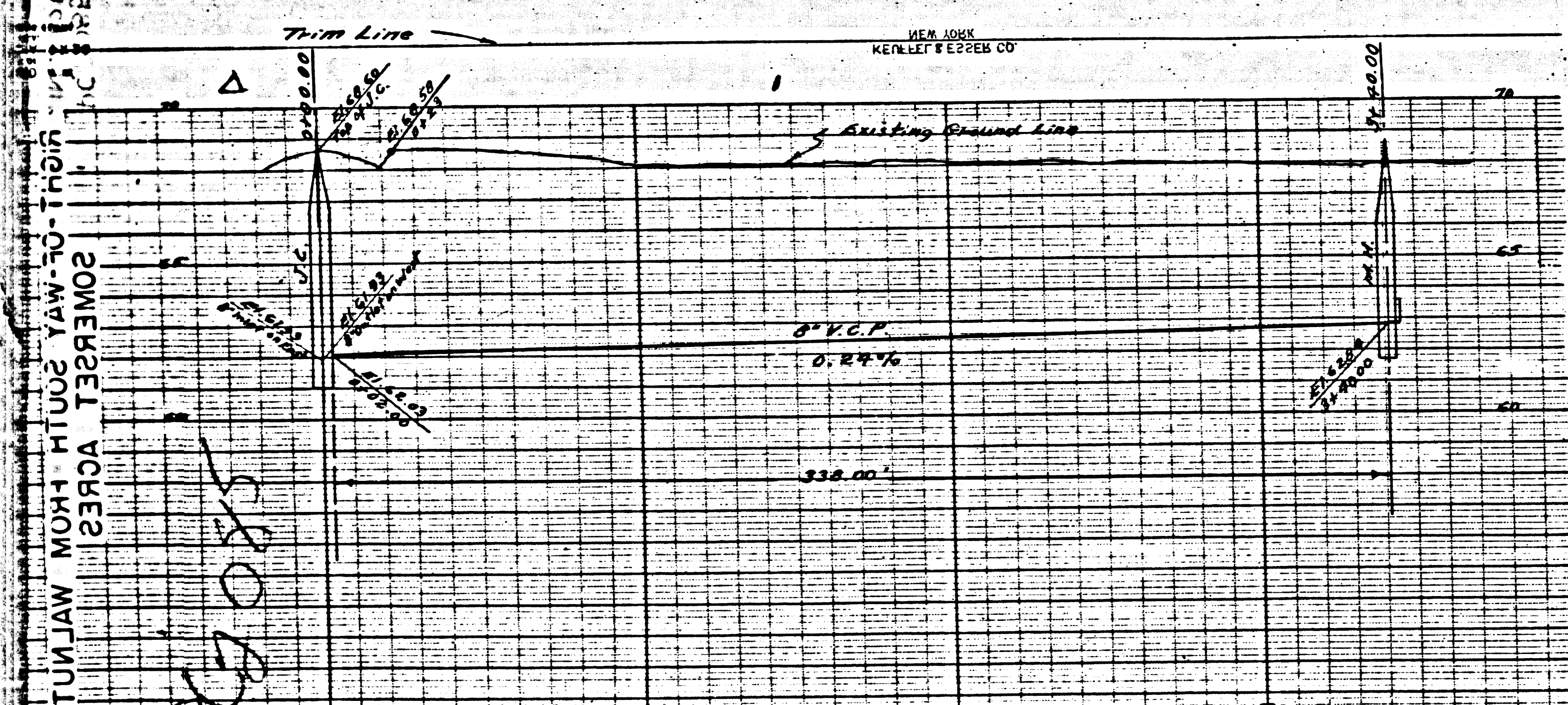


NEW YORK
KENNELL & ELDRED CO.



NEW YORK
KENNELL & ELDRED CO.

BELLFLOWER

BENCH MARK: L.B. 379 + 41 - ELEV. 68.738
 Bolt spike in West end of curb return at Southwest corner of Bixby and Walnut Avenues marked B-12.

USE STANDARD MANHOLE FRAMES AND COVERS
 1. USE STANDARD STRENGTH PIPE 12 IN. DIAMETER
 2. SURFACE ALL TRENCHES WITH 6 IN. SAND FOR A MINIMUM DEPTH OF 4 INCHES
 3. CONCRETE HOUSE CONNECTIONS TO EXISTING LINES TO BE MADE BELOW CURB GRADE
 4. MANHOLE COVERS SHALL BE CAST IRON STRUCTURES WITH POLYMER TILE INVERTS
 5. CONCRETE TOPS OF ALL MANHOLES SHALL BE CUT NOT LESS THAN 2 IN. DEPTH WITH CONCRETE AND PER SPACK SEC. 55.

NO REPRESENTATIVE OF THE COUNTY ENGINEER SHALL SURVEY OR LAY OUT ANY PORTION OF THIS WORK
 THE ENGINEER OR HIS AUTHORIZED REPRESENTATIVE SHALL FURNISH THE COUNTY ENGINEER WITH GRADE SHEETS AND REVISIONS OF ALL WORK CONSTRUCTION MAPS, PLANS, AND DETAILS FOR REVIEW AND APPROVAL. ALL WORK SHALL BE DONE IN ACCORDANCE WITH THE SPECIFICATIONS OF THE COUNTY ENGINEER. ANY CHANGES IN THE WORK SHALL BE MADE IN WRITING AND APPROVED BY THE COUNTY ENGINEER. NO CONSTRUCTION SHALL BE MADE IN THIS PLANS WITHOUT THE WRITTEN APPROVAL OF THE COUNTY ENGINEER.
 Install wire & tags per Spack's Sec. 48.
 Showers to be installed and set in concrete by Manufacturer of this plan per Spack's Sec. 54.
 Concrete pavement to be cut not less than 2 in depth with concrete and per Spack's Sec. 55.

NEW YORK
KENNELL & ELDRED CO.

BELLFLOWER

PROFILE ALIGNMENT AND GRADE OF SANITARY SEWERS TO BE CONSTRUCTED IN

SANITARY SEWER RIGHT-OF-WAY FROM WALNUT AVENUE TO A POINT 305 SOUTH IN SOMERSET ACRES, M.B. 18-110-111

PRIVATE CONTRACT No. 2085
W. & 33
SHEET 1 OF 1 SHEET
 MARCH 1952

PREPARED IN THE OFFICES OF
GLEN RODD, Registered Engineer
 Reg. C.E. No. 2093

FOR LEGEND
 THIS DRAWING AND THE DATA HEREON ARE HEREBY MADE A PART OF THE SPECIFICATIONS AND SHALL BE CONSIDERED AS SUCH.
 NO REPRESENTATIVE OF THE COUNTY ENGINEER SHALL SURVEY OR LAY OUT ANY PORTION OF THIS WORK.
 THE ENGINEER OR HIS AUTHORIZED REPRESENTATIVE SHALL FURNISH THE COUNTY ENGINEER WITH GRADE SHEETS AND REVISIONS OF ALL WORK CONSTRUCTION MAPS, PLANS, AND DETAILS FOR REVIEW AND APPROVAL. ALL WORK SHALL BE DONE IN ACCORDANCE WITH THE SPECIFICATIONS OF THE COUNTY ENGINEER. ANY CHANGES IN THE WORK SHALL BE MADE IN WRITING AND APPROVED BY THE COUNTY ENGINEER. NO CONSTRUCTION SHALL BE MADE IN THIS PLANS WITHOUT THE WRITTEN APPROVAL OF THE COUNTY ENGINEER.

INDEX MAP
 Scale: 1" = 600'
 P.C. 2085
 J.N. 4225

NEW YORK
KENNELL & ELDRED CO.

BELLFLOWER

PROFILE ALIGNMENT AND GRADE OF SANITARY SEWERS TO BE CONSTRUCTED IN

SANITARY SEWER RIGHT-OF-WAY FROM WALNUT AVENUE TO A POINT 305 SOUTH IN SOMERSET ACRES, M.B. 18-110-111

PRIVATE CONTRACT No. 2085
W. & 33
SHEET 1 OF 1 SHEET
 MARCH 1952

PREPARED IN THE OFFICES OF
GLEN RODD, Registered Engineer
 Reg. C.E. No. 2093

FOR LEGEND
 THIS DRAWING AND THE DATA HEREON ARE HEREBY MADE A PART OF THE SPECIFICATIONS AND SHALL BE CONSIDERED AS SUCH.
 NO REPRESENTATIVE OF THE COUNTY ENGINEER SHALL SURVEY OR LAY OUT ANY PORTION OF THIS WORK.
 THE ENGINEER OR HIS AUTHORIZED REPRESENTATIVE SHALL FURNISH THE COUNTY ENGINEER WITH GRADE SHEETS AND REVISIONS OF ALL WORK CONSTRUCTION MAPS, PLANS, AND DETAILS FOR REVIEW AND APPROVAL. ALL WORK SHALL BE DONE IN ACCORDANCE WITH THE SPECIFICATIONS OF THE COUNTY ENGINEER. ANY CHANGES IN THE WORK SHALL BE MADE IN WRITING AND APPROVED BY THE COUNTY ENGINEER. NO CONSTRUCTION SHALL BE MADE IN THIS PLANS WITHOUT THE WRITTEN APPROVAL OF THE COUNTY ENGINEER.

INDEX MAP
 Scale: 1" = 600'
 P.C. 2085
 J.N. 4225

BSSA 511 2805-07 JUN 27 1952 BSSA 2085 (10) 2805-07 JUN 27 1952