

WHITTIER

15,134

A.M. SY 1684. Elevation 158.27
 1/4 Br. Nail 1/4 W of S.C. P. of N.W. Cor.
 Bradwell Ave. & Washington Blvd.

PROFILE ALIGNMENT AND GRADE OF
SANITARY SEWERS
 TO BE CONSTRUCTED IN
BRADWELL AVENUE
 BETWEEN WOODHUE ST. & WADDELL ST.
SHADYSIDE AVENUE
 BETWEEN WOODHUE ST. & LINDENVALE RD.
 LINDENVALE ROAD
 BETWEEN BRADWELL AVE. & SHADYSIDE AVE.
 TRACT NO. 15423

PRIVATE CONTRACT No. 2101
 S.S. 36
 SHEET 1 OF 2 SHEETS

PREPARED IN THE OFFICES OF
KARL F. TUTTLE
 ENGINEERING CO., INC.

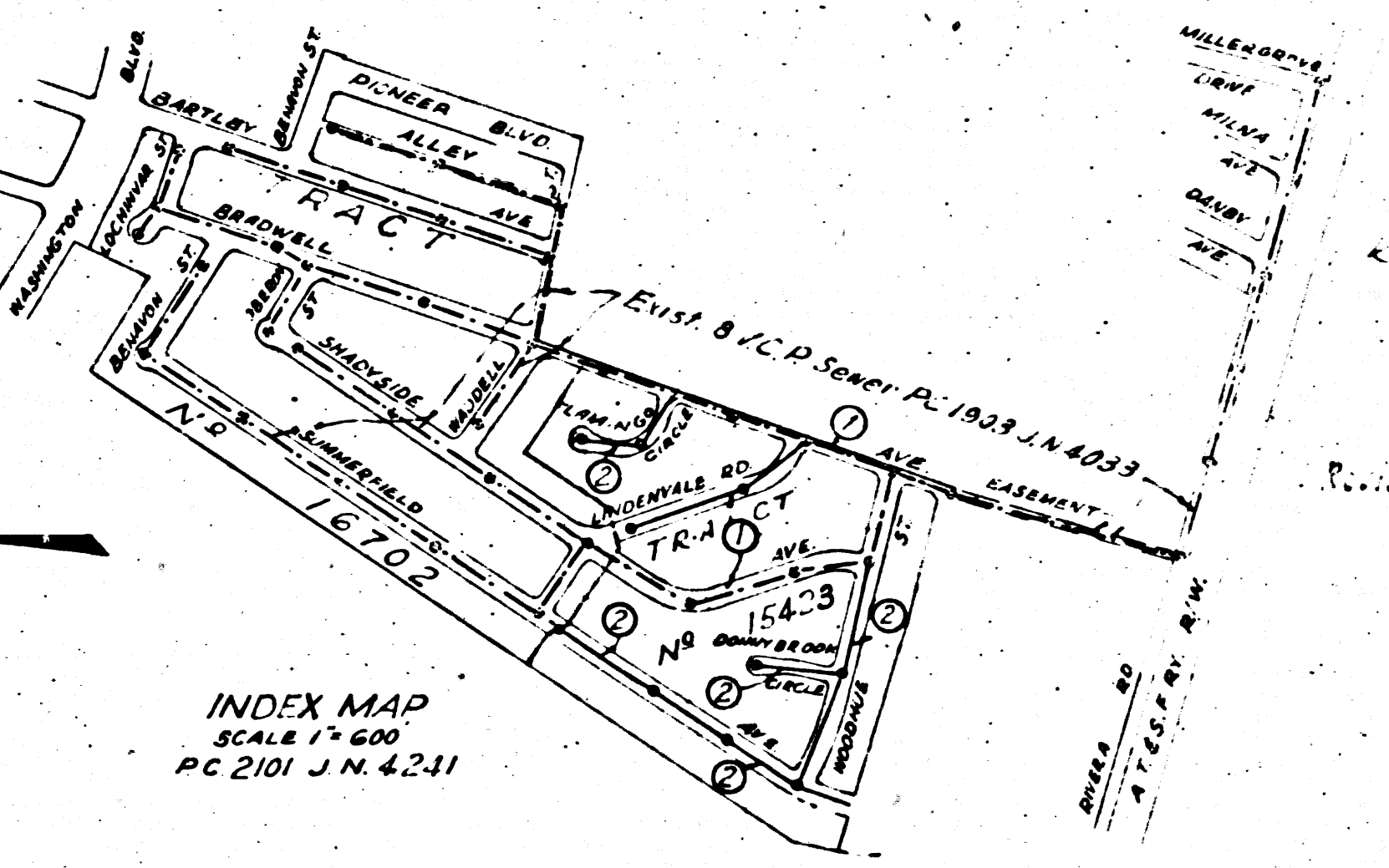
By *Edward S. Kuhn*
 RE 3023

PROPOSED SEWER LINE WITH JOINT COMPARED BY
 THE ENGINEER WITH THE CITY ENGINEER'S OFFICE
 AND THE COUNTY ENGINEER'S OFFICE. ALL
 DIMENSIONS AND ELEVATIONS ARE AS SHOWN
 UNLESS OTHERWISE NOTED. DECEMBER, 1960.
 (HARD COPY FOR RECORD - per Specs. Sec. 4B)

REVISION: *Richard S. Kuhn* 7/30/51
 CIVILS C. COUNTY ENGINEER, R.L.M. 7860

REVISION: *Richard S. Kuhn* 7-51
 CIVILS C. COUNTY ENGINEER, S.S. NO. 7860

(COUNTY OF LOS ANGELES) ENGINEER
 WILLIAM J. FAY, COUNTY ENGINEER
 BY *W. J. Fay*
 CIVILS C. COUNTY ENGINEER
 BY *W. J. Fay*
 CIVILS C. COUNTY ENGINEER
 BY *Richard S. Kuhn* 4-7-52
 CIVILS C. COUNTY ENGINEER, S.S. NO. 7860



INDEX MAP
 SCALE 1"=60'
 PC 2101 J.N. 4241

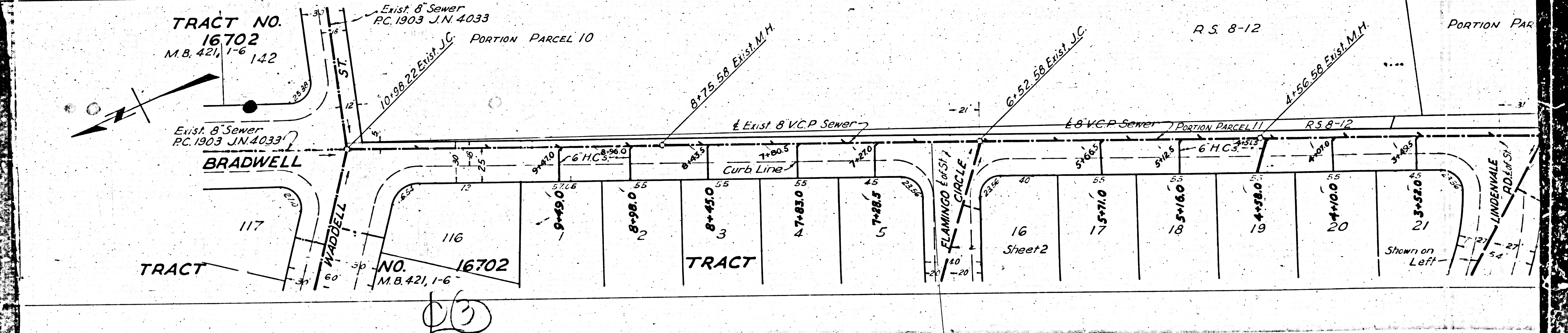
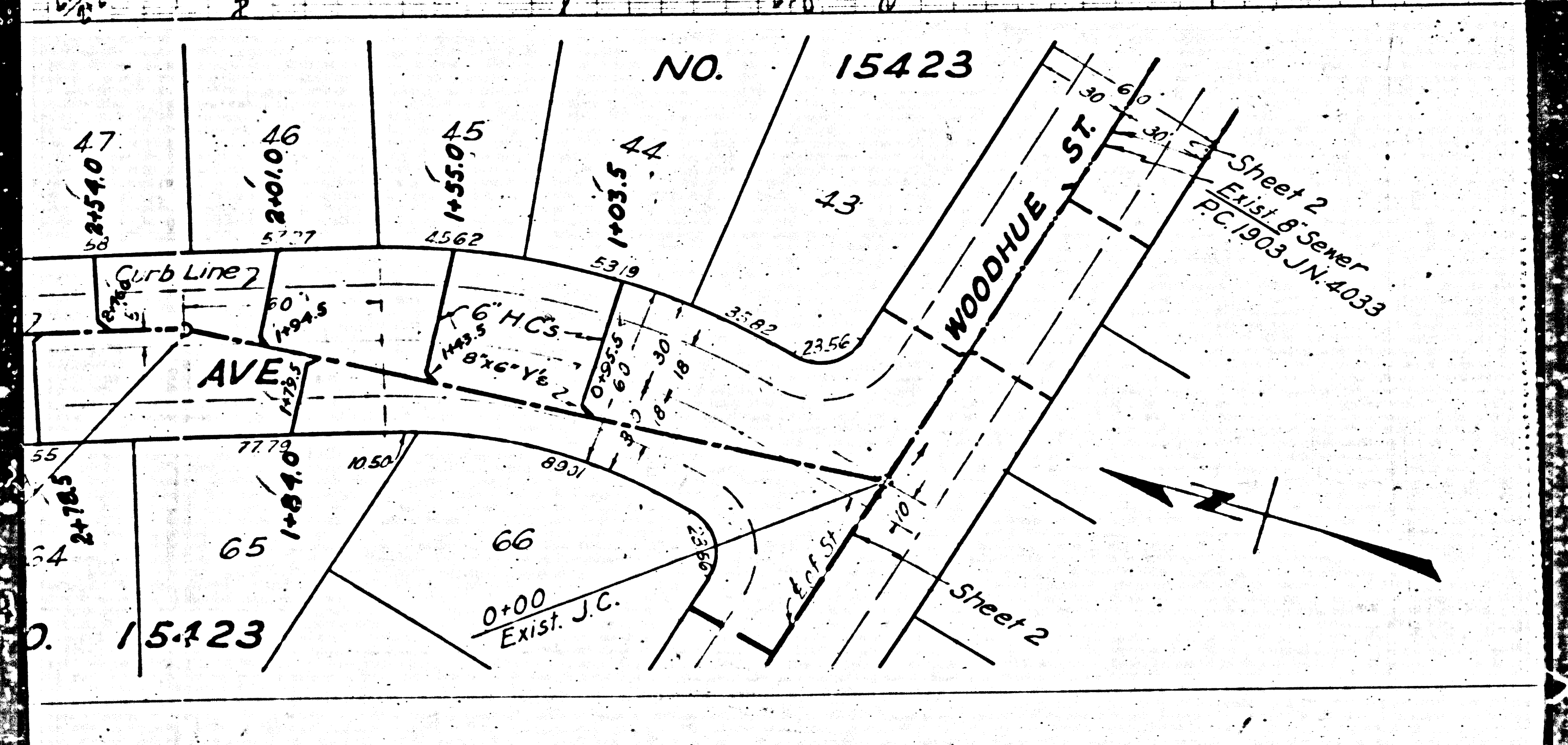
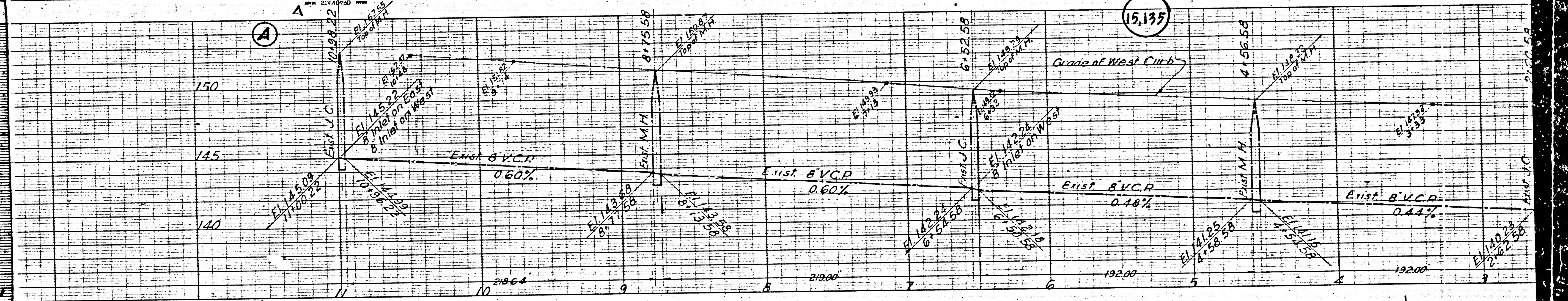
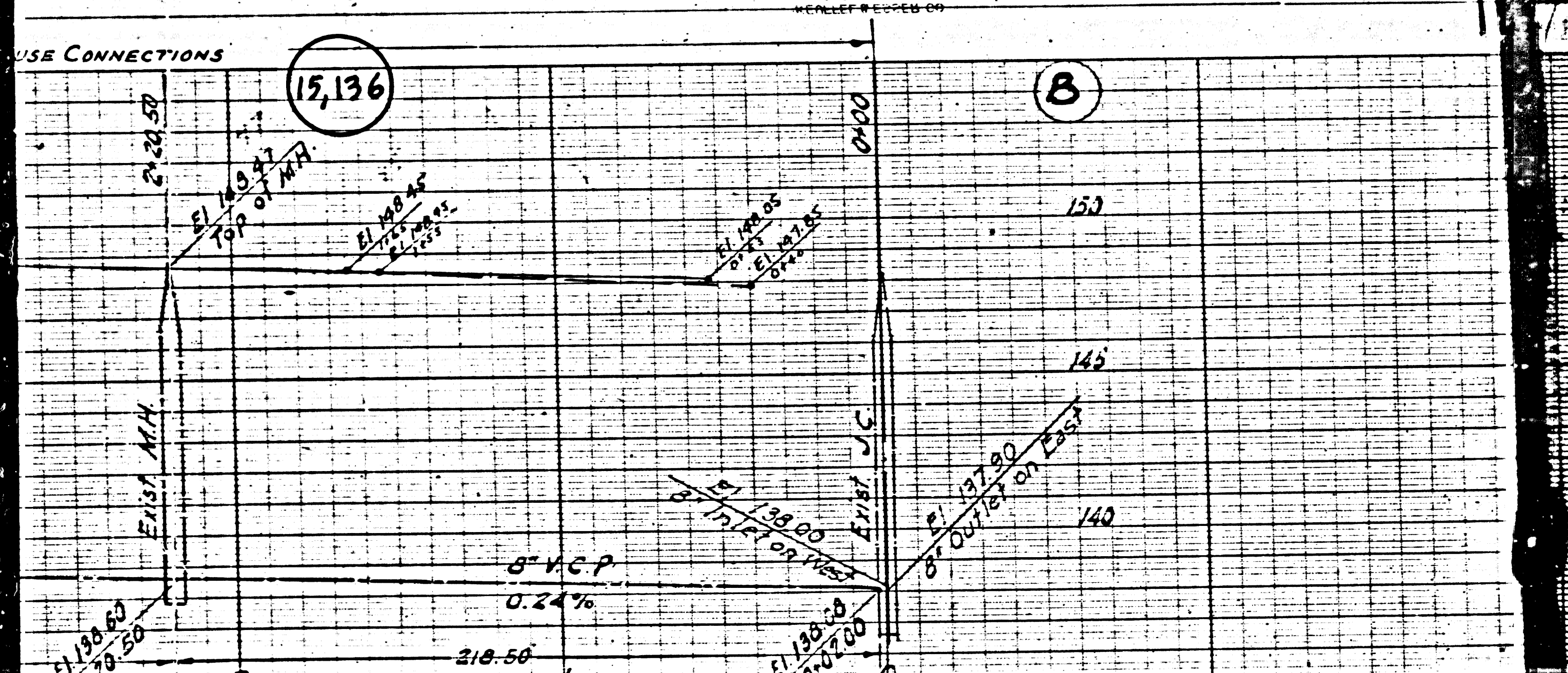
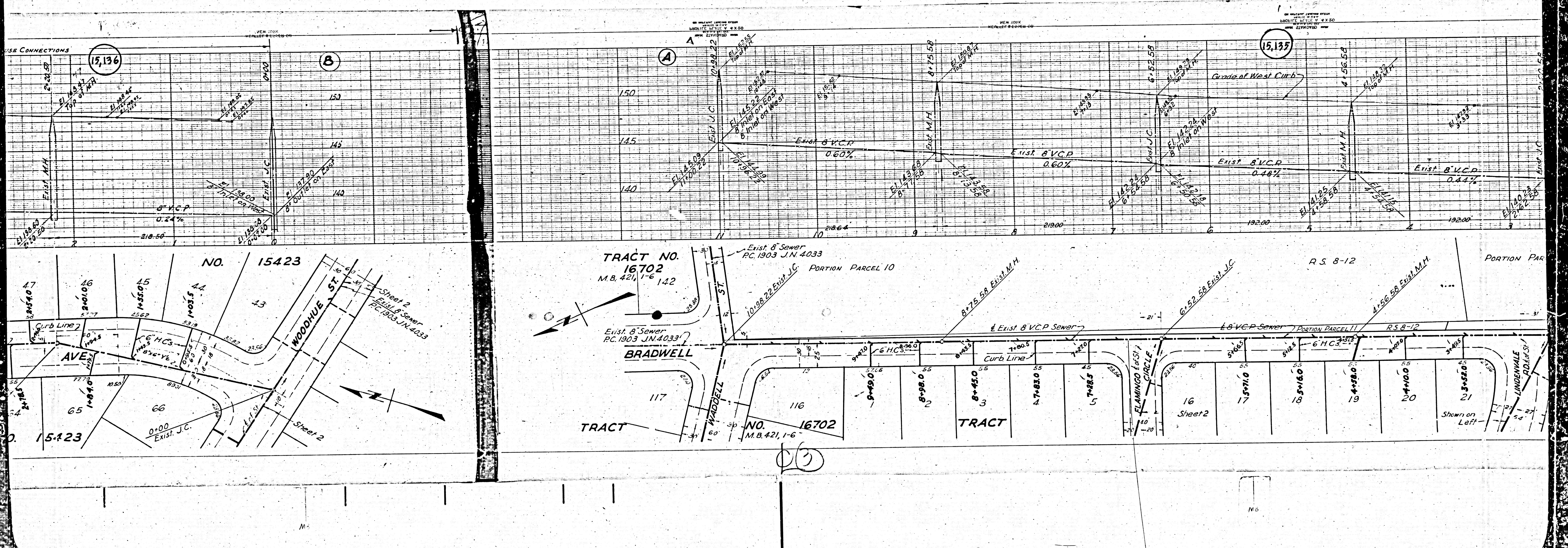
129
 Sheet 2
 Exist 8" Sewer
 PC. 1903 J.N. 4033

PORTION PARCEL 15

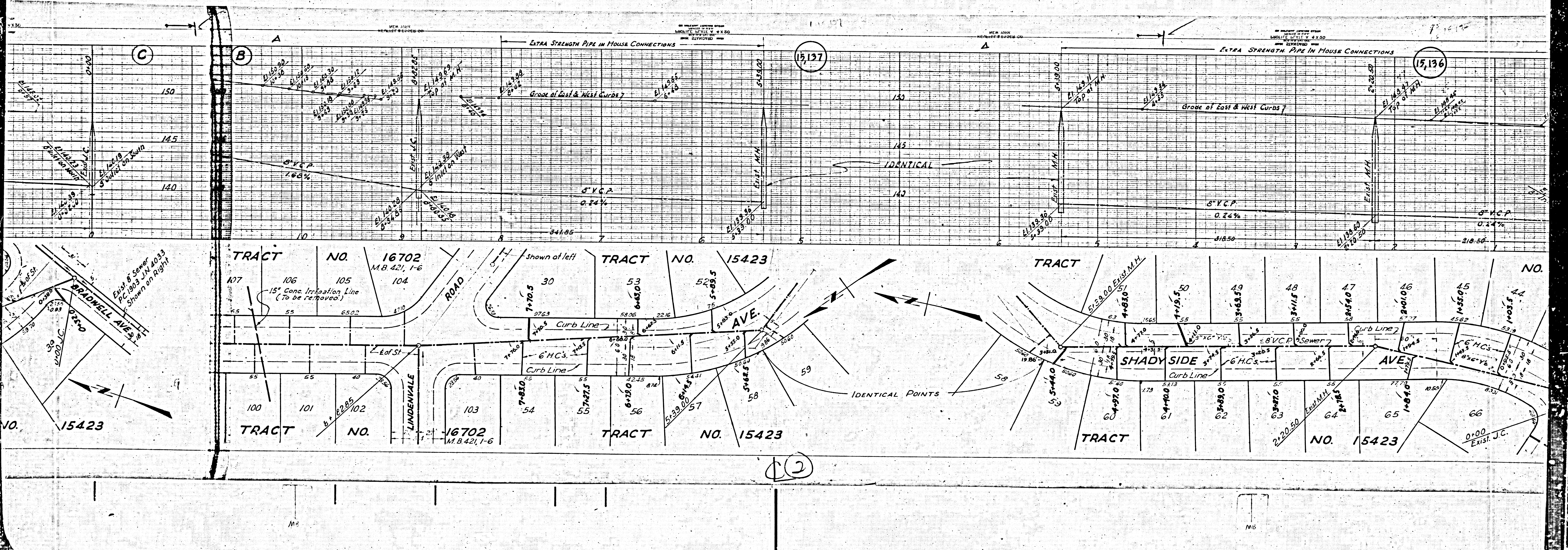
PORTION PARCEL 16

NO. 15423

TRACT NO. 15423
 BRADWELL AVE. - SHADYSIDE AVE. - LINDENVALE RD.
 SHEET 1 OF 2 SHEETS
 SHEET NO. 15423



(3)



(C)

(B)

(15,137)

(15,136)

TRACT NO. 16702

TRACT NO. 15423

TRACT NO. 15423

TRACT NO. 15423

TRACT NO. 15423

TRACT NO. 16702

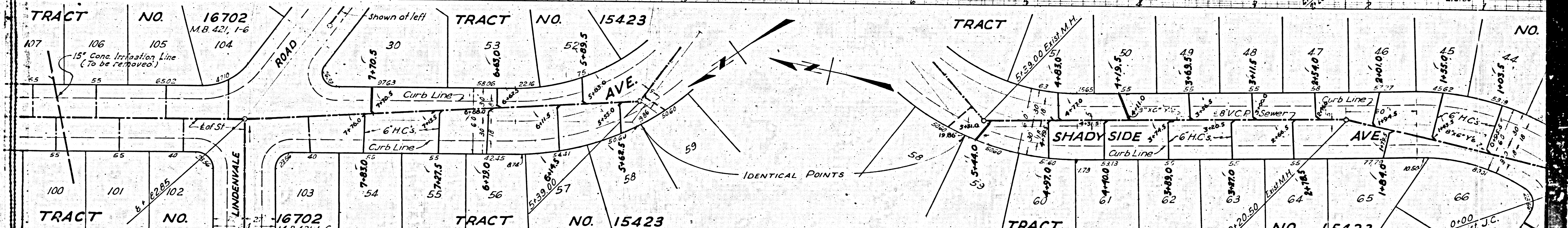
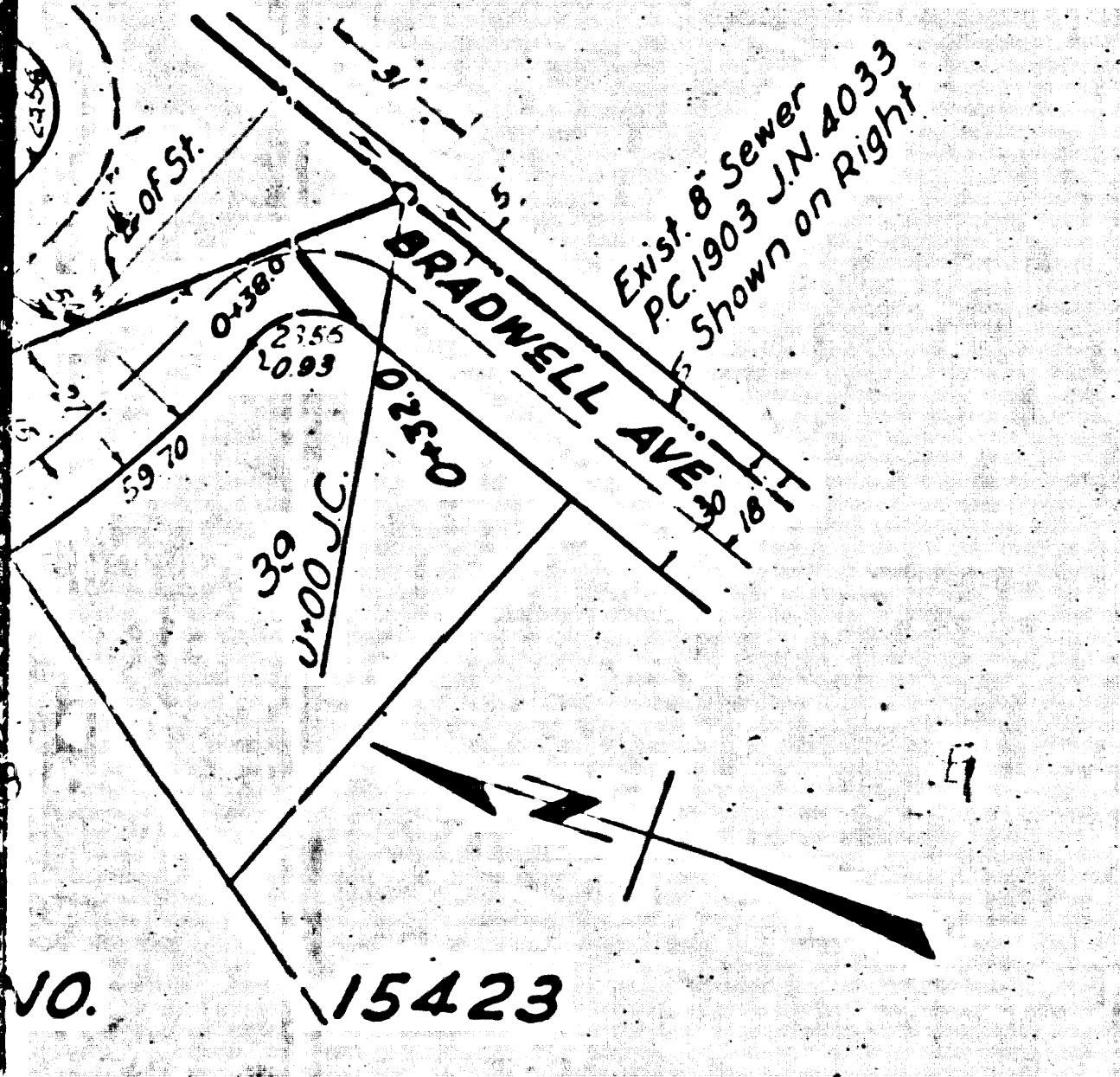
TRACT NO. 15423

TRACT NO. 15423

TRACT NO. 15423

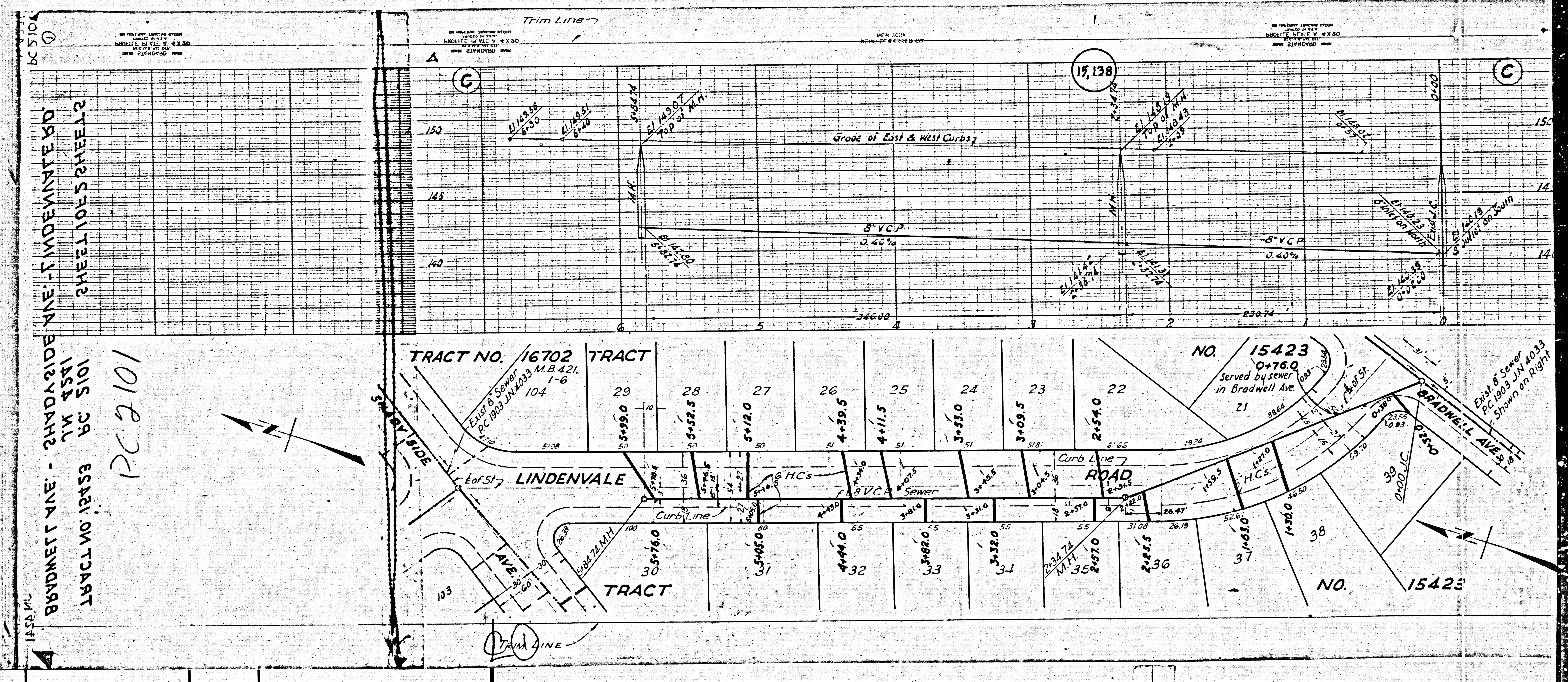
TRACT NO. 15423

(12)



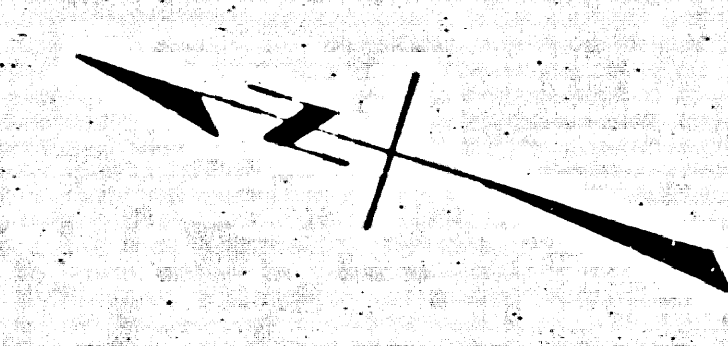
M2

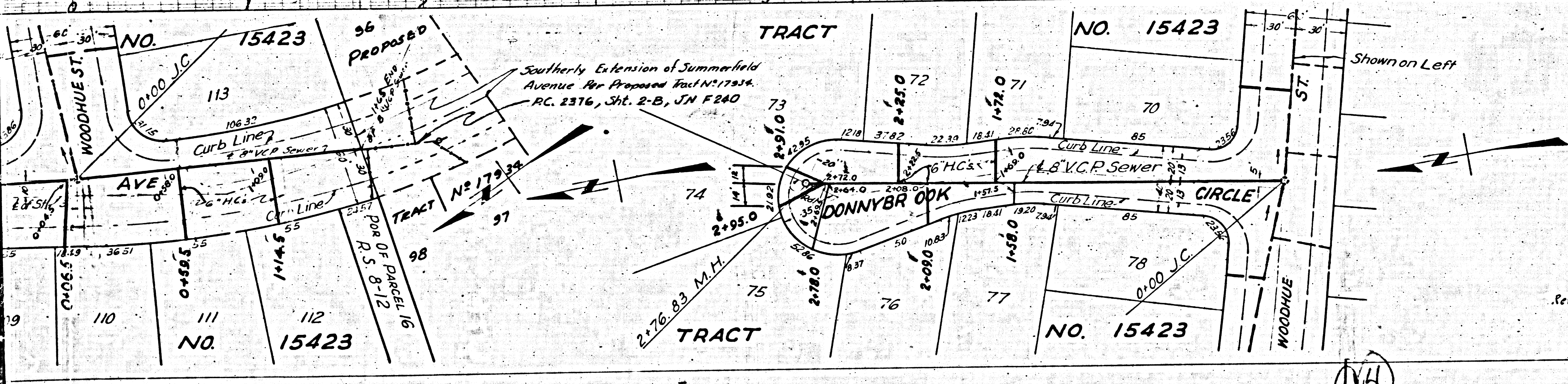
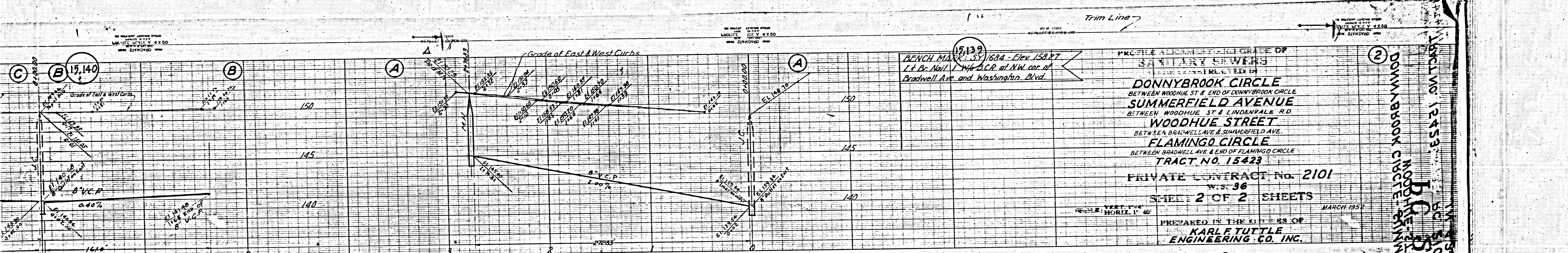
M5



BRADWELL AVE - 24' SIDE
 TRACT NO. 16702
 SHEET 10'S SHEET 2

PC 2101





BENCH MARK: ST. 1604 - Elev. 152.27
 I. & B. Nail 1 1/4\"/>

PRIVATE CONTRACT No. 2101
 W.S. 36
 SHEET 2 OF 2 SHEETS
 PREPARED IN THE OFFICE OF
 KARL TUTTLE
 ENGINEERING CO. INC.

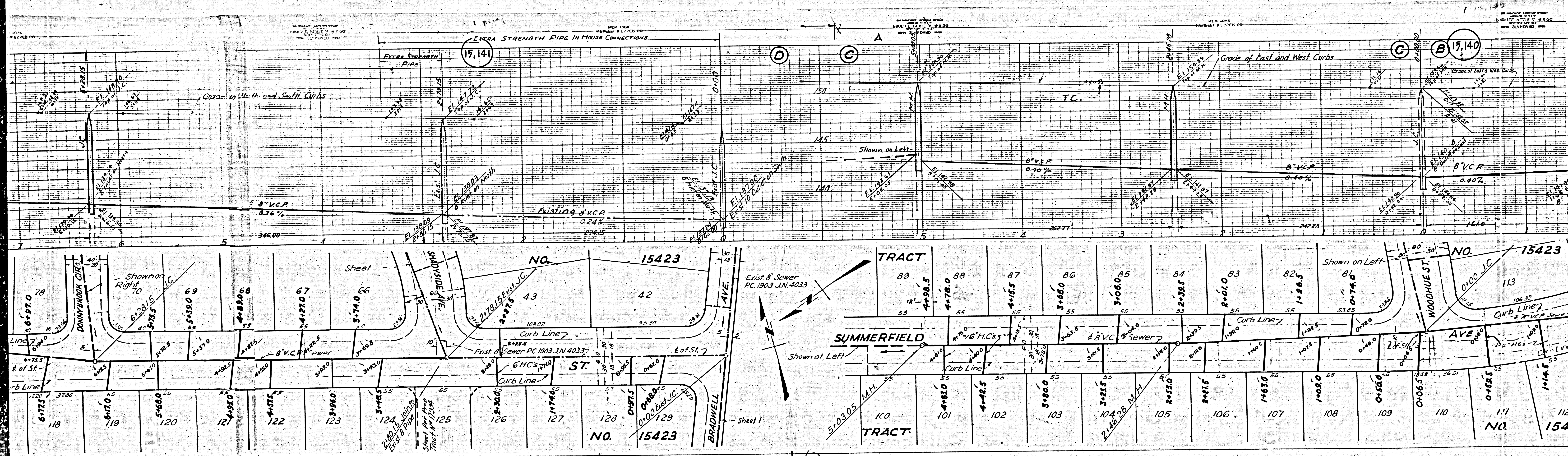
Edward D. Lamer
 R.E. 3023
 FOR CONSTRUCTION NOTES
 SEE SHEET 1

Revision Approved *Richard E. Kuban* 7/10/52
 OFFICE OF COUNTY ENGINEER R.E. NO. 7860

Revision Approved *Richard E. Kuban* 5-0-52
 OFFICE OF COUNTY ENGINEER R.E. NO. 7860

COUNTY OF LOS ANGELES, CALIFORNIA
 WILLIAM J. HAYES, COUNTY ENGINEER
 APPROVED BY *Richard E. Kuban* Office Engineer
 APPROVED BY *A.M. Rawn* Chief Deputy
 APPROVED BY *W. B. Burt* Office Engineer
 CHECKED BY *Richard E. Kuban* 1-7-52
 OFFICE OF COUNTY ENGINEER R.E. NO. 7860

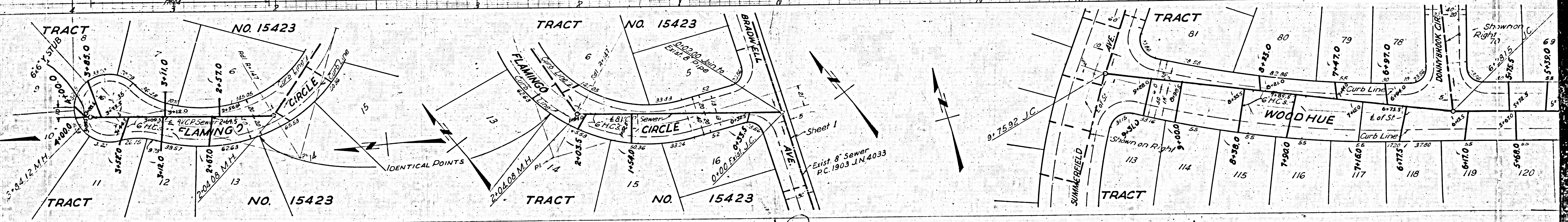
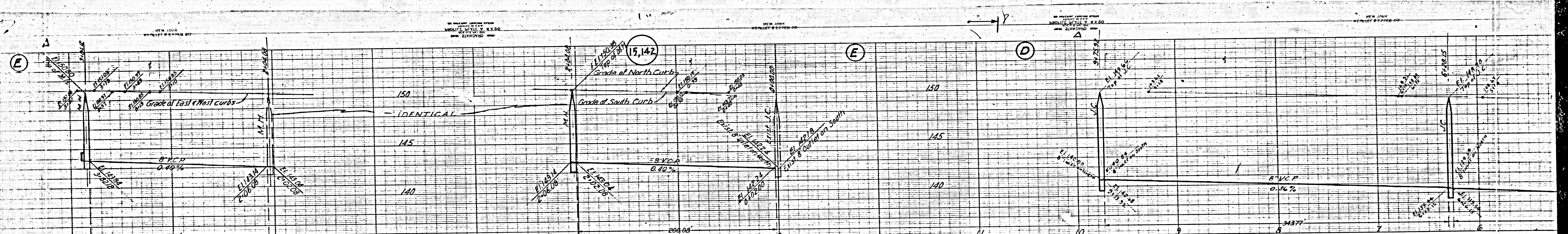
SEP 4 1952
 SHEETS OF SHEETS
 SHEET NO. 1
 SHEETS OF SHEETS
 SHEET NO. 2



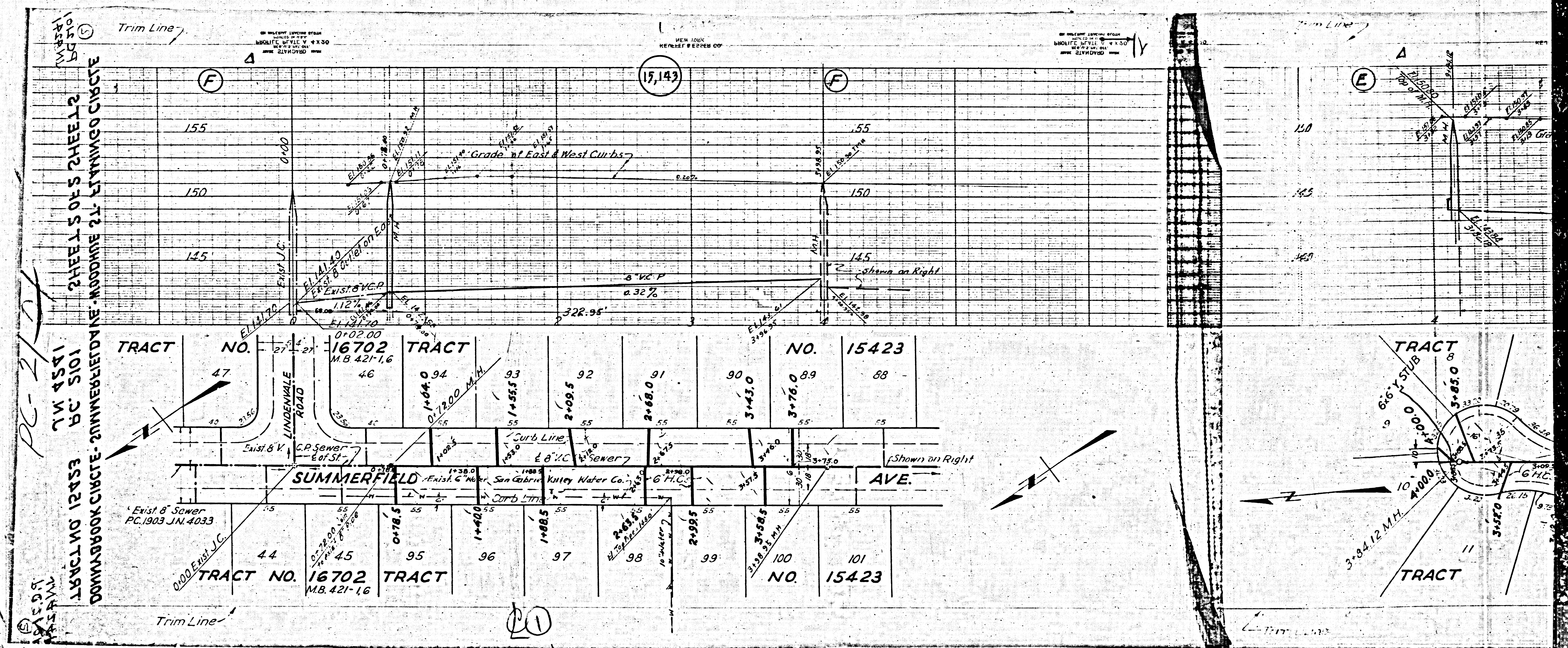
(13)

M5

M6



12



PC-21-D
 TRACT NO. 12453
 DOMINGUEZ CIRCLE - SUMMERFIELD AVE. - MOONBEE ST. - LINDENVALE CIRCLE
 7M 4591
 BC 5101
 1953

20

M5