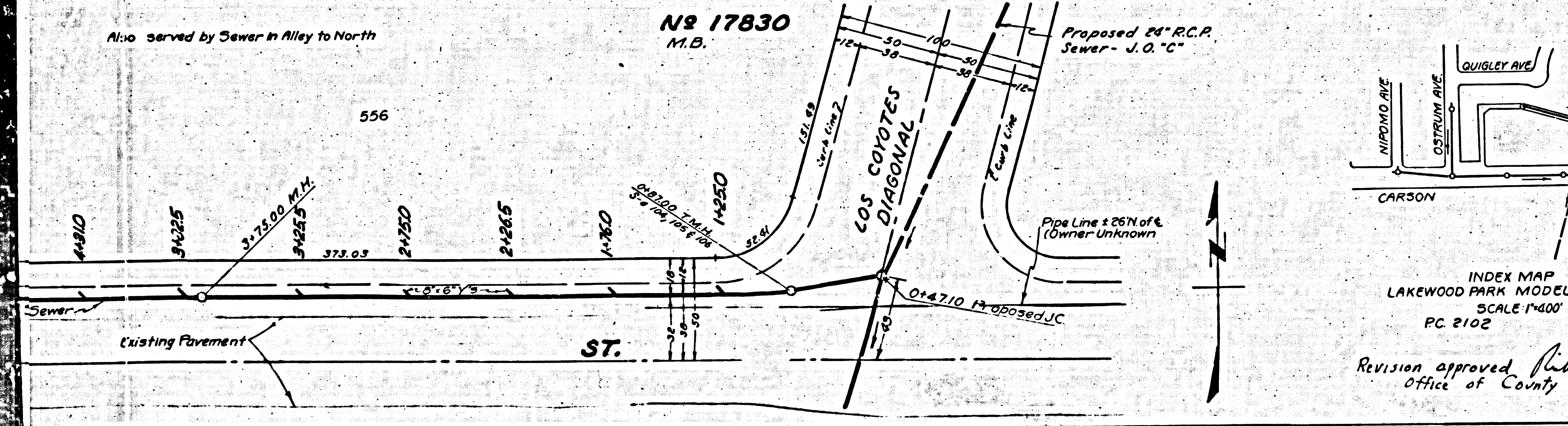


BELFLOWER

NOTE:
 NO REPRESENTATIVE OF THE COUNTY ENGINEER WILL SURVEY OR
 THE COUNTY ENGINEER OR HIS AUTHORIZED REPRESENTATIVE SHALL FURNISH
 THE COUNTY ENGINEER WITH GRADE SHEETS AND STATIONS FOR
 ALL HOUSE CONNECTIONS AND TRUNK LINES AND SHALL PROVIDE
 STAKES FOR THEM AT THEIR PROPER LOCATIONS WITH STATIONING
 PLAINLY MARKED. ANY CHANGE OF LOCATION SHALL BE REQUESTED
 IN WRITING BY THE OWNER OR HIS REPRESENTATIVE.
 NO REVISIONS SHALL BE MADE IN THESE PLANS WITHOUT APPROVAL
 ALL OR THE COUNTY ENGINEER.
 1. USE STANDARD MANHOLE FRAMES AND COVERS, 36" DIA.
 2. USE STANDARD STRENGTH REINFORCED CONCRETE
 3. USE STEEL TIE BARS FOR ALL REINFORCED CONCRETE JOINTS.
 4. RESURFACE ALL TRENCH WITHIN PAVED AREA TO MEET L.A.
 COUNTY ROAD DEPT. REQUIREMENTS.
 5. ENCASE FOUR FEET OF SEWER AT POINTS OF INTERFERENCE WITH
 POLES 5'-4" DIA.
 6. HOUSE CONNECTIONS TO BE CONSTRUCTED WITH INVERT AT
 PROPERTY LINE 4' FEET BELOW CURB GRADE.
 7. ALL STRUCTURES SHALL BE BRICK SEWER STRUCTURES, 3'-10"
 8. PROPOSED STAKES FOR THE PROPERTY LINES OR PROPERTY LINES
 PROPOSED AT RIGHT ANGLES TO THE SEWER LINE AT THE
 CENTER LINE OF EACH MANHOLE.
 9. STOPPERS TO BE INSTALLED WITH JOINT (COMPUND BY MANUFACTURER,
 AT ALL MANHOLE DECKS, 36" DIA.
 10. CONCRETE PAVEMENT TO BE CUT NOT LESS THAN 2" DEPTH WITH
 CONCRETE SAW SPECS. SEC. 65.
 11. CONSTRUCTION IN STATE HIGHWAY SHALL CONFORM WITH STATE
 HIGHWAY DEPT. PERMITS.
 12. INSTALL WIRE TAGS PER SPECS SEC. 48.

15,723 PROFILE, ALIGNMENT AND GRADE OF
SANITARY SEWERS
 TO BE CONSTRUCTED IN
CARSON STREET
 BETWEEN LOS COYOTES DIAGONAL AND NIPOMO AVE
OSTRUM AVENUE
 BETWEEN CARSON ST AND 340' NORTHERLY
15' ALLEY NORTH OF CARSON ST.
 BETWEEN LOS COYOTES DIAGONAL AND 385' WESTERLY
LAKEWOOD PARK
MODEL HOMES
 PRIVATE CONTRACT NO. 2102
 W. S. 31
 SHEET 1 OF 7 SHEETS
 SCALE VERT. 1" = 4'
 HOR. 1" = 40' MARCH 1952
 PREPARED IN THE OFFICES OF
ENGINEERING SERVICE CORPORATION
 BY *J. G. Jordan*
 S.E.C. & NO. 2264



INDEX MAP
 LAKEWOOD PARK MODEL HOMES
 SCALE 1"=400'
 PC 2102 JUN 1952

Revision approved *Richard E. Kahan* 3-15-52
 Office of County Engineer, Los Angeles

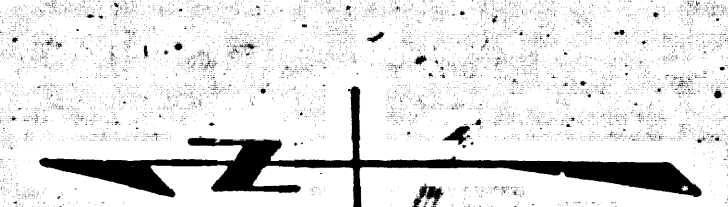
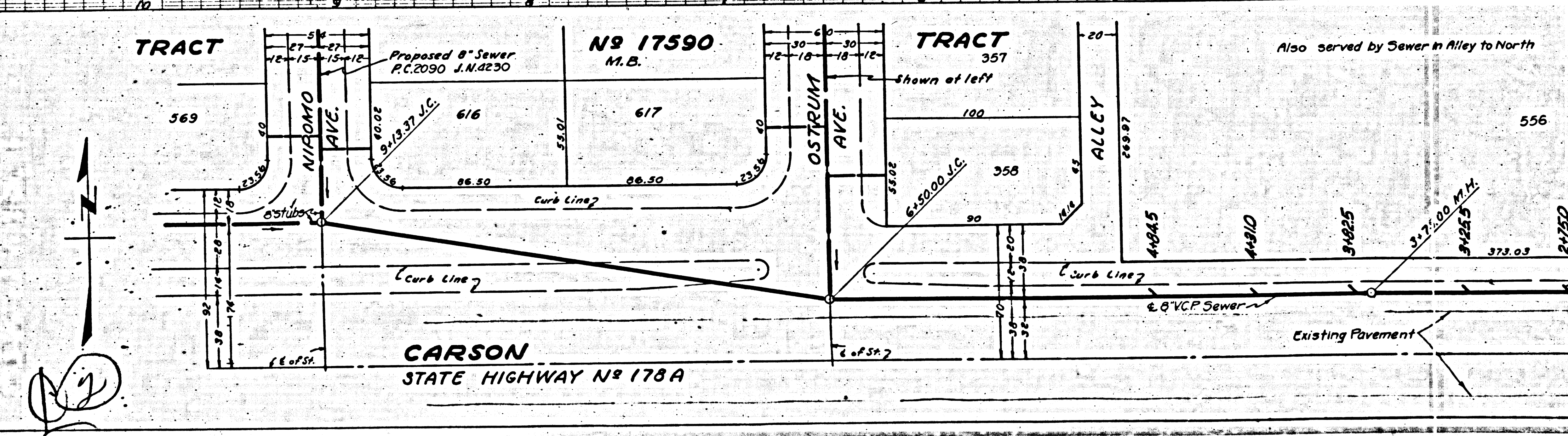
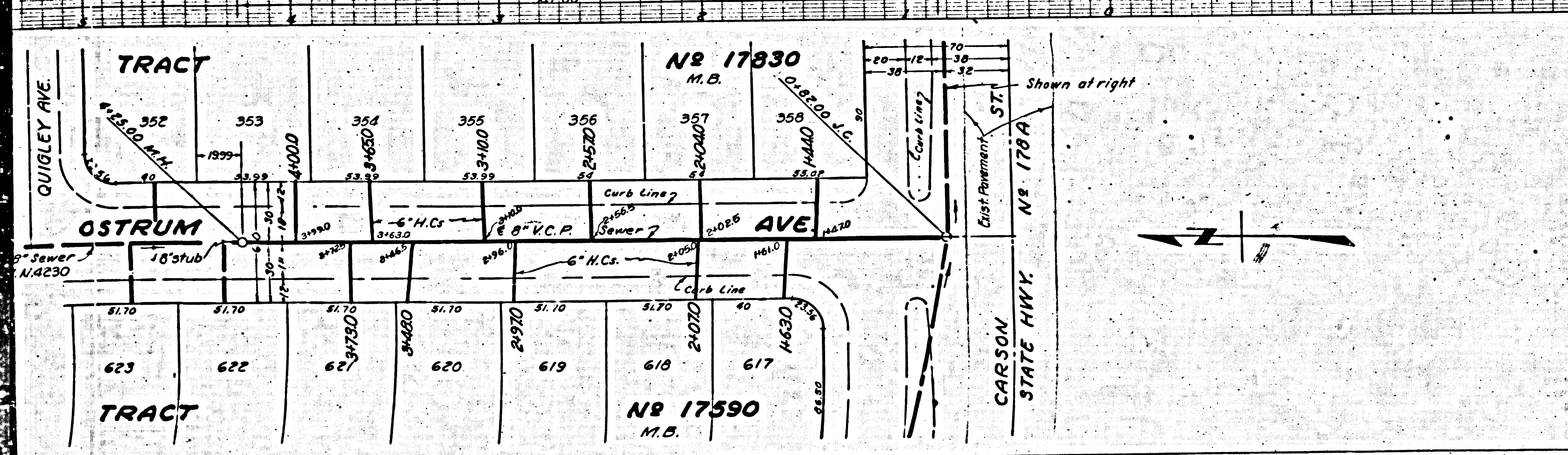
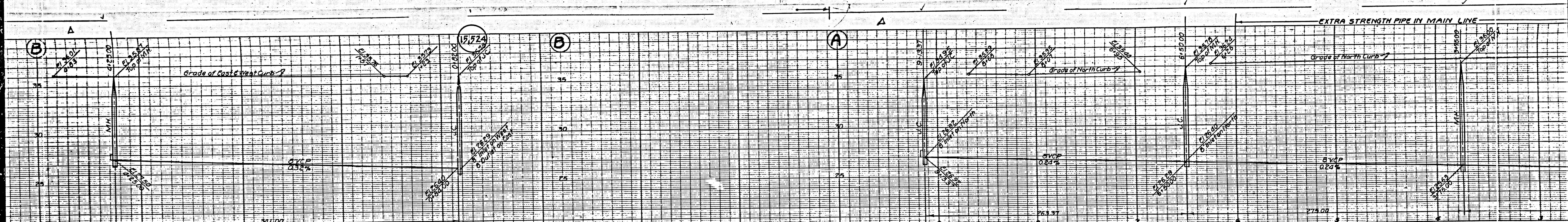
ENGINEERING SERVICE CORPORATION					
1127 W WASHINGTON BLVD.					
LOS ANGELES 15 CALIF. PR. 7281					
REVISIONS					
Changed location of proposed	4-23-52	TRACED BY <i>W.P. G.D.</i>			
trunk sewer-M.H.		DESIG'D BY <i>K.S.</i>			
		CK'D BY			
		SUBMITTED			
SUB STRUCTURES CK'D					
W. O. NO.	DWG NO.	DATE	SCALE	L. B.	P. B.
5977-69		MARCH 52	VERT. 1"=4' HORIZ. 1"=40'		

FOR LEGEND
 SEE PLAN NO. 54-44

NOTE:
 GRADES TO WHICH THIS IMPROVEMENT IS TO BE CONSTRUCTED ARE SHOWN ON PLANS AND PROFILES.
 GRADE POINTS FOR TOP OF CURB, CENTER LINE OF STREETS, OR CENTER LINE OF ALLEY ARE SHOWN BY
 CIRCLES ON PROFILES. AT ALL POINTS BETWEEN DESIGNATED POINTS THE GRADE SHALL BE ESTABLISHED
 SO AS TO CONFORM TO A STRAIGHT LINE DRAWN BETWEEN SAID DESIGNATED POINTS.
 ELEVATIONS ARE IN FEET ABOVE '71, S. G. S. DATUM OF MEAN SEA LEVEL.
 THIS DRAWING AND THE DATA HEREON ARE FOR THE USE OF THE SPECIFICATIONS.
 APPROVAL OF THIS PLAN BY THE COUNTY OF LOS ANGELES DOES NOT CONSTITUTE A REPRESENTATION
 AS TO THE ACCURACY OF THE LOCATION OR OF THE EXISTENCE OR NON-EXISTENCE OF ANY UNDER-
 GROUND UTILITY, PIPE, OR STRUCTURE WITHIN THE LIMITS OF THIS PROJECT. THIS NOTE APPLIES TO ALL SHEETS.
 COUNTY OF LOS ANGELES, CALIFORNIA

APPROVED BY *W. J. Fox* COUNTY ENGINEER
 APPROVED BY *A. M. Rawlin* CHIEF ENGINEER OF COUNTY SANITATION (DISTRICT NO. 3)
 CHECKED BY *Richard E. Kahan* 3-15-52 OFFICE ENGINEER
 S.E.C. & NO. 7840

Checked 12-4-52 *W. K. Loran*



12

