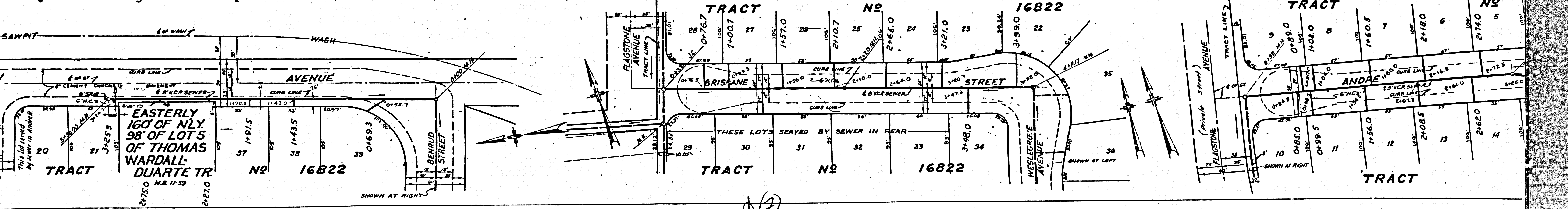
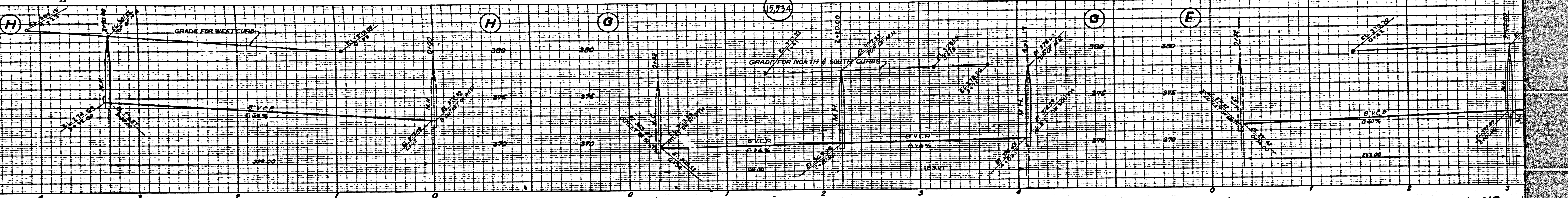
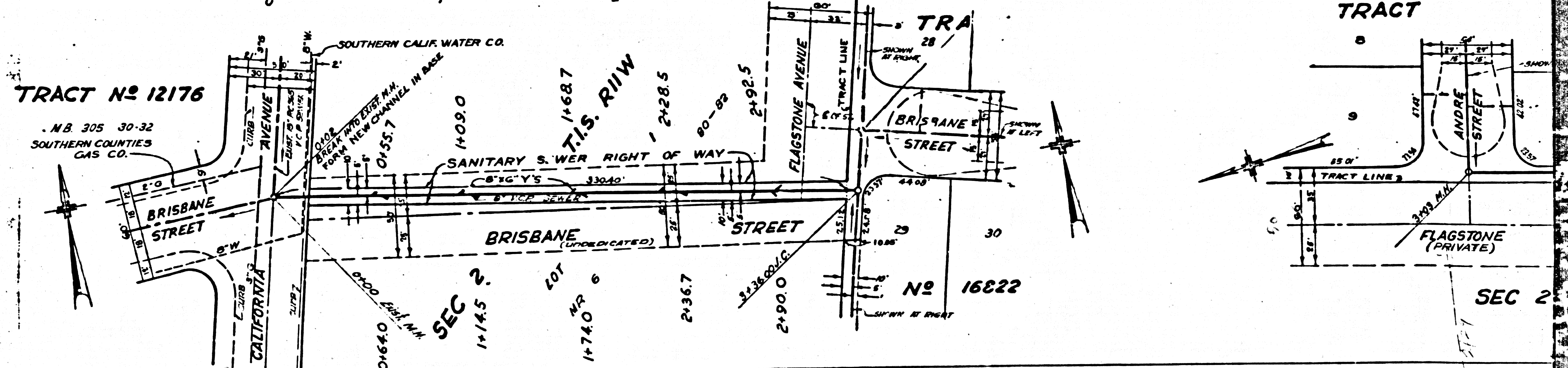
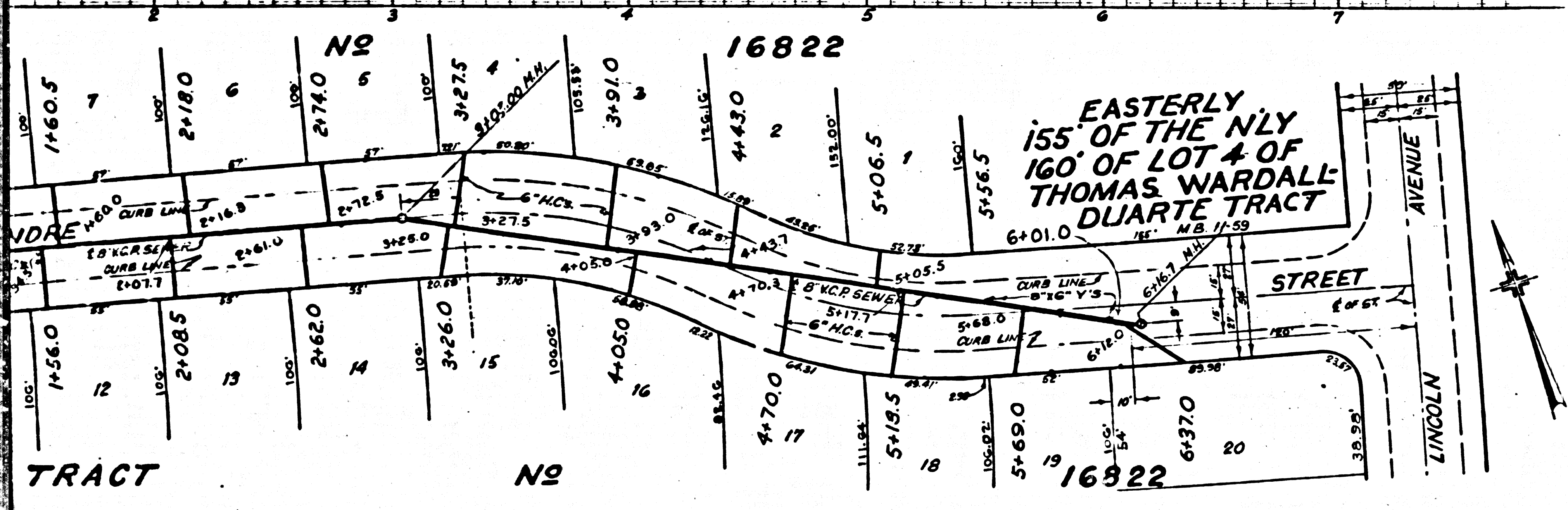
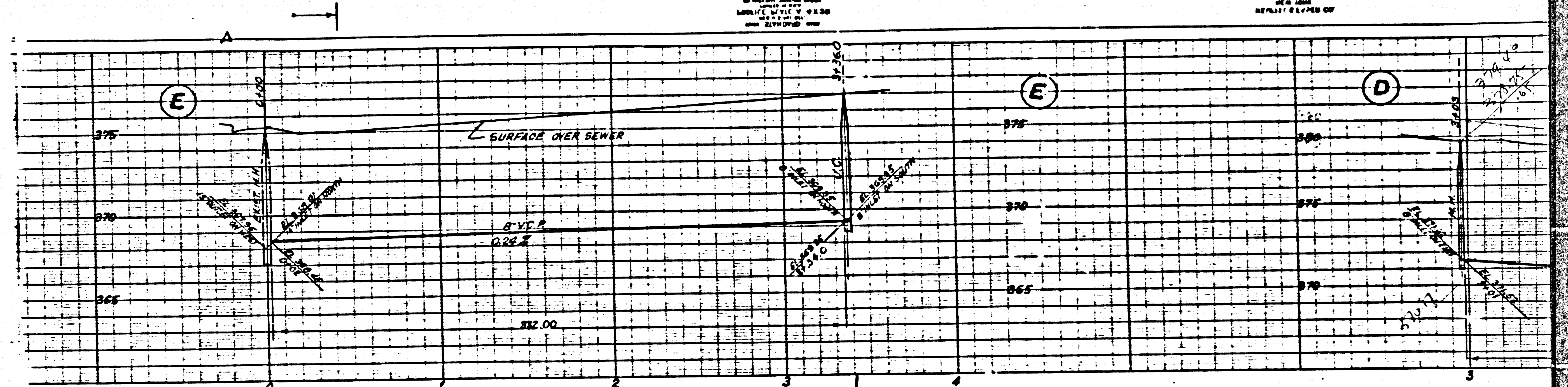
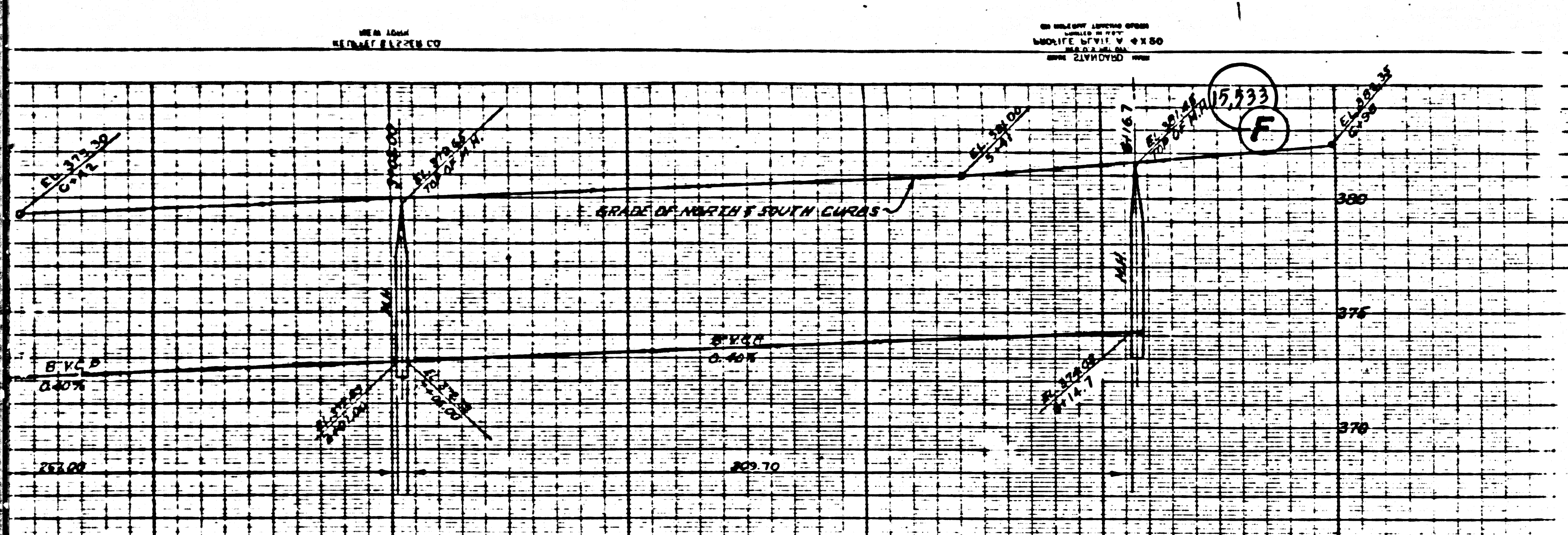


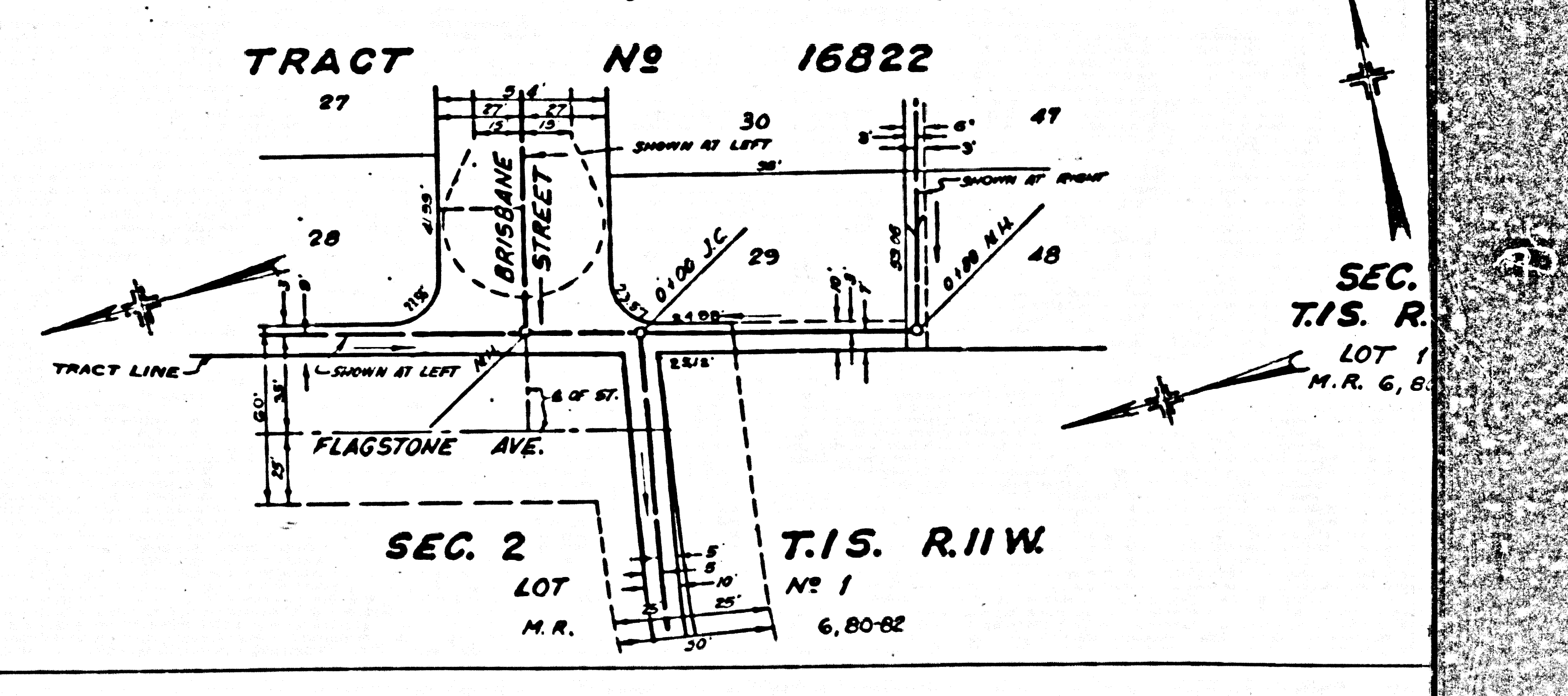
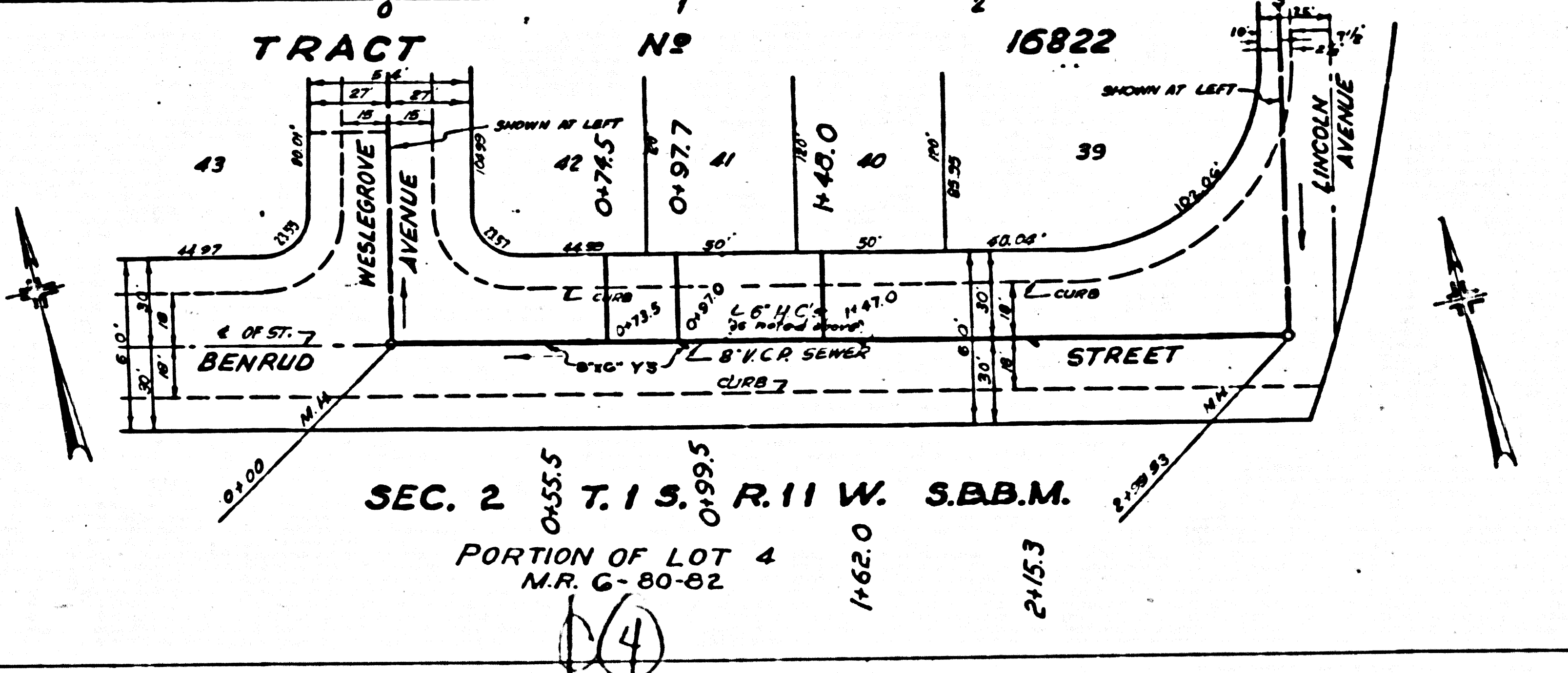
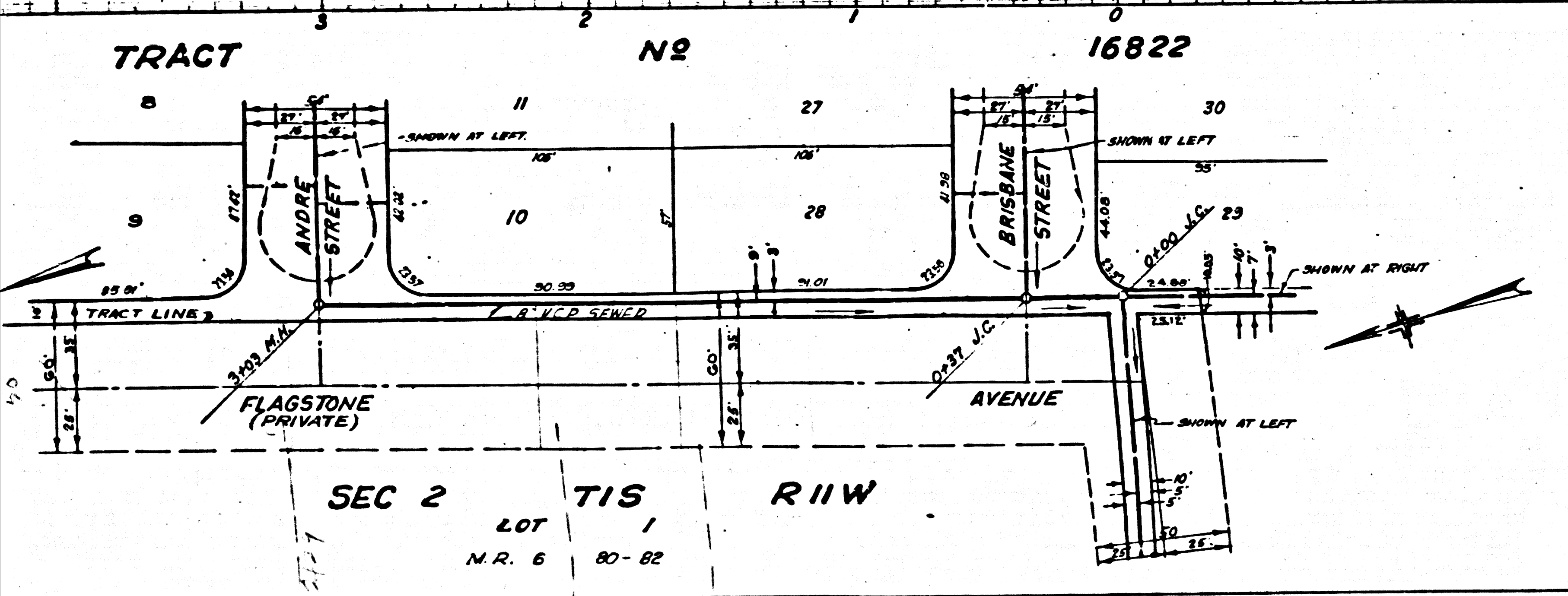
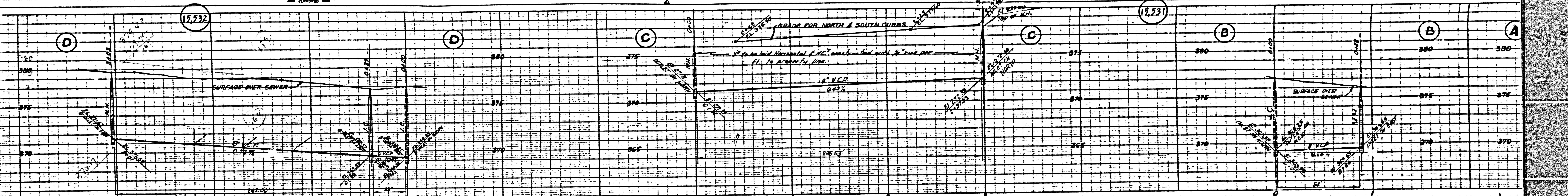
TRIM LINE
NEW YORK
HERRICK ELECTRIC CO
NEW YORK
HERRICK ELECTRIC CO
NEW YORK
HERRICK ELECTRIC CO



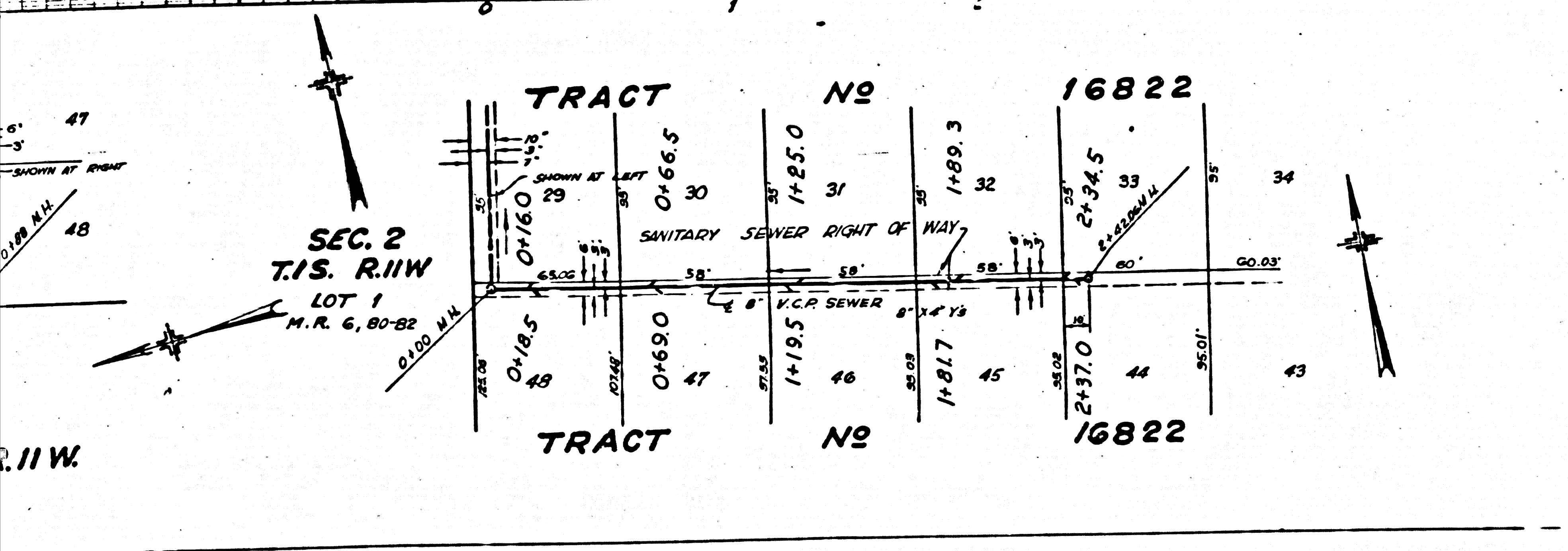
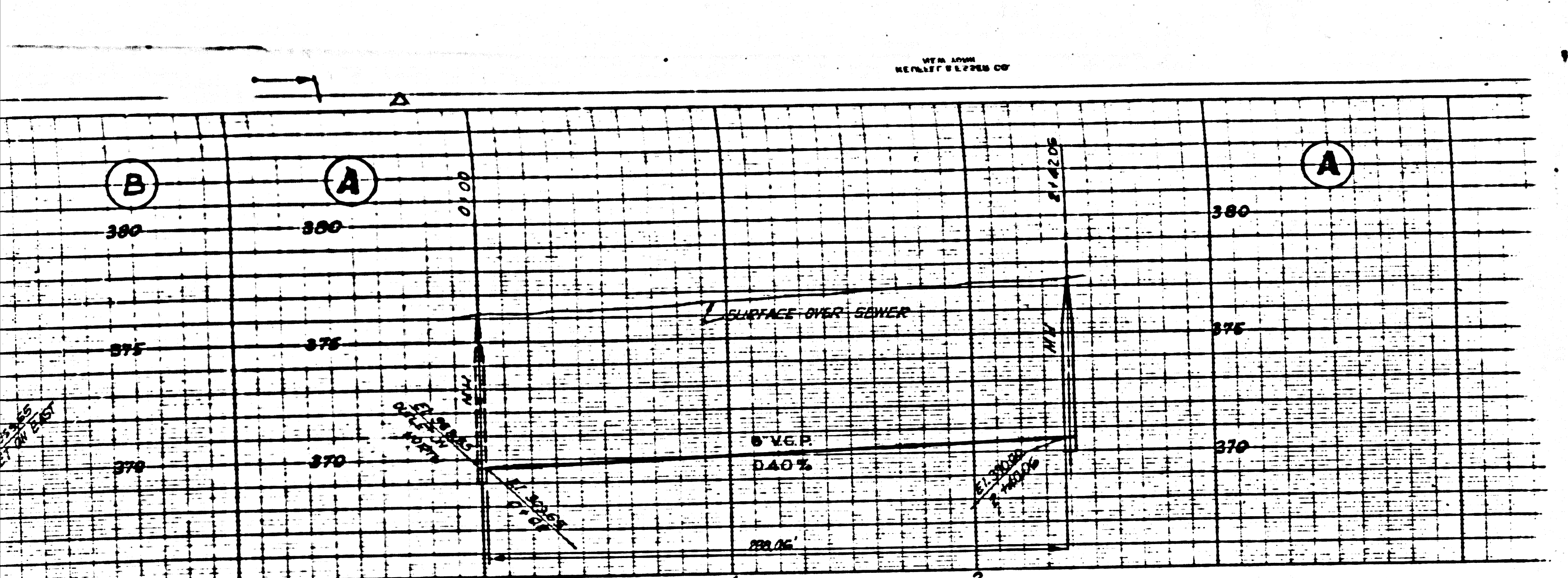
(2)



MEASUREMENTS FROM
 MONUMENT TO CORNER
 AND DISTANCE
 AND BEARING
 MEASUREMENTS FROM
 MONUMENT TO CORNER
 AND DISTANCE
 AND BEARING
 MEASUREMENTS FROM
 MONUMENT TO CORNER
 AND DISTANCE
 AND BEARING



SEC.
 T.I.S. R.
 LOT 1
 M.R. G. 6



TEMPLE CITY

(17.230)

PROFILE, ALIGNMENT AND GRADE OF SANITARY SEWERS TO BE CONSTRUCTED IN:

WESLESGROVE AVENUE
BETWEEN BRISBANE ST. AND BENRUD STREET

FLAGSTONE AVENUE
BETWEEN ANDRE ST. AND BENRUD ST.

LINCOLN AVENUE
BETWEEN ANDRE ST. AND BRISBANE ST.

ANDRE STREET
BETWEEN FLAGSTONE AVE. AND LINCOLN AVE.

BRISBANE STREET
BETWEEN FLAGSTONE AVE. AND WESLESGROVE AVE.

BENRUD STREET
BETWEEN WESLESGROVE AVE. AND LINCOLN AVE.

SANITARY SEWER RIGHTS OF WAY
IN STRAY A.S. 19082

PRIVATE CONTRACT NO. 2115
W.S. 46

PREPARED IN THE OFFICE OF
LEONARD H. GONDY
COUNTY ENGINEER

BY: *Leonard H. Gondy*
REG. C.E. 174823

SHEET 1 OF 1 SHEET
FOR LEGEND
SEE PLAN NO. S-2-64

NOTE:
ELEVATIONS TO WHICH THIS IMPROVEMENT IS TO BE CONSTRUCTED ARE SHOWN ON PLANS AND PROFILE GRADE POINTS FOR TOP OF CURB, CENTER LINE OF STREET OR CENTER LINE OF ALLEY ARE SHOWN BY CIRCLES ON PROFILES. AT ALL POINTS BETWEEN DESIGNATED POINTS THE GRADE SHALL BE ESTABLISHED SO AS TO CONFORM TO A STRAIGHT LINE DRAWN BETWEEN SAID DESIGNATED POINTS.
ELEVATIONS ARE IN FEET ABOVE U.S.S.A. DATUM OR NEAR SEA LEVEL.
THIS DRAWING AND THE DATE HEREON ARE HEREBY MADE A PART OF THE SPECIFICATIONS.
WORK SHALL BE CONSTRUCTED ACCORDING TO SPECIFICATIONS ON FILE IN THE OFFICE OF THE COUNTY ENGINEER AND SHALL BE PROSECUTED ONLY IN THE PRESENCE OF THE COUNTY ENGINEER.
BEFORE WORK CAN BE STARTED, THE CONTRACTOR MUST OBTAIN A PERMIT TO EXCAVATE IN COUNTY STREETS FROM THE L.A. COUNTY ROAD DEPT., 100 W. 1ST STREET, AND MAKE A DEPOSIT WITH THE COUNTY ENGINEER, 608 L.A. COUNTY ENGINEERING BLDG., SUFFICIENT TO COVER THE COST OF CONSTRUCTION INSPECTION AND RECORD PLANS.
APPROVAL OF THIS PLAN BY THE COUNTY OF LOS ANGELES DOES NOT CONSTITUTE A REPRESENTATION AS TO THE ACCURACY OR THE LOCATION OF, OR THE EXISTENCE OR NON-EXISTENCE OF ANY UNDERGROUND UTILITIES, PIPE OR STRUCTURE WITHIN THE LIMITS OF THIS PROJECT. (THIS NOTE APPLIES TO ALL SHEETS.)

COUNTY OF LOS ANGELES, CALIFORNIA
WILLIAM F. HALL, COUNTY ENGINEER

APPROVED BY: *William F. Hall* OFFICE ENGINEER

APPROVED BY: *Richard E. Wilson* SANITATION DISTRICT NO. 11

CHECKED BY: *Richard E. Wilson* JUN 20, 1958
OFFICE OF COUNTY ENGINEER, REG. C.E. NO. 7260

RECEIVED
OCT 3 1952
L.A. COUNTY ENGINEER
SANITATION DIVISION

JAN 11 1953