

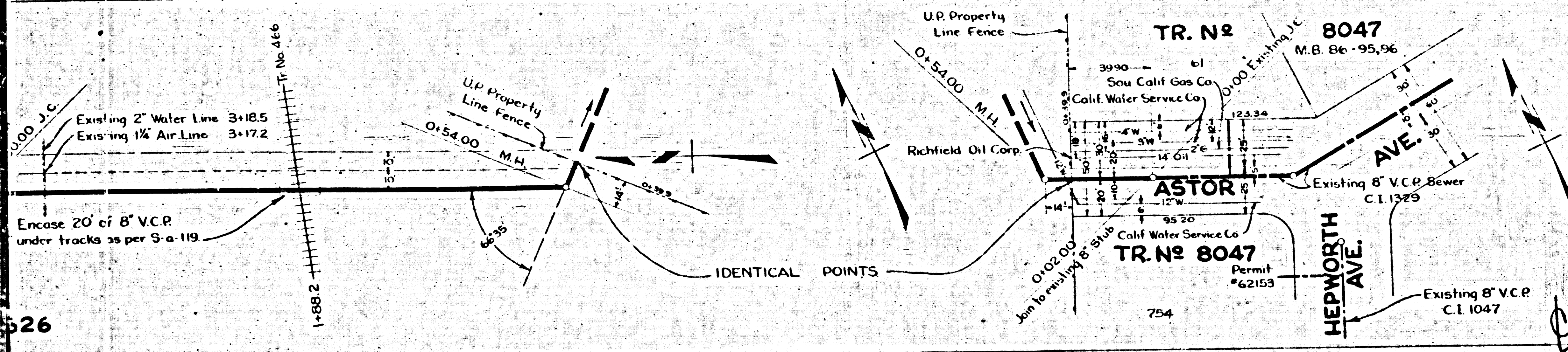
BM. W52 LB-846 P116 Elev 155.721  
 Astor Ave and Hephworth Ave SW Cor  
 B.L. Point in curb S. of S. of Second of curb  
 return.

EAST LOS ANGELES 15,032

PROFILE, ALIGNMENT AND GRADE OF THE  
**SANITARY SEWER**  
 TO BE CONSTRUCTED IN  
**UNION PACIFIC PROPERTY**  
**TRACT NO. 8626**  
 NORTH AND WEST OF  
 ASTOR AVE AND HEPWORTH AVE.

- (1) USE STANDARD MANHOLE FRAME AND COVER, S.A. 117.
  - (2) USE STANDARD STRENGTH PIPE.
  - (3) USE CEMENT MORTAR FOR ALL VITRIFIED CLAY PIPE JOINTS.
  - (4) RESURFACE ALL TRENCH WITHIN PAVED AREA TO MEET LOS ANGELES COUNTY ROAD DEPT. IN ACCORDANCE WITH PERMIT.
  - (5) ENCASE FOUR FEET OF SEWER AT POINTS OF INTERFERENCE WITH POLES AS PER S-11B.
  - (6) ALL STRUCTURES SHALL BE BRICK SEWER STRUCTURES, S-104.
  - (7) ALL CONNECTIONS MUST COMPLY WITH COUNTY SEWER ORDINANCE NO. 1595.
  - (8) CONSTRUCTION DIVISION OF THE COUNTY ENGINEER'S OFFICE SHALL BE NOTIFIED 24 HOURS PRIOR TO START OF CONSTRUCTION.
  - (9) STOPPERS TO BE INSTALLED WITH JOINT COMPOUND BY MANUFACTURER AT HIS PLANT. SPEC'S SEC. 33, 40.
  - (10) CONCRETE PAVEMENT TO BE CUT NOT LESS THAN 2" IN DEPTH WITH CONCRETE SAW. SPEC'S SEC. 62.
- NOTE: NO REPRESENTATIVE OF THE COUNTY ENGINEER WILL SURVEY OR LAY OUT ANY PORTION OF THE WORK. THE OWNER AND CONTRACTOR SHALL BE RESPONSIBLE FOR THE ACCURACY OF THE LOCATION, THE EXISTENCE OR NON-EXISTENCE OF ANY UNDERGROUND UTILITY PIPE OR STRUCTURE WITHIN THE LIMITS OF THIS PROJECT.

PRIVATE CONTRACT NO. 2121  
 W.S. 36  
 DATE: MARCH 1952  
 PREPARED IN THE OFFICES OF  
 UNION PACIFIC RAILROAD CO.

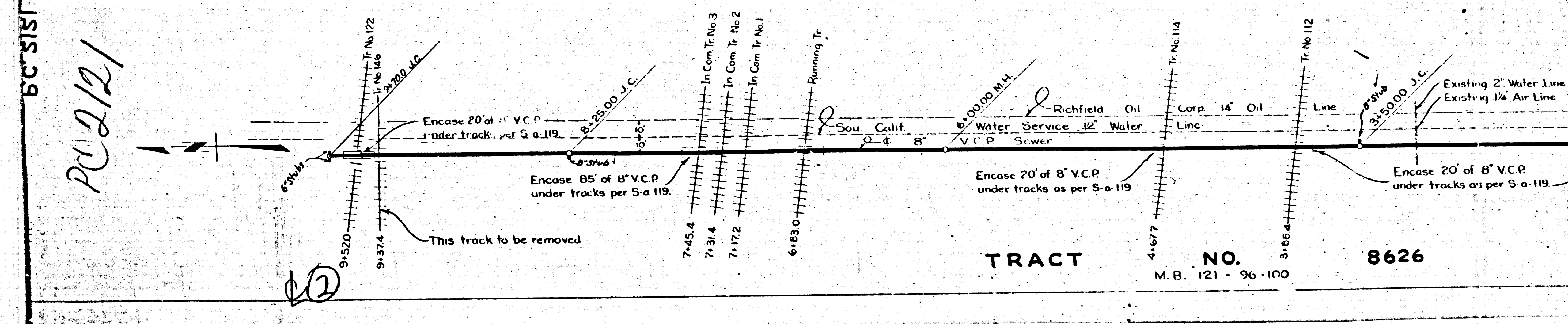
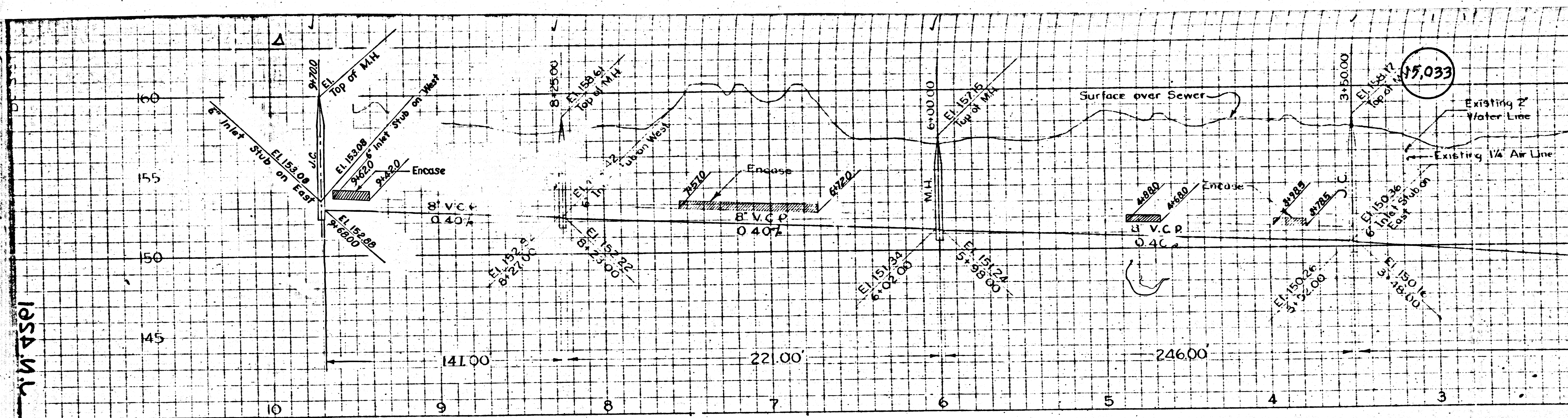


INDEX MAP  
 PC. NO. 2121  
 J.N. 4261

BY: Charles W. McKee  
 P.E. C.E. NO. 14108  
 APR 29 1952  
 FOR LEGEND  
 SEE PLAN NO. S-119  
 NOTE: GRADES TO WHICH THIS IMPROVEMENT IS TO BE CONSTRUCTED ARE SHOWN ON PLANS AND PROFILE GRADE POINTS FOR TOP OF CURB, CENTER LINE OF STREET OR CENTER LINE OF ALLEY ARE SHOWN IN PROFILE. AT ALL POINTS BETWEEN DESIGNATED POINTS THE GRADE SHALL BE ESTABLISHED IN ACCORDANCE WITH A PARABOLA THE VERTEX BEING BETWEEN SAID DESIGNATED POINTS. ELEVATIONS ARE IN FEET ABOVE U.S.C. DATUM ON MEAN SEA LEVEL. THE SPECIFICATIONS FOR THIS DRAWING AND THE DATA HEREON ARE HEREBY MADE A PART OF THE SPECIFICATIONS. WORK SHALL BE CONSTRUCTED ACCORDING TO SPECIFICATIONS ON FILE IN THE OFFICE OF THE COUNTY ENGINEER AND SHALL BE PROTECTED UNDER THE PRESENCE OF THE COUNTY ENGINEER. BEFORE WORK CAN BE STARTED, THE CONTRACTOR MUST OBTAIN A PERMIT TO EXCAVATE IN ACCORDANCE WITH THE COUNTY ENGINEER. THE COUNTY ENGINEER'S SIGNATURE AND MAJOR COUNTY OF CONSTRUCTION INSPECTION AND RECORD PLANS. THE COUNTY ENGINEER'S SIGNATURE TO COVER THE APPROVAL OF THIS PLAN BY THE COUNTY OF LOS ANGELES DOES NOT CONSTITUTE A REPRESENTATION AS TO THE ACCURACY OF THE LOCATION, OR THE EXISTENCE OR NON-EXISTENCE OF ANY UNDERGROUND UTILITY PIPE OR STRUCTURE WITHIN THE LIMITS OF THIS PROJECT.

COUNTY OF LOS ANGELES, CALIFORNIA  
 APPROVED BY: *Charles W. McKee* COUNTY ENGINEER  
 APPROVED BY: *Richard R. K... 1-19-52* COUNTY ENGINEER  
 CHECKED BY: *Richard R. K... 1-19-52* COUNTY ENGINEER





PC 2121

BC 5181 W 43E1

TRACT NO. 8626  
M.B. 121 - 96 - 100