

BELLFLOWER

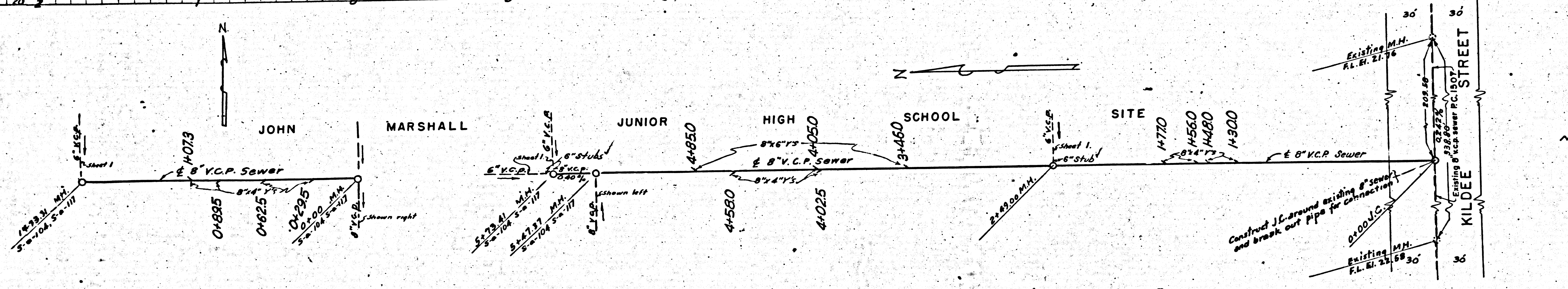
PROFILE, ALIGNMENT AND GRADE OF
8-INCH SANITARY SEWER
TO BE CONSTRUCTED AT
JOHN MARSHALL JUNIOR HIGH SCHOOL
AND IN
KILDEE STREET
BETWEEN WOODRUFF AVENUE AND OCANA AVE.

PRIVATE CONTRACT NO. 2125
W.S. 31
SHEET 2 OF 2 SHEETS
DATE: JULY, 1952

PREPARED IN THE OFFICES OF
GLEN ROOD, Civil Engineer,
Glen Rood R.E. NO. 2093.

SCALE: VERT. 1" = 4'
HORIZ. 1" = 40'

P.C. 2125



P.C. 2125
J.N. 4265

NOTE: For construction notes see Sheet No. 1

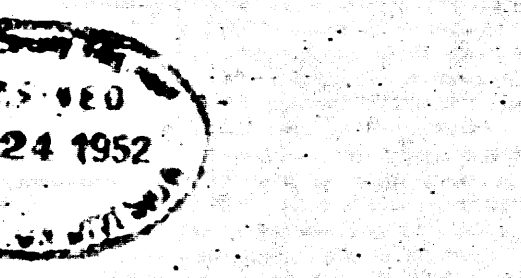
COUNTY OF LOS ANGELES, CALIFORNIA

APPROVED: WILLIAM J. FOX, COUNTY ENGINEER
BY: *Anna Steele*
ASS'TY. COUNTY ENGINEER

APPROVED: A. M. BAYNE, CHIEF ENGINEER OF COUNTY
SIGNATURE: *A. M. Bayne*
BY: *A. M. Bayne*
CHIEF ENGINEER

CHECKED: *H. L. Swales* 7-21-52
CHIEF OF DIVISION OF PUBLIC WORKS, REG. E. L. N. 6412

Checked 3-9-53 W. L. ...



CO