

(1) USE STANDARD MANHOLE FRAME AND COVER, 36" X 42"
 (2) USE STANDARD STRENGTH PIPE
 (3) USE CEMENT MORTAR JOINTS FOR ALL JOINTS
 (4) CONSTRUCT ALL TRENCH WITHIN LINED AREA TO MEET LOS ANGELES COUNTY ROAD DEPT REQUIREMENTS
 (5) CONSTRUCT MANHOLE CONNECTIONS AT PROPOSED LINE 5 FEET BELOW CURB GRADE
 (6) ELEVATE FOUR FEET OF SEWER AT POINTS OF INTERFERENCE WITH POLES AS PER S.F. 19
 (7) ALL STRUCTURES SHALL BE BRICK SEWER STRUCTURES, 5/8" DIA.

NOTE:
 NO REPRESENTATIVE OF THE COUNTY ENGINEER SHALL SURVEY OR LAY OUT ANY PORTION OF THE WORK.
 THE OWNER OR HIS AUTHORIZED REPRESENTATIVE SHALL FURNISH THE COUNTY ENGINEER WITH GRADE SHEETS AND STATIONS OF ALL WORKS, EMBANKMENTS AND ERECTIONS AND SHALL PROVIDE STAKES FOR THEM AT THEIR PROPER LOCATIONS WITH STATIONING PLAINLY MARKED. ANY CHANGE IN LOCATION SHALL BE REQUESTED BY LETTER OF THE OWNER OR HIS REPRESENTATIVE.
 NO CHANGES SHALL BE MADE IN THESE PLANS WITHOUT APPROVAL OF THE COUNTY ENGINEER.

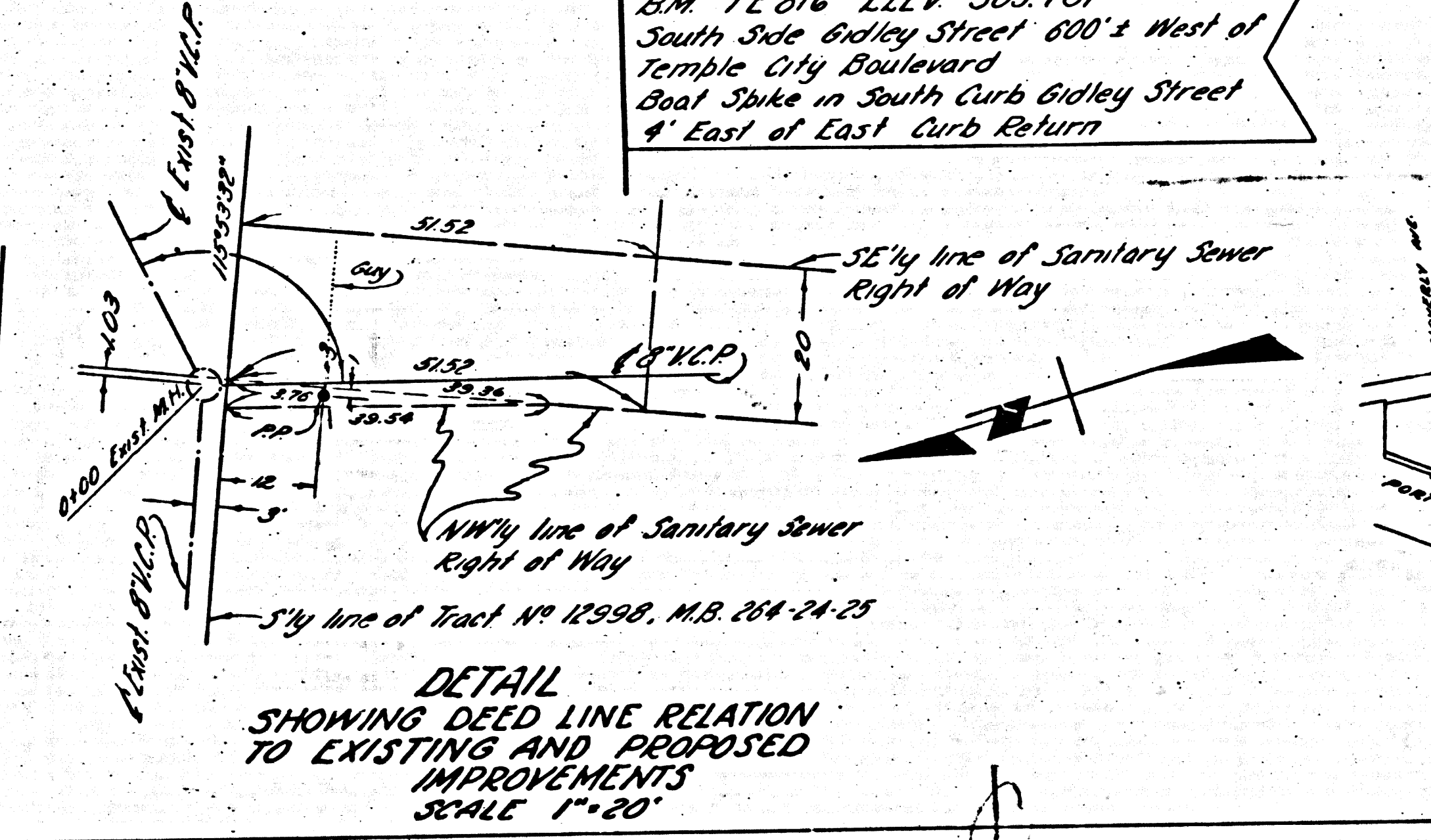
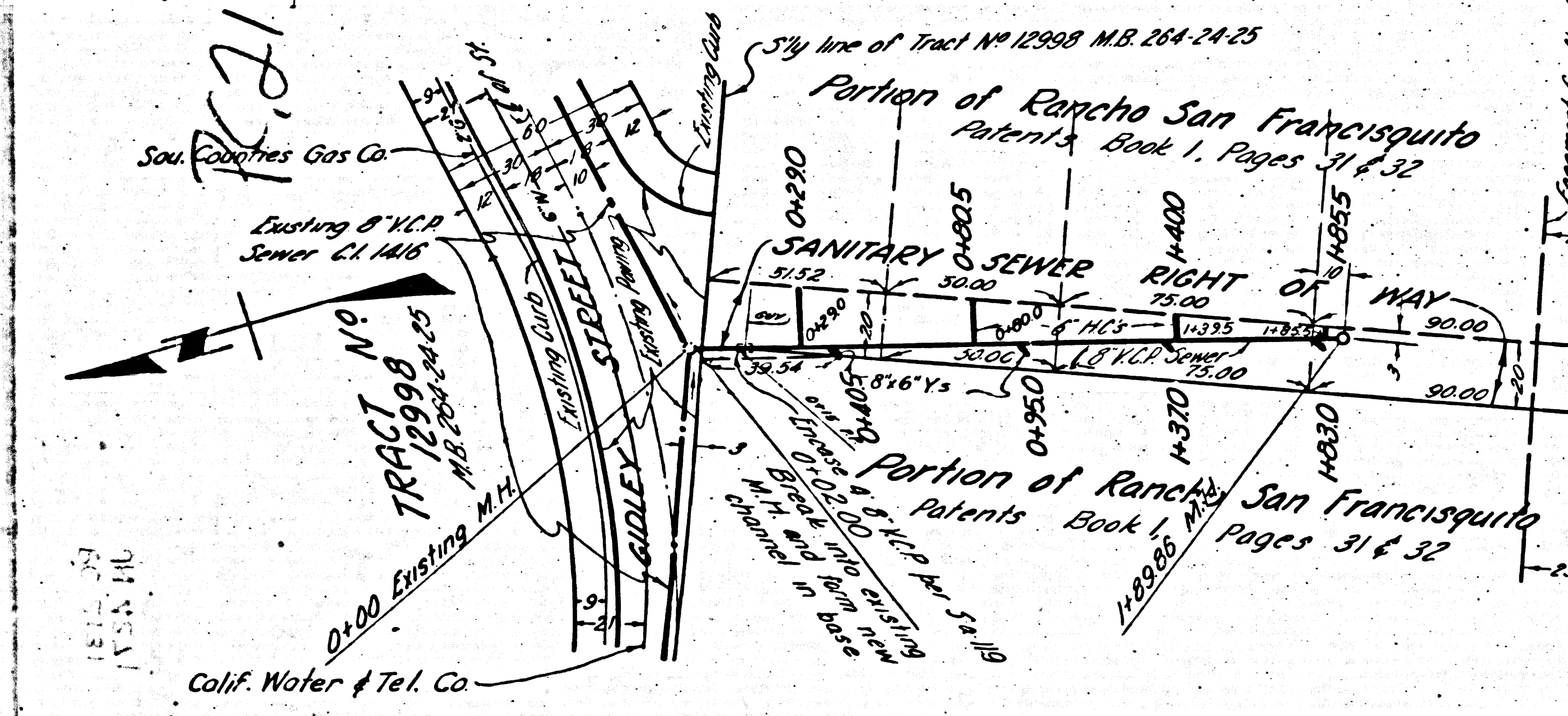
NOTE:
 PROVIDE STAKES ON PROPERTY LINES OR ADJACENT LINES PRODUCED AT RIGHT ANGLES TO THE SEWER LINE AT THE CENTER LINE OF EACH MANHOLE.

NOTE:
 STRUCTURES TO BE INSTALLED WITH JOINT COMPOUND BY MANUFACTURER AT HIS PLANT, SPEC'S SEC. 33.4B. CONCRETE PAVEMENT TO BE LAYED NOT LESS THAN 2" IN DEPTH WITH CORROSION RESISTANT SURF. SPEC'S SEC. 60. INSTALL WIRE # TAGS PER SPEC'S, SEC. 60.

PROFILE ALIGNMENT AND GRADE OF
SANITARY SEWERS
 TO BE CONSTRUCTED IN
**SANITARY SEWER RIGHT OF WAY IN A
 PORTION OF
 RANCHO SAN FRANCISCO**
 SOUTHWESTERLY 185' FROM THE
 SOUTHERLY LINE OF TRACT NO
 12998, M.B. 204-24-25

PRIVATE CONTRACT NO. 2191
 W.S. 44
 SHEET 1 OF 1 SHEET

SCALE: HORIZ. 1" = 40'
 VERT. 1" = 10'
 FEBRUARY, 1952
 PREPARED BY: *A.C. ...*
 REG. C.E. NO. 983



FOR LEGEND
 SEE PLAN 3-3-54

NOTE:
 GRADES TO WHICH THIS IMPROVEMENT IS TO BE CONSTRUCTED ARE SHOWN ON PLANS AND PROFILE GRADE POINTS FOR TOP OF CURB, CENTER LINE OF STREET, OR CENTER LINE OF ALLEY ARE SHOWN BY CIRCLES ON PROFILES. AT ALL POINTS BETWEEN DESIGNATED POINTS THE GRADE SHALL BE ESTABLISHED TO BE IN CONFORMITY TO A STRAIGHT LINE DRAWN BETWEEN SAID DESIGNATED POINTS. ELEVATIONS ARE IN FEET ABOVE U.S.G.S. DATUM OR MEAN SEA LEVEL. THIS DRAWING AND THE DATA HEREON ARE HEREBY MADE A PART OF THE SPECIFICATIONS.

WORK SHALL BE CONSTRUCTED ACCORDING TO SPECIFICATIONS ON FILE IN THE OFFICE OF THE COUNTY ENGINEER AND SHALL BE PROSECUTED ONLY IN THE PRESENCE OF THE COUNTY ENGINEER.

BEFORE WORK CAN BE STARTED THE CONTRACTOR MUST OBTAIN A PERMIT TO EXCAVATE IN COUNTY STREETS FROM THE L.A. COUNTY ROAD DEPARTMENT, 611 S. MAIN STREET AND MAKE A DEPOSIT WITH THE COUNTY ENGINEER, 600 L.A. COUNTY ENGINEERS BLDG., SUFFICIENT TO COVER THE COST OF CONSTRUCTION INSPECTION AND RECORD PLANS. APPROVAL OF THESE PLANS BY THE COUNTY OF LOS ANGELES DOES NOT CONSTITUTE A REPRESENTATION AS TO THE ACCURACY OF THE LOCATION OF, OR THE EXISTENCE OR NON-EXISTENCE OF ANY UNDERGROUND UTILITY, PIPE OR STRUCTURE WITHIN THE LIMITS OF THIS PROJECT.

COUNTY OF LOS ANGELES, CALIFORNIA
 WILLIAM J. FOX COUNTY ENGR.
 APPROVED BY: *[Signature]*
 CHIEF DEPUTY

APPROVED BY: *[Signature]*
 CHIEF ENGINEER OF COUNTY SANITATION DISTRICT NO. 18

CHECKED BY: *[Signature]*
 OFFICE OF THE COUNTY ENGINEER, REG. C.E. NO. 441

INDEX MAP
 RC 2191
 J.N. 4271
 SCALE 1" = 400'

check 16-18-52

12998
 12999
 13000
 13001
 13002
 13003
 13004
 13005
 13006
 13007
 13008
 13009
 13010
 13011
 13012
 13013
 13014
 13015
 13016
 13017
 13018
 13019
 13020
 13021
 13022
 13023
 13024
 13025
 13026
 13027
 13028
 13029
 13030
 13031
 13032
 13033
 13034
 13035
 13036
 13037
 13038
 13039
 13040
 13041
 13042
 13043
 13044
 13045
 13046
 13047
 13048
 13049
 13050
 13051
 13052
 13053
 13054
 13055
 13056
 13057
 13058
 13059
 13060
 13061
 13062
 13063
 13064
 13065
 13066
 13067
 13068
 13069
 13070
 13071
 13072
 13073
 13074
 13075
 13076
 13077
 13078
 13079
 13080
 13081
 13082
 13083
 13084
 13085
 13086
 13087
 13088
 13089
 13090
 13091
 13092
 13093
 13094
 13095
 13096
 13097
 13098
 13099
 13100