

14978

TEMPLE CITY

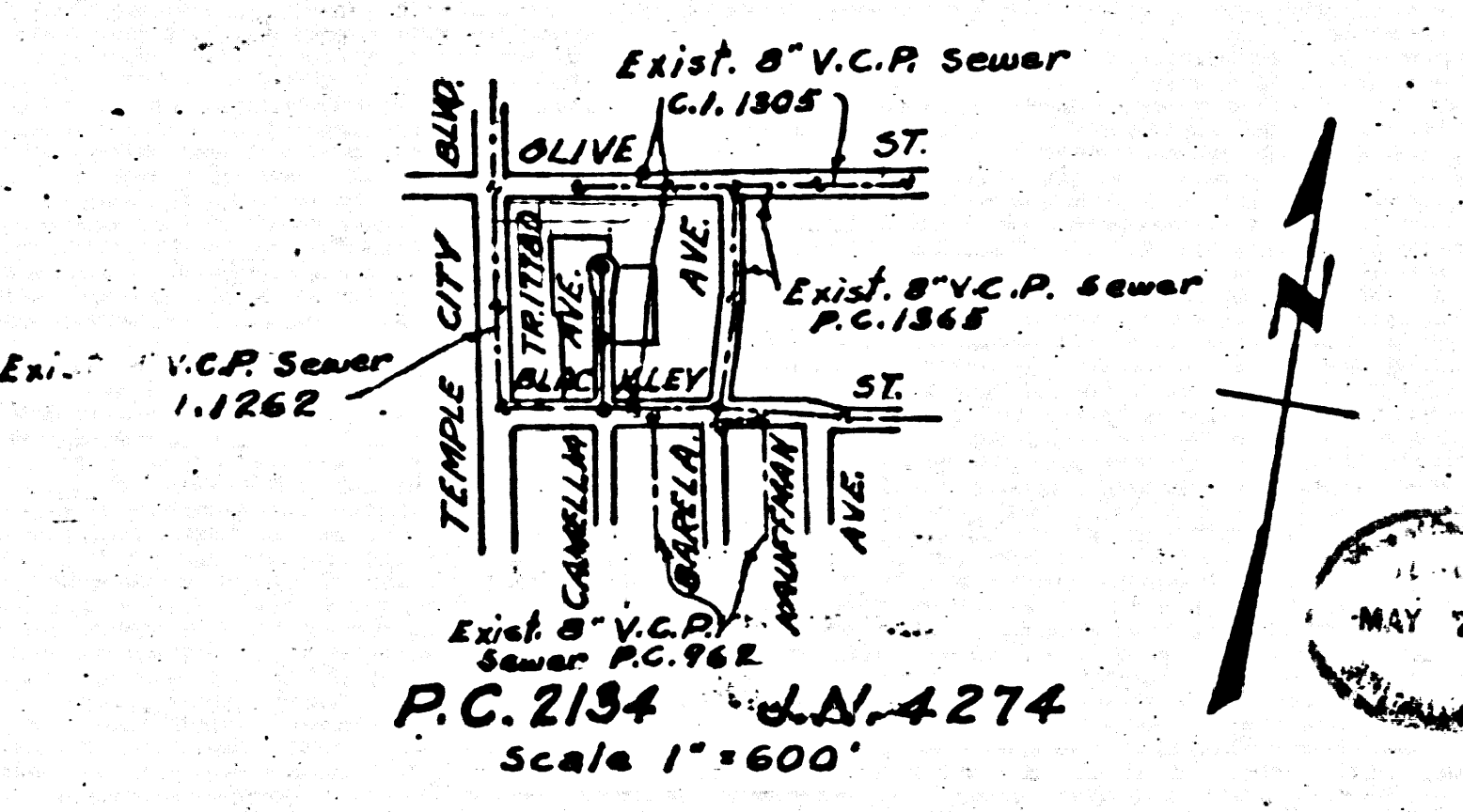
STANDARD MANHOLE FORMER AND COVERS, 24" DIAMETER STRENGTH TYPE  
 12" RINGS FOR ALL VITRIFIED CLAY PIPE JOINTS  
 12" RINGS THROUGHOUT THE AREA TO MEET LOS ANGELES COUNTY DEPARTMENT REQUIREMENTS  
 EXIST. MANHOLE OR STRUCTURE WITH ELEVATION AT PROPERTY LINE & FEET  
 STRUCTURES SHALL BE DRAIN GUTTER STRUCTURES, 4" x 10"  
 4" FROM FACE OF CURB AT POINTS OF INTERFERENCE WITH POLES AS PER S-4-119  
 REPRESENTATIVE OF THE COUNTY ENGINEER SHALL SURVEY OR LAY OUT AND BE THE WORK  
 HEREIN HIS AUTHORIZED REPRESENTATIVE SHALL FURNISH THE COUNTY ENGINEER WITH  
 FEET & INCHES IN ALL MEASUREMENTS & BY DIMENSIONS & MARKED POINTS BY STAKES  
 NEAR PROPERTY LINES WITH DIMENSIONS PLAINLY VISIBLE. ANY CHANGE OF LOCATION  
 THEREOF, IN ANY CASE, BY THE OWNER OR HIS REPRESENTATIVE  
 (OWNER) SHALL BE MADE IN THE OFFICE OF THE COUNTY ENGINEER  
 AS TO BE INSTALLED WITHIN 100 FT. COMPANIES BY THE CONTRACTOR AT HIS PLANT  
 C.S. 4" x 4" x 1/2" GALV. STEEL WITH 1/2" DIA. BUSHINGS  
 ALL WIRE AND TAGS PER SPECS. SEC. 48

PROFILE, ALIGNMENT AND DEGREE OF  
**SANITARY SEWERS**  
 TO BE SUBMITTED BY  
**CAMELLIA AVE.**  
 NORTH OF BLACKLEY STREET  
 IN TRACT 17780

PRIVATE CONTRACT NO. 2134  
 W.S. 44  
 ONE SHEET

PREPARED IN THE OFFICES OF  
**WALTON B. HUNNELLEY**  
 CIVIL ENGINEER  
 REG. C.E. NO. 4896

INDEX MAP



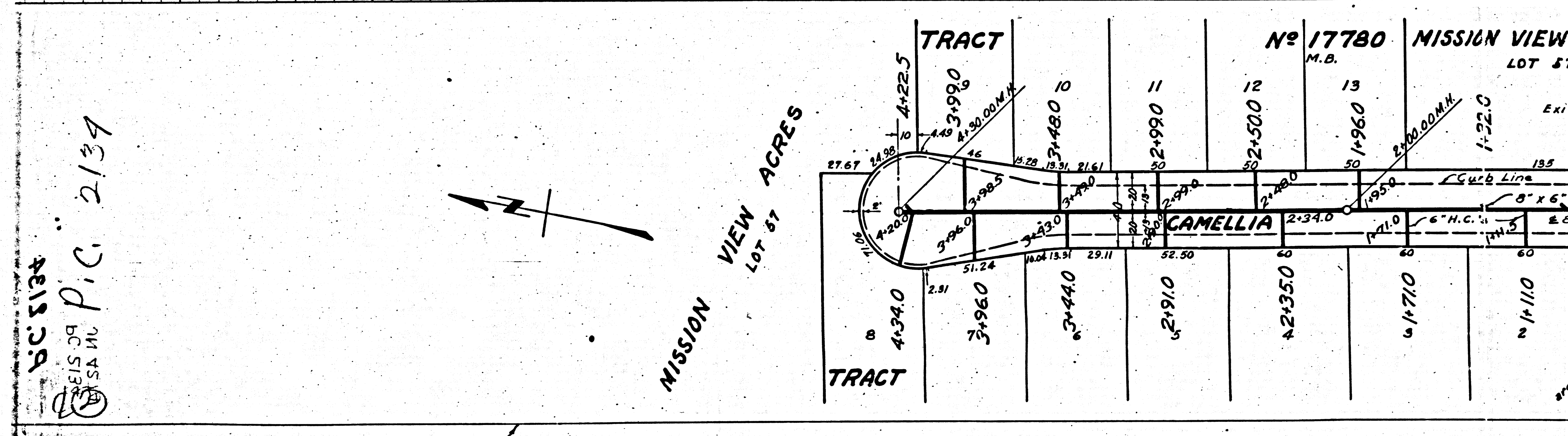
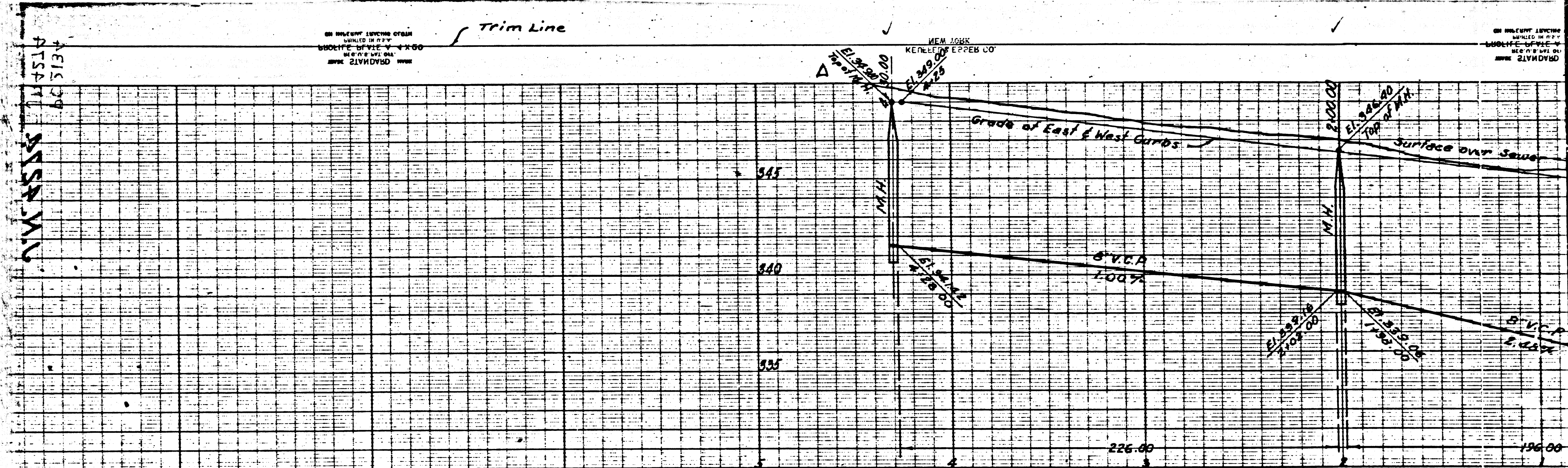
FOR LEGEND  
 See Plan No. 6-a-64  
 NOTE:  
 ELEVATIONS ARE IN FEET ABOVE U.S.S. DATUM OR MEAN SEA LEVEL.  
 THIS DRAWING AND THE DATA HEREON ARE HEREBY MADE A PART OF THE SPECIFICATIONS.  
 WORK SHALL BE CONSTRUCTED ACCORDING TO SPECIFICATION BY THE OFFICE OF THE COUNTY  
 ENGINEER AND SHALL BE PROSECUTED ONLY IN THE PRESENCE OF THE COUNTY ENGINEER.  
 BEFORE WORK CAN BE STARTED THE CONTRACTOR MUST OBTAIN A PERMIT TO EXCAVATE IN COUNTY  
 STREETS FROM LOS ANGELES COUNTY ROAD DEPARTMENT, 100 WEST 8th ST. AND MAKE A DEPOSIT  
 WITH THE COUNTY ENGINEER, THE COUNTY ENGINEERING BUILDING SUFFICIENT TO COVER COST OF  
 CONSTRUCTION INSPECTION AND RECORD PLANS.  
 IF WORK IS TO BE DONE IN A STATE HIGHWAY, A PERMIT MUST BE OBTAINED FROM THE  
 STATE OF CALIFORNIA, DIVISION OF HIGHWAYS, 180 SOUTH SPRING ST. AFTER MAKING THE DEPOSIT  
 WITH THE COUNTY ENGINEER.  
 APPROVAL OF THIS PLAN BY THE COUNTY OF LOS ANGELES DOES NOT CONSTITUTE A  
 REPRESENTATION AS TO THE ACCURACY OF THE LOCATION OF, OR THE EXISTENCE OR NONEXISTENCE  
 OF ANY UNDERGROUND UTILITY PIPE OR STRUCTURE WITHIN THE LIMITS OF THIS PROJECT.

COUNTY OF LOS ANGELES, CALIFORNIA  
 APPROVED: **WILLIAM J. FOX** COUNTY ENGINEER  
 APPROVED BY: **Richard E. Kuhn** CHIEF ENGINEER OF COUNTY SANITATION DISTRICT NO. 15  
 BY: **Richard E. Kuhn** CHIEF DEPUTY  
 BY: **Richard E. Kuhn** OFFICE ENGINEER

CHECKED BY: **Richard E. Kuhn** 4-15-52  
 OFFICE OF COUNTY ENGINEER R.E.N. 7860

Checked 8-4-52 *[Signature]*

Trim Line



50 5138  
 5138 OR  
 SA 111  
 P.C. 2139

Trim Line

M5