

Use Standard Strength pipe.
Use Cement Mortar for all vitrified clay pipe joints.
Encase four feet of sewer at points of interference with poles as per S-a-18.
All structures shall be brick sewer structures as per Plan No. S-a-104.
Use standard manhole frames and covers as per Plan No. S-a-117.
Resurface all trenches within paved area to meet Los Angeles County Road Dept. requirements.
House connection to be constructed at 1/4" rise per foot to property line.

No revisions shall be made in these plans without approval of the County Engineer.
No representative of the County Engineer will survey or lay out any portion of the work.
The owner or his authorized representative shall furnish the County Engineer with grade sheets and stations of all house connections and Y branches and shall provide stakes for them at their proper locations with stationing plainly marked.
Any change of location shall be requested in writing by the owner or his representative.

Before any connections for the disposal of liquid industrial waste is to be made to this sewer, detailed plans must be submitted to and a permit secured from the County Engineer.
Sanitation Districts must be notified before work can start.
Approval of this plan by the County of Los Angeles does not constitute a representation as to the accuracy of the location of, or the existence or non-existence of any underground pipe, utility, or structure within the limits of this project.

Stoppers to be installed with joint material by the manufacturer at no more than spec. sec. 33.48.
Concrete pavement to be cut not less than 2" in depth with concrete saw. Spec. sec. 95.

PROFILE ALIGNMENT AND GRADE OF
SANITARY SEWER
TO BE CONSTRUCTED IN
YATES AVE.
FROM EXISTING SEWER 200'
SOUTH OF GARFIELD AVE.
NORTHERLY 2452'

PRIVATE CONTRACT NO. 2136
W.S. 36

SHEET 1 OF 1 SHEET

PREPARED IN THE OFFICES OF
CENTRAL MANUFACTURING DISTRICT INC.
CHECKED AND APPROVED BY *Charles C. Miller*
REG. C.E. NO. 122

SCALE: VERT. 1"=4'
HORIZ. 1"=40'

FOR LEGEND
SEE PLAN NO. S-a-64

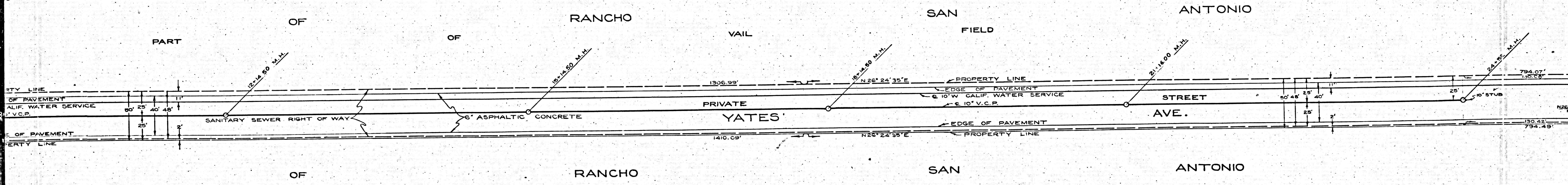
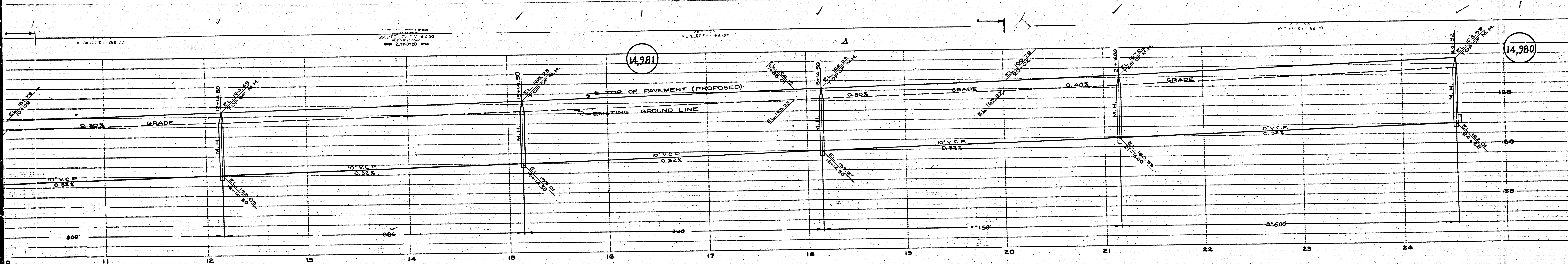
APRIL 1952

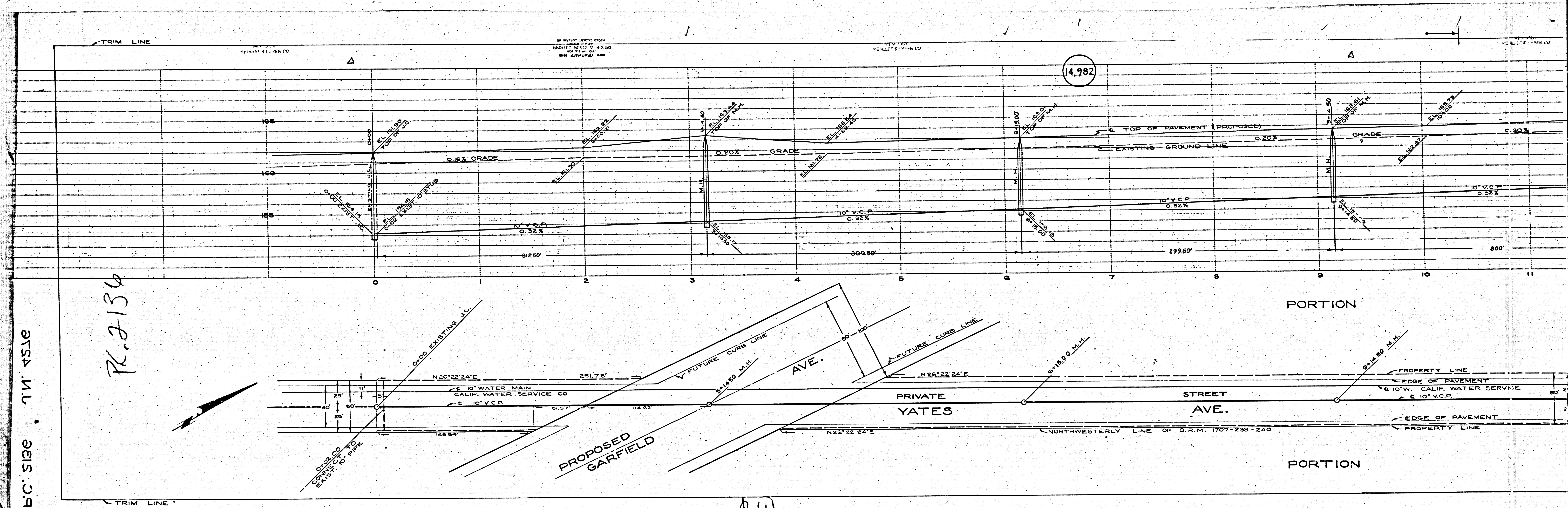
GRADES TO WHICH THIS IMPROVEMENT IS TO BE CONSTRUCTED ARE SHOWN ON PLANS AND PROFILES. GRADE POINTS FOR TOP OF CURB, CENTER LINE OF STREET OR CENTER LINE OF ALLEY ARE SHOWN BY CIRCLES ON PROFILES AT ALL POINTS BETWEEN DESIGNATED POINTS THE GRADE SHALL BE ESTABLISHED SO AS TO CONFORM TO A STRAIGHT LINE BETWEEN SAID DESIGNATED POINTS.
ELEVATIONS ARE IN FEET ABOVE U.S.G.S. DATUM OR MEAN SEA LEVEL.
THIS DRAWING AND THE DATA HEREON ARE HEREBY MADE A PART OF THE SPECIFICATIONS FOR THE WORK TO BE CONSTRUCTED ACCORDING TO SPECIFICATIONS ON FILE IN THE OFFICE OF THE COUNTY ENGINEER AND SHALL BE PROSECUTED ONLY IN THE PRESENCE OF THE COUNTY ENGINEER.
BEFORE WORK CAN BE STARTED THE CONTRACTOR MUST OBTAIN A PERMIT TO EXCAVATE IN COUNTY STREETS FROM THE L.A. COUNTY ROAD DEPT. BY SOUTH MAIN ST., AND MAKE A DEPOSIT WITH THE COUNTY ENGINEER, 522 L.A. COUNTY ENGINEER BLDG., SUFFICIENT TO COVER THE COST OF CONSTRUCTION, INSPECTION AND RECORD PLANS.

COUNTY OF LOS ANGELES, CALIFORNIA
WILLIAM J. FOX COUNTY ENGINEER
APPROVED BY *W. J. Fox* CHIEF DEPUTY
A.M. RAWN OFFICE ENGINEER
APPROVED BY *A.M. Rawn* CHIEF ENGINEER OF COUNTY SANITATION DISTRICT NO. 8
CHECKED BY *John A. ...* OFFICE OF COUNTY ENGINEER REG. C.E. NO. 7304

PC 5136
1/4 5/31/52

103





b.c. side . 71' 4516

R. 2136

14.982

20