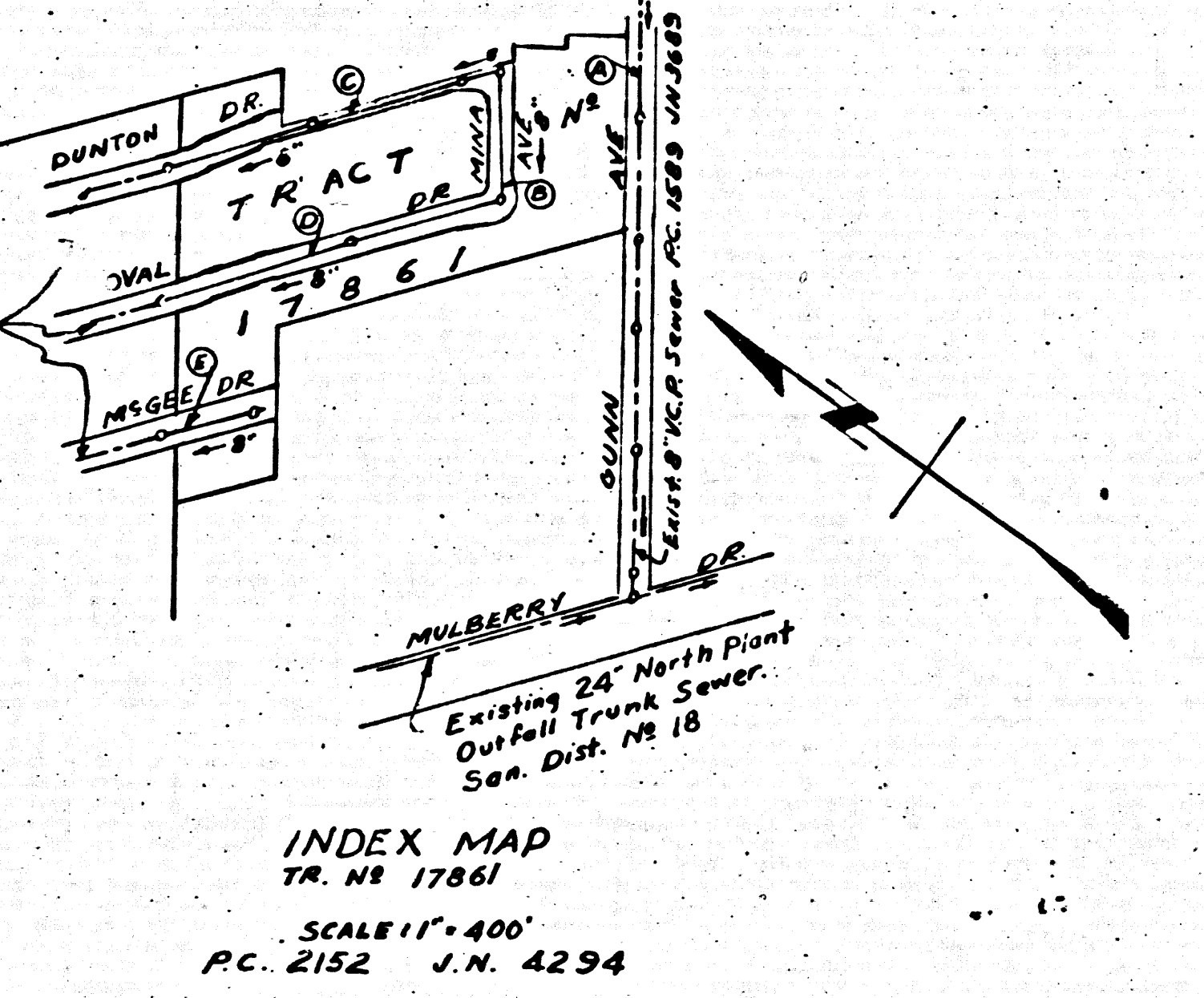
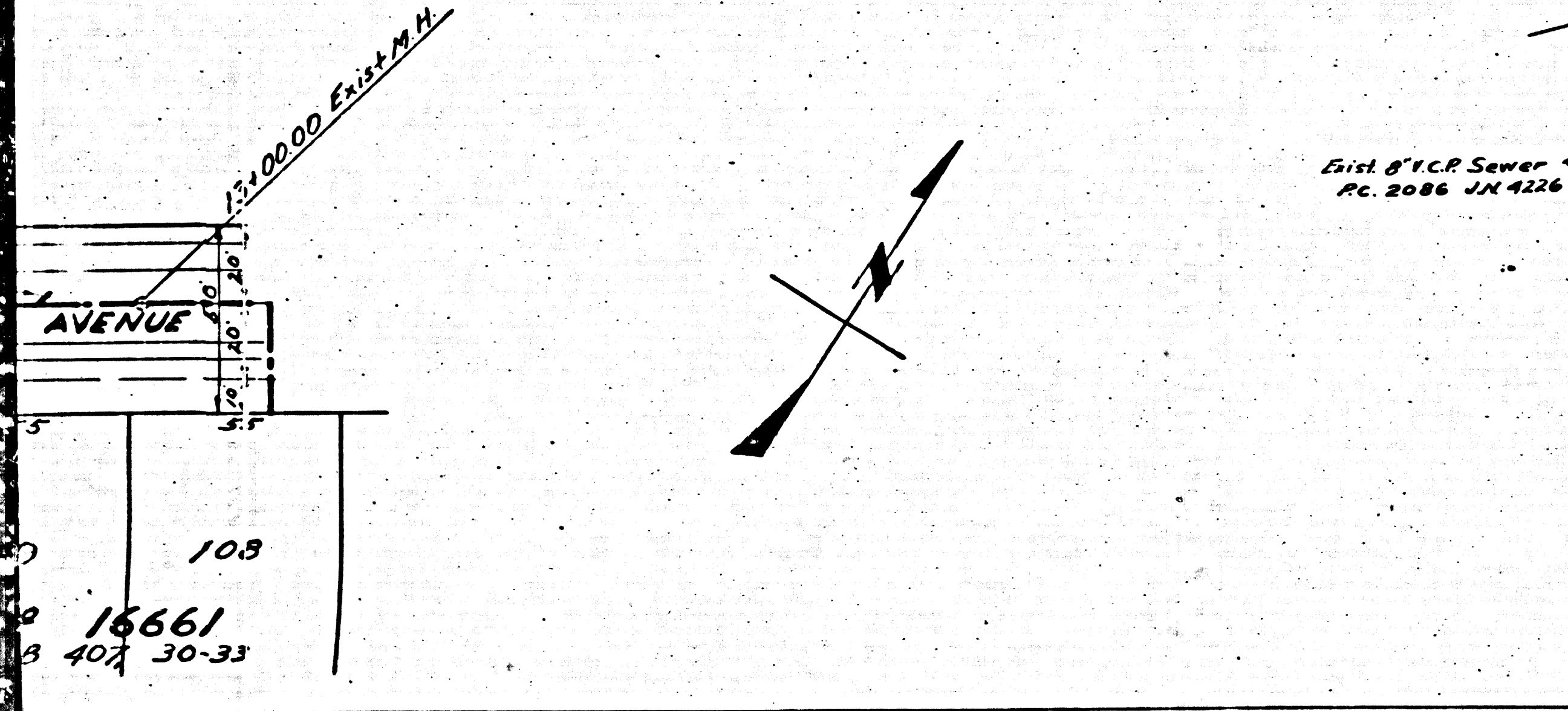


**WHITTIER**

BM "B" ST-271Y B'7122 Cor in West end  
 -curb-headwall: 8'-5" from 6' U.P.R.R. - 5'  
 17' to West R. Mills. Ave.  
 Elev. 159.465

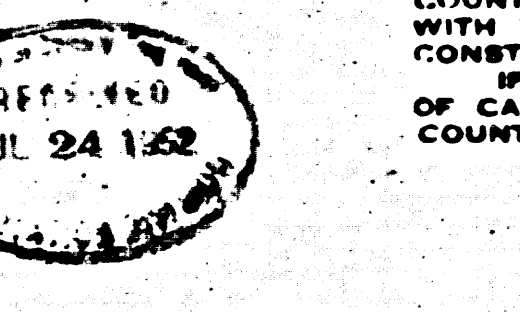
Note: L.A. Co. Rd. Dept. 1951 Adj. Elev. 159.511



	USE STANDARD STRENGTH PIPE	17.172
	USE CEMENT MORTAR JOINTS - VITRIFIED CLAY PIPE JOINTS	
	ENGAGE FOUR FEET OF SEWER AT POINTS OF INTERFERENCE WITH POLES AS PER S. 4115	
	CONSTRUCT HOUSE CONNECTIONS WITH INVERT AT PROP. LINE 6'-FEET-BELOW CURB GRADE	
	ALL STRUCTURES SHALL BE BRICK SEWER STRUCTURES AS PER PLAN NO. S-4106	
	USE STANDARD MANHOLE FRAMES AND COVERS AS PER PLAN NO. S-4117	
	CONSTRUCT TOPS OF ALL STRUCTURES IN RIGHTS OF WAY 6" ABOVE FINISHED GRADE	
	RESURFACE ALL TRENCHES WITHIN PAVED AREA TO MEET LOS ANGELES COUNTY ROAD DEPT. OR STATE HIGHWAY REQUIREMENTS IN ACCORDANCE WITH PERMIT	
	PROVIDE STAKES ON THE PROPERTY LINES OR PROPERTY LINES PRODUCED, AT RIGHT ANGLES TO THE SEWER LINE AT THE CENTER LINE OF EACH MANHOLE	
	NO REVISIONS SHALL BE MADE IN THESE PLANS WITHOUT APPROVAL OF THE COUNTY ENGINEER	
	NO REPRESENTATIVE OF THE COUNTY ENGINEER WILL SURVEY OR LAY OUT ANY PORTION OF THE WORK	
	THE OWNER OR HIS AUTHORIZED REPRESENTATIVE SHALL FURNISH THE COUNTY ENGINEER WITH GRADE SHEETS AND STATIONS OF ALL HOUSE CONNECTIONS AND Y BRANCHES AND SHALL PROVIDE STAKES FOR THEM AT THEIR PROPER LOCATIONS WITH STATIONING PLAINLY MARKED	
	ANY CHANGE OF LOCATION SHALL BE REQUESTED IN WRITING BY THE OWNER OR HIS REPRESENTATIVE	

STOPPERS TO BE INSTALLED WITH JOINT COMPOUND BY MANUFACTURER AT HIS PLANT. SPECIFICATIONS - SECTION 33.48.  
 CONCRETE PAVEMENT TO BE CUT NOT LESS THAN 2 INCHES IN DEPTH WITH CONCRETE SAW. SPECIFICATIONS - SECTION 55.  
 INSTALL WIRE TAGS PER SPECIFICATIONS - SEC. 48

APPROVAL OF THIS PLAN BY THE COUNTY OF LOS ANGELES DOES NOT CONSTITUTE A REPRESENTATION AS TO THE ACCURACY OF THE LOCATION OF, OR THE EXISTENCE OR NON-EXISTENCE OF, ANY UNDERGROUND UTILITY, PIPE OR STRUCTURE WITHIN THE LIMITS OF THIS PROJECT. (THIS NOTE APPLIES TO ALL SHEETS)



REVISION CHECK - R.L. Smolen 7-6-52  
 Checked 10-7-52 (Signature)  
 OFFICE OF COUNTY ENGINEER REG. C.E. NO. 6414

PROFILE ALIGNMENT AND GRADE OF  
**SANITARY SEWERS**  
 TO BE CONSTRUCTED IN  
 TRACT No 17861  
**GUNN AVENUE**  
 BETWEEN 753' AND 1300' NORTH OF MULBERRY DR  
**MINA AVENUE**  
 BE TWEEN OVAL DRIVE AND DUNTON DRIVE  
**DUNTON DRIVE**  
 BETWEEN 372' EAST OF LANETT AVE. TO MINA AVENUE  
**OVAl DRIVE**  
 BETWEEN 362' EAST OF LANETT AVE TO MINA AVENUE  
**MISGEE DRIVE**  
 BETWEEN 353' AND 399' EAST OF LANETT AVENUE

PRIVATE CONTRACT NO. 2152  
 W. S. 34  
 SHEET 1 OF 1 SHEETS  
 SCALE: VERT. 1"=4'  
 HORIZ. 1"=40'

APRIL 1952  
 PREPARED IN THE OFFICES OF  
**KEMMERER ENG. CO.**  
 BY: *A.H. Law*  
 REG. C.E. NO. 1281

FOR LEGEND SEE PLAN NO. S-4104

NOTE: GRADES TO WHICH THIS IMPROVEMENT IS TO BE CONSTRUCTED ARE SHOWN ON PLANS AND PROFILES. GRADE POINTS FOR TOP OF CURB, CENTER LINE OF STREET OR CENTER LINE OF ALLEY ARE SHOWN BY CIRCLES ON PROFILES. AT ALL POINTS BETWEEN DESIGNATED POINTS THE GRADE SHALL BE ESTABLISHED SO AS TO CONFORM TO A STRAIGHT LINE DRAWN BETWEEN SAID DESIGNATED POINTS.  
 ELEVATIONS ARE IN FEET ABOVE U. S. G. DATUM OR MEAN SEA LEVEL.  
 THIS DRAWING AND THE DATA HEREON ARE HEREBY MADE A PART OF THE SPECIFICATIONS. WORK SHALL BE CONSTRUCTED ACCORDING TO SPECIFICATIONS ON FILE IN THE OFFICE OF THE COUNTY ENGINEER AND SHALL BE PROSECUTED ONLY IN THE PRESENCE OF THE COUNTY ENGINEER. BEFORE WORK CAN BE STARTED, THE CONTRACTOR MUST OBTAIN A PERMIT TO EXCAVATE IN COUNTY STREETS FROM THE L. A. COUNTY ROAD DEPT. 108 W. 1<sup>ST</sup> FLOOR, LOS ANGELES AND MAKE A DEPOSIT WITH THE COUNTY ENGINEER ROOM 324 AT 108 W. 1<sup>ST</sup> STREET, SUFFICIENT TO COVER THE COST OF CONSTRUCTION INSPECTION AND RECORD PLANS.  
 IF WORK IS TO BE DONE IN A STATE HIGHWAY, A PERMIT MUST BE OBTAINED FROM THE STATE OF CALIFORNIA, DIVISION OF HIGHWAYS, 808 STATE BUILDING, AFTER MAKING THE DEPOSIT WITH THE COUNTY ENGINEER.

COUNTY OF LOS ANGELES, CALIFORNIA  
 WILLIAM J. FOX, County Engineer  
 APPROVED: *A.H. Law*  
 CHIEF DESIGNER  
 APPROVED BY: *A.H. Law* OFFICE ENGINEER  
 COUNTY ENGINEER  
 CHECKED BY: *Richard E. Kellogg*  
 OFFICE OF COUNTY ENGINEER, REG. C.E. NO. 7669

108  
 16661  
 407 30-33  
 INDEX MAP  
 TR. NO. 17861  
 SCALE 1"=400'  
 PC. 2152 J.N. 4294  
 BC 5125  
 57  
 52  
 112





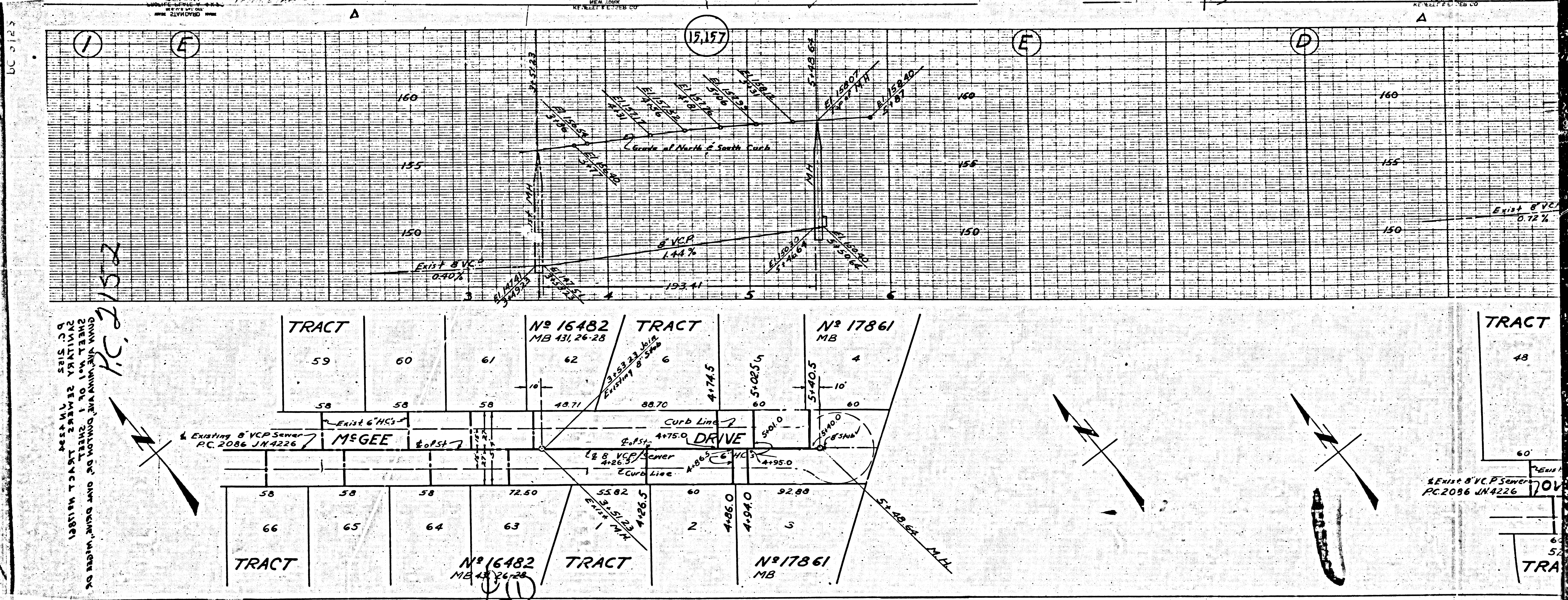












SEE SHEET 2152  
 SEE SHEET 2153  
 SEE SHEET 2154  
 SEE SHEET 2155  
 SEE SHEET 2156  
 SEE SHEET 2157  
 SEE SHEET 2158  
 SEE SHEET 2159  
 SEE SHEET 2160  
 SEE SHEET 2161  
 SEE SHEET 2162  
 SEE SHEET 2163  
 SEE SHEET 2164  
 SEE SHEET 2165  
 SEE SHEET 2166  
 SEE SHEET 2167  
 SEE SHEET 2168  
 SEE SHEET 2169  
 SEE SHEET 2170  
 SEE SHEET 2171  
 SEE SHEET 2172  
 SEE SHEET 2173  
 SEE SHEET 2174  
 SEE SHEET 2175  
 SEE SHEET 2176  
 SEE SHEET 2177  
 SEE SHEET 2178  
 SEE SHEET 2179  
 SEE SHEET 2180  
 SEE SHEET 2181  
 SEE SHEET 2182  
 SEE SHEET 2183  
 SEE SHEET 2184  
 SEE SHEET 2185  
 SEE SHEET 2186  
 SEE SHEET 2187  
 SEE SHEET 2188  
 SEE SHEET 2189  
 SEE SHEET 2190  
 SEE SHEET 2191  
 SEE SHEET 2192  
 SEE SHEET 2193  
 SEE SHEET 2194  
 SEE SHEET 2195  
 SEE SHEET 2196  
 SEE SHEET 2197  
 SEE SHEET 2198  
 SEE SHEET 2199  
 SEE SHEET 2200

Exist 8" V.C.P. Sewer  
 P.C. 2086 JN 4226