

15,383

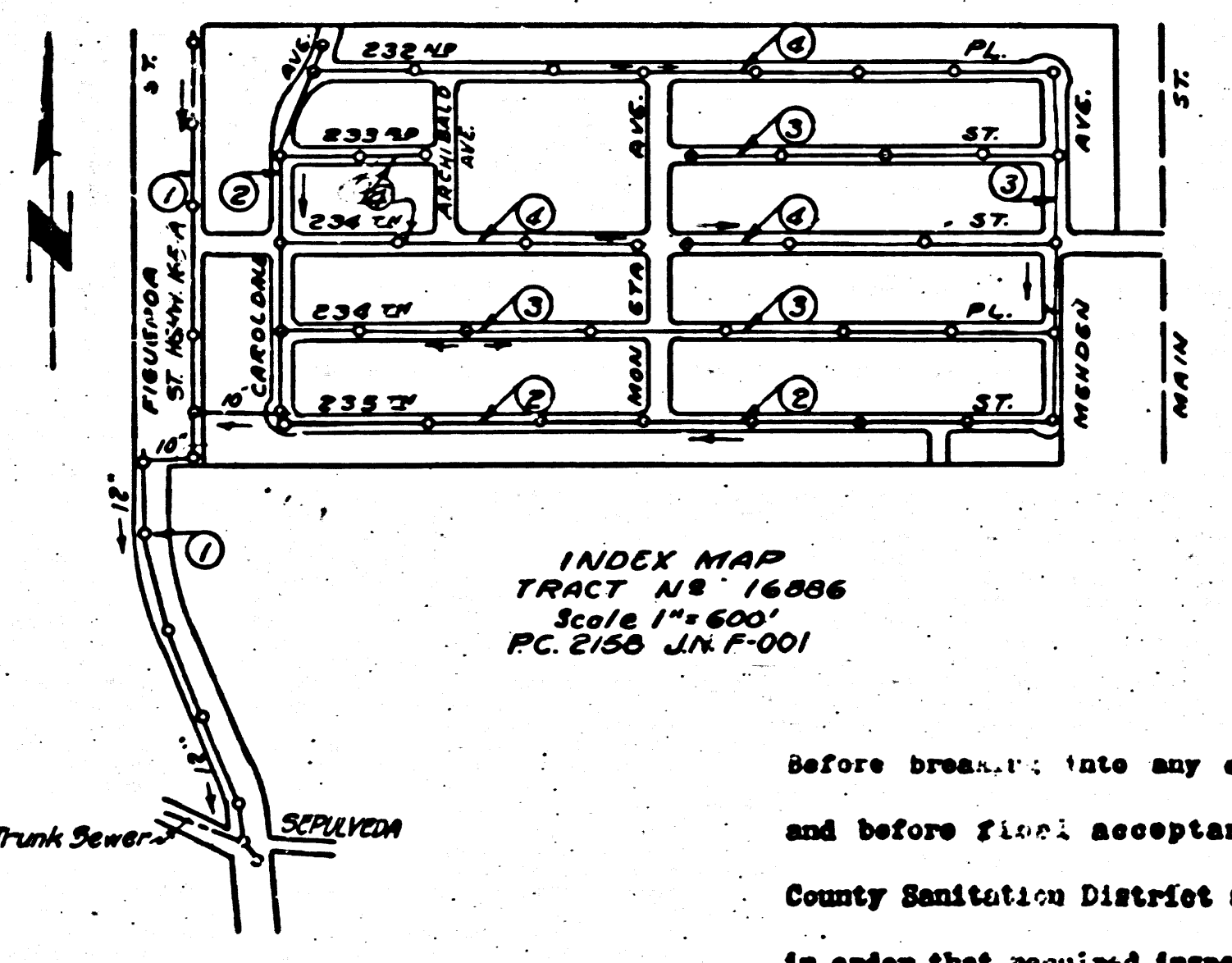
LOMITA

B.M. #30 L.G. 652-4 Elev. 3376
C.M. in North Corner of Building - 1/4
East of BCR @ N.E. Cor. Main St.

- NOTE:
THE REPRESENTATIVE OF THE COUNTY ENGINEER WILL SURVEY OR
LAYOUT AND RECOVER OF THE WORKS.
THE OWNER OR HIS AUTHORIZED REPRESENTATIVE SHALL FURNISH
THE COUNTY ENGINEER WITH GRADE SHEETS AND STATIONS FOR
ALL EXISTING FOUNDATIONS AND MANHOLES AND SHALL PROVIDE
STAKES FOR SHAL AT THEIR PROPER LOCATIONS WITH STATIONING
PLANS, REPER, AND CHANGE OF LOCATION SHALL BE REQUESTED
IN WRITING BY THE OWNER OR HIS REPRESENTATIVE.
NO REVISIONS SHALL BE MADE IN THESE PLANS WITHOUT APPROVAL
OF THE COUNTY ENGINEER.
1. THE STANDARD SPECIFICATIONS AND COVER, SHALL, EXCEPT AS NOTED
 2. THE STANDARD SPECIFICATIONS SHALL APPLY TO THIS PROJECT.
 3. THE STANDARD SPECIFICATIONS SHALL APPLY TO THIS PROJECT.
 4. RETURNED TO THE COUNTY ENGINEER FOR APPROVAL.
 5. THE STANDARD SPECIFICATIONS SHALL APPLY TO THIS PROJECT.
 6. THE STANDARD SPECIFICATIONS SHALL APPLY TO THIS PROJECT.
 7. THE STANDARD SPECIFICATIONS SHALL APPLY TO THIS PROJECT.
 8. THE STANDARD SPECIFICATIONS SHALL APPLY TO THIS PROJECT.
 9. STOPPERS TO BE INSTALLED WITH JOINT COMPOUND BY MANUFACTURER AT HIS PLANT, SPECS. SEC. 53.4.6.
 10. CONCRETE PAVEMENT TO BE CUT NOT LESS THAN 2" DEPTH WITH CONCRETE SAW SPECS. SEC. 56.6.6.
 11. CONSTRUCTION IN STATE HIGHWAY SHALL CONFORM WITH STATE HIGHWAY DEPT. PERMIT.
 12. INSTALL WIRE AND TAGS PER SPECS SEC. 4.5

PROFILE, ALIGNMENT AND GRADE OF
SANITARY SEWERS
TO BE CONSTRUCTED IN
FIGUEROA STREET
BETWEEN SEPULVEDA BLVD. AND NLY. TRACT LINE
TRACT # 16886

PRIVATE CONTRACT NO. 2158
W. S. 25
SHEET 1 OF 4 SHEETS
APRIL 1952
PREPARED IN THE OFFICES OF
ENGINEERING SERVICE CORPORATION



ENGINEERING SERVICE CORPORATION			
1127 W WASHINGTON BLVD.			
LOS ANGELES 15 CALIF PR. 7281			
REVISIONS		TRACED BY <i>W.S.</i>	
		DES'G'D BY <i>K.S.</i>	
		CK'D BY <i>W.S.</i>	
		SUBMITTED BY <i>W.S.</i>	
SUB STRUCTURES CK'D	W. S. NO.	DATE	SCALE
	6291-3	APRIL 1952	AS SHOWN

FOR LEG'ND
SEE PLAN NO. S-4-57

NOTE:
GRADES TO WHICH THIS IMPROVEMENT IS TO BE CONSTRUCTED ARE SHOWN ON PLANS AND PROFILES.
GRADE POINTS FOR TOP OF CURB, CENTER LINE OF STREETS OR CENTER LINE OF ALLEY ARE SHOWN BY
CIRCLES ON PROFILES. AT ALL POINTS BETWEEN DESIGNATED POINTS THE GRADE SHALL BE ESTABLISHED
SO AS TO CONFORM TO A STRAIGHT LINE DRAWN BETWEEN THE DESIGNATED POINTS.
ELEVATIONS ARE IN FEET ABOVE U. S. G. S. DATUM 32 MEAN SEA LEVEL.
THIS DRAWING AND THE DATA HEREON ARE HEREBY MADE A PART OF THE SPECIFICATIONS.
WORK SHALL BE CONDUCTED ACCORDING TO SPECIFICATIONS ON FILE IN THE OFFICE OF THE COUNTY
ENGINEER AND SHALL BE PROTECTED ONLY IN THE PRESENCE OF THE COUNTY ENGINEER.
BEFORE WORK CAN BE STARTED THE CONTRACTOR MUST OBTAIN A PERMIT TO EXCAVATE IN COUNTY
STREETS FROM THE L. A. COUNTY ROAD DEPT. 211 50 MAIN ST. ALSO MAKE A DEPOSIT WITH THE COUNTY
ENGINEER, 222 COUNTY ENGINEERING BUILDING SUFFICIENT TO COVER THE COST OF CONSTRUCTION IN-
SPECTION AND RECORD PLANS.
APPROVAL OF THIS PLAN BY THE COUNTY OF LOS ANGELES DOES NOT CONSTITUTE A REPRESENTATION
AS TO THE ACCURACY OF THE DATA HEREON OR THE BEST INTERESTS OR NON-INTERFERENCE OF ANY UTILITIES,
OR PUBLIC UTILITY, PIPE, OR STRUCTURE WITHIN THE LIMITS OF THE PROJECT. THIS NOTE APPLIES TO ALL SHEETS.
COUNTY OF LOS ANGELES, CALIFORNIA

WILLIAM J. FOX
COUNTY ENGINEER

A. M. RAWN
CHIEF ENGINEER OF COUNTY
SANITATION DISTRICT NO. 8

APPROVED BY *W.S.* APRIL 1952
A.M.E. CHIEF DEPUTY

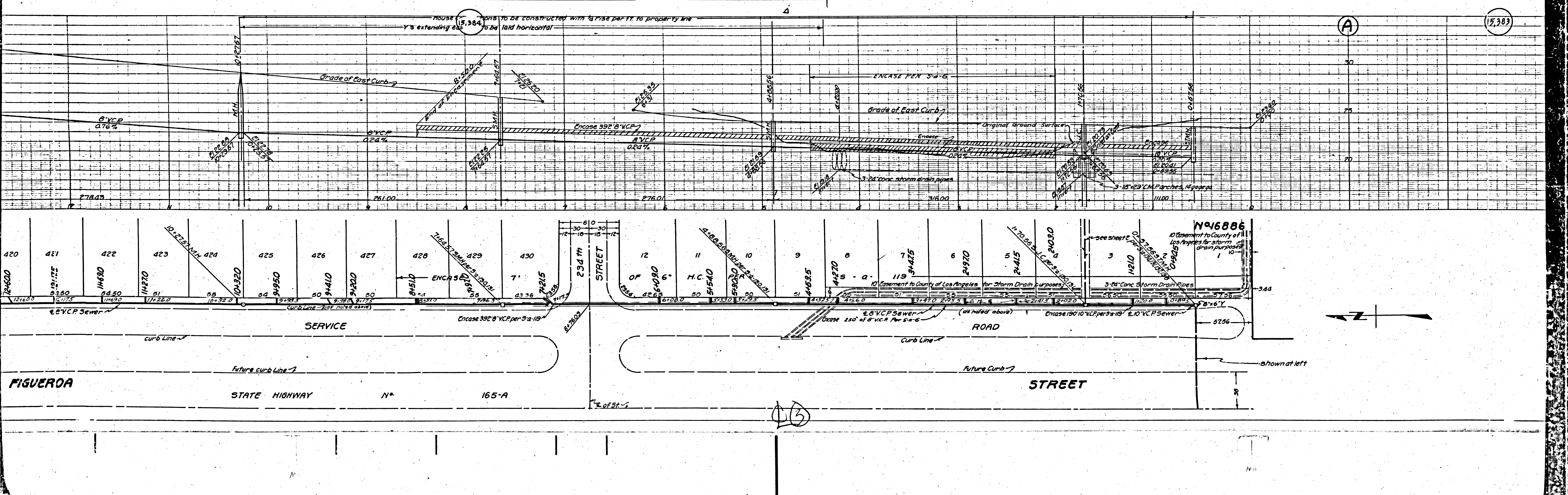
CHECKED BY *W.S.* APRIL 1952
OFFICE OF COUNTY ENGINEER
R.M.C. & NO. 6412

SANITARY SEWERS - FIGUEROA ST. TRACT 16886

JUL 2 1952

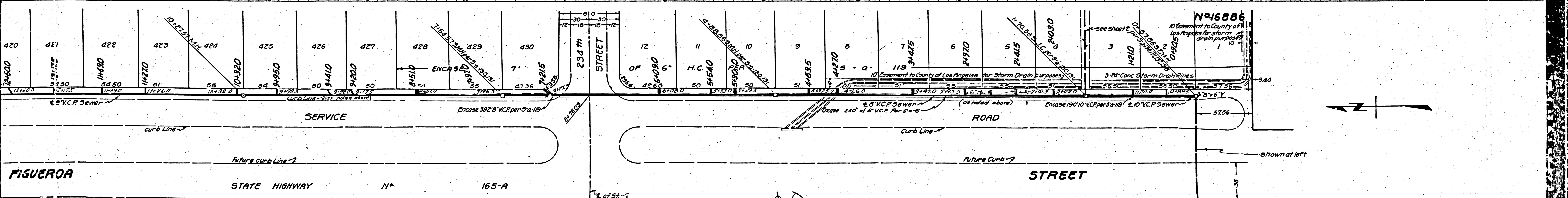
123

20



house 15,384 to be constructed with a rise per ft. to property line
 Y's extending east to be laid horizontal

(A) 15,383



FIGUEROA STATE HIGHWAY No. 165-A

STREET

ROAD

Future curb line

shown at left

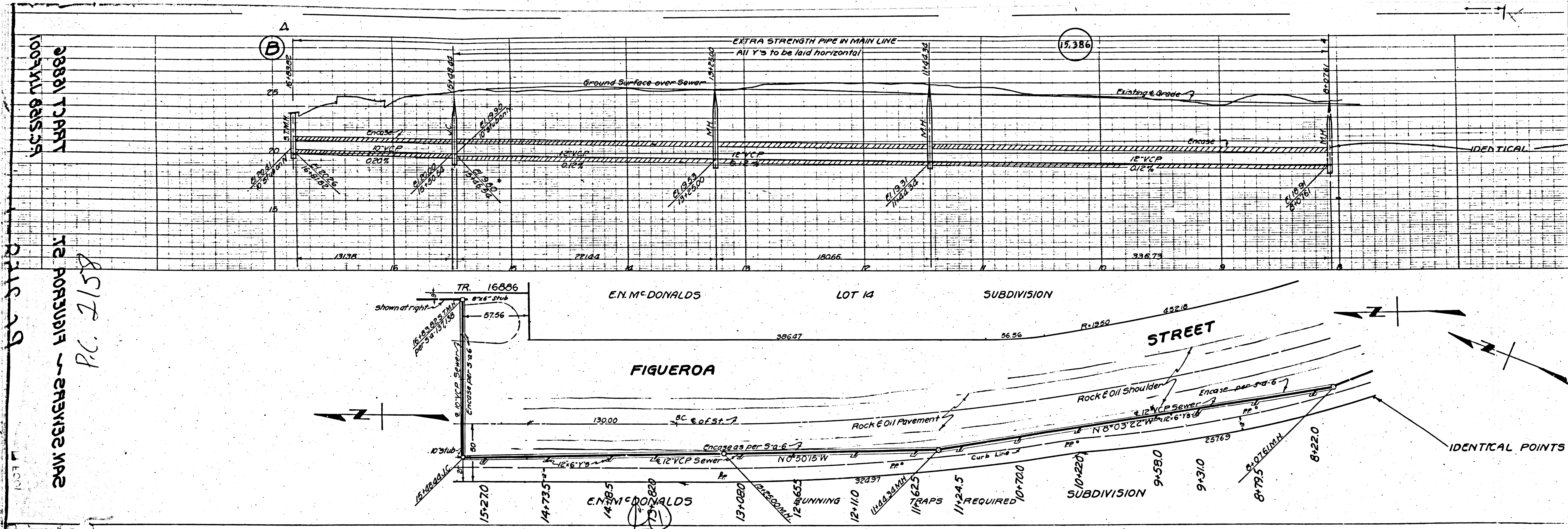
13

No. 16886

10 easement to County of Los Angeles for storm drain purposes

see sheet

shown at left



28831 PART
100'x111' 6\"/>

2116 29
 12 PORTUBIA
 287132 MAP
 P.C. 2158

1531

1531

1531

1531

1531

1531

1531

1531

1531

1531

1531

1531

1531

1531

1531

1531

1531

1531

1531

1531

1531

1531

1531

1531

1531

1531

1531

1531

1531

1531

1531

1531

1531

1531

1531

1531

1531

1531

1531

1531

1531

1531

1531

1531

1531

1531

1531

1531

1531

1531

1531

1531

1531

1531

1531

1531

1531

1531

1531

1531

1531

1531

1531

1531

1531

1531

1531

1531

1531

1531

1531

1531

1531

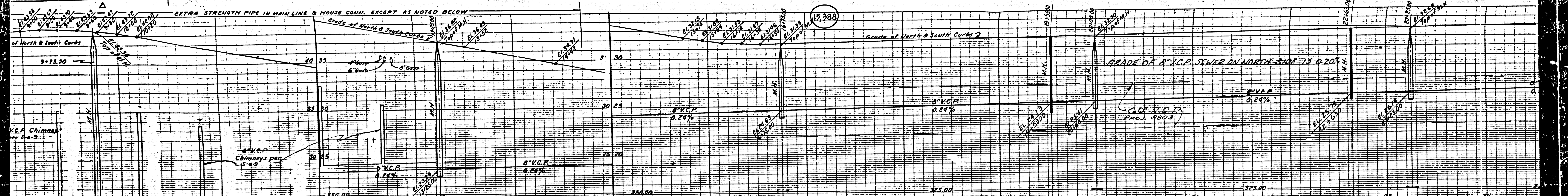
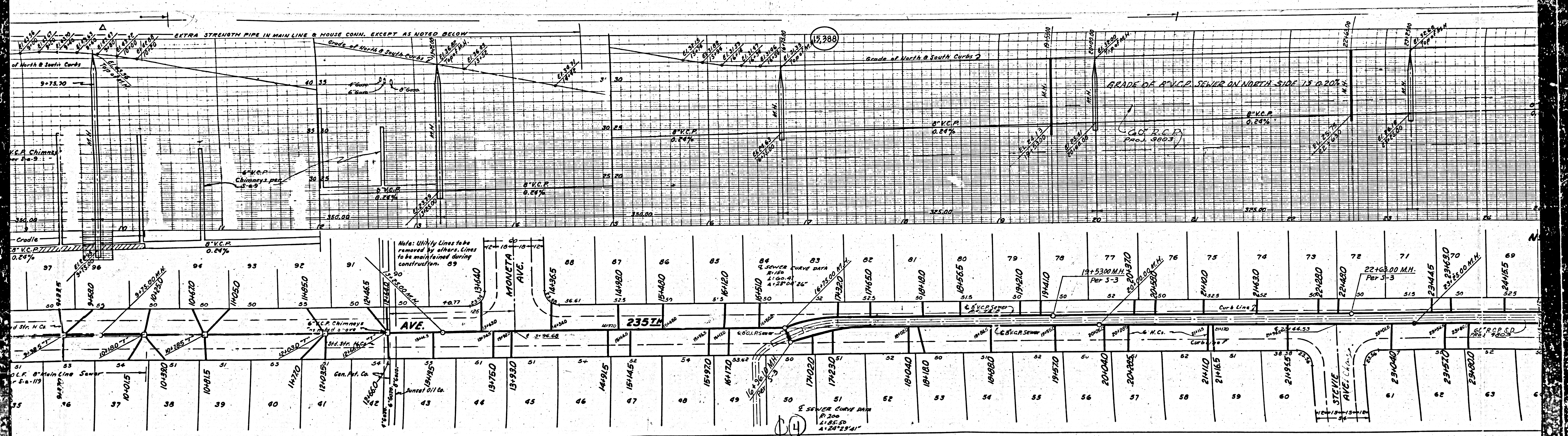
1531

1531

1531

1531

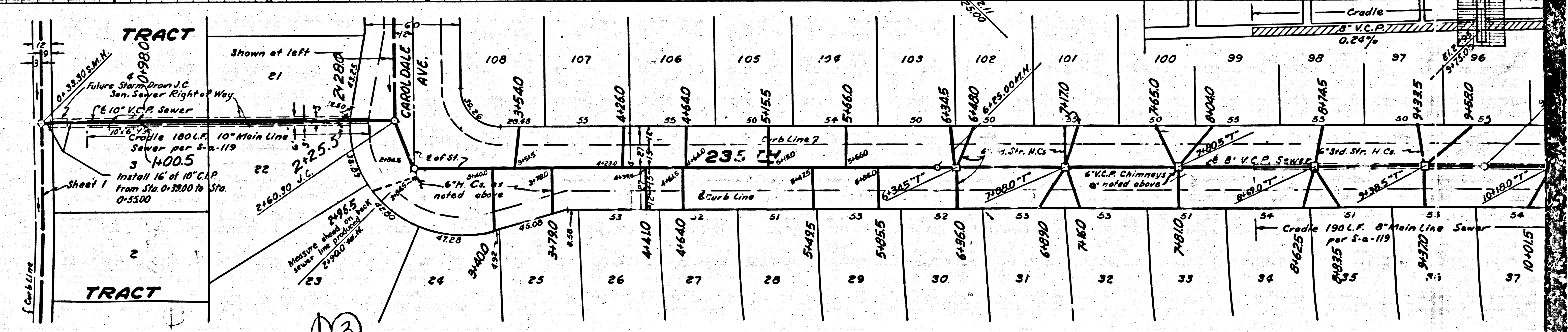
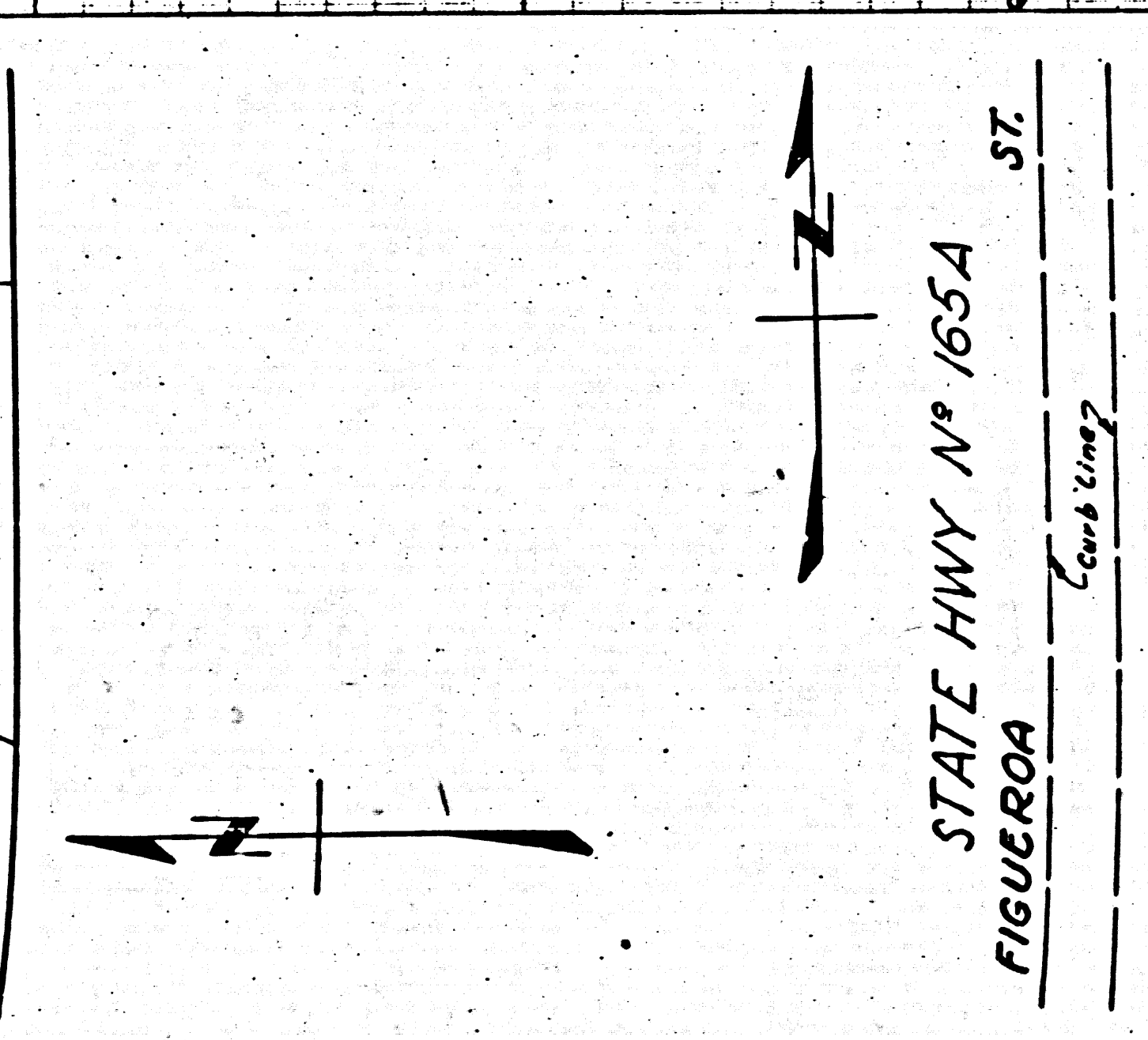
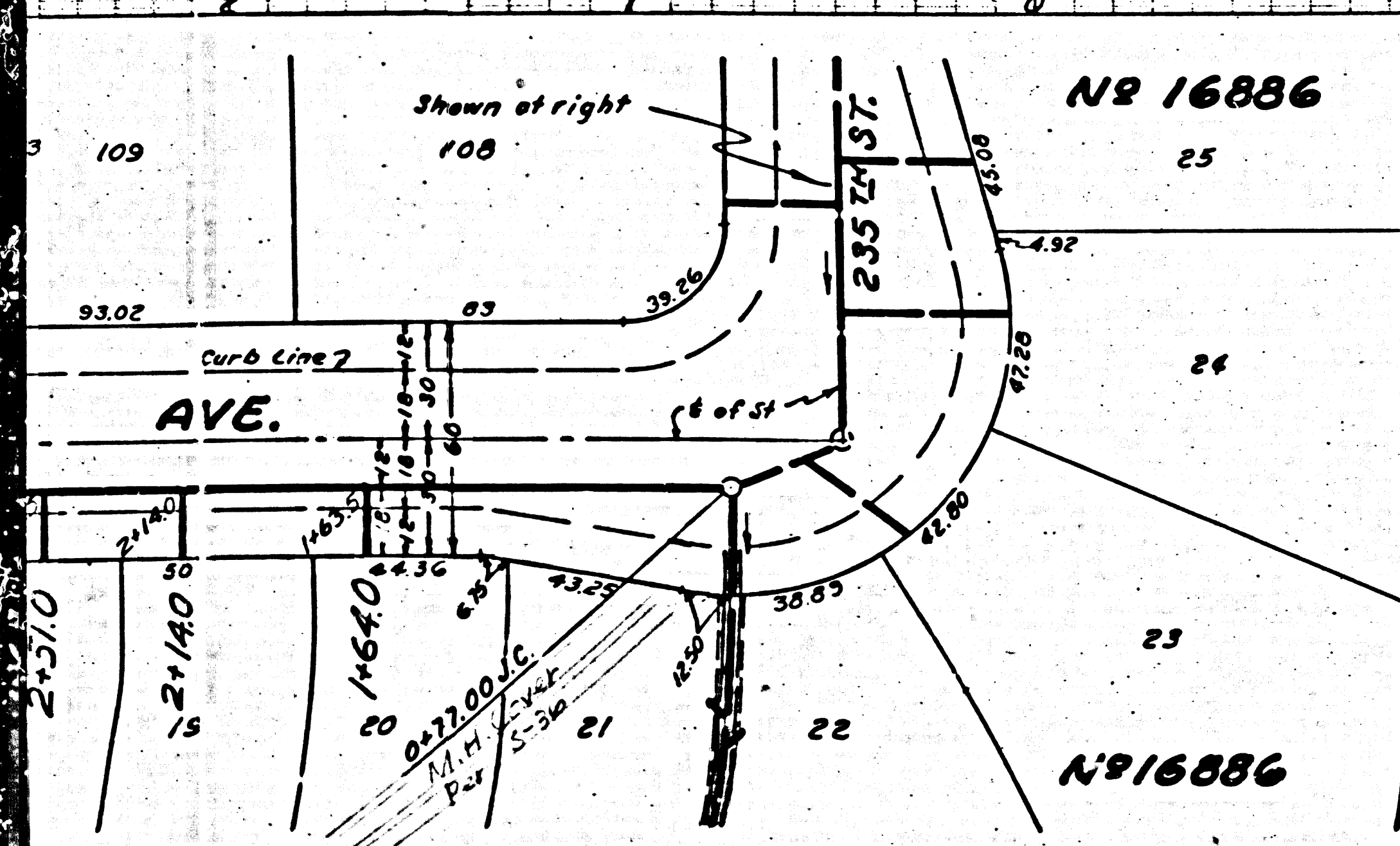
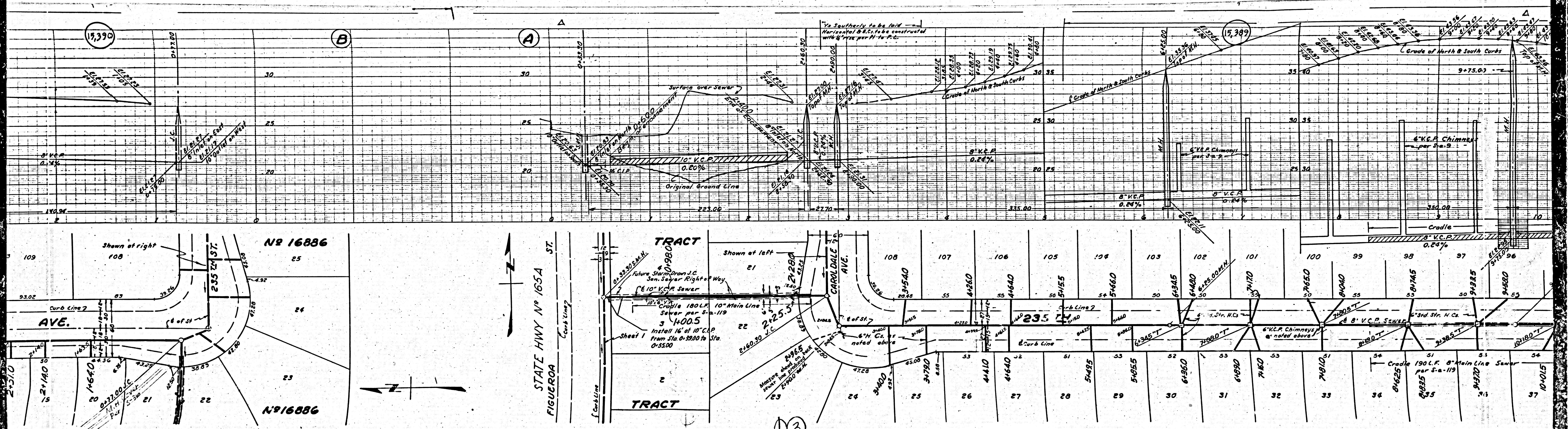
1531

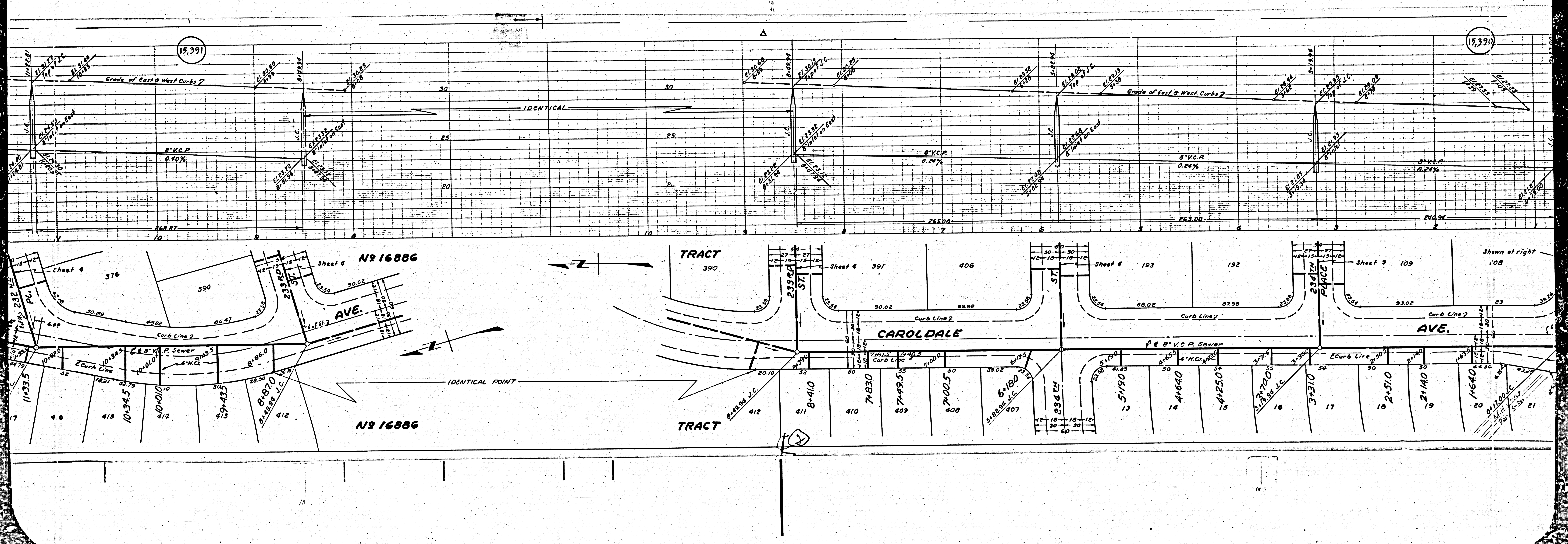


Note: Utility Lines to be removed by others. Lines to be maintained during construction. 89

35	36	37	38	39	40	41	42	43	44	45	46	47	48	49	50	51	52	53	54	55	56	57	58	59	60	61	62	63	64	65	66	67	68	69	70	71	72	73	74	75	76	77	78	79	80	81	82	83	84	85	86	87	88	89	90	91	92	93	94	95	96	97	98	99	100
----	----	----	----	----	----	----	----	----	----	----	----	----	----	----	----	----	----	----	----	----	----	----	----	----	----	----	----	----	----	----	----	----	----	----	----	----	----	----	----	----	----	----	----	----	----	----	----	----	----	----	----	----	----	----	----	----	----	----	----	----	----	----	----	----	-----

SEWER CURVE DATA
 R=200
 Δ=185.00
 Δ=20°29'41"





15,391

15,390

IDENTICAL

IDENTICAL POINT

TRACT 390

TRACT 412

CAROLDALE

NS 16886

Sheet 4 NS 16886

AVE.

AVE.

Sheet 3 109

Shown at right 108

Sheet 4 376

Sheet 4 390

Sheet 4 391

Sheet 4 193

Sheet 4 192

Sheet 4 191

Sheet 4 190

Sheet 4 189

Sheet 4 188

Sheet 4 187

Sheet 4 186

Sheet 4 185

Sheet 4 184

Sheet 4 183

Sheet 4 182

Sheet 4 181

Sheet 4 180

Sheet 4 179

Sheet 4 178

Sheet 4 177

Sheet 4 176

Sheet 4 175

Sheet 4 174

Sheet 4 173

Sheet 4 172

Sheet 4 171

Sheet 4 170

Sheet 4 169

Sheet 4 168

Sheet 4 167

Sheet 4 166

Sheet 4 165

Sheet 4 164

Sheet 4 163

Sheet 4 162

Sheet 4 161

Sheet 4 160

Sheet 4 159

Sheet 4 158

Sheet 4 157

Sheet 4 156

Sheet 4 155

Sheet 4 154

Sheet 4 153

Sheet 4 152

Sheet 4 151

Sheet 4 150

Sheet 4 149

Sheet 4 148

Sheet 4 147

Sheet 4 146

Sheet 4 145

Sheet 4 144

Sheet 4 143

Sheet 4 142

Sheet 4 141

Sheet 4 140

Sheet 4 139

Sheet 4 138

Sheet 4 137

Sheet 4 136

Sheet 4 135

Sheet 4 134

Sheet 4 133

Sheet 4 132

Sheet 4 131

Sheet 4 130

Sheet 4 129

Sheet 4 128

Sheet 4 127

Sheet 4 126

Sheet 4 125

Sheet 4 124

Sheet 4 123

Sheet 4 122

Sheet 4 121

Sheet 4 120

Sheet 4 119

Sheet 4 118

Sheet 4 117

Sheet 4 116

Sheet 4 115

Sheet 4 114

Sheet 4 113

Sheet 4 112

Sheet 4 111

Sheet 4 110

Sheet 4 109

Sheet 4 108

Sheet 4 107

Sheet 4 106

Sheet 4 105

Sheet 4 104

Sheet 4 103

Sheet 4 102

Sheet 4 101

Sheet 4 100

Sheet 4 99

Sheet 4 98

Sheet 4 97

Sheet 4 96

Sheet 4 95

Sheet 4 94

Sheet 4 93

Sheet 4 92

Sheet 4 91

Sheet 4 90

Sheet 4 89

Sheet 4 88

Sheet 4 87

Sheet 4 86

Sheet 4 85

Sheet 4 84

Sheet 4 83

Sheet 4 82

Sheet 4 81

Sheet 4 80

Sheet 4 79

Sheet 4 78

Sheet 4 77

Sheet 4 76

Sheet 4 75

Sheet 4 74

Sheet 4 73

Sheet 4 72

Sheet 4 71

Sheet 4 70

Sheet 4 69

Sheet 4 68

Sheet 4 67

Sheet 4 66

Sheet 4 65

Sheet 4 64

Sheet 4 63

Sheet 4 62

Sheet 4 61

Sheet 4 60

Sheet 4 59

Sheet 4 58

Sheet 4 57

Sheet 4 56

Sheet 4 55

Sheet 4 54

Sheet 4 53

Sheet 4 52

Sheet 4 51

Sheet 4 50

Sheet 4 49

Sheet 4 48

Sheet 4 47

Sheet 4 46

Sheet 4 45

Sheet 4 44

Sheet 4 43

Sheet 4 42

Sheet 4 41

Sheet 4 40

Sheet 4 39

Sheet 4 38

Sheet 4 37

Sheet 4 36

Sheet 4 35

Sheet 4 34

Sheet 4 33

Sheet 4 32

Sheet 4 31

Sheet 4 30

Sheet 4 29

Sheet 4 28

Sheet 4 27

Sheet 4 26

Sheet 4 25

Sheet 4 24

Sheet 4 23

Sheet 4 22

Sheet 4 21

Sheet 4 20

Sheet 4 19

Sheet 4 18

Sheet 4 17

Sheet 4 16

Sheet 4 15

Sheet 4 14

Sheet 4 13

Sheet 4 12

Sheet 4 11

Sheet 4 10

Sheet 4 9

Sheet 4 8

Sheet 4 7

Sheet 4 6

Sheet 4 5

Sheet 4 4

Sheet 4 3

Sheet 4 2

Sheet 4 1

Sheet 4 0

Sheet 4 -1

Sheet 4 -2

Sheet 4 -3

Sheet 4 -4

Sheet 4 -5

Sheet 4 -6

Sheet 4 -7

Sheet 4 -8

Sheet 4 -9

Sheet 4 -10

Sheet 4 -11

Sheet 4 -12

Sheet 4 -13

Sheet 4 -14

Sheet 4 -15

Sheet 4 -16

Sheet 4 -17

Sheet 4 -18

Sheet 4 -19

Sheet 4 -20

Sheet 4 -21

Sheet 4 -22

Sheet 4 -23

Sheet 4 -24

Sheet 4 -25

Sheet 4 -26

Sheet 4 -27

Sheet 4 -28

Sheet 4 -29

Sheet 4 -30

Sheet 4 -31

Sheet 4 -32

Sheet 4 -33

Sheet 4 -34

Sheet 4 -35

Sheet 4 -36

Sheet 4 -37

Sheet 4 -38

Sheet 4 -39

Sheet 4 -40

Sheet 4 -41

Sheet 4 -42

Sheet 4 -43

Sheet 4 -44

Sheet 4 -45

Sheet 4 -46

Sheet 4 -47

Sheet 4 -48

Sheet 4 -49

Sheet 4 -50

Sheet 4 -51

Sheet 4 -52

Sheet 4 -53

Sheet 4 -54

Sheet 4 -55

Sheet 4 -56

Sheet 4 -57

Sheet 4 -58

Sheet 4 -59

Sheet 4 -60

Sheet 4 -61

Sheet 4 -62

Sheet 4 -63

Sheet 4 -64

Sheet 4 -65

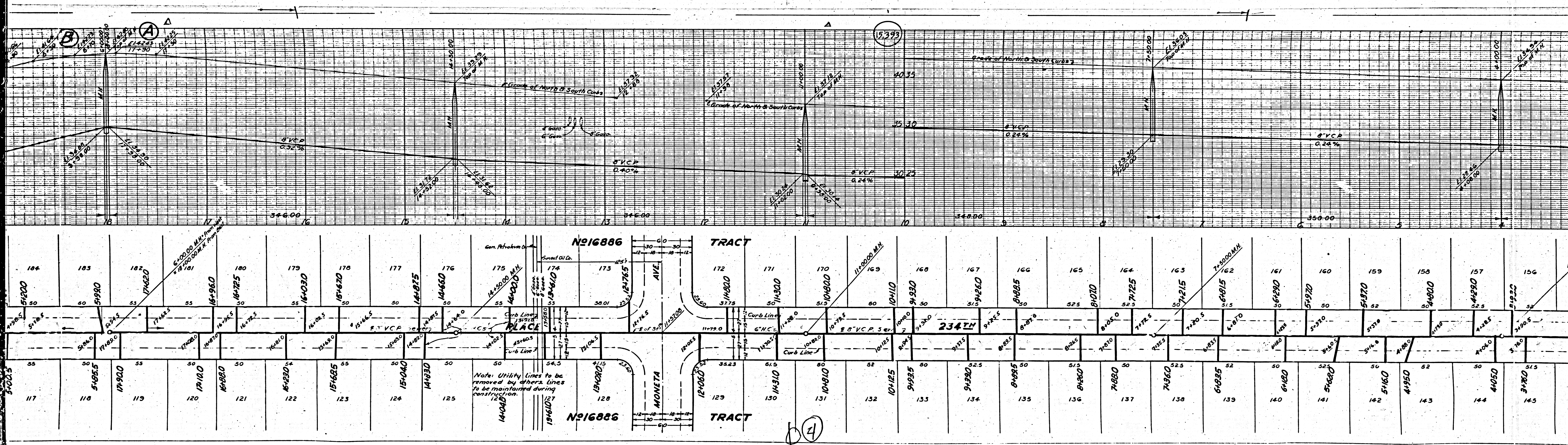
Sheet 4 -66

Sheet 4 -67

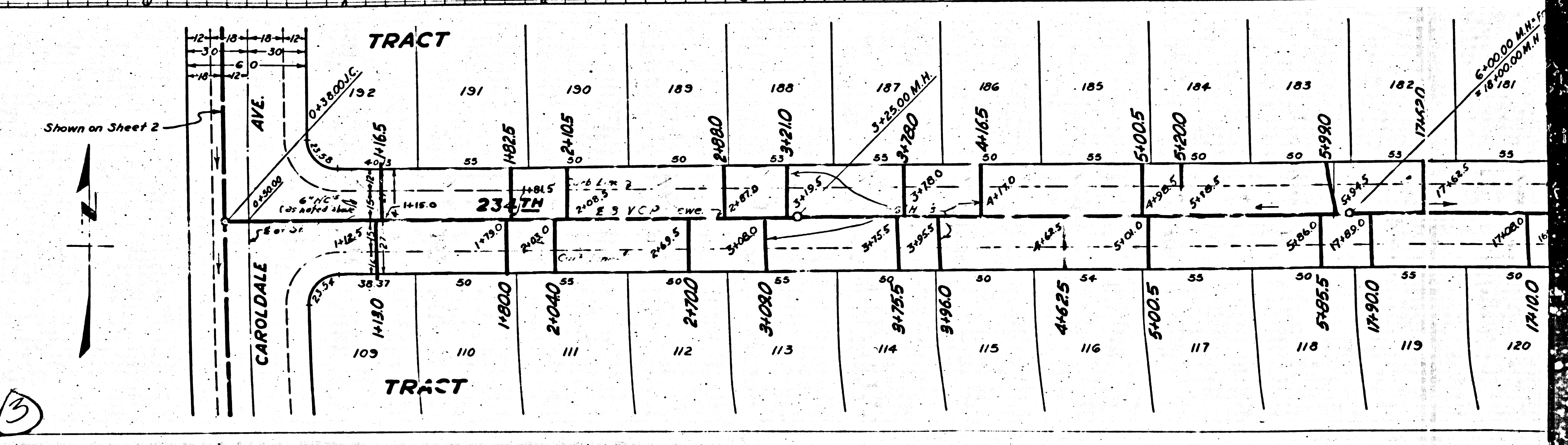
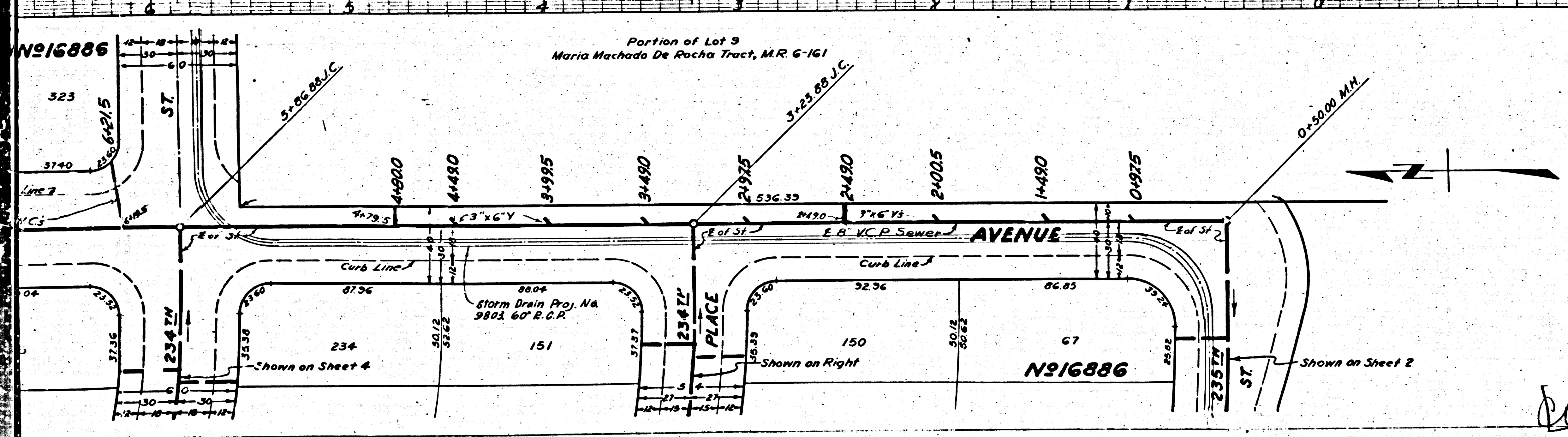
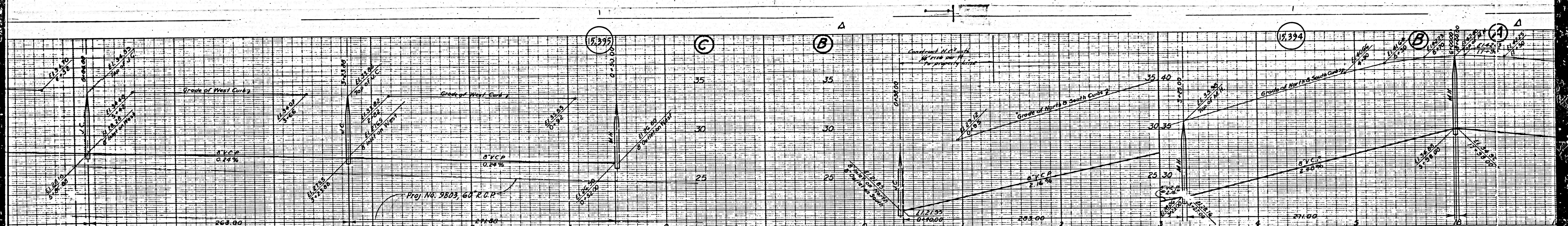
Sheet 4 -68

Sheet 4 -69

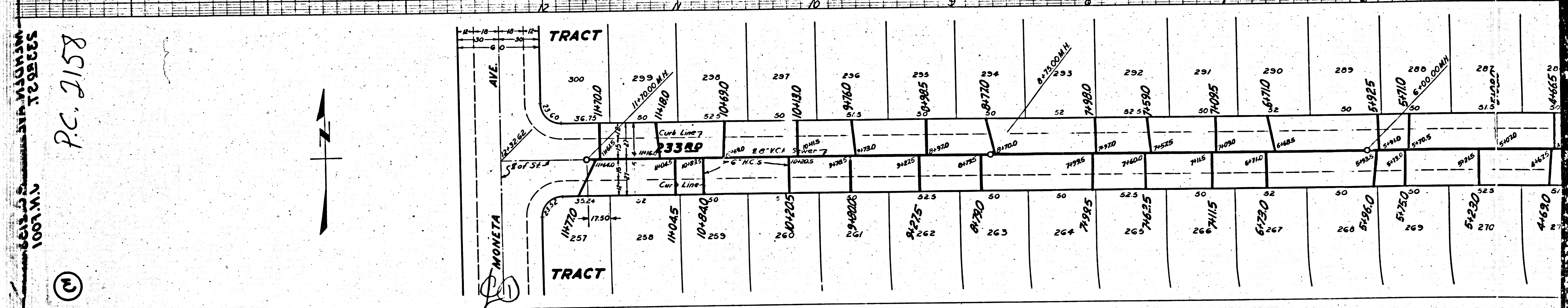
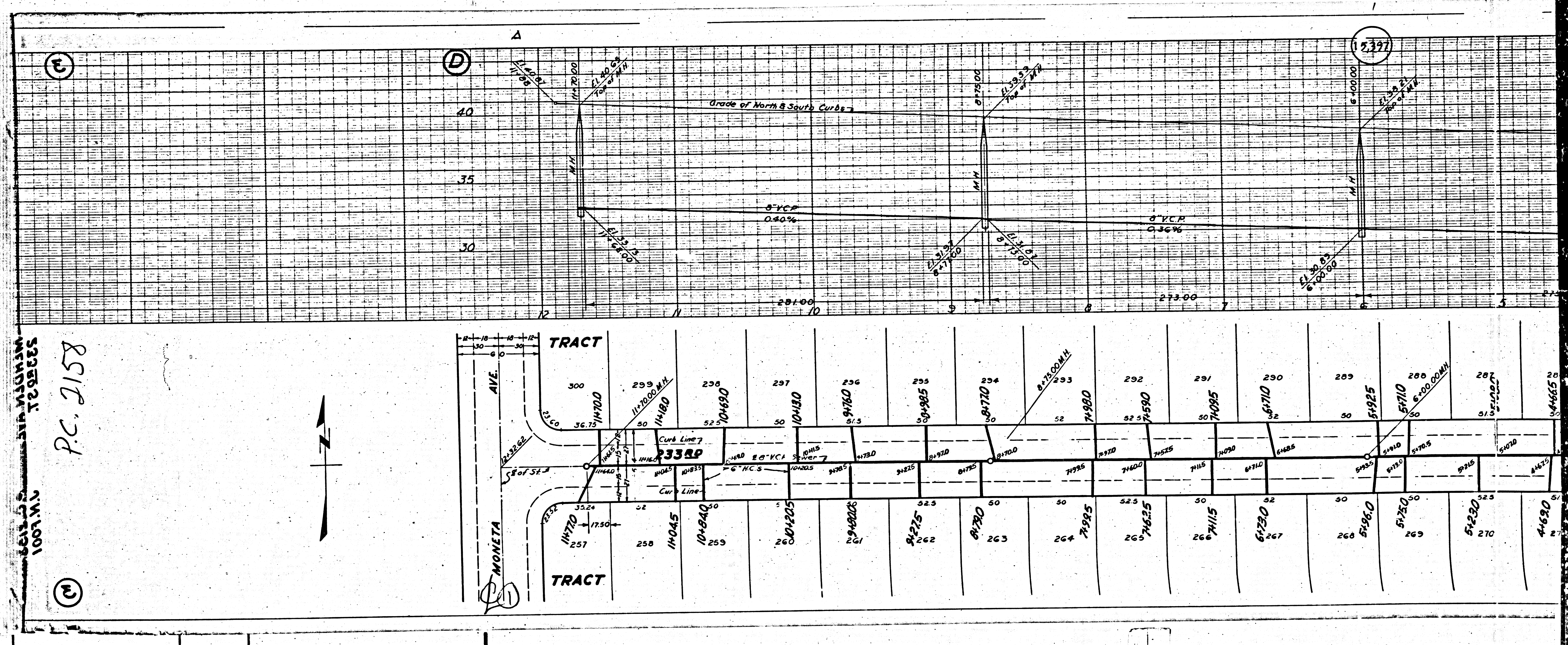
Sheet 4 -70



104	183	182	180	179	176	177	176	175	174	173	172	171	170	169	168	167	166	165	164	163	162	161	160	159	158	157	156
51200	51990	51960	51785	51680	51670	51675	51660	51650	51640	51635	51630	51625	51620	51615	51610	51605	51600	51595	51590	51585	51580	51575	51570	51565	51560	51555	51550
55	50	55	50	54	55	54	50	50	54.5	54.5	50	52	52	50	52.5	50	51.5	50	51.5	50	52	50	52	50	52	50	51.5
117	118	119	120	121	122	123	124	125	127	128	129	130	131	132	133	134	135	136	137	138	139	140	141	142	143	144	145



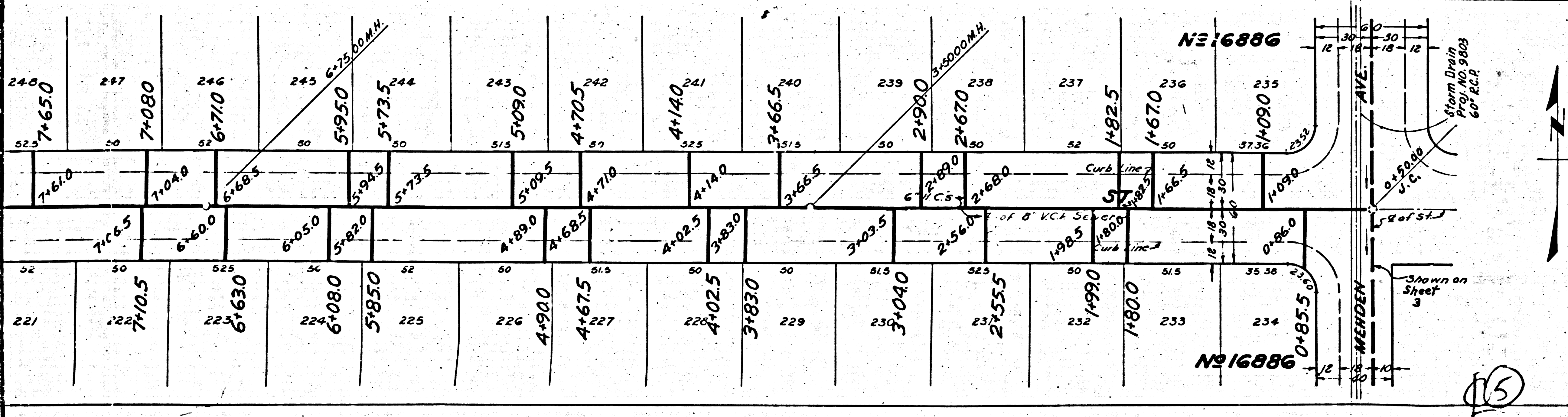
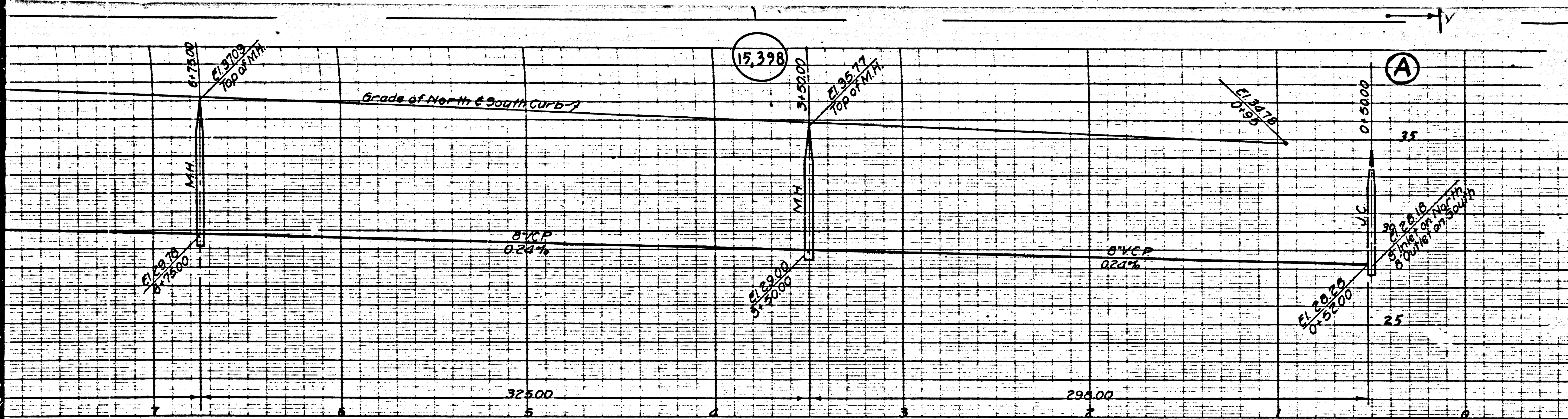
(3)



PC. 2158

1001 W.S.

2337



B.M. 30 I.O. 652-4 Elev. 38.76
 1/4" N North-Eb. of Gulf Ave. 18' E
 B.C.R. @ N.E. Cor. Main St.

PROFILE, ALIGNMENT AND GRADE OF
SANITARY SEWERS
 TO BE CONSTRUCTED IN
234th ST.
 BETWEEN MEHDEN AVE. AND CAROLDALE AVE.
232nd PL.
 BETWEEN MEHDEN AVE. AND CAROLDALE AVE.
233rd ST.
 BETWEEN ARCHIBALD AVE. AND CAROLDALE AVE.
 IN TRACT NO. 16886
 PRIVATE CONTRACT NO. 2158
 W. 520
 SHEET 4 OF 4 SHEETS

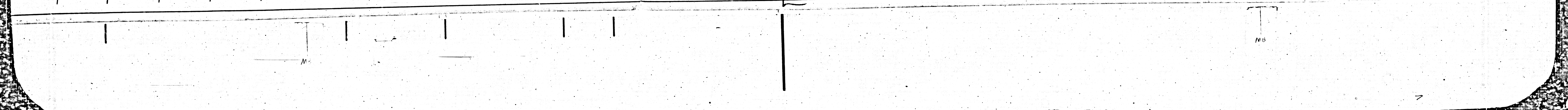
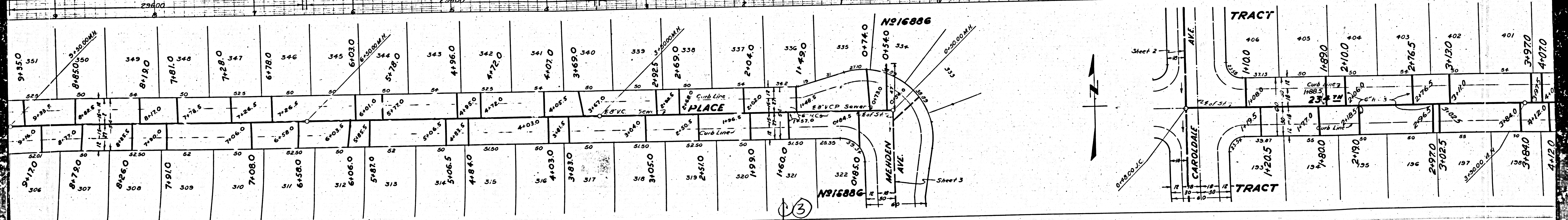
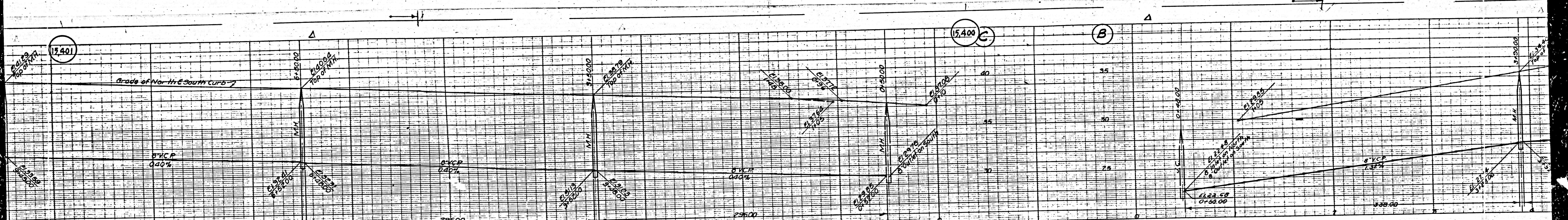
SCALE VERT. 1" = 4'
 HORIZ. 1" = 40'
 APRIL 1952
 PREPARED IN THE OFFICES OF
 ENGINEERING SERVICE CORPORATION
 BY *C. F. Keene*
 REG. C. E. NO. 1492

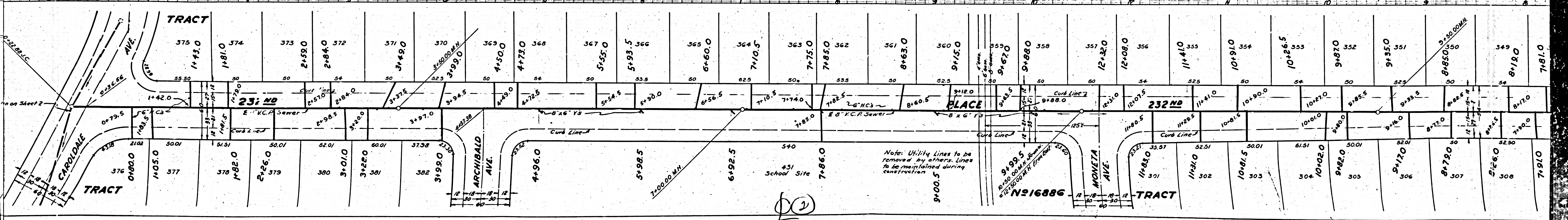
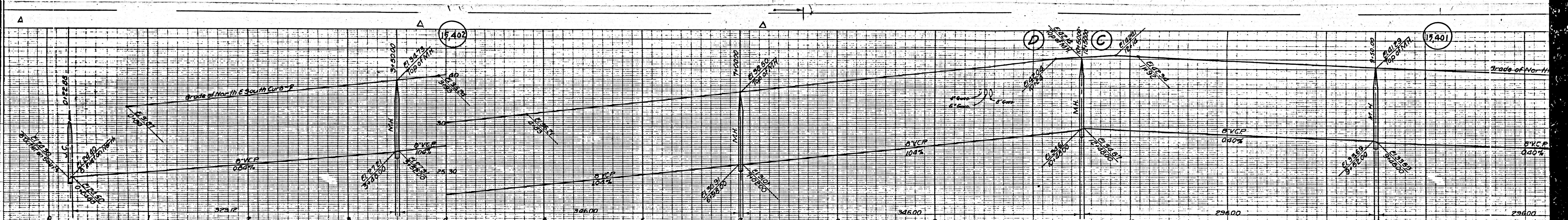
ENGINEERING SERVICE CORPORATION
 1127 W. WASHINGTON BOULEVARD
 LOS ANGELES 15, CALIF. PR-7281
 Drawn by *K.S.* Approved by *[Signature]*
 Date APRIL 1952 No. L.L.B.
 W.D. 62913 F.R. I.L.B.

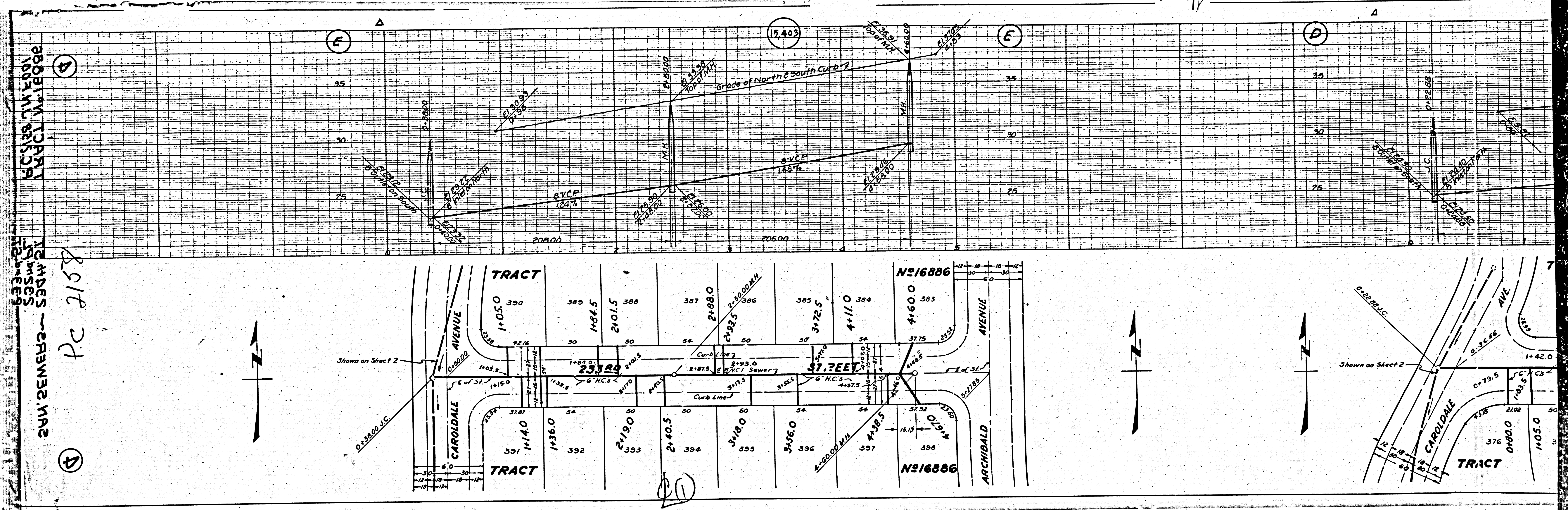
Before breaking into any existing structure
 and before final acceptance of this work,
 County Sanitation District should be notified
 in order that required inspection may be made.

COUNTY OF LOS ANGELES, CALIFORNIA
 WILLIAM J. FOX COUNTY ENGINEER
 APPROVED BY *[Signature]* APRRVED BY *[Signature]*
 ASST. CHIEF DEPUTY CHIEF ENGINEER
 CHECKED BY *[Signature]* OFFICE OF COUNTY ENGINEER
 18th C. 2nd 6742

ST 28 - 4
 TRACT No. 16886
 JUL 2 1952
 COUNTY OF LOS ANGELES



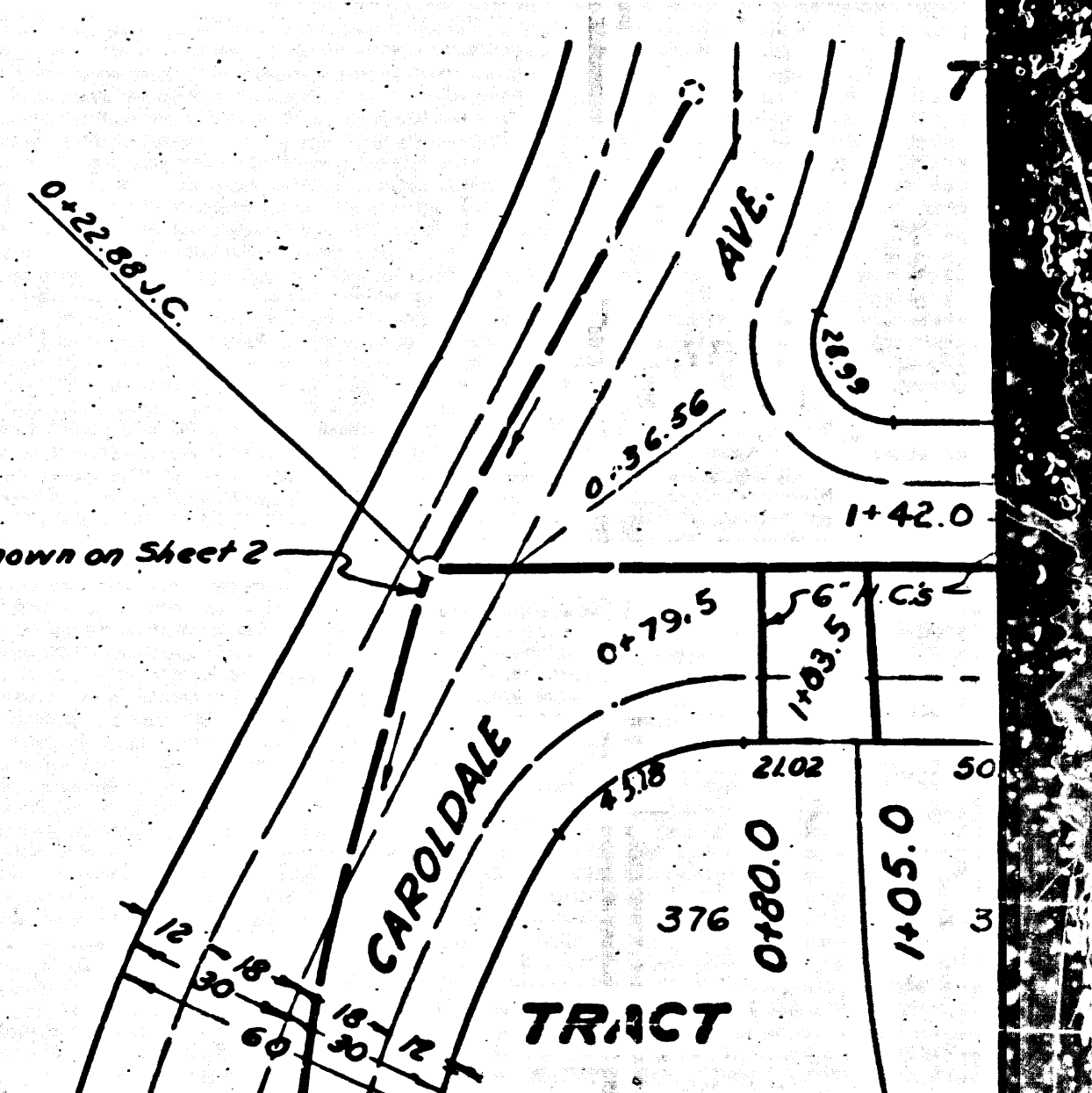




PC 2158
2212 2158

D

TRACT
ADJACENT
TO
2212 2158



TRACT