

BELLFLOWER

(14,986)

D.M.S.Y. #962 Pg. 376 E17556
 E. 4 Ft. Near S.W. Edge of North Strip
 Concrete Driveway 50 ft. East of E.
 Woodruff To House # 15304

1. Use Standard Manhole Frames and Covers, 4'-0" x 17"
2. Use Standard Strength Pipe
3. Use Cement Mortar for all V.C.P. Joints
4. Resurface all trench within paved area to meet L.R.
5. County Road Dept. requirements
6. Erect a four foot of sewer at points of interference with poles as per S-101
7. All Structures to be constructed with invert of Property Line 3 feet below Curb Grade except as noted.
8. All Structures shall be Brick Sewer Structures 3'-0" x 10'8" stoppers to be installed with joint compound by manufacturer at his plant. Spec. See 53, 54.
9. Concrete pavement to be at least 2" in depth with Concrete Jaw. Specs. See 63

Provide stakes on the property line or the property line produced, at right angles to the Sewer Line at the 4' of each manhole.

No representative of the County Engineer will survey or lay out any portion of the work. The owner or his authorized representative shall furnish the County Engineer with Grade Sheets and Stationing for all new lines and existing lines. The stationing of these lines shall be clearly marked. Any change of location shall be requested in writing by the owner or his representative. No revisions shall be made in these Plans without approval of the County Engineer.

**PROFILE ALIGNMENT AND GRADE OF
 SANITARY SEWERS
 TO BE CONSTRUCTED IN
 CARFAX AVE.
 BETWEEN THE SOUTHERLY LINE OF TRACT No. 17915 & MAPLEDALE ST.**

**PRIVATE CONTRACT No. 2166
 W.J.33
 ONE SHEET**

Scale: Vert. 1" = 4'
 Horiz. 1" = 40'

APRIL 1952

**PREPARED IN THE OFFICES OF
 JONES & GILBERT**

BY **Paul Jones**
 Reg. C.E. No. 2371

FOR LEGEND
 See Plan No. S-0-04

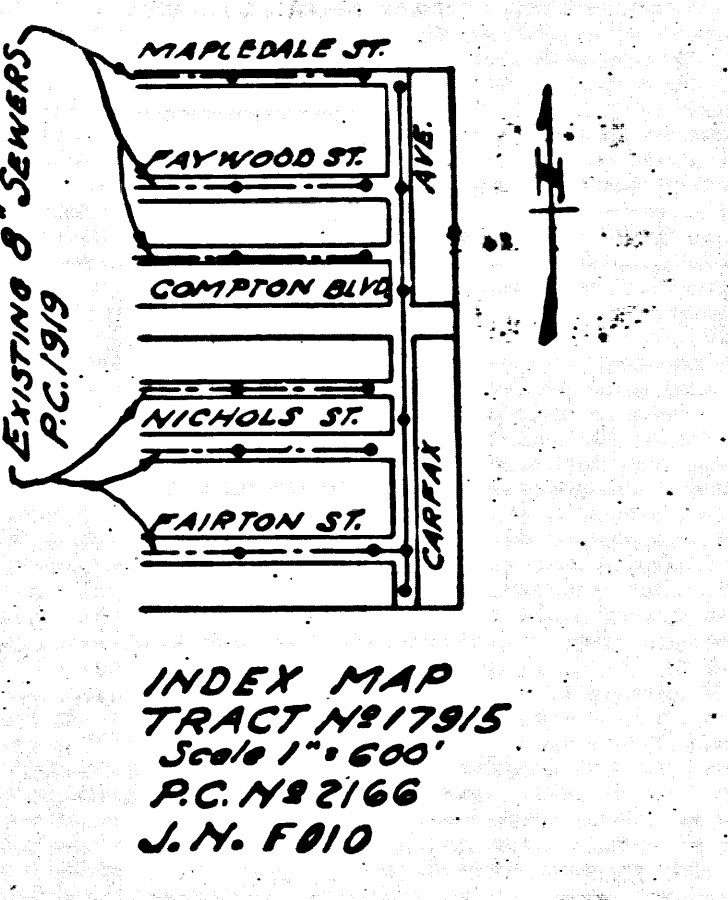
NOTE:
 Grades to which this improvement is to be constructed are shown on Plans and Profiles. Grade points for lines of curb, centerline of street or centerline of alley are shown by circles on Profiles. All points between designated points the grade shall be established so as to conform to a straight line drawn between said designated points. Elevations are in feet above M.S.L. unless otherwise noted.
 This drawing and the data hereon are hereby made a part of the specifications. Work shall be constructed according to specifications on file in the office of the County Engineer and shall be completed only in the presence of the County Engineer. Before work can be started the Contractor must obtain a permit to excavate in County Street from the L.A. County Road Dept. If the Contractor does not obtain a permit with the County Engineer, 928 L.A. County Engineering Bldg. sufficient to cover the cost of construction inspection and Record Plans.
 Approval of this Plan by the County of Los Angeles does not constitute a representation as to the accuracy of the location of or the existence or non-existence of any underground utility, pipe or structure within the limits of this project.

COUNTY OF LOS ANGELES, CALIFORNIA

WILLIAM J. FOX - COUNTY ENGINEER
 APPROVED BY *W. J. Fox*
 Chief Deputy

A. M. RAWN
 CHIEF ENGINEER COUNTY ENGINEER
 APPROVED BY *A. M. Rawn*
 Office Engineer

CHECKED BY *W. J. Fox* 4-29-52
 OFFICE OF COUNTY ENGINEER, REG. C.E. No. 1472



21

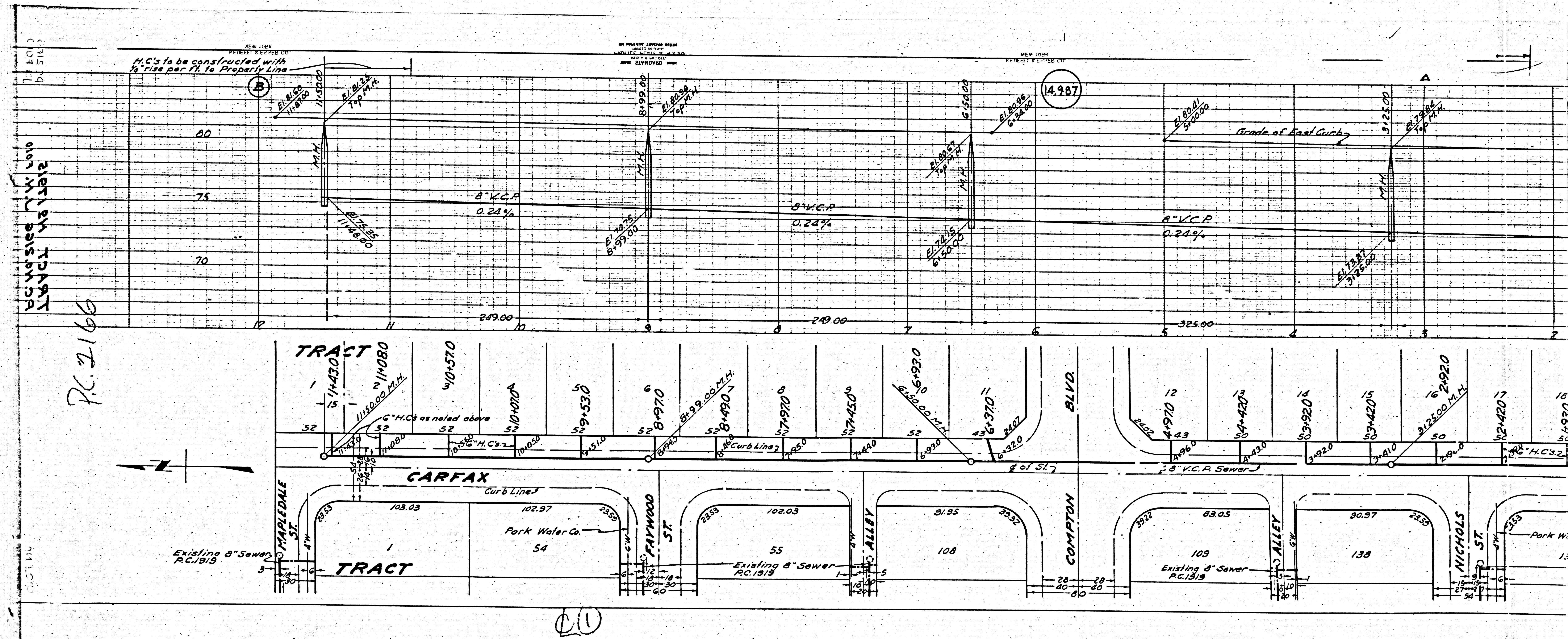
TRIM LINE

REVISIONS

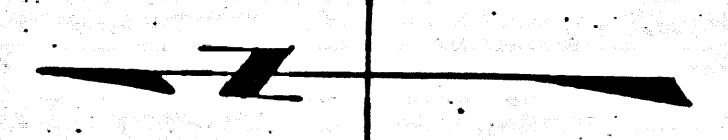
NO. 17915

NO. 15866

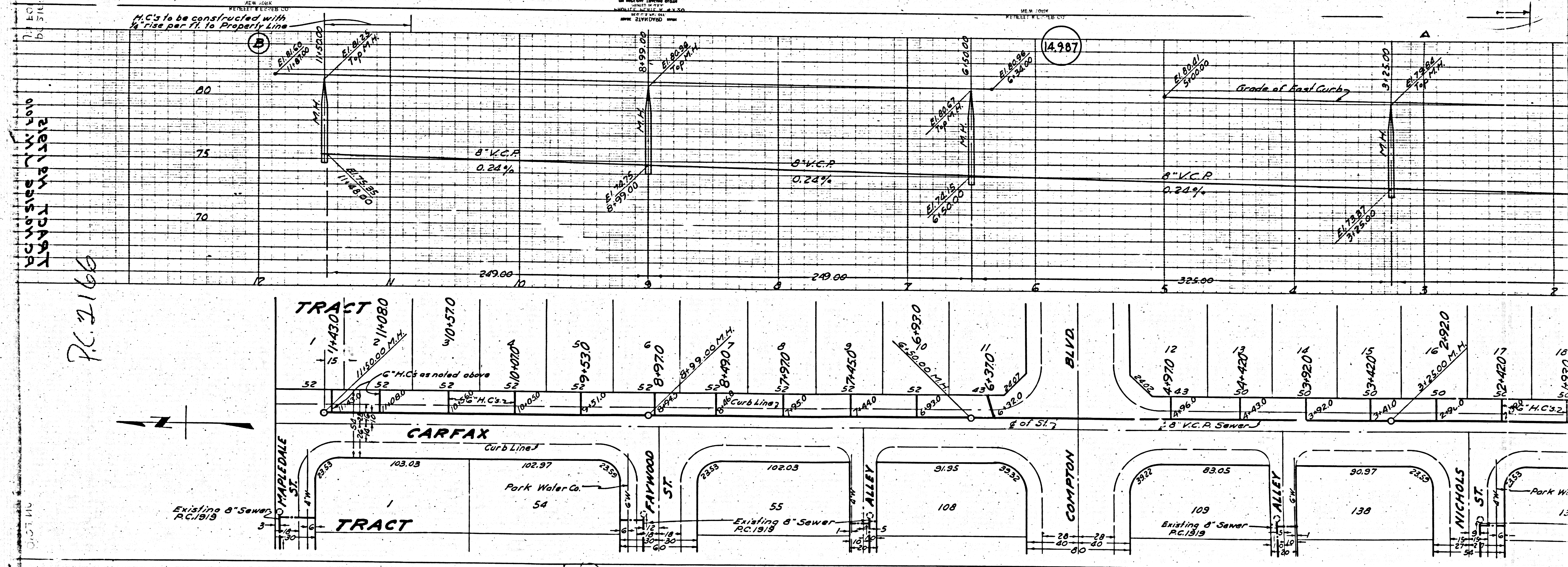
TRIM LINE



P.C. 2166



20



NEW YORK DISTRICT

M.C.'s to be constructed with 1/4" rise per ft. to Property Line

8" V.C.P. 0.24%

Grade of Road Curbs

14.987

8" V.C.P. 0.24%

8" V.C.P. 0.24%

8" V.C.P. 0.24%

8" V.C.P. 0.24%