

USE STANDARD STRENGTH PIPE EXCEPT AS NOTED.	15,894
USE CEMENT MORTAR FOR ALL VITRIFIED CLAY PIPE JOINTS.	
ENGAGE FOUR FEET OF SEWER AT POINTS OF INTERFERENCE WITH POLES AS PER S-413.	
CONSTRUCT HOUSE CONNECTIONS WITH INVERT AT PROPR LINE 18 FEET BELOW CURB GRADE EXCEPT AS NOTED.	
ALL STRUCTURES SHALL BE BRICK SEWER STRUCTURES AS PER PLAN NO. S-414 EXCEPT AS NOTED.	
USE STANDARD MANHOLE FRAMES AND COVERS AS PER PLAN NO. S-417 EXCEPT AS NOTED.	
CONSTRUCT TOPS OF ALL STRUCTURES IN RIGHTS OF WAY 6\"/>	
RESURFACE ALL TRENCHES WITHIN PAVED AREA TO MEET LOS ANGELES COUNTY ROAD DEPT. OR STATE HIGHWAY REQUIREMENTS IN ACCORDANCE WITH PERMIT.	
PROVIDE STAKES ON THE PROPERTY LINES OR PROPERTY LINES PRODUCED, AT RIGHT ANGLES TO THE SEWER LINE AT THE CENTER LINE OF EACH MANHOLE.	
NO REVISIONS SHALL BE MADE IN THESE PLANS WITHOUT APPROVAL OF THE COUNTY ENGINEER. NO REPRESENTATIVE OF THE COUNTY ENGINEER WILL SURVEY OR LAY OUT ANY PORTION OF THE WORK.	
THE OWNER OR HIS AUTHORIZED REPRESENTATIVE SHALL FURNISH THE COUNTY ENGINEER WITH GRADE SHEETS AND STATIONS OF ALL HOUSE CONNECTIONS AND Y BRANCHES AND SHALL PROVIDE STAKES FOR THEM AT THEIR PROPER LOCATIONS WITH STATIONING PLAINLY MARKED. ANY CHANGE OF LOCATION SHALL BE REQUESTED IN WRITING BY THE OWNER OR HIS REPRESENTATIVE.	
STOPPERS TO BE INSTALLED WITH JOINT COMPOUND BY MANUFACTURER AT HIS PLANT. SPECIFICATIONS - SECTION 33 43.	
CONCRETE PAVEMENT TO BE CUT NOT LESS THAN 2 INCHES IN DEPTH WITH CONCRETE SAW. SPECIFICATIONS - SECTION 66.	
WIRE & TAGS REQUIRED PER SPEC. SEC. 48.	
APPROVAL OF THIS PLAN BY THE COUNTY OF LOS ANGELES DOES NOT CONSTITUTE A REPRESENTATION AS TO THE ACCURACY OF THE LOCATION OF, OR THE EXISTENCE OR NON-EXISTENCE OF, ANY UNDERGROUND UTILITY, PIPE OR STRUCTURE WITHIN THE LIMITS OF THIS PROJECT. (THIS NOTE APPLIES TO ALL SHEETS)	

PROFILE ALIGNMENT AND GRADE OF
SANITARY SEWERS
 TO BE CONSTRUCTED IN
 TRACT NO 17561
EASEMENT
 FROM HAWES ST TO PT. 1009' N 61' E
BONAVISTA LANE
 FROM EASEMENT (80 TR. BDRY) TO LAMBERT RD.
DANBROOK DRIVE
 FROM BONAVISTA LANE TO PT 758' N 11' W

PRIVATE CONTRACT NO. 2198
 W. S. 34
 SHEET 1 OF 3 SHEETS
 SCALE: VERT. 1"=4'
 HORIZ. 1"=40'
 MAY 20-1952

PREPARED IN THE OFFICES OF
KEMMERER ENG. Co.
 BY: *Hans C. Kemmerer*
 CIVIL ENGINEER
 FOR LEGEND
 SEE PLAN NO S-2-34

RECEIVED
 DEC 4 1952
 L. A. COUNTY ENGINEER
 SANITATION DIVISION

NOTE:
 GRADES TO WHICH THIS IMPROVEMENT IS TO BE CONSTRUCTED ARE SHOWN ON PLANS AND PROFILES. GRADE POINTS FOR TOP OF CURB, CENTER LINE OF STREET OR CENTER LINE OF ALLEY ARE SHOWN BY CIRCLES ON PROFILES AT ALL POINTS BETWEEN DESIGNATED POINTS THE GRADE SHALL BE ESTABLISHED SO AS TO CONFORM TO A STRAIGHT LINE DRAWN BETWEEN SAID DESIGNATED POINTS.
 ELEVATIONS ARE IN FEET ABOVE U. S. G. S. DATUM OR MEAN SEA LEVEL.
 THIS DRAWING AND THE DATA HEREON ARE HEREBY MADE A PART OF THE SPECIFICATIONS.
 WORK SHALL BE CONSTRUCTED ACCORDING TO SPECIFICATIONS ON FILE IN THE OFFICE OF THE COUNTY ENGINEER AND SHALL BE PROSECUTED IN THE PRESENCE OF THE COUNTY ENGINEER. BEFORE WORK CAN BE STARTED, THE CONTRACTOR MUST OBTAIN A PERMIT TO EXCAVATE IN COUNTY STREETS FROM THE L. A. COUNTY ROAD DEPT. JOB W. 5-18 5-18 LOS ANGELES AND MAKE A DEPOSIT WITH THE COUNTY ENGINEER \$200.00 AT 108 W END STREET, SUFFICIENT TO COVER THE COST OF CONSTRUCTION INSPECTION AND RECORD PLANS.
 IF WORK IS TO BE DONE IN A STATE HIGHWAY, A PERMIT MUST BE OBTAINED FROM THE STATE OF CALIFORNIA, DIVISION OF HIGHWAYS, 808 STATE BUILDING, AFTER MAKING THE DEPOSIT WITH THE COUNTY ENGINEER.

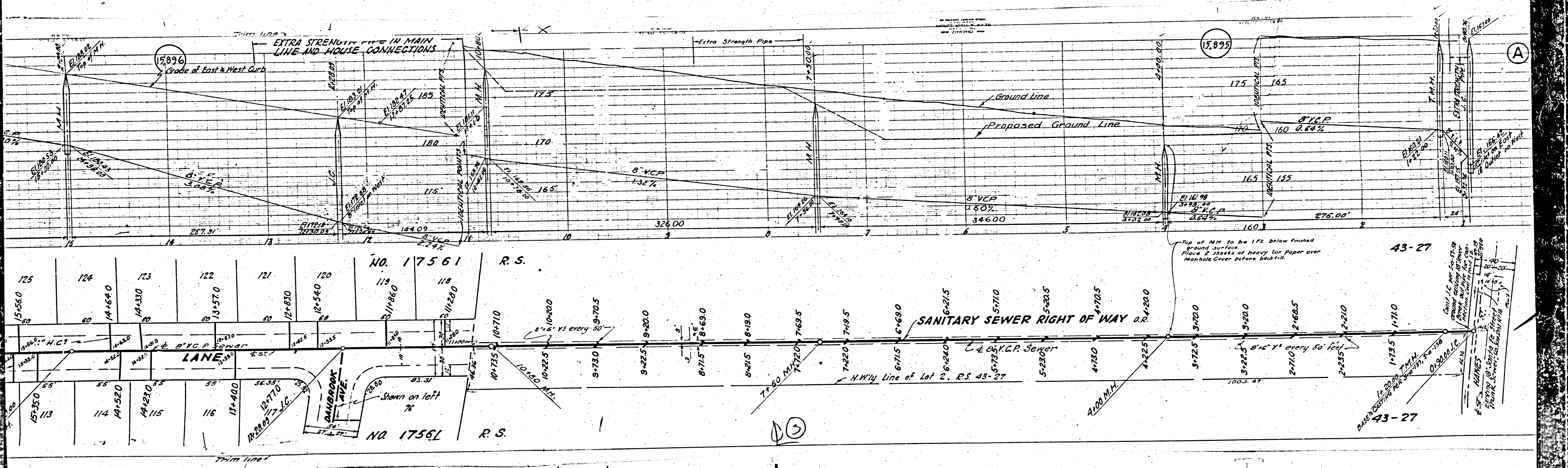
COUNTY OF LOS ANGELES, CALIFORNIA
 WILLIAM J. FOX, County Engineer
 APPROVED BY: *W. J. Fox*
 AM. CIVIL ENGINEER
 APPROVED BY: *Hans C. Kemmerer*
 CIVIL ENGINEER
 CHECKED BY: *Hans C. Kemmerer*
 OFFICE OF COUNTY ENGINEER, 808 STATE BLDG.

Approved for relocation of
 Manholes across school property
 H.L. Sandler 11-17-52
 before final acceptance of this work,
 County Sanitation District should be notified
 in order that required inspection may be made.

SHEET NO. 1 OF 3 SHEETS
 SANITARY SEWERS - SUBJECT W. 17561
 BC 5198

BC 5198

14



15896

EXTRA STRENGTH PIPE IN MAIN LINE AND HOUSE CONNECTIONS

Grade of East & West Curb

Extra Strength Pipe

Ground Line

Proposed Ground Line

15895

8" V.C.P. 0.64%

8" V.C.P. 1.32%

8" V.C.P. 3.4600%

8" V.C.P. 2.64%

NO. 17561 R.S.

NO. 1756L R.S.

SANITARY SEWER RIGHT OF WAY O.R.

4" V.C.P. Sewer

N.W. 1/4 Line of Lot 2, R.S. 43-27

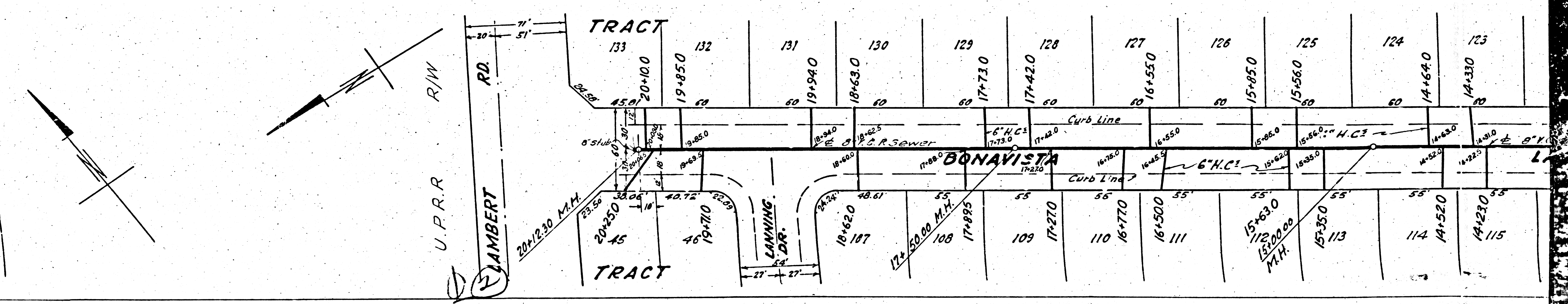
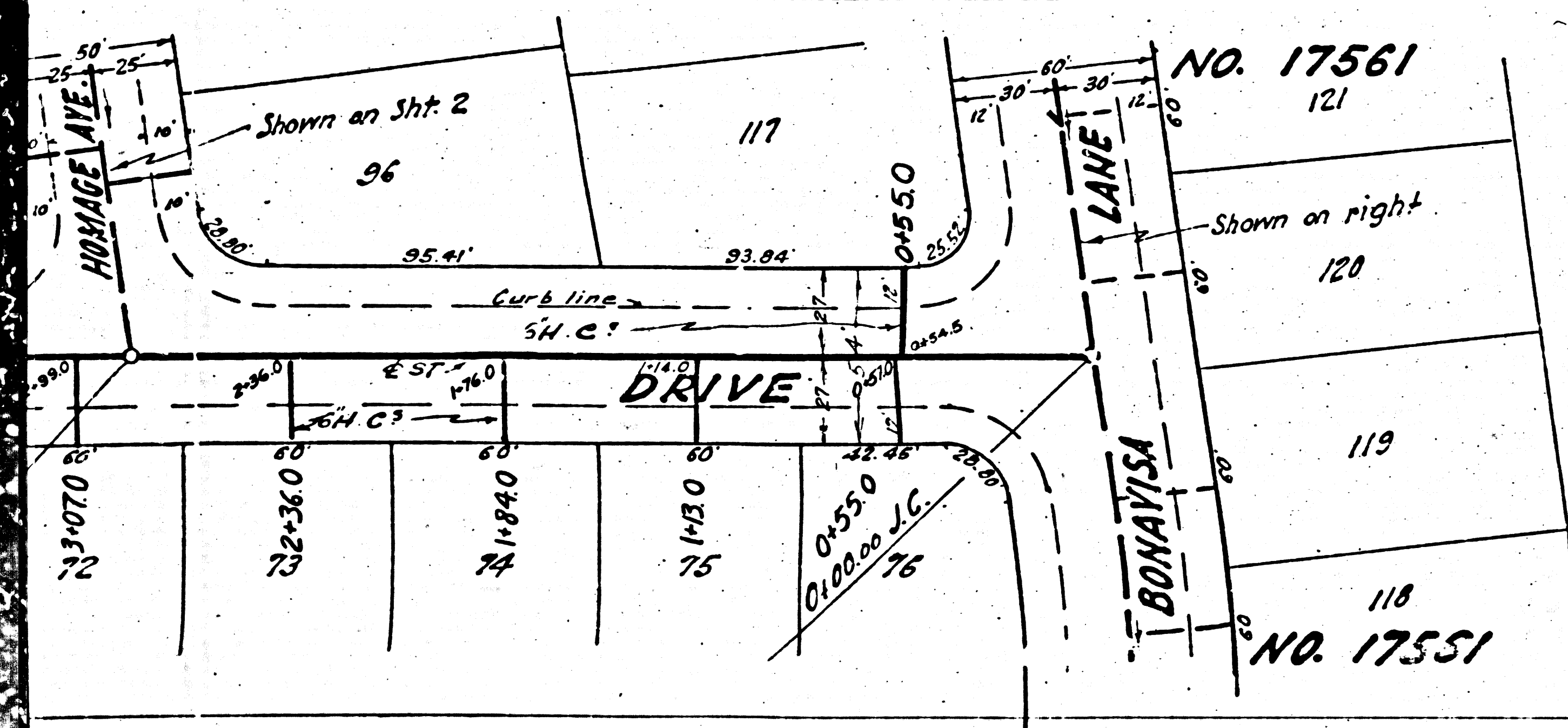
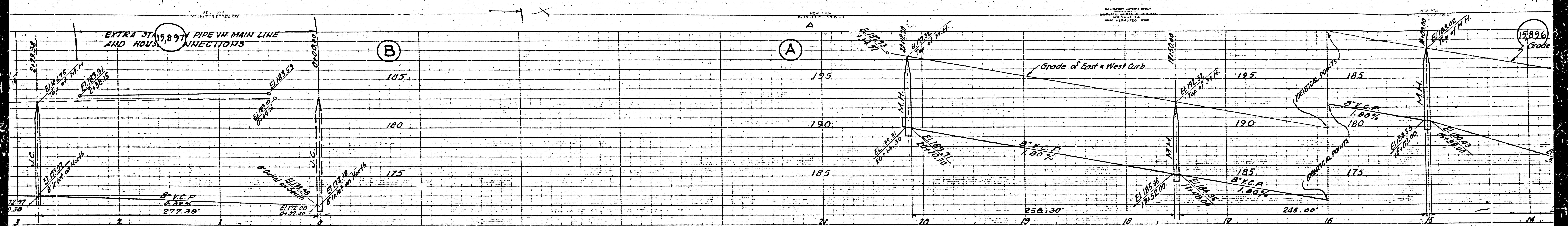
Top of M.H. to be 1 FT. below finished ground surface. Place 2 sheets of heavy tar paper over Manhole Cover before backfill.

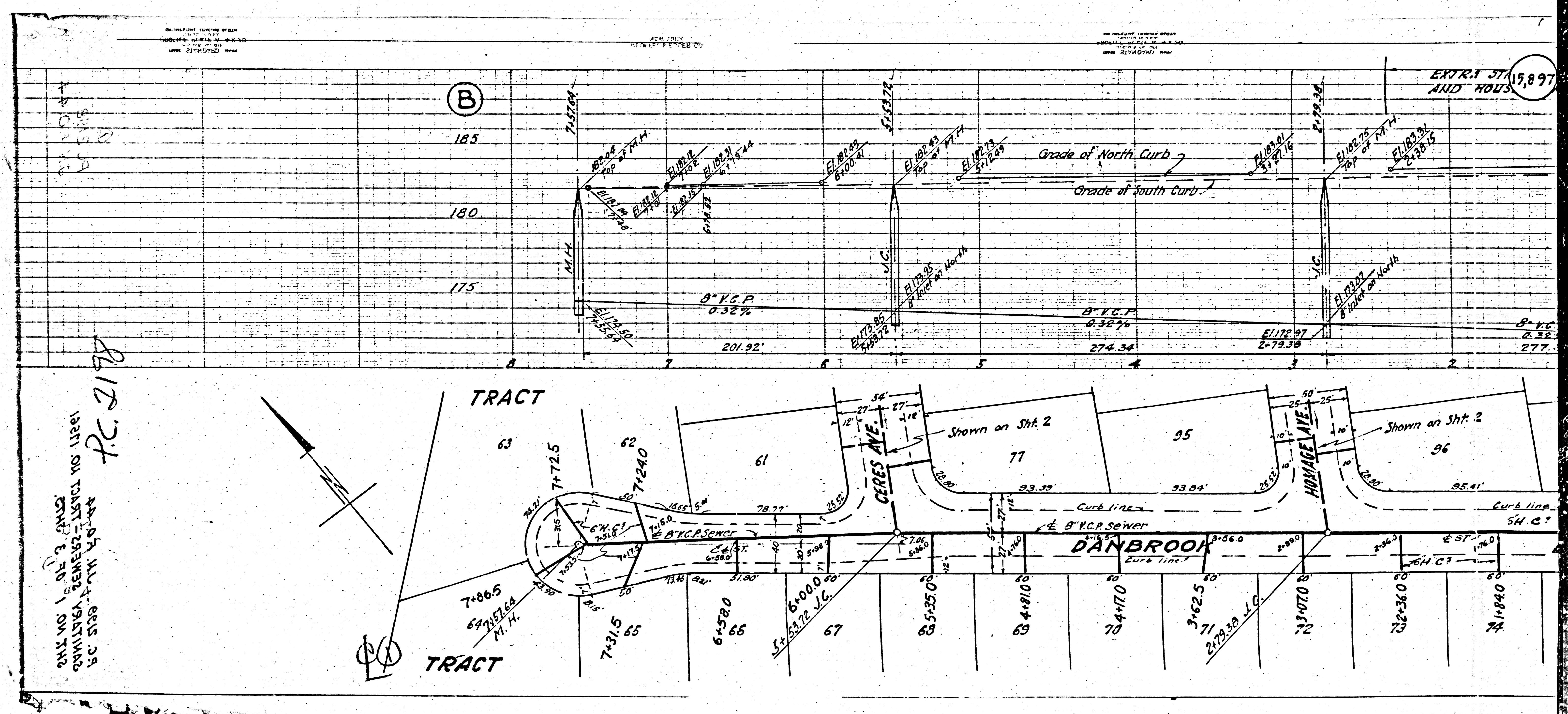
43-27

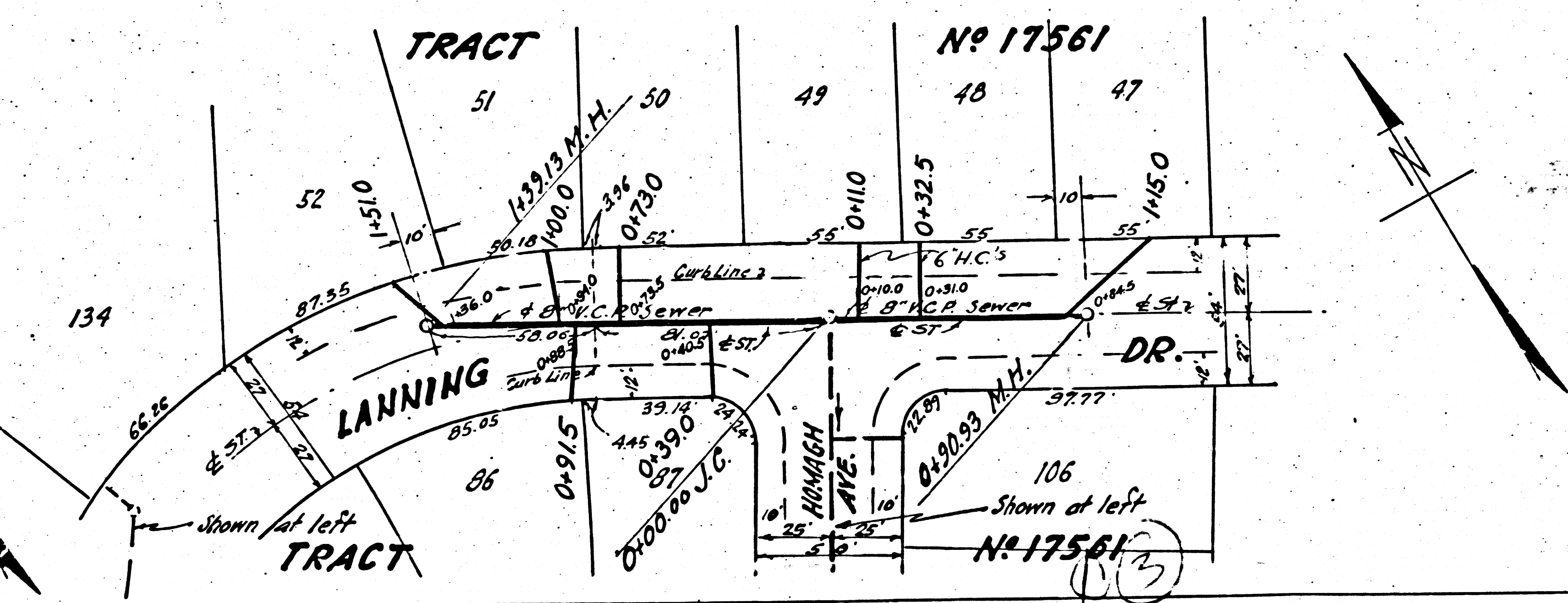
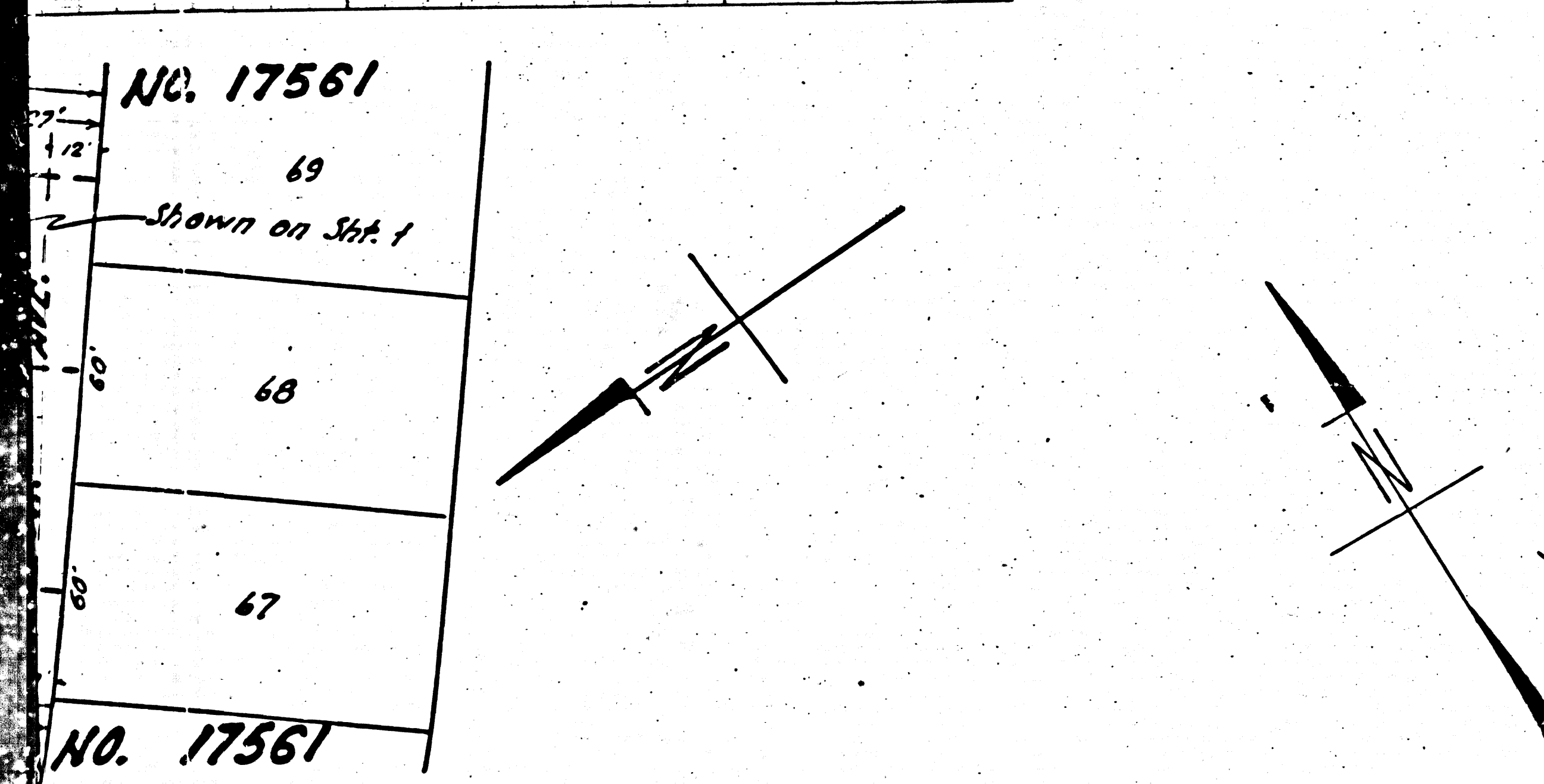
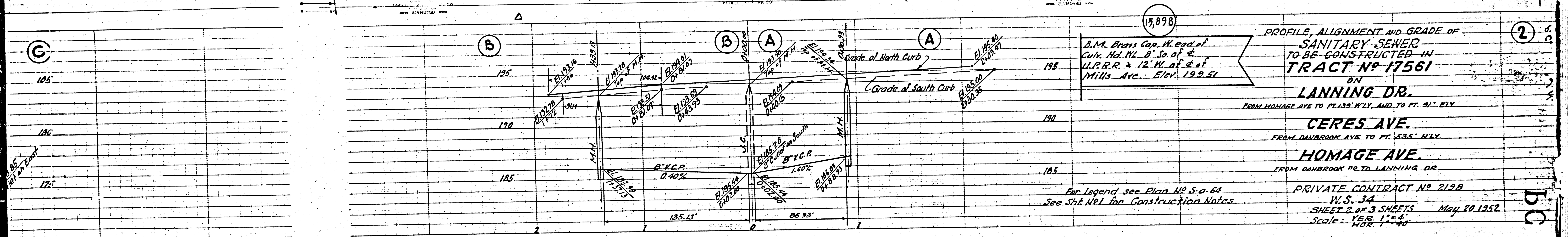
43-27

A

10







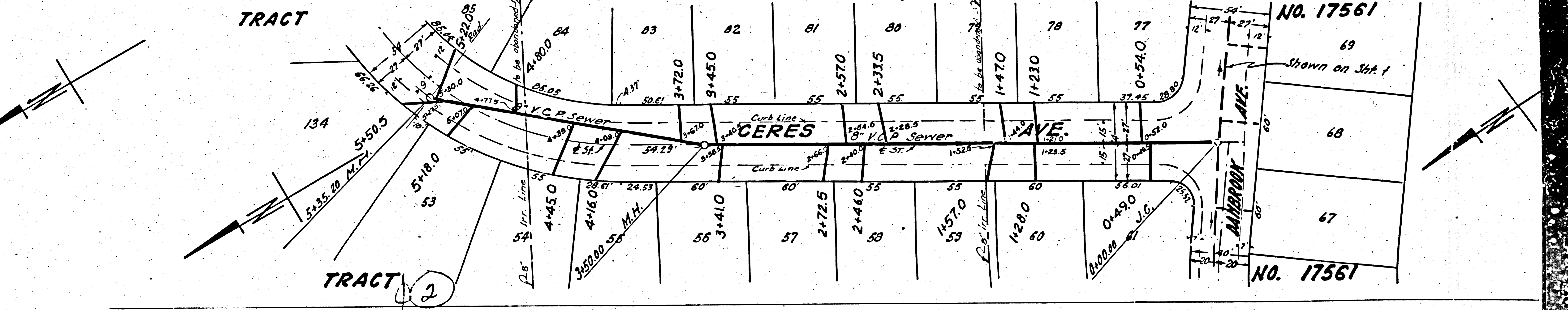
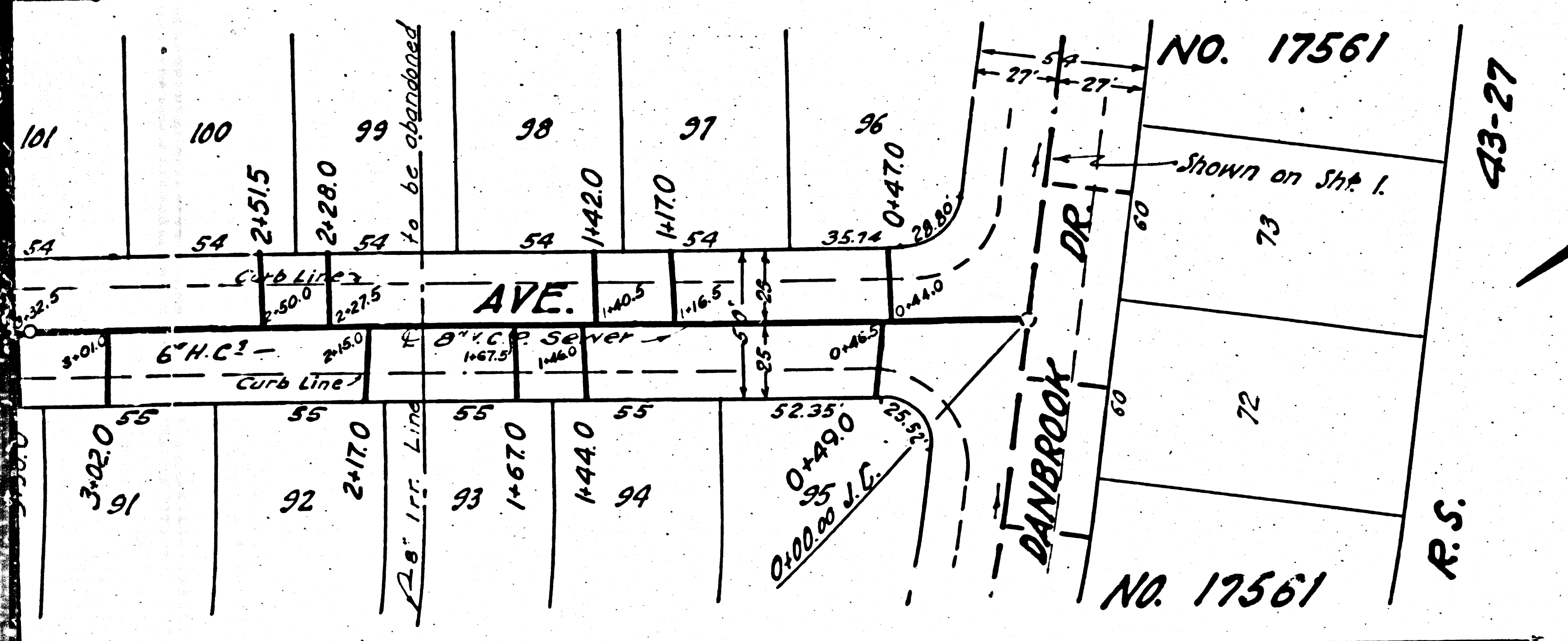
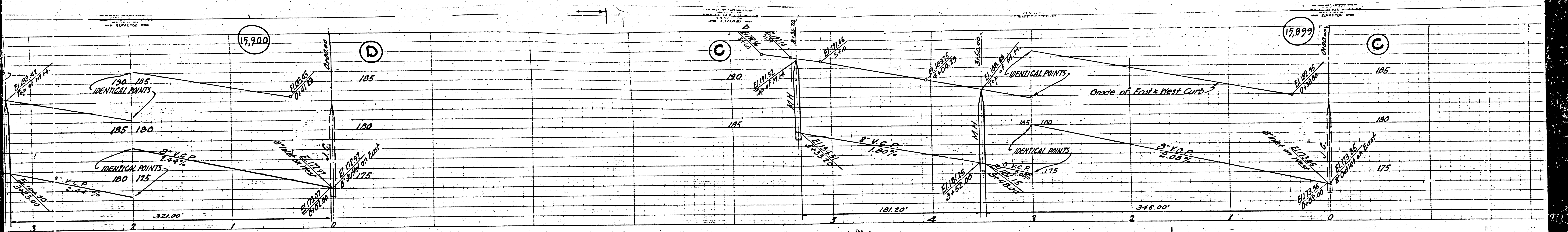
PREPARED IN THE OFFICE OF
 KEMMERER ENGR. CO. INC.
 By: Hans C. Thomsen
 Reg. C.E. No 8244

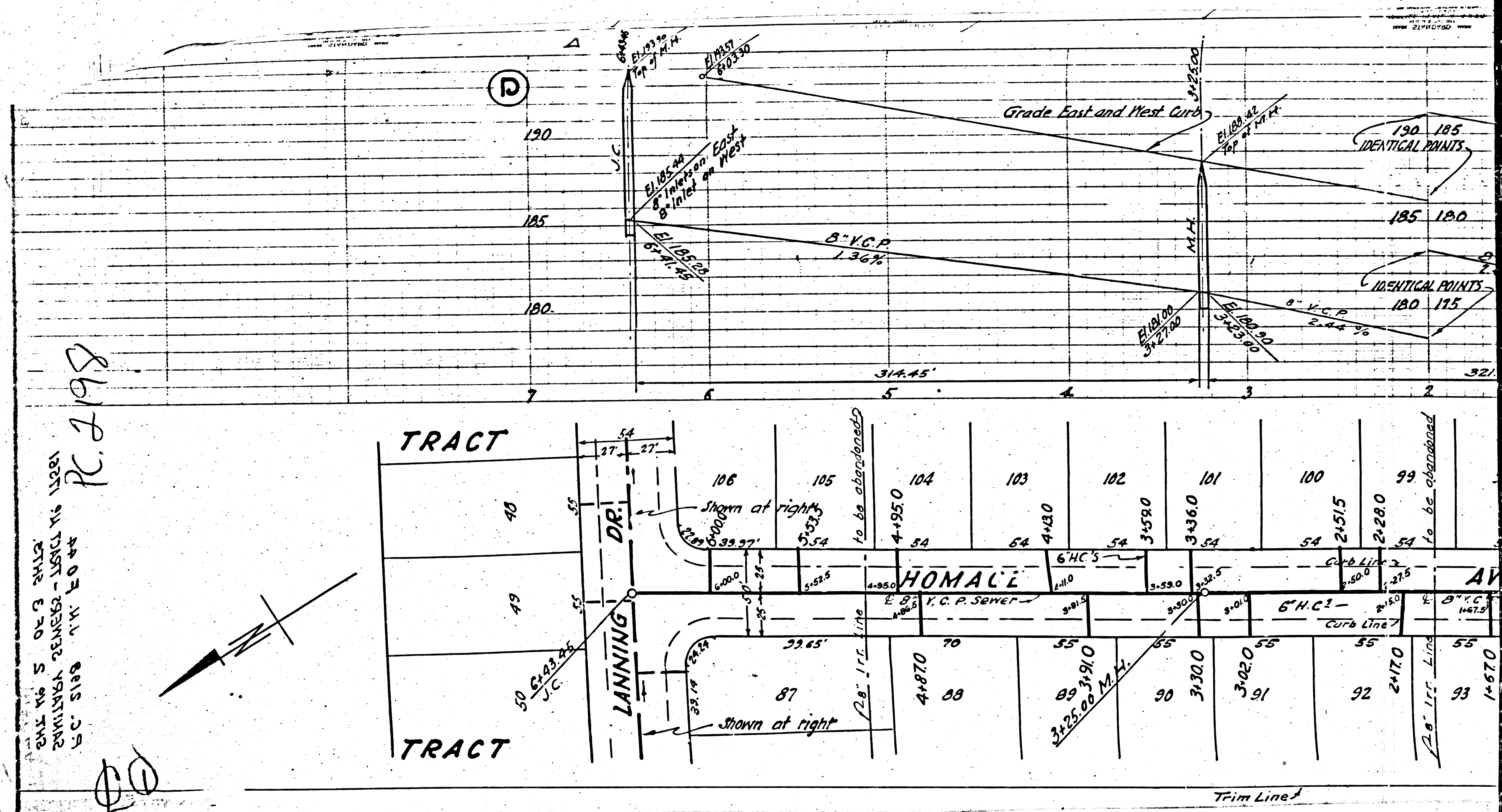
COUNTY OF LOS ANGELES, CALIFORNIA
 WILLIAM J. FOX County Engineer
 APPROVED By: H. C. Thomsen CHIEF DEPUTY
 APPROVED By: A. M. Rahn OFFICE ENGINEER
 CHIEF ENGINEER, SAN. DISTRICT No 18
 APPROVED By: H. L. Smith OFFICE OF COUNTY ENGINEER, REG. C.E. No 5412

Before opening into any existing structure
 and before final acceptance of this work,
 County Sanitation District should be notified
 in order that required inspection may be made.

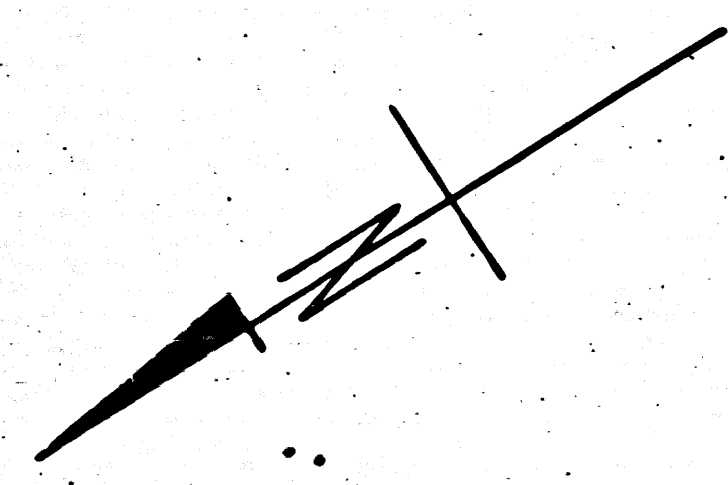
JUN 7 1952
 L 613-5-53 McKenna

BC S198

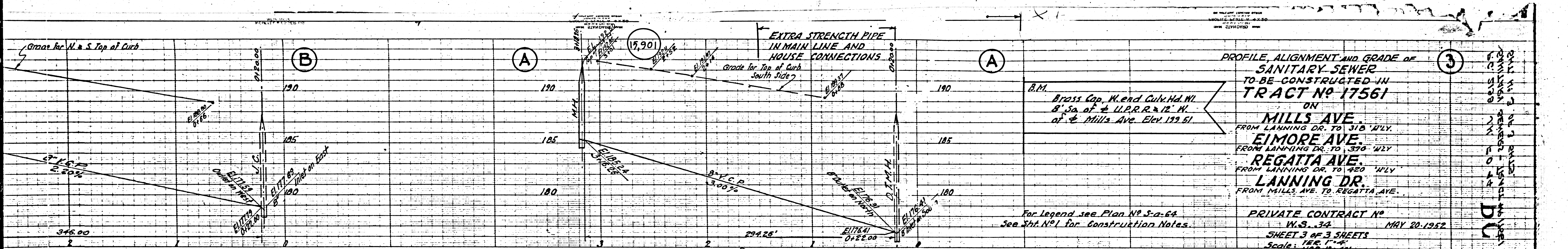


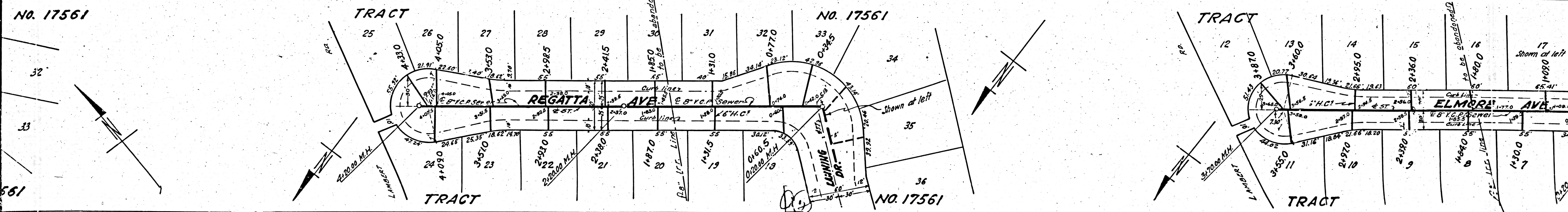
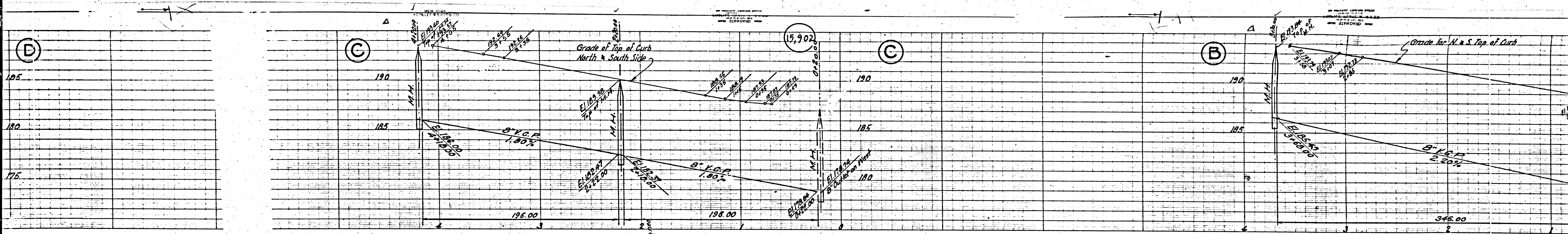


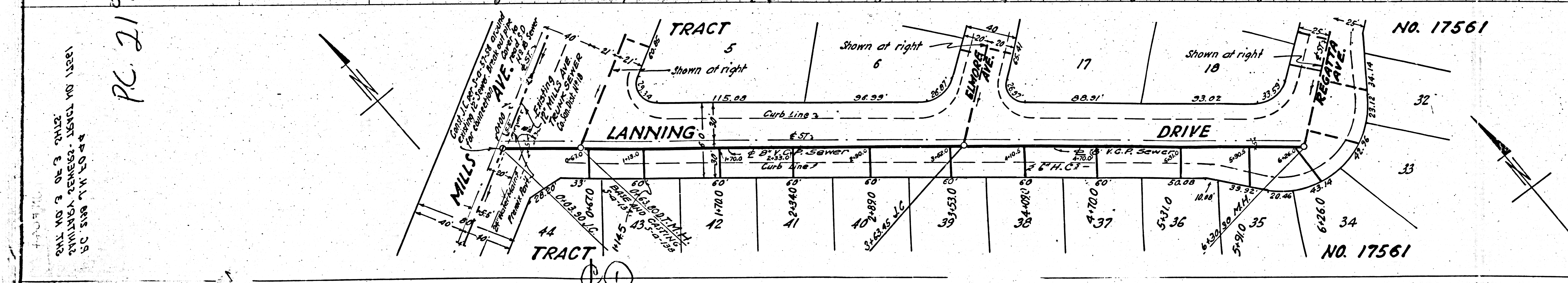
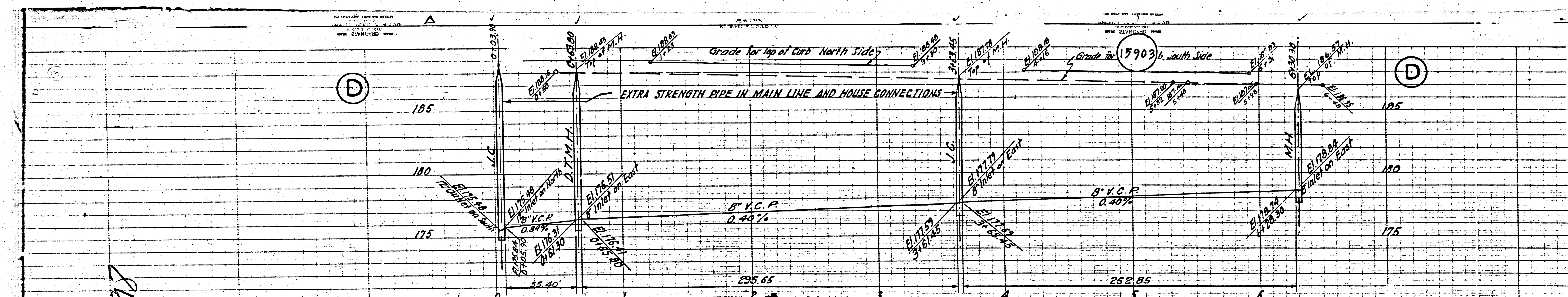
PLAN NO. 5 OF 3 SHEETS
 DIVISION ENGINEER - DISTRICT NO. 1308A
 COUNTY OF LOS ANGELES
 CITY OF LOS ANGELES
 R. 2198



Trim Line







PLAN NO. 3 OF 3
 EXHIBIT A, REVISED - JANUARY 1951
 SC 518 1/4 20 44

PC 2198

