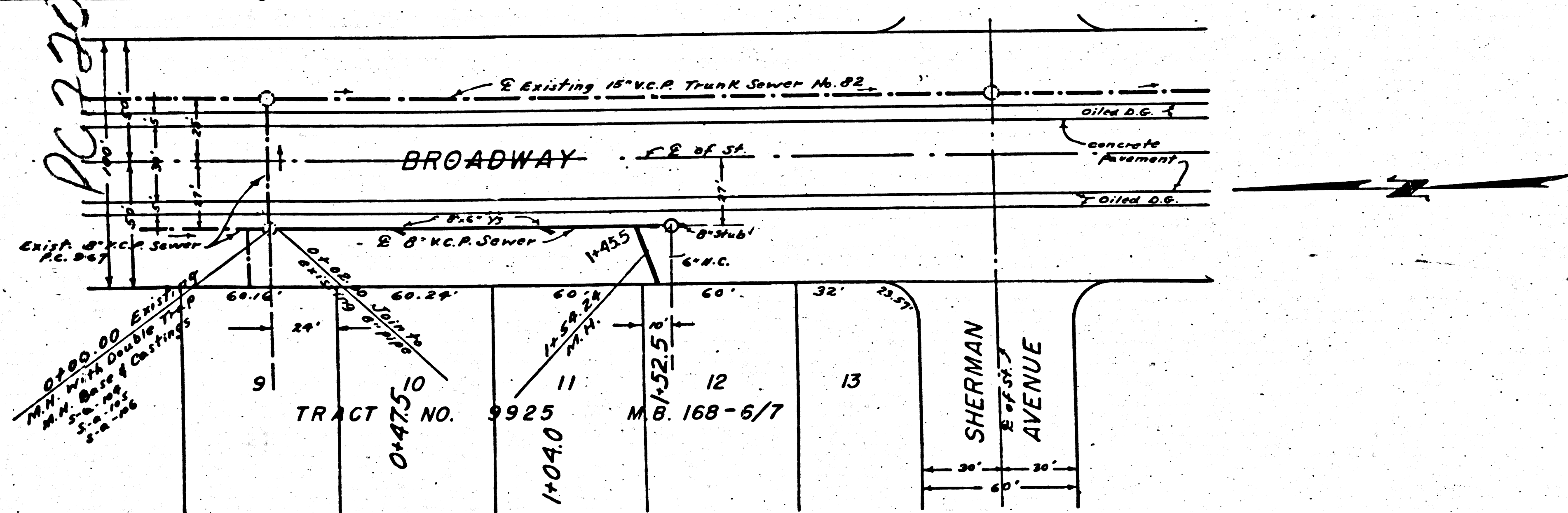
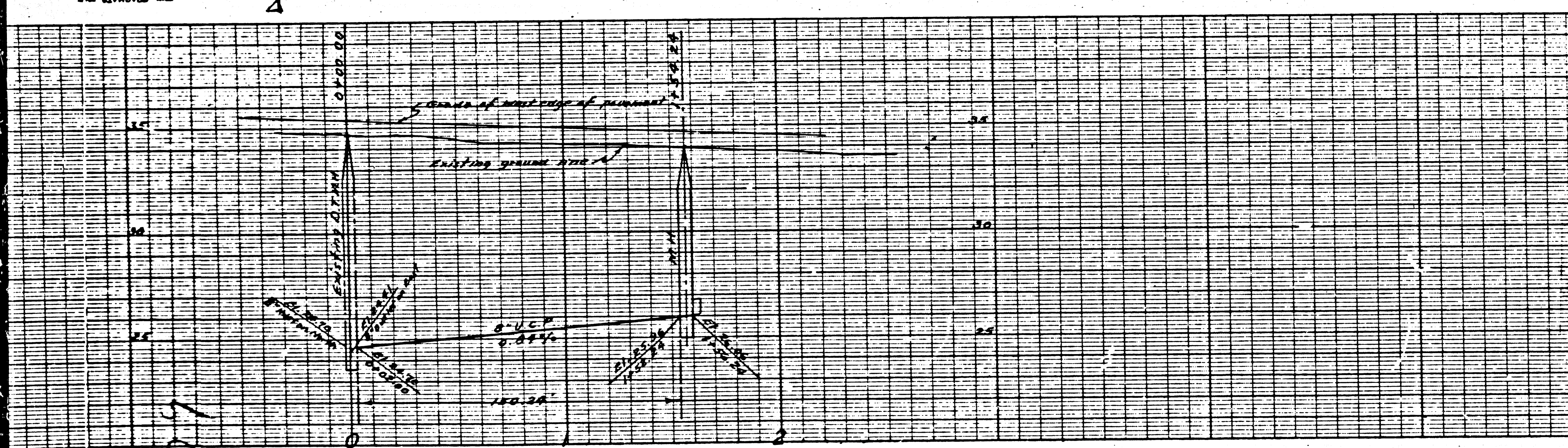


RELATIVE TO THE CITY OF LOS ANGELES
 4
 KENNETH F. EGGER CO.
 14,971



LENNOX

BENCH MARK No. 8-80 TRUNK SEWER No. 82 ELEV. 31.77
 Lead and tack at center line intersection of Walnut Street and Broadway.

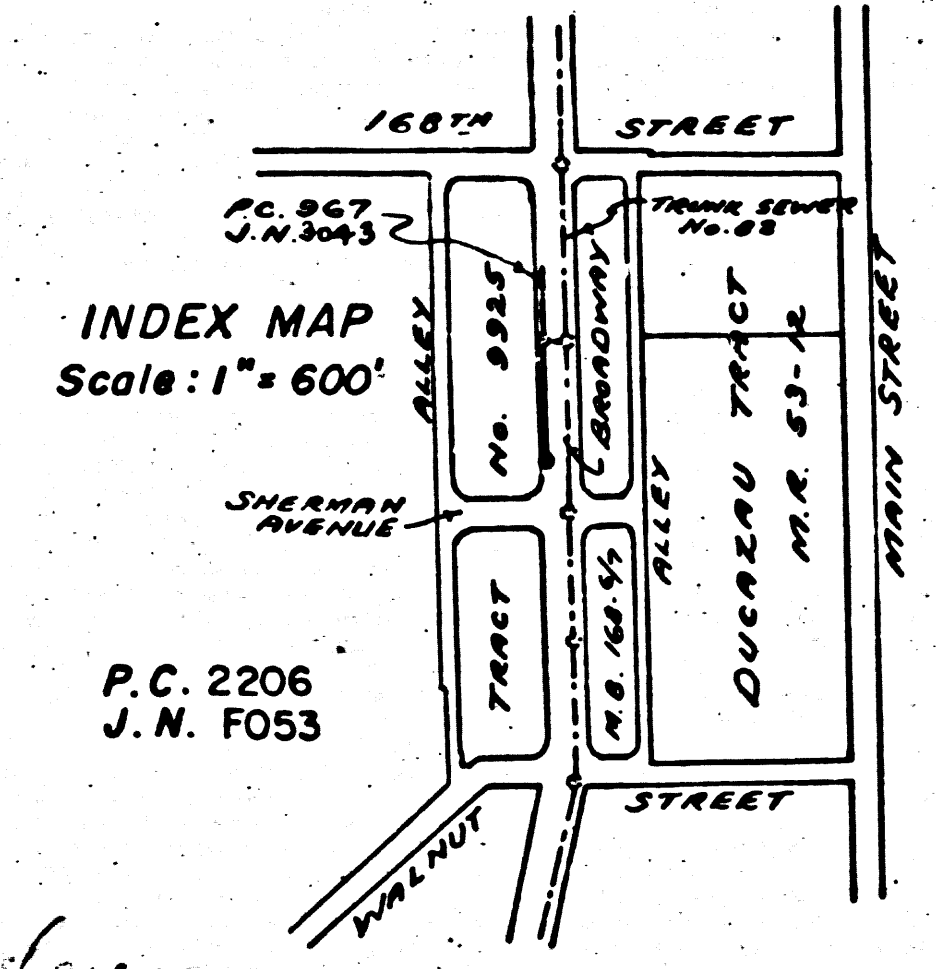
1. USE STANDARD MANHOLE FRAME AND COVER, S-a-117.
2. USE STANDARD STRENGTH PIPE. (EXCEPT AS NOTED)
3. USE CEMENT MORTAR FOR ALL VITRIFIED CLAY PIPE JOINTS.
4. RESURFACE ALL TRENCH WITHIN PAVED AREA TO MEET LOS ANGELES COUNTY ROAD DEPT. OR CALIFORNIA STATE HIGHWAY REQUIREMENTS IN ACCORDANCE WITH PERMIT.
5. CONSTRUCT HOUSE CONNECTIONS WITH INVERT AT PROPERTY LINE (3) FEET BELOW CURB GRADE.
6. ENCASE FOUR FEET OF SEWER AT POINTS OF INTERFERENCE WITH POLES AS PER S-a-119.
7. ALL STRUCTURES SHALL BE BRICK SEWERS, S-a-104.
8. CONSTRUCT TOPS OF ALL STRUCTURES IN RIGHTS-OF-WAY 6" ABOVE FINISHED GRADE.
9. STOPPERS TO BE INSTALLED WITH JOINT COMPOUND BY MANUFACTURER AT HIS PLANT. SPECS. SEC. 33.48
10. CONCRETE PAVEMENT TO BE CUT, NOT LESS THAN 2" IN DEPTH WITH CONCRETE SAW. SPECS. SEC. 63.

NOTE:
 No representative of the County Engineer will survey or layout any portion of the work. The owner or his authorized representative shall furnish the County Engineer with grade sheets and stations of all house connections and Y branches and shall provide stakes for them at their proper locations with stationing plainly marked. Any change of location shall be requested in writing by the owner or his representative. No revisions shall be made in these plans without approval of the County Engineer.

NOTE:
 Provide stakes on the property lines or property lines produced, at right angles to the sewer line at the center line of each manhole.

NOTE:
 Install wire tags per Specs. Sec. 48.

INDEX MAP
 Scale: 1" = 600'



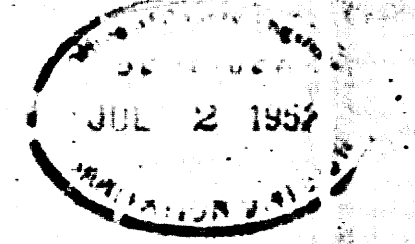
P.C. 2206
 J.N. FOSB

check 7-31-52 W. L. Linn

PROFILE, ALIGNMENT AND GRADE OF
SANITARY SEWERS
 TO BE CONSTRUCTED IN
BROADWAY
 FROM EXISTING M.H. 251 FEET NORTH OF SHERMAN AVENUE TO A POINT 154 FEET SOUTH THEREFROM.

PRIVATE CONTRACT NO. 2206
 W.S. 26
 SHEET 1 OF 1 SHEET
 SCALE: VERTICAL 1" = 4'
 HORIZONTAL 1" = 40'
 MAY, 1952

PREPARED IN THE OFFICES OF
GLEN ROOD, Registered Engineer
 BY Glen Rood
 REG. C.E. NO. 2093
 FOR LEGEND
 SEE PLAN NO. S-a-64



NOTE:
 Grades to which this improvement is to be constructed are shown on Plans and Profile. Grade points for top of curb, center line of street or center line of alley are shown by circles on profiles. At all points between designated points the grade shall be established so as to conform to a straight line drawn between said designated points.
 Elevations are in feet above U.S.G.S. Datum or mean sea level.
 This drawing and the data hereon are hereby made a part of the Specifications.
 Work shall be constructed according to Specifications and file in the office of the County Engineer and shall be prosecuted only in the presence of the County Engineer.
 Before work can be started, the contractor must obtain a permit to excavate in county streets from the L.A. County Road Department, 211 So. Main Street, and make a deposit with the County Engineer, 828 L.A. County Engineering Bldg., sufficient to cover the cost of construction inspection and record plans.
 If work is to be done in a State Highway, a permit must be obtained from the State of California, Division of Highways, 120 So. Spring Street after making the deposit with the County Engineer.
 Approval of this plan by the County of Los Angeles does not constitute a representation as to the accuracy of the location of, or the existence or non-existence of any underground utility, pipe or structure within the limits of this project.

COUNTY OF LOS ANGELES, CALIFORNIA
 WILLIAM J. FOX - COUNTY ENGINEER
 APPROVED BY W. L. Linn CHIEF DEPUTY
 BY Glen Rood OFFICE ENGINEER
 CHECKED BY John J. Gorman OFFICE OF COUNTY ENGINEER, REV. C.E. NO. 782 DATE 6-1-52

bc 5502