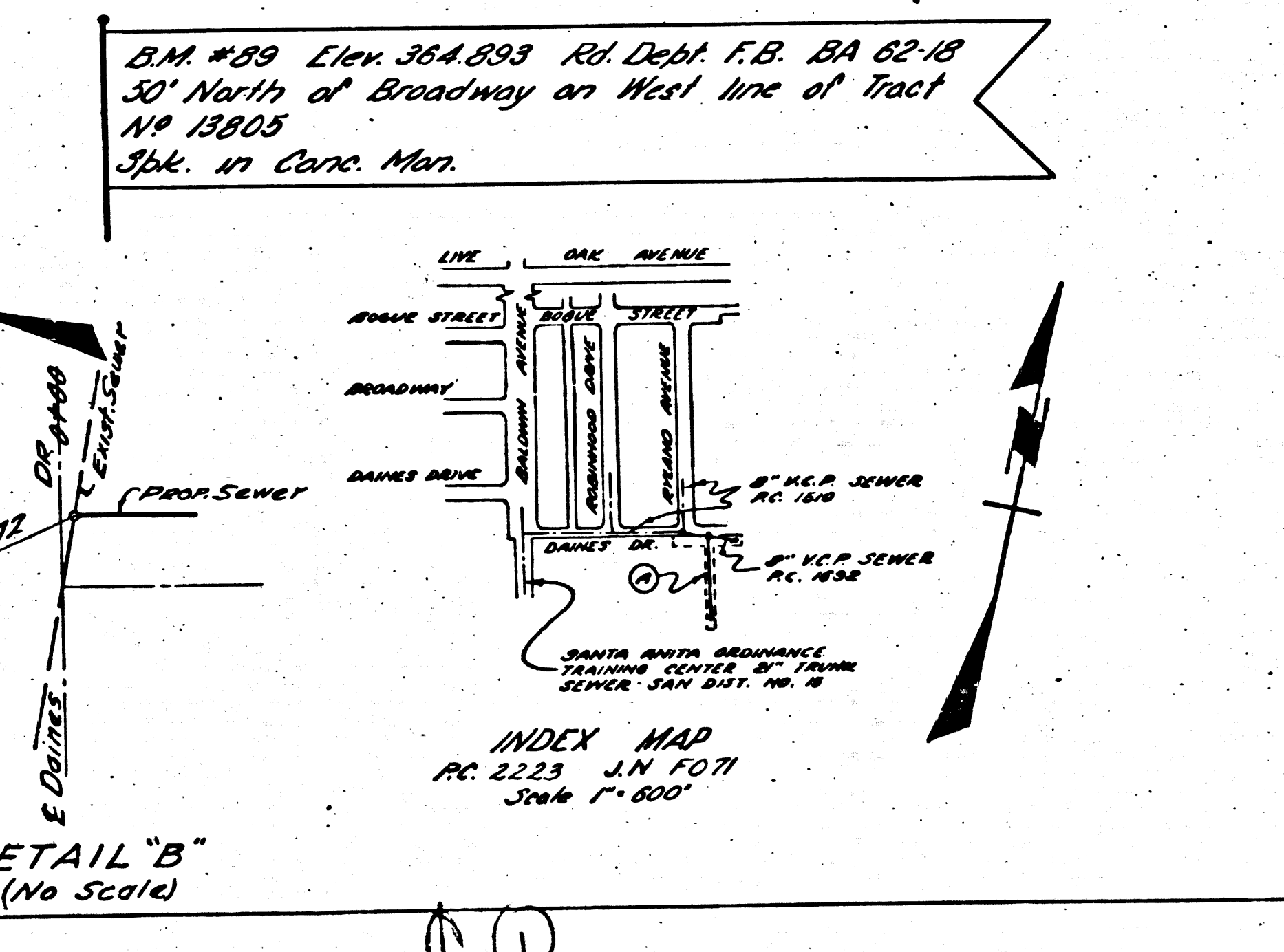
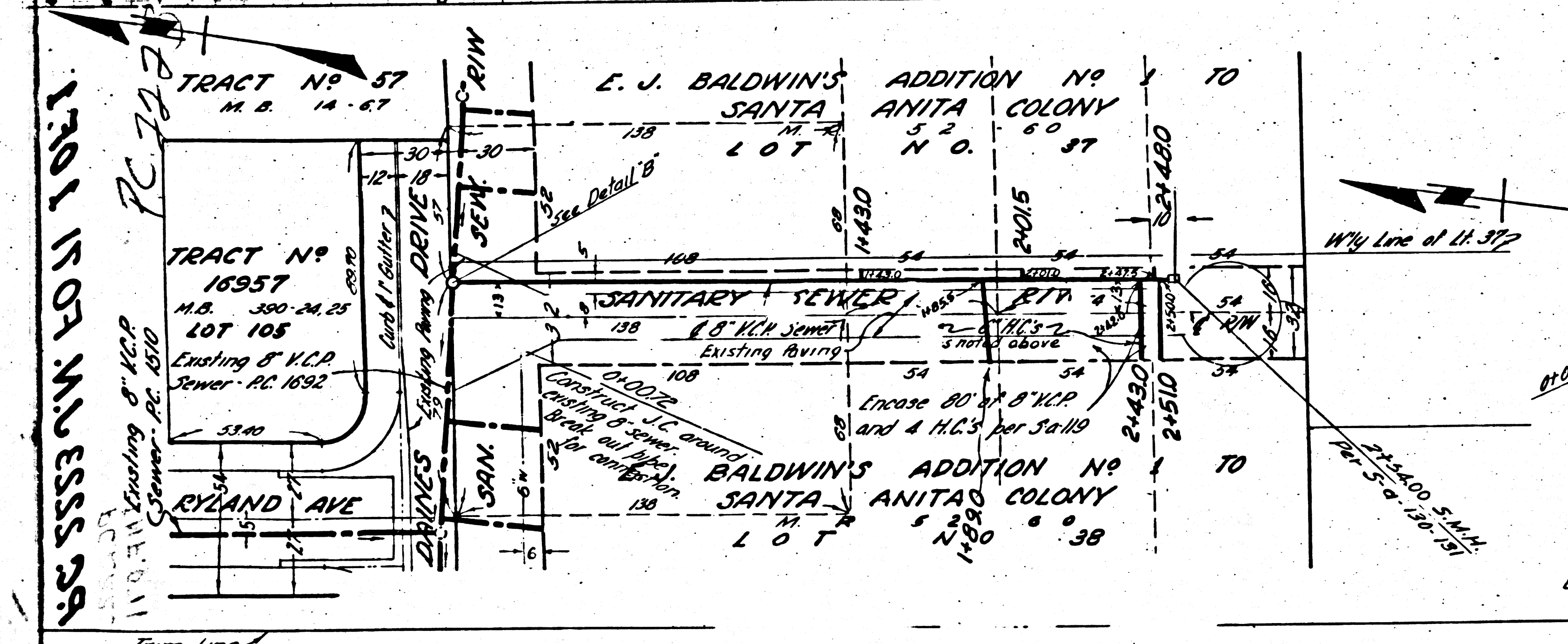


- TEMPLE CITY**
- (1) USE STANDARD MANHOLE FRAME AND COVER, 3'-0" DIA.
 - (2) USE STANDARD STRENGTH PIPE.
 - (3) USE CEMENT MORTAR FOR ALL VITRIFIED CLAY PIPE JOINTS.
 - (4) CONSTRUCT HOUSE CONNECTIONS WITH 1/2" RISE PER FOOT TO PROPERTY LINE. PIPES TO BE LAID HORIZONTAL.
 - (5) ENCASE FOUR FEET OF SEWER AT POINTS OF INTERFERENCE WITH PAVERS.
 - (6) ALL STRUCTURES SHALL BE BRICK SEWER STRUCTURES, 3'-0" DIA., EXCEPT AS NOTED.
 - (7) RESURFACE ALL TRENCH WITHIN PAVED AREAS TO MEET L.A. COUNTY ROAD DEPT. REQUIREMENTS IN REGARDS WITH THE PAVEMENT.
 - (8) STOPPERS TO BE INSTALLED BY THE MANUFACTURER AT HIS PLANT. SPEC'S SEC. 38.45.
 - (9) CONCRETE TRENCHES TO BE CUT NOT LESS THAN 2" IN DEPTH WITH CONCRETE SAW. SPEC'S SEC. 65.
 - (10) INSTALL WIRE AND TAGS PER SPEC'S SEC. 48.
- NOTE:**
 NO REPRESENTATIVE OF THE COUNTY ENGINEER WILL SURVEY OR LAY OUT ANY PORTION OF THE WORK.
 THE OWNER OR HIS AUTHORIZED REPRESENTATIVE SHALL FURNISH THE COUNTY ENGINEER WITH GRADE SHEETS AND STATIONS OF ALL HOUSE CONNECTIONS AND Y-BRANCHES AND SHALL PROVIDE STAKES FOR THEM AT THEIR PROPER LOCATIONS WITH STATIONING PLAINLY MARKED. ANY CHANGE IN LOCATION SHALL BE REQUESTED BY WRITING BY THE OWNER OR HIS REPRESENTATIVE. NO REVISIONS SHALL BE MADE IN THESE PLANS WITHOUT APPROVAL OF THE COUNTY ENGINEER.
 PROVIDE STAKES ON PROPERTY LINE TO PROPERTY LINE PROVIDED AT RIGHT ANGLES TO THE SEWER LINE AT THE CENTER LINE OF EACH MANHOLE.
 WHERE GROUND WATER IS ENCOUNTERED WESTON'S GASKETS AND FORMS WILL BE USED PER S-1-51.
 FOR CHANGE IN LENGTH TEST SEE SPEC'S SEC. 45.

**PROFILE, ALIGNMENT AND GRADE OF
 SANITARY SEWERS
 TO BE CONSTRUCTED IN
 SANITARY SEWER RIGHT OF WAY
 FROM DAINES DRIVE 250' STY**

**PRIVATE CONTRACT NO. 2223
 H.S. 44
 SHEET 1 OF 1 SHEET**

MAY, 1952
 PREPARED BY: *John V. Moran* P.E. 3187
 FOR: **LEGEND SEE: PLAN S-0-64**



RECEIVED
 OCT 23 1952
 L.A. COUNTY ENGINEER
 SANITATION DIVISION

NOTE:
 GRADES TO WHICH THIS IMPROVEMENT IS TO BE CONSTRUCTED ARE SHOWN ON PLANS AND PROFILE. GRADE POINTS FOR TOP OF CURB, CENTER LINE OF STREET OR CENTER LINE OF ALLEY ARE SHOWN BY CIRCLES ON PROFILES. AT ALL POINTS BETWEEN DESIGNATED POINTS THE GRADE SHALL BE ESTABLISHED SO AS TO CONFORM TO A STRAIGHT LINE DRAWN BETWEEN SAID DESIGNATED POINTS.
 ELEVATIONS ARE IN FEET ABOVE U.S.S. DATUM OR MEAN SEA LEVEL.
 THIS DRAWING AND THE DATA HEREON ARE HEREBY MADE A PART OF THE SPECIFICATIONS. WORK SHALL BE CONSTRUCTED ACCORDING TO SPECIFICATIONS ON FILE IN THE OFFICE OF THE COUNTY ENGINEER AND SHALL BE PROSECUTED ONLY IN THE PRESENCE OF THE COUNTY ENGINEER. BEFORE WORK CAN BE STARTED, THE CONTRACTOR MUST OBTAIN A PERMIT TO EXCAVATE IN COUNTY STREETS FROM THE L.A. COUNTY ROAD DEPT., 108 W. 2ND STREET, AND MAKE A DEPOSIT WITH THE COUNTY ENGINEER, 524 L.A. COUNTY ENGINEERING BLDG. SUFFICIENT TO COVER THE COST OF CONSTRUCTION INSPECTION AND RECORD PLANS.
 APPROVAL OF THIS PLAN BY THE COUNTY OF LOS ANGELES DOES NOT CONSTITUTE A REPRESENTATION AS TO THE ACCURACY OF THE LOCATION OF OR THE EXISTENCE OR NON-EXISTENCE OF ANY UNDERGROUND UTILITY WITHIN THE LIMITS OF THIS PROJECT.

COUNTY OF LOS ANGELES, CALIFORNIA
WILLIAM L. FOX COUNTY ENGINEER
 APPROVED BY: *[Signature]* CHIEF ENGINEER OF COUNTY SANITATION DISTRICT NO. 16
 ASST. CHIEF DEPUTY

APPROVED BY: *[Signature]* OFFICE ENGINEER
 DISTRICT NO. 16

Move Sewer to 13'E. of E.
 REVISION APPROVED *[Signature]* 10-20-52

CHECKED BY: *[Signature]* 8-7-52
 OFFICE OF THE COUNTY ENGINEER, REG. C.E. NO. 7860

RECEIVED
 OCT 23 1952
 L.A. COUNTY ENGINEER
 SANITATION DIVISION

RECEIVED
 OCT 23 1952
 L.A. COUNTY ENGINEER
 SANITATION DIVISION