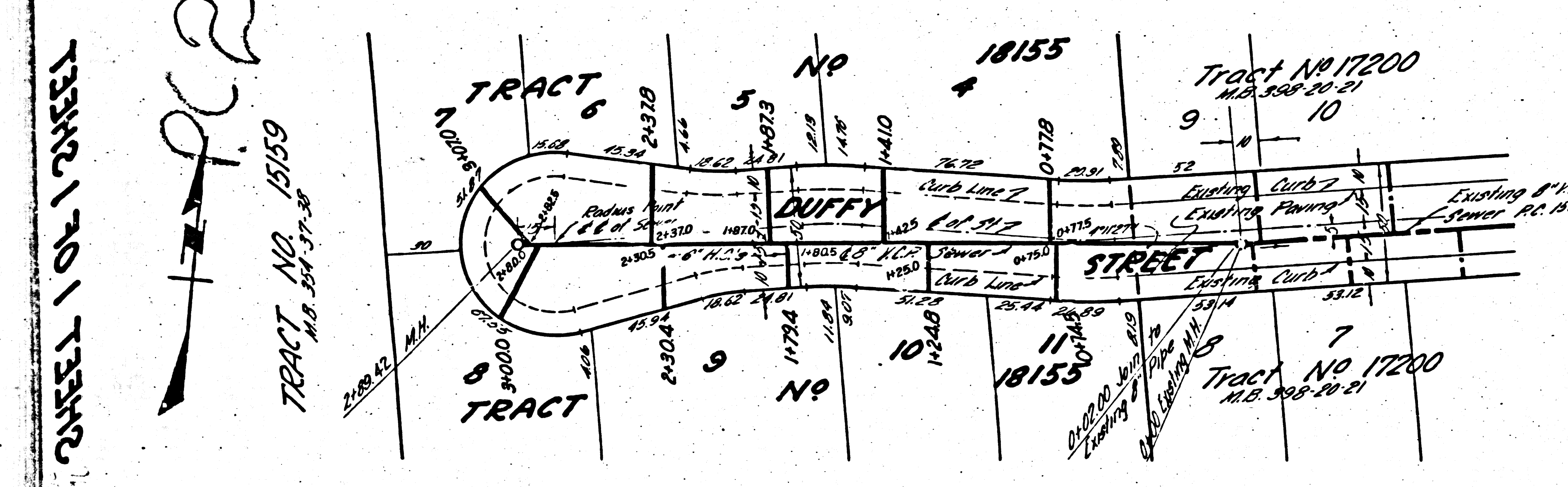


- 15.059
- (1) USE STANDARD MANHOLE FRAME AND COVER 5'-0" DIA.
 - (2) USE STANDARD STRENGTH PIPE
 - (3) USE CEMENT MORTAR FOR ALL UNGRADED CLAY PIPE JOINTS
 - (4) RESURFACE ALL TRENCH WITHIN PAVED AREA TO MEET LOS ANGELES COUNTY ROAD DEPT. REQUIREMENTS
 - (5) SANITARY HOUSE CONNECTIONS WITH INVERT AT PROPERTY LINE 5' BELOW CURB GRADE
 - (6) ENCASE 4'-0" FEET OF SEWER AT POINTS OF INTERFERENCE WITH PAVED SURF 9'-0" DIA.
 - (7) ALL STRUCTURES SHALL BE BRICK SEWER STRUCTURES 3'-0" DIA.
 - (8) PROVIDE STAKES ON PROPERTY LINE OR PROPERTY LINE PRODUCED AT RIGHT ANGLES TO THE SEWER LINE AT THE CENTER LINE OF EACH MANHOLE
 - (9) STOPPERS TO BE INSTALLED WITH JOINT COMPOUND BY THE MANUFACTURER AT THE PLANT OVER THE JOINT
 - (10) CONNECTIVE EQUIPMENT TO BE CUT NOT LESS THAN 2' IN LENGTH WITH CONCRETE SAW SPEC'S SEC. 25
 - (11) INSTALL WIRE AND TAPS PER SPEC'S SEC. 43

NOTE: THE REPRESENTATIVE OF THE COUNTY ENGINEER WILL SURVEY OR CAVE OUT ANY PORTION OF THE WORK. THE OWNER OR HIS AUTHORIZED REPRESENTATIVE SHALL FURNISH THE COUNTY ENGINEER WITH 7-8 SHEETS AND STATIONS OF ALL HOUSE CONNECTIONS AND SHALL PROVIDE STAKES AND THEM AT THEIR PROPER LOCATIONS WITH DESIGNING STAKES MARKED. ANY CHANGE IN LOCATION SHALL BE REQUESTED BY THE OWNER OR HIS REPRESENTATIVE. NO REVISIONS SHALL BE MADE IN THESE PLANS WITHOUT APPROVAL OF THE COUNTY ENGINEER. LOS ANGELES TRACT NO. 18155 ARE CONNECTED TO EXISTING SEWER IN LINE OAK AVENUE UNDER PERMITS 18122-18123 & 18129



INDEX MAP
P.C. 2235 J.M. F083
SCALE 1"=60'

Trim Line

**PROFILE, ALIGNMENT, AND GRADE OF
SANITARY SEWERS
TO BE CONSTRUCTED IN
A. DUFFY STREET**

**TRACT NO. 18155
PRIVATE CONTRACT NO. 2235
H.S. 44
SHEET 1 OF 1 SHEET**

SCALE: VERT. 1"=4'
HORIZ. 1"=40'

MAY 1952

PREPARED BY *John W. ...*

FOR LEGEND
SEE PLAN 5-68

NOTE: GRADES TO WHICH THIS IMPROVEMENT IS TO BE CONSTRUCTED ARE SHOWN ON PLANS AND PROFILE. GRADE POINTS FOR TOP OF CURB, CENTER LINE OF STREET, OR CENTER LINE OF ALLEY, ARE SHOWN BY CIRCLES ON PROFILES. AT ALL POINTS BETWEEN DESIGNATED POINTS THE GRADE SHALL BE ESTABLISHED SO AS TO CONFORM TO A STRAIGHT LINE BETWEEN SAID DESIGNATED POINTS. ELEVATIONS ARE IN FEET ABOVE U.S.S.'S DATUM OF MEAN SEA LEVEL. THIS DRAWING AND THE DATA HEREON ARE HEREBY MADE A PART OF THE SPECIFICATIONS. WORK SHALL BE CONSTRUCTED ACCORDING TO SPECIFICATIONS ON FILE IN THE OFFICE OF THE COUNTY ENGINEER AND SHALL BE PROSECUTED ONLY IN THE PRESENCE OF THE COUNTY ENGINEER. BEFORE WORK CAN BE STARTED, THE CONTRACTOR MUST OBTAIN A PERMIT TO EXCAVATE IN COUNTY STREETS FROM THE L.A. COUNTY ROAD DEPARTMENT, 211 30' PARK STREET AND MAKE DEPOSIT WITH THE COUNTY ENGINEER, 200 L.A. COUNTY ENGINEERING BLDG. SUFFICIENT TO COVER THE COST OF CONSTRUCTION INSPECTION AND RECORDED PLANS. APPROVAL OF THESE PLANS BY THE COUNTY OF LOS ANGELES DOES NOT CONSTITUTE A REPRESENTATION AS TO THE ACCURACY OF THE LOCATION OF OR THE EXISTENCE OR NON-EXISTENCE OF ANY UNDERGROUND UTILITY, PIPE OR STRUCTURE WITHIN THE LIMITS OF THIS PROJECT.

COUNTY OF LOS ANGELES, CALIFORNIA

JUL 24 1952

WILLIAM J. FOX, COUNTY ENGINEER
APPROVED BY: *[Signature]* CHIEF DEPUTY

A.M. RAYN
APPROVED BY: *[Signature]* OFFICE ENGINEER
COUNTY ENGINEER OF
COUNTY ENGINEERING
DISTRICT OFFICE
7-1-52

Checked 9-16-52 *[Signature]*

CHECKED BY: *[Signature]* 7-1-52
OFFICE OF THE COUNTY ENGINEER, 200 L.A. COUNTY ENGINEERING BLDG.

Trim Line