

TEMPLE CITY

15170

SANITARY SEWERS

TO BE CONSTRUCTED BY
BISBY STREET
FRANKMONT STREET
EAST OF 8TH ST.
ESTD. AVE.

PRIVATE CONTRACT NO 2240
W.B. Foss
ONE SHEET

PREPARED IN THE OFFICES OF
MURKEL & POWERS
Marshall A. Powers

FOR LEGEND
 See Plan No 6-a-64

NOTE:
 ELEVATIONS ARE IN FEET ABOVE U.S.S. DATUM OR MEAN SEA LEVEL.
 THIS DRAWING AND THE DATA HEREON ARE HEREBY MADE A PART OF THE SPECIFICATIONS.
 WORK SHALL BE CONSTRUCTED ACCORDING TO SPECIFICATION ON FILE IN THE OFFICE OF THE COUNTY ENGINEER AND SHALL BE PROSECUTED ONLY IN THE PRESENCE OF THE COUNTY ENGINEER.
 BEFORE WORK CAN BE STARTED THE CONTRACTOR MUST OBTAIN A PERMIT TO LOCATE & CONSTRUCT STREETS FROM LOS ANGELES COUNTY ROAD DEPARTMENT, FOR WEST 8TH ST. AND MAKE A DEPOSIT WITH THE COUNTY ENGINEER, THE COUNTY ENGINEERING BUILDING SUFFICIENT TO COVER COST OF CONSTRUCTION INSPECTION AND RECORD PLANS.
 IF WORK IS TO BE DONE IN A STATE HIGHWAY, A PERMIT MUST BE OBTAINED FROM THE STATE OF CALIFORNIA, DIVISION OF HIGHWAYS, 126 SOUTH BRIDGE ST. AFTER HAVING THE ROADWAY WITH THE COUNTY ENGINEER.
 APPROVAL OF THIS PLAN BY THE COUNTY OF LOS ANGELES DOES NOT CONSTITUTE A REPRESENTATION AS TO THE ACCURACY OF THE LOCATION OF, OR THE EXISTENCE OR NON-EXISTENCE OF ANY UNDERGROUND UTILITY PIPE OR STRUCTURE WITHIN THE LIMITS OF THIS PROJECT.

COUNTY OF LOS ANGELES, CALIFORNIA
 APPROVED **WILLIAM J. FOX** COUNTY ENGINEER
 APPROVED **A.M. BROWN** CHIEF ENGINEER OF COUNTY SANITATION DISTRICT NO 15
 BY *W. J. Fox* CHIEF DEPUTY
 BY *A. M. Brown* OFFICE ENGINEER

CHECKED BY *H.L. ...*
 OFFICE OF COUNTY ENGINEER RENEWELL

U.C. CHECKED
 NO. 6-19-52

INDEX MAP

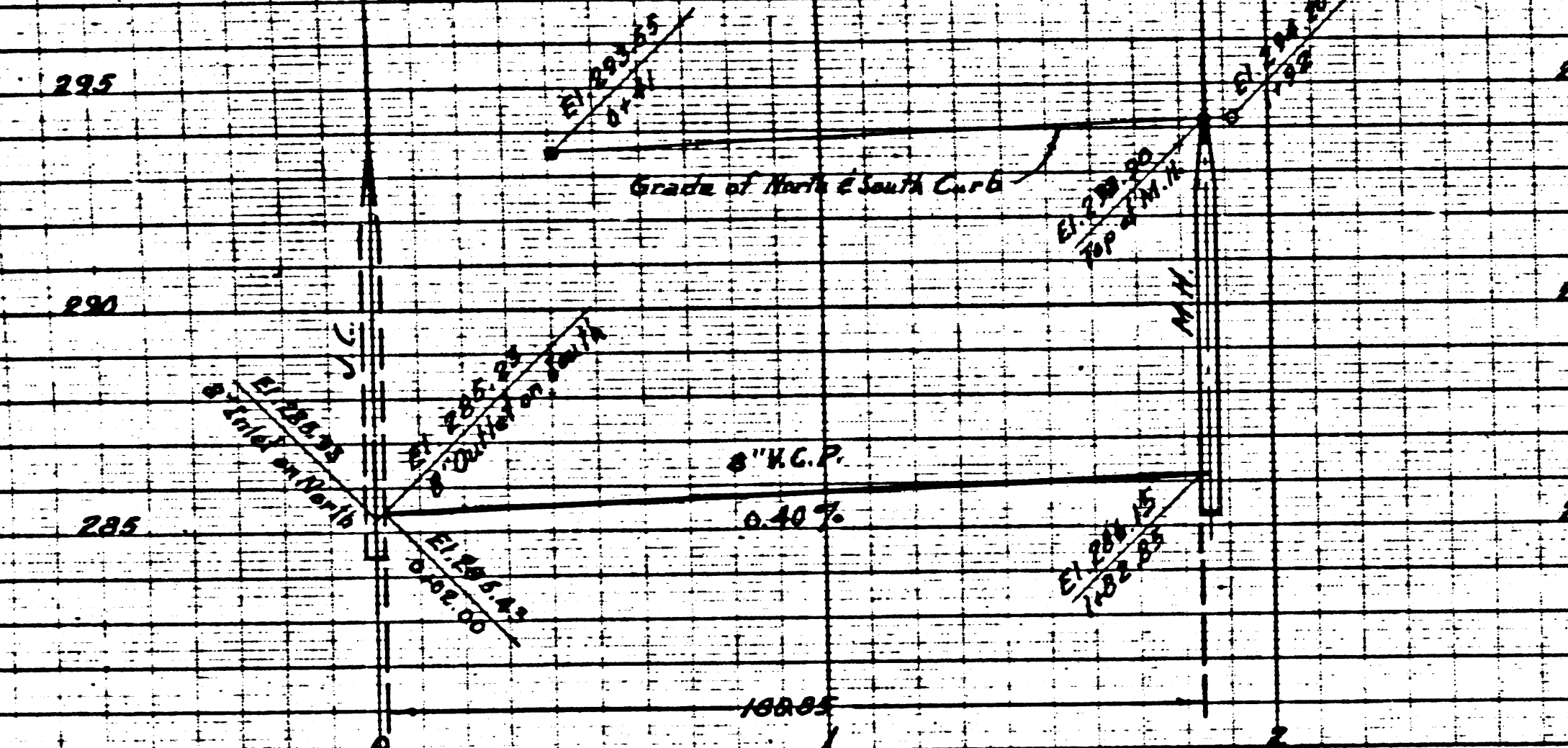
TRACT No 17491
 P.C. 2240 J.N. Foss
 Scale 1" = 600'

JUL 24 1952
 COUNTY OF LOS ANGELES

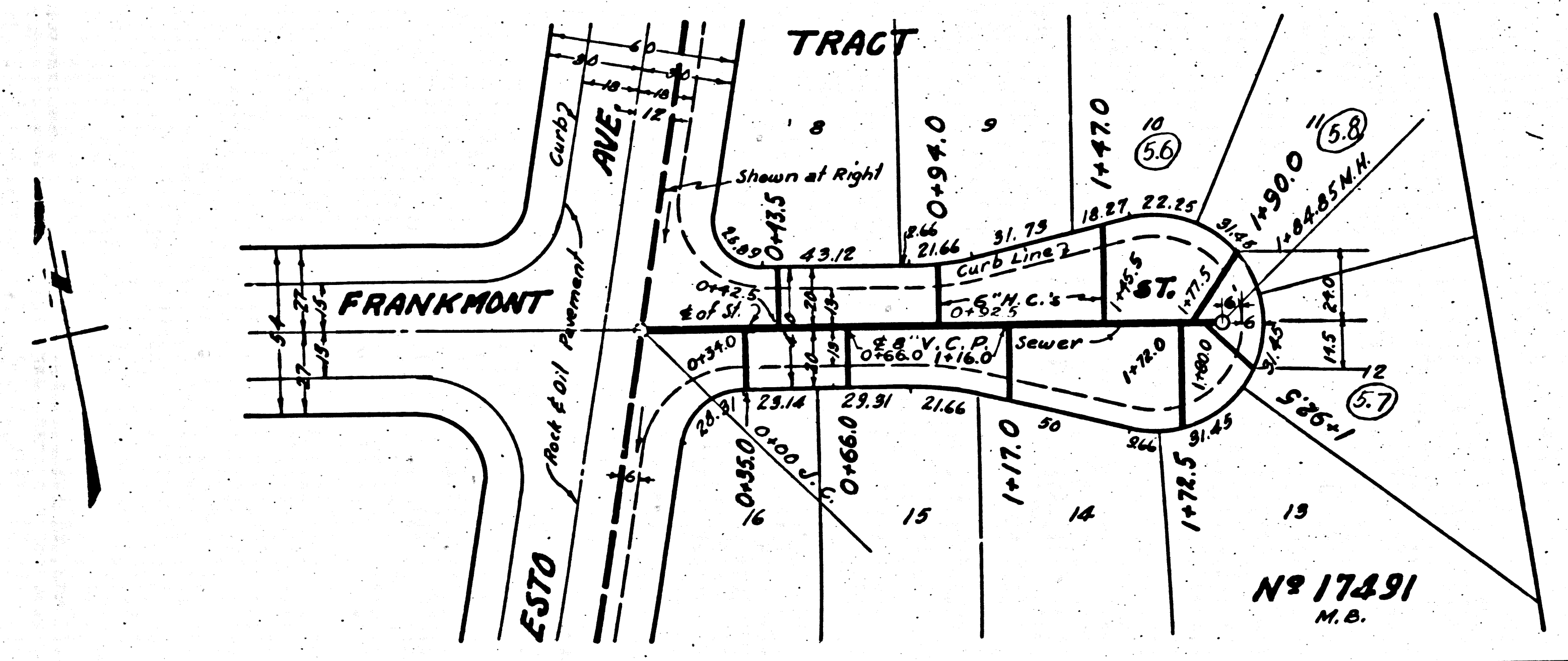
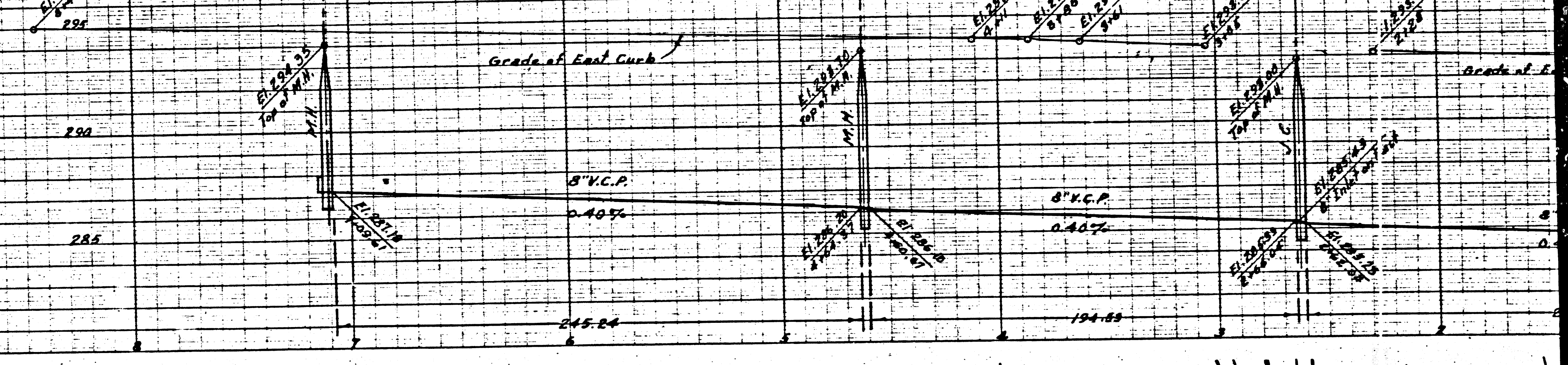
checked 10-9-52 *H.L. ...*

W.B. FOSS
 P.C. 2240

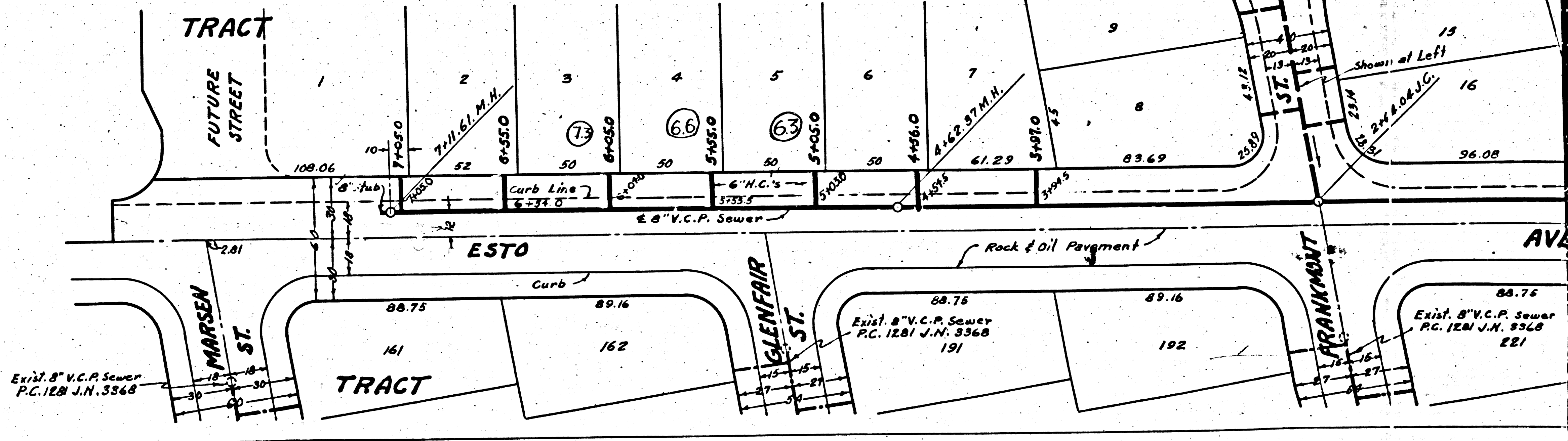
(B) 15,172



(A)



N^o 17491
M.B.



Exist. 8\"/>

Exist. 8\"/>

Exist. 8\"/>

(2)

