

WHITTIER

B.M. SY. 2470, Full A Blvd, Cit. Luch	
Ret. of NE Cor. Loch Avon Drive and	
Passena Blvd. Elev. 176.860	

(19,357)

USE STANDARD STRENGTH PIPE EXCEPT AS NOTED
 USE CEMENT MORTAR FOR ALL VITRIFIED CLAY PIPE JOINTS
 ENCASE FOUR FEET OF SEWER AT POINTS OF INTERFERENCE WITH POLES AS PER S-4-115
 CONSTRUCT HOUSE CONNECTIONS WITH INVERT AT PROP. LINE 6 FEET BELOW CURB GRADE EXCEPT AS NOTED
 ALL STRUCTURES SHALL BE BRICK SEWER STRUCTURES AS PER PLAN NO. S-2-104
 USE STANDARD MANHOLE FRAMES AND COVERS AS PER PLAN NO. S-2-117
 CONSTRUCT TOPS OF ALL STRUCTURES IN RIGHTS OF WAY 6" ABOVE FINISHED GRADE
 RESURFACE ALL TRENCHES WITHIN PAVED AREA TO MEET LOS ANGELES COUNTY ROAD DEPT. OR STATE HIGHWAY REQUIREMENTS IN ACCORDANCE WITH PERMIT
 PROVIDE STAKES ON THE PROPERTY LINES OR PROPERTY LINES PRODUCED, AT RIGHT ANGLES TO THE SEWER LINE AT THE CENTER LINE OF EACH MANHOLE
 NO REVISIONS SHALL BE MADE IN THESE PLANS WITHOUT APPROVAL OF THE COUNTY ENGINEER
 NO REPRESENTATIVE OF THE COUNTY ENGINEER WILL SURVEY OR LAY OUT ANY PORTION OF THE WORK
 THE OWNER OR HIS AUTHORIZED REPRESENTATIVE SHALL FURNISH THE COUNTY ENGINEER WITH GRADE SHEETS AND STATIONS OF ALL HOUSE CONNECTIONS AND Y BRANCHES AND SHALL PROVIDE STAKES FOR THEM AT THEIR PROPER LOCATIONS WITH STATIONING PLAINLY MARKED
 ANY CHANGE OF LOCATION SHALL BE REQUESTED IN WRITING BY THE OWNER OR HIS REPRESENTATIVE

(1)

**PROFILE ALIGNMENT AND GRADE OF
 SANITARY SEWERS
 TO BE CONSTRUCTED IN
 TRACT NO 16590**

**LOCH LOMOND DR.
 BETWEEN CITRONELL AVE. AND A POINT 115' N.W. WY
 LOCH AVON DR.
 BETWEEN CITRONELL AVE. AND A POINT 114' N.W. WY
 CATHERINE ST.
 BETWEEN CITRONELL AVE. AND A POINT 111' N.W. WY**

**PRIVATE CONTRACT NO. 2266
 W. S. 36**

SHEET 1 OF 2 SHEETS

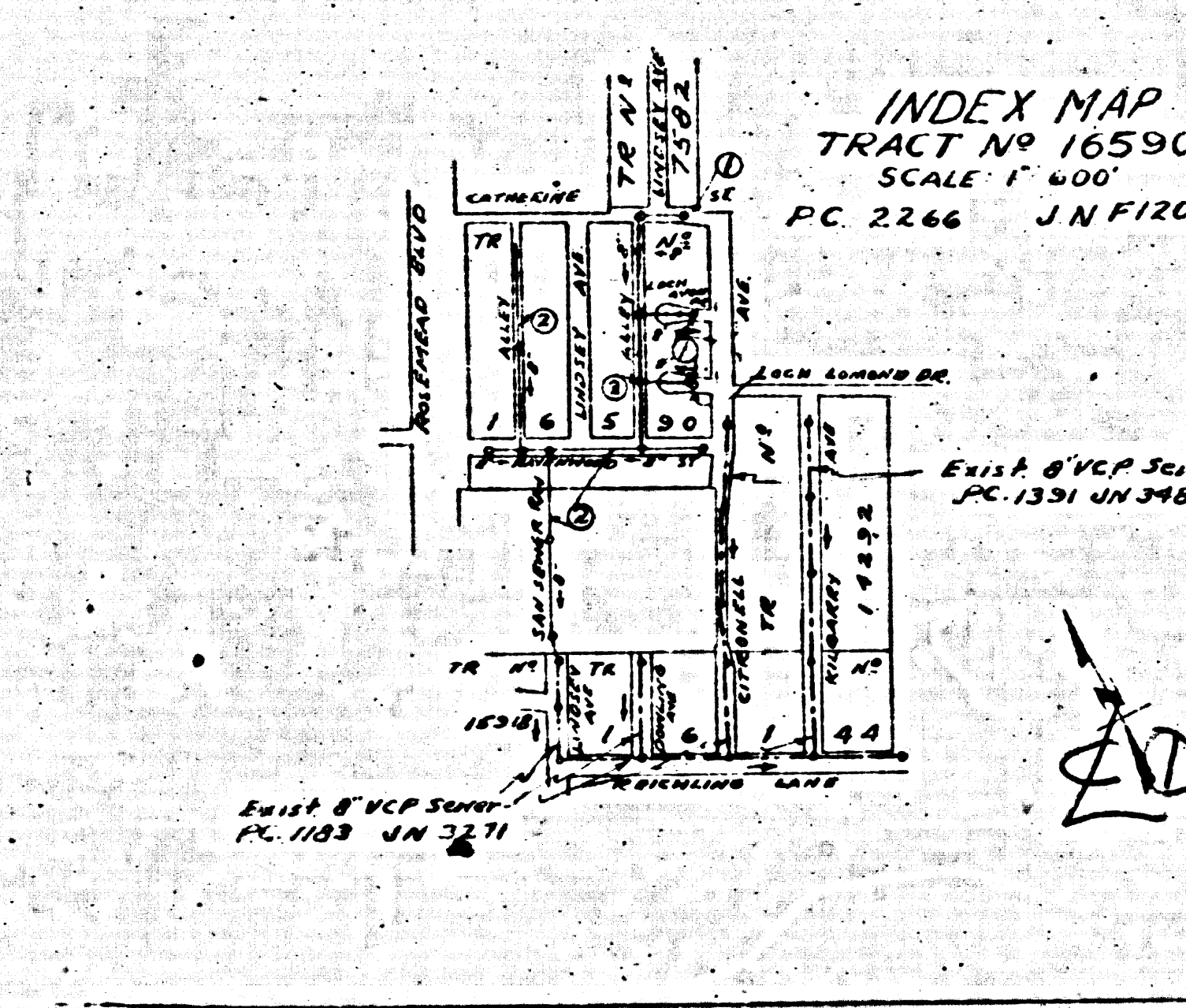
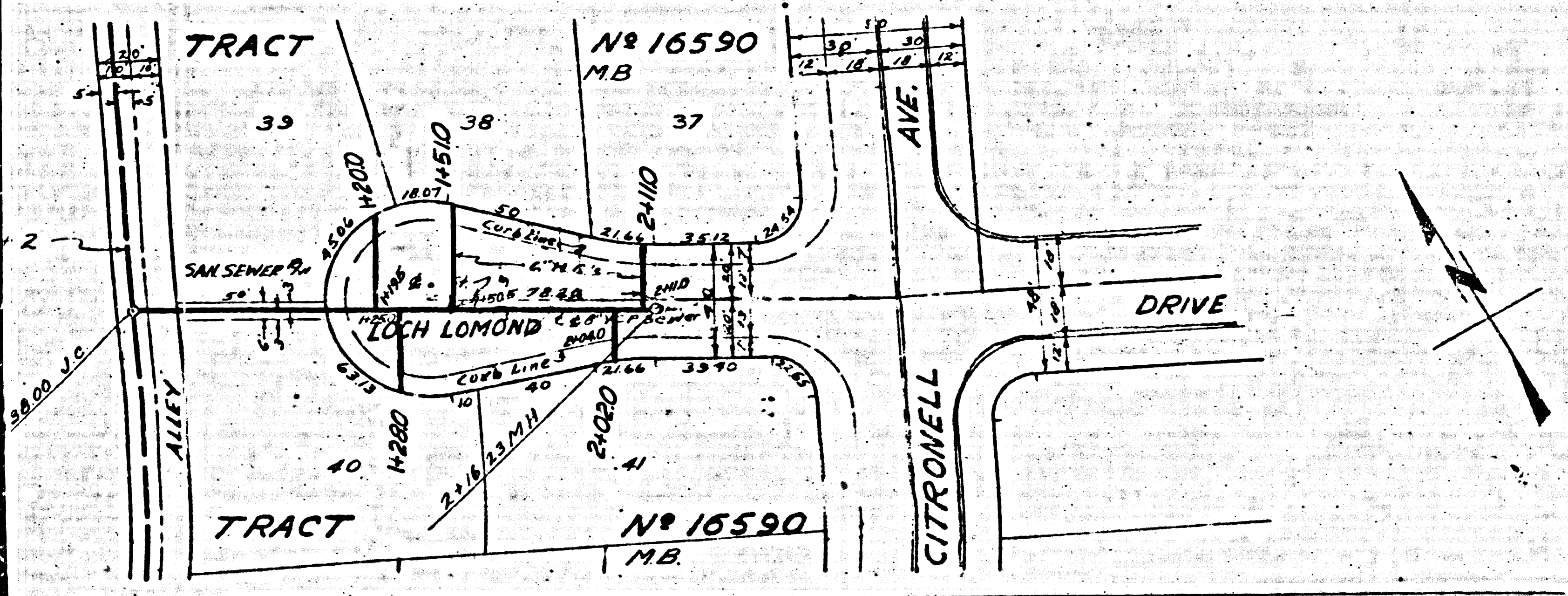
SCALE: VERT. 1"=4'
 HORIZ. 1"=40'

JUNE 1952

PREPARED IN THE OFFICES OF
KEMMERER ENG. CO. INC.
 BY: *W. J. Fox*
 W. J. Fox, Inc.
 100 S. W. 1st St.
 Los Angeles, California

FOR LEGEND
 SEE PLAN NO. S-2-54

NOTE
 GRADES TO WHICH THIS IMPROVEMENT IS TO BE CONSTRUCTED ARE SHOWN ON PLANS AND PROFILES
 GRADE POINTS FOR TOP OF CURB, CENTER LINE OF STREET OR CENTER LINE OF ALLEY ARE SHOWN BY
 CIRCLES ON PROFILES AT ALL POINTS BETWEEN DESIGNATED POINTS THE GRADE SHALL BE ESTABLISHED
 SO AS TO CONFORM TO A STRAIGHT LINE DRAWN BETWEEN SAID DESIGNATED POINTS
 ELEVATIONS ARE IN FEET ABOVE U. S. C. & G. DATUM OR MEAN SEA LEVEL
 THIS DRAWING AND THE DATA HEREON ARE HEREBY MADE A PART OF THE SPECIFICATIONS
 WORK SHALL BE CONSTRUCTED ACCORDING TO SPECIFICATIONS ON FILE IN THE OFFICE OF THE
 COUNTY ENGINEER AND SHALL BE PROSECUTED ONLY IN THE PRESENCE OF THE COUNTY ENGINEER
 BEFORE WORK CAN BE STARTED THE CONTRACTOR MUST OBTAIN A PERMIT TO EXCAVATE IN
 COUNTY STREETS FROM THE L. A. COUNTY ROAD DEPT. 108 W. 5th ST. LOS ANGELES AND MAKE A DEPOSIT
 WITH THE COUNTY ENGINEER BOND AT 108 W. 5th ST. SUFFICIENT TO COVER THE COST OF
 CONSTRUCTION INSPECTION AND RECORD PLANS
 IF WORK IS TO BE DONE IN A STATE HIGHWAY, A PERMIT MUST BE OBTAINED FROM THE STATE
 OF CALIFORNIA DIVISION OF HIGHWAYS, 808 STATE BUILDING, AFTER MAKING THE DEPOSIT WITH THE
 COUNTY ENGINEER



STOPPERS TO BE INSTALLED WITH JOINT COMPOUND BY MANUFACTURER AT HIS PLANT. SPECIFICATIONS - SECTION 33, 48.
 CONCRETE PAVEMENT TO BE CUT NOT LESS THAN 2 INCHES IN DEPTH WITH CONCRETE SAW. SPECIFICATIONS - SECTION 65.
 INSTALL WIRE & TAGS PER SPECS SEC. 48

APPROVAL OF THIS PLAN BY THE COUNTY OF LOS ANGELES DOES NOT CONSTITUTE A REPRESENTATION AS TO THE ACCURACY OF THE LOCATION OF, OR THE EXISTENCE OR NON-EXISTENCE OF, ANY UNDERGROUND UTILITY, PIPE OR STRUCTURE WITHIN THE LIMITS OF THIS PROJECT. (THIS NOTE APPLIES TO ALL SHEETS)

WHERE GROUND WATER IS ENCOUNTERED, WESTON'S GASKETS AND FORMS SHALL BE USED PER S-2-51.

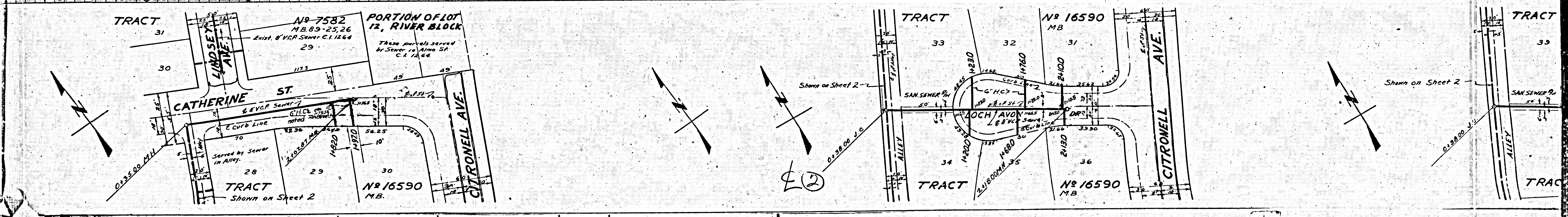
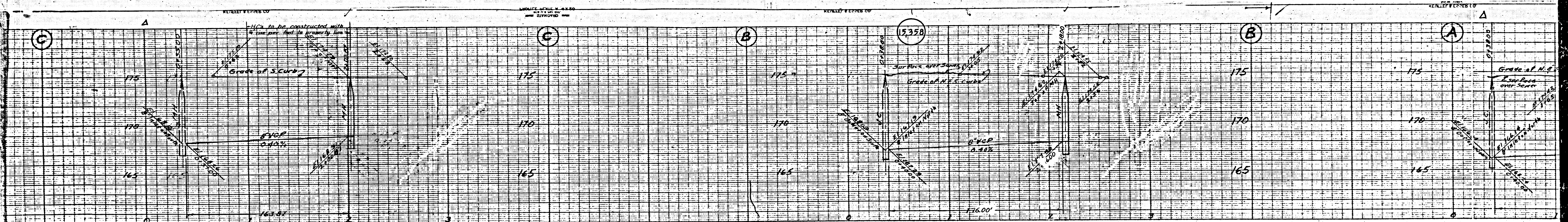
COUNTY OF LOS ANGELES, CALIFORNIA
 WILLIAM J. FOX, County Engineer

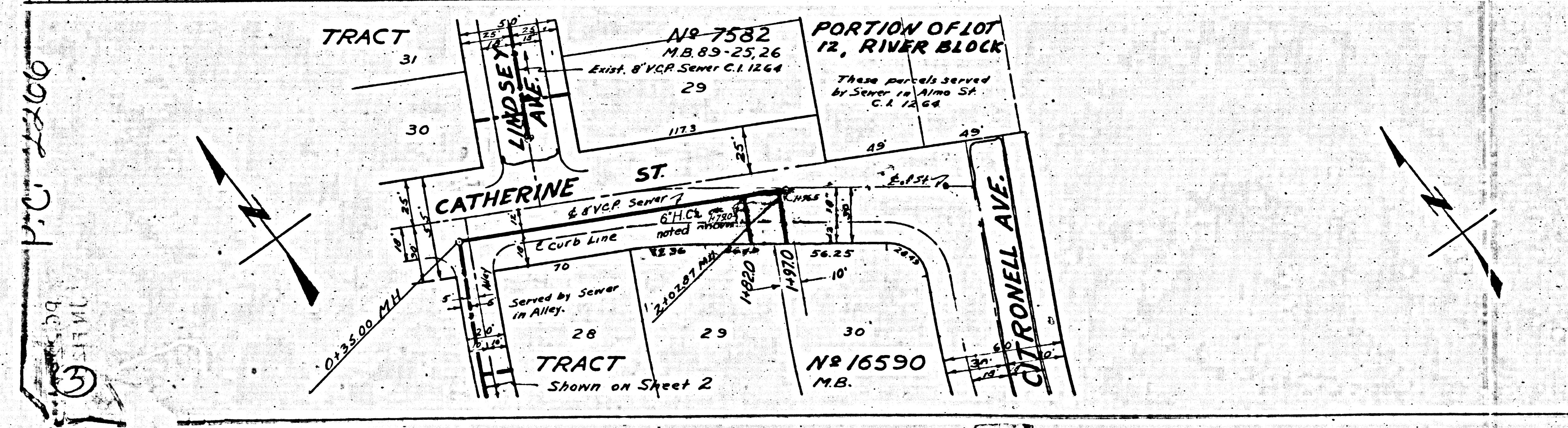
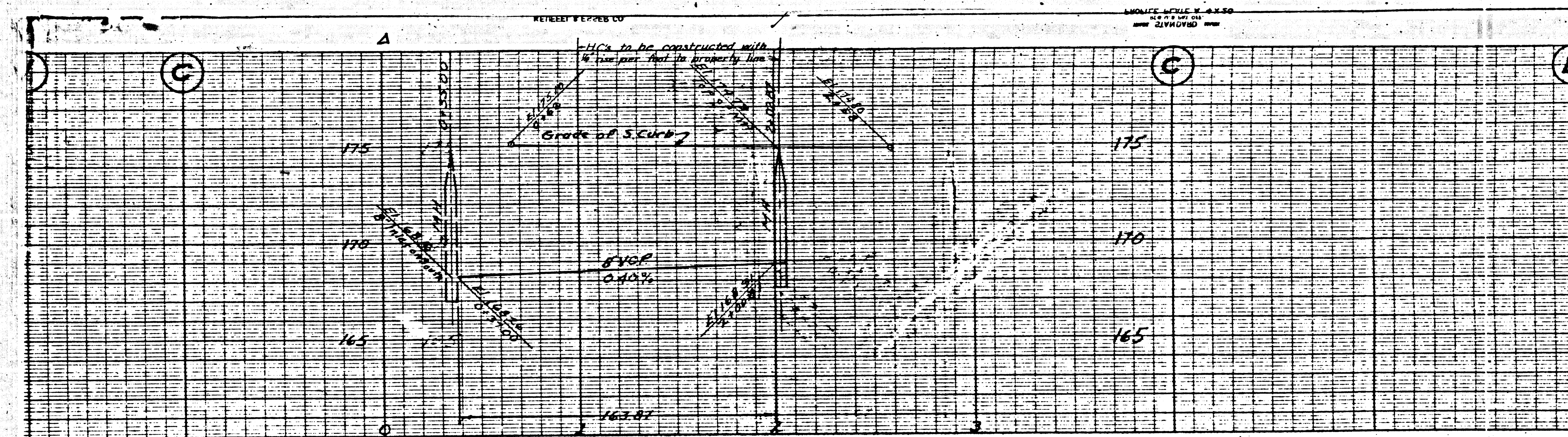
APPROVED: *W. J. Fox*
 W. J. Fox, Inc.
 100 S. W. 1st St.
 Los Angeles, California

APPROVED BY: *W. J. Fox*
 W. J. Fox, Inc.
 100 S. W. 1st St.
 Los Angeles, California

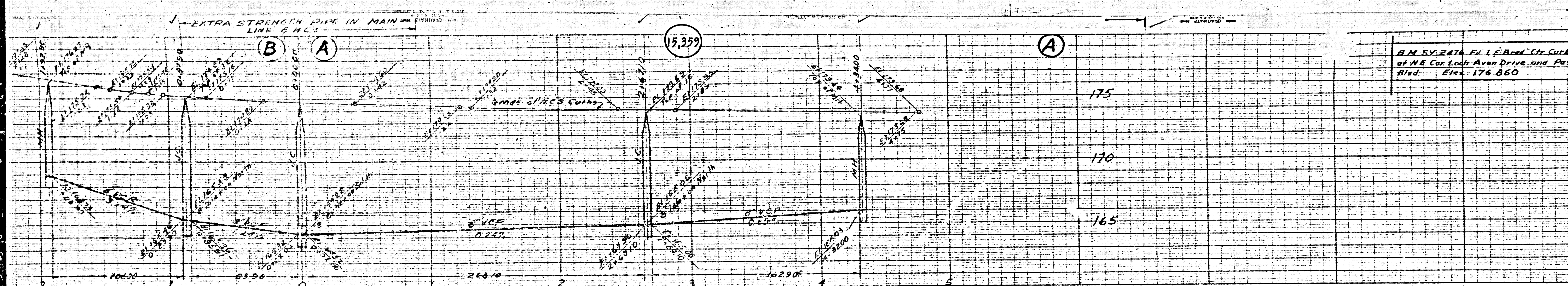
CHECKED BY: *Richard K. Kuhn*
 RICHARD K. KUHN, CIVIL ENGINEER
 1118 S. W. 1st St.
 Los Angeles, California

11-18-52-16590



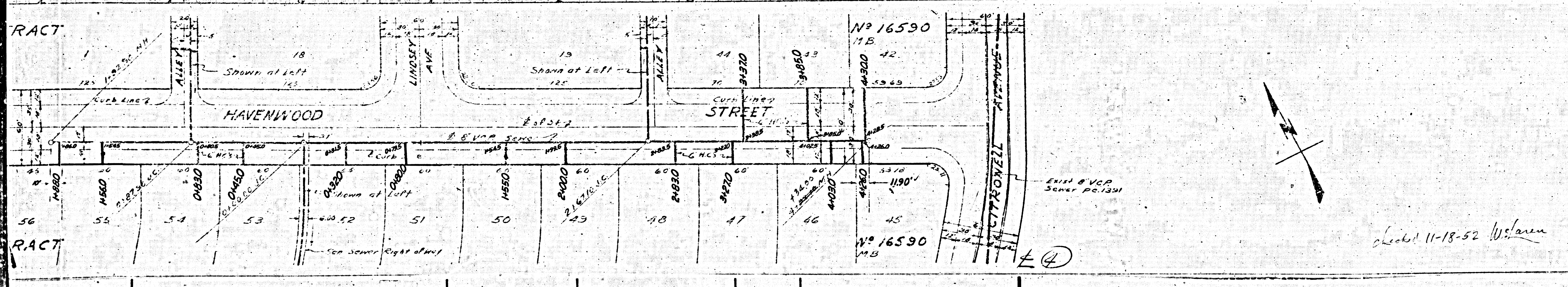


P.C. 2200
 111111
 3



PROFILE ALIGNMENT AND GRADE OF
SANITARY SEWERS
 TO BE CONSTRUCTED IN
 TRACT NO. 16590
HAVENWOOD STREET
 BETWEEN ROSEMEAD BLVD AND CATHARINE AVENUE
FIRST ALLEY EAST OF LINDSEY AVE
 BETWEEN HAVENWOOD ST AND CATHARINE STREET
FIRST ALLEY EAST OF ROSEMEAD BLVD
 BETWEEN HAVENWOOD ST AND CATHARINE STREET
SANITARY SEWER R/W
 BETWEEN HAVENWOOD ST AND CATHARINE STREET
 PRIVATE CONTRACT NO. 2006
 W.S. 361
 SHEET 2 OF 2 SHEETS

SCALE: VERT. 1" = 10'
 HORIZ. 1" = 100'

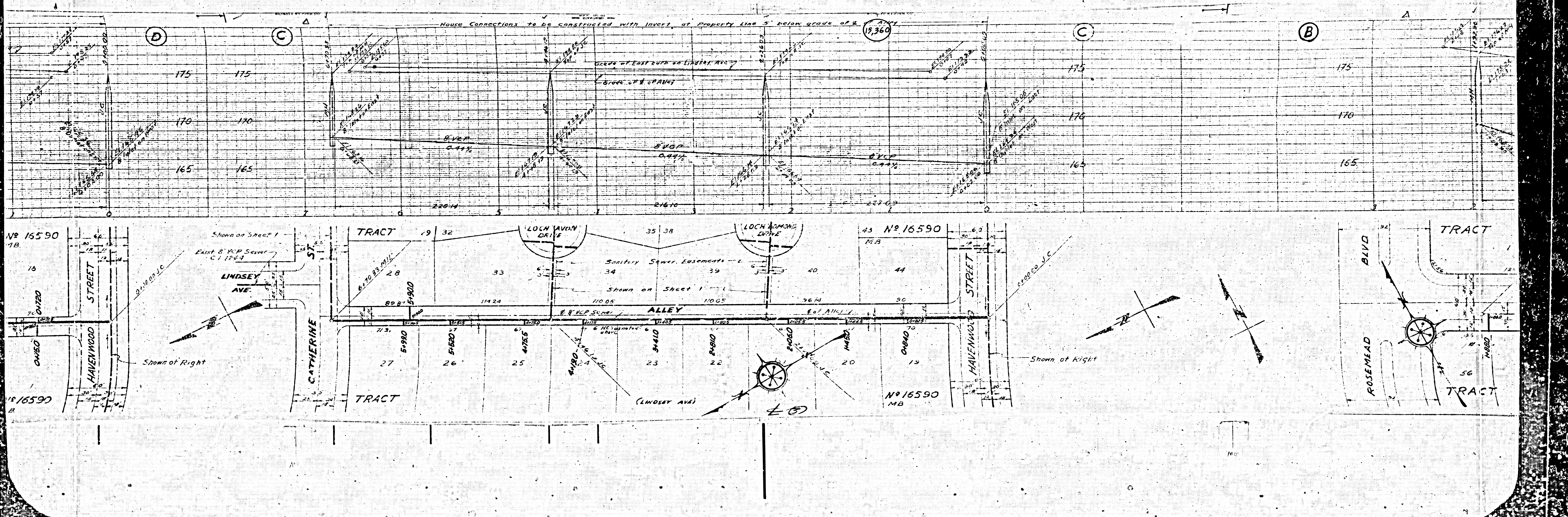


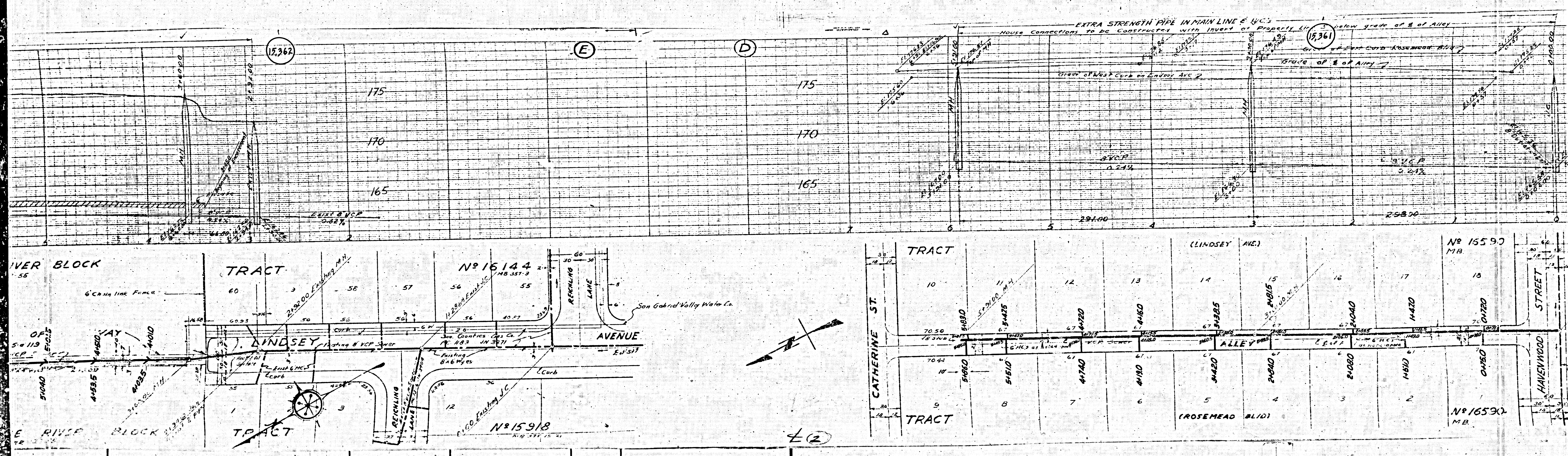
PREPARED IN THE OFFICE OF
 KEMMERER ENGR CO., INC.
 BY: *W. J. Fox*
 REG. C.E. NO. 1461
 FOR LEGEND
 SEE PLAN NO. S-466
 FOR CONSTRUCTION NOTES SEE SHEET 1

APPROVED: *W. J. Fox* COUNTY ENGINEER
 BY: *W. J. Fox* CHIEF DEPUTY
 A. M. RAW... OFFICE ENGINEER
 CHIEF OF DIVISION OF COUNTY SANITATION DISTRICT 2

CHECKED BY: *Robert S. Kubler* 8-26-52
 OFFICE OF COUNTY ENGINEER REG. C.E. NO. 2460

Check: 11-13-52 *W. J. Fox*





15362

E

D

15361

EXTRA STRENGTH PIPE IN MAIN LINE & V.C.P.'s
HOUSE CONNECTIONS TO BE CONSTRUCTED WITH INVERT OF PROPOSED L.I.P. 2' BELOW GRADE OF E OF ALLEY

Grade of West Curb on Lindsey Ave. 2'

V.C.P.
0.24%

L.I.P.
0.24%

EXIST. V.C.P.
0.22%

291.00

258.00

RIVER BLOCK

TRACT

NO 16144
M.B. 357-3

AVENUE

E RIVER BLOCK

TRACT

NO 15918
M.B. 357-3

TRACT

(LINDSEY AVE.)

NO 16590
M.B.

CATHERINE ST.

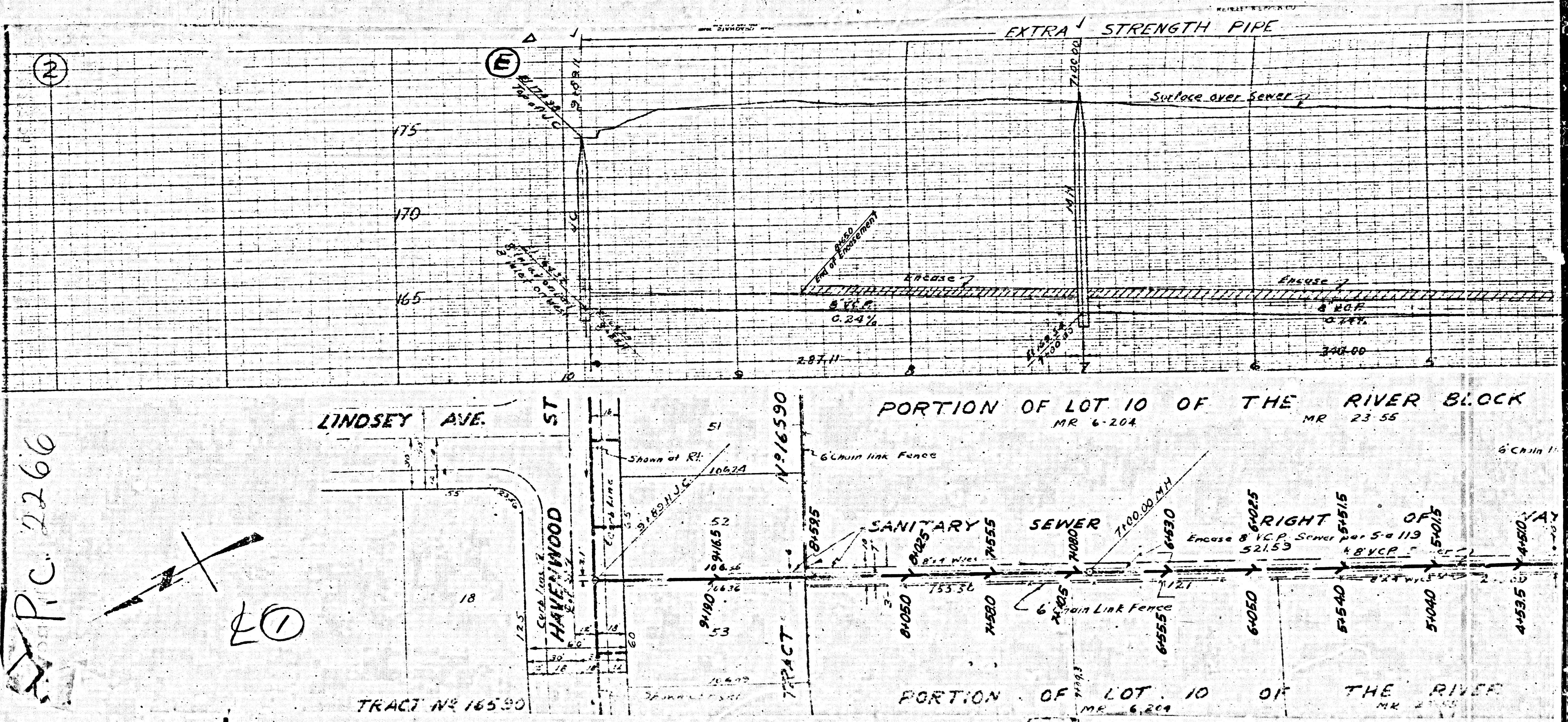
TRACT

(ROSEHEAD BLVD)

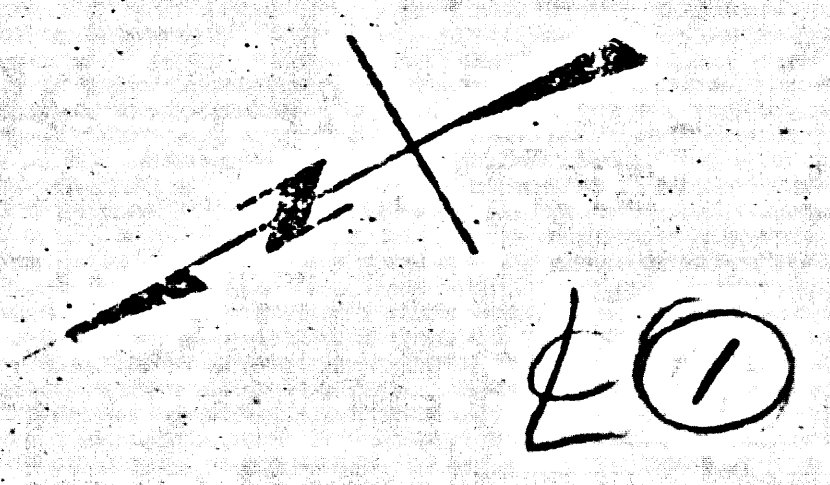
NO 16590
M.B.

HAWKWOOD STREET

②



P.C. 2266



②

①

75

70

65

EXTRA STRENGTH PIPE

Surface over Sewer

0.24%

0.24%

287.11

348.00

LINDSEY AVE. ST

HAWKWOOD ST

TRACT N° 16590

PORTION OF LOT 10 OF THE RIVER BLOCK
MR 6-204 MR 23-56

TRACT N° 16590

PORTION OF LOT 10 OF THE RIVER
MR 6-204 MR 23-56

SANITARY SEWER

700.00

RIGHT OF WAY

521.53

5119

51015

51015

4535

6005

6005

6005

6005

6005

6005

6005

6005

6005

6005

6005

6005

6005

6005

6005

6005

6005

6005

6005

6005

6005

6005

6005

6005

6005

6005

6005

6005

6005

6005

6005

6005

6005

6005

6005

6005

6005

6005

6005

6005

6005

6005

6005

6005

6005

6005

6005

6005