

USE STANDARD STRUT PIPE EXCEPT AS NOTED
 USE CEMENT MORTAR JOINTS VITRIFIED CLAY PIPE JOINTS
 ENCASE FOUR FEET OF SLEEVES AT POINTS OF INTERFERENCE WITH POLES AS PER S-4115
 CONSTRUCT HOUSE CONNECTIONS WITH INVERT AT POOR LINE 6 FEET BELOW CURB GRADE EXCEPT AS NOTED
 ALL STRUCTURES SHALL BE BRICK SEWER STRUCTURES AS PER PLAN NO. S-6-104 EXCEPT AS NOTED
 USE STANDARD MANHOLE FRAMES AND COVERS AS PER PLAN NO. S-6-117 EXCEPT AS NOTED
 CONSTRUCT TOPS OF ALL STRUCTURES IN RIGHTS OF WAY 6" ABOVE FINISHED GRADE
 RESURFACE ALL TRENCHES WITHIN PAVED AREA TO MEET LOS ANGELES COUNTY ROAD DEPT. OR STATE HIGHWAY REQUIREMENTS IN ACCORDANCE WITH PERMIT
 PROVIDE STAKES ON THE PROPERTY LINES OR PROPERTY LINES PRODUCED AT RIGHT ANGLES TO THE SEWER LINE AT THE CENTER LINE OF EACH MANHOLE
 FOR CHANGE IN LEGS: SEE SPEC'S SEC 49
 NO REVISIONS SHALL BE MADE IN THESE PLANS WITHOUT APPROVAL OF THE COUNTY ENGINEER
 NO REPRESENTATIVE OF THE COUNTY ENGINEER WILL SURVEY OR LAY OUT ANY PORTION OF THE WORK
 THE OWNER OR HIS AUTHORIZED REPRESENTATIVE SHALL FURNISH THE COUNTY ENGINEER WITH GRADE SHEETS AND STATIONS OF ALL HOUSE CONNECTIONS AND Y BRANCHES AND SHALL PROVIDE STAKES FOR THEM AT THEIR PROPER LOCATIONS WITH STATIONING PLAINLY MARKED
 ANY CHANGE OF LOCATION SHALL BE REQUESTED IN WRITING BY THE OWNER OR HIS REPRESENTATIVE

STOPPERS TO BE INSTALLED WITH JOINT COMPOUND BY MANUFACTURER AT HIS PLANT SPECIFICATIONS - SECTION 33.48
 CONCRETE PAVEMENT TO BE CUT NOT LESS THAN 2 INCHES IN DEPTH WITH CONCRETE SAW SPECIFICATIONS - SECTION 65
 INSTALL WIRE TAGS PER SPEC'S SECTION 48

APPROVAL OF THIS PLAN BY THE COUNTY OF LOS ANGELES DOES NOT CONSTITUTE A REPRESENTATION AS TO THE ACCURACY OF THE LOCATION OF, OR THE EXISTENCE OR NON-EXISTENCE OF ANY UNDERGROUND UTILITY, PIPE OR STRUCTURE WITHIN THE LIMITS OF THIS PROJECT
 (THIS NOTE APPLIES TO ALL SHEETS)

WHERE GROUND WATER IS ENCOUNTERED, WESTON'S GASKETS AND FORMS SHALL BE USED, PER S-9-51, IN MAIN LINE AND HOUSE CONNECTIONS.

Trim Line 3

PROFILE ALIGNMENT AND GRADE OF
SANITARY SEWERS
 TO BE CONSTRUCTED IN
TRACT NO 18308
EMPEROR AVE.
 Between Golden West Ave and a Pt. 630 ft. Easterly

PRIVATE CONTRACT NO. 2289
 W. S. 44
 SHEET 1 OF 1 SHEETS
 SCALE: VERT. 1" = 4' HORIZ. 1" = 40' JULY 1952

PREPARED IN THE OFFICES OF
 BARNETT, HOPEN & SMITH
 BY: Harold A. Barnett
 INC. C.E. NO. 7376

FOR LEGEND
 SEE PLAN NO S-6-84

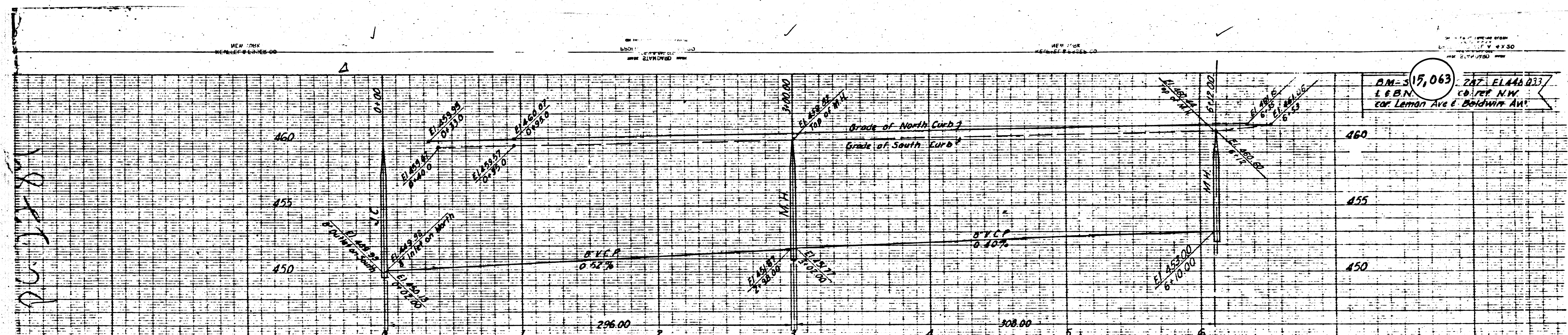
NOTE: GRADES TO WHICH THIS IMPROVEMENT IS TO BE CONSTRUCTED ARE SHOWN ON PLANS AND PROFILES GRADE POINTS FOR TOP OF CURB, CENTER LINE OF STREET OR CENTER LINE OF ALLEY ARE SHOWN BY CIRCLES ON PROFILES AT ALL POINTS BETWEEN DESIGNATED POINTS THE GRADE SHALL BE ESTABLISHED SO AS TO CONFORM TO A STRAIGHT LINE DRAWN BETWEEN SAID DESIGNATED POINTS
 ELEVATIONS ARE IN FEET ABOVE U. S. C. & G. DATUM OR MEAN SEA LEVEL
 THIS DRAWING AND THE DATA HEREON ARE HEREBY MADE A PART OF THE SPECIFICATIONS
 BEFORE WORK CAN BE STARTED, THE CONTRACTOR MUST OBTAIN A PERMIT TO EXCAVATE IN COUNTY STREETS FROM THE L. A. COUNTY ROAD DEPT. JOB W. S. 44-51, LOS ANGELES AND MAKE A DEPOSIT WITH THE COUNTY ENGINEER, ROOM 824 AT 10th & 5th STREETS, SUFFICIENT TO COVER THE COST OF CONSTRUCTION INSPECTION AND RECORD PLANS
 IF WORK IS TO BE DONE IN A STATE HIGHWAY, A PERMIT MUST BE OBTAINED FROM THE STATE OF CALIFORNIA, DIVISION OF HIGHWAYS, 808 STATE BUILDING, AFTER MAKING THE DEPOSIT WITH THE COUNTY ENGINEER.

COUNTY OF LOS ANGELES, CALIFORNIA
 WILLIAM A. FOX County Engineer
 APPROVED: Anna D. Hall
 ASST. CHIEF DEPUTY
 APPROVED BY: A. M. Rahn OFFICE ENGINEER
 SUPERVISOR OF DISTRICT
 DISTRICT NO. 15
 CHECKED BY: R. E. Kellerman JUL 21 1952
 OFFICE OF COUNTY ENGINEER, 812 C. E. NO. 1200

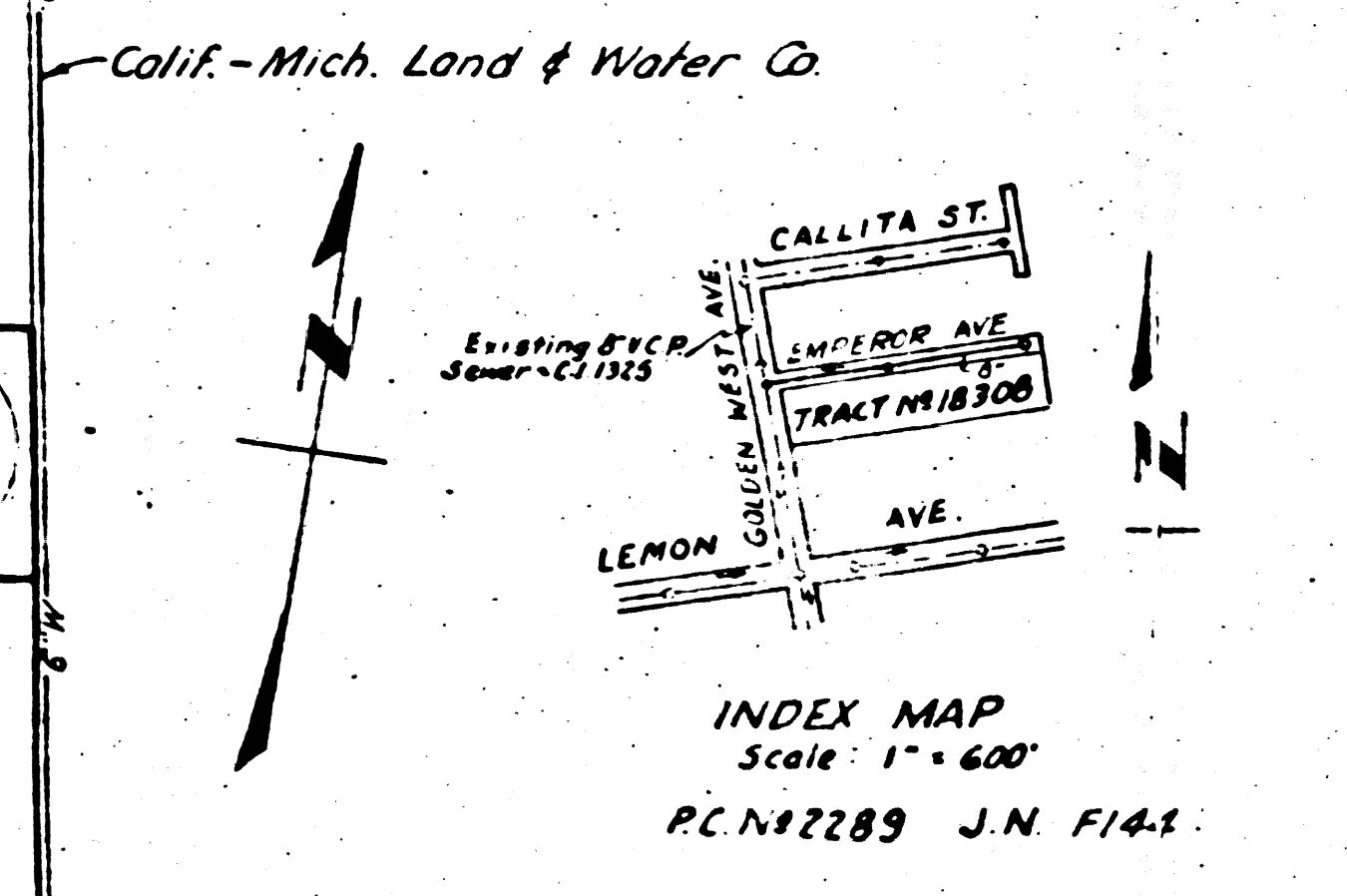
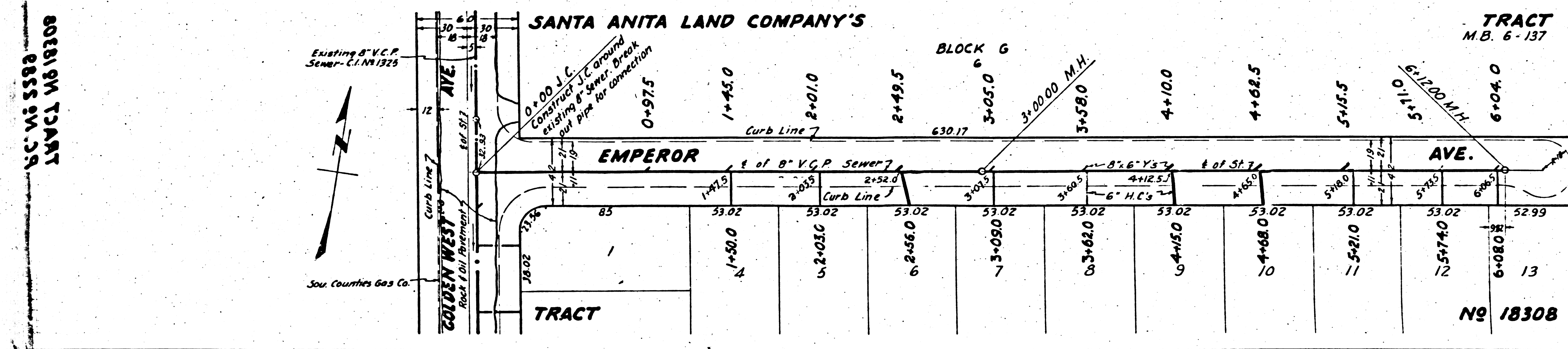
Checked 9-16-52 W. L. Laram

Trim Line 4

C. E. NO. 5589
 15th & 11th St.
 LOS ANGELES 18308
 BC 5589 09



P.M. 15,063
 L & B.M.
 cor Lemon Ave & Baldwin Ave



BOBIGNY TRACT
 S85 SW 2A

10