

PC 2291
PAGE 2
J.N. F146

17,855

BELLFLOWER BLDG. DIST. 4

B.M. 57 1440 E.I. 56.961
Lead of Brass tack in center of
return at N.E. cor. of Hedda St
and Clark Ave.

- ✓ USE STANDARD STRENGTH PIPE EXCEPT AS NOTED.
- ✓ USE SEWER JOINT COMPOUND "A" FOR ALL VITRIFIED CLAY PIPE JOINTS PER SPEC'S. SEC. 31.47.
- ✓ ALL STRUCTURES SHALL BE BRICK SEWER STRUCTURES AS PER PLAN NO. S-a-104.
- ✓ USE STANDARD MANHOLE FRAMES AND COVERS AS PER PLAN NO. S-a-117.
- ✓ RESURFACE TRENCH WITHIN PAVED AREA WITH PREMIX ROCK AND OIL IN ACCORDANCE WITH PERMIT.
- ✓ STOPPERS TO BE INSTALLED WITH JOINT COMPOUND BY MANUFACTURER AT HIS PLANT. SEE SEC. 39, 50 OF SPECIFICATIONS.
- ✓ FOR LEAKAGE TEST USE FORMULA #91, PER SPEC'S. SEC. 51.

**PROFILE ALIGNMENT AND GRADE OF
SANITARY SEWERS
TO BE CONSTRUCTED IN**

**CLARK AVENUE
BETWEEN HEDDA ST. AND A POINT 1215 FT. NORTHERLY THEREOF**

PRIVATE CONTRACT NO. 2291

J.N. F146

W.S. 33

ONE SHEET

PC 2291
Page 1
J.N. F146
" 0935.22

17,854

PC 2291
J.N. F146

Encase 4' of Sewer at Points of Interference with poles - S-a-119.
Work shall be constructed according to specifications on file
in the office of the County Engineer and shall be prosecuted
only in the presence of the County Engineer.

No revision shall be made in these plans without approval of the County Engineer.
Before work can be started the Contractor must obtain a permit
to excavate on County Streets from the L.A. Co. Rd. Dept., 108 W. 2nd St.
Approval of this plan by the County of Los Angeles does not constitute
a representation as to the accuracy of the location of, or the existence
or non-existence of, any underground pipe, utility or structure within
the limits of this project.

AUGUST 1952
COUNTY OF LOS ANGELES, CALIFORNIA.

WILLIAM J. FOX COUNTY ENGINEER

SUBMITTED *A.P. Collins* SANITATION ENGINEER

APPROVED *A. M. Rawns* CHIEF DEPUTY

before breaking into any existing structure.

APPROVED *A. M. Rawns* CHIEF ENGINEER OF COUNTY

and before final acceptance of this work,

County Sanitation District should be notified

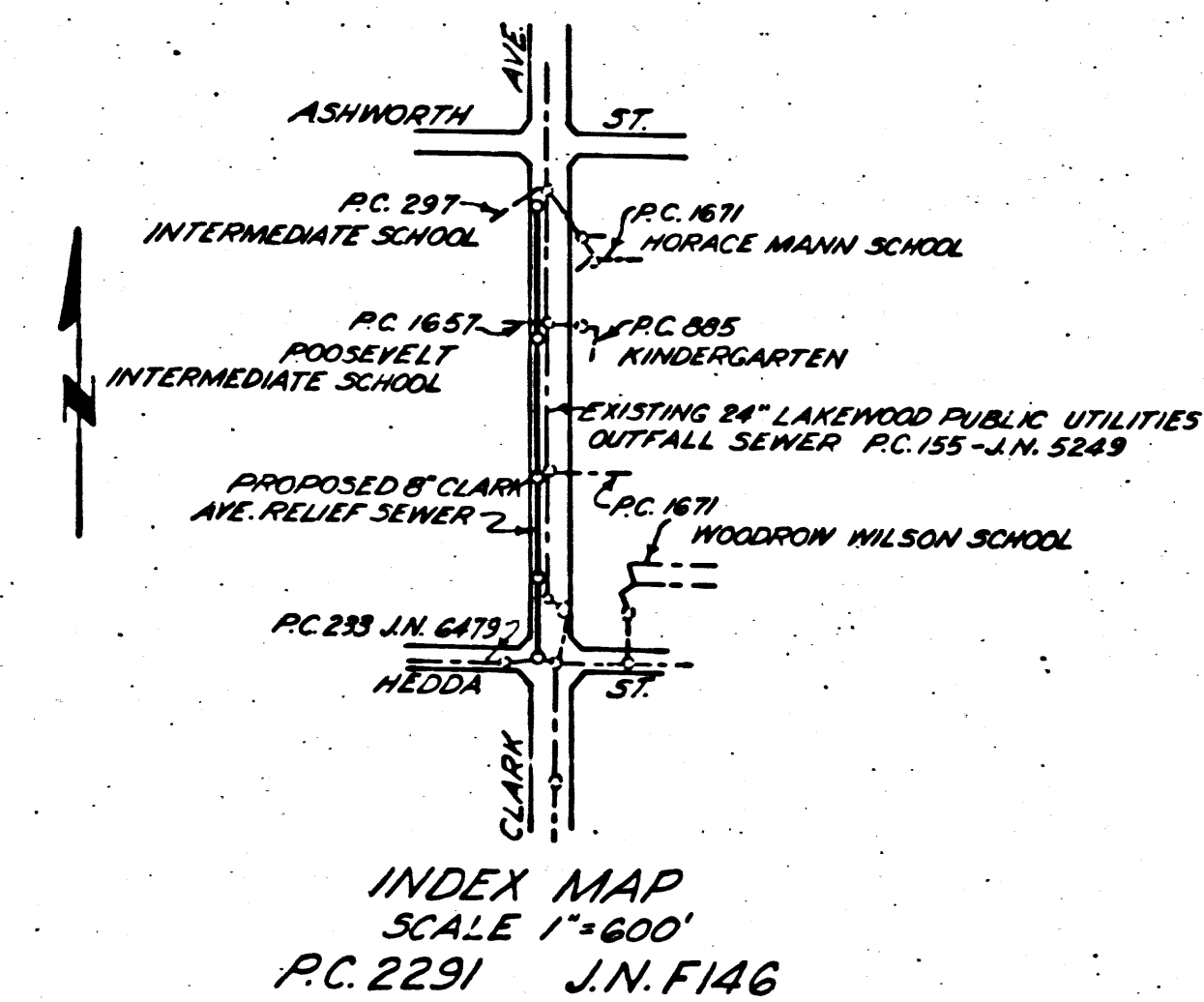
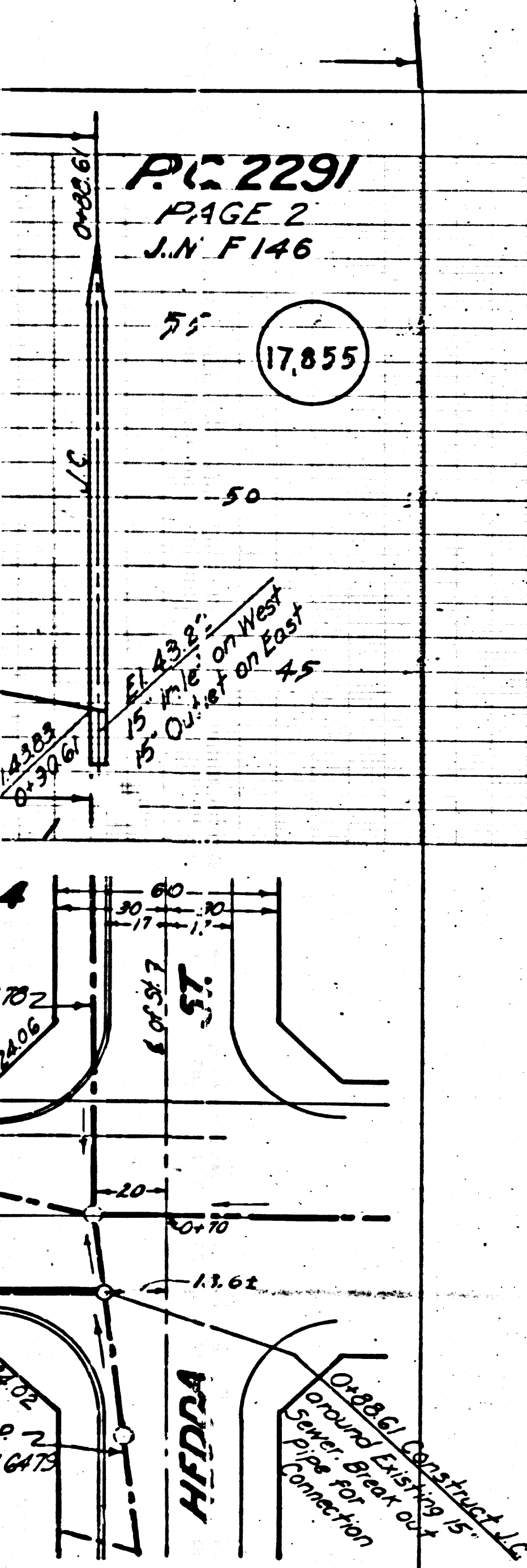
in order that required inspection may be made.

BY *A. M. Rawns* ASST. OFFICE ENGINEER

FOR LEGEND
SEE PLAN NO. S-a-94

NOTE: GRADES TO WHICH THIS IMPROVEMENT IS TO BE CONSTRUCTED ARE SHOWN ON PLANS AND PROFILES.
GRADE POINTS FOR TOP OF CURB, CENTER LINE OF STREET OR CENTER LINE OF ALLEY ARE SHOWN BY
CIRCLES ON PROFILES. AT ALL POINTS BETWEEN DESIGNATED POINTS THE GRADE SHALL BE ESTABLISHED
SO AS TO CONFORM TO A STRAIGHT LINE DRAWN BETWEEN SAID DESIGNATED POINTS.
ELEVATIONS ARE IN FEET ABOVE U. S. G. S. DATUM OR MEAN SEA LEVEL.
UNIT PRICES FOR ADDITIONAL WORK WHICH MAY BE REQUIRED BUT WHICH CANNOT BE ASCERTAINED
IN ADVANCE, SHALL BE SUBMITTED IN THE PROPOSAL.
THIS DRAWING AND THE DATA HEREON ARE HEREBY MADE A PART OF THE SPECIFICATIONS.

REFERENCES	DESIGNED	TRACED	CHECKED	DATE
W. S. 33	<i>RUTH</i>			AUG. 1952
A. B. 351-2		<i>RUTH</i>		AUG. 1952
F. B. 1246-201			<i>ZEMAN</i>	AUG. 1952



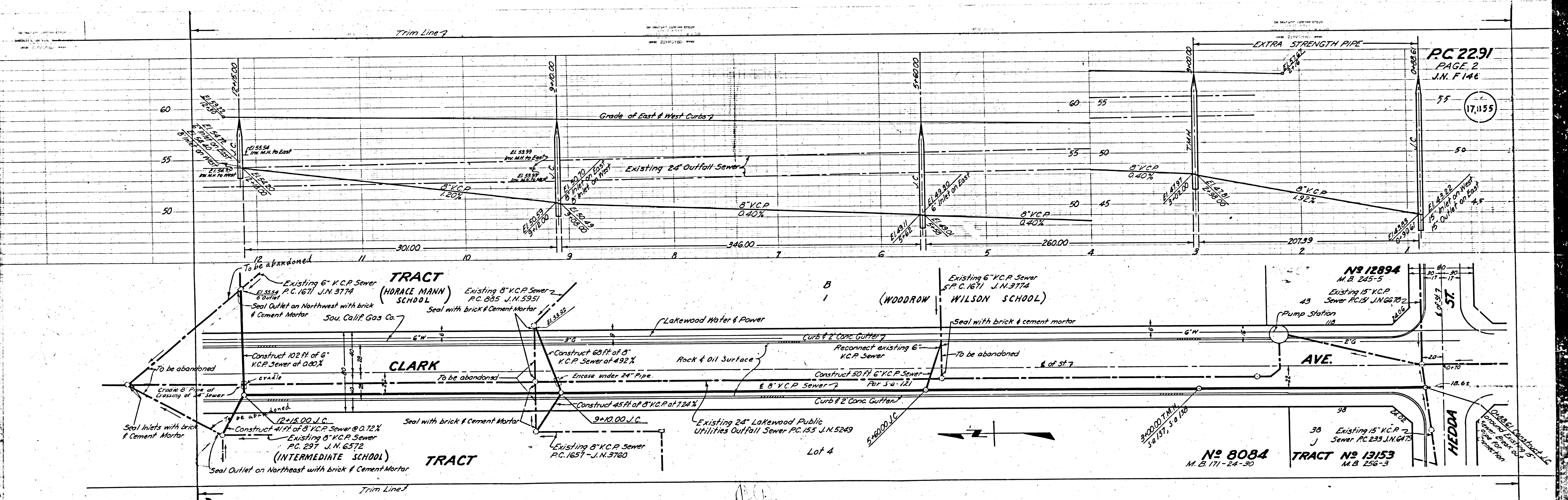
Checked 3-26-54 *McLaren*

Trim Line
214 check by 7/1/52

RECEIVED
AUG 19 1952

PC 2291
J.N. F146

87/61



PC 2291
PAGE 2
J.N. F 146
55
17,135

Nº 12894
M.B. 245-5
Existing 15" V.C.P. Sewer P.C. 121 J.N. 66702
43
Pump Station 118

Nº 8084
M.B. 171-24-30

TRACT Nº 13153
M.B. 256-3

TRACT (HORACE MANN) SCHOOL

TRACT (WOODROW) WILSON SCHOOL

TRACT (INTERMEDIATE SCHOOL)

Existing 24" Lakewood Public Utilities Outfall Sewer P.C. 155 J.N. 5249

