

17,378

LENNOX

PROFILE, ALIGNMENT AND GRADE OF
SANITARY SEWERS
TO BE CONSTRUCTED IN
BROADWAY
NORTH OF 127th STREET

PRIVATE CONTRACT NO. 2309
W-S-26
ONE SHEET

PREPARED IN THE OFFICES OF
RALPH B. MUNNELLEY
BY *Ralph B. Munnelley*
REG. C. E. NO. 2000

- (1) USE STANDARD MANHOLE FRAMES AND COVERS, 4'-11"
- (2) USE STANDARD 15" DRAIN PIPE
- (3) USE CEMENT MORTAR FOR ALL VITRIFIED CLAY PIPE JOINTS
- (4) RE-SURFACE ALL TRENCH WITHIN PAVED AREA TO MEET LOS ANGELES COUNTY ROAD DEPARTMENT REQUIREMENTS & 1" F.I.S.E. PER FOOT TO PROPERTY LINE
- (5) CONSTRUCT HOUSE CONNECTIONS WITH
- (6) ALL STRUCTURES SHALL BE BRICK SEWER STRUCTURES, 3'-0" DIA.
- (7) RISE 18" FROM FEET OF INVERT AT POINTS OF INTERFERENCE WITH PILES INTER-S-T-119
- (8) FOR CHANGE IN ELEVATION: 7'-0" - SEE SPEC. 6-2-2
- (9) INSTALL WORK AND TIES ON ALL CONNECTIONS 2" WYRE PER SPEC. 6-2-2

NOTE:
NO REPRESENTATIVE OF THE COUNTY ENGINEER WILL SURVEY OR LAY OUT ANY PORTION OF THE WORK.

THE OWNER OR HIS AUTHORIZED REPRESENTATIVE SHALL FURNISH THE COUNTY ENGINEER WITH ALL NECESSARY STATIONS OF ALL EXISTING CONDUITS, PIPES, CULVERTS, ETC., AND SHALL BE RESPONSIBLE FOR THE LOCATION AND DEPTH OF ALL EXISTING UTILITIES. ANY CHANGE OF LOCATION SHALL BE REQUESTED IN WRITING BY THE OWNER OR HIS REPRESENTATIVE.

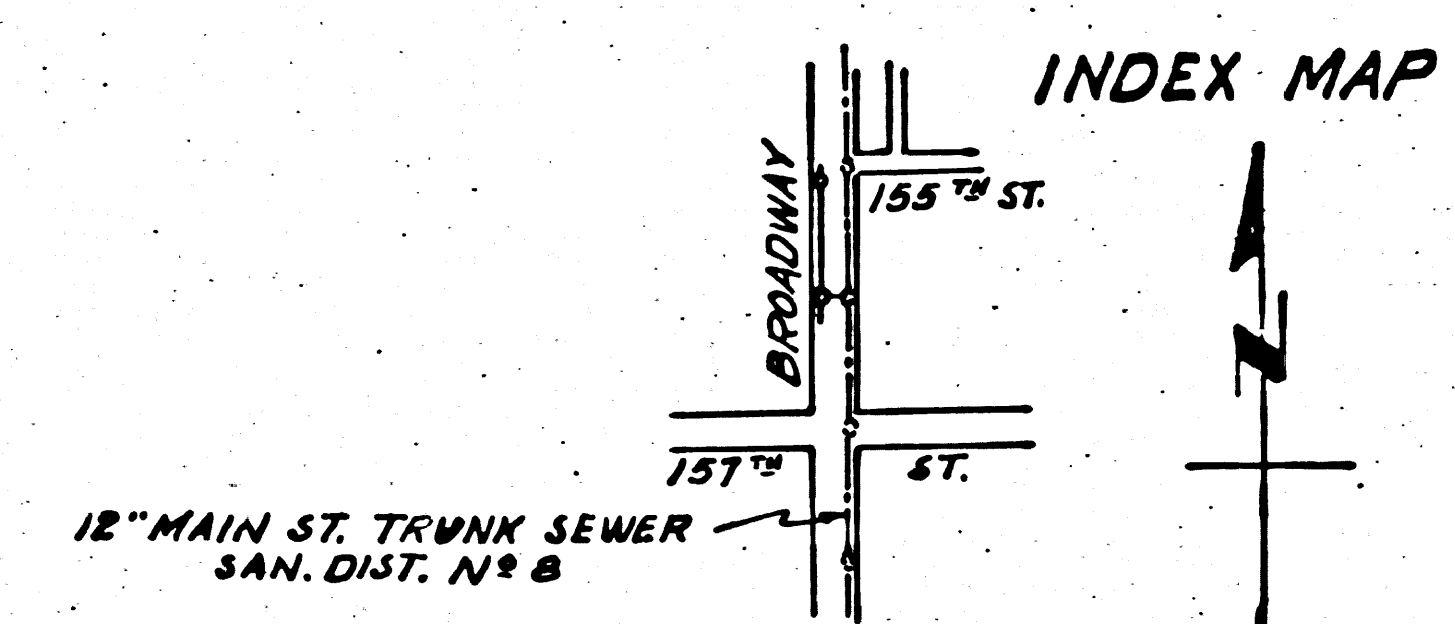
NO REVISIONS SHALL BE MADE IN THESE PLANS WITHOUT APPROVAL OF THE COUNTY ENGINEER.

STOPPERS TO BE INSTALLED WITH JOINT COMPOUND BY MANUFACTURER AT HIS PLANT.

SPEC. 3-1-2-2

CONCRETE PAVEMENT TO BE SET NOT LESS THAN 2" IN DEPTH WITH CONCRETE SAW-SPEC. 5-2-2. WHERE GROUND WATER IS ENCOUNTERED, WATSON'S GASKETS & FORMS SHALL BE USED. PER 5-2-27, IN MAIN LINE AND HOUSE CONNECTIONS.

FOR LEGEND
See Plan No. 6-2-64



PC. 2309 J.N. F168
Scale 1" = 600'

Before breaking into any existing structure and before final acceptance of this work, County Sanitation District should be notified. In order that required inspection may be made.

NOTE:
ELEVATIONS ARE IN FEET ABOVE U.S.G.S. DATUM OR MEAN SEA LEVEL. THIS DRAWING AND THE DATA HEREON ARE HEREBY MADE A PART OF THE SPECIFICATIONS. WORK SHALL BE CONSTRUCTED ACCORDING TO SPECIFICATION ON FILE IN THE OFFICE OF THE COUNTY ENGINEER AND SHALL BE PROTECTED ONLY IN THE PRESENCE OF THE COUNTY ENGINEER. BEFORE WORK CAN BE STARTED THE CONTRACTOR MUST OBTAIN A PERMIT TO EXCAVATE IN COUNTY STREETS FROM LOS ANGELES COUNTY ROAD DEPARTMENT, 100 WEST 8th ST. AND MAKE A DEPOSIT WITH THE COUNTY ENGINEER, 125 COUNTY ENGINEERING BUILDING, SUFFICIENT TO COVER COST OF CONSTRUCTION INSPECTION AND RECORD PLANS.

IF WORK IS TO BE DONE IN A STATE HIGHWAY, A PERMIT MUST BE OBTAINED FROM THE STATE OF CALIFORNIA, DIVISION OF HIGHWAYS, 120 SOUTH SPRING ST. AFTER MAKING THE DEPOSIT WITH THE COUNTY ENGINEER.

APPROVAL OF THIS PLAN BY THE COUNTY OF LOS ANGELES DOES NOT CONSTITUTE A REPRESENTATION AS TO THE ACCURACY OF THE LOCATION OF, OR THE EXISTENCE OR NON-EXISTENCE OF ANY UNDERGROUND UTILITY PIPE OR STRUCTURE WITHIN THE LIMITS OF THIS PROJECT.

COUNTY OF LOS ANGELES, CALIFORNIA

APPROVED *William J. Fox* COUNTY ENGINEER
BY *F. W. Pate* ASST. CHIEF/DEPUTY

APPROVED *A. M. Rawlin* CHIEF ENGINEER OF COUNTY SANITATION DISTRICT NO. 8
BY *H. B. ...* OFFICE ENGINEER

CHECKED BY *Richard E. ...* 9-17-51
OFFICE OF COUNTY ENGINEER R.E. 10780

BC S 3009

W. J. F. 168

PC 2309

SEP 4 1952