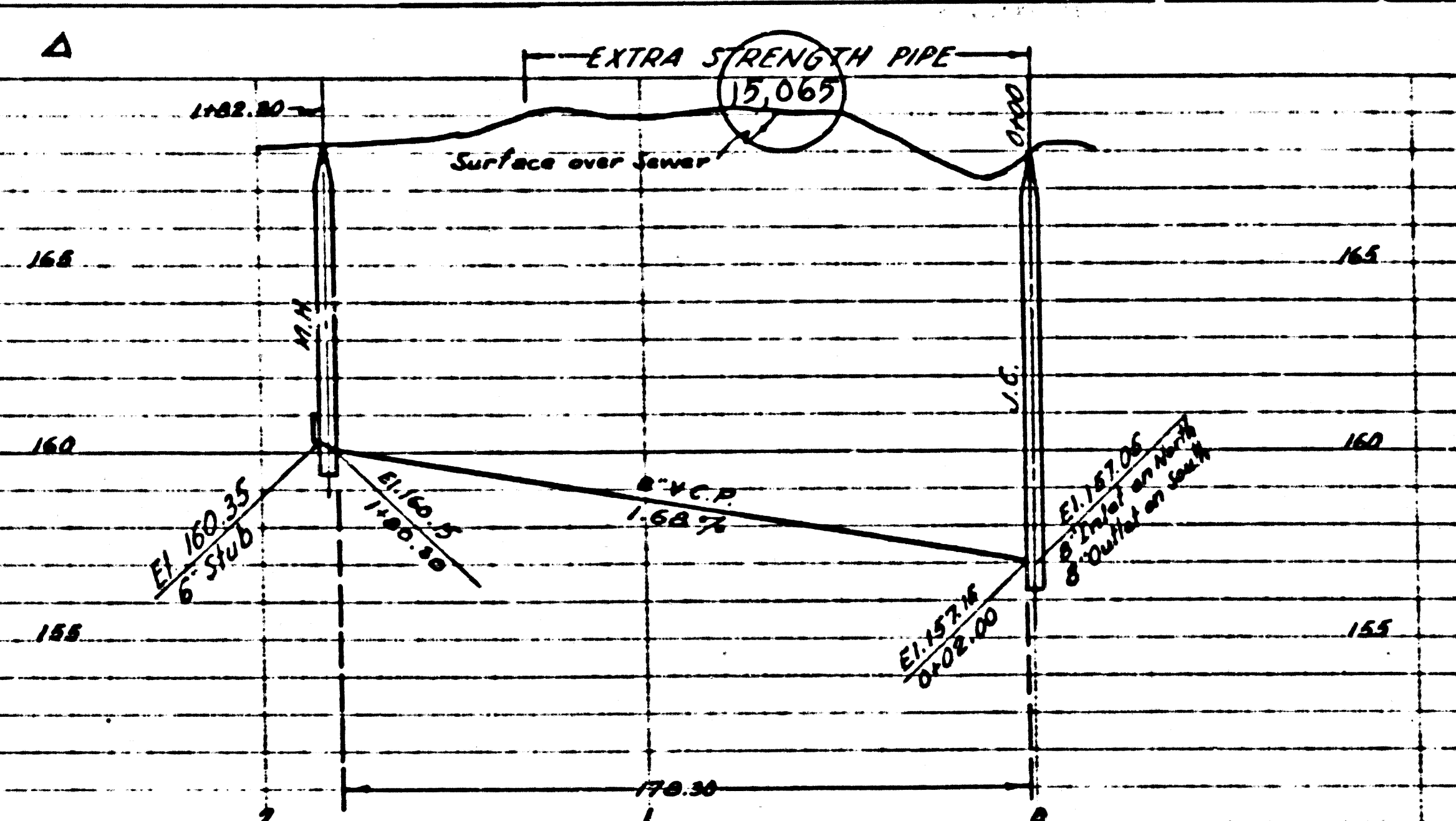
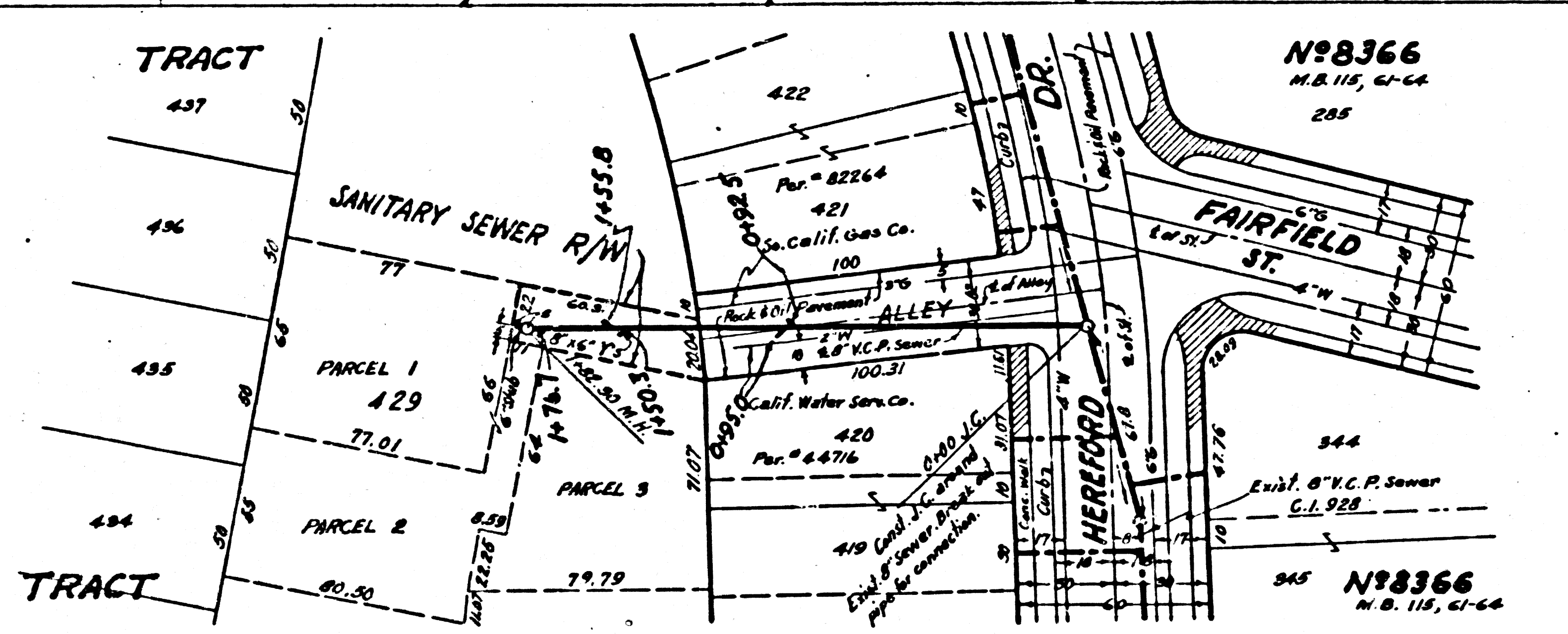


P.C. 4313



P.C. 2313 J.N. F172
PAGE 2

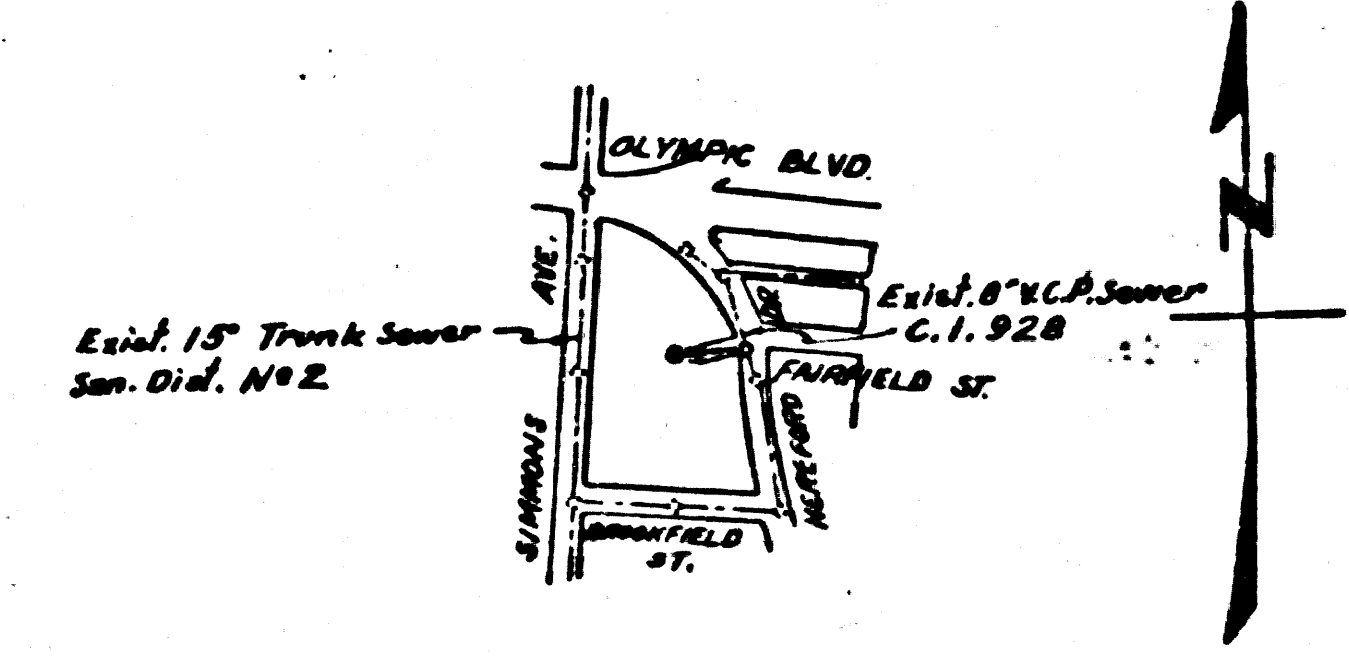


20

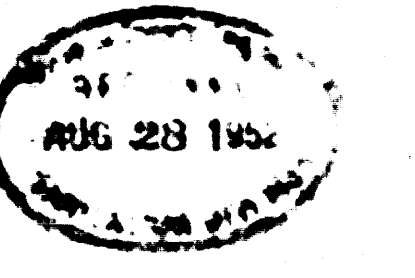
BM - 169 - E1168.63 - L.B. 556-118
 Harvard Dr. & Fairfax St. Bl. Spr. 6' E.
 of E. and C.R. - H.E. Co.

- NOTE:**
 NO REPRESENTATIVE OF THE COUNTY ENGINEER WILL SURVEY OR LAY OUT ANY PORTION OF THE WORK.
 THE OWNER OR HIS AUTHORIZED REPRESENTATIVE SHALL FURNISH THE COUNTY ENGINEER WITH GRADE SHEETS AND STATIONS FOR ALL HOUSE CONNECTIONS AND Y BRANCHES AND SHALL PROVIDE STAKES FOR THEM AT THEIR PROPER LOCATIONS WITH STATIONING PLAINLY MARKED. ANY CHANGE IN LOCATION SHALL BE REQUESTED IN WRITING BY THE OWNER OR HIS REPRESENTATIVE.
 NO REVISIONS SHALL BE MADE IN THESE PLANS WITHOUT APPROVAL OF THE COUNTY ENGINEER.
1. USE STANDARD MANHOLE FRAMES AND COVERS, 5'-0" DIA.
 2. USE STANDARD STRENGTH PIPE EXCEPT AS NOTED.
 3. USE CEMENT MORTAR FOR ALL VITRIFIED CLAY PIPE JOINTS.
 4. RESURFACE ALL TRENCH WITHIN PAVED AREA TO MEET L.A. COUNTY ROAD DEPT. REQUIREMENTS.
 5. ENCASE FOUR FEET OF SEWER AT POINTS OF INTERFERENCE WITH POLES, 5'-0" DIA. HOUSE CONNECTIONS TO BE CONSTRUCTED WITH INVERTS AT PROPERTY LINE FEET BELOW CURB BODE.
 6. ALL STRUCTURES SHALL BE BRICK SEWER STRUCTURES, 5'-0" DIA.
 7. PROVIDE STAKES ON THE PROPERTY LINES OF PROPERTY LINES PRODUCED AT RIGHT ANGLES TO THE SEWER LINE AT THE CENTER LINE OF EACH MANHOLE.
 8. STOPPERS TO BE INSTALLED WITH JOINT COMPOUND BY MANUFACTURER AT HIS PLANT. SPEC'S. SEC. 88.48.
 9. CONCRETE PAVEMENT TO BE CUT NOT LESS THAN 2" IN DEPTH WITH CONCRETE S.W. SPEC'S. SEC. 65.
 10. INSTALL WIRE AND TIES. SPEC'S. SEC. 48.
 11. WHEREVER GROUND WATER IS ENCOUNTERED INSTALL WESTON GASKETS AND FORMS.
 12. FOR CHANGE IN LEAKAGE TEST SEE SEC. 49 OF SPECIFICATIONS.
 13. CONSTRUCT TOPS OF ALL STRUCTURES IN RIGHTS OF WAY 6" ABOVE FINISHED GRADE.

INDEX MAP



P.C. 2313 J.N. F172
 Scale 1" = 600'



15,064
**PROFILE, ALIGNMENT, AND GRADE OF
 SANITARY SEWERS
 TO BE CONSTRUCTED IN
 ALLEY AND SEWER EASEMENT
 FROM HEREFORD DRIVE WLY 182 FT.
 IN TRACT NO. 8366**

PAGE 1

**PRIVATE CONTRACT NO. 2313
 W.S. 36
 SHEET 1 OF 1 SHEETS**
 SCALE: VERT. 1" = 4'
 HORIZ. 1" = 40' AUG. 1952
 PREPARED IN THE OFFICES OF
 OLSON SURVEYING SERVICE
 BY *Paul H. Olson* REGISTERED 7610
 FOR LEGEND SEE PLAN NO. 5-0-64

NOTE:
 GRADES TO WHICH THIS IMPROVEMENT IS TO BE CONSTRUCTED ARE SHOWN ON PLANS AND PROFILES. GRADE POINTS FOR TOP OF CURB, CENTER LINE OF STREETS, OR CENTER LINE OF ALLEY ARE SHOWN BY CIRCLES ON PROFILES. AT ALL POINTS BETWEEN DESIGNATED POINTS THE GRADE SHALL BE ESTABLISHED SO AS TO CONFORM TO A STRAIGHT LINE DRAWN BETWEEN SAID DESIGNATED POINTS. ELEVATIONS ARE IN FEET ABOVE U.S.C. DATUM OR MEAN SEA LEVEL.
 THIS DRAWING AND THE DATA HEREON ARE HEREBY MADE A PART OF THE SPECIFICATIONS. WORK SHALL BE CONSTRUCTED ACCORDING TO SPECIFICATIONS ON FILE IN THE OFFICE OF THE COUNTY ENGINEER AND SHALL BE PROSECUTED ONLY IN THE PRESENCE OF THE COUNTY ENGINEER. BEFORE WORK CAN BE STARTED, THE CONTRACTOR MUST OBTAIN A PERMIT TO LOCATE IN COUNTY STREETS FROM THE L.A. COUNTY ROAD DEPT., 100 W. 5th ST. AND MAKE A DEPOSIT WITH THE COUNTY ENGINEER, 728 L.A. COUNTY ENGINEERING BUILDING, SUFFICIENT TO COVER THE COST OF CONSTRUCTION INSPECTION AND RECORD PLANS.
 APPROVAL OF THIS PLAN BY THE COUNTY OF LOS ANGELES DOES NOT CONSTITUTE A REPRESENTATION AS TO THE ACCURACY OF THE LOCATION OF, OR THE EXISTENCE OR NON-EXISTENCE OF ANY UNDERGROUND UTILITY, PIPE, OR STRUCTURE WITHIN THE LIMITS OF THIS PROJECT. THIS NOTE APPLIES TO ALL SHEETS.

COUNTY OF LOS ANGELES, CALIFORNIA
 APPROVED, WILLIAM J. FOX, COUNTY ENGINEER
 BY *William J. Fox*
 CHIEF DEPUTY
 APPROVED, A.M. RAWN, CHIEF ENGR. 20, SAN. DIST. NO. 2
 BY *A.M. Rawn*
 OFFICE ENGINEER
 CHECKED BY: *Robert E. Keating* 8-12-52
 OFFICE OF COUNTY ENGINEER, REG. C.E. NO. 1289

checked 9-16-52 W. J. Fox

W. J. FOX, 110 938 E.
 1100 HEREFORD DRIVE, WLY 182 FT.
 ALLEY & SEWER EASEMENT

P.C. 2313

J.W. LUS

PC 2313