

FLORENCE

Trim Line 1

SY D.M. 1079 Elev. 102.327  
L & T 10 Edge of Pavement  
14' 6" E. Central Ave & 65' South  
of E. Rosecrans

- NOTE:  
NO REPRESENTATIVE OF THE COUNTY ENGINEER WILL SURVEY OR LAY OUT ANY PORTION OF THE WORK.  
THE OWNER OR HIS AUTHORIZED REPRESENTATIVE SHALL FURNISH THE COUNTY ENGINEER WITH GRADE SHEETS AND STATIONS FOR ALL HOUSE CONNECTIONS AND Y-BRANCHES AND SHALL PROVIDE STAKES FOR THEM AT THEIR PROPER LOCATIONS WITH STATIONING FAIRLY MARKED. ANY CHANGE OF LOCATION SHALL BE REQUESTED IN WRITING BY THE OWNER OR HIS REPRESENTATIVE.  
NO REVISIONS SHALL BE MADE IN THESE PLANS WITHOUT APPROV. OF THE COUNTY ENGINEER.
1. USE STANDARD MANHOLE FRAMES AND COVERS S-4-112.
  2. USE STANDARD STRENGTH PIPE EXCEPT AS NOTED.
  3. USE CEMENT MORTAR FOR ALL VITRIFIED CLAY PIPE JOINTS.
  4. RESURFACE ALL TRENCH WITHIN PAVED AREA TO MEET L.A. COUNTY ROAD DEPT. REQUIREMENTS & CITY OF COMPTON.
  5. INCASE FOUR FEET OF SEWER AT POINTS OF INTERFERENCE WITH POLES, S-4-112.
  6. HOUSE CONNECTIONS TO BE CONSTRUCTED WITH INVERT AT PROPERTY LINE 3 FEET BELOW CURB GRADE, EXCEPT AS NOTED.
  7. ALL STRUCTURES SHALL BE BRICK SEWER STRUCTURES, S-4-104.
  8. PROVIDE STAKES ON THE PROPERTY LINES OR PROPERTY LINES PRODUCED, AT RIGHT ANGLES TO THE SEWER LINE AT THE CENTER LINE OF EACH MANHOLE.
  9. STOPPERS TO BE INSTALLED WITH JOINT COMPOUND BY MANUFACTURER AT HIS PLANT. SPECS. SEC. 33, 46.
  10. CONCRETE PAVEMENT TO BE CUT NOT LESS THAN 2" IN DEPTH WITH CONCRETE SAW. SPECS. SEC. 46.
  11. INSTALL WIRE & TAGS PER SPECS. SEC. 48.

PROFILE, ALIGNMENT AND GRADE OF  
**SANITARY SEWERS**  
TO BE CONSTRUCTED IN  
**TRACT NO 18359**

P.C. 2347  
J.N.F. 206  
PAGE 1

SHEET 1  
OF 3 SHEETS

(17,857)

PRIVATE CONTRACT NO. 2347  
W.S.26  
SHEET 1 OF 3 SHEETS  
AUGUST 1952  
PREPARED IN THE OFFICES OF  
ENGINEERING SERVICE CORPORATION

BY: *P. H. Gregory*  
446 C.E. NO. 102

FOR LEGEND  
SEE PLAN NO. S-4-44

NOTE:  
GRADES TO WHICH THIS IMPROVEMENT IS TO BE CONSTRUCTED ARE SHOWN ON PLANS AND PROFILES. GRADE POINTS FOR TOP OF CURB, CENTER LINE OF STREETS, OR CENTER LINE OF ALLEY ARE SHOWN BY CIRCLES OF PROFILES. AT ALL POINTS BETWEEN DESIGNATED POINTS THE GRADE SHALL BE ESTABLISHED SO AS TO CONFORM TO A STRAIGHT LINE DRAWN BETWEEN SAID DESIGNATED POINTS.  
ELEVATIONS ARE IN FEET ABOVE U. S. G. S. DATUM OR MEAN SEA LEVEL.  
THIS DRAWING AND THE DATA HEREON ARE HEREBY MADE A PART OF THE SPECIFICATIONS.  
WORK SHALL BE CONSTRUCTED ACCORDING TO SPECIFICATIONS ON FILE IN THE OFFICE OF THE COUNTY ENGINEER AND SHALL BE PROVIDED ONLY IN THE PRESENCE OF THE COUNTY ENGINEER.  
BEFORE WORK CAN BE STARTED THE CONTRACTOR MUST OBTAIN A PERMIT TO EXCAVATE IN COUNTY STREETS FROM THE L.A. COUNTY ROAD DEPT. 108 W. 2ND ST. AND MAKE A DEPOSIT WITH THE COUNTY ENGINEER, 733 COUNTY ENGINEERING BUILDING SUFFICIENT TO COVER THE COST OF CONSTRUCTION INSPECTION AND RECORD PLANS.  
APPROVAL OF THIS PLAN BY THE COUNTY OF LOS ANGELES DOES NOT CONSTITUTE A REPRESENTATION AS TO THE ACCURACY OF THE LOCATION OF, OR THE EXISTENCE OR NON-EXISTENCE OF, ANY UNDERGROUND UTILITY, PIPE, OR STRUCTURE WITHIN THE LIMITS OF THIS PROJECT. THIS NOTE APPLIES TO ALL SHEETS.  
COUNTY OF LOS ANGELES, CALIFORNIA

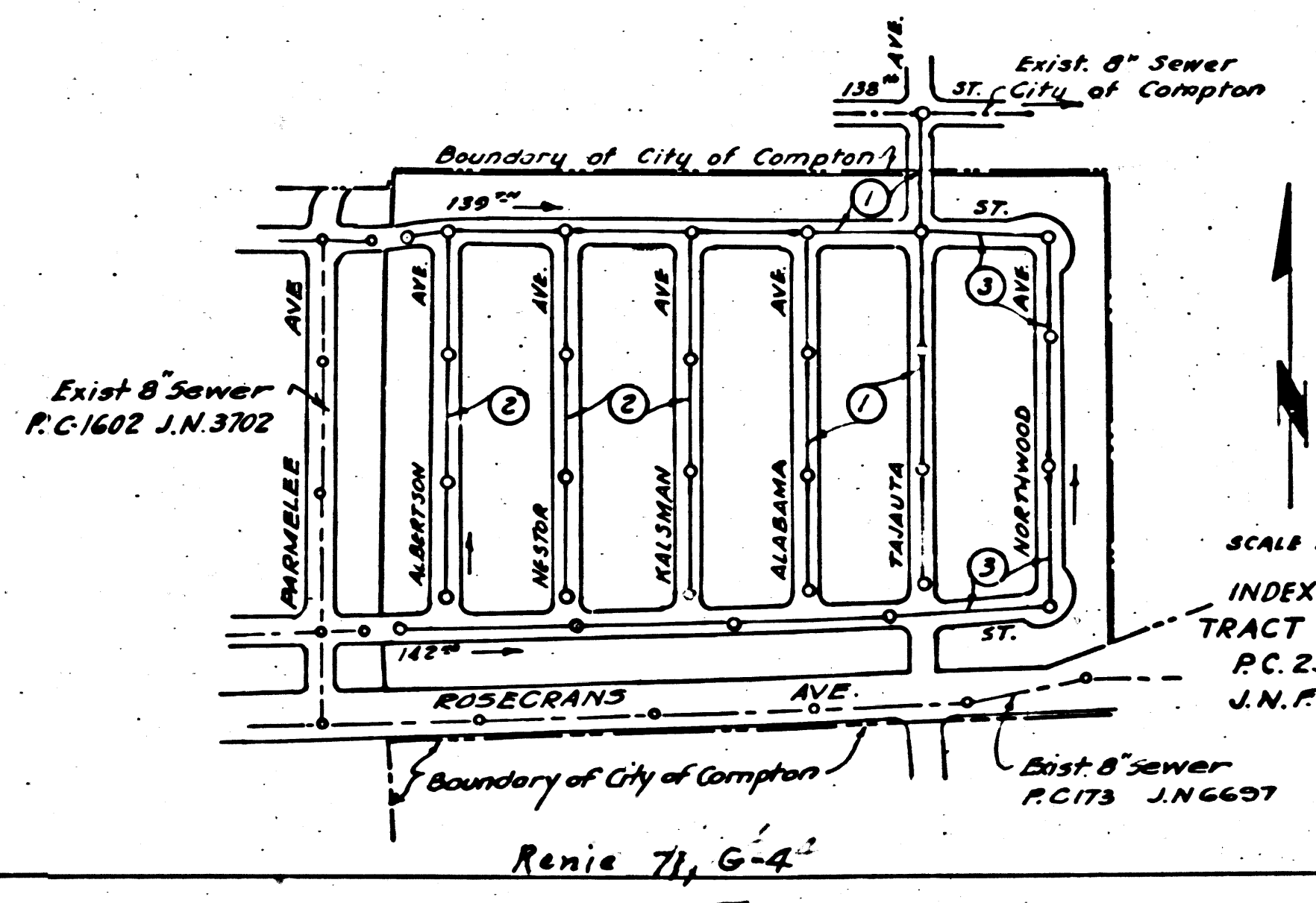
WILLIAM J. FOX  
COUNTY ENGINEER  
APPROVED BY: *A. H. Gregory*  
CHIEF DIVISION ENGINEER

A. M. RAWN  
CHIEF ENGINEER OF COUNTY  
SANITATION DISTRICT NO. 1  
APPROVED BY: *[Signature]*  
CHIEF ENGINEER

CHECKED BY: *R. E. Kelly*  
OFFICE OF COUNTY ENGINEER  
10-3-52  
Rev. 10-1-52

CITY OF COMPTON  
APPROVED BY: *[Signature]*  
CITY ENGINEER

checked 2-19-53 *[Signature]*



SHEET NO.	PAGES
1	1-6
2	5-7
3	8-10

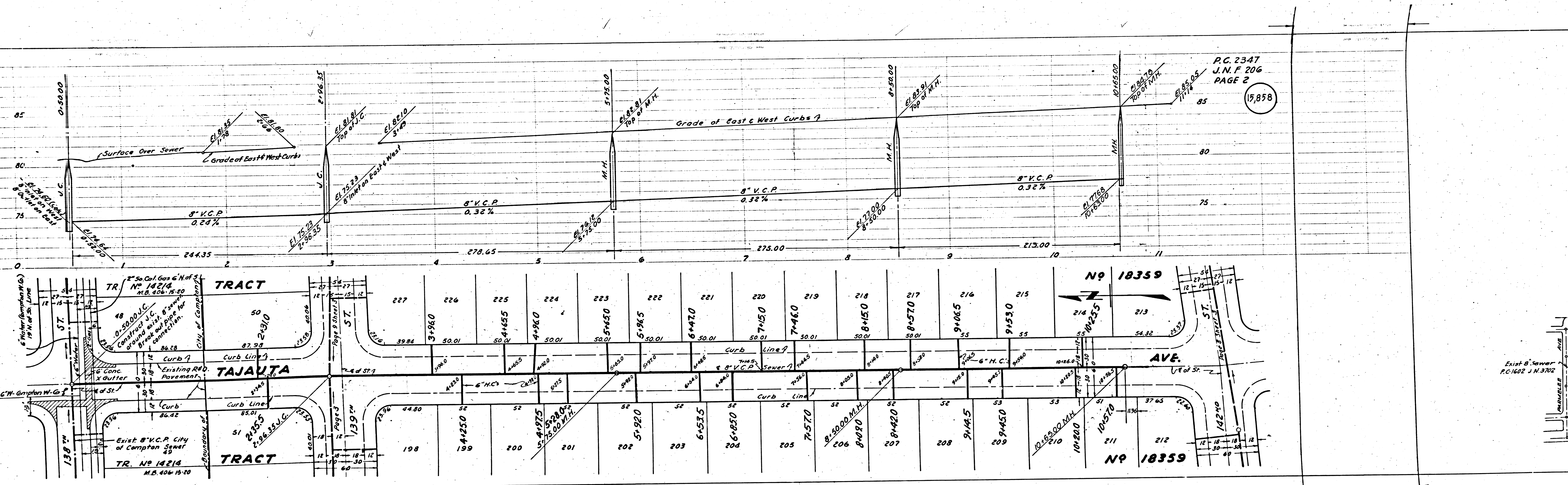
ENGINEERING SERVICE CORPORATION			
1127 W WASHINGTON BLVD.			
LOS ANGELES 15 CALIF PR. 7281			
REVISIONS			
Revised Terminal Manholes	11-24-52	TRACED BY	ES
		DESIG'D BY	ES
		CK'D BY	MS
		SUBMITTED	MS
SUB STRUCTURES CK'D			
W. O. NO.	DWS NO.	DATE	SCALE
5920-32		AUG. 1952	PLAN 1"=40'

1  
J. N. F. 206  
2 W. SEWERS

RECEIVED  
AT  
108 W. 2ND ST.  
LOS ANGELES, CALIF.

1  
J. N. F. 206  
P.C. 2347

Trim Line 1

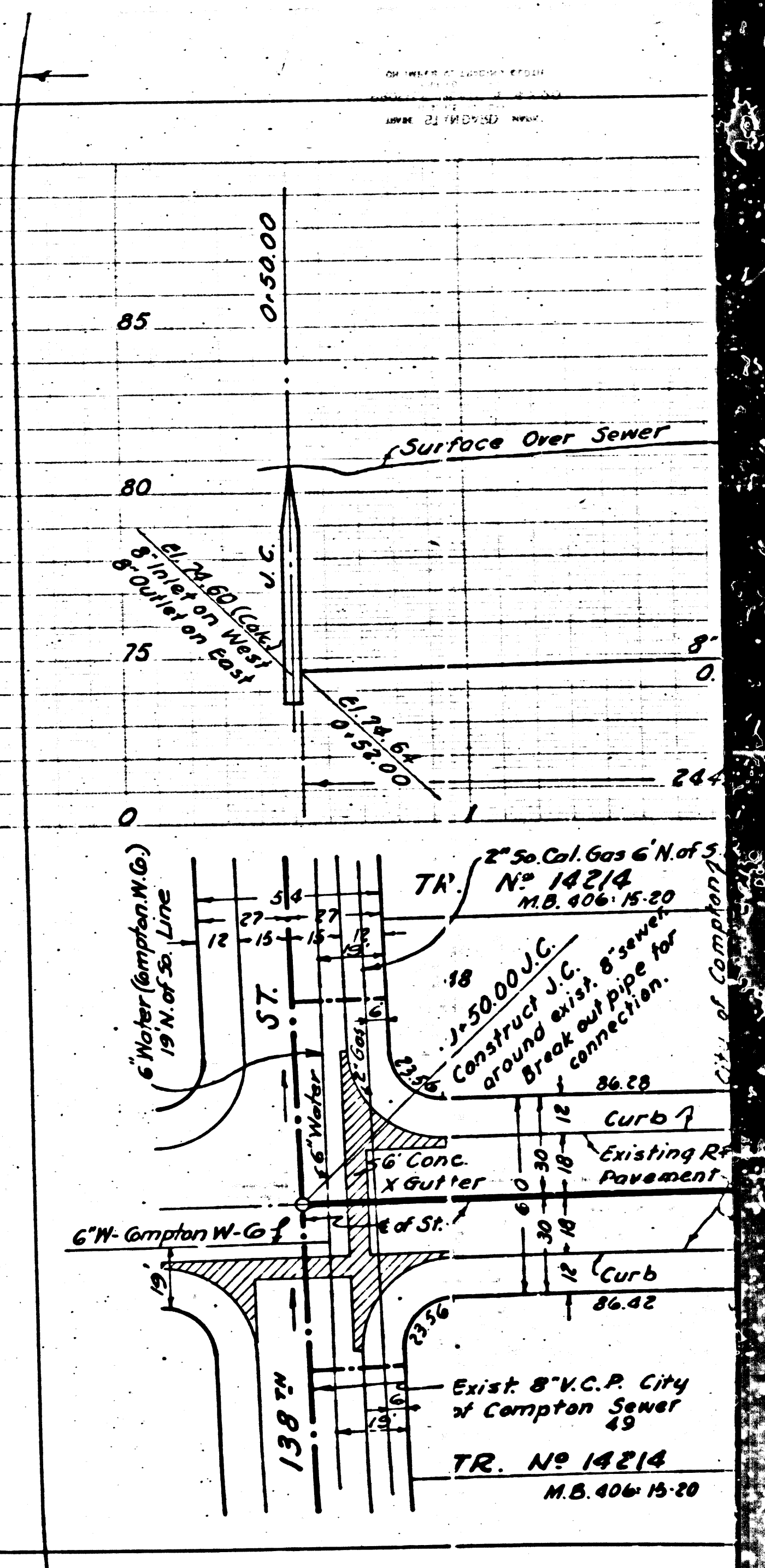
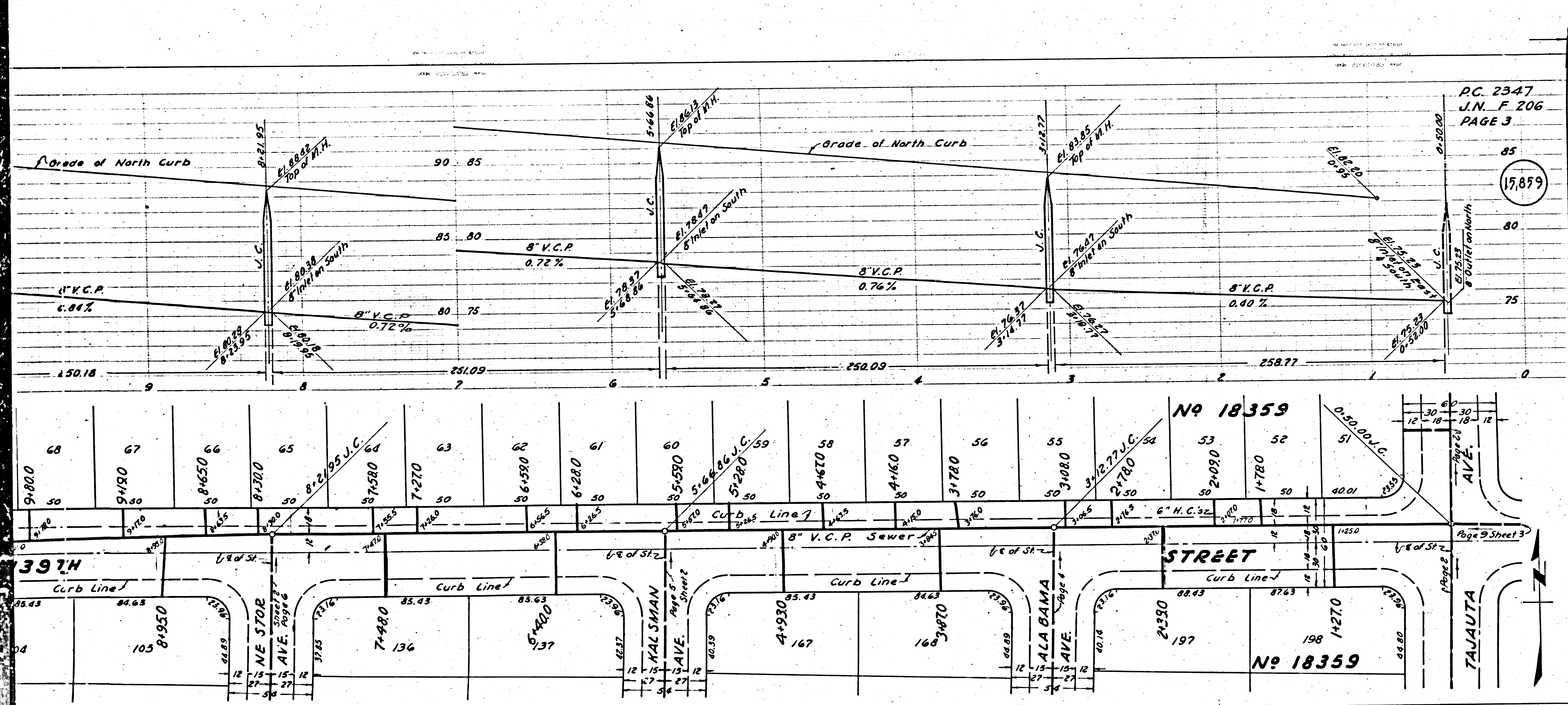


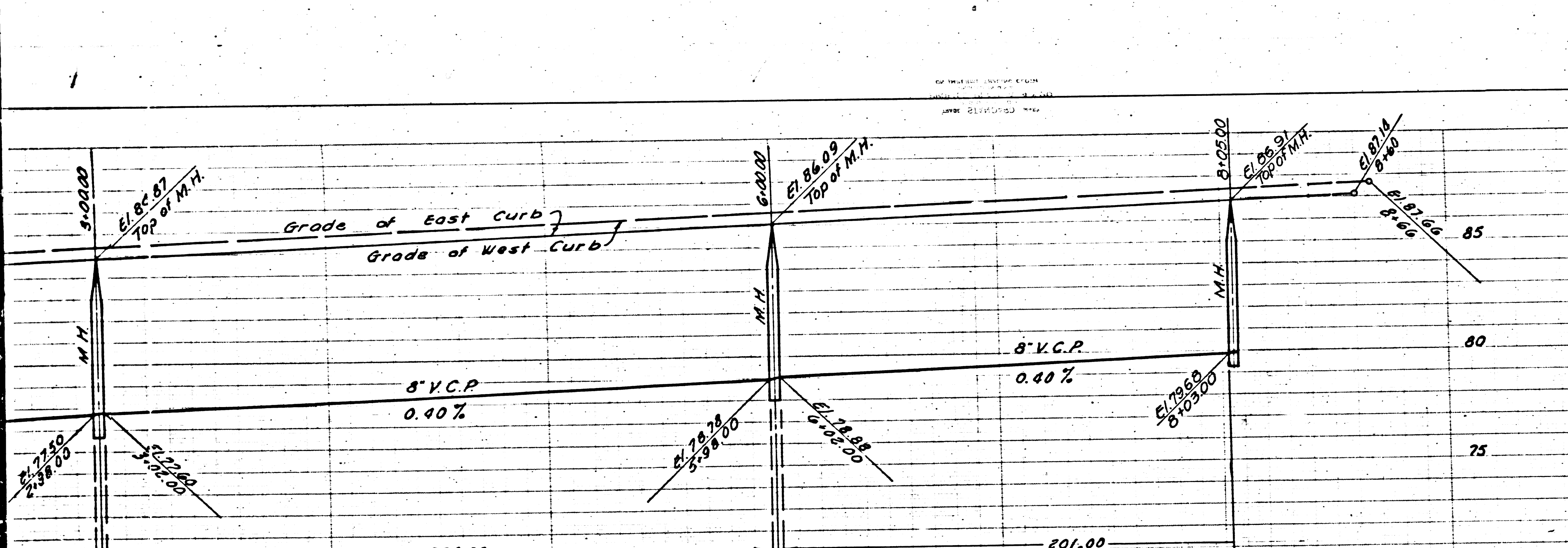
P.C. 2347  
J.N.F. 206  
PAGE 2

15,858

S.Y. B.M.  
147 M.E.  
M.B. & C.  
OF E. 202

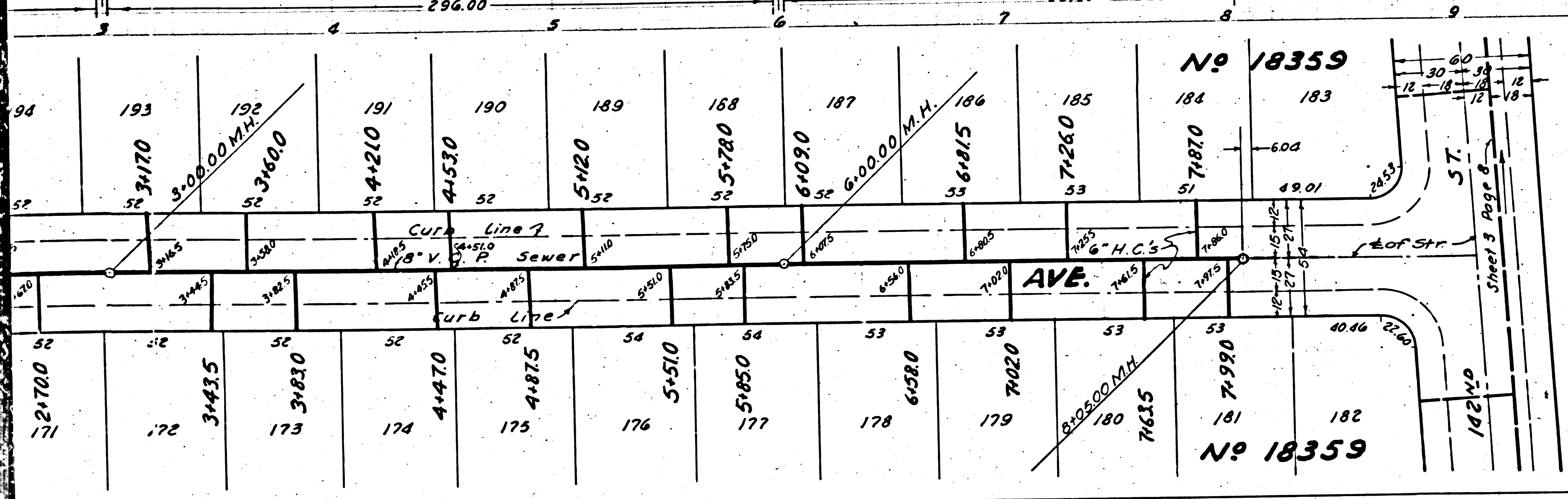
Exist. 8" Sewer  
P.C. 1602 J.N. 3702



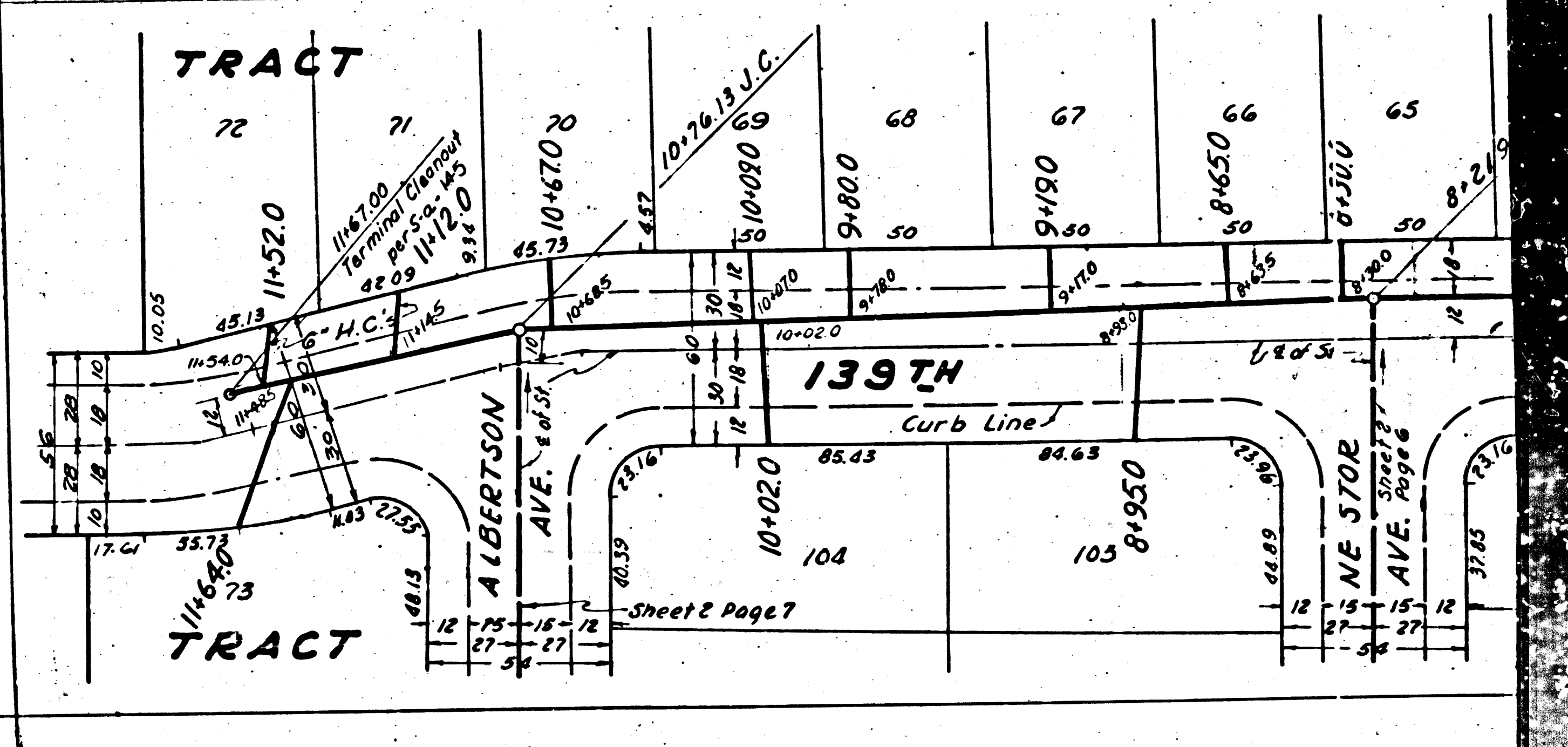
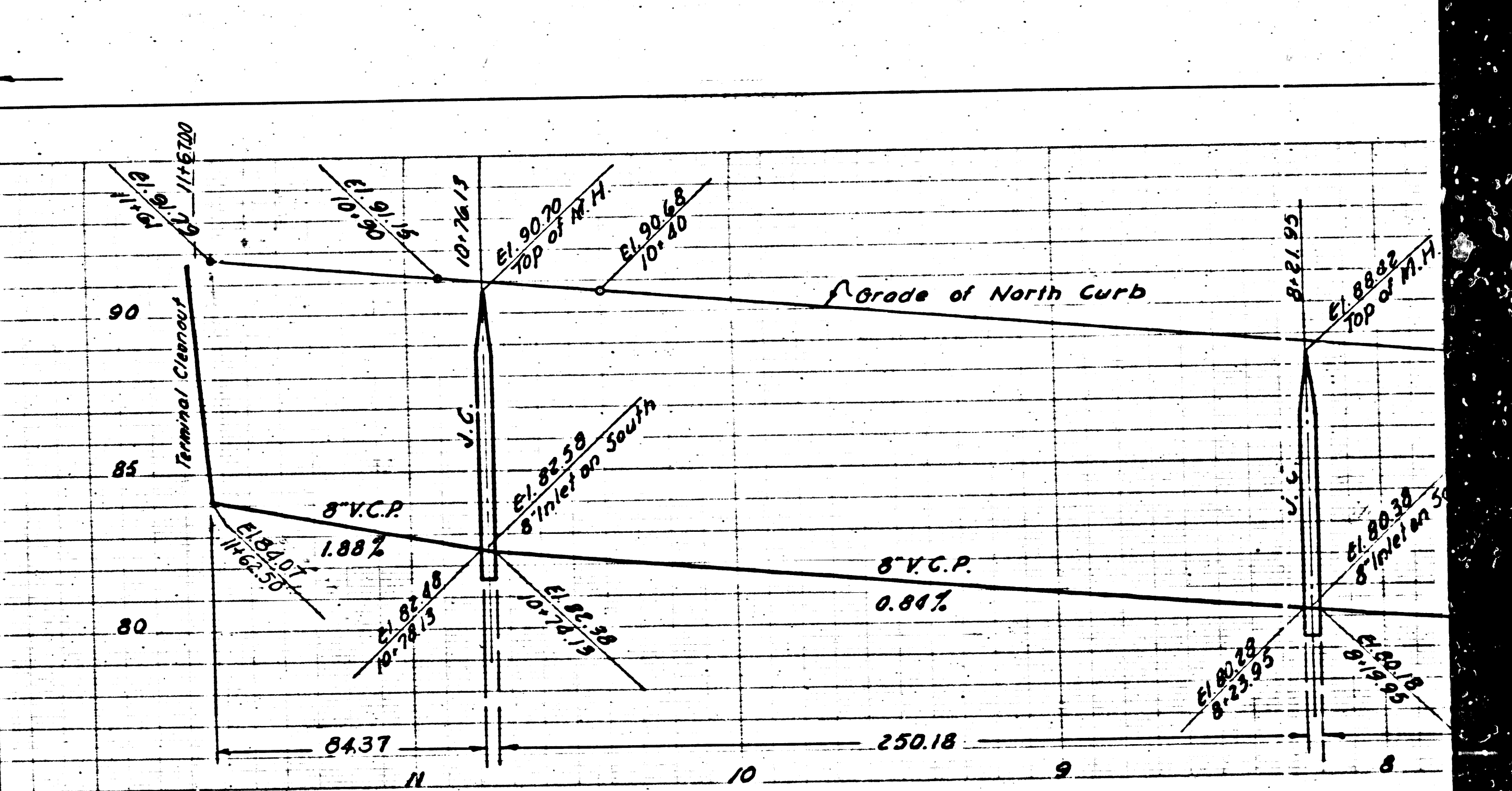


P.C. 2347  
 J.N. F 206  
 PAGE 4

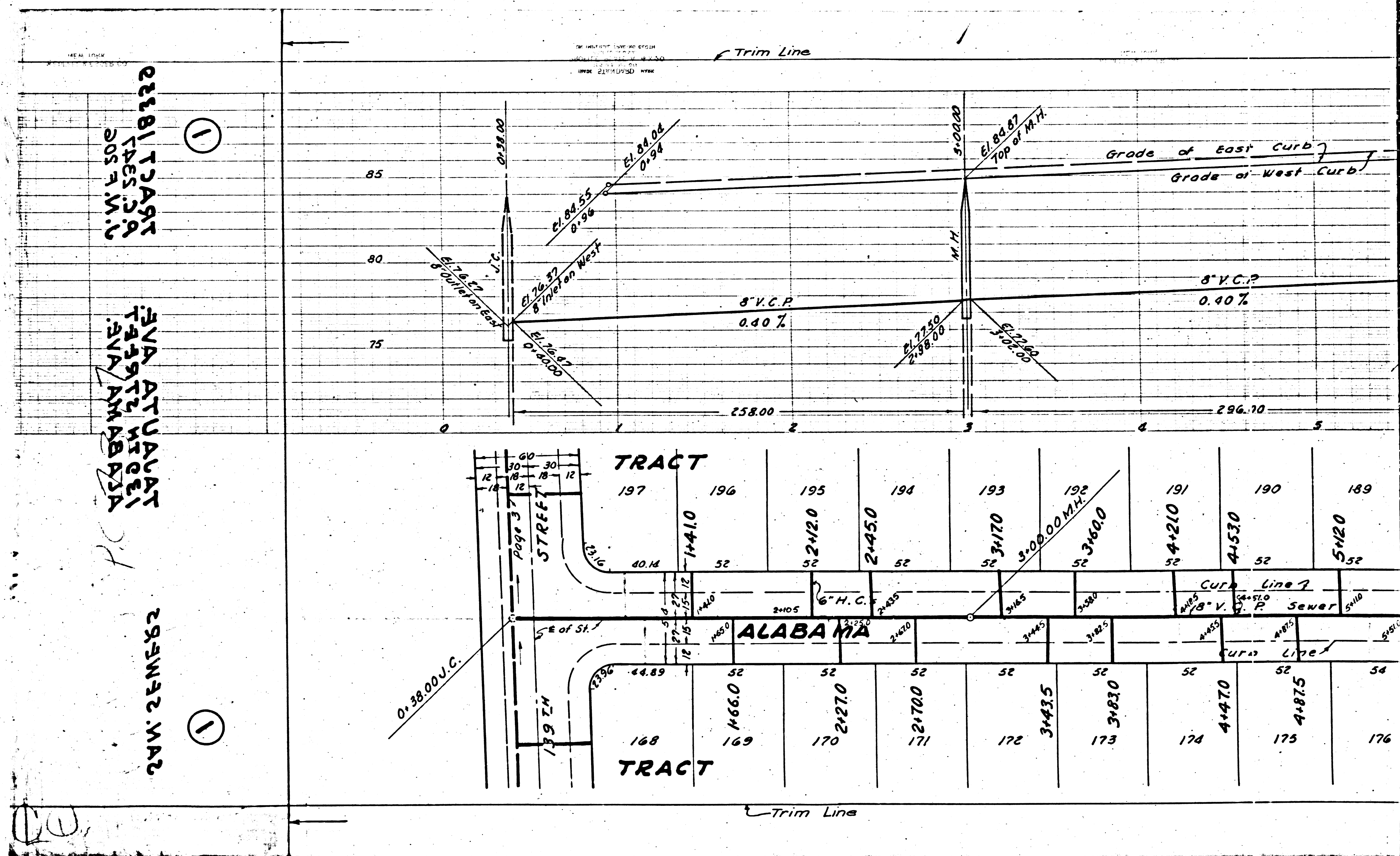
(17,860)



Sheet 3 Page 6  
 Street 3



Sheet 2 Page 7



22181 T3AST  
 T4522 A  
 205 F.M.V.

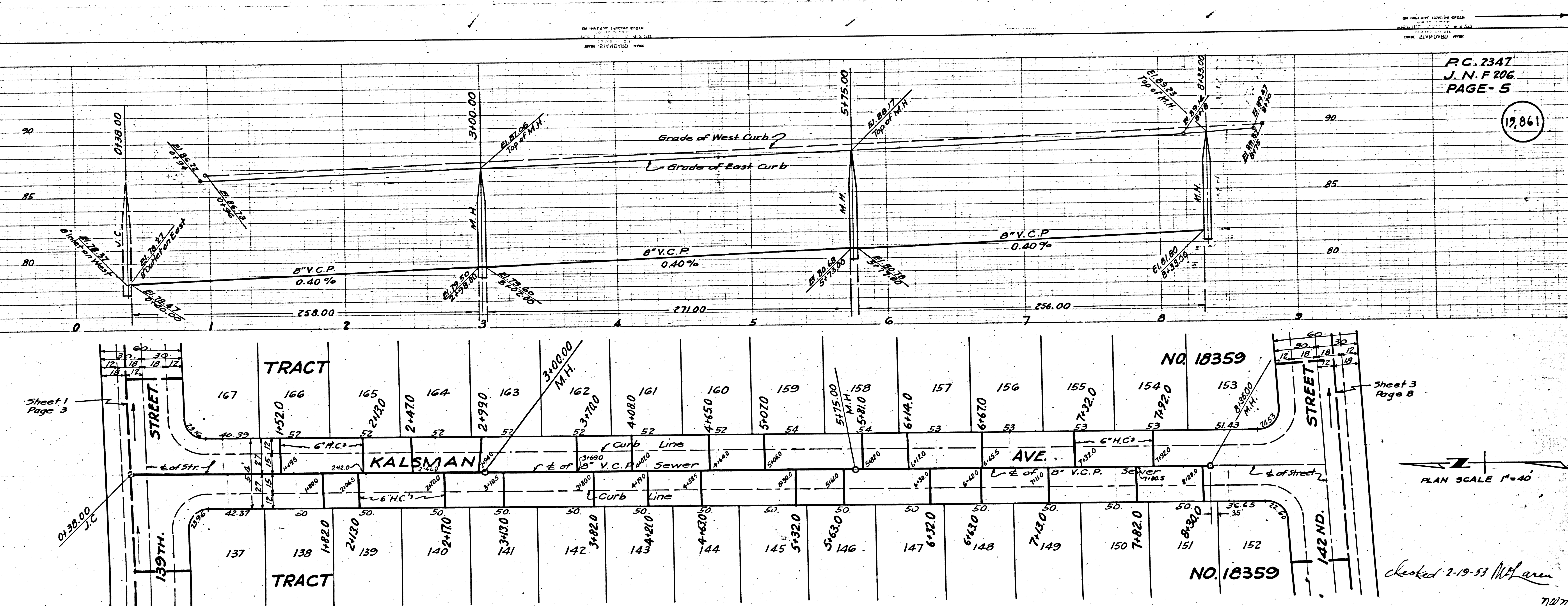
①

23442 U4VAT  
 T4372 H  
 214 AMAB P2A

①

23442 MAB

CO



R.C. 2347  
J. N. F. 206  
PAGE - 5

19861

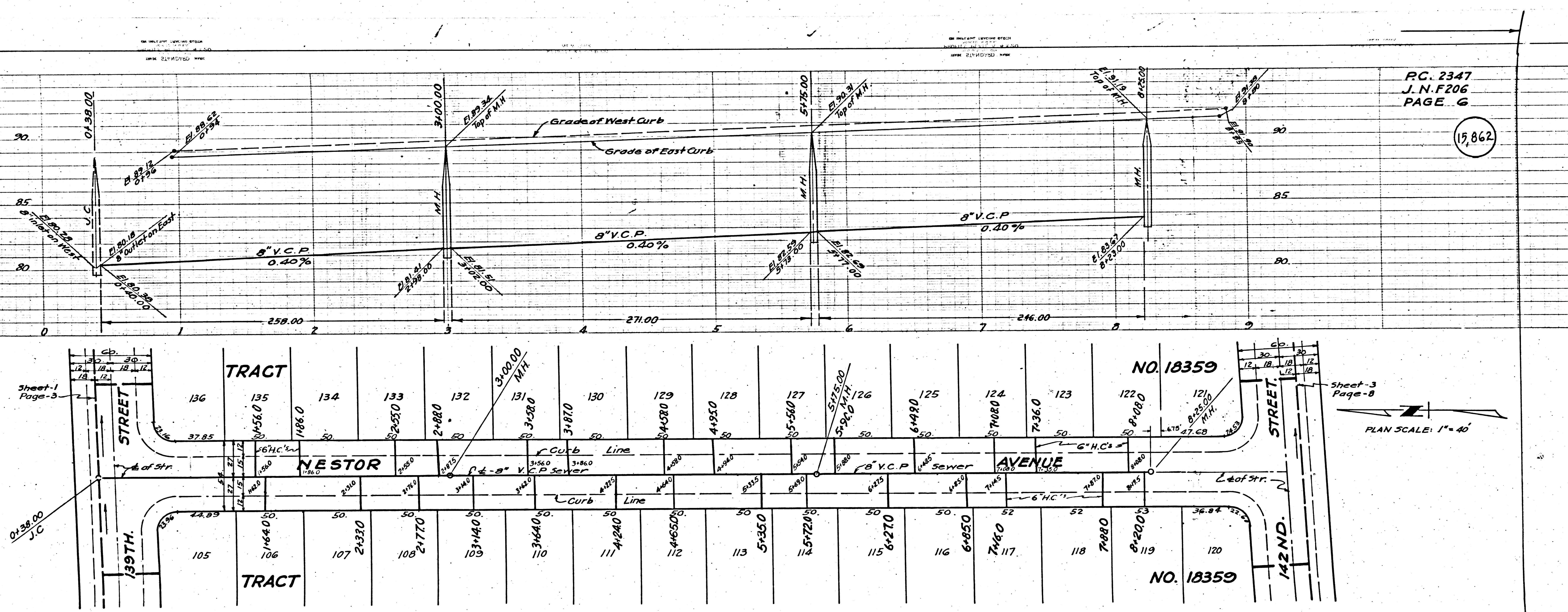
SHEET  
OF 3-SHEETS

24th - 26th STS  
WEST 13th AVE  
TRACT NO 18359

J. N. F. 206  
R.C. 2347  
TRACT NO 18359

Checked 2-19-53 M.L. Allen

13



PC. 2347  
J.N.F206  
PAGE G

15,862

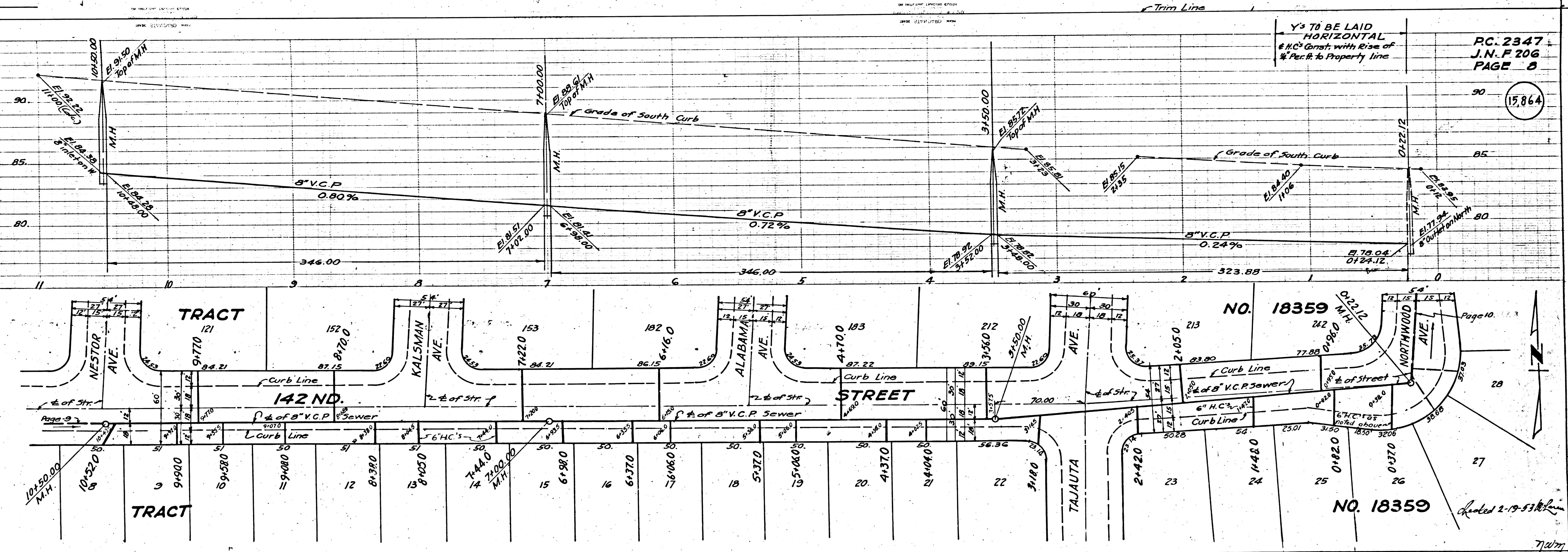
Sheet-1  
Page-3

Sheet-3  
Page-8

PLAN SCALE: 1"=40'







PC. 2347  
J.N.F 206  
PAGE 8

SHEET 3  
OF 3 SHEETS

15,864

3

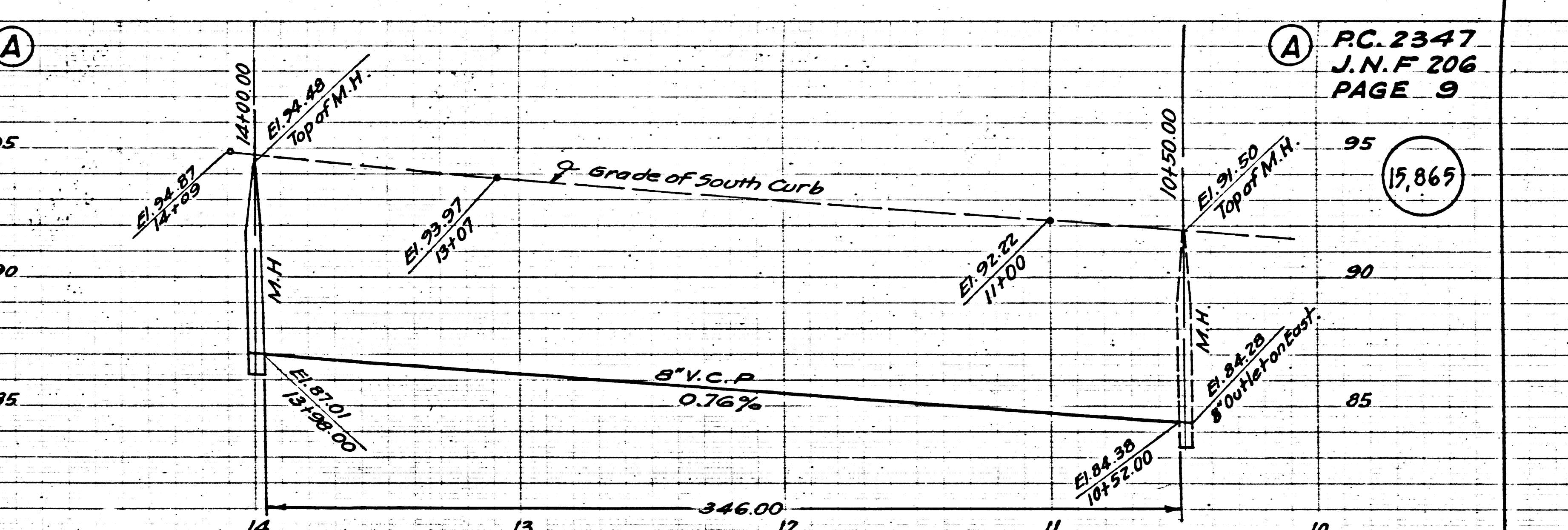
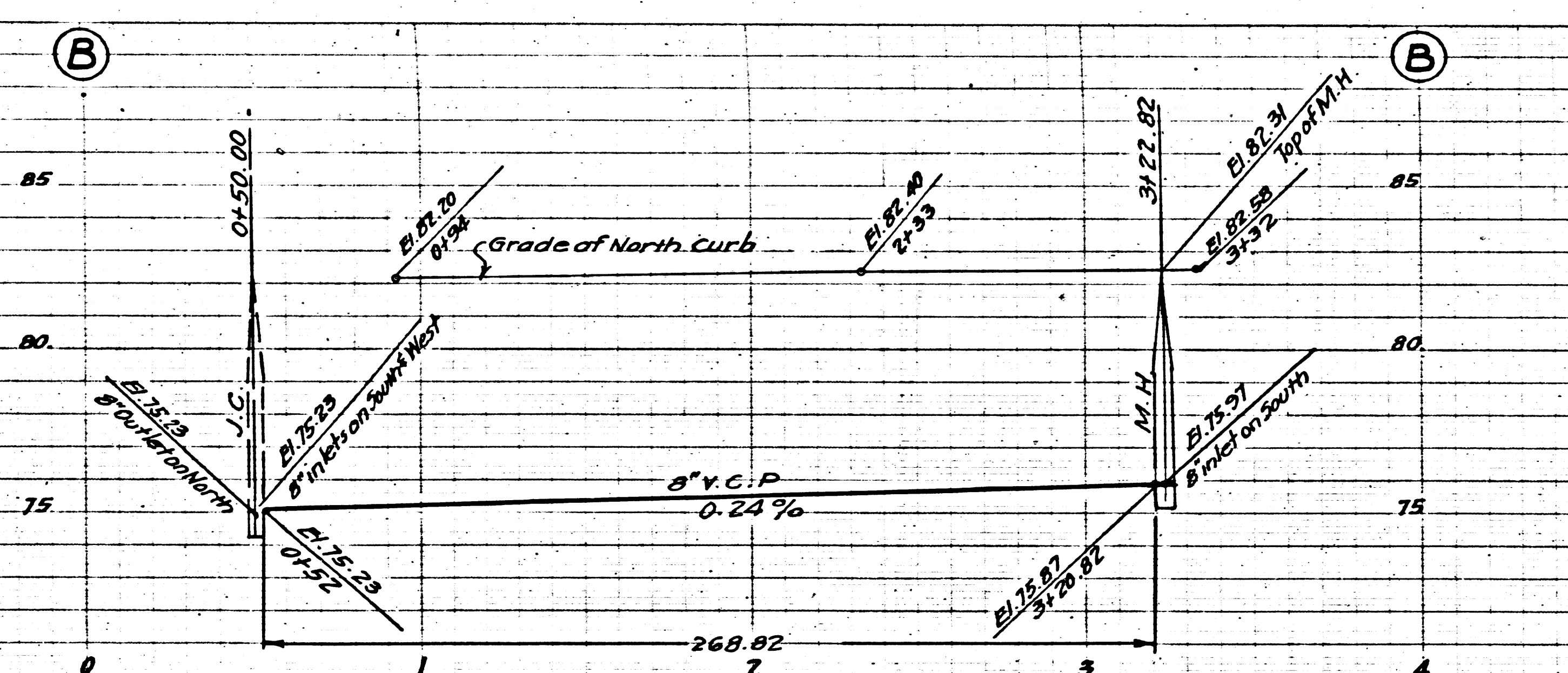
SAN SEWERS

NORTHWOOD AVE  
142ND STREET  
142ND STREET

TRACT 18359  
N.W.F. 506  
P.C. 1947

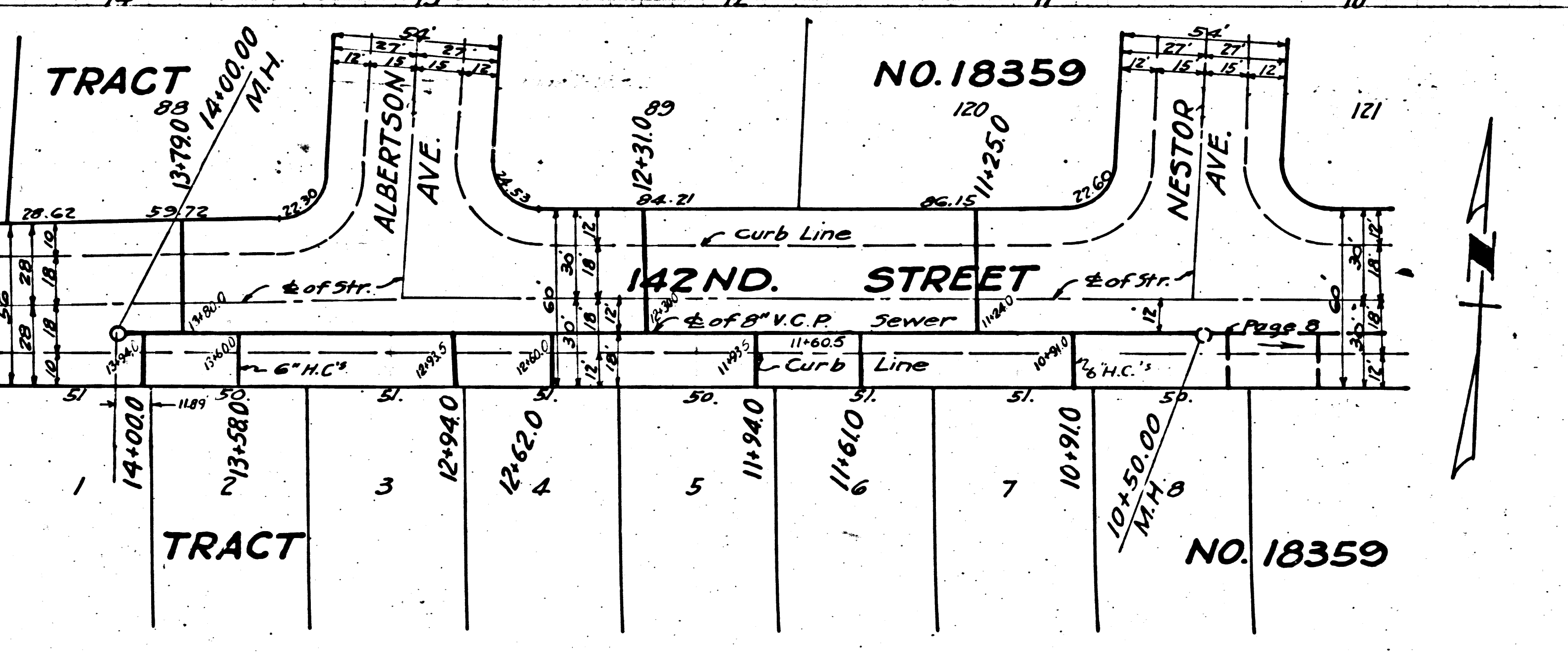
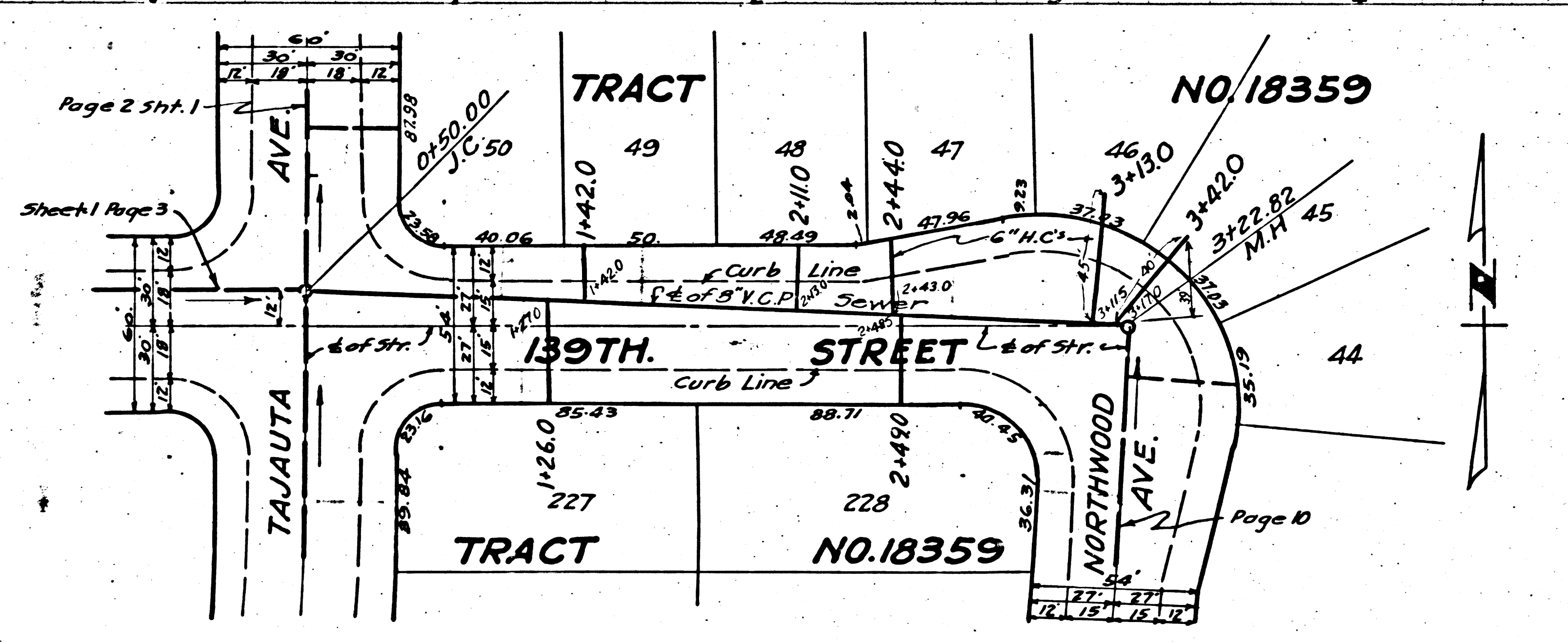
Checked 2-19-53

7/27/57



RC. 2347  
J.N.F 206  
PAGE 9

15,865



22

