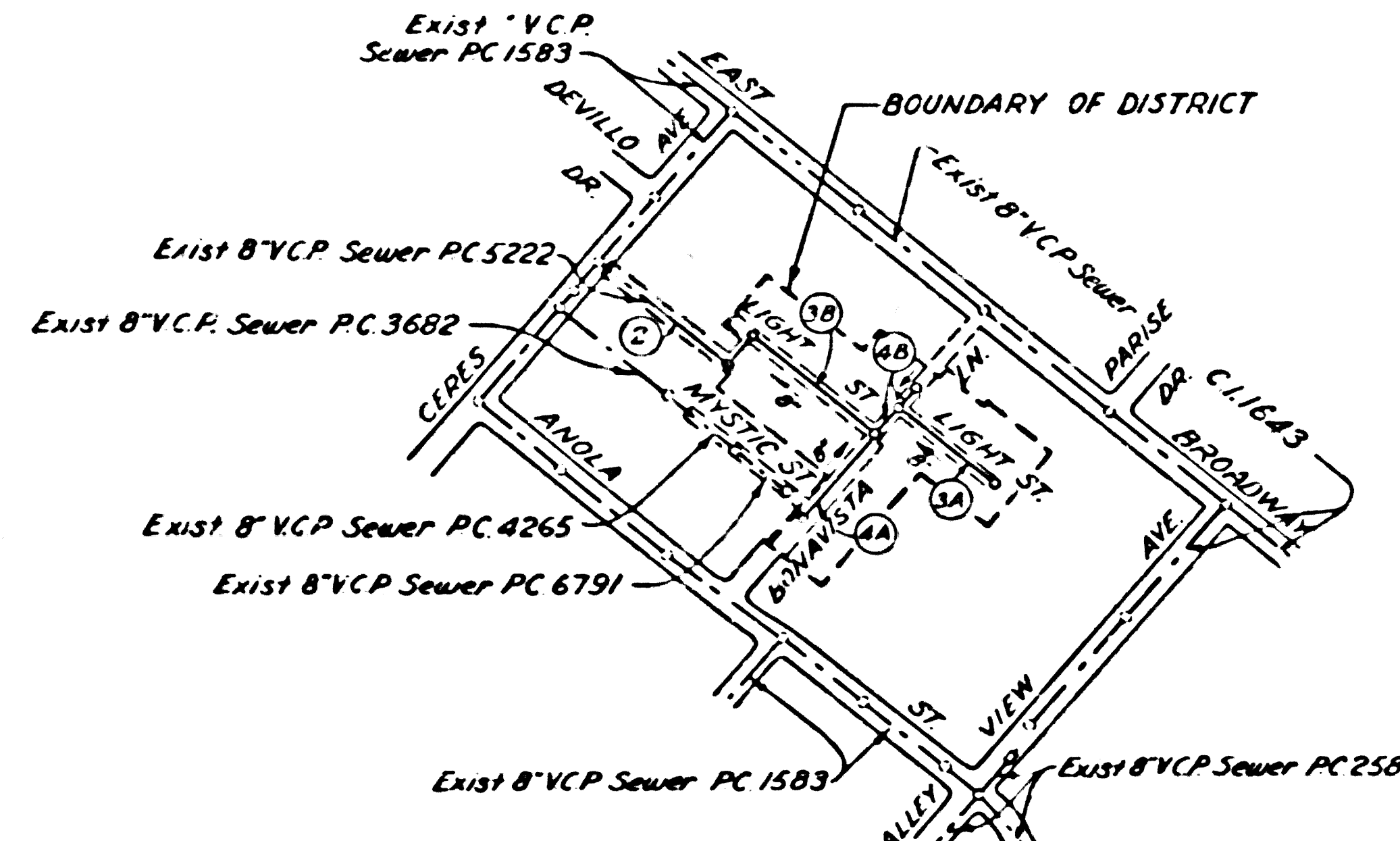


B.M. WZ-376 ELEV. 178.432

F.B. 1778-101 CERECITA DR & CERES AVE. S.E. CORNER BY SPK. 7'E. OF W END CONC. GUTTER 35' S & 15' E OF E INT.



INDEX MAP C.I. 2354 BONAVISTA LANE SCALE: 1"=400'

NOTICE TO CONTRACTOR The existence and location of any underground utility lines or structures shown on these plans are believed to be correct by the engineer...

NOTE: Figures in circles indicate page numbers

WHITTIER BUILDING DISTRICT No. 11

USE EXTRA STRENGTH PIPE. ALL 12" IS STANDARD WIDTH EXCEPT AS NOTED. THE MECHANICAL COMPRESSION JOINTS FOR ALL VITRIFIED CLAY PIPE SERVICES PER SPEC. SECT. 24, 46, & 47.

Table with columns: PAGE NO., STREET, STATION LIMITS (FROM, TO), TYPE OF RESURFACING. Includes entries for Paved R/W, Concrete Drive, and Base Material.

- STANDARD LEGEND: 1-1 STANDARD BRICK SEWER STRUCTURE, 1-2 STANDARD MANHOLE FRAME AND COVER, 1-3 STANDARD MANHOLE STEPS, 1-4 STANDARD STOPPER, 1-5 STANDARD WYE SUPPORT, 1-6 STANDARD SUPPORT AND PROTECTION OF SEWER PIPES, 1-7 STANDARD RECORD FOR SEWER PIPES, 1-8 MINIMUM EXCAVATION SAFETY REQUIREMENTS.

- THE UNDERGROUND UTILITY COMPANIES WITHIN THE LIMITS OF THIS PROJECT ARE AS FOLLOWS: 1. Southern Counties Gas Co, 2. Orchard Dale County Water Dist, 3., 4.

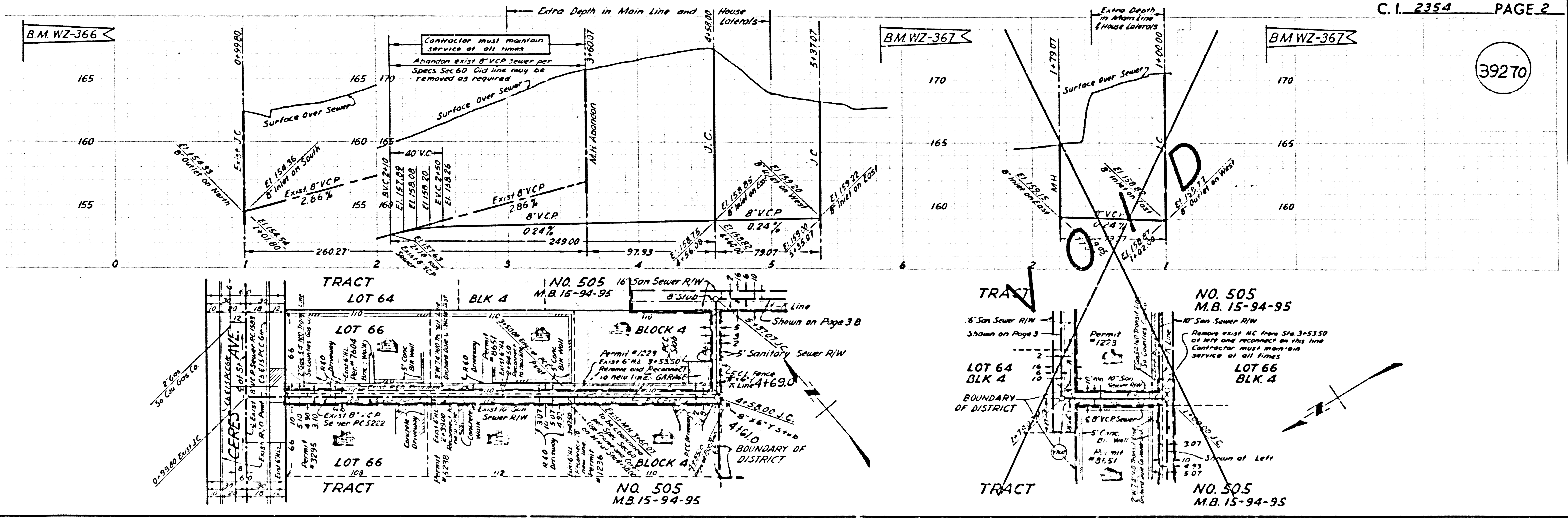
COUNTY IMPROVEMENT NO. 2354 PROFILE, ALIGNMENT AND GRADE OF SANITARY SEWERS TO BE CONSTRUCTED IN BONAVISTA LANE AND OTHER RIGHTS OF WAY

SCALE: 1"=4' HORIZ. 1"=40' VERT. December 1965 COUNTY OF LOS ANGELES, CALIFORNIA

JOHN A. LAMBIE COUNTY ENGINEER J. D. PARKHURST CHIEF ENGINEER OF COUNTY SANITATION DISTRICT NO. 10

APPROVED BY S. Teebom SAUNTIATION ENGINEER RECOMMENDED BY D. McCollom REGIONAL ENGINEER DESIGNED BY Charles E. McCallum INC. C.E. NO. 15431

Table with columns: LAYOUT, TRACED, CHECKED, F.B. NO., DATE, UNDERGROUND BENCH MARKS, INSPECTOR.



F.B. 2130 { E Topo: 160 & 167, 170; Topo: 17, 10175; X-Sec: 160 to 193

F.B. 2130 { E Topo: 167; Topo: 173; X-Sec: 206 & 207

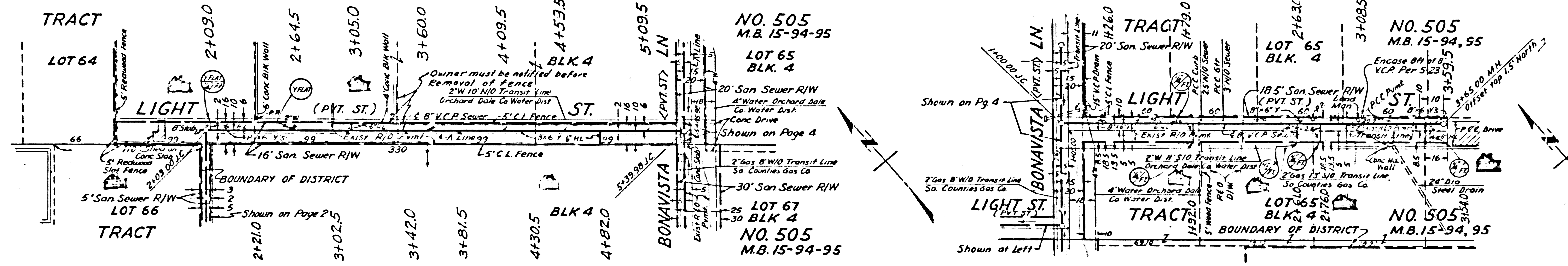
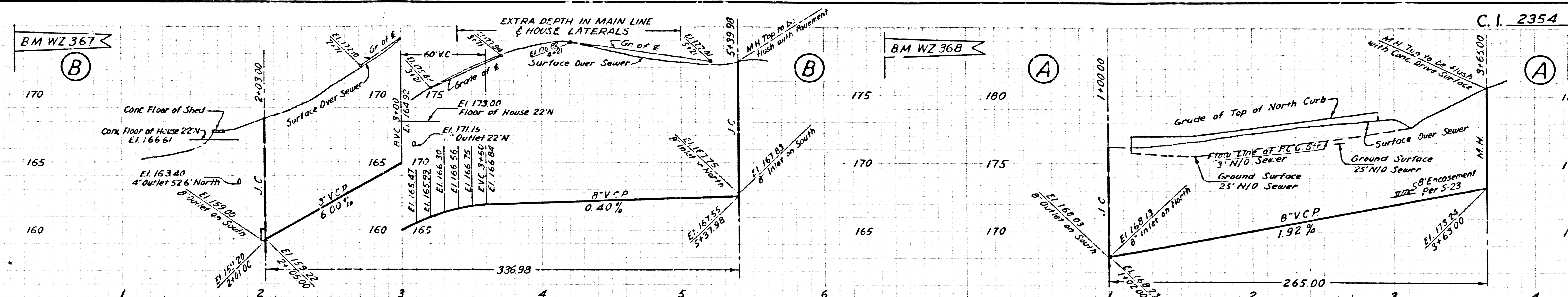
PAGE 2 185 OF 194 PAGES

Trim Line

BONAVISTA LANE

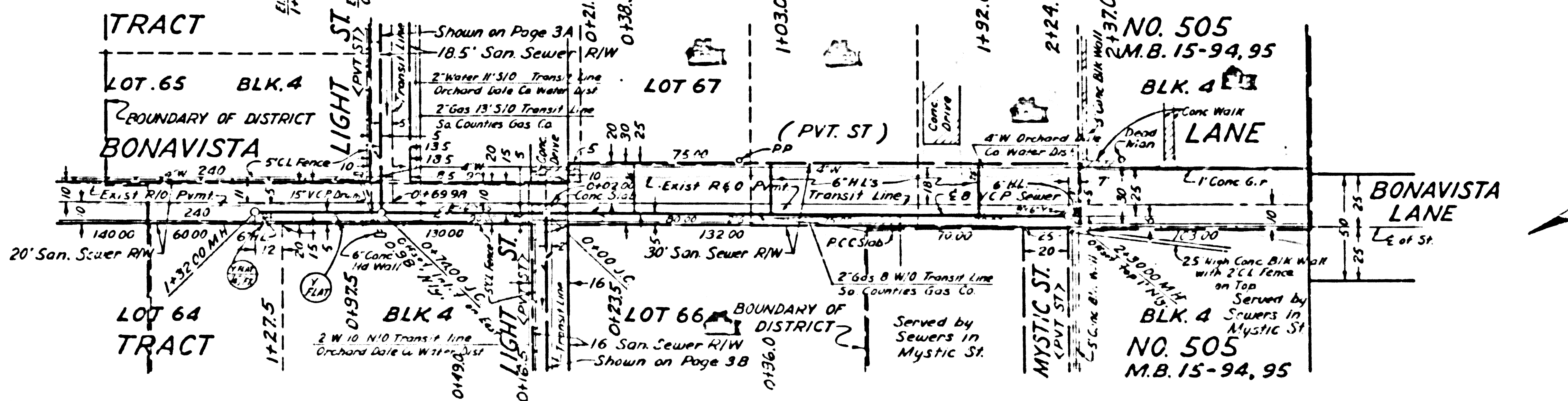
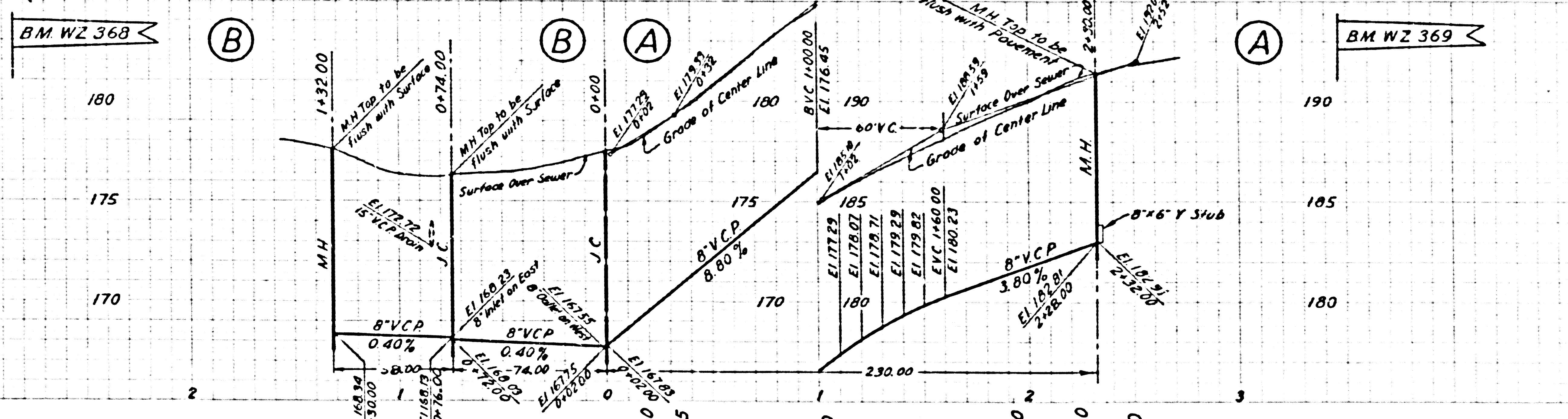
C.I. 2354

39271



Sta. 2130 to 5+29 - See M.L. for P.O. Request

39272



FB 2130 { E : 163, 164
 Topo : 170, 179, 181
 X-SEC: 202 to 205 P.O. Requested extra Y

2355 10

BONAVISTA TRACT

2355 10 to 13 to 2355A