

16,918

PALMDALE BLDG. DIST. 8-P

P.C. 2359 SHT 1 of 1 Pg. 1

U.S.G.S. K-426, 5th. Disc. on
rele Post. 0.40 Mile N^o. of
PALMDALE Sta. 84 E of E of
in TRACK EL: 2647.962

Grades to which this improvement is to be constructed are shown on plan profile. Grade points
to top of curb center line of street or center line of Alley are shown by circles on profiles.
(All all points between designated points the grade shall be established so as to conform to a
straight line drawn between said designated points.
Elevations are in feet above U.S.S. Datum or Mean Sea Level.

This drawing and the data hereon are hereby made a part of the Specifications.
Work shall be constructed according to specifications on file in the office of the County
Engineer and shall be prosecuted only in the presence of the County Engineer.

Before work can be started the contractor must obtain a permit to excavate in County
Streets from the L.A. County Road Dept 108 W. Second St., and make a deposit with the
County Engineer, B.S. L.A. County Engineering Bldg., sufficient to cover the cost of Con-
struction inspection and record plans.

Accuracy of this plan by the County of Los Angeles does not constitute a representation
as to the accuracy of the location of or the existence or non-existence of any under-
ground utility pipe or structure within the limits of this project.

No representative of the County Engineer will survey or lay out any portion of the work.
The owner or his authorized agent shall furnish the County Engineer with grade stakes
and locations of all house connections and manholes and shall provide stakes for them
at their stations with attaching plainly marked. Any change of location shall be requested
in writing by the owner or his representative.
No revision shall be made in these plans without the approval of the County Engineer.
Provide stakes on the property lines or property lines produced at right angles to the
sewer line at the center line of each manhole.

Stakes to be installed with cement compound by manufacturer of this plant Spec Sec 33-40
Concrete pavement to be 4" max. less than 2" in diam with concrete 3000 lbs. Spec. Sec. 98
Below the lines are connected to the outlet a house connection permit must be obtained
from L.A. County Sewer Permit Section 108 W. 2nd Street
Install wire, and tag at end of all connections Spec. Sec 4B.

PROFILE ALIGNMENT AND GRADE OF
SANITARY SEWERS

To BE CONSTRUCTED IN
9TH STREET EAST

Between a point 650.52 feet S. of

AVENUE Q and a point 1095.00

feet South of AVENUE Q

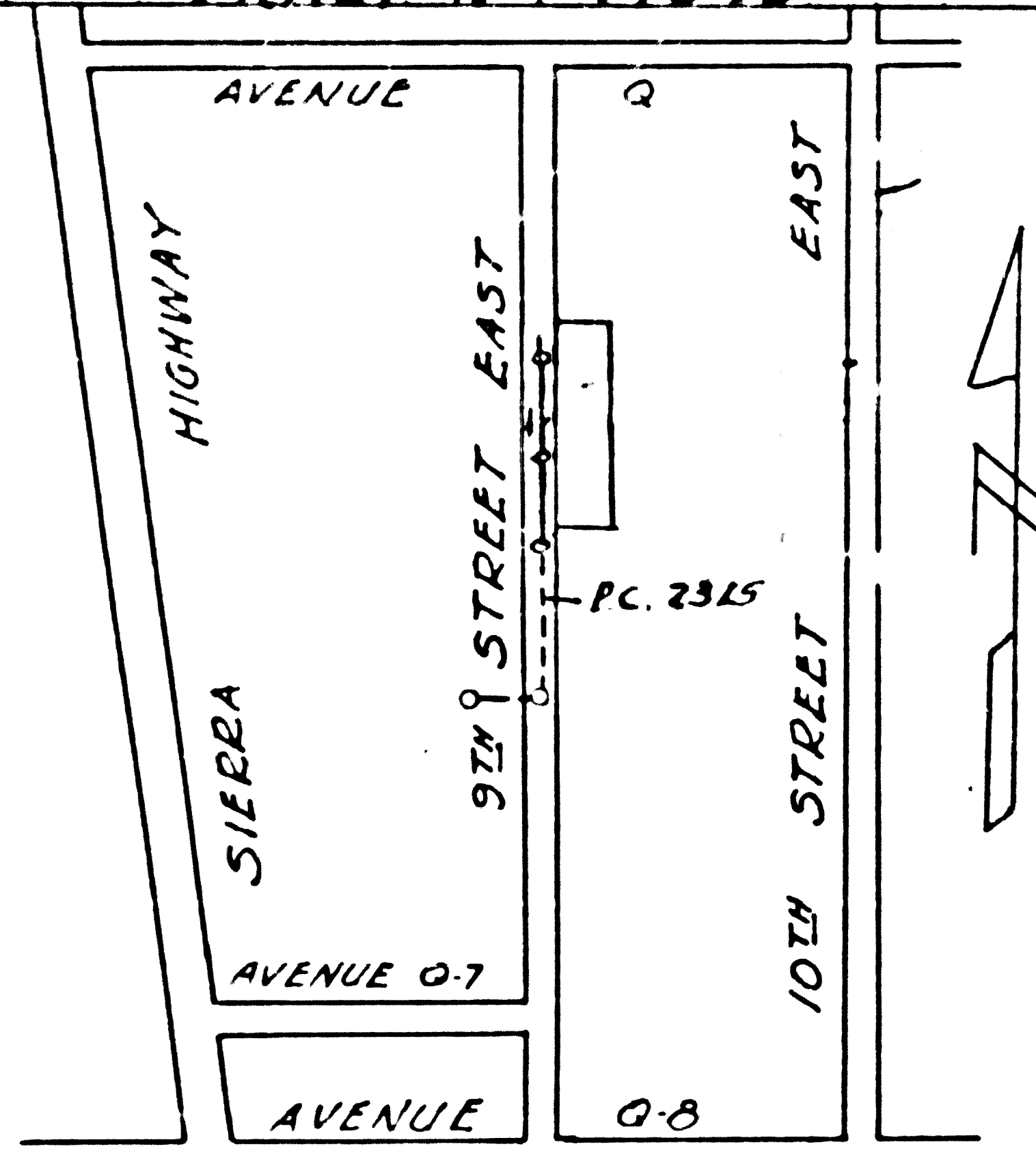
TRACT IN N^o 17543.

Scale Vert. 1"=4'
Horiz. 1"=40'

Aug 1952

INDEX MAP
SCALE 1:3600

TRACT N^o 17543



P.C. N^o 2359 J.N.F. 218

check 8-11-52 McGowan

- USE STANDARD MANHOLE FRAME & COVER S. & 117.
- USE STANDARD STRENGTH PIPE EXCEPT AS NOTED.
- USE CEMENT MORTAR FOR ALL VITRIFIED CLAY PIPE JOINTS.
- REPAVE ALL TRENCH WITHIN PAVED AREA TO MEET L.A. COUNTY ROAD DEPARTMENT REQUIREMENTS IN ACCORDANCE WITH THE PERMIT.
- ALL STRUCTURES SHALL BE BRICK SEWER STRUCTURES S. & 104.
- ENCASE 4' OF SEWER AT POINTS OF INTERFERENCE WITH POLES AS PER S. & 119.
- CONSTRUCT HOUSE CONNECTIONS WITH INVERT AT PROPERTY LINE 5 FEET BELOW CURB GRADE

BALL ALL JOINTS WITH CEMENT MORTAR.

Before breaking into any existing structure
and before final acceptance of this work,
County Sanitation District should be notified
in order that required inspection may be made.

APPROVED WILLIAM J. FOX, COUNTY ENGINEER
BY W. J. Gregory
CHIEF DEPUTY

APPROVED A.M. RAWN CHIEF ENGINEER
COUNTY SANITATION DIST. N^o 20
BY T. B. Boyd
OFFICE ENGR.

CHECKED BY Richard E. Kuhn DATE 2-1-52
OFFICE OF THE COUNTY ENGINEER
R.E. 7860

Tram line

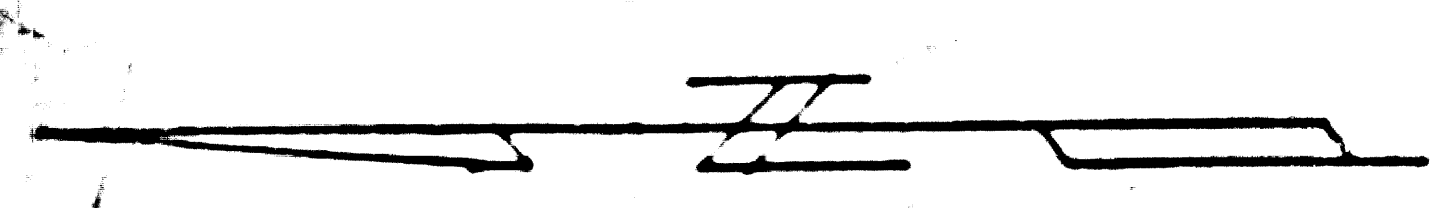
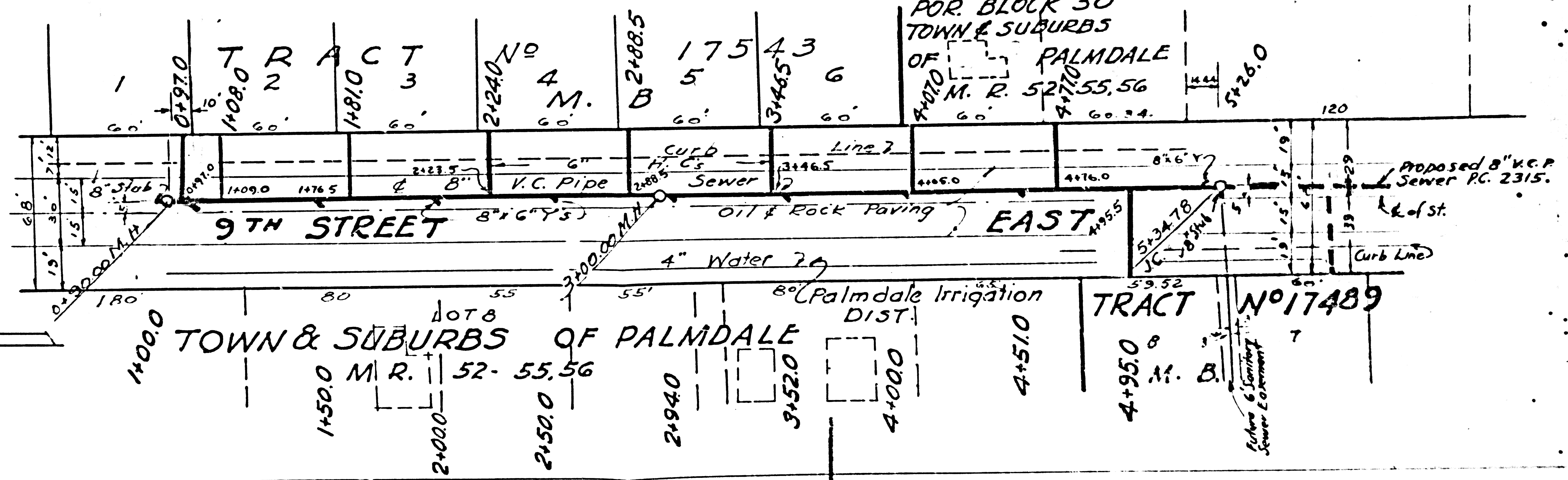
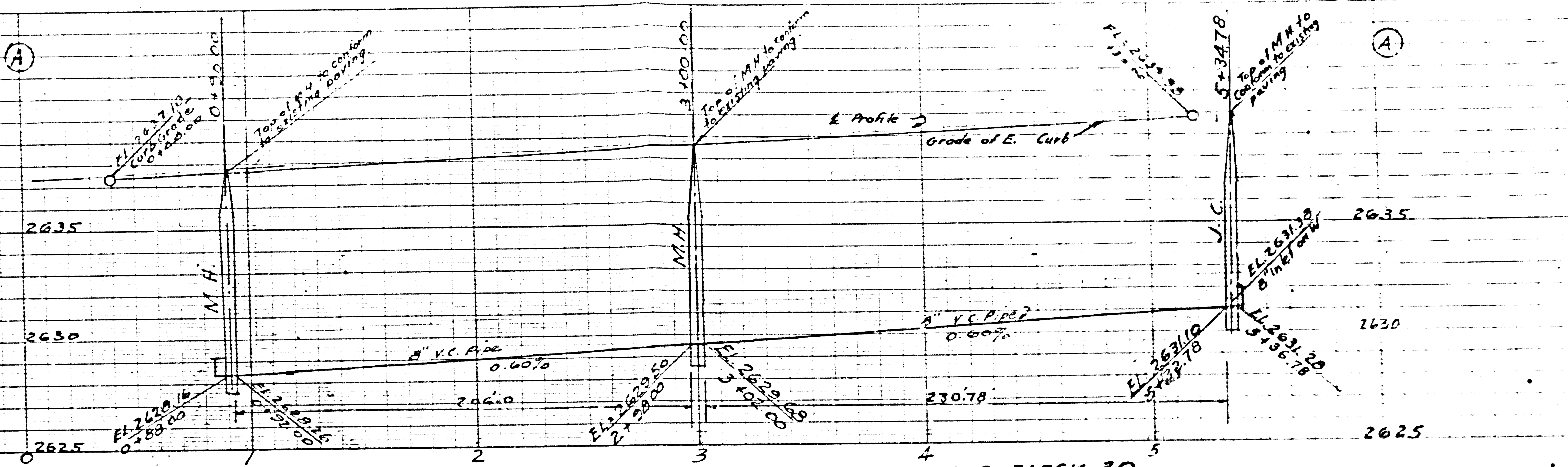
10.2359 - SH1 of 1 Pg. 2

16,918

B.M. U.S.G.S. K426 5th. Disc.
Concrete Post 0.40 Mile N.P. of
S.P. PALMDALE Sta. 84 E. of E
Main Track. EL: 2647.362

Trim Line

Trim Line



P