

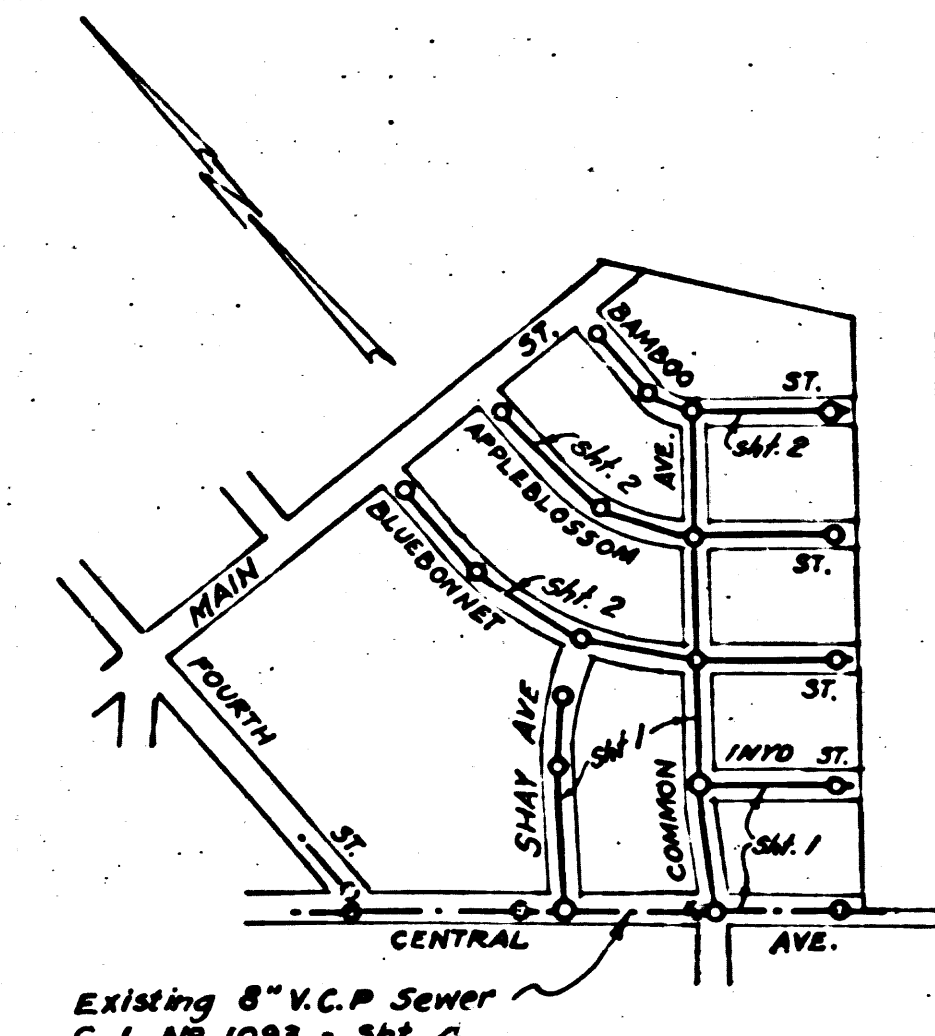
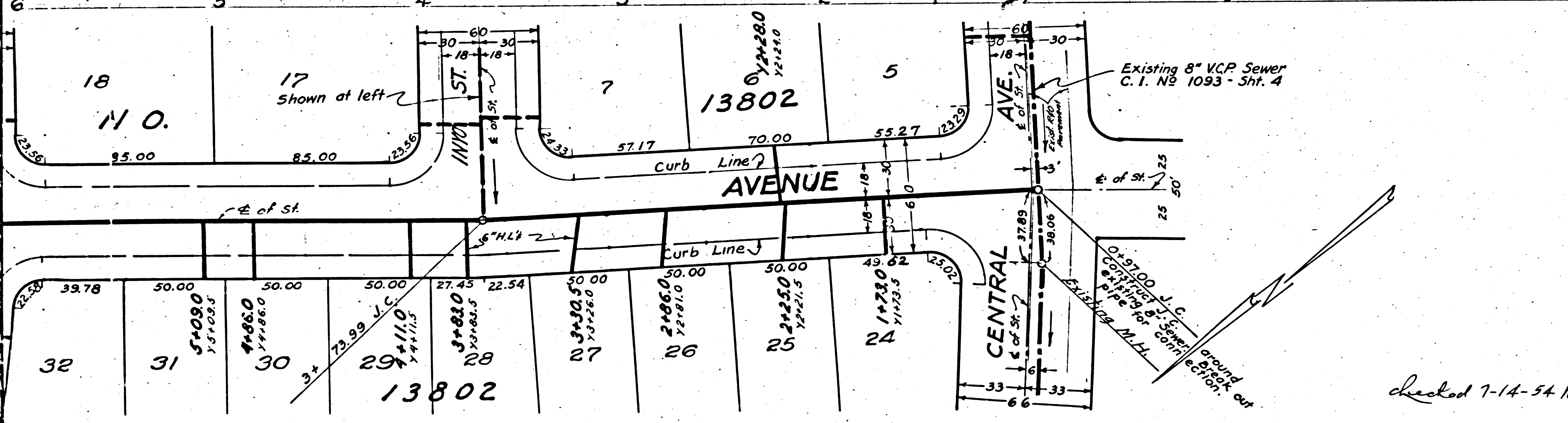
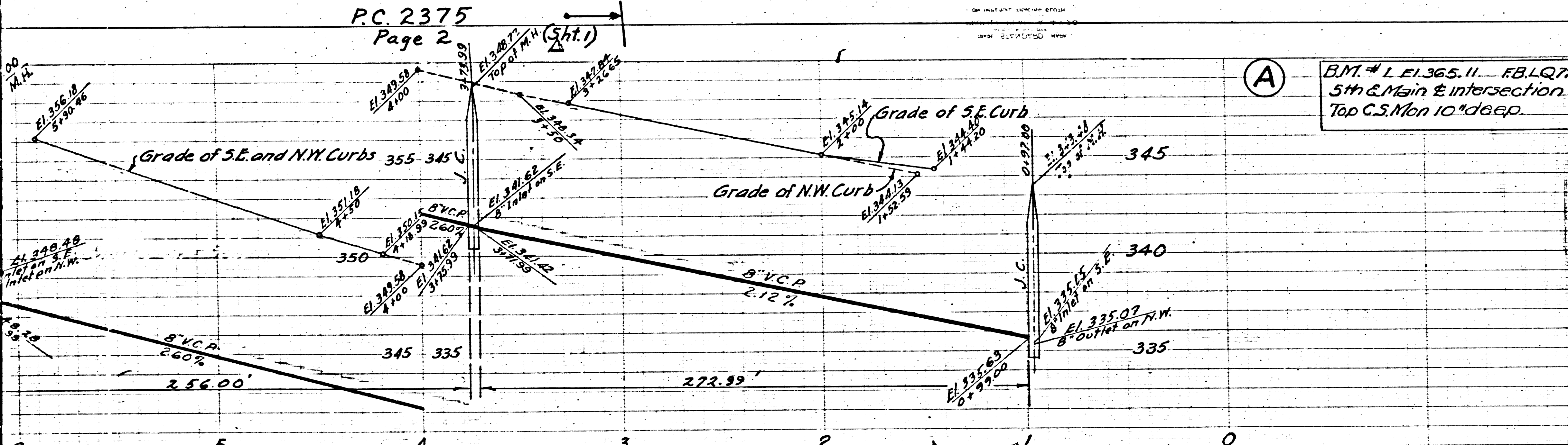
PC 2375
Page 2

(J.N.F.239) P.C. 2375
(J.N.0931.42) Page 1

PUEENTE - Bldg. Dist. 2. (18,486)

PROFILE, ALIGNMENT AND GRADE OF
SANITARY SEWERS
TO BE CONSTRUCTED IN
TRACT NO. 13802
COMMON AVENUE
BETWEEN CENTRAL AVE. & BAMBOO ST.
CENTRAL AVENUE
BETWEEN COMMON AVE. & S.E. LY LINE TRACT NO. 13802
FIFTH STREET
BETWEEN COMMON AVE. & S.E. LY LINE TRACT NO. 13802
SHAY AVENUE
BETWEEN CENTRAL AVE. & BLUEBONNET ST.
PRIVATE CONTRACT NO. 2375
SHEET 1 OF 2 SHEETS
W.S. 38 SEPTEMBER, 1952

1. INSTALL WIRE AND TAGS. SPECS. SECTION 48.
 2. USE STANDARD MANHOLE FRAME AND COVER, 5-a-117.
 3. USE STANDARD STRENGTH PIPE, EXCEPT AS NOTED.
 4. USE CEMENT MORTAR FOR ALL VITRIFIED CLAY PIPE JOINTS.
 5. CONSTRUCT HOUSE CONNECTIONS WITH INVERT AT PROPERTY LINE 5 FEET BELOW CURB GRADE (EXCEPT AS NOTED).
 6. ENCASE FOUR FEET OF SEWER AT POINTS OF INTERFERENCE WITH POLES AS PER 5-a-119.
 7. RESURFACE ALL TRENCH WITHIN PAVED AREA TO MEET LOS ANGELES COUNTY ROAD DEPT. REQUIREMENTS.
 8. ALL STRUCTURES SHALL BE BRICK SEWER STRUCTURES 5-a-104.
 9. STOPPERS TO BE INSTALLED WITH JOINT COMPOUND BY MANUFACTURER AT HIS PLANT, SPEC'S SEC. 33.42.
- NOTE: NO REPRESENTATIVE OF THE COUNTY ENGINEER WILL SURVEY OR LAY OUT ANY PORTION OF THE WORK. THE OWNER OR HIS AUTHORIZED REPRESENTATIVE SHALL FURNISH THE COUNTY ENGINEER WITH GRADE SHEETS AND STATIONS OF ALL HOUSE CONNECTIONS AND Y BRANCHES AND SHALL PROVIDE STAKES FOR THEM AT THEIR PROPER LOCATIONS WITH STATIONING PLAINLY MARKED. ANY CHANGE OF LOCATION SHALL BE REQUESTED IN WRITING BY THE OWNER OR HIS REPRESENTATIVE. NO REVISIONS SHALL BE MADE IN THESE PLANS WITHOUT APPROVAL OF THE COUNTY ENGINEER. PROVIDE STAKES ON THE PROPERTY LINES OR PROPERTY LINES PRODUCED, AT RIGHT ANGLES TO THE SEWER LINE AT THE CENTER LINE OF EACH MANHOLE.



No Charge For
CONNECTIONS
N.L.S. 1/14/53

SCALE: VERT. 1"=4'
HORIZ. 1"=40'

PREPARED IN THE OFFICE OF
KARL F. TUTTLE ENGINEERING CO.

BY: *Harold Johnson* 925.32
Reg. C.E. #7640

FOR LEGEND
SEE PLAN NO. 5-a-64

NOTE: GRADES TO WHICH THIS IMPROVEMENT IS TO BE CONSTRUCTED ARE SHOWN ON PLANS AND PROFILE. GRADE POINTS FOR TOP OF CURB, CENTER LINE OF STREET OR CENTER LINE OF ALLEY ARE SHOWN BY CIRCLES ON PROFILES. AT ALL POINTS BETWEEN DESIGNATED POINTS THE GRADE SHALL BE ESTABLISHED SO AS TO CONFORM TO A STRAIGHT LINE DRAWN BETWEEN SAID DESIGNATED POINTS. ELEVATIONS ARE IN FEET ABOVE U.S.C. & G.S. DATUM OR MEAN SEA LEVEL. THIS DRAWING AND THE DATA HEREON ARE HEREBY MADE A PART OF THE SPECIFICATIONS. THE WORK SHALL BE CONSTRUCTED ACCORDING TO SPECIFICATIONS ON FILE IN THE OFFICE OF THE COUNTY ENGINEER AND SHALL BE PROSECUTED ONLY IN THE PRESENCE OF THE COUNTY ENGINEER. BEFORE WORK CAN BE STARTED, THE CONTRACTOR MUST OBTAIN A PERMIT TO EXCAVATE IN COUNTY STREETS FROM THE L.A. COUNTY ROAD DEPT., 102 W. 5th STREET, AND MAKE A DEPOSIT WITH THE COUNTY ENGINEER, 733 L.A. COUNTY ENGINEERING BLDG., SUFFICIENT TO COVER THE COST OF CONSTRUCTION INSPECTION AND RECORD PLANS. APPROVAL OF THIS PLAN BY THE COUNTY OF LOS ANGELES DOES NOT CONSTITUTE A REPRESENTATION AS TO THE ACCURACY OF THE LOCATION OF THE EXISTENCE OR NON-EXISTENCE OF ANY UNDERGROUND UTILITY, PIPE OR STRUCTURE WITHIN THE LIMITS OF THIS PROJECT.

COUNTY OF LOS ANGELES, CALIFORNIA.
APPROVED, **WILLIAM J. FOX** COUNTY ENGINEER
APPROVED, **A.M. RAWN** CHIEF ENGINEER
BY: *W. Gregory* CHIEF DEPUTY

CHECKED BY: *Robert E. Rubin* 12-9-1952
OFFICE OF COUNTY ENGINEER, REG. C.E. NO. 7860

RECEIVED
JUL 8 1952
L.A. COUNTY ENGINEER
SANITARY DIST. 2

TRACT NO. 13802

18,486

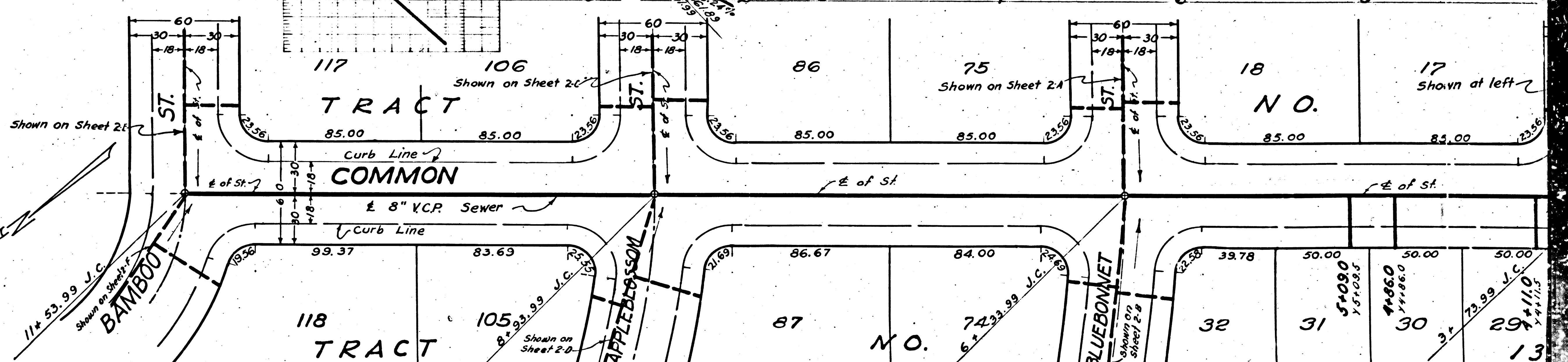
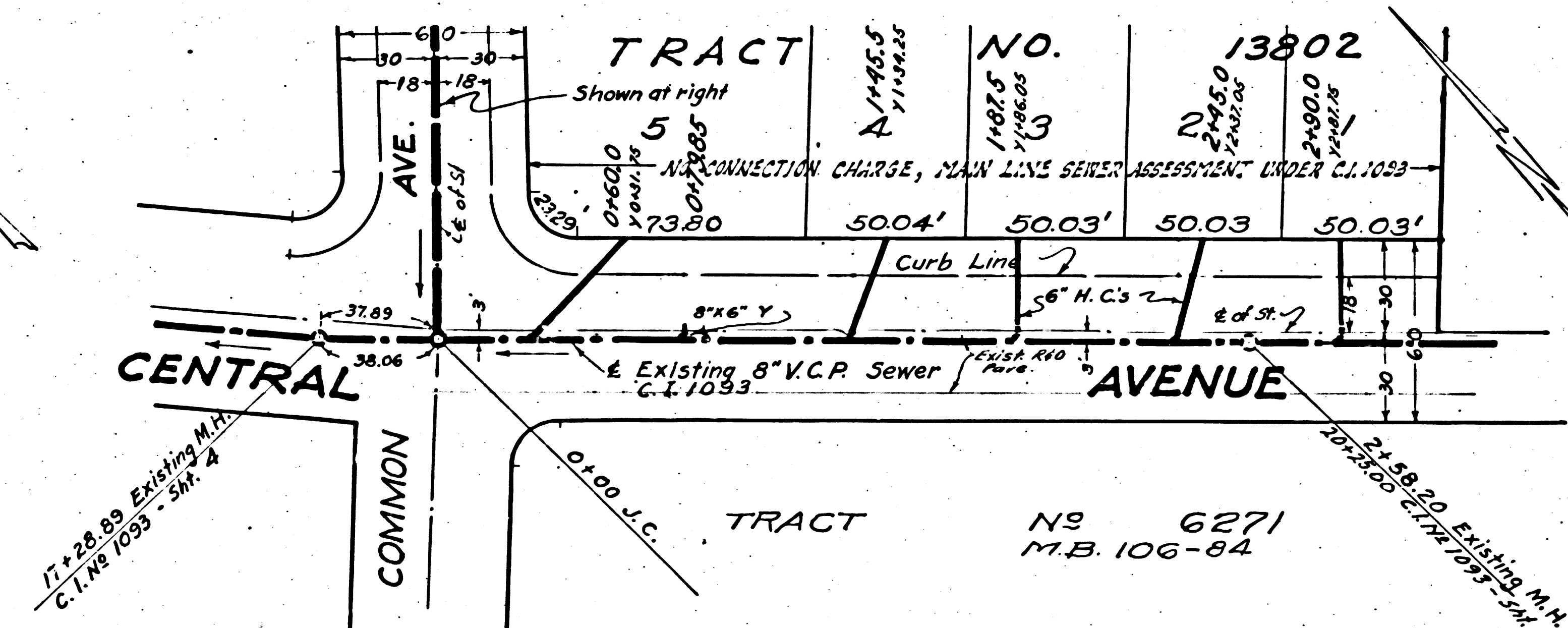
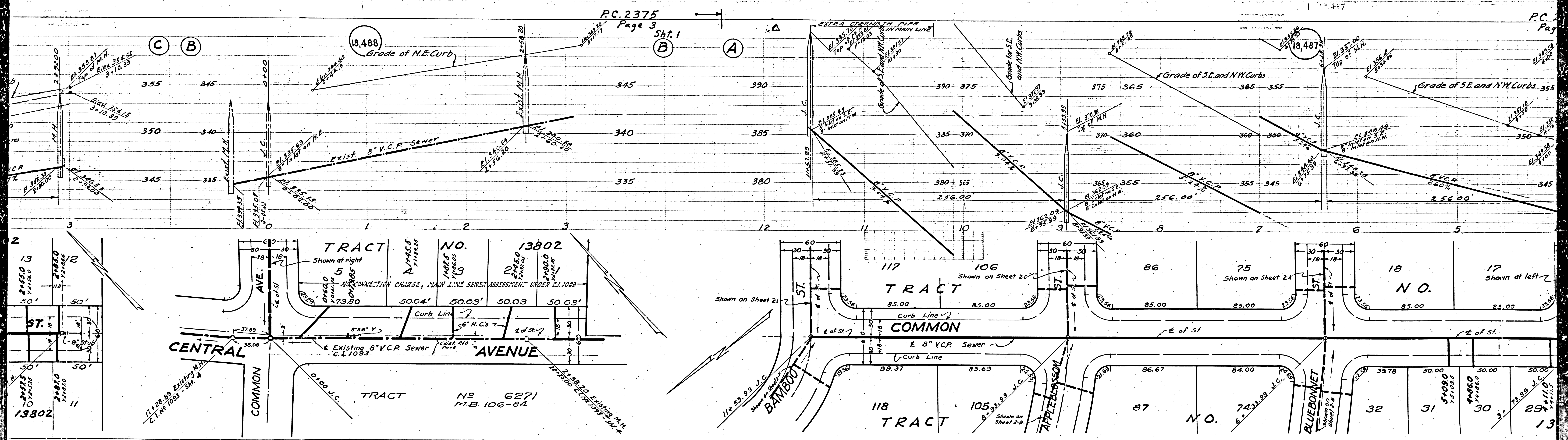
(A) B.M. # 1 E. 1365.11 - FB. 10771-1
5th & Main & intersection.
Top C.S. Mon 10' deep.

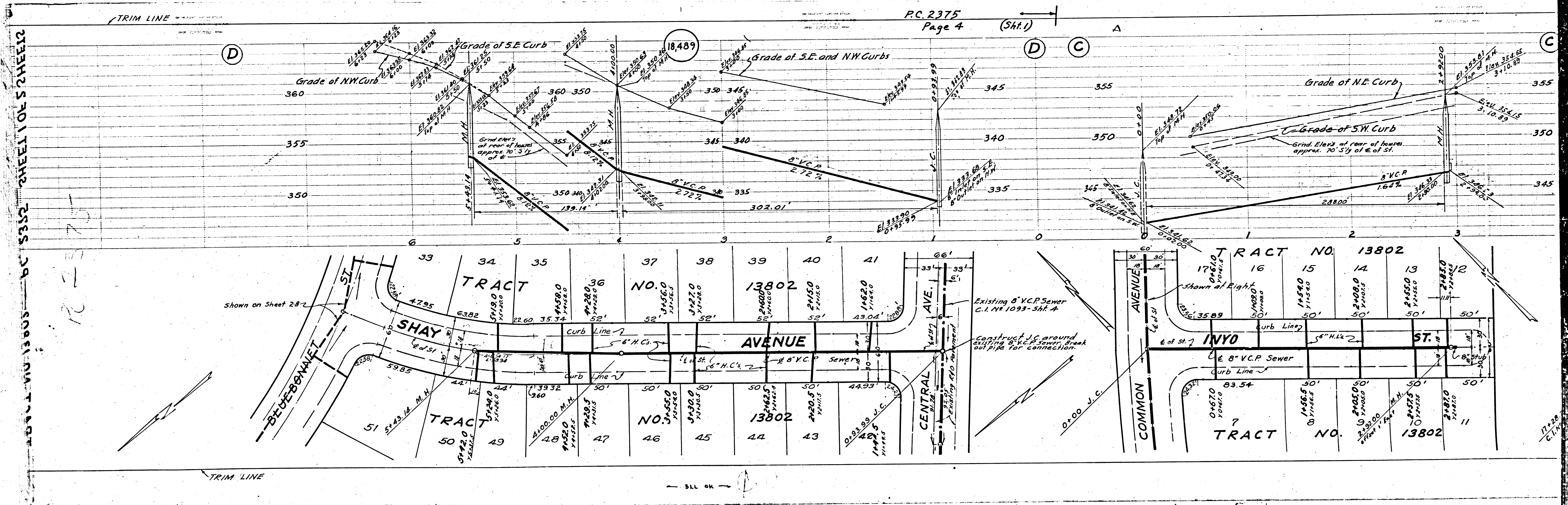
checked 7-14-54 W. J. Fox

TRIM LINE

PC. 2375
Page 3
Sht. 1

PC. 2375
Page 3
Sht. 1





P.C. 2375
Page 4 (Sht. 1)

SHEET 1 OF 2 SHEET

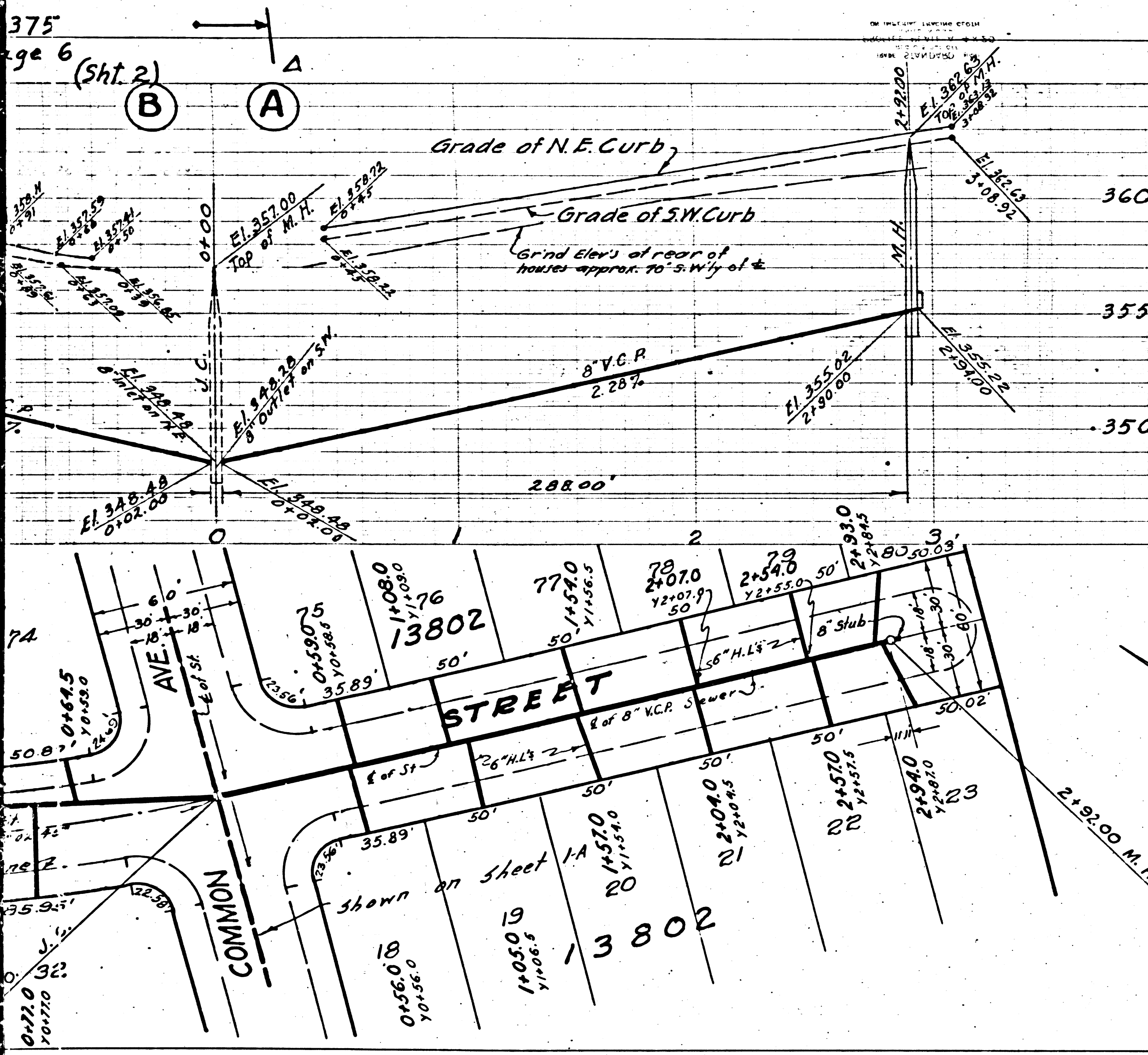
R-2375

TRIM LINE

TRIM LINE

ALL OK

11.22
C.L.



PC. 2375
Page 5 (Sht. 2)

**PROFILE, ALIGNMENT AND GRADE OF
SANITARY SEWERS
TO BE CONSTRUCTED IN
TRACT NO. 13802**

**BLUEBONNET STREET
BETWEEN MAIN ST. & S.E.'LY LINE TRACT NO. 13802**

**APPLE BLOSSOM STREET
BETWEEN MAIN ST. & S.E.'LY LINE TRACT NO. 13802**

**BAMBOO STREET
BETWEEN MAIN ST. & S.E.'LY LINE TRACT NO. 13802**

**PRIVATE CONTRACT NO. 2375
SHEET 2 OF 2 SHEETS**

SCALE: VERT. 1"=4'
HORIZ. 1"=40'

W.S. 38 SEPTEMBER, 1952.

PREPARED IN THE OFFICE OF
KARL F. TUTTLE ENG. CO. INC.

BY: *Harold D. Johnson* P.E. No. 7640

FOR LEGEND
SEE PLAN NO. 5-a-64

FOR CONSTRUCTION NOTES SEE SHEET 1

**No Charge For
CONNECTION
NLS 1-14-52**

RECEIVED
JUL 6 1952
L. A. COUNTY ENGINEER
SANITATION DIVISION

COUNTY OF LOS ANGELES, CALIFORNIA
APPROVED, WILLIAM J. FOX, COUNTY ENGINEER

BY: *A. H. Gregory*
CHIEF DEPUTY

APPROVED, A. M. RAWN
CHIEF ENGR. CO. SAN. DIST. NO. 15

BY: *J. A. [Signature]*
OFFICE ENGINEER

CHECKED BY: *Richard E. Rubin* 12-9-1952
OFFICE OF COUNTY ENGINEER, REG. C.E. NO. 7866

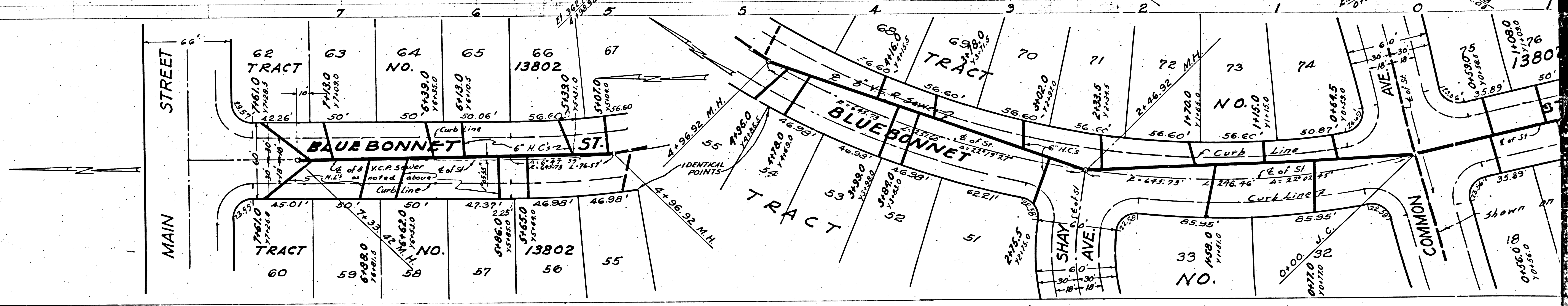
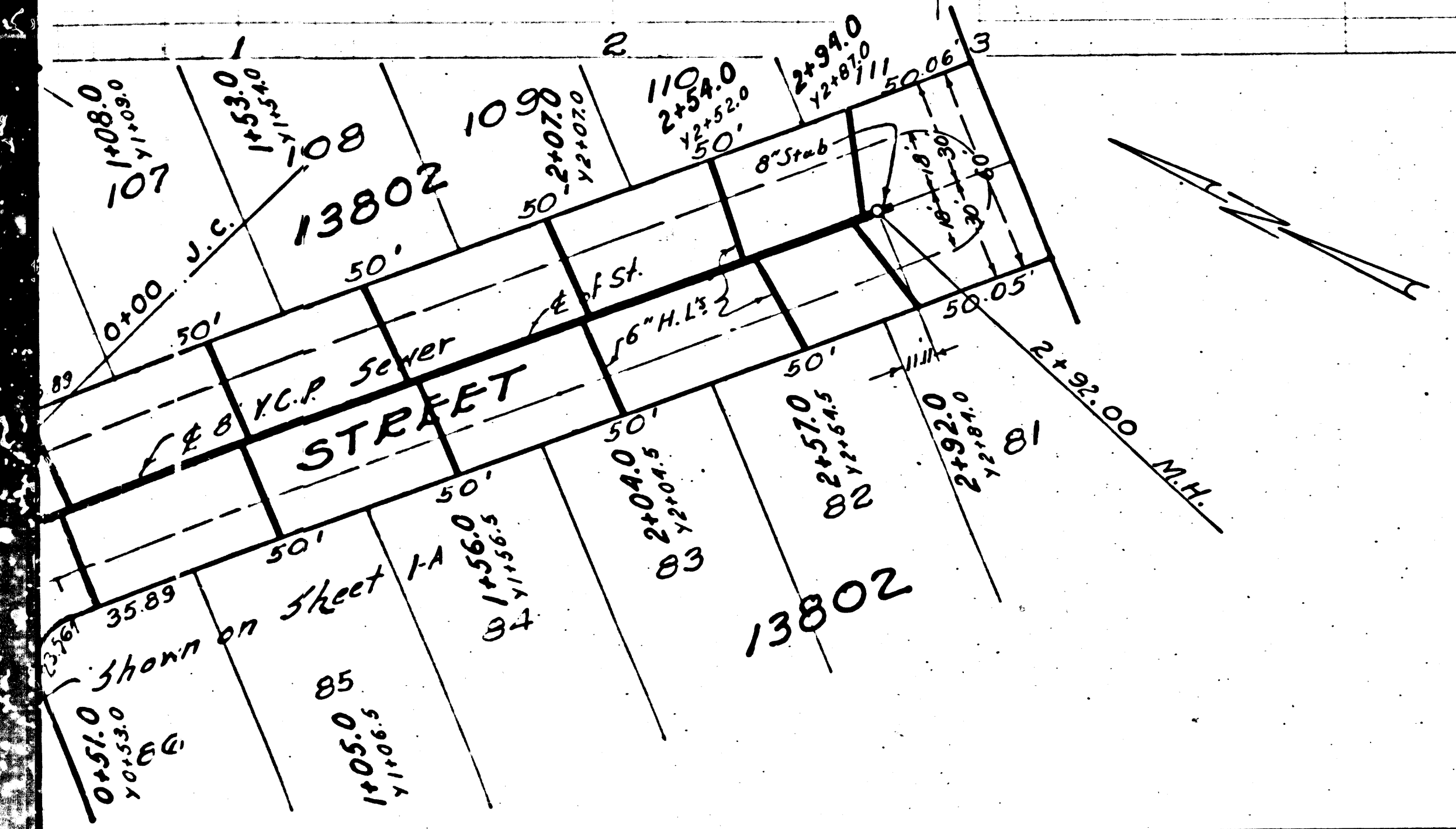
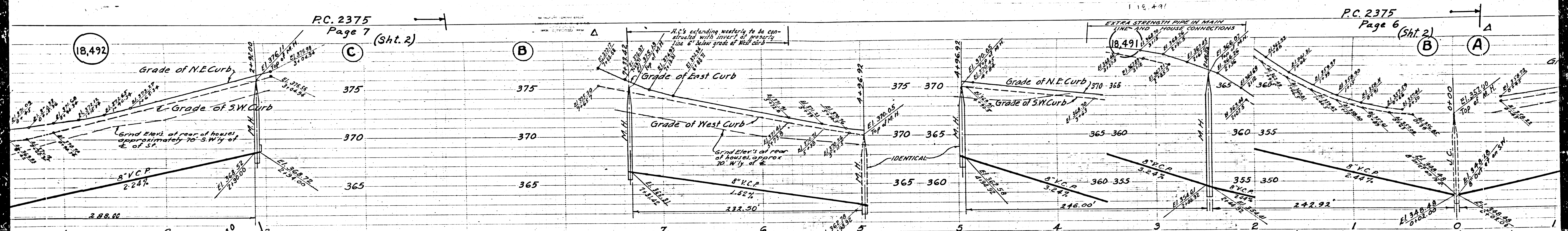
checked 7-14-54 *McLaren*

TRACT NO. 13802
BLUEBONNET ST. & S.E.'LY LINE TRACT NO. 13802
N.W. E 538

18,492

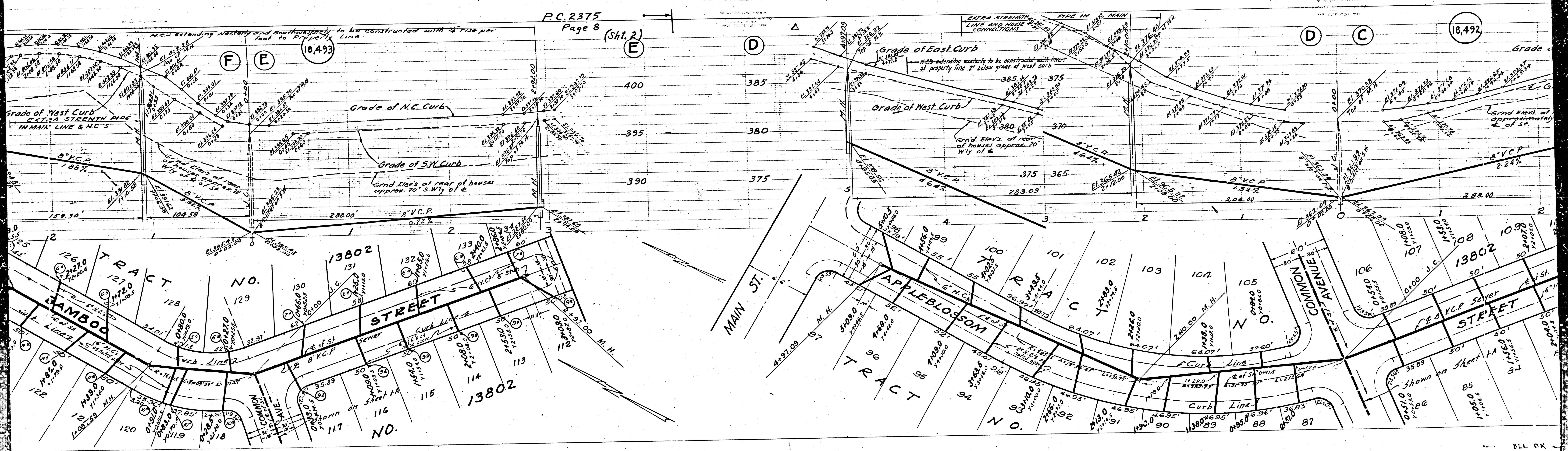
P.C. 2375
Page 7 (Sht. 2)

P.C. 2375
Page 6 (Sht. 2)



BLL OK

BLL OK



TRACT NO. 13805
SHEET NO. 5312
TRACT NO. 13805
SHEET NO. 5312

